

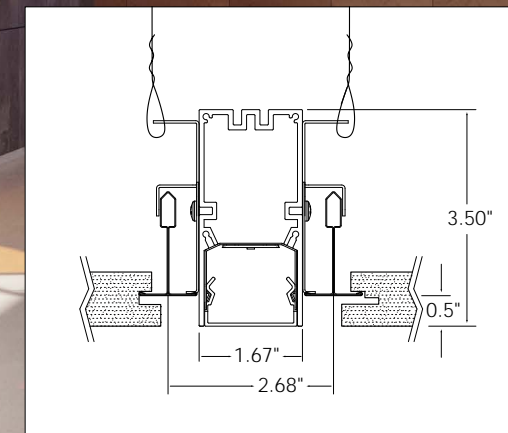
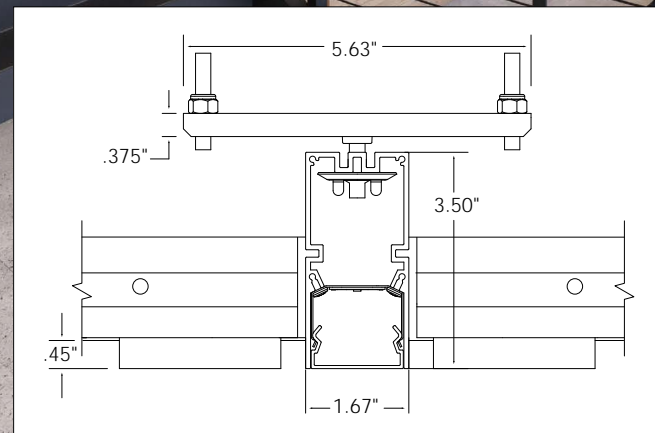
Many ceiling types, 2 simple mounting solutions

Two simple mounting options, offered for the entire Seem family of linear luminaires, mean that you can easily integrate high-quality, ambient lighting into a variety of specialty ceilings. Wood slats, metal grilles, ceiling panels or tiles – no matter the system, there's a Seem family luminaire that will provide optimal lighting for the space while letting the ceiling shine.

With the many lensing options offered for Seem 1, Seem 2, Seem 4, and Seem 6, you can pick the aperture, light distribution, and visual appearance that will enhance the ceiling and interior architecture. Specify the standard mounting option – NF or T4V – that will ensure easy installation for the specific ceiling type, directly from the cut sheet. Standard mounting option also means standard pricing and lead times, making the process easy from specification to installation.

Advantages of the NF and T4V mounting options

- Standard options specifiable from the cut sheet and available within standard lead times
- Pre-engineered to provide easy integration into various specialty ceiling system
- Code compliance when cable suspension is not allowed
- Mechanically sound options that ensure straightness and centering of the luminaires within the ceiling system
- Luminaires secured into the ceiling deck
- Up and down adjustability ensures that the bottom lens is flush with the ceiling plane
- Luminaire installation can follow ceiling installation, simplifying trade interaction at the job site



Luminaire options

NF and T4V mounting options are available for the following Seem family luminaires, supporting compatibility with most specialty ceiling systems.



Seem 1 – 1.5" nominal aperture

- Seem 1 Recessed
- Seem 1 Pop-Down Lens Recessed
- Seem 1 Point Source Recessed
- Seem 1 Louver Recessed



Seem 2 – 2.5" nominal aperture

- Seem 2 LED Recessed
- Seem 2 Pop-Down Lens Recessed



Seem 4 – 4" nominal aperture

- Seem 4 LED Recessed
- Seem 4 Pop-Down Lens Recessed



Seem 6 – 6" nominal aperture

- Seem 6 LED Recessed
- Seem 6 Pop-Down Lens Recessed