

Mora®

INTEGRATED ACOUSTIC CEILING
AND LIGHTING SYSTEM

WORLD TIME ZONES



PEKIN
+8:00



TOKYO
+9:00



NEW YORK



LONDON
+0



MOSCOW
+3:00



FOCAL POINT®

Bringing It All To Light®

A brand of **legrand**

BLUSH

Create a signature piece and increase occupants' comfort with Mora®

Mora is an integrated acoustic ceiling and lighting system that adds movement and texture to the ceiling plane while optimizing the light levels and acoustics of interior environments. Specification is made easy with Mora Build, Mora Create and Mora Inspire, and the support of our dedicated team.



Mora Build

Square modules that are the building blocks of a ceiling system



Mora Create

Standard designs scaled to the dimensions of the room



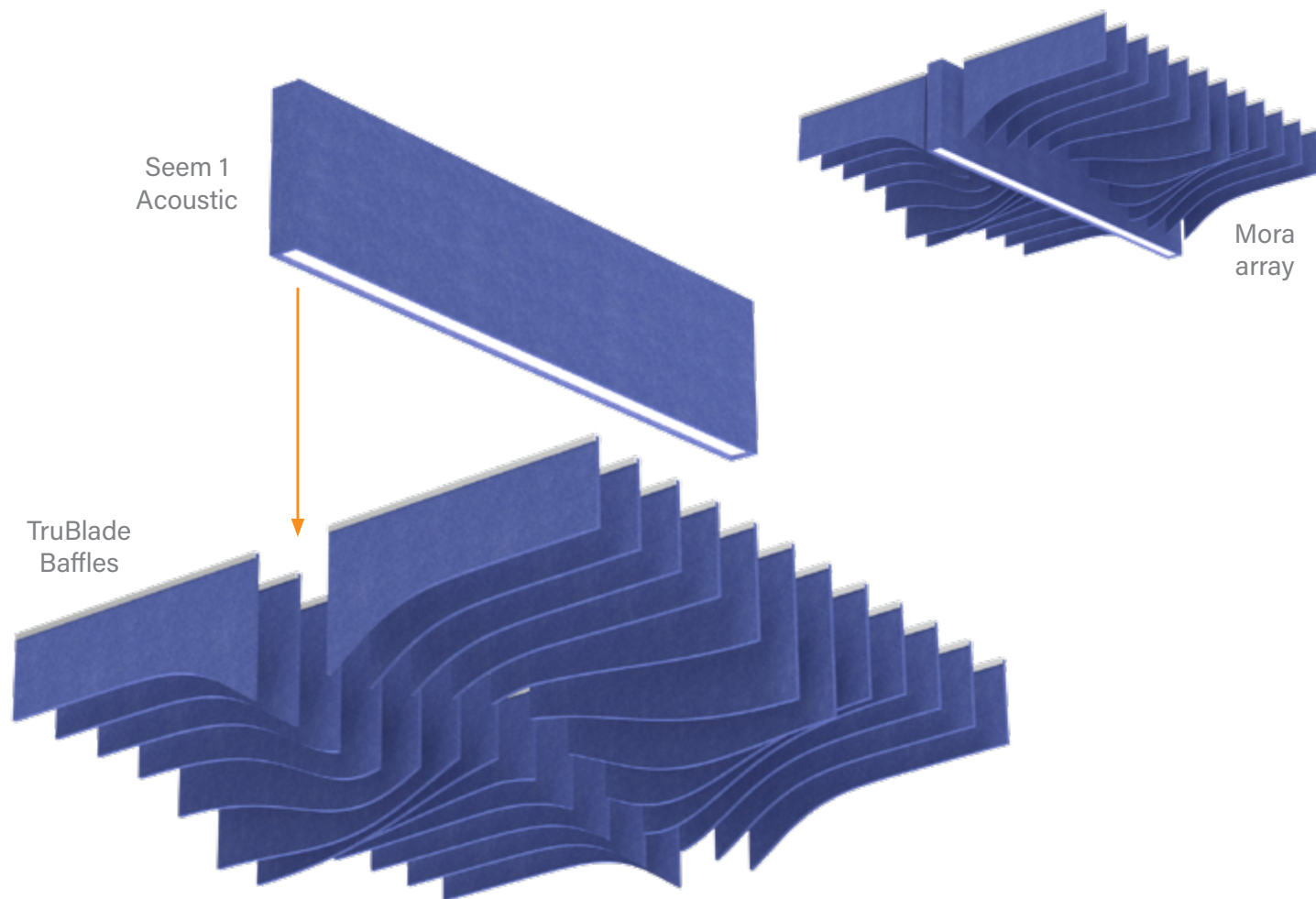
Mora Inspire

A custom design realized with the help of our team

Advantages of the Mora system

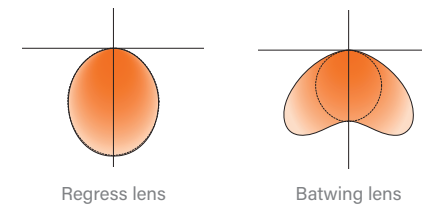
Mora leverages the light engine and acoustic performance of Seem® 1 Acoustic and the flexibility of the TruBlade™ unlit baffle to create exceptional ceiling arrays that not only enhance interior architecture, but also contribute to human comfort and well-being.

- **Integrated lighting and acoustic ceiling system**
 - Eases specification, ordering, delivery, and installation
 - Ensures perfect coordination of the lit and unlit components
- **Design support**
 - Lighting and acoustic calculations
 - Customization
- **Extensive lighting and design options**
 - Multiple shielding, lumen outputs, CCT, CRI, and driver/control options
 - Broad palette of eco-friendly PET felt colors



SEEM 1 ACOUSTIC

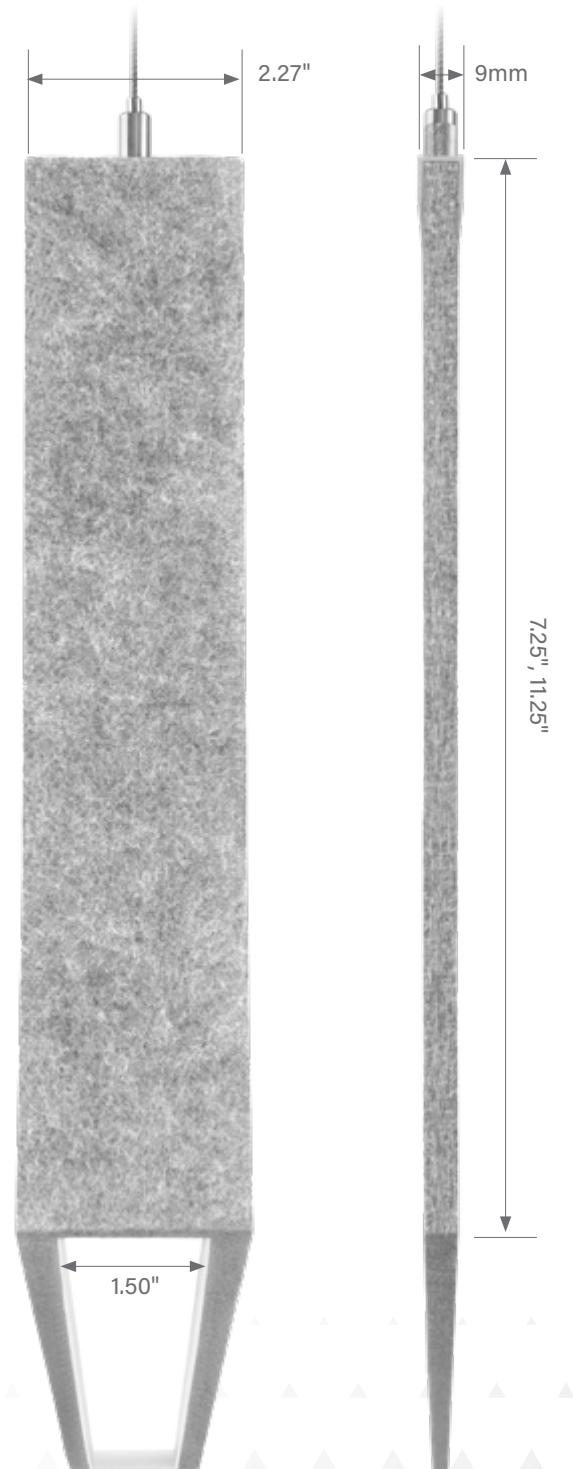
- Narrow luminaire: 1.5" lens aperture / 2.27" housing width
- Direct only light distribution
- Regress or batwing lens



- 100, 200, 300, 400 or 500 lumens per foot
- 3000K, 3500K or 4000K
- 80 or 90 CRI
- 0-10V, DALI or Lutron EcoSystem® dimming
- Uses AirCore™ Technology to maximize sound absorption and minimize ecological impact
- Some designs require a fixed luminaire length, others can be continuous runs

TRUBLADE

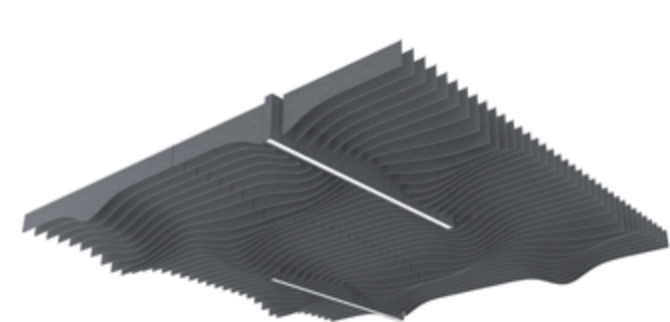
- 9mm baffle width
- Designed to optimize affordability, stability and straightness



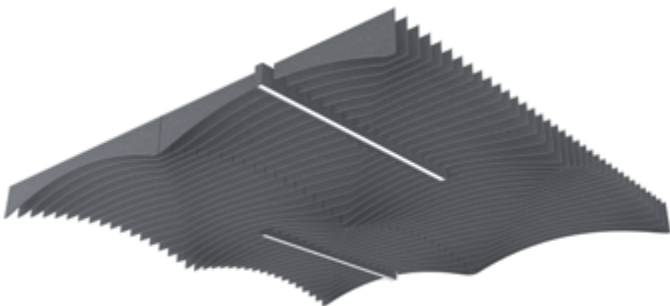
Select your level of customization with Mora Build, Mora Create, and Mora Inspire

MORA BUILD

Mora Build literally offers the building blocks to your next acoustic ceiling. The two standard designs of Arch and Wave are available in nominal square modules from 4 to 8 feet, lit or unlit. Several modules can be combined over large surface areas, resulting in rhythmic and playful ceilings.



Wave array
2 lit and 2 unlit modules



Arch array
2 lit and 2 unlit modules



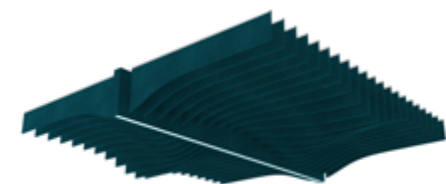
4x4



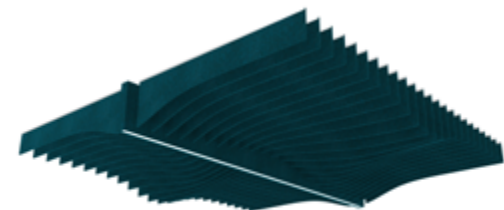
5x5



6x6



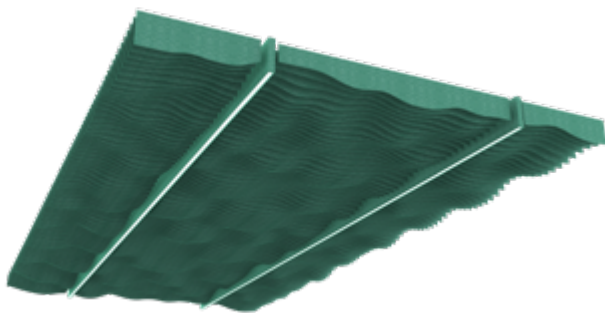
7x7



8x8

MORA CREATE

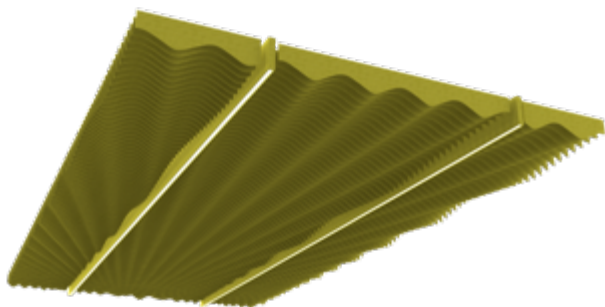
Mora Create gives you the freedom to design custom-sized arrays to fit the exact dimensions of your room using three designs: Ripple, Radiate, or Alpine. Each offers a unique visual aesthetic and allows for placement of continuous luminaires to fulfill the lighting requirements of the space.



Ripple



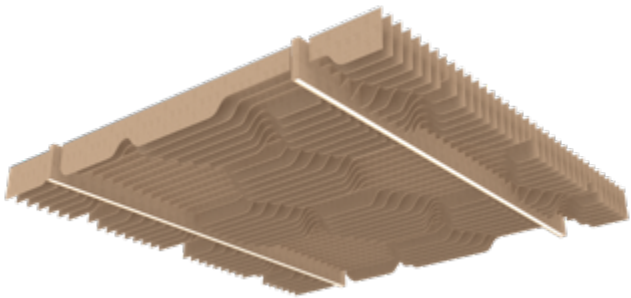
Alpine



Radiate

MORA INSPIRE

Let your imagination run wild with the support of our design and engineering team. We will turn your inspiration into a showpiece ceiling. Contact us at acoustic.solutions@focalpointlights.com to discuss your project.



How to specify Mora Build

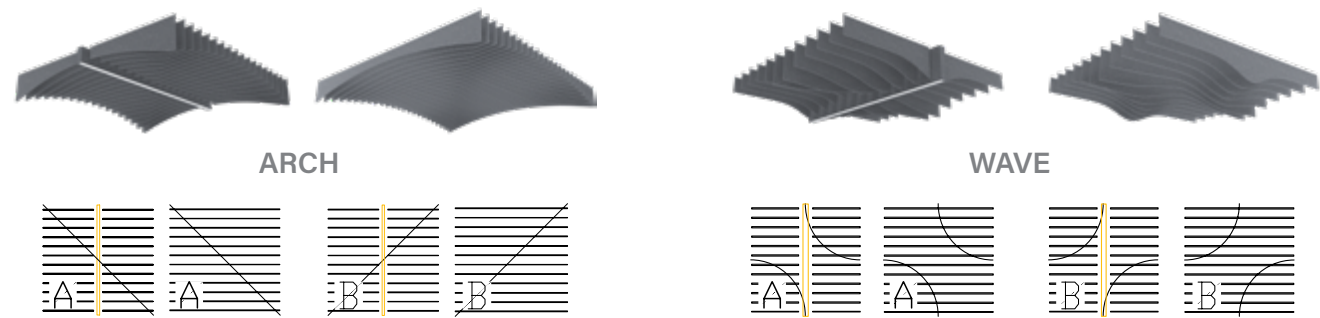
1. Determine the overall ceiling dimensions for the system.



2. Select your preferred design: Arch or Wave.

3. Select A or B style modules, or a combination of both.

The sequence of the baffles is reversed for A and B styles, yielding a totally different visual effect.



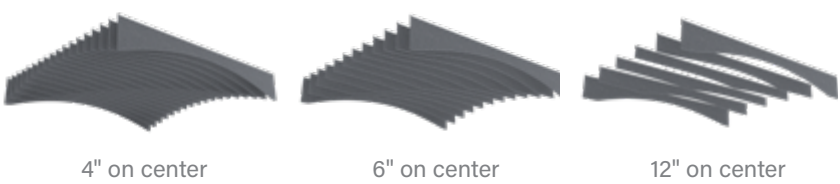
4. Determine the lighting requirements to select the module sizes.

Use the chart to view available options for luminaire on-center spacing.

Example: For 12ft on-center spacing, 4x4 or 6x6 modules can be selected.

| LIT AND UNLIT MODULE CONFIGURATIONS | MODULE SIZE | | | | |
|-------------------------------------|-----------------------------|------|------|------|------|
| | 4x4 | 5x5 | 6x6 | 7x7 | 8x8 |
| | On-center luminaire spacing | | | | |
| | 4ft | 5ft | 6ft | 7ft | 8ft |
| | 8ft | 10ft | 12ft | 14ft | 16ft |
| | 12ft | 15ft | 18ft | | |
| | 16ft | | | | |

5. Select the on-center spacing of the baffles based on acoustic and aesthetic needs.



That's it, you've just built a ceiling array that will optimize lighting and sound levels!

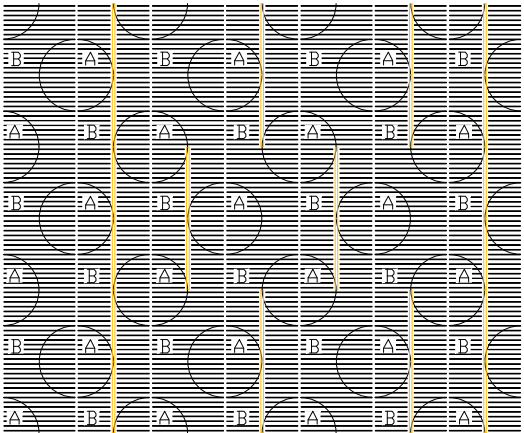


Higher Education Multi-Purpose

- System Dimensions: 36ft x 30ft (1,080ft²)
- Design: Wave
- Styles: Alternating A & B modules create a circular pattern
- Modules: 5x5 modules with 5ft & 10ft luminaire spacing
- Baffle spacing: 4" on center

SYSTEM CONFIGURATION

42 total modules
12 AMR-WVA-5x5-4OC, 9 AUMR-WVA-5x5-4OC
12 AMR-WVB- 5x5-4OC, 9 AUMR-WVB-5x5-4OC

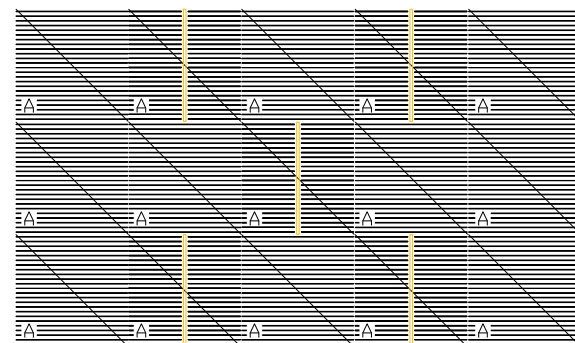


Cafe

1. System Dimensions: 24ft x 40ft (960ft²)
2. Design: Arch
3. Style: All A
4. Modules: 8x8 modules with 8ft & 16ft luminaire spacing
5. Baffle spacing: 4" on center

SYSTEM CONFIGURATION

15 total modules
5 AMR-AHA-8x8-4OC, 10 AUMR-AHA-8x8-4OC

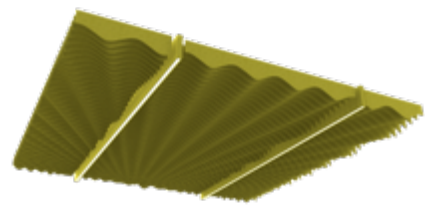


How to specify Mora Create

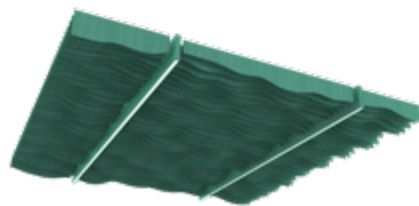
1. Determine the overall ceiling dimensions for the system.



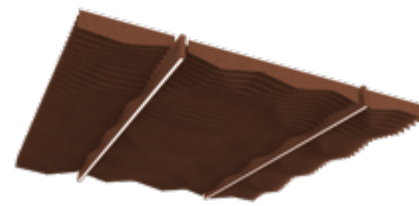
- 2. Select your preferred design:**



RADIATE



RIPPLE

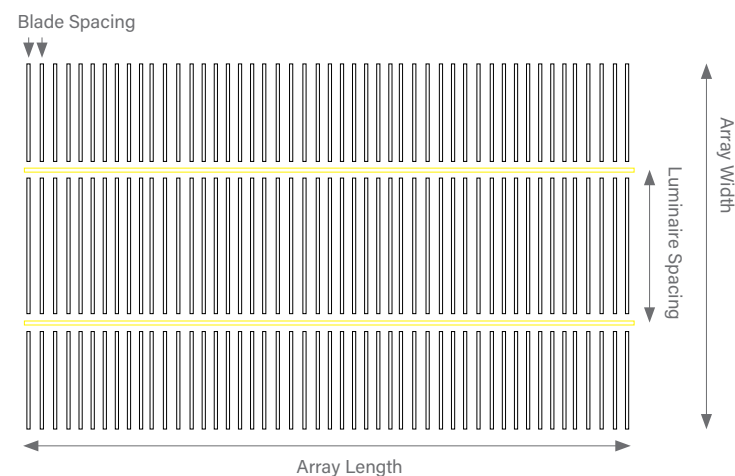


ALPINE

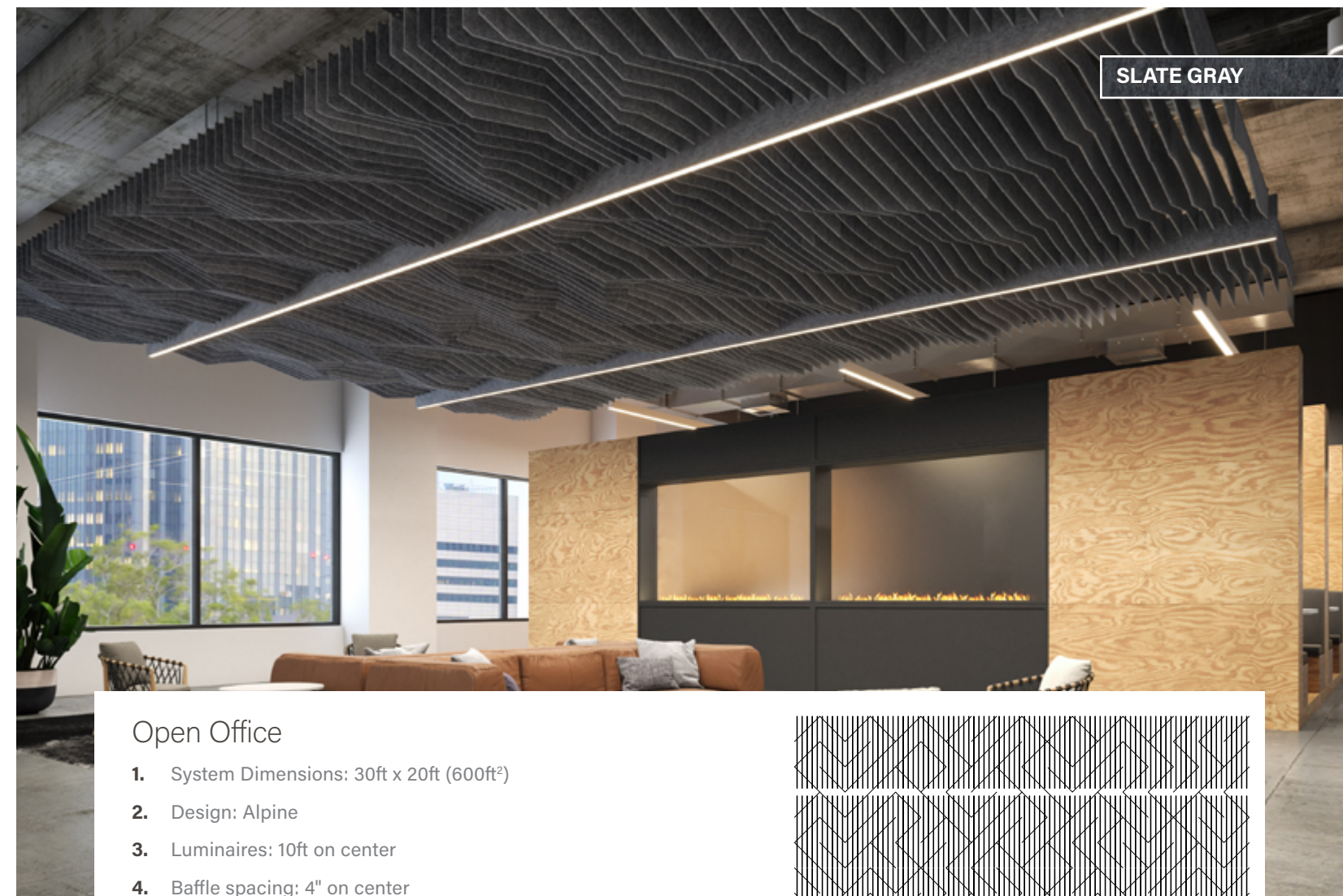
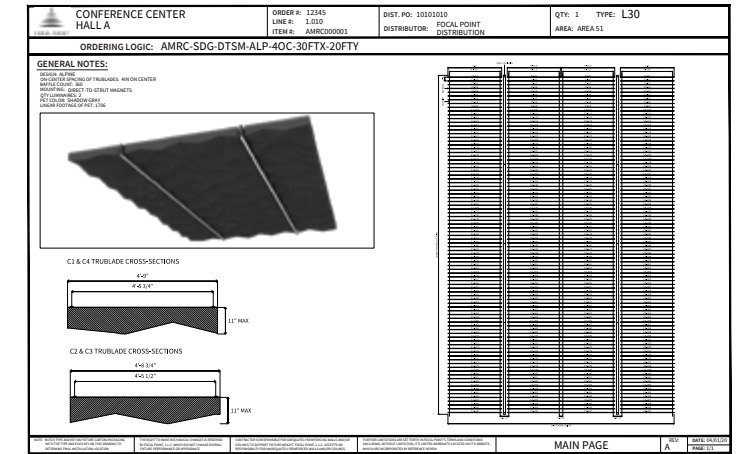
- 3.** Determine the lighting requirements to specify the placement of the luminaires.

4. Select the on-center spacing of the baffles based on acoustic and aesthetic needs.

5. Send us the filled out form attached to the Mora Create cut sheet. That's where the dialog will start with our team.



We will provide plan and 3D views of each Mora Create system as we work through the details with you. Our consultative approach will ensure perfect control of the process from the initial discussion, through to design and engineering, to the delivery of an easy-to-install integrated ceiling system.

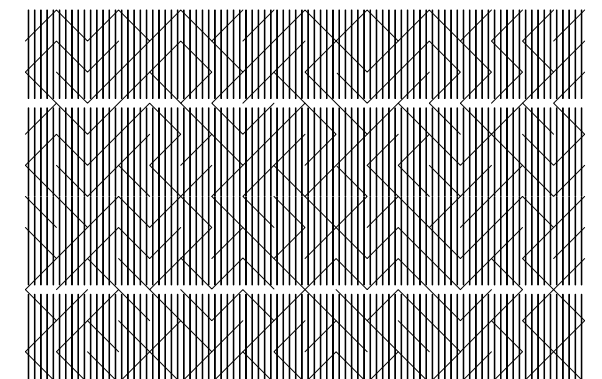


Open Office

1. System Dimensions: 30ft x 20ft (600ft²)
2. Design: Alpine
3. Luminaires: 10ft on center
4. Baffle spacing: 4" on center

SYSTEM CONFIGURATION

AMRC-ALP-30FTX-20FTY-4OC-PPD-10FTOC





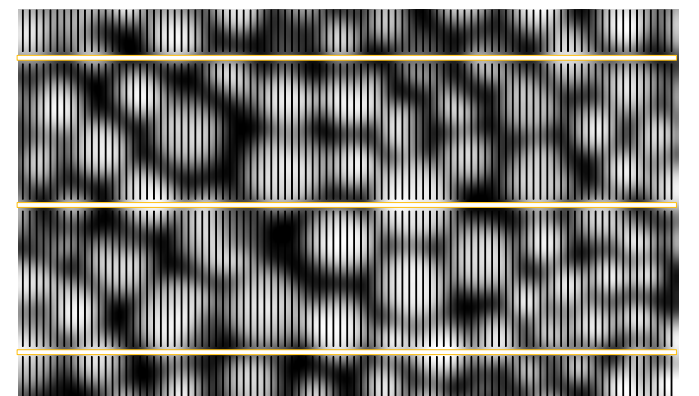
SEAFOAM

Library

1. System Dimensions: 50ft x 22ft (1,100ft²)
2. Design: Ripple
3. Luminaires: 8ft on center
4. Baffle spacing: 6" on center

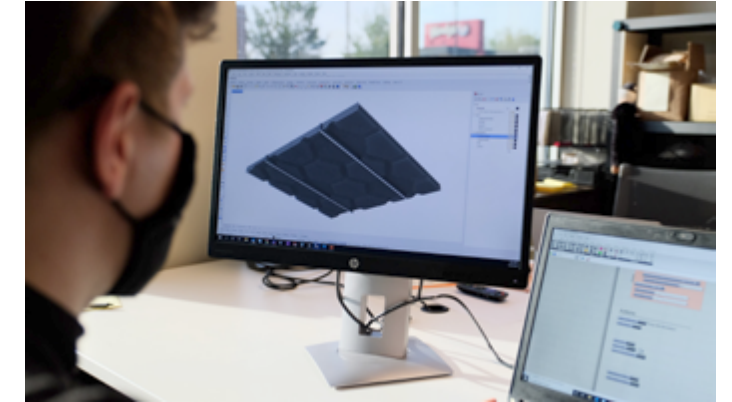
SYSTEM CONFIGURATION

AMRC-RPL-50FTX-22FTY-6OC-PPD-8FTOC



How to specify Mora Inspire

Looking for a real unique ceiling array?
Contact our team at
acoustic.solutions@focalpointlights.com
to discuss your idea.

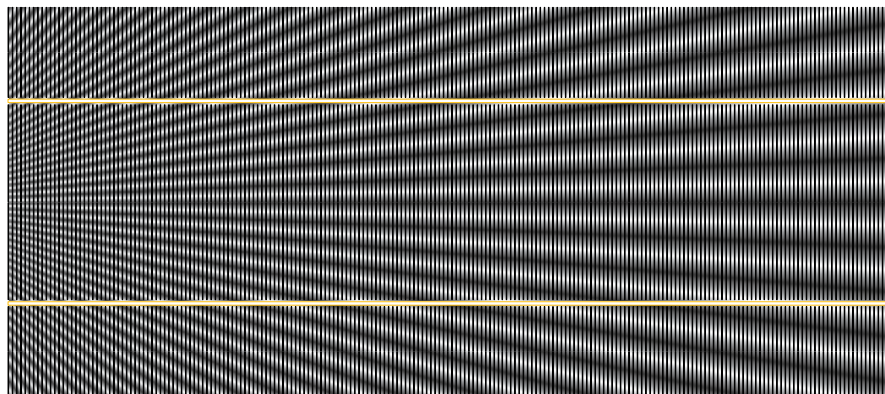


Atrium

1. System Dimensions: 86ft x 35ft (3,010ft²)
2. Design: Radiate
3. Luminaires: 16ft on center
4. Baffle spacing: 4" on center

SYSTEM CONFIGURATION

AMRC-RDT-86FTX-35FTY-4OC-PPD-16FTOC



SILVER GRAY

Airport Lounge

1. System Dimensions: 36ft x 30ft (1080ft²)
2. Design: Customer supplied, inspired by honeycomb
3. Luminaires: 10ft on center
5. Baffle spacing: 6ft on center

SYSTEM CONFIGURATION

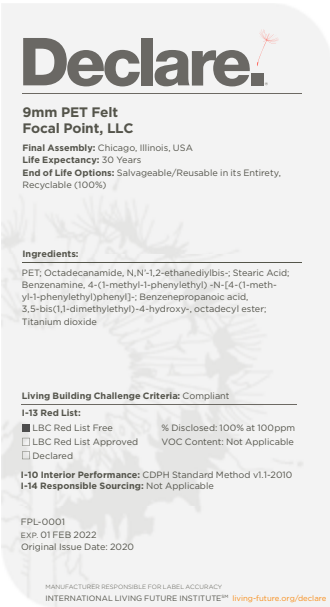
Custom



Contribute to building and occupants' health

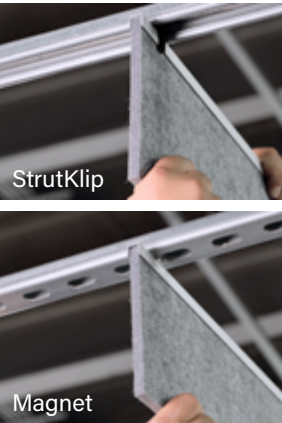
The acoustic performance will vary based on the configuration of each array. Refer to the ASTM C423 test reports for more information.

- 9mm thickness
- Polyester containing at least 50% of post-consumer recycled content, 100% recyclable
- Declare Certified, LBC Red List Free
- ASTM E-84 Class A / CAN ULC S102 fire rating
- Moisture resistant
- Polyethylene Terephthalate (PET) felt can be vacuumed to remove dust. For spills and stains, blot away any excessive moisture from spills off the material as quickly as possible. Wipe the area with a damp cloth and blot dry. If the staining persists, apply a small quantity of carpet cleaner mixed with water on a dampened cloth. Blot well after each application. Make sure to test this procedure in a discreet area before you use it in a visible area.



Speed up installation

Each Mora array ships with clear installation instructions, a spacer tool, labeling of each baffle, and packaging according to the installation sequence. This is to help facilitate the work of the installer, reduce the risk for errors, and minimize labor costs. Clips or magnets make installation a breeze; cable suspension is also available.



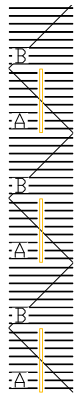
PINEAPPLE

Healthcare

1. System Dimensions: 4ft x 40ft (160ft²)
2. Design: Arch
3. Style: Alternating A & B styles
4. Modules: 4x4 modules, 4ft luminaire spacing
5. Baffle spacing: 6" on center

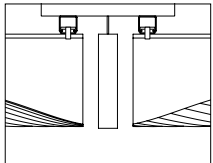
SYSTEM CONFIGURATION

27 total modules
14 AMR-AHA-PNA-44-6OC, 13 AUMR-AHB-PNA-44-6OC

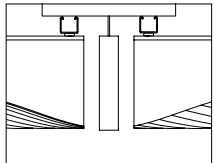


MOUNTING OPTIONS

- Direct-to-strut luminaire with StrutKlip or magnet blade mounting

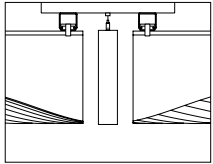


StrutKlip

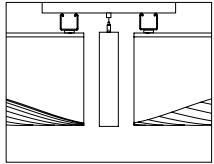


Magnet

- Suspended luminaire with StrutKlip or magnet blade mounting

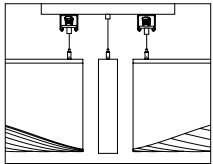


StrutKlip



Magnet

- Suspended luminaire and baffles



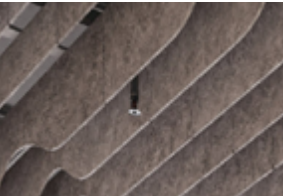
Cable

SPACER TOOL



One spacer tool allows for 4", 6" or 12" spacing.

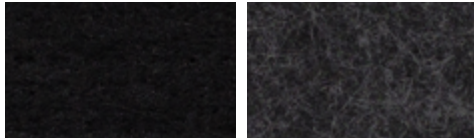
SPRINKLER INTEGRATION



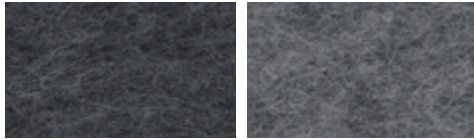
All installations must comply with International Building Code (IBC) sections 903.2.1 through 903.2.12 and your local fire codes.

PET Colors

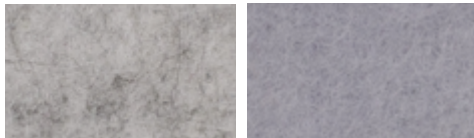
STANDARD COLORS



PURE BLACK **PBK** CHARCOAL GRAY **CHG**



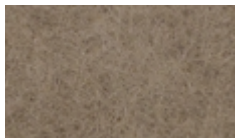
SLATE **SLT** SHADOW GRAY **SDG**



SILVER GRAY **SLG** PEARL ICE **PIC**

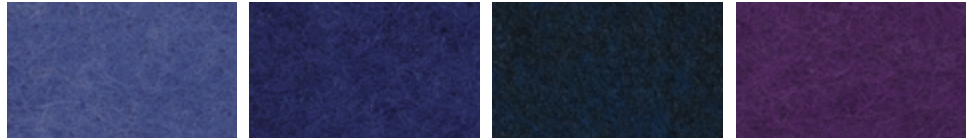


CLASSIC WHITE **CWH** NATURAL LINEN **NTL**



HAZELWOOD **HZW**

PREMIUM COLORS*



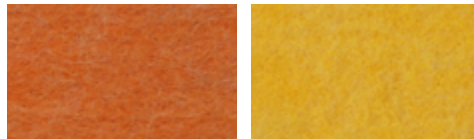
CORNFLOWER BLUE **CFB** DENIM BLUE **DNB** MIDNIGHT BLUE **MNB** DEEP PURPLE **DPP**



BRICK RED **BRD** CHERRY RED **CHR** BERRY **BRY** BLUSH **BLS**



DEEP WATER **DWT** SEAFOAM **SFM** EMERALD GREEN **EMG** LIMESTONE **LMS**



CARROT **CRT** PINEAPPLE **PNA**

*Contact factory for lead time and pricing.

For more information on how to specify acoustic systems, or for general inquiries regarding the Focal Point Acoustic Solutions offering, please email acoustic.solutions@focalpointlights.com or contact your Focal Point representative.



FOCAL POINT®

Bringing It All To Light®



©2025 Focal Point, LLC. 4141 S. Pulaski Road, Chicago, IL 60632 | T 773.2479494 | www.focalpointlights.com. All rights reserved. "Focal Point", "Seem", "AirCore", "Mora", "TruBlade", "Bringing It All To Light" and the light-ray graphic are trademarks or registered trademarks of Focal Point, LLC. Visit focalpointlights.com for specifications and other details on our entire Focal Point catalog.

Front cover:

Mora Create Radiate, 86ft x 35ft (3010ft²),
4" on-center blade spacing,
16ft on-center luminaire spacing,
Lime Green (Discontinued)

Page 1:

Mora Build Wave, 18ft x 18ft (324ft²),
B style, 6x6 modules,
6" on-center blade spacing,
Blush

July 2025 C