



FOCAL POINT®

Bringing It All To Light®



ID+ 2.5" PETITE.
MIGHTY.
COMPREHENSIVE.

A brand of **l**egrand

A COMPREHENSIVE SOLUTION

The ID+ 2.5" Downlight and Wall Wash was designed with flexibility in mind. A shallow, 2.64" housing, combined with light outputs up to 1900 lumens and a variety of beam spreads, suitable for accent lighting, task lighting, and general illumination, make it a perfect small-aperture solution for residential, commercial, educational, and hospitality applications.

Light quality is also intrinsic to the design of the downlight and wall wash, with standard white light at CRI 80, 90 or 97 as well as two warm dim ranges at CRI 90 that mimic the black body curves of halogen and incandescent light sources.

The ID+ 2.5" Downlight and Wall Wash is engineered to please not only lighting professionals and building occupants, but also contractors with features such as ceiling thickness adjustability, a wood ceiling installation kit, below ceiling driver and light engine access, and a twist & lock mechanism that allows to swap trims in the field.





A MIGHTY SET OF OPTIONS

Superior optics and a powerful light engine provide light outputs from 500lm to 1900lm, making the petite luminaire suitable for high-ceiling applications. Narrow Flood (20°) to Super Wide Flood (90°) beam spreads provide a solution for ambient, task, and accent lighting.

Optic / Distribution	Downlight							Wall Wash
	Narrow Flood	Flood 1	Flood 2	Wide Flood 1	Wide Flood 2	Very Wide Flood	Super Wide Flood	
500	○ □	○ □	○ □	○ □	○ □	○ □	○ □	○ □
700	○ □	○ □	○ □	○ □	○ □	○ □	○ □	○ □
900	● ■	● ■	● ■	● ■	● ■	● ■	● ■	● ■
1100	○ □	○ □	○ □	○ □	○ □	○ □	○ □	○ □
1300	○ □	○ □	○ □	○ □	○ □	○ □	○ □	○ □
1500	○ □	○ □	○ □	○ □	○ □	○ □	○ □	○ □
1700	○ □	○ □	○ □	○ □	○ □	○ □	○ □	○ □
1900	○ □	○ □	○ □	○ □	○ □	○ □	○ □	○ □
○ Round □ Square ● ■ Standard White & Warm Dim available								

Color Temperature Options

Standard white color temperatures at CRI 80, 90 and 97, as well as two Warm Dim ranges at CRI 90 offer the flexibility required to enhance interior architecture and personalize each space with occupants' comfort in mind.



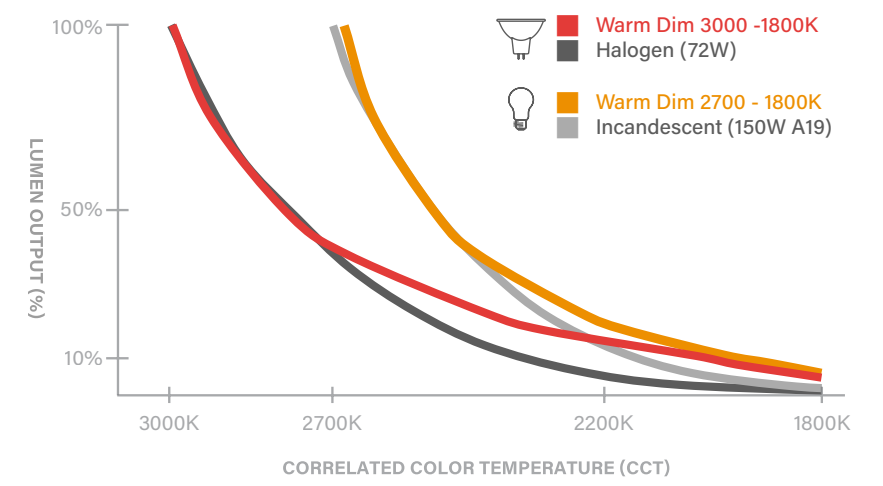
Standard White

2700K, 3000K, 3500K and 4000K

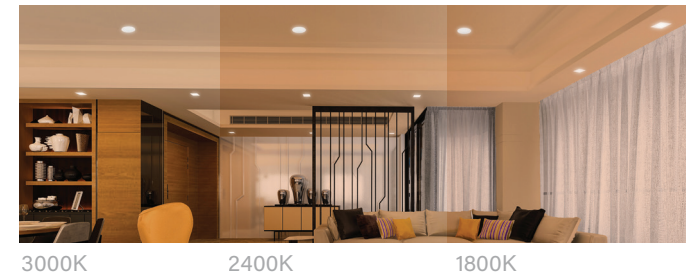


WD Warm Dim

The 3000K to 1800K and 2700K to 1800K ranges mimic the black body curves of halogen and incandescent light sources, respectively.

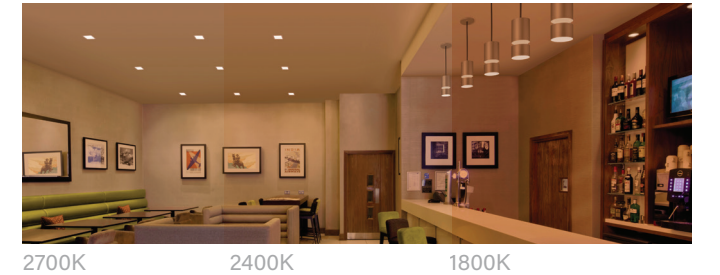


Halogen Range



3000K 2400K 1800K

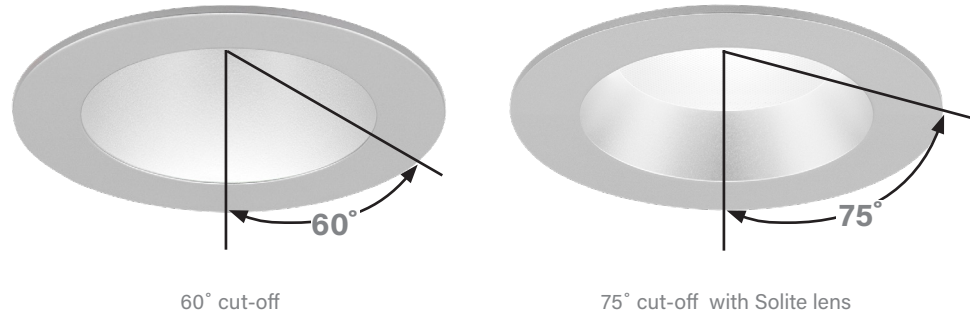
Incandescent Range



2700K 2400K 1800K

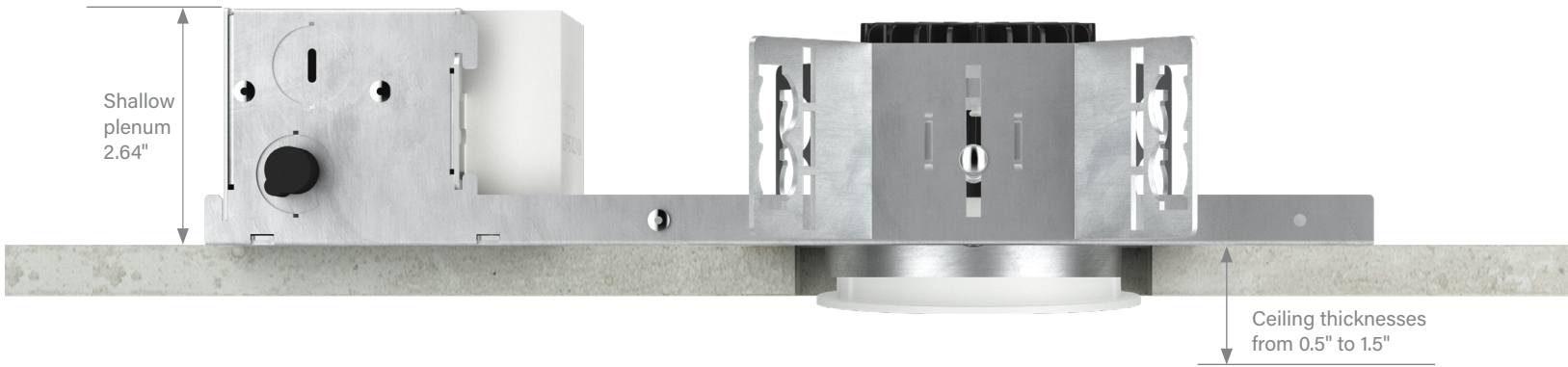
Reflectors

Thoughtfully designed using high-quality optics, two cut-off options, 60° and 75°, support a shallow luminaire profile without compromising visual comfort. The use of a shallow Solite lens delivers uniform light distributions for beam spreads of 50°, 60°, 70° and 90°, resulting in ultra-quiet ceilings.

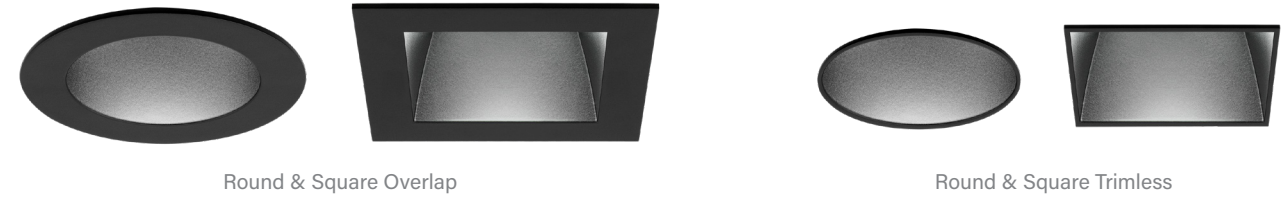


Housings

- Thermally Protected, Non-IC
- Thermally Protected, Non-IC Wood

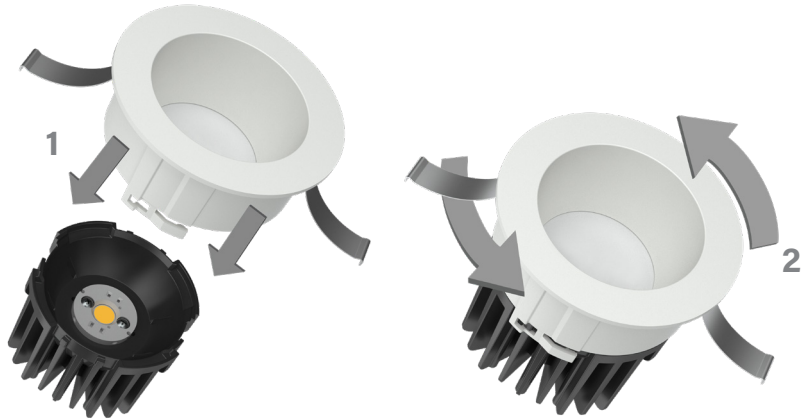


- IC Rated / Airtight
- Chicago Plenum



Twist & Lock Mechanism

Swap trims or change between downlight and wall wash in the field.



Finishes



Wood Kit

The small aperture with trimless option and wood kit enable an elegant solution for wood ceilings.



ID+ a complete downlight solution

With a variety of aperture sizes, shapes, lumen packages, and distribution options, ID+ Downlights meet the needs of various applications. Used together with the ID+ Cylinders, these luminaires provide illumination for every area and feature, bringing beauty and uniformity to interiors.

