



Enhancing team collaboration with Tazo



An elegant free-standing luminaire, Tazo provided an ideal solution for HGA's Milwaukee offices. Located within the Marine Terminal Building, a former warehouse connecting goods shipped via the waterway to ground transportation, the unique interior architecture of the office posed an interesting challenge with a recent remodel.

Raised floors, implemented to mitigate the original sloping floor that facilitated the movement of goods upwards from the ships, resulted in diminishing ceiling height, leaving little room for ceiling mount luminaires. The floor-standing, easily reconfigurable Tazo was the answer for Catherine Hall, Senior Lighting Designer.

"They fit so seamlessly into the architecture of the office that folks sometimes don't even realize they are there until they use the space for the first time. They love having power solutions and control of the task light output."

Catherine Hall

Standing at 84" tall, Tazo is an elegant, free-standing luminaire, a convenient and reconfigurable task and ambient lighting solution. Single- and dual-arm form factors, as well as optional integrated local dimming, power receptacles, occupancy sensing, and wireless connectivity to lighting control systems make it adaptable to the needs of many spaces and users.



User conveniences include local dimming controls, USB-A/USB-C & 120-volt charging ports.



The team at HGA opted for Tazo Single, Sans-Serifs in matte white, which blends seamlessly in the interior architecture of the space. The matte white louvers provide comfortable task lighting for the teams meeting in the collaboration pods while the indirect light helps fill dark spots between the clouds. Each light source delivers 1500 lumens at 3500K, 90 CRI.

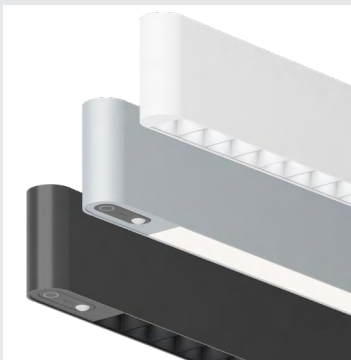
A highly configurable luminaire



Tazo Single / Tazo Dual offer optional occupancy and photo sensing for the direct light source, and networked control of the indirect light source



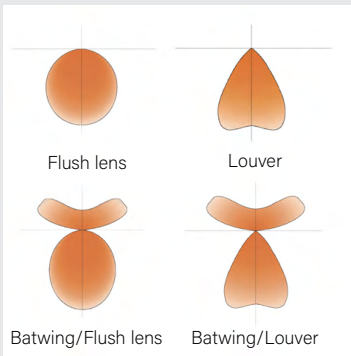
Profiles (Tazo Single only): Flat Serif, Rounded Serif, Sans-Serif



Design flexibility with lensed or louvered task lighting, three luminaire colors, five louver finishes



A convenient, 120V cord & plug base allows for easy reconfiguration of spaces



Lensed or louvered direct, optional batwing indirect illumination