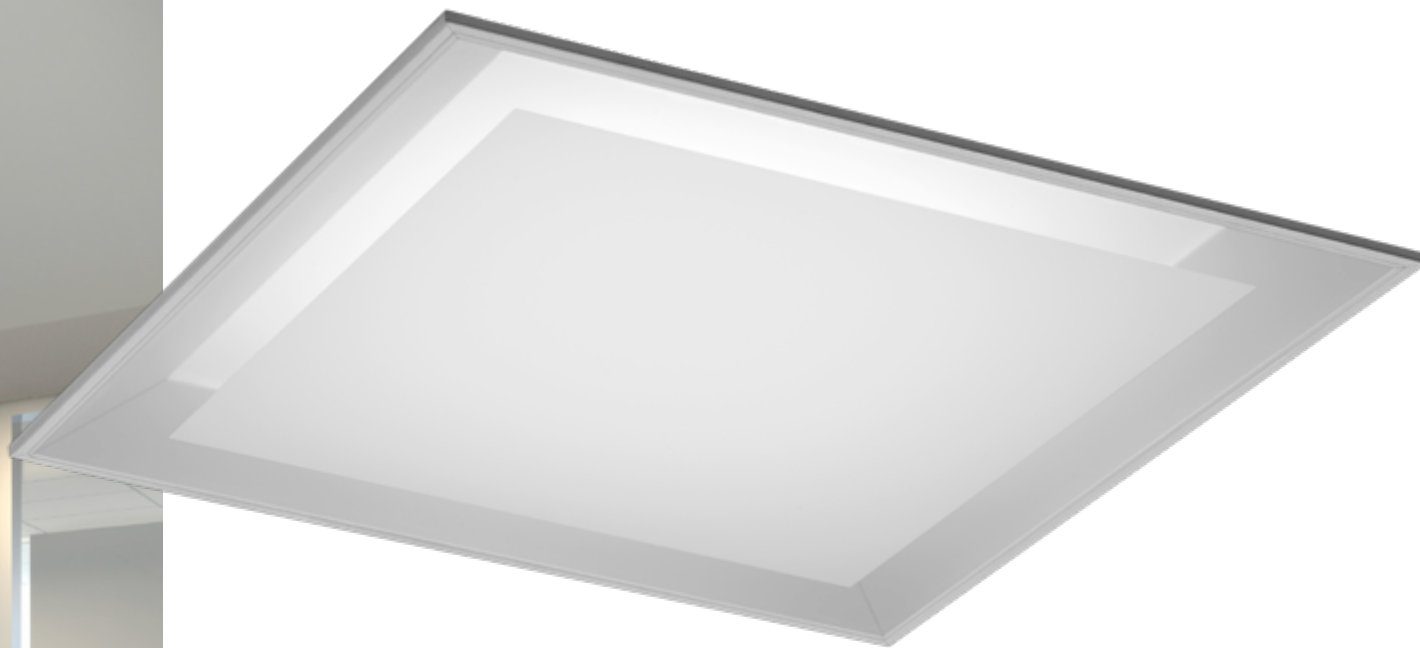




FOCAL POINT®

Zephyr®





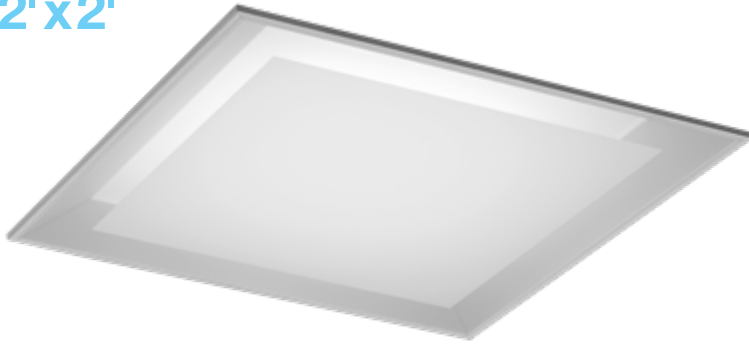
Zephyr[®]

Architectural innovation and natural inspiration come together with Zephyr. Focal Point's non-directional recessed lighting solution features a unique design which creates the impression that the bottom lens is floating above you, like a cloud floats in the sky. Offered in 2' x 2' and 1' x 4' sizes, Zephyr also utilizes a dual lens optical solution to control brightness while maintaining high efficiency. With its innovative architectural aesthetic, Zephyr floats above it all bringing comfort and visual harmony to your space.

PERFORMANCE

without compromise

2'x2'



1'x4'

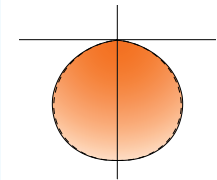
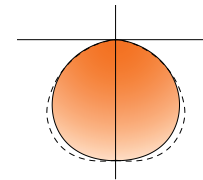


LENS TECHNOLOGY

Zephyr's lens element features an optical microstructure providing glare control and high levels of efficiency.

LUMEN OUTPUT	1'x4'		2'x2'	
	WATTS	LPW	WATTS	LPW
1000	11	94	9	111
1500	15	100	13	116
2000	20	105	18	113
2500	25	102	23	109
3000	30	100	27	111
3500	37	97	33	107
4000	44	93	39	104
4500	40	112	38	120
5000	46	109	43	117
5500	51	108	48	115
6000	58	106	—	—
6500	61	106	—	—
7000	67	104	—	—
7500	73	104	—	—

DISTRIBUTION
CURVE





RIGHT LIGHT

Right Light provides a broad range of standard delivered lumen outputs that stay consistent as technology upgrades occur. In addition, tunable drivers allow for custom wattage and lumen outputs to be specified within the standard range.

Preferred Light *Experience* BETTER COLOR

Preferred Light™ uses advanced LED technology to enhance spaces and provide more comfortable environments for building occupants. The uniquely engineered solution delivers lighting that effectively renders color for human preference, creating more comfortable and visually appealing environments.

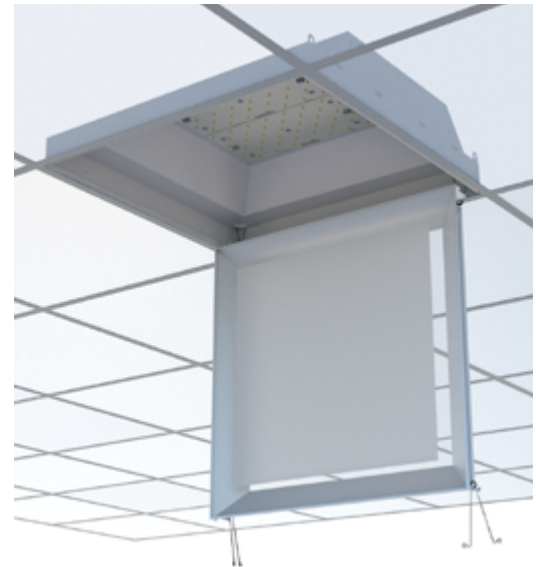




CLEAN LINES *and construction*

ENCLOSED OPTIC

Zephyr's unique lens design provides an enclosed optical assembly which makes it ideally suited for applications that require low maintenance.

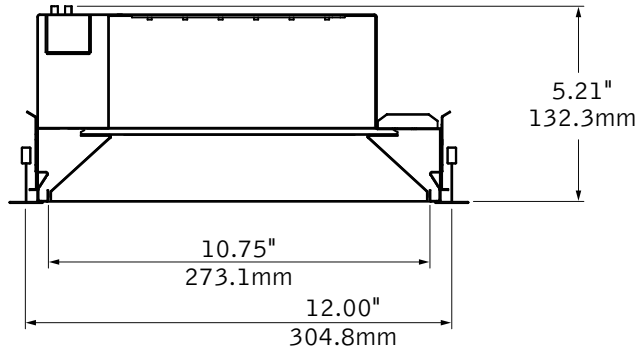


EASY ACCESS FROM BELOW

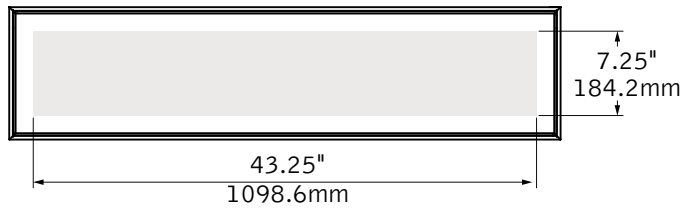
The one-piece hinging optical assembly allows for easy access to LEDs and driver.



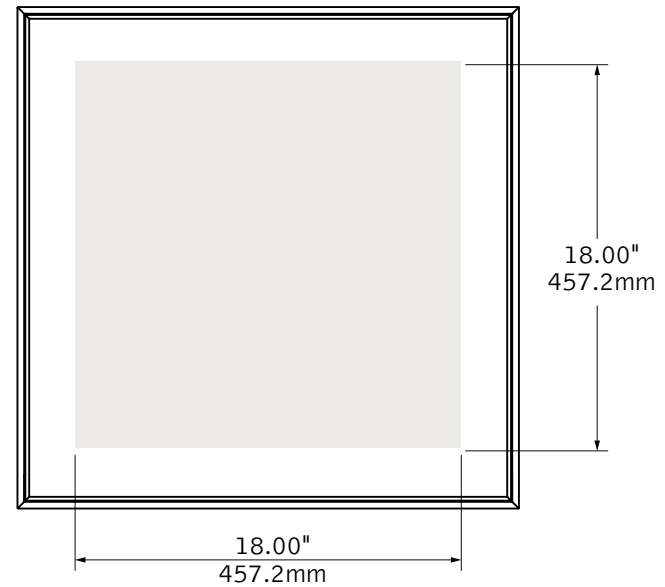
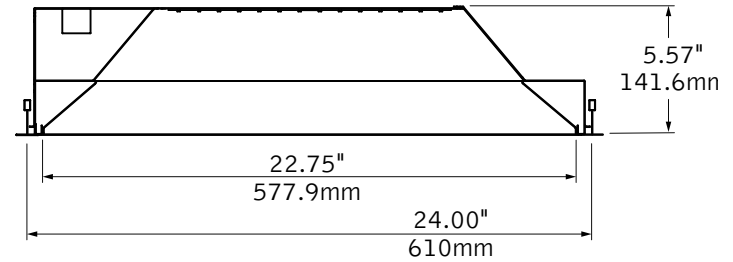
1'x4'



347V Housing Height = 6.36"/161.5mm



2'x2'



FOCAL POINT®

Bringing It All To Light®



*Consult cutsheets at focalpointlights.com for air return housing heights & restrictions.

©2019 Focal Point, LLC. 4141 S. Pulaski Road, Chicago, IL 60632 T 773.247.9494 | focalpointlights.com. All rights reserved. "Focal Point", "Bringing It All To Light", "Zephyr", and the light-ray graphic are trademarks or registered trademarks of Focal Point, LLC.

MKT#1119