

Tazo® Dual

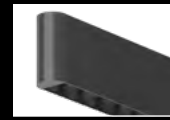
FREE-STANDING LUMINAIRE



FOCAL POINT®



Lens detail



Louver detail



Optional Integrated Sensor detail



Integrated Controls detail

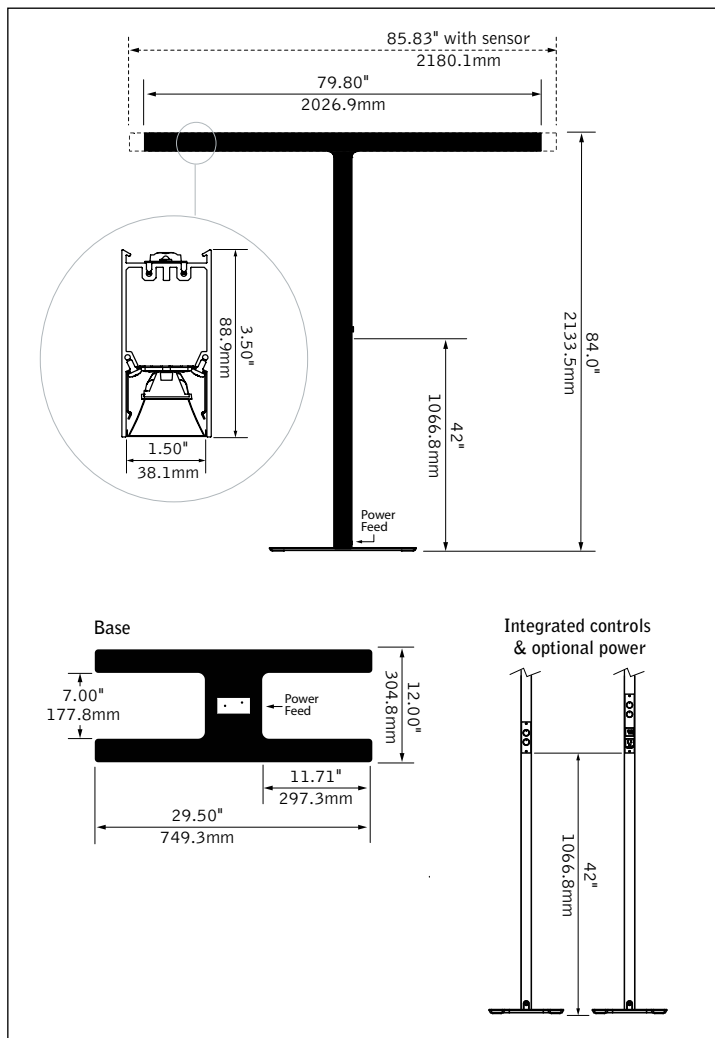


Optional Integrated Power detail



Base detail

DIMENSIONAL DATA



FEATURES

Architectural free-standing luminaire supports the trend for flexible lighting solutions in today's office spaces and anywhere people work.

Flush lens or louver direct shielding option with optional batwing indirect distribution.

Frosted acrylic lenses provide uninterrupted illumination, without pixels or shadows.

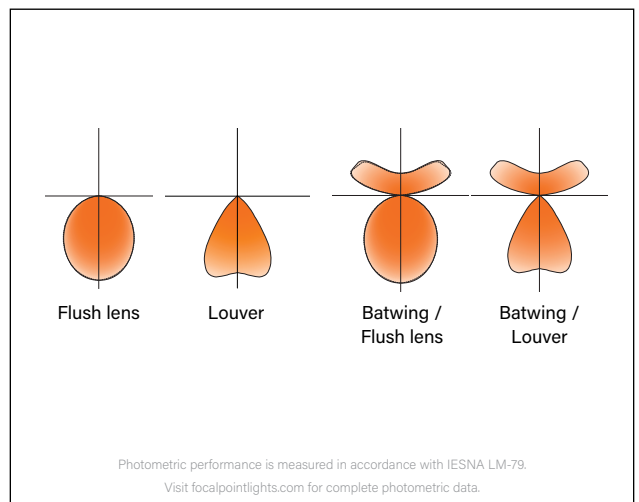
Deeply regressed louver cells provide 60° cut-off from light source to promote visual comfort.

Regular and high output versions provide >100 LPW.

Integrated user controls, occupancy and photo sensor, and networked wireless lighting control options.

Optional integrated USB-A / USB-C and 120-V charging ports.

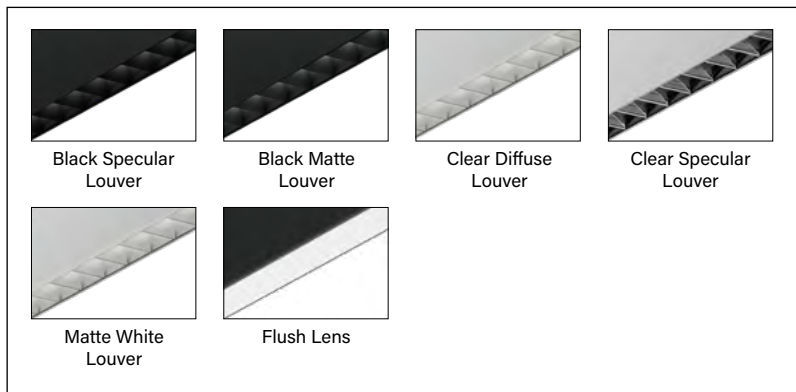
PERFORMANCE



fixture:

project:

OPTICAL OPTIONS



1% DIMMING CONTROLS REFERENCE

Ordering Code	Description	Dimming Controls	Diagram	Occupancy & Photo Sensing	Network Control*
1C	All on/off			-	-
2S	Independent control of left & right			-	-
2SOCL	Independent control of left & right plus occupancy sensor			Direct	-
2C	Independent control of indirect & direct			-	-
3C	Independent control of indirect, left & right			-	-
3W	Wireless indirect, independent control of left & right			-	Indirect
3WOCL	Wireless indirect, independent control of left & right plus occupancy sensor			Direct	Indirect

*Network control utilizes Lutron Vive. Consult factory for integration with other wireless Connected Solutions.

PERFORMANCE CHART*

Indirect Output	Indirect Lumens	Direct Output	Direct Lumens per side	Total Lumens	Total Watts	LPW
Regular (RUP)	3000	Regular (RDN)	1500	6000	51W	118
		High (HDN)	1875	6750	59W	115
High (HUP)	3750	Regular (RDN)	1500	6750	56W	121
		High (HDN)	1875	7500	64W	117
Direct only (NO)	0	Regular (RDN)	1500	3000	29W	103
		High (HDN)	1875	3750	37W	101

*Based on 3500K, 80CRI, Matte Black Louver. Delivered lumens may vary +/- 5%. Actual wattage may vary +/- 5%. Total watts based on light module only, not including integrated power.

ORDERING

Luminaire Series	Tazo Dual	FTZD
Profile	Rounded T	RT
Shielding	Batwing Indirect + Flush Lens Direct	BWFL
	Batwing Indirect + Louver Direct	BWLC
	Flush Lens Direct only	FL
	Louver Direct only	LC
Direct Lumen Output	Regular Output, 3000 Lumens	RDN
	High Output, 3750 Lumens	HDN
Indirect Lumen Output	Regular Output, 3000 Lumens	RUP
	High Output, 3750 Lumens	HUP
	Direct only, no uplight <small>(Required for Direct only options)</small>	NO
Color Temperature	2700K, 80CRI or 90 CRI	27K or 927K
	3000K, 80CRI or 90 CRI	30K or 930K
	3500K, 80CRI or 90 CRI	35K or 935K
	4000K, 80CRI or 90 CRI	40K or 940K
Dimming Controls	Single Control	All on/off 1C
	Dual Control <small>(FL or LC only)</small>	Independent control left/right 2S + occupancy sensor 2SOCL
	Dual Control <small>(BWFL or BWLC only)</small>	Independent control indirect/direct 2C
	Three-way Control <small>(BWFL or BWLC only)</small>	Independent control indirect/left/right 3C
	Wireless Network Control Indirect <small>(BWFL or BWLC only)</small>	Independent control left/right 3W + occupancy sensor 3WOCL
Integrated Power Options	No Integrated Power	NP
	AC Outlet & USB-A/USB-C power receptacles both sides	2AUC
Mounting Base	Portable Floor Standing <small>(Consult factory for alternate mounting)</small>	PFS
Power Feed	Black Cord & Plug 120 Volt <small>(Consult factory for others)</small>	CRD
Louver Finish <small>(Louver options only. Leave blank for lensed options.)</small>	Matte Black	BK
	Black Specular	BS
	Clear Diffuse	CD
	Clear Specular	CS
	Matte White	WH
Factory Options	Adjustable leveling feet (set of 4) <small>(Consult factory. Recommended only for unlevel floors, can accommodate up to 0.125" variation per square foot. Increases overall height by 0.5")</small>	ALF
Housing Finish	Black	BK
	Matte White	WH
	Titanium Silver	TS

SPECIFICATIONS

LED System

Proprietary linear LED module incorporates premium LEDs on a robust platform to achieve excellent thermal management. LEDs are placed to promote a uniform appearance. Available in 2700K, 3000K, 3500K or 4000K with both 80 and 90 CRI options. LED modules and drivers are replaceable from below. Color accuracy <3 SDCM.

Construction

Extruded aluminum housing. Cast aluminum end caps. Luminaire will not exceed 55lbs

Optic

60-degree cut-off to louvered light source and its image. Lensed reflectors fabricated of 24 Ga. steel finished in High Reflectance White powder coat. Extruded acrylic lens .085" thick with frosted finish continuous.

Electrical

120 Volt, 6ft cord and plug. Optional integrated power: One (1) 5A tamper-resistant outlet (125VAC) for small electronics. One (1) USB-A and USB-C combination outlet: 15W shared for phones, laptops and other small electronics.

Optional Networked controls

Wireless networked controls configured using Lutron Vive, contact factory for other wireless control options.

Labels

UL and cUL listed. Suitable for Dry Locations, indoor use only.

Finish

Polyester powder coat applied over a multi-stage pre-treatment. Black cord.

Lumen Maintenance

Linear Source

Reported: L70 at >61,000 hours
L90 at >61,000 hours

Calculated: L70 at 470,000 hours
L90 at 115,000 hours

Louvered Sources

Reported: L70 at >54,000 hours
L90 at 43,000 hours

Calculated: L70 at 138,000 hours
L90 at 43,000 hours

Derived from EPA TM-21 calculator. Based on typical conditions, consult factory for additional data.

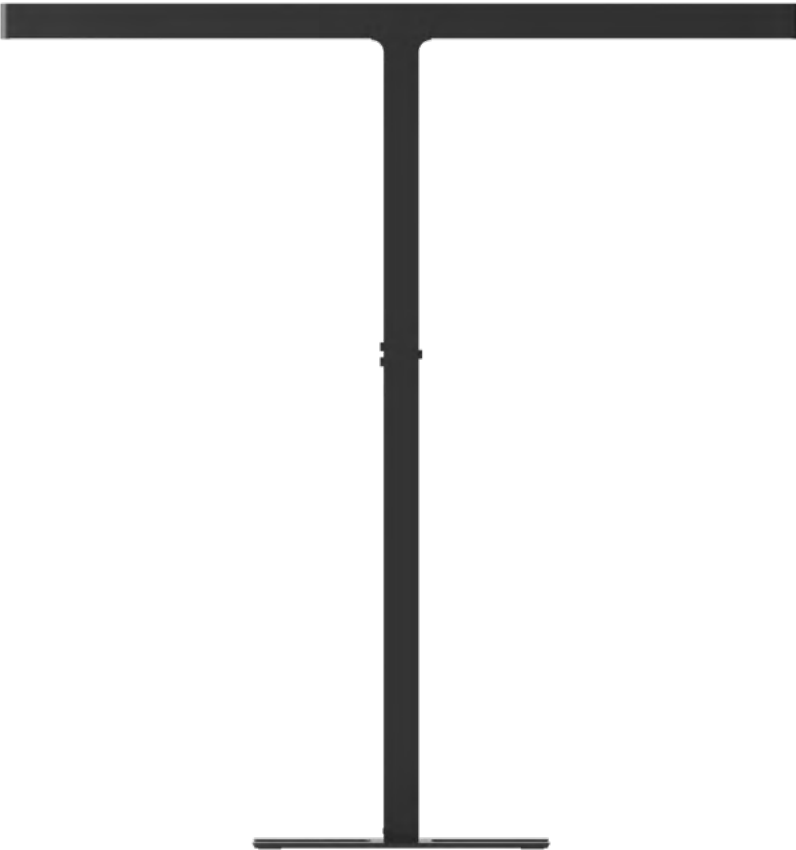
Reliability

At Focal Point, our products are designed to stand the test of time. Each luminaire is engineered using superior components, manufactured with the utmost care and rigorously tested. Contact us for reliability data.

Warranty

LED system rated for operation in ambient environments up to 25°C. 5 year limited warranty.

PROFILE



CONTROL PANEL/HOUSING FINISHES



Black



Matte White



Titanium Silver

LUMEN MULTIPLIER TABLE

Lens Color Temperature & CRI

Color Temperature	Multiplier
2700K, 80+ CRI [27K]	0.96
2700K, 90+ CRI [927K]	0.79
3000K, 80+ CRI [30K]	1.00
3000K, 90+ CRI [930K]	0.82
3500K, 80+ CRI [35K]	1.00
3500K, 90+ CRI [935K]	0.84
4000K, 80+ CRI [40K]	1.01
4000K, 90+ CRI [940K]	0.86

Louver Color Temperature & CRI

Color Temperature	Multiplier
2700K, 80+ CRI [27K]	0.95
2700K, 90+ CRI [927K]	0.80
3000K, 80+ CRI [30K]	0.97
3000K, 90+ CRI [930K]	0.83
3500K, 80+ CRI [35K]	1.00
3500K, 90+ CRI [935K]	0.85
4000K, 80+ CRI [40K]	1.03
4000K, 90+ CRI [940K]	0.87

Louver Finish

Color	Multiplier
Matte Black [BK]	1.00
Black Specular [BS]	1.00
Clear Diffuse [CD]	1.07
Clear Specular [CS]	1.10
Matte White [WH]	1.11

How To Use Lumen Multipliers

Formula: (Lumen Output Value) x (Color Temperature & CRI) x (Finish)

Louver Example:

FTZD-RDN (1500)-930K-BS

(1500) x (0.83) x (1.00) ≈ 1245 lm (estimated delivered lumens)