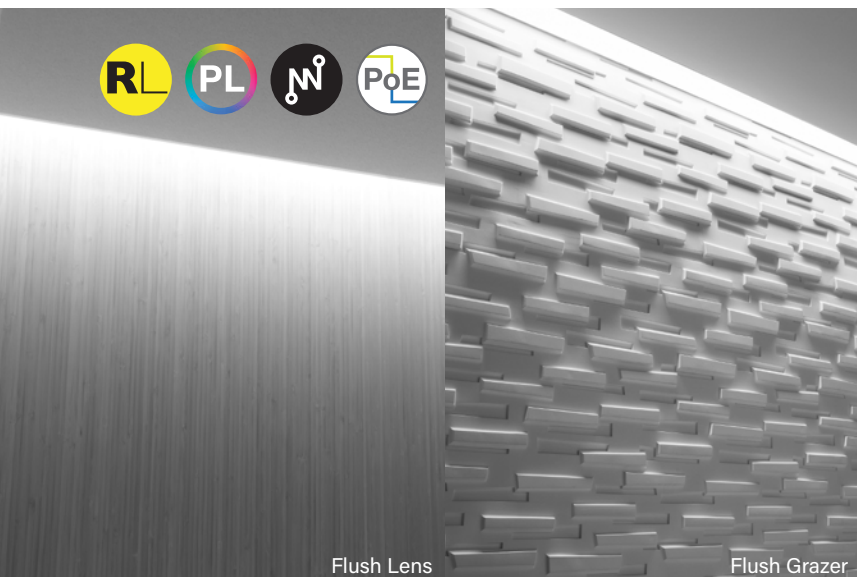


Seem® 4

LED PERIMETER



recessed companion



wall to ceiling companion



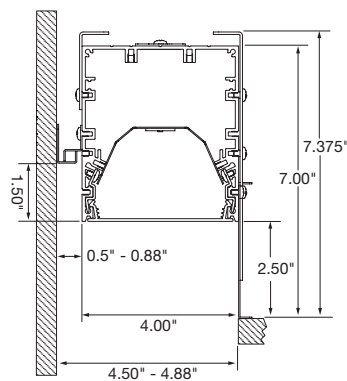
wall mount companion



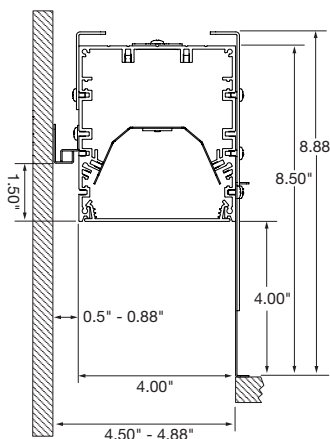
suspended companion

DIMENSIONAL DATA

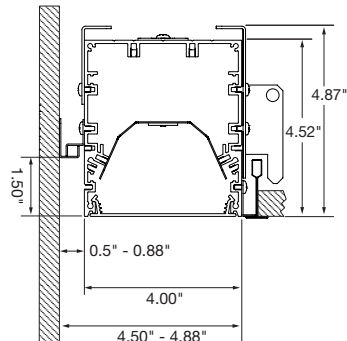
2.5" Regress (FL2/GR2) Drywall/hard ceiling



4.0" Regress (FL4/GR4) Drywall/hard ceiling



Flush (FL0/GR0) Lay-in Grid



Mounting Details

Regress options



Grid
15/16" or 9/16" Flat Tee
main runner required
at edge.



Drywall
Ceiling mounts below
housing (structure by
others).

Flush



Lay-in Grid



Slot Tee/
Tegular



Mud-in
Drywall



Trim
Flange



Luminaire must be installed prior to drywall

FEATURES

Seem 4 perimeter provides a glowing transition between ceiling and wall.

Flush, 2.5" regress or 4.0" regress, available with standard lens or grazer shielding options.

Adjustable housing option provides flexibility with +/- 3 inch adjustability for wall-to-wall illumination.

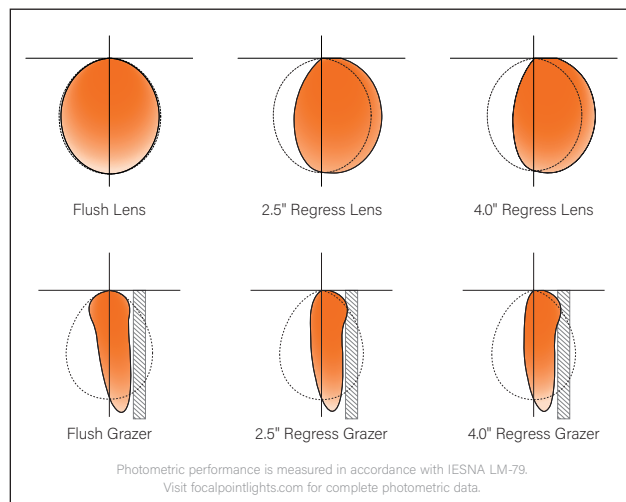
Frosted acrylic lens provides uninterrupted illumination without pixels or shadows.

Preferred Light: Lighting for better color rendition and human preference.

Connected Solutions: Integrates with wired and wireless building lighting control systems.

PoE compatible: Integrates with Power over Ethernet lighting systems via standard, low-voltage wires.

DISTRIBUTIONS

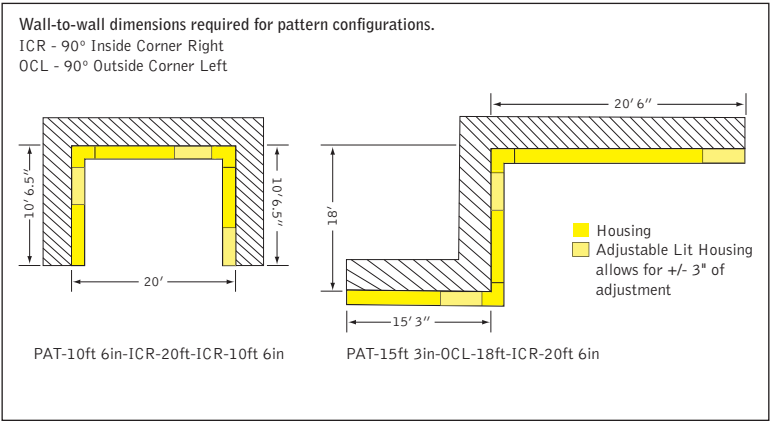


Photometric performance is measured in accordance with IESNA LM-79.
Visit focalpointlights.com for complete photometric data.

fixture:

project:

PATTERN CONFIGURATIONS



SPECIFICATIONS

LED System

Proprietary linear LED module incorporates premium LEDs on a robust platform to achieve excellent thermal management. LEDs are placed to promote a uniform appearance. Available in 2700K, 3000K, 3500K or 4000K with CRI>80 or CRI>90, 3 SDCM. 3500K and 4000K with CRI>90 have a cyanosis observation index (COI) of 3.3 or less. LED modules and drivers are replaceable from below.

Construction

One piece extruded aluminum housing. 20 Ga. steel end caps, bulkheads, sliding sleeve and regress leg. 4' unit weight: 19 lbs.

Optic

Reflectors fabricated of 22 Ga. steel finished in High Reflectance White powder coat. Extruded acrylic lens .085" thick with satin finish, up to 8' continuous.

Electrical

Luminaires are pre-wired with factory installed branch circuit wiring and over-molded quick connects. Standard 120-277V constant current driver includes 0-10V analog dimming. Dimming range 100% to 10%.Power factor >.9. PoE compatible: Integrates with Power over Ethernet lighting systems via standard, low-voltage wires. PoE runs require an independent PoE node and power feed for each luminaire section.

Emergency

Output - 10 watts for 90 minutes. Maximum mounting height: 19.2ft.

Labels

UL and cUL Listed. Suitable for Dry or Damp Locations, indoor use only.

Finish

Polyester powder coat applied over a multi-stage pre-treatment.

Lumen Maintenance

Reported: L70 > 61,000 hours Calculated: L70 at > 480,000 hours
L90 > 61,000 hours L90 at > 128,000 hours
(Derived from EPA T M-21 calculator. Based on typical conditions, consult factory for additional data.)

Reliability

At Focal Point, our products are designed to stand the test of time. Each luminaire is engineered using superior components, manufactured with the utmost care and rigorously tested. Contact us for reliability data.

Warranty

LED system rated for operation in ambient environments up to 25°C. 5-year limited warranty.

4' PERFORMANCE CHART

See page 3.



10 DAY







Options in orange qualify for the Quickship program. Run lengths in 1' increments, 1000' total. Refer to Quickship Guide for complete details.

Focal Point LLC reserves the right to change specifications for product improvement without notification.

ORDERING		FSM4PR
Luminaire Series		
Seem 4 LED Perimeter	FSM4PR	
Housing Type		
Adjustable Lit Housing	ALH	
(Allows for +/- 3" adjustment to overall run length. 3' minimum luminaire length.)		
Fixed Housing	FXH	
Shielding		
Flush Lens	FL0	
(Not available with Unlit Sliding Sleeves - SSB)		
2.5" Regress	FL2	
4.0" Regress	FL4	
Flush Grazer	GR0	
(Not available with Unlit Sliding Sleeves - SSB)		
2.5" Regress Grazer	GR2	
4.0" Regress Grazer	GR4	
Lumen Output		
275 Lumens per foot	275LF	
(Not available with Lutron Drivers.)		
375 Lumens per foot	375LF	
(Not available with LH1.)		
625 Lumens per foot	625LF	
(3' minimum with LH1.)		
875 Lumens per foot	875LF	
1000 Lumens per foot	1000LF	
Color Temperature		
2700K, 80+ CRI or 90+ CRI	27K or 927K	
3000K, 80+ CRI or 90+ CRI	30K or 930K	
3500K, 80+ CRI or 90+ CRI	35K or 935K	
4000K, 80+ CRI or 90+ CRI	40K or 940K	
3500K, Preferred Light	P35K	
(6" increments only. FXH only.)		
Circuits & Zones		
1 Circuit, non-emergency	1C	
Consult Ordering Guide on page 5 for multiple circuiting and zoning options	_C_Z_DL	
Voltage		
120/277 UNV Volt	UNV	
Low Voltage	LV	
Control System & Dimming Level		
0-10V - 10% Dimming	LD1	
0-10V - 1% Dimming	L11	
Low Voltage, PoE compatible	LVN	
(No driver. Not available with EM or EC. LV Voltage only.)		
Lutron Hi-Lume EcoSystem (LDE1) - 1% Dimming	LH1	
DALI - 1% Dimming	D11	
Acuity nLight - 1% Dimming*	NLT1	
(4' minimum length. Not available with CP. Grid only.)		
Enlighted Smart Sensor - 1% Dimming*	ENL1	
(4' minimum length. Grid only.)		
Osram Connected Lighting Module for* ENCELIUM systems - 1% Dimming	CLM1	
(4' minimum length. Grid only. Compatible with Osram ENCELIUM and ENCELIUM EDGE systems only.)		
Osram Connected Lighting Module for* ZigBee Wireless Networks - 1% Dimming	CLMZ1	
(4' minimum length. Grid only. Not compatible with Osram ENCELIUM systems.)		
Wattstopper® DLM - 1% Dimming*	DLM1	
(4' minimum length. Grid only.)		
Mounting		
Lay-in Grid	G	
Flush	ST	
(FL0 & GR0)	TF	
Trim Flange Drywall	XFF	
Mud-in Trimless Drywall		
Regressed	G	
(FL2, FL4, GR2 & GR4)	XF	
Trimless Drywall		
Factory Options		
(See Ordering Guide on page 5 for ordering details for DC, EC, EM & ECD.)		
Chicago Plenum	CP	
Daylight Circuit	_DC	
Emergency Circuit	_EC	
Emergency Battery Pack†	_EM	
Emergency Control Device†	_ECD	
6' New York City Flex Whip (120V only)	FN1	
6' New York City Flex Whip (277V only)	FN2	
6' Flex Whip	FW	
Fixed Housing with Unlit Sliding Sleeves	SSB	
(Set of two unlit 12" sleeves. Fixed housing in straight runs only. FL2, FL4, GR2 & GR4 only. 3' minimum luminaire length.)		
Finish		WH
Matte White Housing	WH	
Luminaire Length		ft in
Specify luminaire/row length in 1" increments	_ft_in	
(2' minimum length)		
Pattern Options		
Specify patterns based on wall-to-wall dimensions	PAT	
(See Pattern Configurations for example)		
Example: FSM4PR-ALH-FL2-625LF-35K-1C-120-LD1-G-WH-PAT-10-ICR-20-ICR-10		

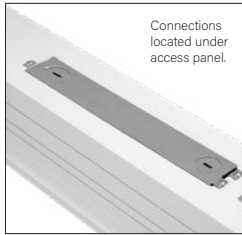
†4' minimum length. 120/277 Volt only. EM or ECD not available at corners.
*7' minimum length with FXH & EM. Not available with ALH & EM.

4' PERFORMANCE CHART

Lumens per Foot	Lumen Output	Tested System Watts	LPW					
			 FL0	 FL2	 FL4	 GR0	 GR2	 GR4
275LF	1100	12	90	83	80	97	91	88
375LF	1500	15	95	89	86	103	97	94
625LF	2500	25	96	90	86	104	98	95
875LF	3500	35	98	91	88	106	100	97
1000LF	4000	37	106	99	95	115	108	105

Based on 3500K, 80 CRI, 4' lengths. Lumen multipliers: Preferred Light = 0.65, 90+ CRI = 0.87.
Lumen output may vary +/- 5%. Actual wattage may vary +/- 5%.

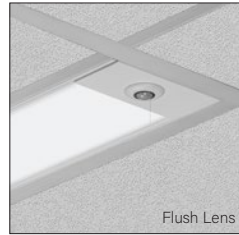
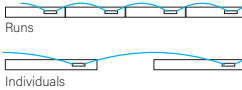
Focal Point provides flexibility in meeting the needs of each project by integrating with several building lighting control systems. A variety of sensors, drivers and other components can be specified that allow the luminaires to communicate with wired and wireless networks. All zoning can be digitally reconfigured through the application software. Daylight harvesting, occupancy sensing, integration with HVAC systems, and individual controls enable the monitoring and modulating of light levels and temperature in order to save energy, reduce costs and maximize occupants' comfort. All Connected Solutions luminaires require a compatible building control system.*



nLight[†] provides a two-way wired digital lighting system allowing for on/off and dimming functionality, occupancy sensing, and multi-zone daylight harvesting.

Acuity nLight - 1% Dimming (NLT1)
Acuity Model #nEPS-60-IO

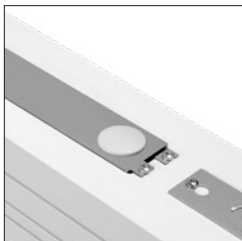
CAT-5 Cable provided by others. Serial labels will be provided on outside of luminaires and control unit.



A Siemens Company

Enlighted smart sensor allows for occupancy sensing, daylight harvesting, energy usage, temperature and light level control. Communicates wirelessly with the Enlighted network.

Enlighted Smart Sensor - 1% Dimming (ENL1)
Enlighted Model #SU-5E-IOT



Connected Lighting Module (CLM) enables each luminaire to be independently controlled and configured. Communicates wirelessly with Daintree Networks[®], Osram ENCELIUM[™], Osram ENCELIUM EDGE[™], and other networks using the ZigBee[®] HA communication protocol to allow for on/off and dimming functionality, occupancy sensing and multi-zone daylight harvesting.

Osram CLM - 1% Dimming (CLM1 & CLMZ1)
Osram Model #ZBHA-CLM DIM

Serial labels will be provided on outside of luminaires and control unit.

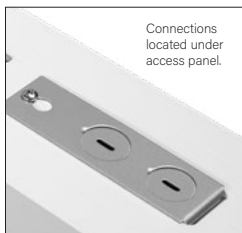


WATTSTOPPER[®]

A Digital Lighting Management (DLM) system that provides two-way wired communication between networked luminaires and control system to allow for on/off and dimming functionality, occupancy sensing and multi-zone daylight harvesting.

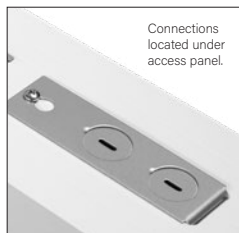
Wattstopper DLM - 1% Dimming (DLM1)
Wattstopper Model #LMFC-011

CAT-5 Cable provided by others. Serial labels will be provided on outside of luminaires and control unit.



A two-way digital network that enables on/off and dimming functionality, occupancy sensing, and multi-zone daylight harvesting working with Quantum[®], Energi Savr Node[™], and Energi TriPak[™] using EcoSystem[®] communication protocol.

Lutron Hi-Lume EcoSystem - 1% Dimming (LH1)
Lutron Model #LDE1



A two-way digital network that enables on/off and dimming functionality, occupancy sensing, and multi-zone daylight harvesting. Communicates with Züm wireless and SpaceBuilder working with Züm hub scheduling or FUSION management.

DALI - 1% Dimming (D11)
0-10V - 1% Dimming (L11)

Note: 0-10V is not a digital network but is compatible with Creston Züm[™] system.

CONNECTED SOLUTIONS DETAILS

Connected Solution	Model #	Protocol	Compatible Networks*	Occupancy	Daylight	Temperature Reporting	Communication to Luminaire	Drivers
Acuity nLight (NLT1)	nEPS-60-IO**	nLight	nLight	Enabled	Enabled	No	Wired	eldoLED ECOdrive , eldoLED SOLOdrive
Crestron (D11, L11)	Specified Driver	DALI 0-10V	Crestron Züm Wireless & SpaceBuilder	Enabled	Enabled	No	Wired	eldoLED ECOdrive (DALI) , Advance by Signify (0-10V)
Enlighted Smart Sensor (ENL1)	SU-5E-IOT**	Enlighted RF	Enlighted	Integrated	Integrated	Yes	Wireless	Advance by Signify , Osram Optotronic
Legrand Wattstopper DLM (DLM1)	LMFC-011**	DLM	DLM	Enabled	Enabled	No	Wired	Advance by Signify , Osram Optotronic
Lutron EcoSystem (LH1)	LDE1**	EcoSystem	Quantum, Energi Savr Node, Energi TriPak	Enabled	Enabled	No	Wired	Lutron Hi-Lume
Osram CLM for ENCELIUM systems (CLM1)	ZBHA-CLM**	ZigBee HA	Osram ENCELIUM & ENCELIUM EDGE	Enabled	Enabled	No	Wireless	Osram Optotronic
Osram CLM for ZigBee Wireless Networks (CLMZ1)	ZBHA-CLM**	ZigBee HA	Daintree Networks & open ZigBee Networks	Enabled	Enabled	No	Wireless	Osram Optotronic

*Not all compatible networks may be listed. **For performance data and additional control system details please visit the connected solutions manufacturer websites. Primary drivers are listed in **bold**. To specify a particular driver please consult factory.

†Controls systems supplied by others.

Ordering Guide

Linear Circuitry, Zones & Factory Options



HOW TO USE THIS GUIDE

Fill out the worksheet on the following page to specify your requirements for circuitry, zones, and factory options.

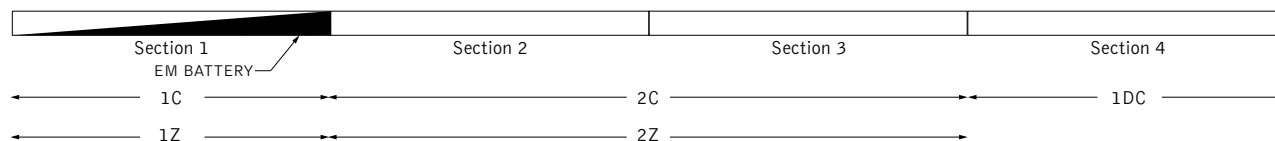
Refer to the run chart for standard run configurations, consult factory for custom configurations.

Complete the Totals / Ordering Codes at the bottom of the worksheet and add to your ordering logic on the cut sheet.

Submit the worksheet along with your order.

EXAMPLE	TOTAL RUN LENGTH: <u>32ft</u>		JOB NAME: _____			FIXTURE TYPE: _____			
	HOUSING SECTION	SECTION LENGTH	SHARED ELECTRICAL FEED, NORMAL POWER			FACTORY OPTIONS			
						SEPARATE ELECTRICAL FEEDS			EM
			SWITCHING CIRCUIT	DIMMING ZONE	DAYLIGHT ZONE	DAYLIGHT CIRCUIT	EMERGENCY CIRCUIT	ECD	
	1	8	1C	1Z					1EM
	2	8	2C	2Z					
	3	8	2C	2Z					
	4	8				1DC			
	Totals / Ordering Codes		2C	2Z		1DC			1EM

ORDERING: FSM4L-FL-625LF-35K- **2C2Z** -UNV-LD1-G2- **1DC-1EM** -WH-32ft



KEY

C = Switching Circuit
Switched Hot / Shared Neutral

Z = Dimming Zone
Dimming Control Wires

DL = Daylight Zone
Daylight Dimming Control Wires

DC = Daylight Circuit
Switched Hot / Separate Neutral

EC = Emergency Circuit
Switched Hot / Separate Neutral

EM = Emergency Battery
Unswitched Hot / Shared Neutral

ECD = Emergency Control Device
Unswitched Hot / Separate Neutral

DEFAULTS

- Zones and Factory Options illuminate entire sections from 4' to 8' in length.
- One shared or isolated circuit and zone required per housing section.
- Limit of one EM or ECD per housing section.
- Additional electrical feed required for applications greater than three shared circuits and zones.
- Each DC, EC and ECD require an additional electrical feed.
- ECD not available in the same housing section as EC.
- Longer lead times and additional pricing may apply for custom run configurations.

CUSTOM LENGTHS

- If partial illumination of emergency or daylight section is required, indicate in ordering guide and add "partial illumination" in Order Notes. Drawing required.
- Engineering validation required, longer lead times may apply.

Ordering Guide Worksheet

Linear Circuitry, Zones & Factory Options



FOCAL POINT®

TOTAL RUN LENGTH: _____		JOB NAME: _____			FIXTURE TYPE: _____			
HOUSING SECTION	SECTION LENGTH	SHARED ELECTRICAL FEED, NORMAL POWER			FACTORY OPTIONS			EM
		SWITCHING CIRCUIT	DIMMING ZONE	DAYLIGHT ZONE	DAYLIGHT CIRCUIT	EMERGENCY CIRCUIT	ECD	
1								
2								
3								
4								
5								
6								
7								
8								
9								
10								
11								
12								
13								
14								
15								
16								
17								
18								
19								
20								
Totals / Ordering Codes								

WORKSHEET

Combine to create Circuits & Zones ordering code

Enter as individual Factory Options

RUN CHART

Run length (ft)	Housing Configuration Section Lengths	Run length (ft)	Housing Configuration Section Lengths	Run length (ft)	Housing Configuration Section Lengths	Run length (ft)	Housing Configuration Section Lengths
9	5 + 4	21	8 + 8 + 5	33	8 + 8 + 8 + 5 + 4	45	8 + 8 + 8 + 8 + 8 + 5
10	6 + 4	22	8 + 8 + 6	34	8 + 8 + 8 + 6 + 4	46	8 + 8 + 8 + 8 + 8 + 6
11	7 + 4	23	8 + 8 + 7	35	8 + 8 + 8 + 7 + 4	47	8 + 8 + 8 + 8 + 8 + 7
12	8 + 4	24	8 + 8 + 8	36	8 + 8 + 8 + 8 + 4	48	8 + 8 + 8 + 8 + 8 + 8
13	8 + 5	25	8 + 8 + 5 + 4	37	8 + 8 + 8 + 8 + 5		
14	8 + 6	26	8 + 8 + 6 + 4	38	8 + 8 + 8 + 8 + 6		
15	8 + 7	27	8 + 8 + 7 + 4	39	8 + 8 + 8 + 8 + 7		
16	8 + 8	28	8 + 8 + 8 + 4	40	8 + 8 + 8 + 8 + 8		
17	8 + 5 + 4	29	8 + 8 + 8 + 5	41	8 + 8 + 8 + 8 + 5 + 4		
18	8 + 6 + 4	30	8 + 8 + 8 + 6	42	8 + 8 + 8 + 8 + 6 + 4		
19	8 + 7 + 4	31	8 + 8 + 8 + 7	43	8 + 8 + 8 + 8 + 7 + 4		
20	8 + 8 + 4	32	8 + 8 + 8 + 8	44	8 + 8 + 8 + 8 + 8 + 4		

Standard run configurations, consult factory for custom configurations.