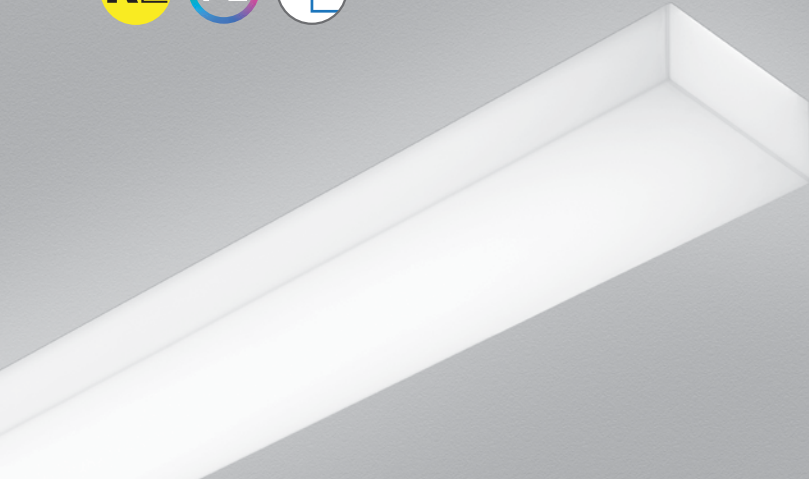


# Seem® 4 Drywall/Hard Ceiling

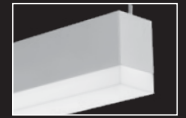
LED WITH POP-DOWN LENS



0.5" pop-down



pop-down grid companion



suspended pop-down lens companion



flush lens companion



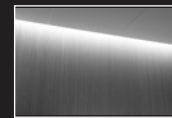
regress lens companion



wall to ceiling companion



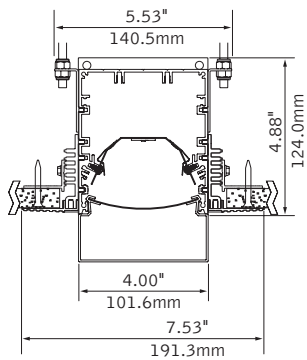
suspended & wall companion



perimeter companion

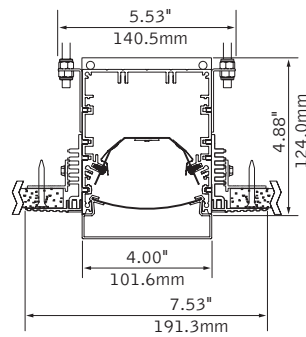
## DIMENSIONAL DATA

### 1.5" Pop-Down - trimless mud-in



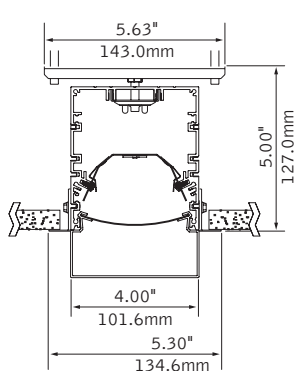
note: 0.375"min - 2.125"max ceiling thickness

### 0.5" Pop-Down - trimless mud-in

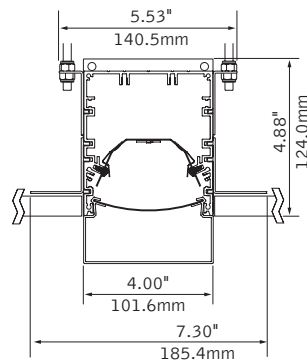


note: 0.375"min - 2.125"max ceiling thickness

### 1.5" Pop-Down - trim flange



### 1.5" Pop-Down - hard surface



note: 0.375"min - 2.125"max ceiling thickness

## FEATURES

4" aperture recessed LED slot with 0.5" or 1.5" Pop-Down lens integrates with drywall or hard ceilings in a variety of mounting styles for a clean, unobtrusive aesthetic.

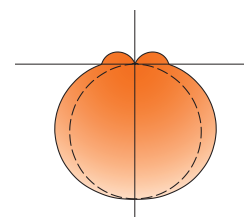
Dimensional frosted acrylic lens provides uninterrupted illumination, without pixels or shadows.

LED position and lens material optimized to provide the perfect blend of high performance and visual comfort.

Preferred Light: Lighting for better color rendition and human preference.

PoE compatible: Integrates with Power over Ethernet lighting systems via standard, low-voltage wires.

## PERFORMANCE



4' - 1.5" Pop-Down Lens  
Nominal output:  
750 Lumens per foot

**Delivered Lumens: 3000lm**

**Total System Watts: 36W**

### PRODUCT OVERVIEW

Lumen Output:	1125-3000lm
Wattage:	13-36W
LPW:	79-86
SDCM:	3

Photometric performance is measured in accordance with IESNA LM-79.  
Visit [focalpointlights.com](http://focalpointlights.com) for complete photometric data.

SPECIFICATIONS

LED System

Proprietary linear LED module incorporates premium LEDs on a robust platform to achieve excellent thermal management. LEDs are placed to promote a uniform appearance. Available in 2700K, 3000K, 3500K or 4000K with CRI>80 or CRI>90, 3 SDCM. 3500K and 4000K with CRI>90 have a cyanosis observation index (COI) of 3.3 or less. LED modules and drivers are replaceable from below.

Construction

One piece extruded aluminum housing. 20 Ga. steel end caps. Housing for new construction applications. XFW acceptable for use with wood, consult factory for Type IC availability. 2' unit weight: 18 lbs., 3' unit weight: 24 lbs., 4' unit weight: 30 lbs., 5' unit weight: 36 lbs.

Optic

Reflectors fabricated of 22 Ga. steel finished in High Reflectance White powder coat. Extruded acrylic lens .06" thick with frosted finish, up to 8' continuous.

Electrical

Luminaires are pre-wired with factory installed branch circuit wiring and over-molded quick connects. Standard 120-277V constant current driver includes 0-10V analog dimming. Power factor >.9. PoE compatible: Integrates with Power over Ethernet lighting systems via standard, low-voltage wires. PoE runs require an independent PoE node and power feed for each luminaire section.

Emergency Battery

Emergency output - 10 watts for 90 minutes.

Labels

UL and cUL listed. Suitable for Dry or Damp Locations, indoor use only.

Finish

Polyester powder coat applied over a multi-stage pre-treatment.

Lumen Maintenance

Reported:

L70 > 61,000 hours

Calculated: L70 at > 480,000 hours

L90 > 61,000 hours

L90 at > 128,000 hours

(Derived from EPA TM-21 calculator. Based on typical conditions, consult factory for additional data.)

Reliability

At Focal Point, our products are designed to stand the test of time. Each luminaire is engineered using superior components, manufactured with the utmost care and rigorously tested. Contact us for reliability data.

Warranty

LED system rated for operation in ambient environments up to 25°C. 5-year limited warranty.

4' PERFORMANCE CHART

Shielding	Lumens per Foot	Delivered Lumens	Tested System Watts	LPW
0.5" Pop-Down Lens	275LF	1125	14	80
	375LF	1520	19	86
	625LF	2524	32	79
	750LF	2904	36	81
1.5" Pop-Down Lens	275LF	1129	13	85
	375LF	1525	18	86
	625LF	2546	30	84
	750LF	3000	36	82

Based on 3500K, 80 CRI, 4' lengths. Lumen multipliers: Preferred Light = 0.65, 90+ CRI = 0.87. Lumen output may vary +/- 5%. Actual wattage may vary +/- 5%.

ORDERING

Luminaire Series	FSM4L
Seem 4 LED	FSM4L
Shielding	
0.5" Pop-Down Lens	PD05
1.5" Pop-Down Lens (2' - 8' individual units only)	PD15
Lumen Output	
275 Lumens per foot (Not available with Lutron Drivers.)	275LF
375 Lumens per foot (Not available with LH1.)	375LF
625 Lumens per foot (3' minimum with LH1.)	625LF
750 Lumens per foot	750LF
Color Temperature	
2700K, 80+ CRI or 90+ CRI	27K or 927K
3000K, 80+ CRI or 90+ CRI	30K or 930K
3500K, 80+ CRI or 90+ CRI	35K or 935K
4000K, 80+ CRI or 90+ CRI	40K or 940K
3500K, Preferred Light	P35K
Circuits & Zones	
1 Circuit, non-emergency	1C
Consult Ordering Guide on page 3 for multiple circuiting and zoning options	_C_Z_DL
Voltage	
120/277 UNV Volt	UNV
Low Voltage	LV
Control System & Dimming Level	
0-10V - 10% Dimming	LD1
0-10V - 1% Dimming	L11
Low Voltage, PoE compatible (No driver. Not available with EM or EC. LV Voltage only.)	LVN
Lutron Hi-Lume EcoSystem (LDE1) - 1% Dimming	LH1
DALI 1% Dimming	D11
Ceiling Configuration	
Trim Flange Drywall (3' minimum with Lutron Drivers)	TF
Trim Flange Wood (3' minimum with Lutron Drivers)	TFW
Mud-in Trimless, pre-set for 1/2" Drywall	XF1
Mud-in Trimless, pre-set for 5/8" Drywall	XF2
Mud-in Trimless, set thickness in field (Mounting equipment assembled in field)	XFF
Non-Drywall Hard Surface	XFN
Hard Surface, Wood	XFW
Factory Options (See Ordering Guide on page 3 for ordering details for DC, EC, EM & ECD.)	
Chicago Plenum (Not available with Flex Whip)	CP
Daylight Circuit	_DC
Emergency Circuit	_EC
Emergency Battery Pack†	_EM
Emergency Control Device† †(4' minimum. 120/277 Volt only.)	_ECD
6' New York City Flex Whip (120V)	FN1
6' New York City Flex Whip (277V)	FN2
6' Flex Whip	FW
Finish	WH
Matte White Housing	WH
Luminaire Length	
Specify luminaire/row length in 1' increments (2' minimum. 1.5" Pop-Down lens available in 2' - 8' individual units only. Smaller increments available. Consult factory for details.)	X'



10 DAY

Options in orange qualify for the Quickship program. Run lengths in 1' increments, 1000' total. Refer to Quickship Guide for complete details including EM/EC options.

# Ordering Guide

Linear Circuitry, Zones & Factory Options



## HOW TO USE THIS GUIDE

Fill out the worksheet on the following page to specify your requirements for circuitry, zones, and factory options.

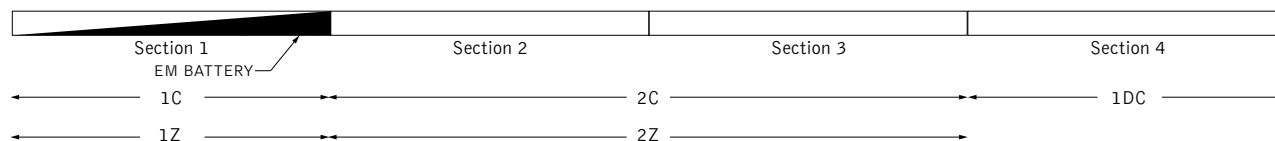
Refer to the run chart for standard run configurations, consult factory for custom configurations.

Complete the Totals / Ordering Codes at the bottom of the worksheet and add to your ordering logic on the cut sheet.

Submit the worksheet along with your order.

EXAMPLE	TOTAL RUN LENGTH: 32ft		JOB NAME:			FIXTURE TYPE:			
	HOUSING SECTION	SECTION LENGTH	SHARED ELECTRICAL FEED, NORMAL POWER			FACTORY OPTIONS			
						SEPARATE ELECTRICAL FEEDS			EM
			SWITCHING CIRCUIT	DIMMING ZONE	DAYLIGHT ZONE	DAYLIGHT CIRCUIT	EMERGENCY CIRCUIT	ECD	
	1	8	1C	1Z					1EM
	2	8	2C	2Z					
	3	8	2C	2Z					
	4	8				1DC			
	Totals / Ordering Codes		2C	2Z		1DC			1EM

ORDERING: FSM4L-FL-625LF-35K- 2C2Z -UNV-LD1-G2- 1DC-1EM -WH-32ft



## KEY

**C = Switching Circuit**  
Switched Hot / Shared Neutral

**Z = Dimming Zone**  
Dimming Control Wires

**DL = Daylight Zone**  
Daylight Dimming Control Wires

**DC = Daylight Circuit**  
Switched Hot / Separate Neutral

**EC = Emergency Circuit**  
Switched Hot / Separate Neutral

**EM = Emergency Battery**  
Unswitched Hot / Shared Neutral

**ECD = Emergency Control Device**  
Unswitched Hot / Separate Neutral

## DEFAULTS

- Zones and Factory Options illuminate entire sections from 4' to 8' in length.
- One shared or isolated circuit and zone required per housing section.
- Limit of one EM or ECD per housing section.
- Additional electrical feed required for applications greater than three shared circuits and zones.
- Each DC, EC and ECD require an additional electrical feed.
- ECD not available in the same housing section as EC.
- Longer lead times and additional pricing may apply for custom run configurations.

## CUSTOM LENGTHS

- If partial illumination of emergency or daylight section is required, indicate in ordering guide and add "partial illumination" in Order Notes. Drawing required.
- Engineering validation required, longer lead times may apply.

# Ordering Guide Worksheet

Linear Circuitry, Zones & Factory Options



TOTAL RUN LENGTH: _____		JOB NAME: _____			FIXTURE TYPE: _____			
HOUSING SECTION	SECTION LENGTH	SHARED ELECTRICAL FEED, NORMAL POWER			FACTORY OPTIONS			EM
		SWITCHING CIRCUIT	DIMMING ZONE	DAYLIGHT ZONE	DAYLIGHT CIRCUIT	EMERGENCY CIRCUIT	ECD	
1								
2								
3								
4								
5								
6								
7								
8								
9								
10								
11								
12								
13								
14								
15								
16								
17								
18								
19								
20								
Totals / Ordering Codes								

Combine to create Circuits & Zones ordering code

Enter as individual Factory Options

## RUN CHART

Run length (ft)	Housing Configuration Section Lengths	Run length (ft)	Housing Configuration Section Lengths	Run length (ft)	Housing Configuration Section Lengths	Run length (ft)	Housing Configuration Section Lengths
9	5 + 4	21	8 + 8 + 5	33	8 + 8 + 8 + 5 + 4	45	8 + 8 + 8 + 8 + 8 + 5
10	6 + 4	22	8 + 8 + 6	34	8 + 8 + 8 + 6 + 4	46	8 + 8 + 8 + 8 + 8 + 6
11	7 + 4	23	8 + 8 + 7	35	8 + 8 + 8 + 7 + 4	47	8 + 8 + 8 + 8 + 8 + 7
12	8 + 4	24	8 + 8 + 8	36	8 + 8 + 8 + 8 + 4	48	8 + 8 + 8 + 8 + 8 + 8
13	8 + 5	25	8 + 8 + 5 + 4	37	8 + 8 + 8 + 8 + 5		
14	8 + 6	26	8 + 8 + 6 + 4	38	8 + 8 + 8 + 8 + 6		
15	8 + 7	27	8 + 8 + 7 + 4	39	8 + 8 + 8 + 8 + 7		
16	8 + 8	28	8 + 8 + 8 + 4	40	8 + 8 + 8 + 8 + 8		
17	8 + 5 + 4	29	8 + 8 + 8 + 5	41	8 + 8 + 8 + 8 + 5 + 4		
18	8 + 6 + 4	30	8 + 8 + 8 + 6	42	8 + 8 + 8 + 8 + 6 + 4		
19	8 + 7 + 4	31	8 + 8 + 8 + 7	43	8 + 8 + 8 + 8 + 7 + 4		
20	8 + 8 + 4	32	8 + 8 + 8 + 8	44	8 + 8 + 8 + 8 + 8 + 4		

Standard run configurations, consult factory for custom configurations.