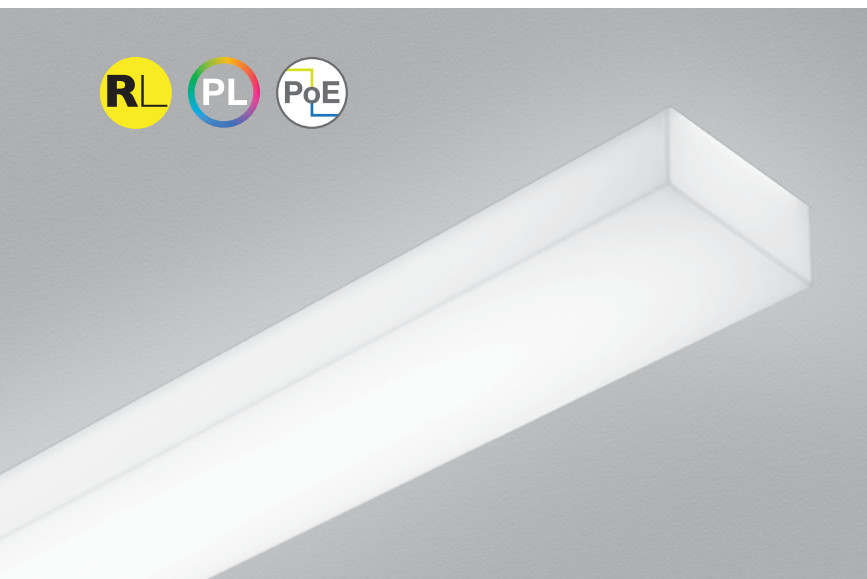


# Seem® 4 Drywall/Hard Ceiling

LED WITH POP-DOWN LENS



0.5" pop-down



pop-down grid companion



suspended pop-down lens companion



flush lens companion



regress lens companion



wall to ceiling companion



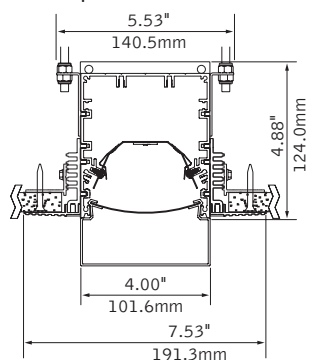
suspended & wall companion



perimeter companion

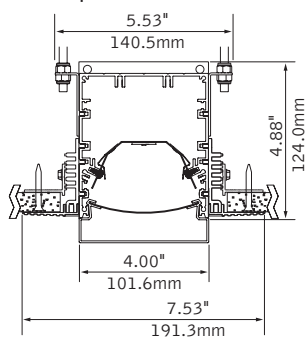
## DIMENSIONAL DATA

### 1.5" Pop-Down - trimless mud-in



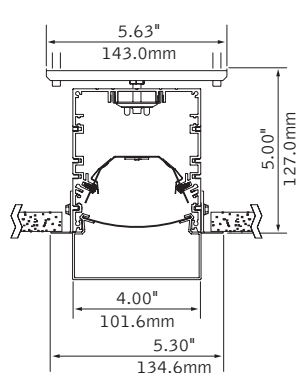
note: 0.375"min - 2.125"max ceiling thickness

### 0.5" Pop-Down - trimless mud-in

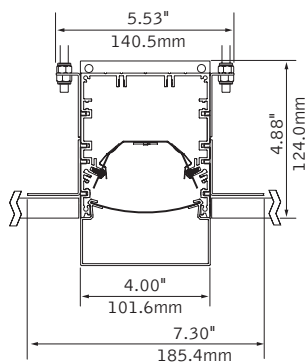


note: 0.375"min - 2.125"max ceiling thickness

### 1.5" Pop-Down - trim flange



### 1.5" Pop-Down - hard surface



note: 0.375"min - 2.125"max ceiling thickness

## FEATURES

4" aperture recessed LED slot with 0.5" or 1.5" Pop-Down lens integrates with drywall or hard ceilings in a variety of mounting styles for a clean, unobtrusive aesthetic.

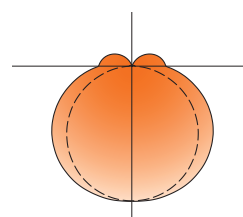
Dimensional frosted acrylic lens provides uninterrupted illumination, without pixels or shadows.

LED position and lens material optimized to provide the perfect blend of high performance and visual comfort.

Preferred Light: Lighting for better color rendition and human preference.

PoE compatible: Integrates with Power over Ethernet lighting systems via standard, low-voltage wires.

## PERFORMANCE



4" - 1.5" Pop-Down Lens

Nominal output:  
750 Lumens per foot

**Delivered Lumens: 3000lm**

**Total System Watts: 36W**

### PRODUCT OVERVIEW

Lumen Output:	1125-3000lm
Wattage:	13-36W
LPW:	79-86
SDCM:	3

Photometric performance is measured in accordance with IESNA LM-79.  
Visit [focalpointlights.com](http://focalpointlights.com) for complete photometric data.

SPECIFICATIONS

LED System

Proprietary linear LED module incorporates premium LEDs on a robust platform to achieve excellent thermal management. LEDs are placed to promote a uniform appearance. Available in 2700K, 3000K, 3500K or 4000K with CRI>80 or CRI>90, 3SDCM. 3500K and 4000K with CRI>90 have a cyanosis observation index (COI) of 3.3 or less. LED modules and drivers are replaceable from below.

Construction

One piece extruded aluminum housing. 20 Ga. steel end caps. Housing for new construction applications. XFW acceptable for use with wood, consult factory for Type IC availability. 2' unit weight: 18 lbs., 3' unit weight: 24 lbs., 4' unit weight: 30 lbs., 5' unit weight: 36 lbs.

Optic

Reflectors fabricated of 22 Ga. steel finished in High Reflectance White powder coat. Extruded acrylic lens .06" thick with frosted finish, up to 8' continuous.

Electrical

Luminaires are pre-wired with factory installed branch circuit wiring and over-molded quick connects. Standard 120-277V constant current driver includes 0-10V analog dimming. Power factor >.9. PoE compatible: Integrates with Power over Ethernet lighting systems via standard, low-voltage wires. PoE runs require an independent PoE node and power feed for each luminaire section.

Emergency Battery

Emergency output - 10 watts for 90 minutes.

Labels

UL and cUL listed. Suitable for Dry or Damp Locations, indoor use only.

Finish

Polyester powder coat applied over a multi-stage pre-treatment.

Lumen Maintenance

Reported: L70 > 61,000 hours

Calculated: L70 at > 480,000 hours

L90 > 61,000 hours

L90 at > 128,000 hours

(Derived from EPA TM-21 calculator. Based on typical conditions, consult factory for additional data.)

Reliability

At Focal Point, our products are designed to stand the test of time. Each luminaire is engineered using superior components, manufactured with the utmost care and rigorously tested. Contact us for reliability data.

Warranty

LED system rated for operation in ambient environments up to 25°C. 5-year limited warranty.

4' PERFORMANCE CHART

Shielding	Lumens per Foot	Delivered Lumens	Tested System Watts	LPW
0.5" Pop-Down Lens	275LF	1125	14	80
	375LF	1520	19	86
	625LF	2524	32	79
	750LF	2904	36	81
1.5" Pop-Down Lens	275LF	1129	13	85
	375LF	1525	18	86
	625LF	2546	30	84
	750LF	3000	36	82

Based on 3500K, 80 CRI, 4' lengths. Lumen multipliers: Preferred Light = 0.65, 90+ CRI = 0.87. Lumen output may vary +/- 5%. Actual wattage may vary +/- 5%.

ORDERING

Luminaire Series	FSM4L	FSM4L
Seem 4 LED	FSM4L	
Shielding		
0.5" Pop-Down Lens	PD05	
1.5" Pop-Down Lens (2' - 8' individual units only)	PD15	
Lumen Output		
275 Lumens per foot (Not available with Lutron Drivers.)	275LF	
375 Lumens per foot (Not available with LU5 & LH1 Drivers)	375LF	
625 Lumens per foot (3' minimum with LU5 & LH1 Drivers.)	625LF	
750 Lumens per foot	750LF	
Color Temperature		
2700K, 80+ CRI or 90+ CRI	27K or 927K	
3000K, 80+ CRI or 90+ CRI	30K or 930K	
3500K, 80+ CRI or 90+ CRI	35K or 935K	
4000K, 80+ CRI or 90+ CRI	40K or 940K	
3500K, Preferred Light	P35K	
Circuit		1C
Single Circuit	1C	
Voltage		
120/277 UNV Volt	UNV	
Low Voltage	LV	
Control System & Dimming Level		
0-10V - 10% Dimming	LD1	
0-10V - 1% Dimming	L11	
Low Voltage, PoE compatible (No driver. Not available with EM or EC. LV Voltage only.)	LVN	
Lutron Hi-Lume EcoSystem (LDE1) - 1% Dimming	LH1	
Lutron 5-Series EcoSystem (LDE5) - 5% Dimming	LU5	
DALI 1% Dimming	D11	
Ceiling Configuration		
Trim Flange Drywall (3' minimum with Lutron Drivers)	TF	
Trim Flange Wood (3' minimum with Lutron Drivers)	TFW	
Mud-in Trimless, pre-set for 1/2" Drywall	XF1	
Mud-in Trimless, pre-set for 5/8" Drywall	XF2	
Mud-in Trimless, set thickness in field (Mounting equipment assembled in field)	XFF	
Non-Drywall Hard Surface	XFN	
Hard Surface, Wood	XFW	
Factory Options		
Chicago Plenum	CP	
Emergency Circuit	EC	
Emergency Battery Pack (4' lengths or longer, not available at corners)	EM	
6' New York City Flex Whip (120V)	FNY1	
6' New York City Flex Whip (277V)	FNY2	
6' Flex Whip	FW	
Finish		WH
Matte White Housing	WH	
Luminaire Length		
Specify luminaire/row length in 1' increments (2' minimum. 1.5' Pop-Down lens available in 2' - 8' individual units only. Smaller increments available. Consult factory for details.)	X'	



10 DAY

Options in orange qualify for the Quickship program. Run lengths in 1' increments, 1000' total. Refer to Quickship Guide for complete details including EM/EC options.