

Seem® 4

LED WALL TO CEILING CORNER



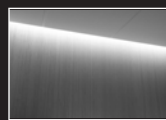
recessed
companion



wall mount
companion



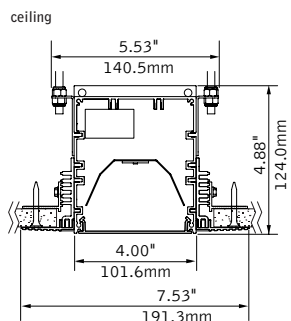
suspended
companion



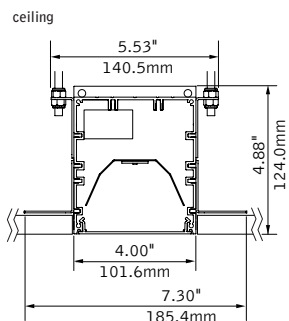
perimeter
companion

DIMENSIONAL DATA

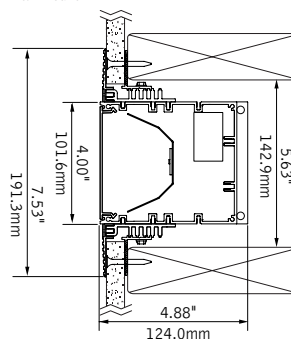
trimless mud-in



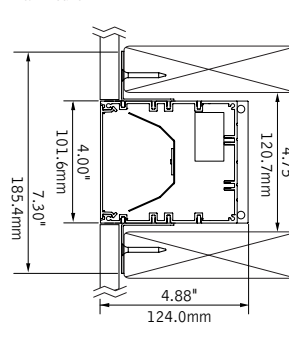
hard surface



wall mount



wall mount



notes: designed for 2"x6" construction
0.375"min - 2.125"max material thickness

FEATURES

Narrow extruded aluminum 4" aperture recessed slot LED that transitions from wall to ceiling.

Clean and minimal trimless drywall mounting.

Frosted acrylic lens provides uninterrupted illumination, without pixels or shadows.

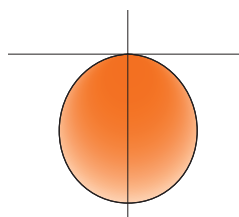
LED position and lens material optimized to provide the perfect blend of high performance and visual comfort.

Choice of output levels to meet a wide variety of application needs.

PERFORMANCE

PRODUCT OVERVIEW

Lumen Output:	1100-5000lm
Wattage:	10-49W
LPW:	100-108
SDCM:	3



4' Flush Lens
Nominal output:
375 Lumens per foot

Delivered Lumens: 1500lm

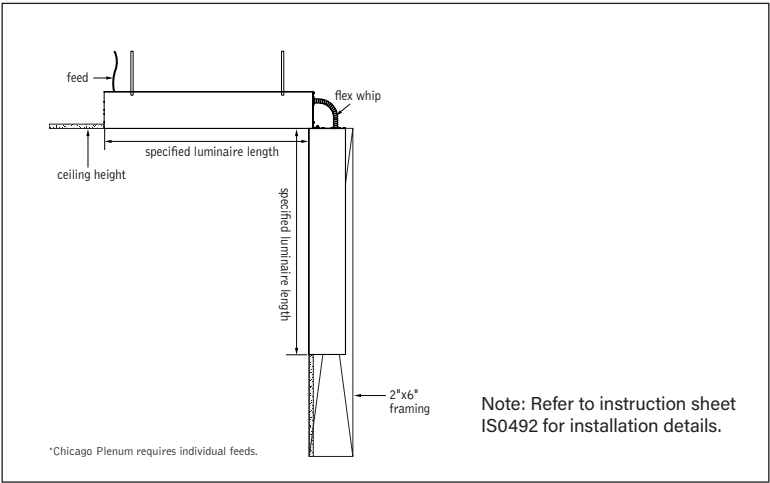
Total System Watts: 13W

Photometric performance is measured in accordance with IESNA LM-79.
Visit focalpointlights.com for complete photometric data.

fixture:

project:

DETAILS



SPECIFICATIONS

LED System

Proprietary linear LED module incorporates premium LEDs on a robust platform to achieve excellent thermal management. LEDs are placed to promote a uniform appearance. Available in 2700K, 3000K, 3500K or 4000K with CRI>80 or CRI>90, 3 SDCM. LED modules and drivers are replaceable from below.

Construction

One piece extruded aluminum housing. 20 Ga. steel end caps. Housing for new construction applications. XFW acceptable for use with wood, consult factory for Type 1C availability. 2' unit weight: 18 lbs., 3' unit weight: 24 lbs., 4' unit weight: 30 lbs., 5' unit weight: 36 lbs.

Optic

Reflectors fabricated of 22 Ga. steel finished in High Reflectance White powder coat. Extruded acrylic lens .085" thick with satin finish, up to 8' continuous.

Electrical

Luminaires are pre-wired with factory installed branch circuit wiring and over-molded quick connects. Standard 120-277V constant current driver includes 0-10V analog dimming. Dimming range 100% to 10%.Power factor > .9.

Emergency

Output - 10 watts for 90 minutes. Maximum mounting height: 19.2ft. See EM/EC Guide for default locations and ordering details.

Labels

UL and cUL listed. Suitable for Dry or Damp Locations, indoor use only.

Finish

Polyester powder coat applied over a multi-stage pre-treatment.

Lumen Maintenance

Reported: L70 > 61,000 hours Calculated: L70 at > 480,000 hours
L90 > 61,000 hours L90 at > 128,000 hours
(Derived from EPA TM-21 calculator. Based on typical conditions, consult factory for additional data.)

Reliability

At Focal Point, our products are designed to stand the test of time. Each luminaire is engineered using superior components, manufactured with the utmost care and rigorously tested. Contact us for reliability data.

Warranty

LED system rated for operation in ambient environments up to 25°C. 5-year limited warranty.

4' PERFORMANCE CHART

Shielding	Lumens per Foot	Delivered Lumens	Tested System Watts	LPW
Flush Lens	275LF	1100	10	100
	375LF	1500	13	108
	625LF	2500	22	107
	875LF	3500	32	105
	1000LF	4000	37	104
	1125LF	4500	44	104
	1250LF	5000	49	102

Based on 3500K, 80 CRI, 4' lengths. Lumen multiplier: 90+ CRI = 0.87. Lumen output may vary +/- 5%. Actual wattage may vary +/- 5%

Focal Point LLC reserves the right to change specifications for product improvement without notification.

ORDERING

Luminaire Series	FSM4L	FSM4L
Seem 4 LED	FSM4L	
Shielding		FL
Flush Satin Lens	FL	
Lumen Output		
275 Lumens per foot (Not available with Lutron Drivers)	275LF	
375 Lumens per foot (Not available with LH1.)	375LF	
625 Lumens per foot (3' minimum with LH1.)	625LF	
875 Lumens per foot	875LF	
1000 Lumens per foot	1000LF	
1125 Lumens per foot	1125LF	
1250 Lumens per foot	1250LF	
Color Temperature		
2700K, 80+ CRI or 90+ CRI	27K or 927K	
3000K, 80+ CRI or 90+ CRI	30K or 930K	
3500K, 80+ CRI or 90+ CRI	35K or 935K	
4000K, 80+ CRI or 90+ CRI	40K or 940K	
Circuit		1C
Single Circuit	1C	
Voltage		UNV
UNV 120/277 Volt	UNV	
Control System & Dimming Level		
0-10V - 10% Dimming	LD1	
0-10V - 1% Dimming	L11	
Lutron Hi-Lume EcoSystem (LDE1)		
- 1% Dimming	LH1	
DALI - 1% Dimming (1000LF max.)	D11	
Mounting		
Wall to Ceiling Corner,	CXF1	
pre-set for 1/2" Drywall		
Wall to Ceiling Corner,	CXF2	
pre-set for 5/8" Drywall		
Wall to Ceiling Corner,	CXFF	
set drywall thickness in field (Mounting equipment assembled in field)		
Wall to Ceiling Corner,	CXFN	
non-drywall hard surface		
Wall to Ceiling Corner, wood	CXFW	
Factory Options		
Chicago Plenum	CP	
Emergency Circuit	_EC	
Emergency Battery Pack	_EM	
(4' minimum. See EM/EC Guide for default locations and ordering details.)		
6' New York City Flex Whip (120V)	FNY1	
6' New York City Flex Whip (277V)	FNY2	
6' Flex Whip	FW	
Finish		WH
Matte White Housing	WH	
Luminaire Length (Lengths are nominal)		
Specify luminaire/row length in 1' increments	X'CX'W	
Example: 12C6W= 12' in ceiling, 6' in wall		