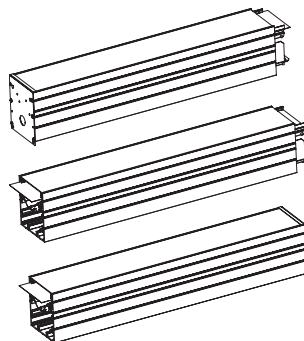
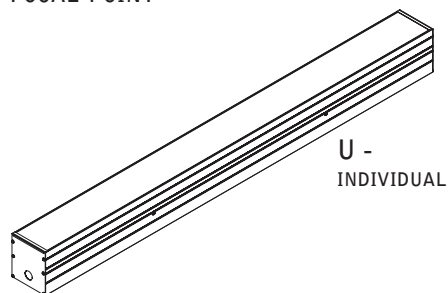


# seem 4 led wet location



FOCAL POINT



S -  
START OF RUN

I -  
INTERMEDIATE

E -  
END OF RUN

KEY



POWER OFF



POWER ON

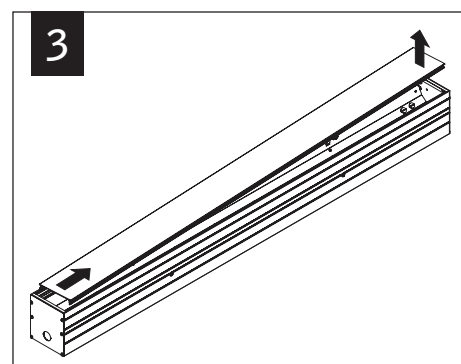
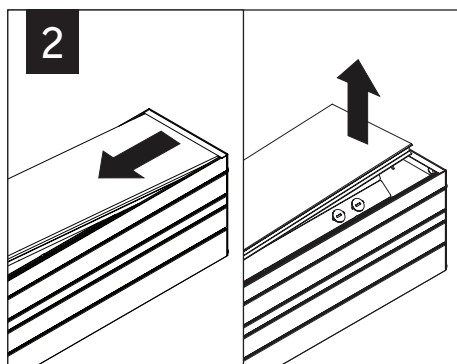
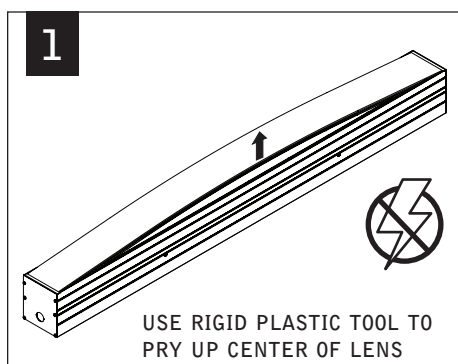


ATTENTION

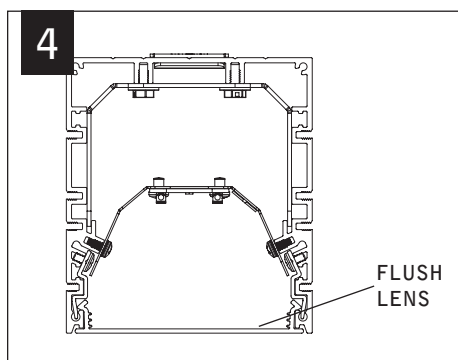
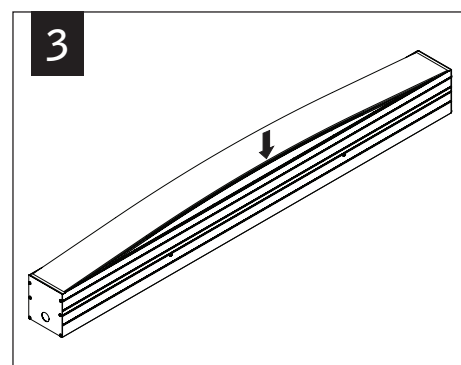
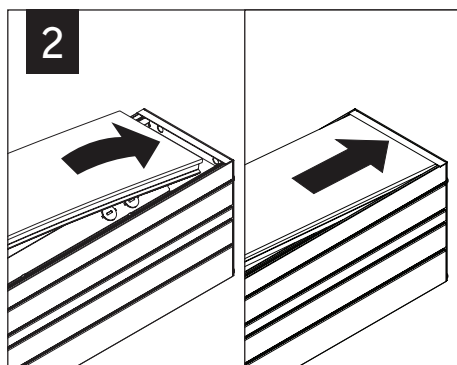
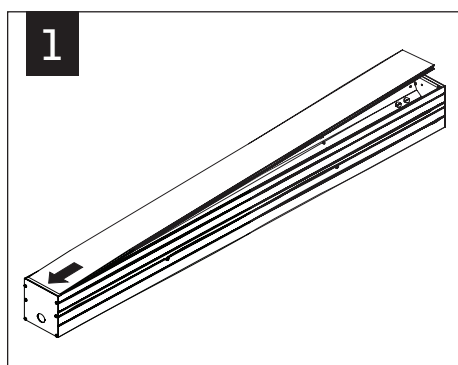


SEE ADDITIONAL  
INSTRUCTIONS

## INDIVIDUAL UNITS - LENS REMOVAL



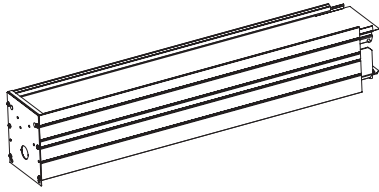
## INDIVIDUAL UNITS - LENS INSTALLATION



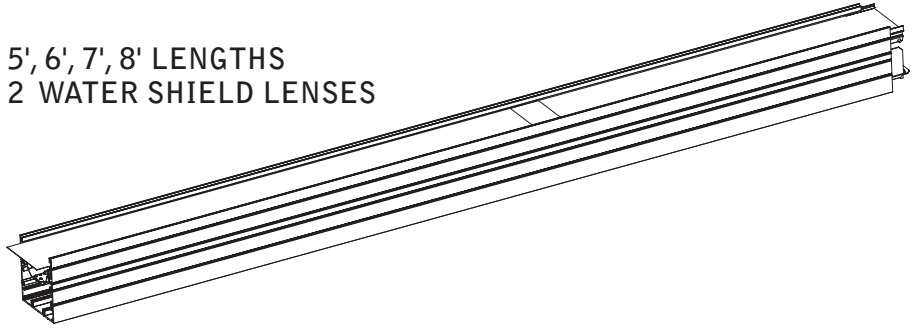
Luminaires must be installed by a qualified electrician (check with local and national codes for proper installation).  
To prevent electrical shock, disconnect electrical supply before installation or servicing.

## JOINED UNITS

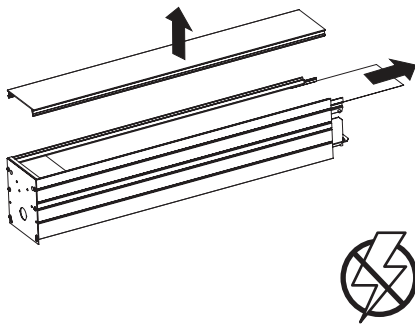
2', 3', 4' LENGTHS  
1 WATER SHIELD LENS



5', 6', 7', 8' LENGTHS  
2 WATER SHIELD LENSES



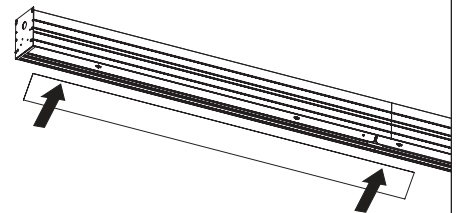
1



I

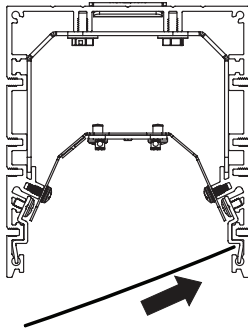
FOLLOW NORMAL  
JOINING INSTRUCTIONS

2

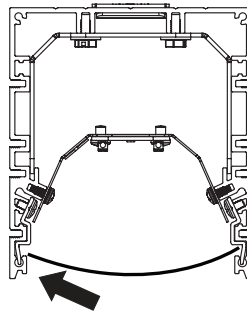


WATER SHIELD LENS INSTALLS  
SHINY SIDE TOWARDS LED

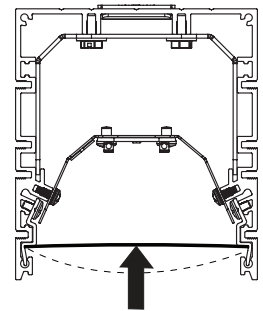
3



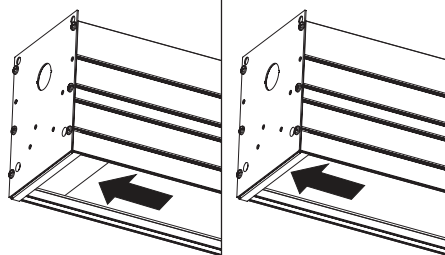
4



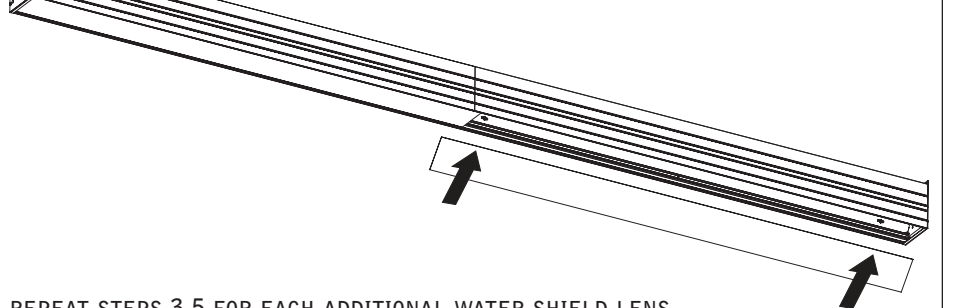
5



6



7



REPEAT STEPS 3-5 FOR EACH ADDITIONAL WATER SHIELD LENS

Luminaires must be installed by a qualified electrician (check with local and national codes for proper installation).  
To prevent electrical shock, disconnect electrical supply before installation or servicing.

