

Seem® 4 LED Asymmetric trim flange

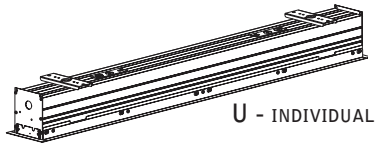
FSM4AL-TF



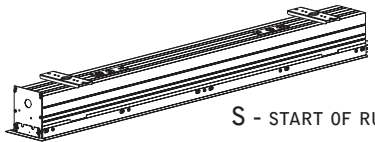
NEW CONSTRUCTION ONLY
CONFIGURATIONS ARE RUN SPECIFIC, PLEASE CONSULT FACTORY DRAWINGS BEFORE BEGINNING INSTALLATION.



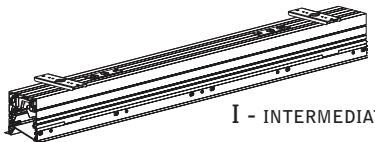
FOCAL POINT



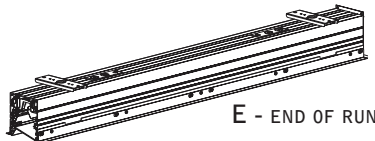
U - INDIVIDUAL



S - START OF RUN



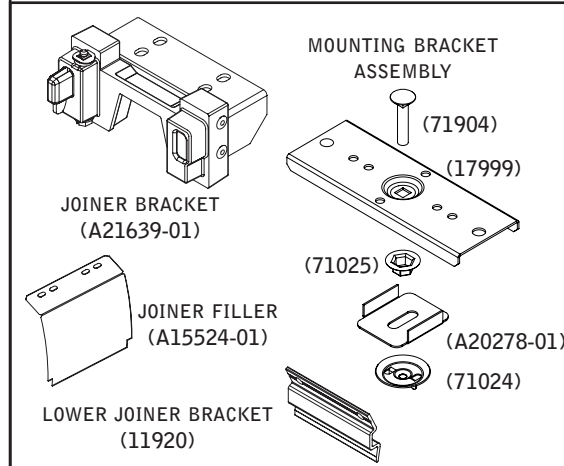
I - INTERMEDIATE



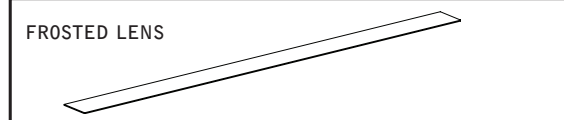
E - END OF RUN

PARTS LISTS

PARTS SHIPPED INSTALLED



SHIELDING SHIPPED LOOSE



KEY



POWER OFF



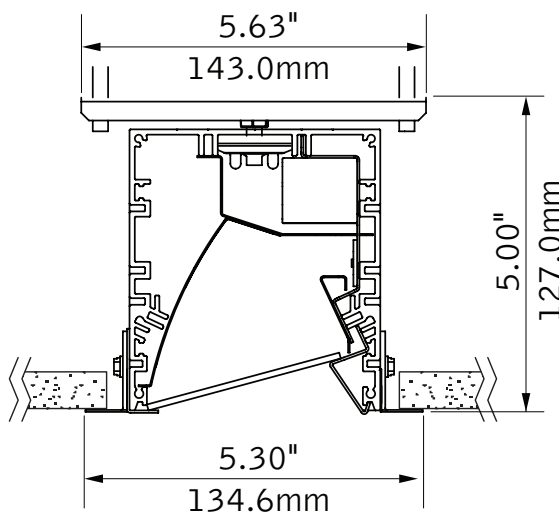
POWER ON



ATTENTION

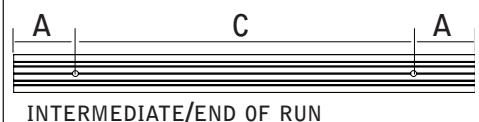
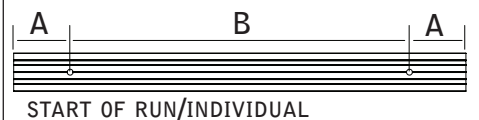


**MOUNTING BRACKET MUST BE
INSTALLED PRIOR TO DRYWALL**



MOUNTING BRACKET MUST BE SECURED TO STRUCTURE ABOVE.
1/4" - 20 CARRIAGE BOLT MAY BE SUPPLIED BY OTHERS FOR GREATER ADJUSTABILITY.

MOUNTING LOCATIONS



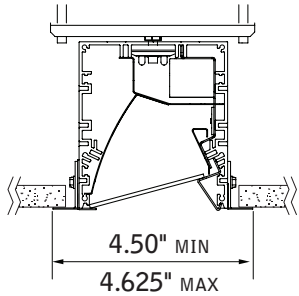
housing length	A	B	C
2'	1"	21"	22"
3'	1"	33"	34"
4'	5.5"	36"	37"
5'	5.5"	48"	49"
6'	5.5"	60"	61"
7'	5.5"	72"	73"
8'	5.5"	84"	85"



MOUNTING LOCATION CHART IS AN
APPROXIMATE GUIDE ONLY.

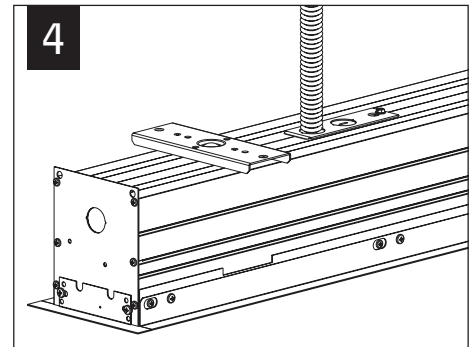
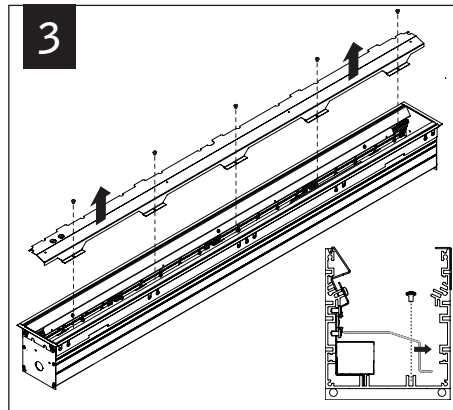
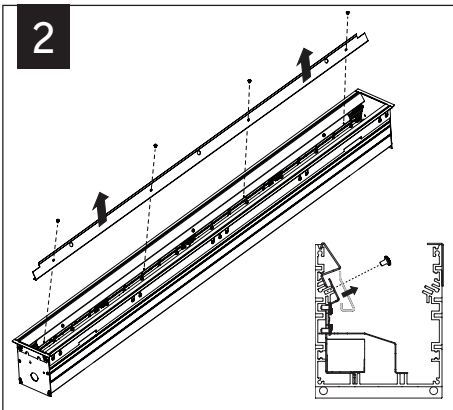
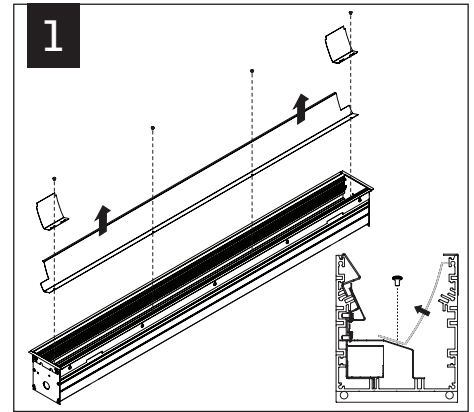
Luminaires must be installed by a qualified electrician (check with local and national codes for proper installation).
To prevent electrical shock, disconnect electrical supply before installation or servicing.

CEILING CUTOUT

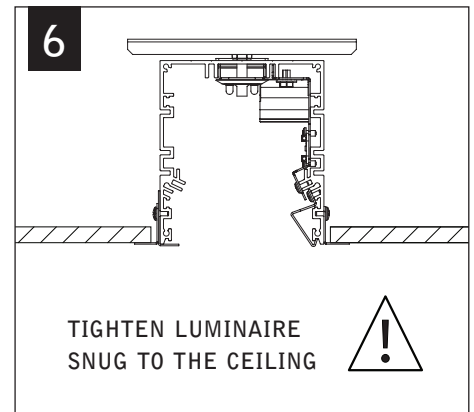
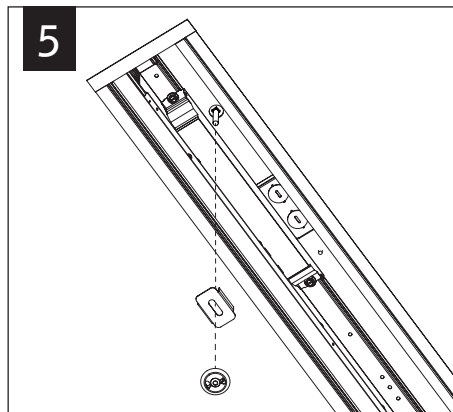
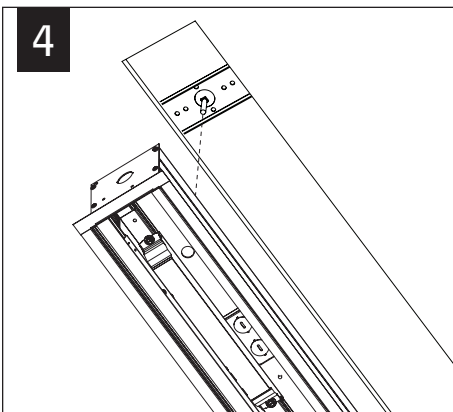


CEILING CUTOUT LENGTH =
NOMINAL RUN LENGTH MINUS 5/16" (+/- 1/16")

EXAMPLE:
12' RUN LENGTH = 11' 11-3/4" CUTOUT LENGTH



MAKE ELECTRICAL CONNECTIONS

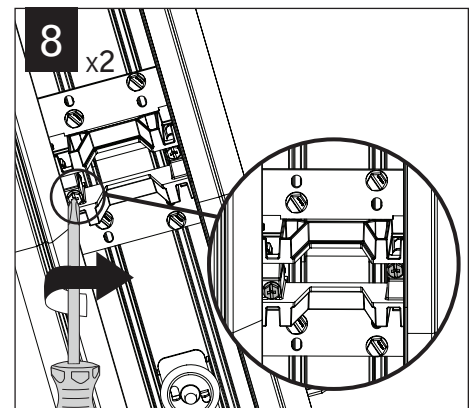
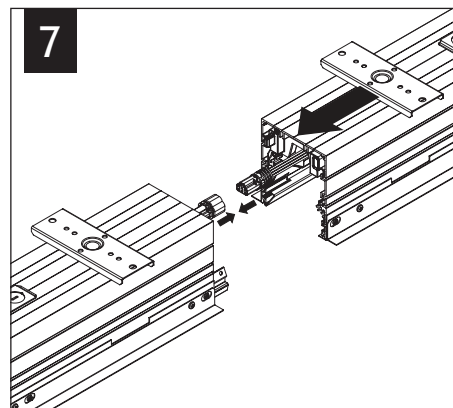


TIGHTEN LUMINAIRE
SNUG TO THE CEILING

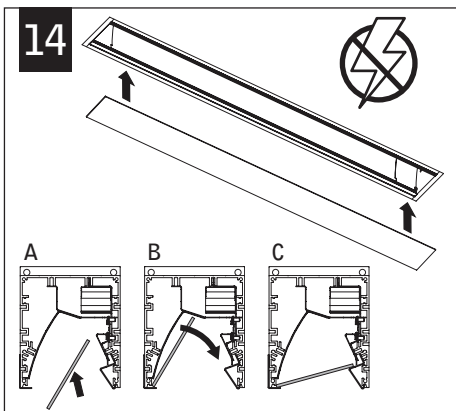
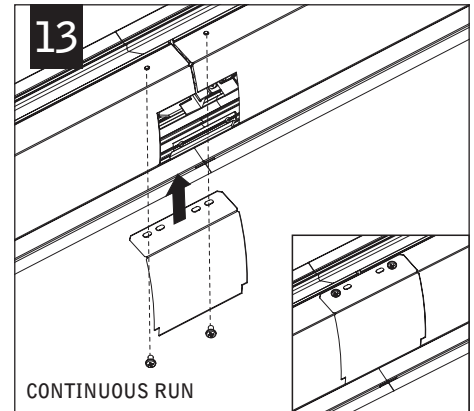
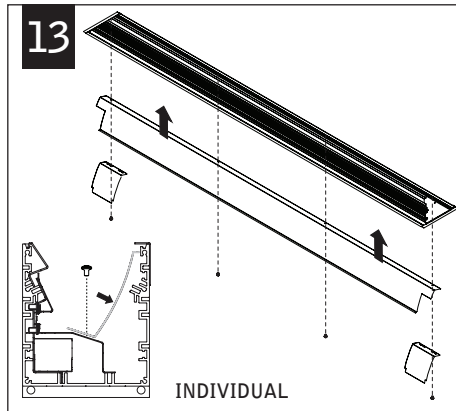
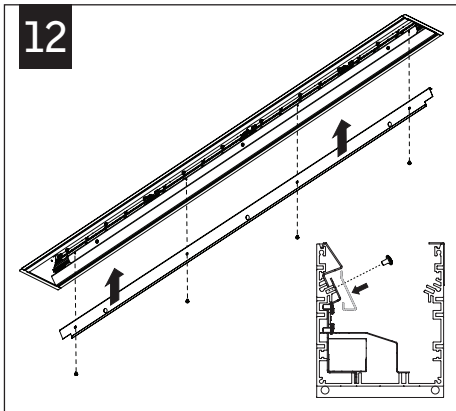
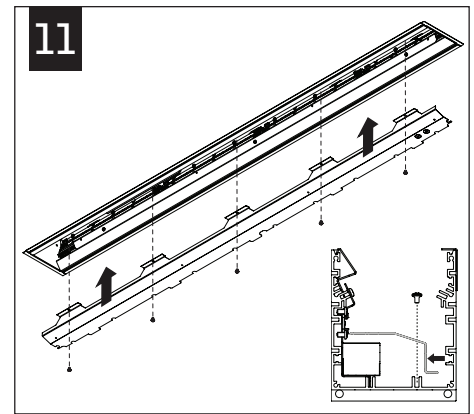
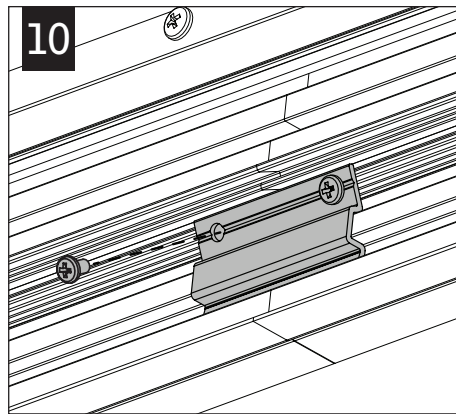
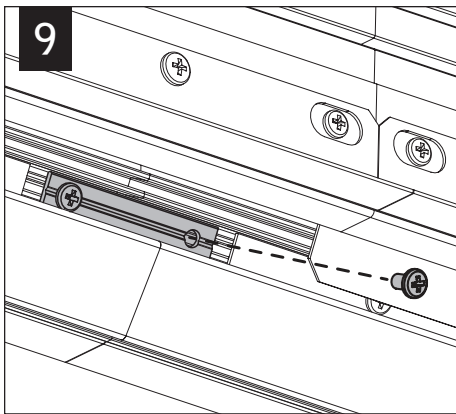


REPEAT STEPS 4-6
UNTIL ALL UNITS ARE
IN THE CEILING

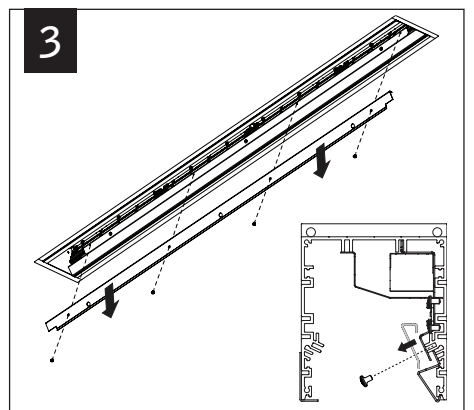
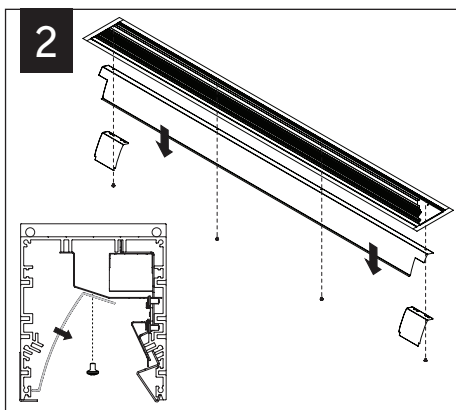
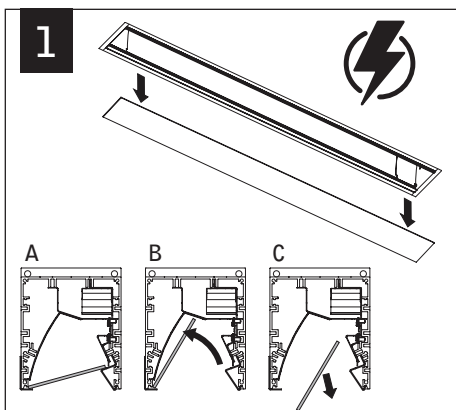
INDIVIDUAL INSTALLATIONS
SKIP TO STEP 11



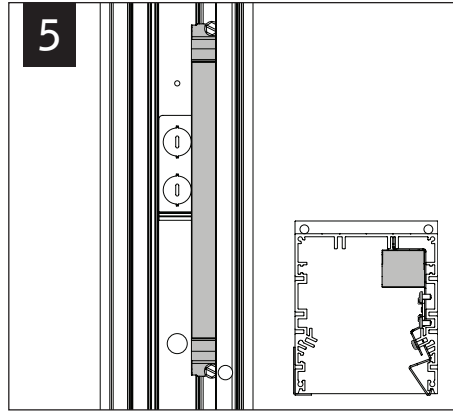
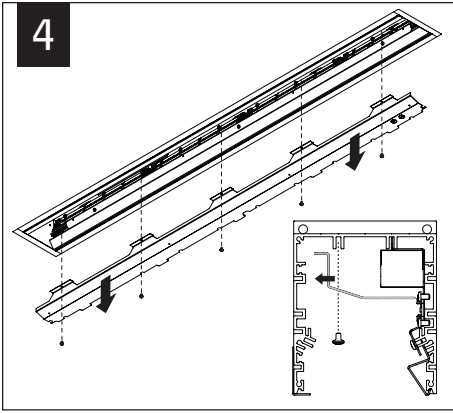
Luminaires must be installed by a qualified electrician (check with local and national codes for proper installation).
To prevent electrical shock, disconnect electrical supply before installation or servicing.



DRIVER SERVICE



Luminaires must be installed by a qualified electrician (check with local and national codes for proper installation).
To prevent electrical shock, disconnect electrical supply before installation or servicing.



Contractor is responsible for adequately reinforcing walls and/or ceilings to support luminaire weight. Focal Point, LLC accepts no responsibility for inadequately reinforced walls and/or ceilings. The information contained in this drawing is the sole property of Focal Point, LLC. Any reproduction in part or whole without the written permission of Focal Point, LLC is prohibited.