

Seem® 2 LED Perimeter

FSM2PR | GRID/TRIMLESS DRYWALL



FOCAL POINT®



BEFORE YOU BEGIN

- Luminaires must be installed by a qualified electrician (check with local and national codes for proper installation).
- To prevent electrical shock, disconnect electrical supply before installation or servicing.
- Contractor is responsible for adequately reinforcing walls and/or ceilings to support fixture weight.
- Focal Point, LLC accepts no responsibility for inadequately reinforced walls and/or ceilings.
- The information contained in this drawing is the sole property of Focal Point, LLC. Any reproduction in part or whole without the written permission of Focal Point, LLC is prohibited.

INSTRUCTION KEY



ATTENTION



SEE ADDITIONAL INSTRUCTIONS



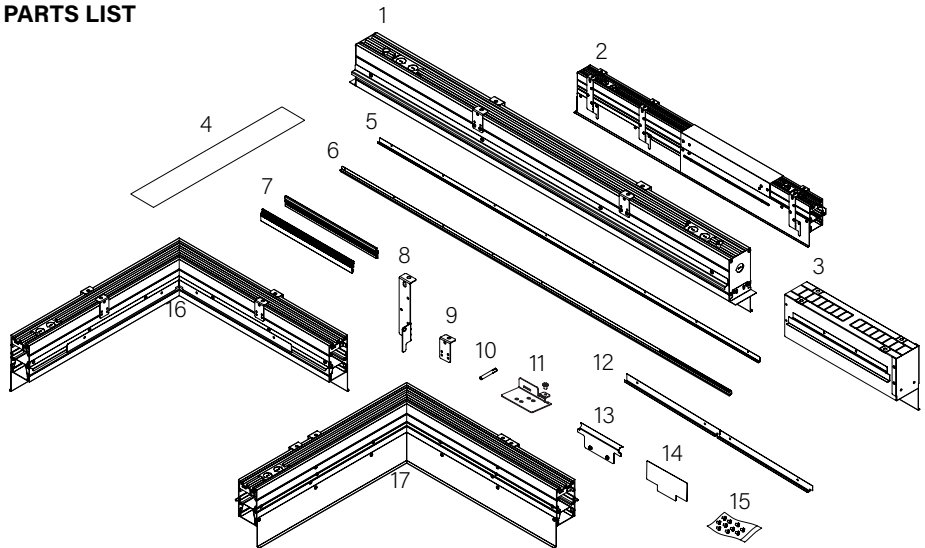
POWER OFF



POWER ON

COMPONENT KEY

PARTS LIST



1 Housing

2 Adjustable housing

3 Sliding sleeve (ss)
(shipped installed. SSB indicates
a sliding sleeve at both ends)

4 Finish plate

5 J-rail

6 Z-rail

7 Housinf rail kit

8 Tie-wire/grid bracket

9 Tie-wire bracket

10 Joiner pin

11 Joiner bracket assembly

12 Corner j-rail

13 Lens end piece

14 Lens tool

15 Hardware bag

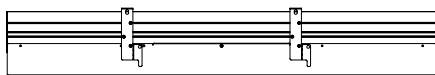
16 Outside corner

17 Inside corner

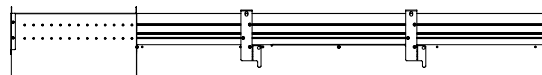
BY OTHERS:

Grid ceiling -
15/16" or 9/16" flat tee main
runner required
for finish edge.

HOUSING TYPES - 4' SHOWN



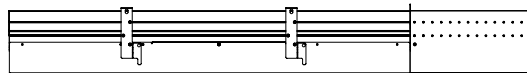
INDIVIDUAL (MAY INCLUDE SLIDING SLEEVES)



START (SHOWN WITH SLIDING SLEEVE)



INTERMEDIATE



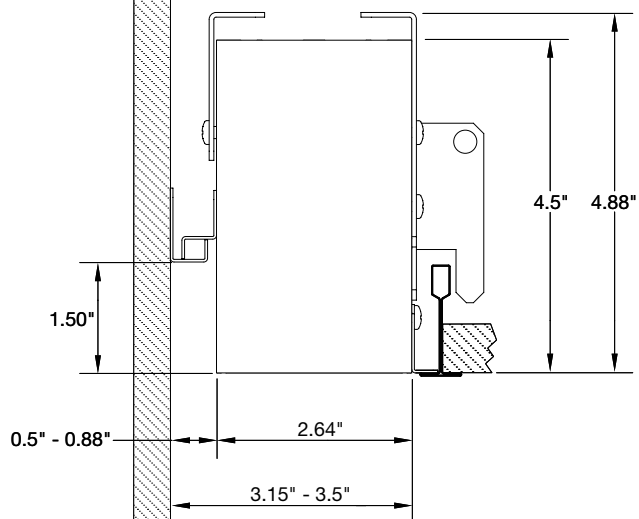
END (SHOWN WITH SLIDING SLEEVE)



ADJUSTABLE HOUSING

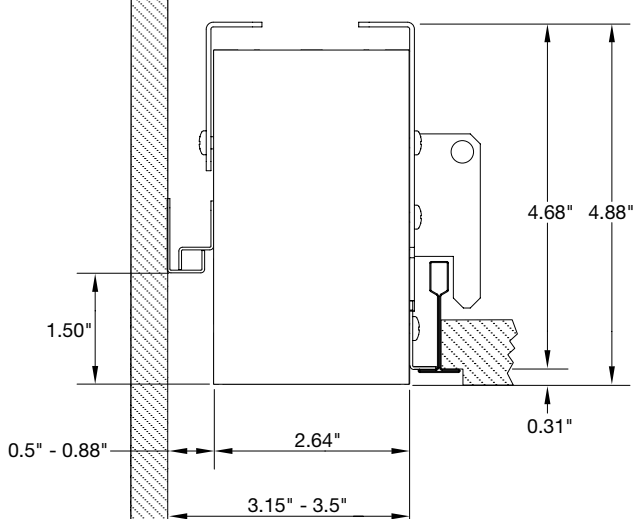
WALL/CEILING PREPARATION

Flush Lens Lay-In Grid



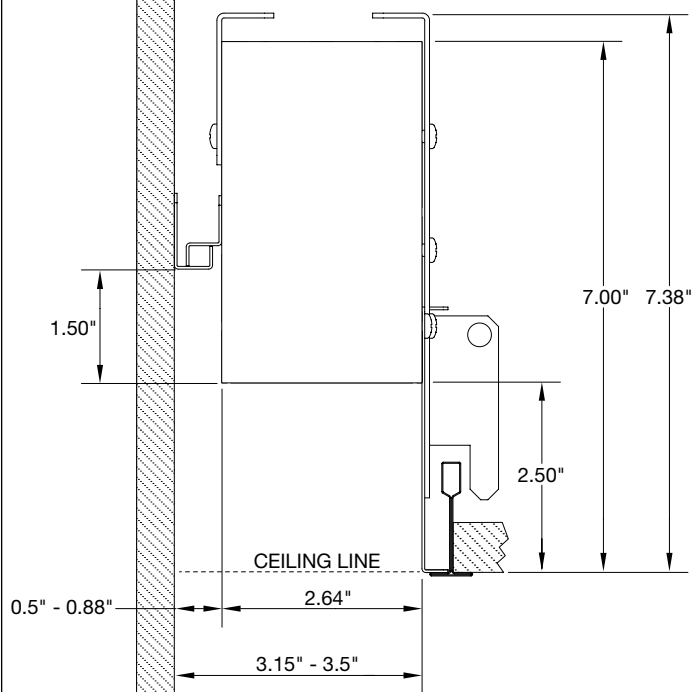
GRID CEILING - 15/16" OR 9/16" FLAT TEE MAIN RUNNER REQUIRED FOR FINISH EDGE.

Flush Lens Slot Tee/Tegular



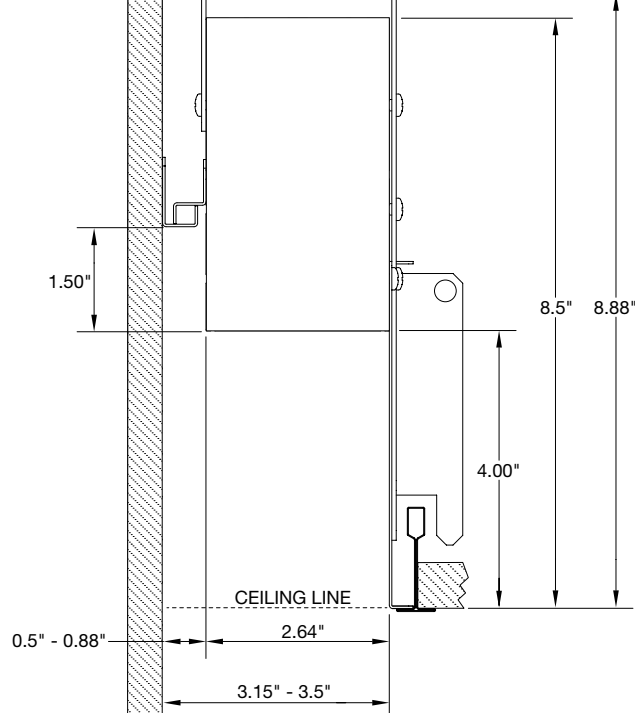
GRID CEILING - 15/16" OR 9/16" FLAT TEE MAIN RUNNER REQUIRED FOR FINISH EDGE.

Regressed 2.5" Grid



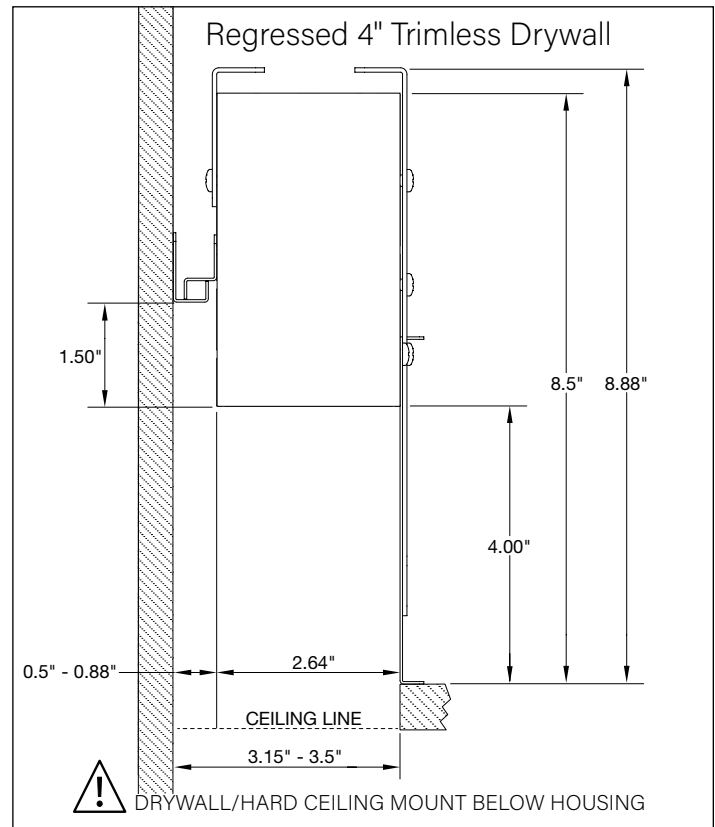
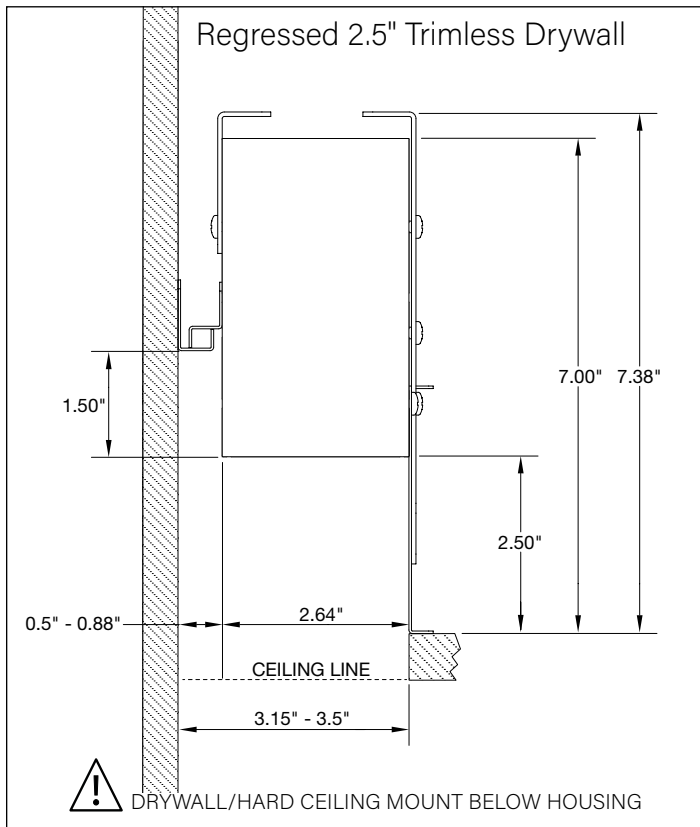
GRID CEILING - 15/16" OR 9/16" FLAT TEE MAIN RUNNER REQUIRED FOR FINISH EDGE.

Regressed 4" Grid



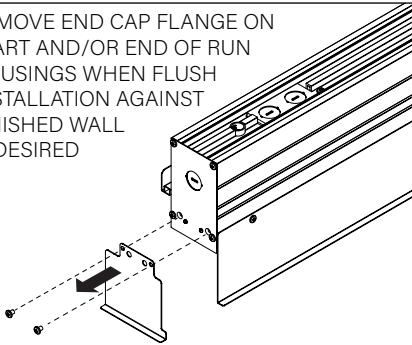
GRID CEILING - 15/16" OR 9/16" FLAT TEE MAIN RUNNER REQUIRED FOR FINISH EDGE.

WALL/CEILING PREPARATION



OPTIONAL

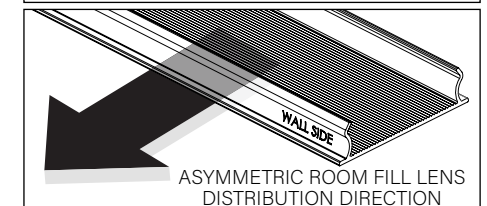
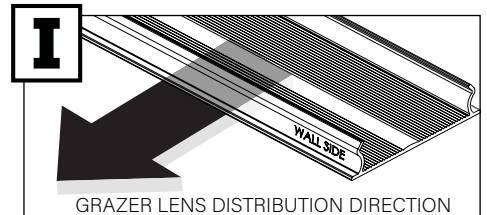
REMOVE END CAP FLANGE ON START AND/OR END OF RUN HOUSINGS WHEN FLUSH INSTALLATION AGAINST FINISHED WALL IS DESIRED



FOCAL POINT RECOMMENDS STARTING WITH CORNER INSTALLATION IF APPLICABLE

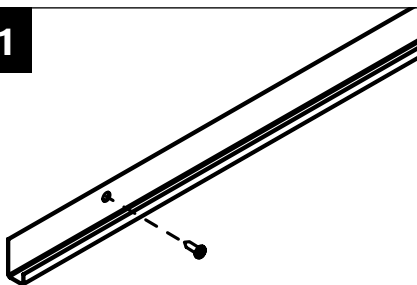
BASIC INSTALLATION, STEPS 1-13
ADJUSTABLE HOUSING, PAGE 5
SLIDING SLEEVES, PAGE 6
CORNERS, PAGE 7

SLIDING SLEEVE PAIRS (SSB) START & END WITH A SLIDING SLEEVE



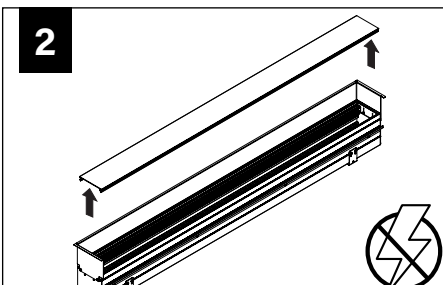
BASIC INSTALLATION

1



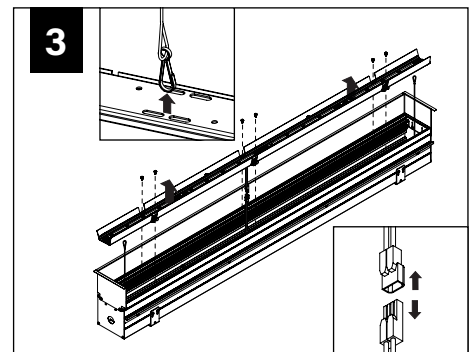
MOUNT J-RAIL TO WALL
 (HARDWARE BY OTHERS)

2

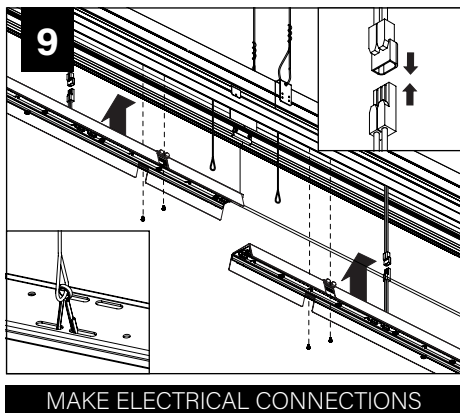
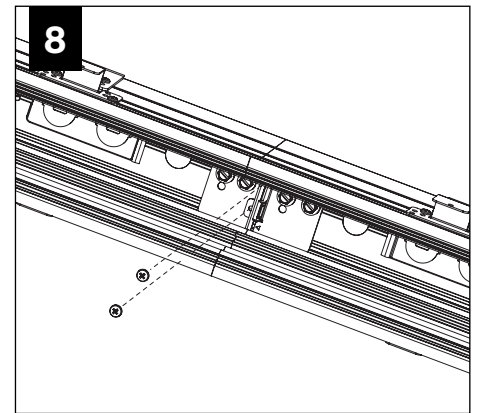
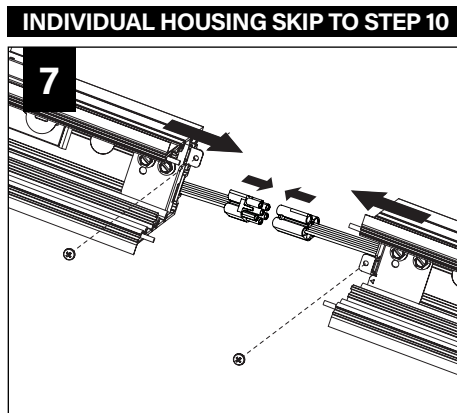
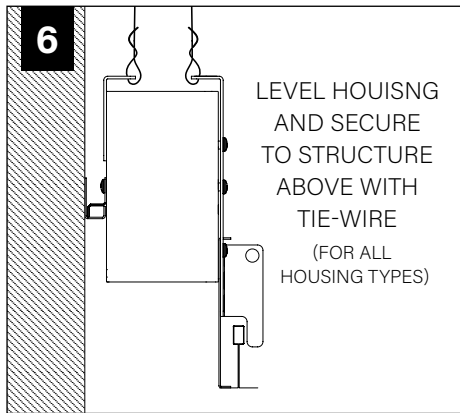
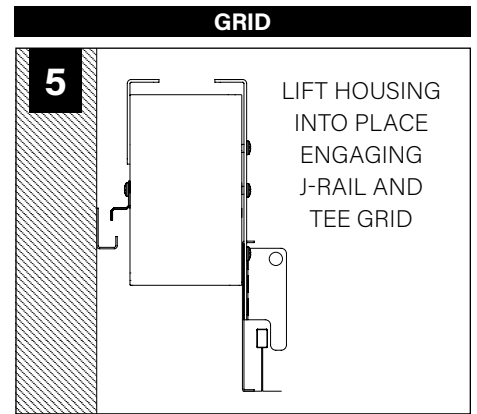
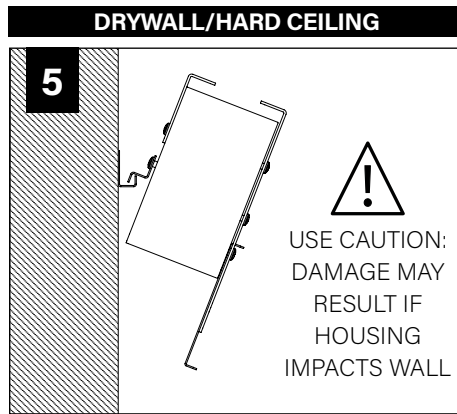
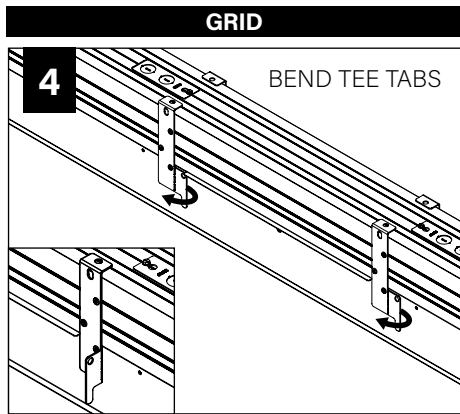


START, INTERMEDIATE, & END UNITS ONLY

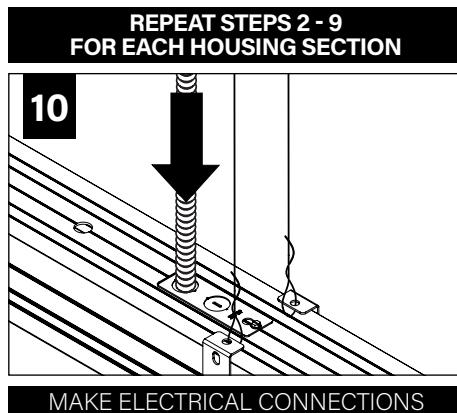
3



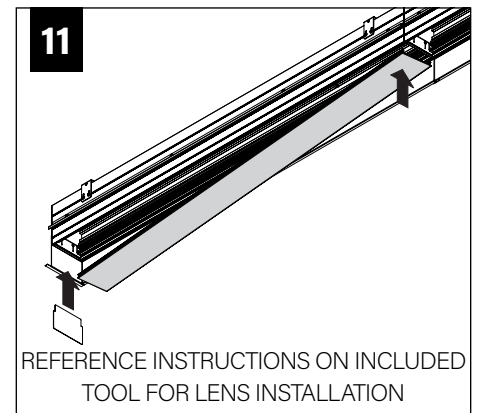
START, INTERMEDIATE, & END UNITS ONLY



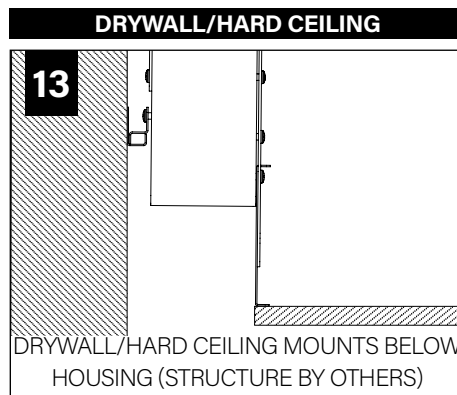
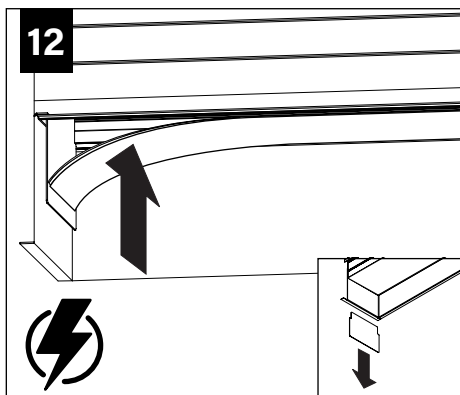
MAKE ELECTRICAL CONNECTIONS



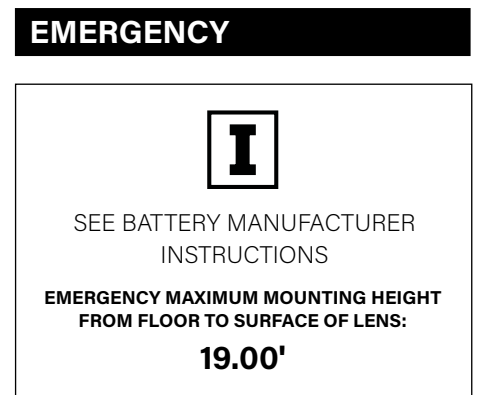
MAKE ELECTRICAL CONNECTIONS



REFERENCE INSTRUCTIONS ON INCLUDED TOOL FOR LENS INSTALLATION

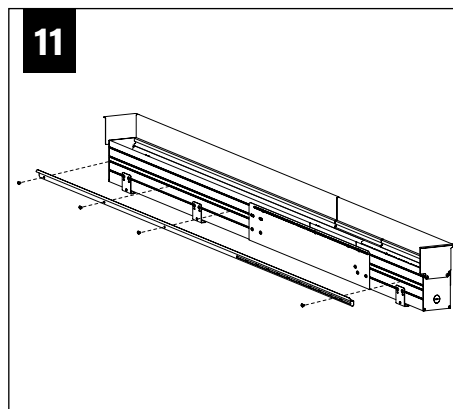
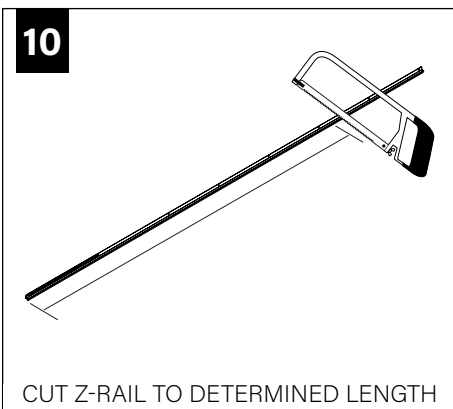
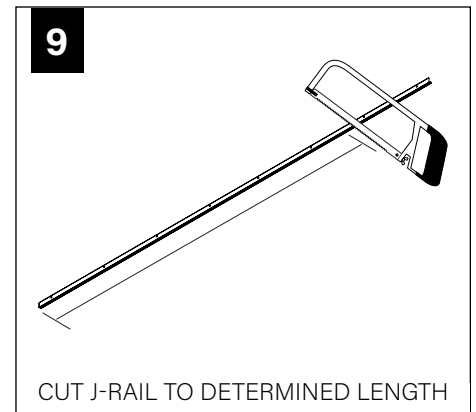
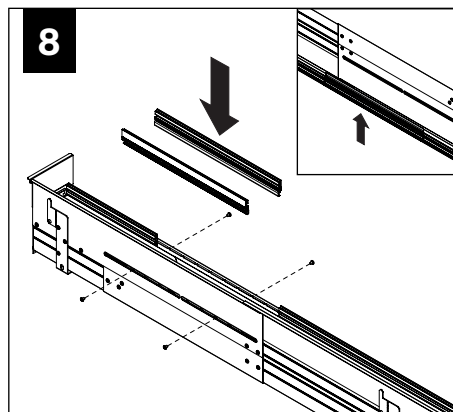
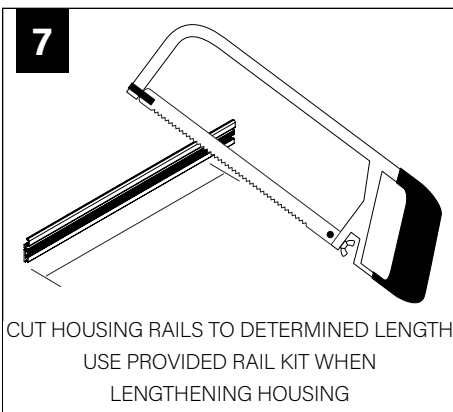
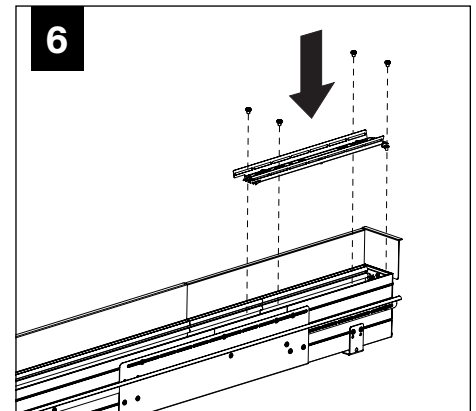
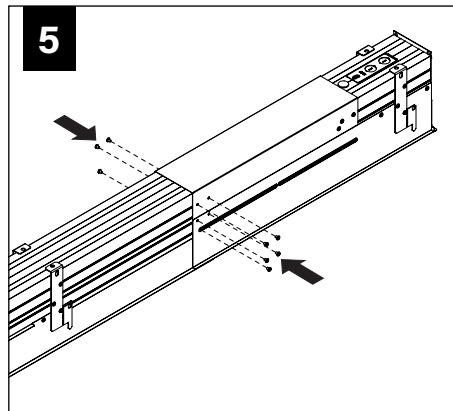
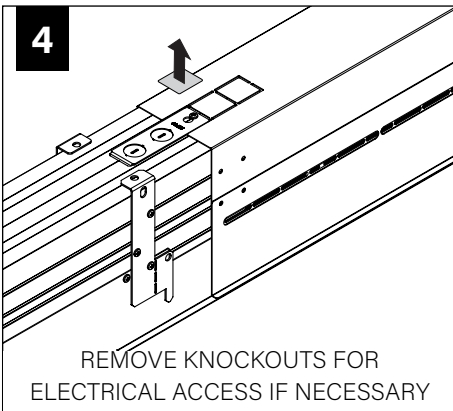
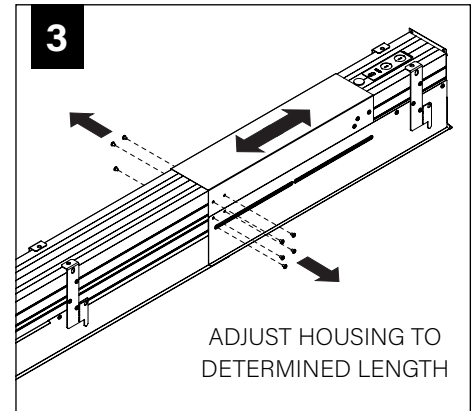
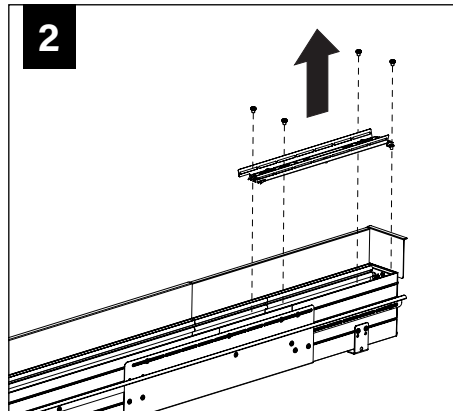
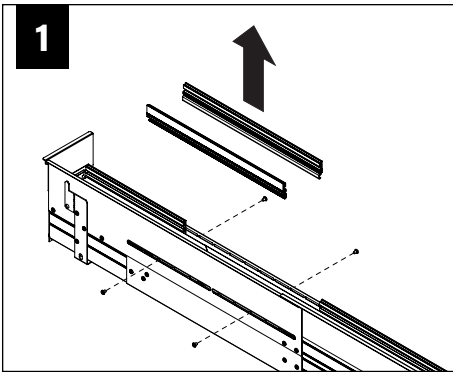


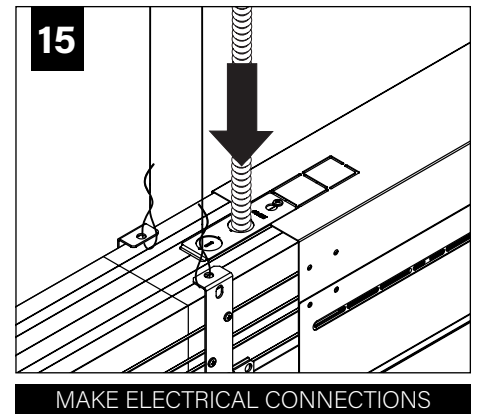
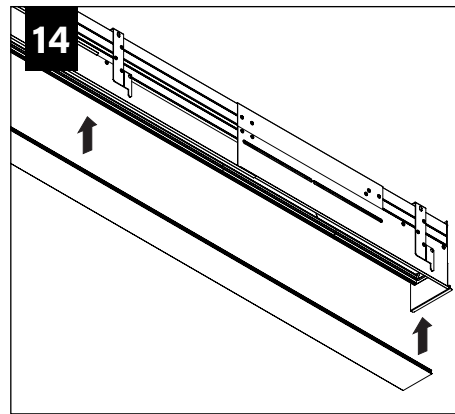
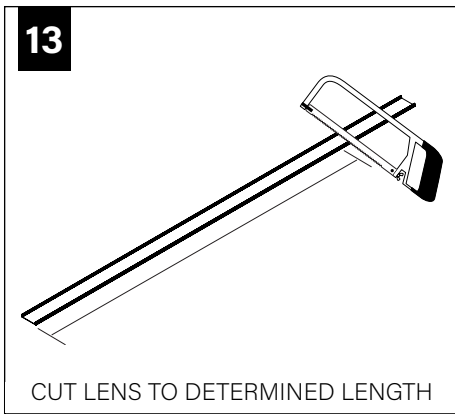
DRYWALL/HARD CEILING MOUNTS BELOW HOUSING (STRUCTURE BY OTHERS)



ADJUSTABLE HOUSING

IF HOUSING LENGTH IS CORRECT SKIP TO STEP 9





SLIDING SLEEVES



MAX LENGTH 12" PER SLEEVE

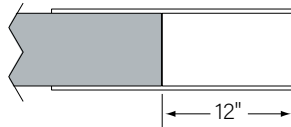


SLIDING SLEEVE DOES NOT INTEGRATE WITH ADJUSTABLE HOUSING

SINGLE SLIDING SLEEVE (SS):

EXAMPLE:

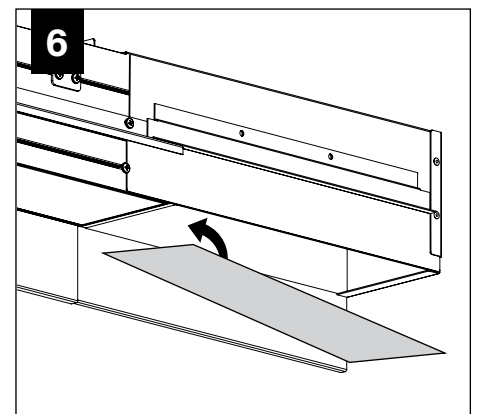
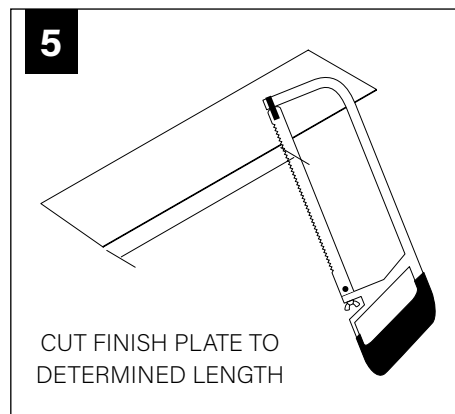
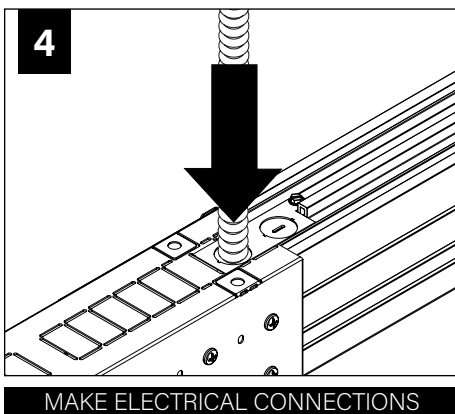
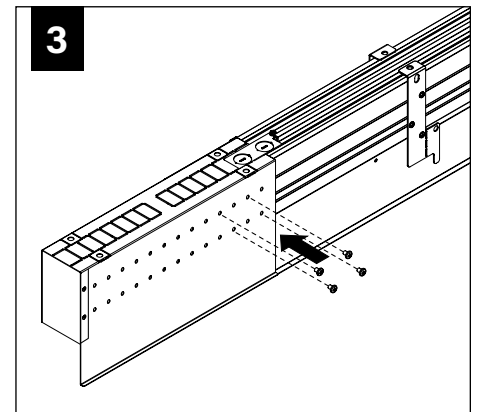
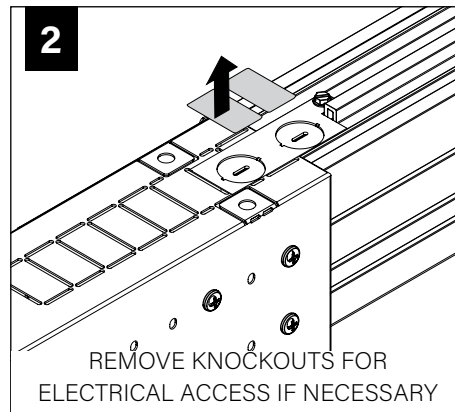
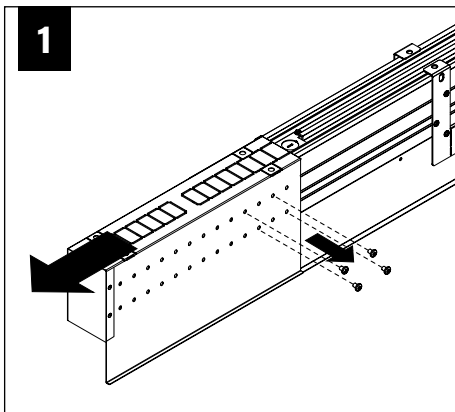
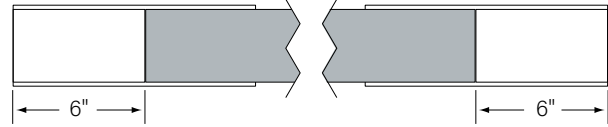
21' RUN LENGTH - 20' HOUSING = 12" SLIDING SLEEVE

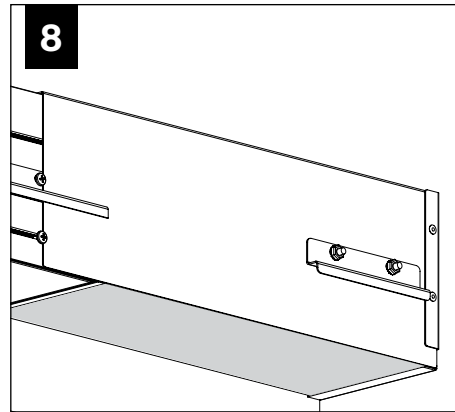
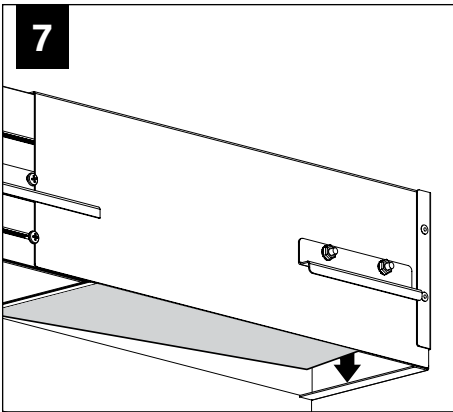


SLIDING SLEEVE PAIR (SSB):

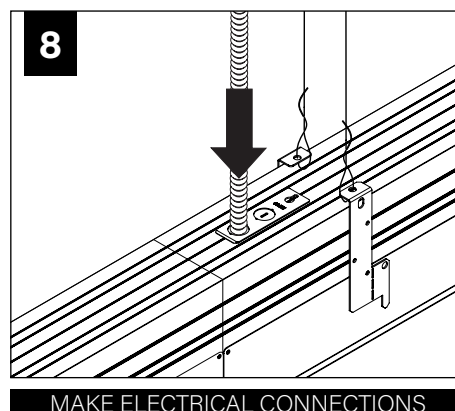
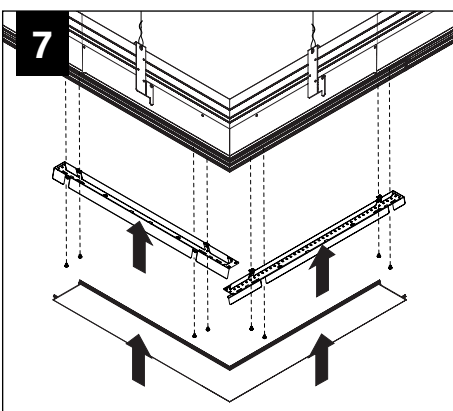
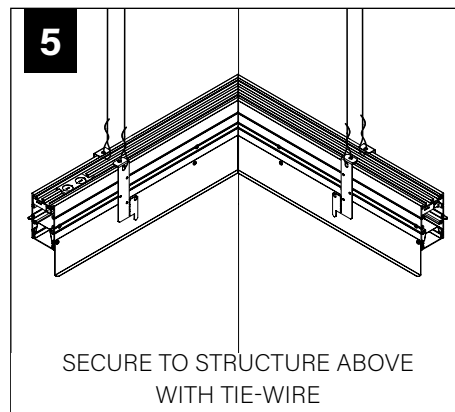
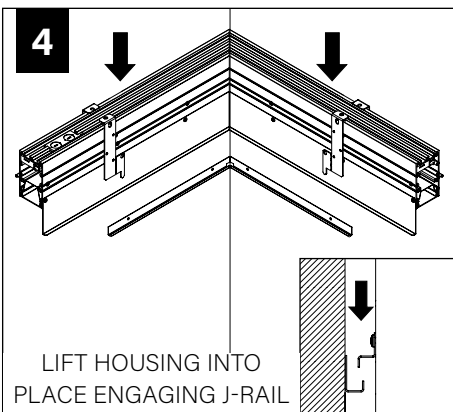
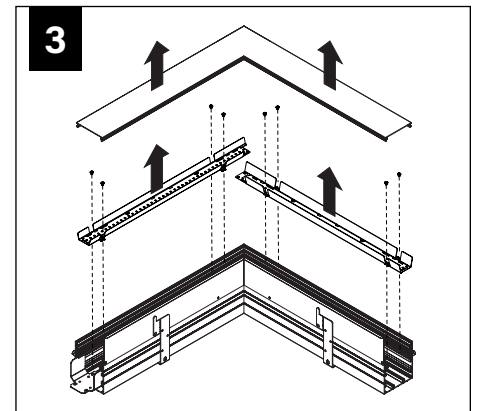
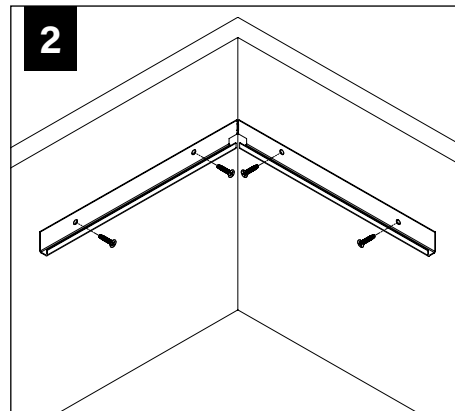
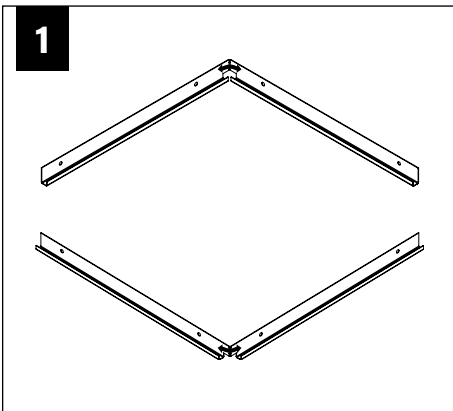
EXAMPLE:

(21' RUN LENGTH - 20' HOUSING) / 2 = 6" SLIDING SLEEVE ON EACH END

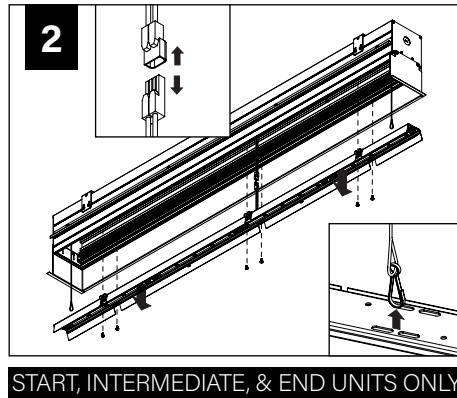
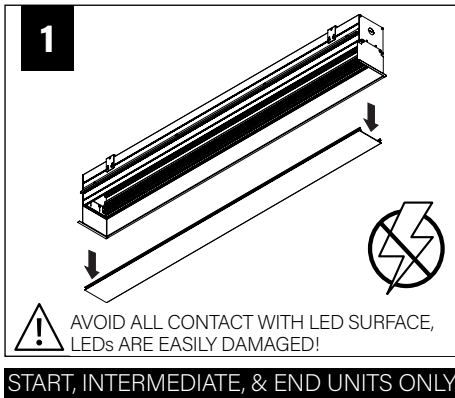




CORNERS

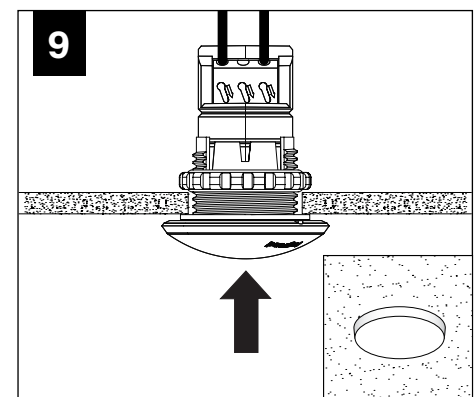
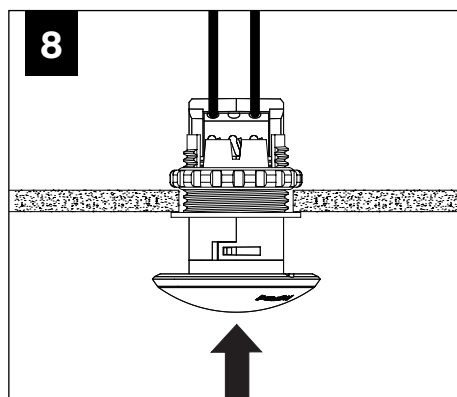
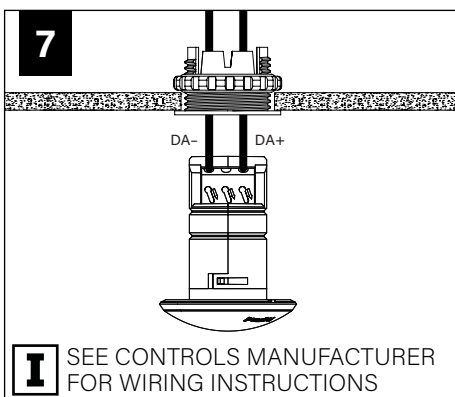
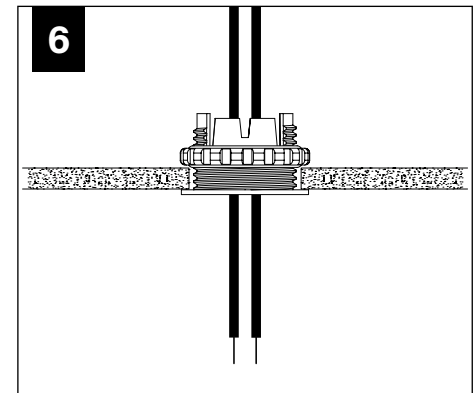
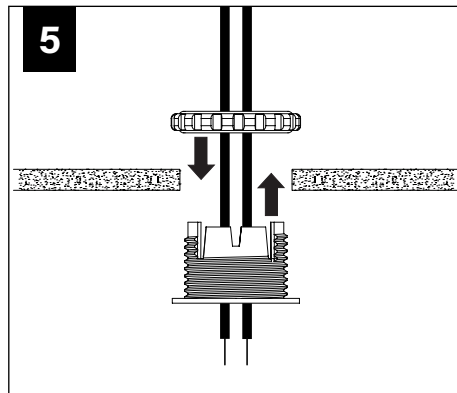
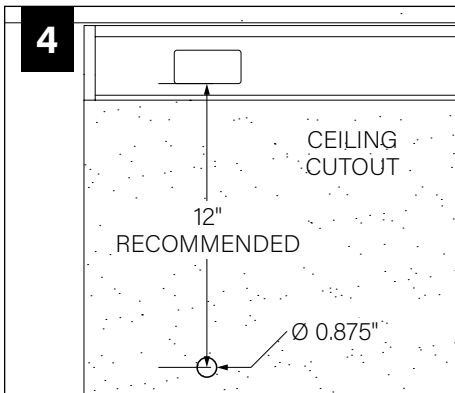
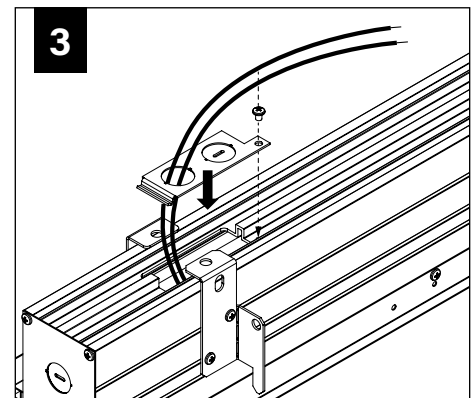
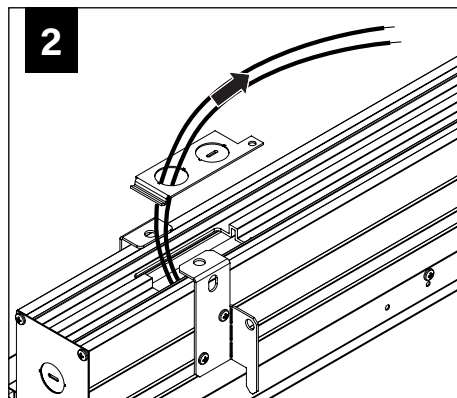
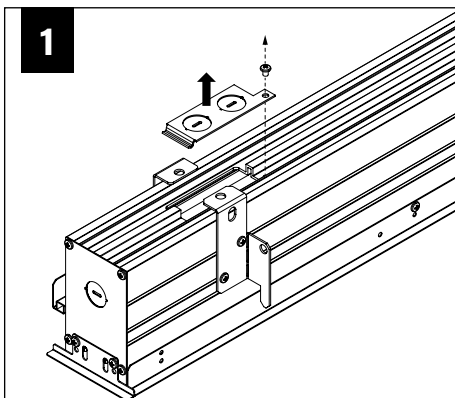


DRIVER SERVICE

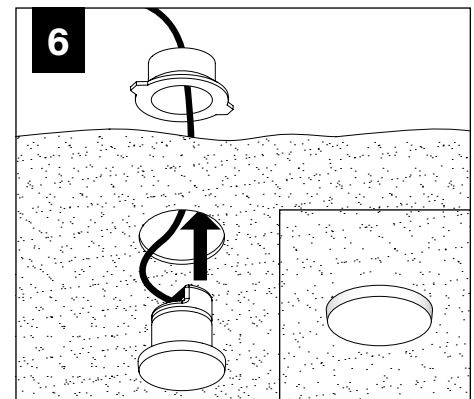
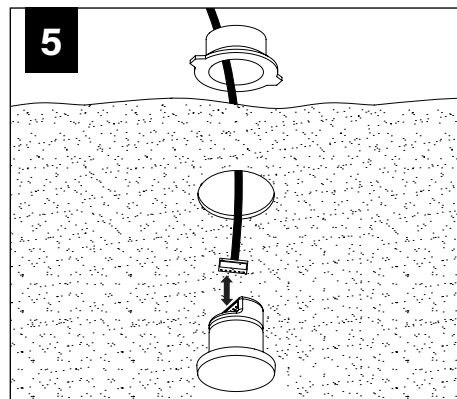
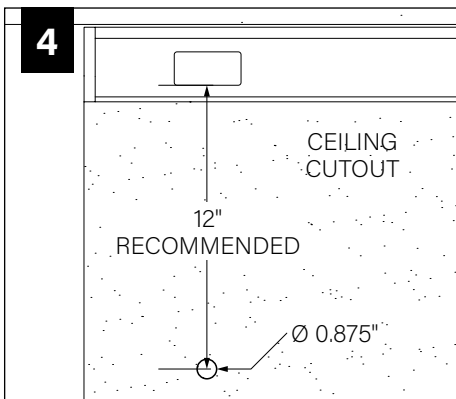
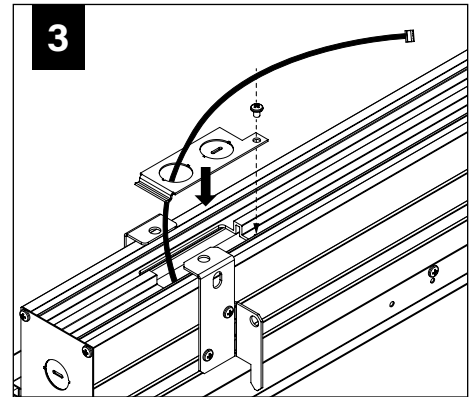
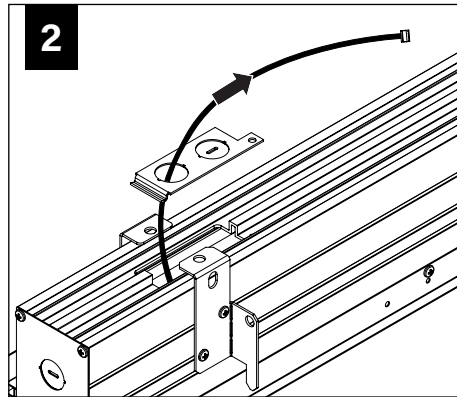
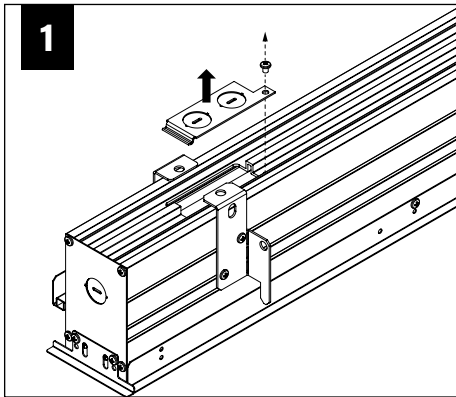


GRID ONLY

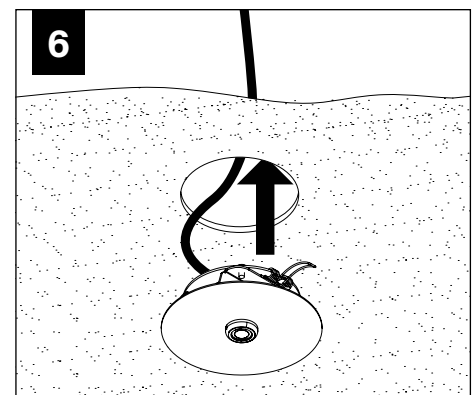
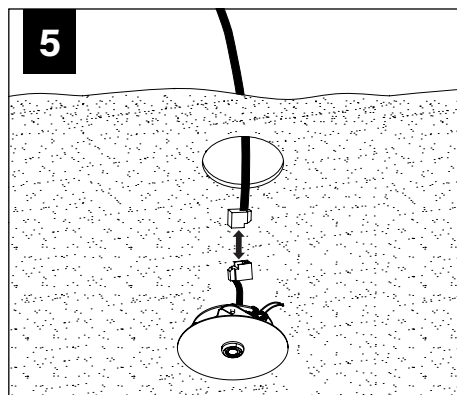
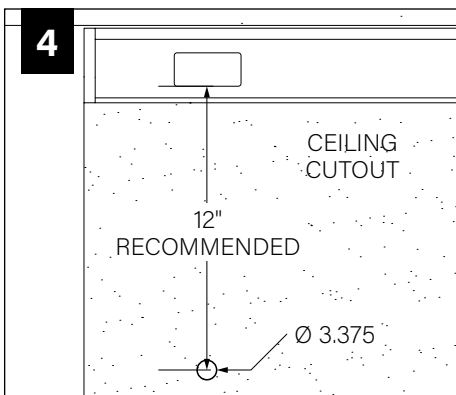
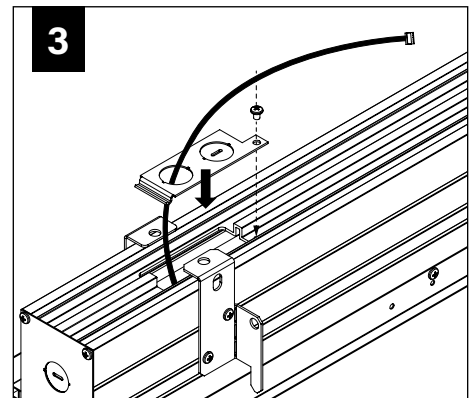
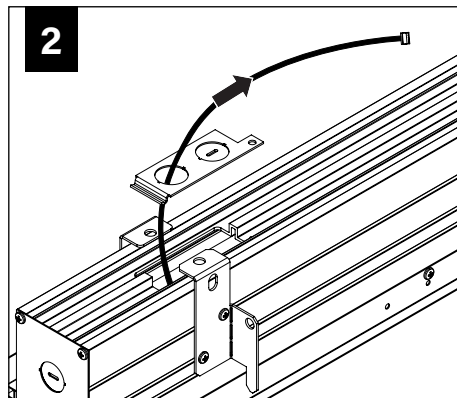
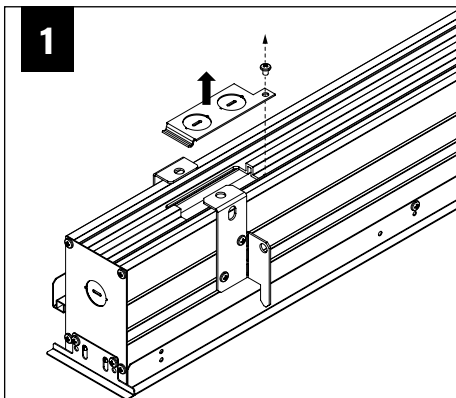
WATTSTOPPER



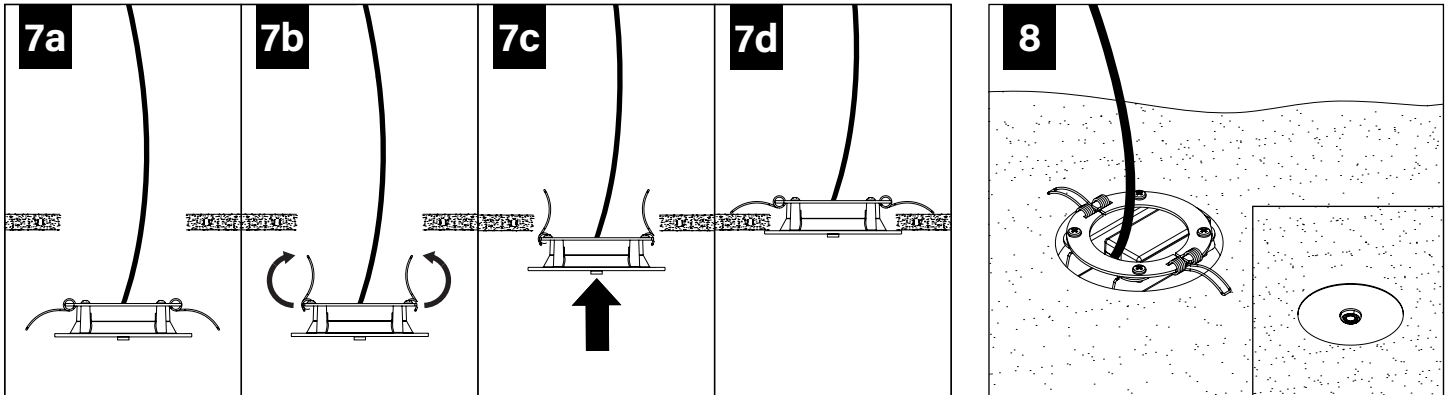
ENLIGHTED



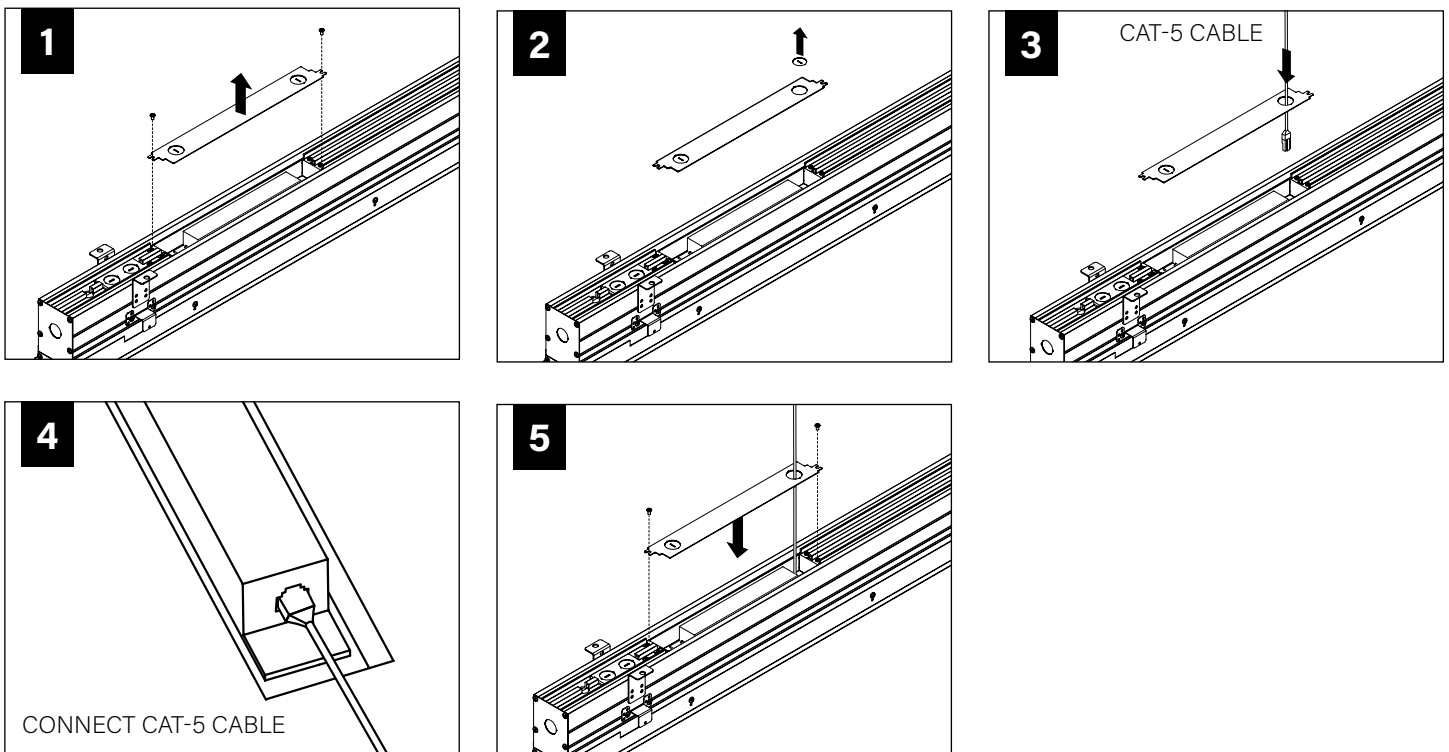
WAVELINX



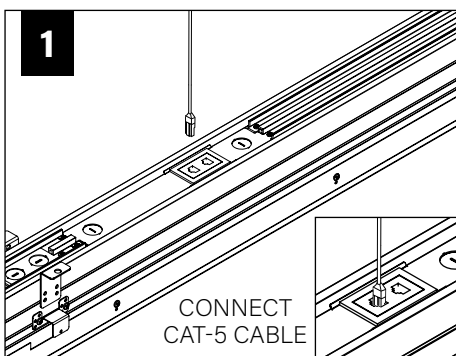
WAVELINX



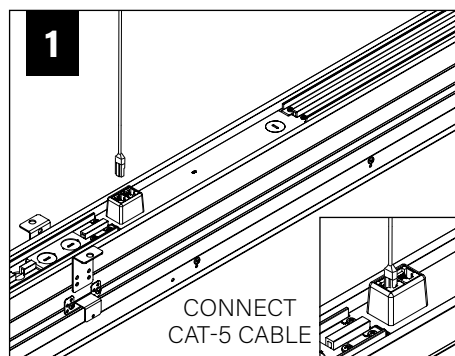
ACUITY nLIGHT



WATTSTOPPER



HUBBELL NX



LUTRON ATHENA

