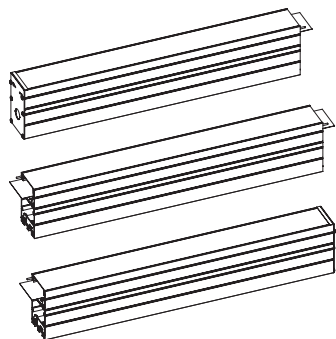
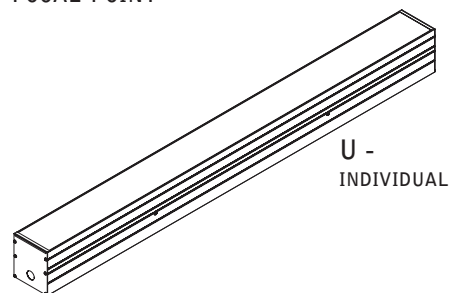


seem 2 led wet location



FOCAL POINT



S -
START OF RUN

I -
INTERMEDIATE

E -
END OF RUN

KEY



POWER OFF



POWER ON

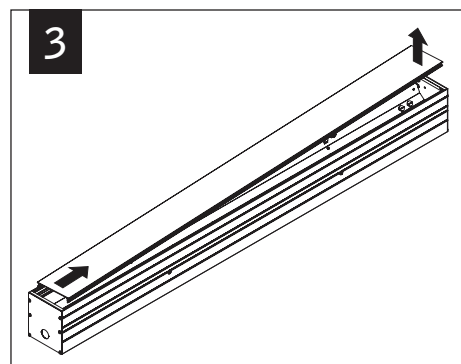
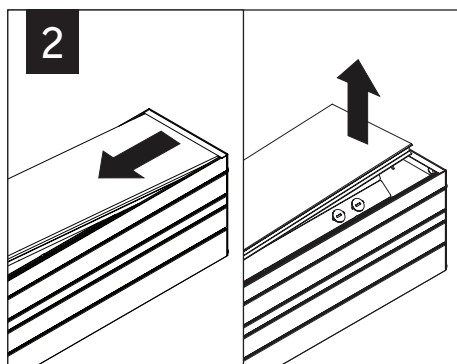
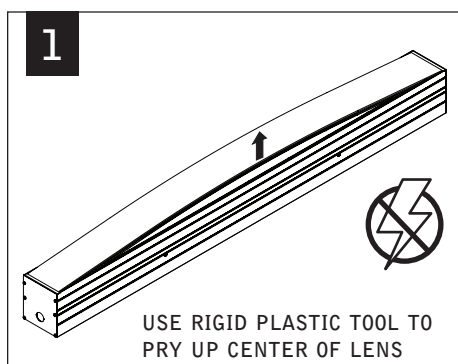


ATTENTION

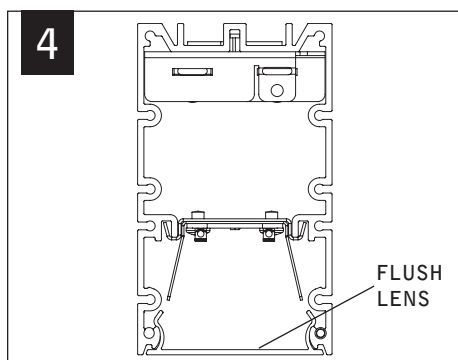
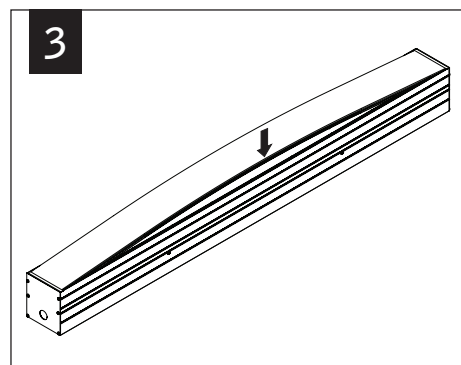
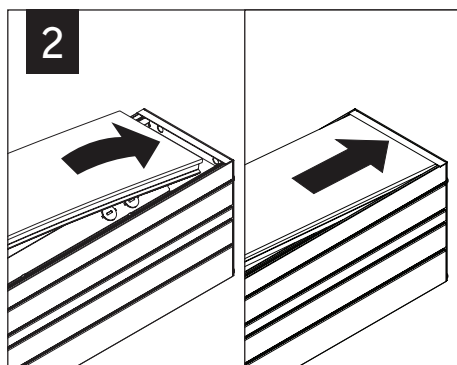
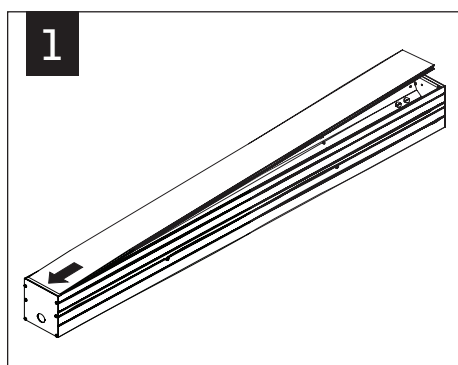


SEE ADDITIONAL
INSTRUCTIONS

INDIVIDUAL UNITS - LENS REMOVAL



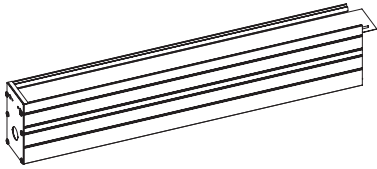
INDIVIDUAL UNITS - LENS INSTALLATION



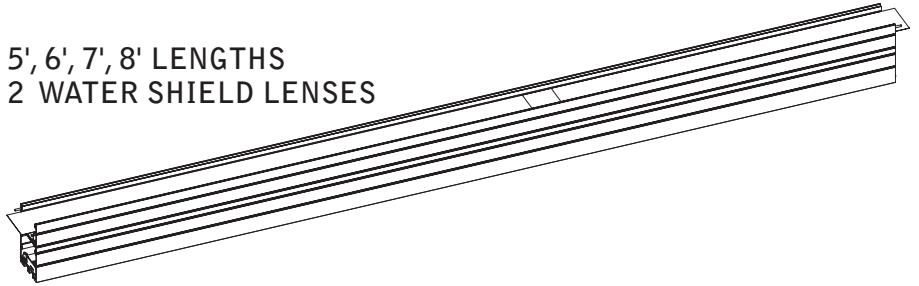
Luminaires must be installed by a qualified electrician (check with local and national codes for proper installation).
To prevent electrical shock, disconnect electrical supply before installation or servicing.

JOINED UNITS

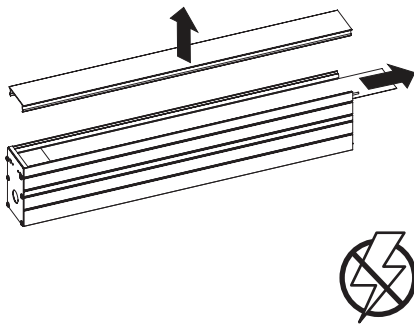
2', 3', 4' LENGTHS
1 WATER SHIELD LENS



5', 6', 7', 8' LENGTHS
2 WATER SHIELD LENSES



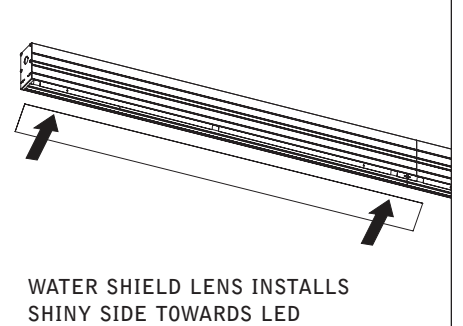
1



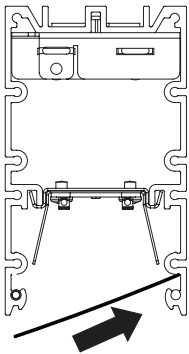
I

FOLLOW NORMAL
JOINING INSTRUCTIONS

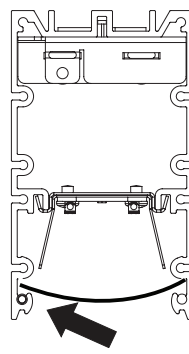
2



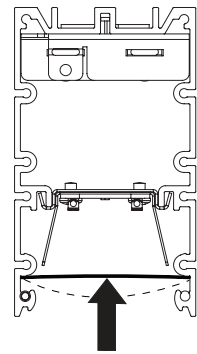
3



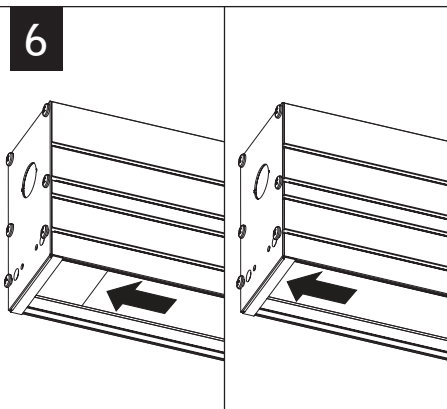
4



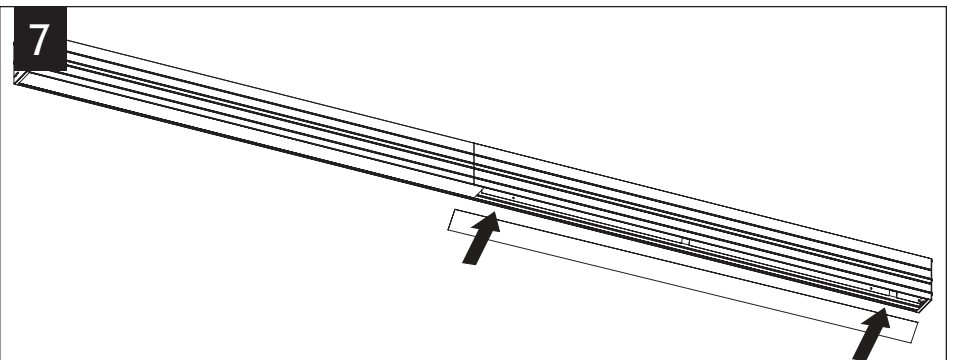
5



6



7



REPEAT STEPS 3-5 FOR EACH ADDITIONAL WATER SHIELD LENS

Luminaires must be installed by a qualified electrician (check with local and national codes for proper installation).
To prevent electrical shock, disconnect electrical supply before installation or servicing.

