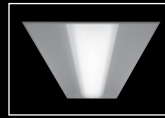
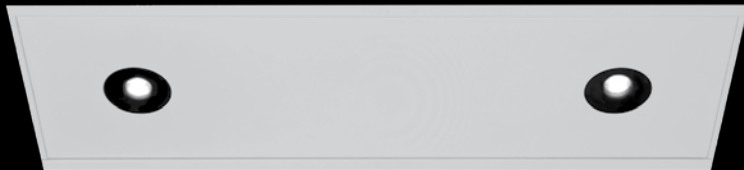


Patient Reading Companion

LED ADJUSTABLE READING/NIGHT LIGHT



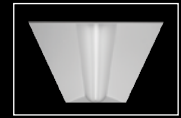
FOCAL POINT®



Apollo 1 2x4 companion



Luna 2x4 companion

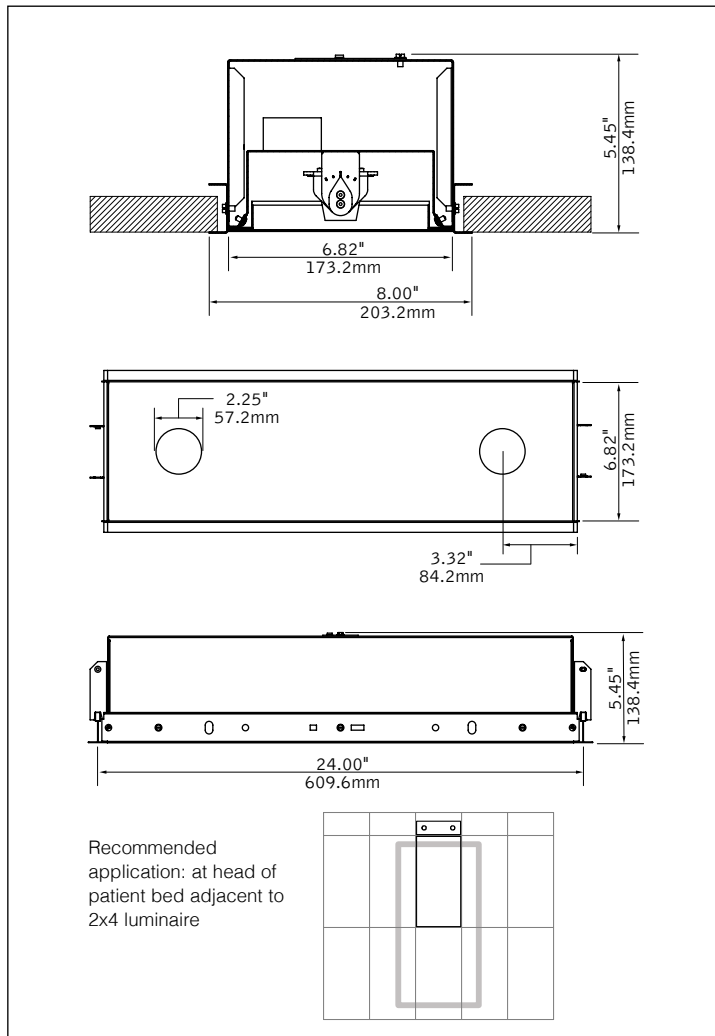


Aerion 2x4 companion



degree markers

DIMENSIONAL DATA



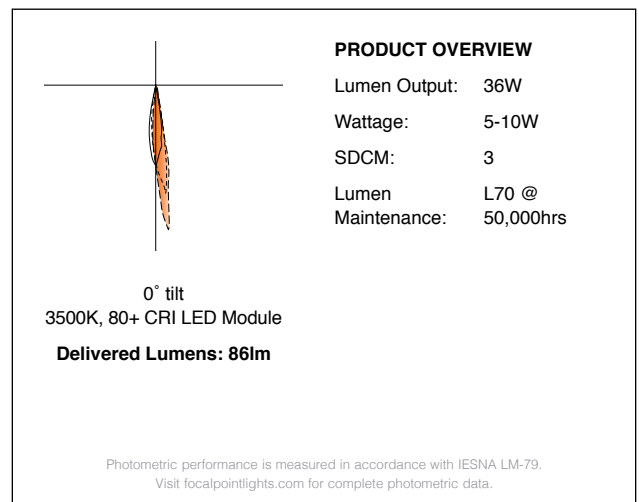
FEATURES

8"x2' recessed LED reading and night light companion for patient bed applications.

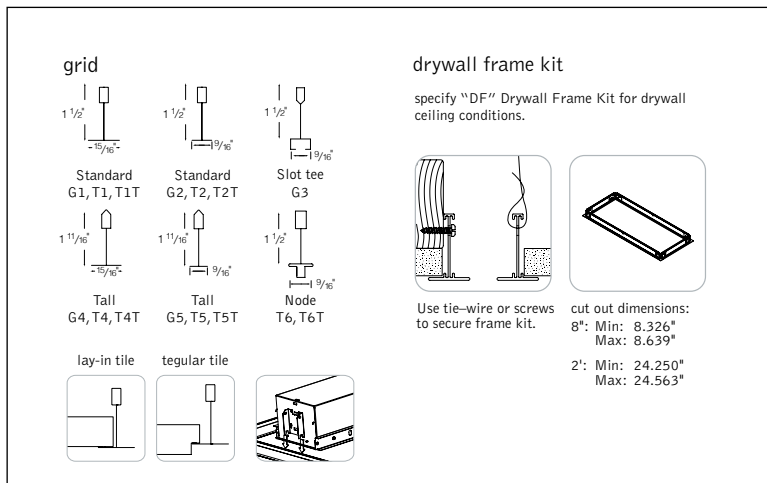
Two 5W adjustable LED reading lights provide targeted illumination for patient comfort and appropriate light levels.

Easily pairs with Apollo 1 or other Focal Point 2x4 luminaires for a complete patient room lighting solution.

PERFORMANCE



MOUNTING INFORMATION



SPECIFICATIONS

Construction

20 Ga. steel trim with torsion springs. Weight: 10 lbs.

Optic

LED connector mounted to adjustable aluminum bracket, 0-30° tilt and 180° rotation with degree markers. Clear TIR optic directs light out of aperture and provides narrow beam for reading and night lights. Ripple TIR optic provides wide beam for night light. Black snoot maintains low brightness appearance. Apertures covered with clear lens. Black painted interior housing.

LED System

Reading and Chart Lights - High efficacy 5W, 3500K, 80+ CRI white led on aluminum clad circuit board with connector for optimum heat dissipation. Night Light – 620nm led on aluminum clad circuit board with connector. Constant current, fixed output driver.

Electrical

Optional Low Voltage Controller is designed to function seamlessly alongside delicate hospital electronics. It emits no electromagnetic noise that either patient or equipment will detect. Up to two contact switches can access two circuit loads. Both circuits can be switched in a sequence by using one switch or independently using separate switches. Load capacity: Dual (2) 120-277V Circuits at 5 Amps each load. Switch voltage: <5V (<.5, micro amps). Switch types: sequential (load 1,2, 1&2, off); individual (each load independently).

Labels

UL and cUL listed. Suitable for Dry or Damp Locations, indoor use only.

Lumen Maintenance

L70 at 50,000 hours.

Warranty

LED system rated for operation in ambient environments up to 25°C. 5 year limited warranty.

Finish

Polyester powder coat applied over a 5-stage pre-treatment. Optional Anti-Microbial paint finish available.

ORDERING

Luminaire Series	FRCL	FRCL
LED Patient Reading Companion		
Nominal Size	82	82
8" x 2'		
Faceplate Type	FF	FF
Flat Faceplate		
LED Function(s)		
(2) 5W Adjustable LED Reading Lights	2LRL	
(1) 5W Adjustable LED Reading Light with 2W Fixed Red/Orange (620nm) LED Night Light	LRLNL	
(1) 5W Adjustable LED Reading Light with 5W Adjustable LED Chart Light	LRLCL	
Circuit		
Single Circuit	1C	
Dual Circuit	2C	
Voltage		
120 Volt	120	
277 Volt	277	
Ceiling Configurations*		
Std. 15/16" Lay-in	G1	
Std. 15/16" Tegular	T1	
Std. 15/16" Tegular, against Tee	T1T	
Std. 9/16" Lay-in	G2	
Std. 9/16" Tegular	T2	
Std. 9/16" Tegular, against Tee	T2T	
9/16" Slot-tee Tegular	G3	
Tall 15/16" Lay-in	G4	
Tall 15/16" Tegular	T4	
Tall 15/16" Tegular, against Tee	T4T	
Tall 9/16" Lay-in	G5	
Tall 9/16" Tegular	T5	
Tall 9/16" Tegular, against Tee	T5T	
Node 9/16" Tegular	T6	
Node 9/16" Tegular, against Tee	T6T	
Drywall Frame Kit	F	
(Cut out dimensions: Min: 8.326"/Max: 8.639" Min: 24.250"/Max: 24.563")		
Factory Options		
Chicago Plenum	CP	
6' New York City Flex Whip	FNY	
6' Flex Whip	FW	
Low Voltage Controller*	LVC	
Finish		
Matte Satin White	WH	
Matte Satin White Anti-Microbial	WHA	