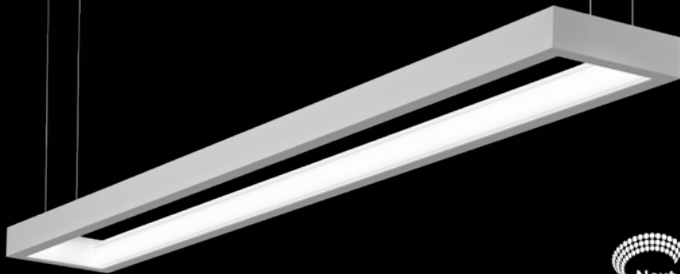


# Nera®

LED



bottom detail



inside lens detail



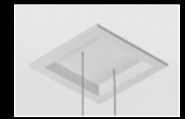
grid ceiling canopy



white finish

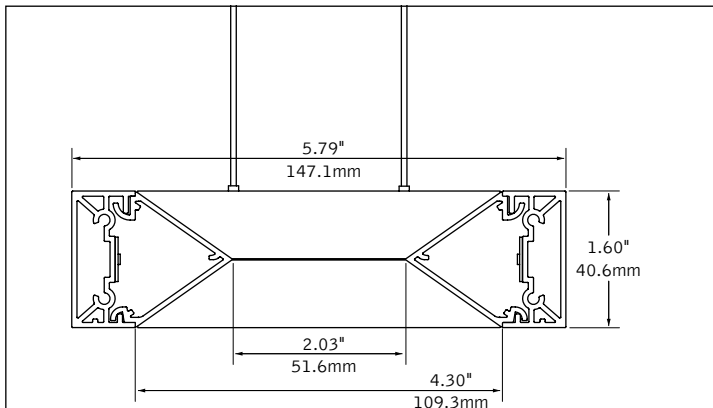


palladium finish

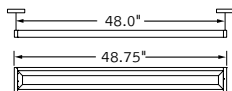


drywall canopy

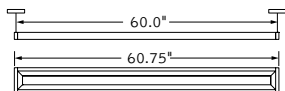
## DIMENSIONAL DATA



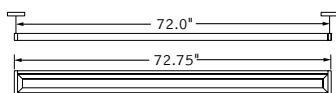
## fixture information



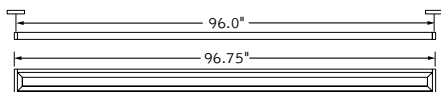
4'



5'



6'



8'

## FEATURES

Unique aesthetic inspired by the visual void design philosophy.

Luminaire lengths available in 4', 5', 6' and 8' lengths as well as continuous rows.

Frosted acrylic optical diffuser produces 40/60, 60/40 or 70/30 light distributions.

Features Power-Up suspension system which delivers power through the suspension cables and eliminates visual clutter of separate power cord.

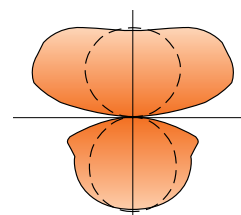
Installations include grid, drywall and surface-mount/open ceilings.

Choice of output levels to meet a wide variety of application needs.

Connected Solutions: Integrates with wired and wireless building lighting control systems.

PoE compatible: Integrates with Power over Ethernet lighting systems via standard, low-voltage wires.

## PERFORMANCE



4' - 1000 Lumens per foot  
**Delivered Lumens: 4000lm**  
**Total System Watts: 40W**

Photometric performance is measured in accordance with IESNA LM-79. Visit focalpointlights.com for complete photometric data.

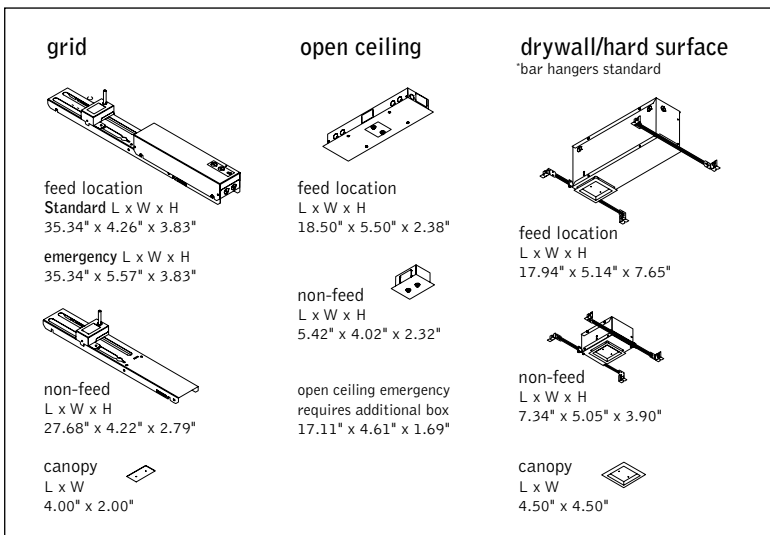
## PRODUCT OVERVIEW

Lumen Output:	2000-4000lm
Wattage:	18-38W
LPW:	106-115
SDCM:	3

fixture:

project:

**DETAILS**



**SPECIFICATIONS**

**LED System**

Linear LED module incorporates premium LEDs on a robust platform to achieve excellent thermal management. Available in 3000K, 3500K, 4000K with CRI>80, 3 SDCM.

**Construction**

Extruded aluminum rails with die-cast aluminum end-caps. 4' unit weight: 4.8lbs. 5' unit weight: 5.9lbs. 6' unit weight: 7.0lbs. 8' unit weight: 9.8lbs.

**Optic**

0.125" thick extruded acrylic lens.

**Mounting**

White satin acrylic canopies provided for below ceiling access. Canopies are field paintable. Minimum mounting height: 12"

**Suspension and Power**

Low voltage power delivered via aircraft suspension/power cable. Adjustable suspension to 96", consult factory for longer lengths. Drivers in sheet metal enclosure above ceiling or surface mount for open ceilings. Drivers are replaceable. Standard 120-277V constant current driver includes 0-10V analog dimming. Power factor > .9. PoE compatible: Integrates with Power over Ethernet lighting systems via standard, low-voltage wires. PoE runs require an independent PoE node and power feed for each luminaire section.

**Emergency**

Emergency Battery 10W output for 90 minutes. Maximum mounting height: 15ft. Emergency Circuit with Connected Solutions (NLT1, ENL1, CLM1, DLM1) shipped standard with leads to connect UL924 compliant device, by others.

**Labels**

UL and cUL listed. Suitable for Dry or Damp Locations, indoor use only.

**Finish**

Polyester powder coat applied over a multi-stage pre-treatment.

**Lumen Maintenance**

Reported: L90 at >36,000 hours      Calculated: L90 at 100,000 hours  
Derived from EPA TM-21 calculator. Based on typical conditions, consult factory for additional data.

**Reliability**

At Focal Point, our products are designed to stand the test of time. Each luminaire is engineered using superior components, manufactured with the utmost care and rigorously tested. Contact us for reliability data.

**Warranty**

LED system rated for operation in ambient environments up to 25°C. 5-year limited warranty.

**4' PERFORMANCE CHART**

Lumen Output	Delivered Lumens	System Watts		LPW	
		40/60	60/40 & 70/30	40/60	60/40 & 70/30
500LF	2000	18.1	17.7	110	114
625LF	2500	22.8	22.0	110	115
750LF	3000	27.6	26.6	109	114
875LF	3500	32.6	31.2	107	113
1000LF	4000	37.8	36.0	106	111

Lumen output may vary +/- 5%. Actual wattage may vary +/- 5%

Focal Point LLC reserves the right to change specifications for product improvement without notification.

**ORDERING**

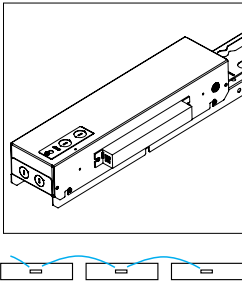
<b>Luminaire Series</b>	<b>FNRS</b>
Nera	FNRS
<b>Shielding</b>	
Frosted Lens -	
40 Indirect / 60 Direct Distribution	FL40
Frosted Lens -	
60 Indirect / 40 Direct Distribution	FL60
Frosted Lens -	
70 Indirect / 30 Direct Distribution	FL70
<b>Lumen Output</b>	
500 Lumens per foot	500LF
625 Lumens per foot	625LF
750 Lumens per foot	750LF
875 Lumens per foot <small>(Not available with D11 or NLT1)</small>	875LF
1000 Lumens per foot <small>(Not available with D11 or NLT1) (consult factory for higher light levels)</small>	1000LF
<b>Color Temperature</b>	
3000K	30K
3500K	35K
4000K	40K
<b>Circuits</b>	<b>1C</b>
Single Circuit	1C
<b>Voltage</b>	<b>UNV</b>
UNV 120/277 Volt	UNV
Low Voltage	LV
<b>Control System &amp; Dimming Level</b>	
0-10V - 1% Dimming	L11
0-10V - 10% Dimming	LD1
Low Voltage, PoE compatible <small>(No driver. Not available with EM or EC. LV Voltage only)</small>	LVN
<b>Lutron Hi-Lume EcoSystem (LDE1) -</b>	
1% Dimming	LH1
DALI - 1% Dimming <small>(Not available with 875 or 1000 Lumens.)</small>	D11
<b>Acuity nLight - 1% Dimming</b> <small>(Not available with CP. Grid only)</small>	NLT1
<b>Enlighted Smart Sensor - 1% Dimming</b> <small>(Remote mounted sensor. Grid only)</small>	ENL1
<b>Encelium CLM Connected Lighting Module - 1% Dimming</b> <small>(Grid only. Compatible with Encelium X Light Management System.)</small>	CLM1
<b>Wattstopper DLM - 1% Dimming</b> <small>(Grid only)</small>	DLM1
<b>Mounting</b>	
<b>Grid Accessible Ceiling</b> <small>(Consult factory for TechZone Ceilings.)</small>	G
<b>Drywall / Hard Surface</b> <small>(Not available with Emergency Battery)</small>	HS
<b>Open Ceiling</b>	OC
<b>Suspension and Power Feed</b> <small>(Adjustable aircraft cable with integral low voltage power delivery)</small>	
24" adjustable	CLV24
48" adjustable	CLV48
60" adjustable	CLV60
96" adjustable	CLV96
<b>Factory Options</b>	
<b>Clear Cable Slewing</b> <small>(May be required by local code)</small>	CCS
<b>Chicago Plenum</b> <small>(Not available with Open Ceiling mounting. CCS shipped standard with CP option)</small>	CP
<b>Emergency Circuit</b>	EC
<b>Emergency Battery</b> <small>(Test switch in canopy. Not available with HS mounting.)</small>	EM
<b>Finish</b>	
Palladium Silver	PS
White	WH
<b>Luminaire Run Length</b>	
4'	4'
5'	5'
6'	6'
8'	8'
<b>Run Configuration</b>	
all 4' housings	C4
all 5' housings	C5
all 6' housings	C6
all 8' housings	C8
<b>Mixed housing lengths</b>	M

(consult run guide on page 4 for standard configurations up to 48')

Ordering example: Specify both total Luminaire Run Length and a Run Configuration  
FNRS-FL60-625LF-35K-1C-UNV-LD1-G-CLV48-WH1-24-C8

For more information visit focalpointlights.com/reference or consult factory.

Focal Point provides flexibility in meeting the needs of each project by integrating with several building lighting control systems. A variety of sensors, drivers and other components can be specified that allow the luminaires to communicate with wired and wireless networks. All zoning can be digitally reconfigured through the application software. Daylight harvesting, occupancy sensing, integration with HVAC systems, and individual controls enable the monitoring and modulating of light levels and temperature in order to save energy, reduce costs and maximize occupants' comfort. All Connected Solutions luminaires require a compatible building control system.†



## nLIGHT

nLight<sup>®</sup> provides a two-way wired digital lighting system allowing for on/off and dimming functionality, occupancy sensing, and multi-zone daylight harvesting.

Acuity nLight - 1% Dimming (NLT1)  
Acuity Model #nEPS-60-IO

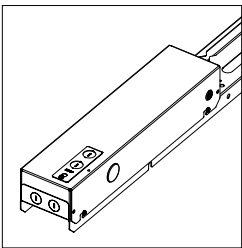
CAT-5 Cable provided by others. Serial labels will be provided on outside of luminaires and control unit.



## enlighted<sup>®</sup> A Siemens Company

Enlighted smart sensor allows for occupancy sensing, daylight harvesting (not suitable for Nera), energy usage, temperature and light level control. Communicates wirelessly with the Enlighted network.

Enlighted Smart Sensor - 1% Dimming (ENL1)  
Enlighted Model #SU-5E-IOT

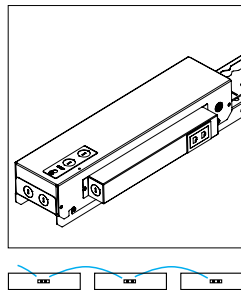


## ENCELIUM

Encelium's Connected Lighting Module (CLM) is fully compatible with the Encelium X Light Management System, as well as with 0-10V and DALI based LED drivers to allow for individual luminaire control, including on/off and dimming functionalities, occupancy sensing, and multi-zone daylight harvesting.

Encelium CLM - 1% Dimming (CLM1)  
Encelium Model #ZBHA-CLM-DIM-ENC

Serial labels will be provided on outside of luminaires and control unit.

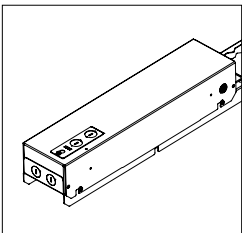


## legrand<sup>®</sup> WATTSTOPPER<sup>®</sup>

A Digital Lighting Management (DLM) system that provides two-way wired communication between networked luminaires and control system to allow for on/off and dimming functionality, occupancy sensing and multi-zone daylight harvesting.

Wattstopper DLM - 1% Dimming (DLM1)  
Wattstopper Model #LMFC-011

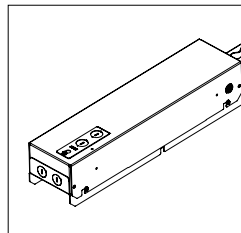
CAT-5 Cable provided by others. Serial labels will be provided on outside of luminaires and control unit.



## LUTRON<sup>®</sup>

A two-way digital network that enables on/off and dimming functionality, occupancy sensing, and multi-zone daylight harvesting working with Quantum<sup>™</sup>, Energi Savr Node<sup>™</sup>, and Energi TriPak<sup>™</sup> using EcoSystem<sup>®</sup> communication protocol.

Lutron Hi-Lume EcoSystem - 1% Dimming (LH1)  
Lutron Model #LDE1



## CRESTRON<sup>®</sup>

A two-way digital network that enables on/off and dimming functionality, occupancy sensing, and multi-zone daylight harvesting. Communicates with Züm wireless and SpaceBuilder working with Züm hub scheduling or FUSION management.

DALI - 1% Dimming (D11)  
0-10V - 1% Dimming (L11)

Note: 0-10V is not a digital network but is compatible with Creston Züm<sup>™</sup> system.

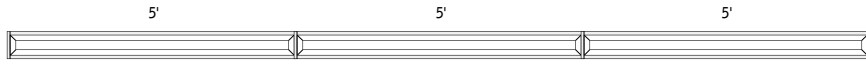
### CONNECTED SOLUTIONS DETAILS

Connected Solution	Model #	Protocol	Compatible Networks*	Occupancy	Daylight	Temperature Reporting	Communication to Luminaire	Drivers
Acuity nLight (NLT1)	nEPS-60-IO**	nLight	nLight	Enabled	Enabled	No	Wired	<b>eldoLED ECoDrive</b> , eldoLED SOLOdrive
Crestron (D11, L11)	Specified Driver	DALI 0-10V	Crestron Züm Wireless & SpaceBuilder	Enabled	Enabled	No	Wired	<b>eldoLED ECoDrive (DALI)</b> , <b>Advance by Signify (0-10V)</b>
Enlighted Smart Sensor (ENL1)	SU-5E-IOT**	Enlighted RF	Enlighted	Integrated	Not suitable	Yes	Wireless	<b>Advance by Signify</b>
Legrand Wattstopper DLM (DLM1)	LMFC-011**	DLM	DLM	Enabled	Enabled	No	Wired	<b>Advance by Signify</b>
Lutron EcoSystem (LH1)	LDE1**	EcoSystem	Quantum, Energi Savr Node, Energi TriPak	Enabled	Enabled	No	Wired	<b>Lutron Hi-Lume</b>
Encelium CLM Connected Lighting Module (CLM1)	ZBHA-CLM-DIM-ENC*	ZigBee	Encelium X Light Management System	Enabled	Enabled	No	Wireless	<b>Optotronic by eldoLED</b> Advance by Signify

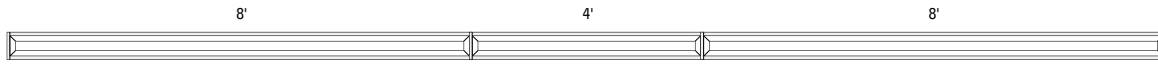
\*Not all compatible networks may be listed. \*\*For performance data and additional control system details please visit the connected solutions manufacturer websites. Primary drivers are listed in bold. To specify a particular driver please consult factory.  
†Controls systems supplied by others.

## RUN GUIDE

### EXAMPLE 15' RUN - FNRS-FL60-625LF-35K-1C-UNV-LD1-G-CLV48-WH-15-C5



### EXAMPLE 20' RUN - FNRS-FL60-625LF-35K-1C-UNV-LD1-G-CLV48-WH-20-M



#### STANDARD RUNS

Luminaire Run Length (ft)	Run Configuration	Run Configuration Code
4	4'	C4
5	5'	C5
6	6'	C6
8	8'	C8
12	8' + 4'	M
16	8' + 8'	C8
20	8' + 4' + 8'	M
24	8' + 8' + 8'	C8
30	8' + 8' + 8' + 6'	M
32	8' + 8' + 8' + 8'	C8
36	8' + 8' + 8' + 8' + 4'	M
40	8' + 8' + 8' + 8' + 8'	C8
44	8' + 8' + 8' + 8' + 8' + 4'	M
48	8' + 8' + 8' + 8' + 8' + 8'	C8

#### NON- STANDARD RUNS

Luminaire Run Length (ft)	Run Configuration	Run Configuration Code
8	4' + 4'	C4
10	5' + 5'	C5
12	4' + 4' + 4'	C4
12	6' + 6'	C6
14	8' + 6'	M
15	5' + 5' + 5'	C5
16	4' + 4' + 4' + 4'	C4
18	6' + 6' + 6'	C6
20	4' + 4' + 4' + 4' + 4'	C4
20	5' + 5' + 5' + 5'	C5
24	4' + 4' + 4' + 4' + 4' + 4'	C4
24	6' + 6' + 6' + 6'	C6
25	5' + 5' + 5' + 5' + 5'	C5
28	4' + 4' + 4' + 4' + 4' + 4' + 4'	C4
28	8' + 6' + 6' + 8'	M
30	5' + 5' + 5' + 5' + 5' + 5'	C5
30	6' + 6' + 6' + 6' + 6'	C6
32	4' + 4' + 4' + 4' + 4' + 4' + 4' + 4'	C4
35	5' + 5' + 5' + 5' + 5' + 5'	C5
36	4' + 4' + 4' + 4' + 4' + 4' + 4' + 4' + 4'	C4
36	6' + 6' + 6' + 6' + 6' + 6'	C6
38	8' + 8' + 8' + 8' + 6'	M
40	4' + 4' + 4' + 4' + 4' + 4' + 4' + 4' + 4' + 4'	C4
40	5' + 5' + 5' + 5' + 5' + 5' + 5' + 5'	C5
42	6' + 6' + 6' + 6' + 6' + 6' + 6'	C6
44	4' + 4' + 4' + 4' + 4' + 4' + 4' + 4' + 4' + 4' + 4'	C4
45	5' + 5' + 5' + 5' + 5' + 5' + 5' + 5'	C5
46	8' + 8' + 8' + 8' + 8' + 6'	M
48	4' + 4' + 4' + 4' + 4' + 4' + 4' + 4' + 4' + 4' + 4' + 4'	C4
48	6' + 6' + 6' + 6' + 6' + 6' + 6' + 6'	C6
>48	Consult Factory	Consult Factory