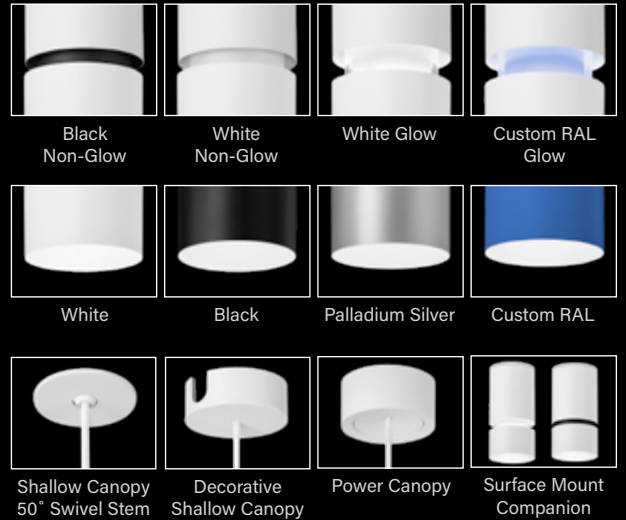
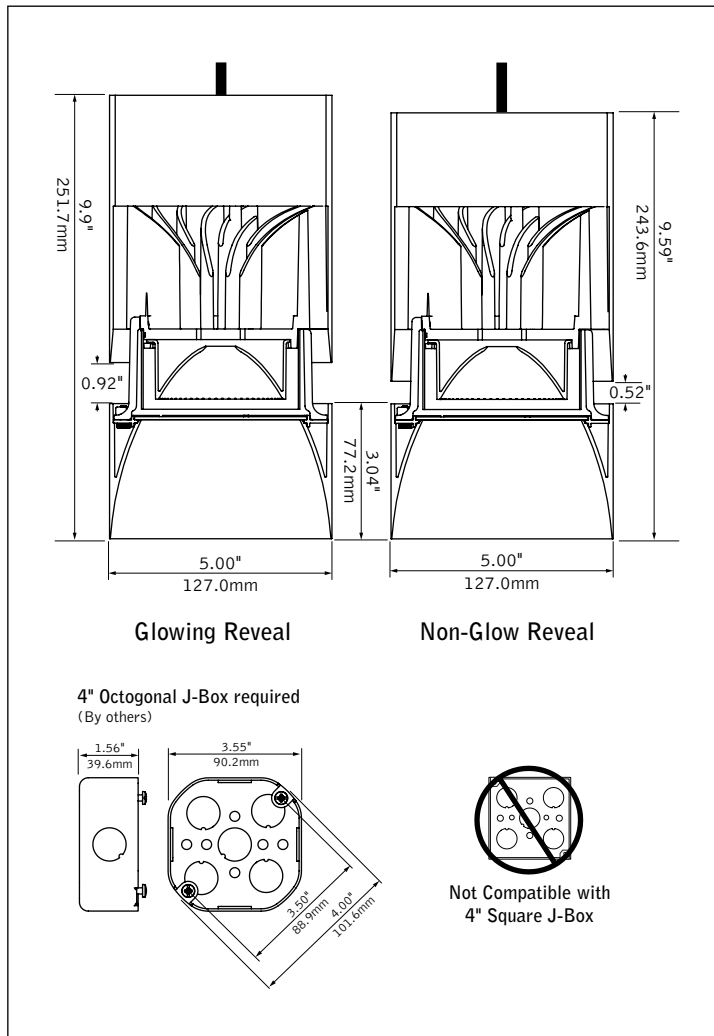


ID+ 4.5" Cylinder

LED PENDANT WITH DECORATIVE REVEAL



DIMENSIONAL DATA (continued on page 3 & 4)



FEATURES

4.5" cylinder pendant with decorative reveal; glow or non-glow options.

Custom color options for finish and glowing reveal.

One-piece die-cast reflector with a knife edge for a modern aesthetic.

50° cut-off for brightness control and visual comfort.

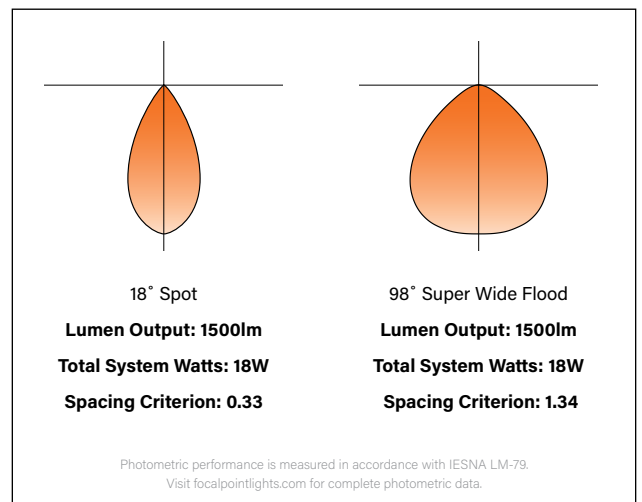
Multiple canopy options enable various driver offerings and conduit installations while maintaining premier aesthetics.

Power cord, fixed and swivel stem suspension mounting options.

Warm Dim: Lighting that enhances spaces with a warm glow, reminiscent of incandescent or halogen light sources.

PoE compatible: Integrates with Power over Ethernet lighting systems via standard, low-voltage wires.

PERFORMANCE



fixture:

project:

SPECIFICATIONS

LED System

Proprietary LED module with single light emitting source. May be specified in 2700K, 3000K, 3500K or 4000K in CRI>80 or CRI>90. 3500K and 4000K with CRI>90 have a cyanosis observation index (COI) of 3.3 or less. Color accuracy within 2 SDCM. Aluminum heat sink provides appropriate thermal management.

Construction

Upper housing is extruded aluminum. Lower reflector is die-cast aluminum. Twist & lock construction leaves no visible fasteners within the knife edge trim. Fixture will not exceed 5 lb.

Optics

Beam spreads achieved with optics that may be easily changed in field.

Lumen Output	Cut-Off Degree	Distribution Beam Spread Spacing Criteria					
		SP	NFL	FL	WFL	VWFL	SWFL
1000 - 1500	50°	18° 0.33	27° 0.48	35° 0.59	54° 0.83	69° 1.02	—
	80°	—	—	—	—	—	98° 1.34
2000 - 3000	50°	—	26° 0.44	41° 0.67	56° 0.83	69° 1.08	—
	80°	—	—	—	—	—	98° 1.34

Electrical

Choice of constant current dimming drivers. Power factor > .9 typical. PoE compatible: Integrates with Power over Ethernet lighting systems via standard, low-voltage wires. L11 & LFP with Shallow Canopy, Integral Driver not Right Light as standard, consult factory.

Emergency

Emergency output — 7W for 90 minutes. Maximum mounting height: 16ft. J-box cannot be recessed above the ceiling with Emergency Battery.

Labels

UL and cUL listed. Suitable for Dry or Damp Locations, indoor use only.

Finish

Polyester powder coat applied over a multi-stage pre-treatment. Swivel stem option is designed with a matching cylinder, swivel stem, and canopy finish.

Lumen Maintenance

Reported: L70 > 60,000 hours

Calculated: L70 at > 204,000 hours

L80 > 60,000 hours

L80 at > 126,000 hours

(Derived from EPA TM-21 calculator. Based on typical conditions, consult factory for additional data.)



Reliability

At Focal Point, our products are designed to stand the test of time. Each luminaire is engineered using superior components, manufactured with the utmost care and rigorously tested. Contact us for reliability data.

Warranty

LED system rated for operation in ambient environments up to 25°C. 5 year limited warranty.

PERFORMANCE TABLE

Lumen Output	Delivered Lumens	System Watts	LPW
1000L	1033	11	91
1500L	1509	18	86
 1500L	1606	23	69
2000L	2074	24	88
2500L	2609	31	84
 2500L	2211	35	63
3000L	2906	34	84

Glowing Reveal, 3500K, 80CRI, Clear Diffuse, Flood distribution.Warm Dim based on 3000 - 1800K, 90 CRI. Lumen output may vary +/- 5%. Actual wattage may vary +/- 5%.

Options in orange qualify for the Quickship program. 10-day up to 50 pieces. Refer to Quickship Guide for complete details.

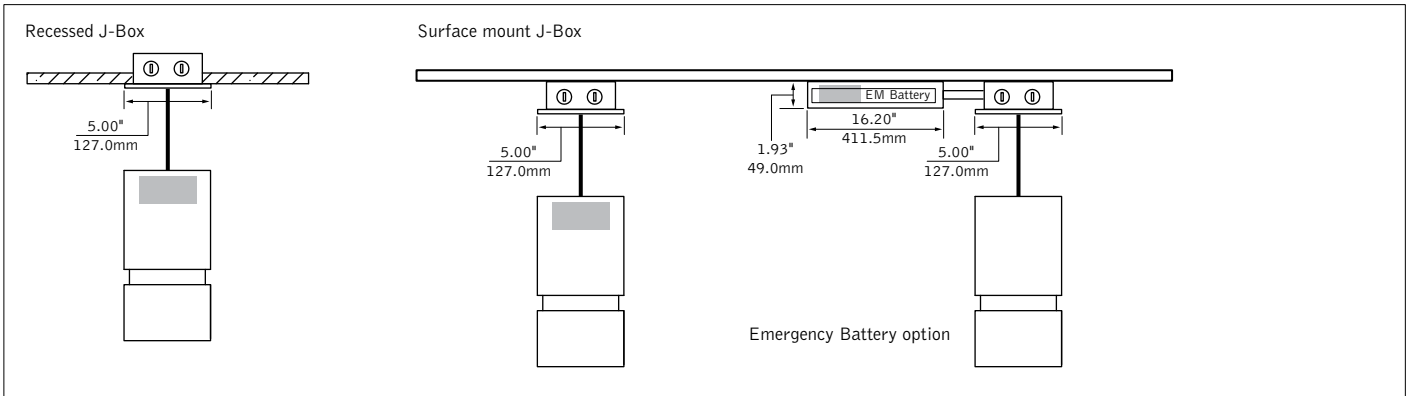
Focal Point LLC reserves the right to change specifications for product improvement without notification.

ORDERING			FLCY4
Luminaire Series			
ID+ 4.5" Round Cylinder	FLCY4		
Trim Type		RD	RD
Round			
Decorative Reveal			
White Non-Glow Reveal		WHR	
Black Non-Glow Reveal		BKR	
White Glowing Reveal		WHG	
Custom Color Glowing Reveal		RAL_ _ _ _	
(Specify your RAL color value. Extended lead time consult factory.)			
Lumen Output			
1000 Lumens		1000L	
1500 Lumens		1500L	
2000 Lumens		2000L	
2500 Lumens		2500L	
3000 Lumens (PC & DPC only)		3000L	
Color Temperature			
2700K, 80+ CRI or 90+ CRI		27K or 927K	
3000K, 80+ CRI or 90+ CRI		30K or 930K	
3500K, 80+ CRI or 90+ CRI		35K or 935K	
4000K, 80+ CRI or 90+ CRI		40K or 940K	
Warm Dim: 2700-1800K, 90+ CRI		92718W	
Warm Dim: 3000-1800K, 90+ CRI		93018W	
(Warm Dim:1500L & 2500L only. EMR not available. 2500L PC & DPC only.)			
Circuit			1C
Single Circuit		1C	
Voltage			
120/277 UNV		UNV	
120 Volt		120	
277 Volt		277	
Low Voltage		LV	
Canopy Configuration			
Shallow Canopy, Integral Driver*		SC	
Shallow Canopy with decorative J-box cover, Integral Driver*		DSC	
*(L11, LVN & LFP only. Warm Dim: 1500L only.)			
Power Canopy		PC	
Power Canopy with decorative J-box cover		DPC	
Control System & Dimming Level			
0-10V - 0% Dimming		LZ1	
0-10V - 1% Dimming		L11	
Low Voltage, PoE compatible		LVN	
(No driver. Not available with EMR. SC or DSC with LV Voltage only.)			
Phase Dimming			LFP
(SC with 120V only. Consult factory for recommended dimmers.)			
Lutron Hi-Lume EcoSystem (LDE1) -			
1% Dimming		LH1	
Lutron Hi-Lume - Forward Phase -			
1% Dimming (120V only, 1000L only.)		LTE	
DALI - 0% Dimming		DZ1	
DALI - 1% Dimming		D11	
Mounting			
72" Cable, Straight Feed (Cut in field)		C72	
144" Cable, Straight Feed (Cut in field)		C144	
12", 50° Swivel Stem		B12	
18", 50° Swivel Stem		B18	
2'- 8' in 1' increments, 50° Swivel Stem		B_	
(Specify in inches, example: 8' stem = B96)			
12", Fixed Stem		S12	
18", Fixed Stem		S18	
2'- 8' in 1' increments, Fixed Stem		S_	
(Specify in inches, example: 8' stem = S96)			
Optic			
50° Cut-off Cone		DNT	
(Not available with SWFL distribution)			
50° Cut-off Cone with Solite Lens		DNTS	
(NFL distribution only)			
80° Cut-off Cone		DSS	
(SWFL distribution only)			
Distribution			
Spot		SP	
(1000L & 1500L only)			
Narrow Flood		NFL	
Flood		FL	
Wide Flood		WFL	
Very Wide Flood		VWFL	
Super Wide Flood		SWFL	
Factory Options			
Emergency Battery		EMR	
(J-box cannot be recessed above the ceiling. Remote test switch.)			
Reflector Color			CD
Clear Diffuse		CD	
Luminaire Finish			
(Cylinder, swivel stem and canopy finish match)			
Black with Black cord		BK	
White with White cord		WH	
Palladium Silver with Black cord		PS	
Custom Color with White cord			
(Specify your RAL color value. Extended lead time consult factory.)			RAL_ _ _ _

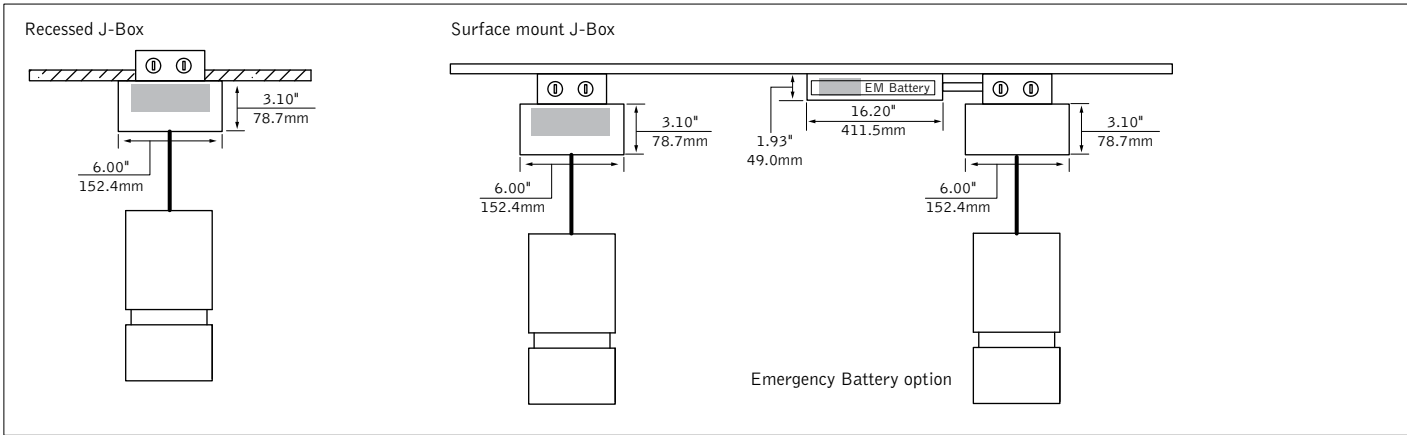
DIMENSIONAL DATA CONTINUED

SC - Shallow Canopy, Integral Driver

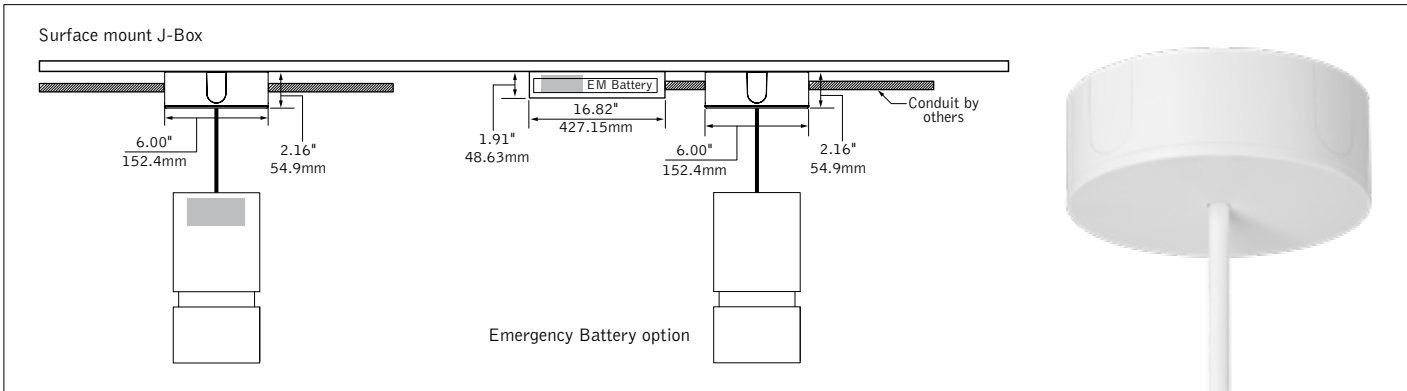
Indicates Driver Location



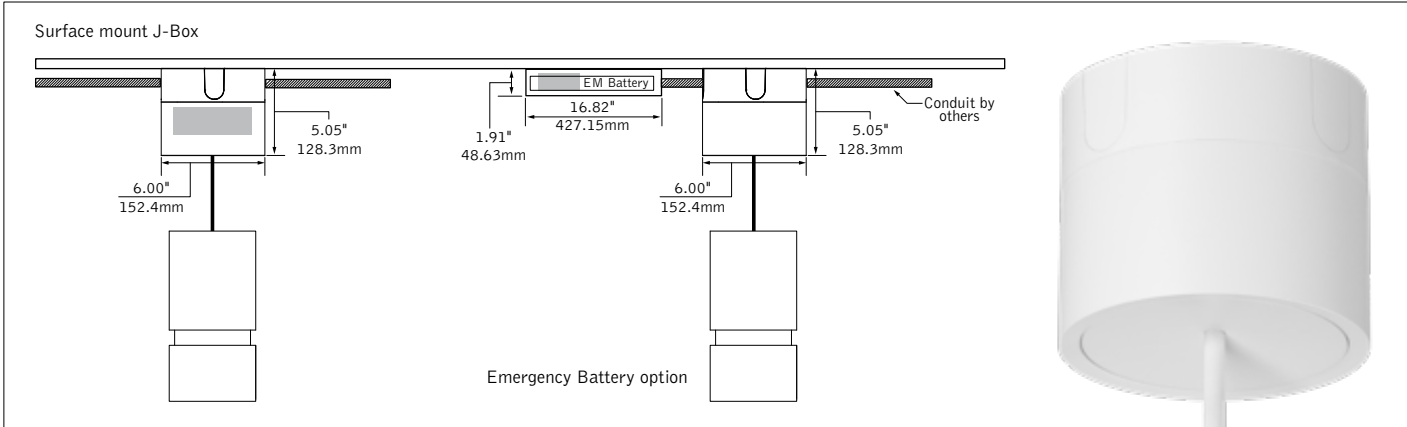
PC - Power Canopy



DSC - Shallow Canopy with decorative J-box cover, Integral Driver



DPC - Power Canopy with decorative J-box cover



4.5" CYLINDER LUMEN MULTIPLIER TABLE

Decorative Reveal

Trim Type	Optic	Decorative Reveal	Multiplier
Round [RD]	ALL	White Non-Glow Reveal [WHR]	0.94
		Black Non-Glow Reveal [BKR]	0.94
		White Glowing Reveal [WHG]	1.00

Color Temperature & CRI

Trim Type	Optic	Lumen Output	Color Temperature	Multiplier
Round [RD]	ALL		2700K, 80+ CRI [27K]	0.93
			2700K, 90+ CRI [927K]	0.78
			3000K, 80+ CRI [30K]	0.97
			3000K, 90+ CRI [930K]	0.81
			3500K, 80+ CRI [35K]	1.00
			3500K, 90+ CRI [935K]	0.83
			4000K, 80+ CRI [40K]	1.01
			4000K, 90+ CRI [940K]	0.86
		1500	2700-1800K, 90+ CRI [92718W]	0.76
		2500		0.90
		1500	3000-1800K, 90+ CRI [93018W]	1.07
		2500		0.88

Optic & Distribution (1000L - 1500L)

Trim Type	Optic	Distribution	Multiplier
Round [RD]	Tall Cone, 50° cut-off [DNT]	Spot (18°) [SPL]	1.00
		Narrow Flood (27°) [NFL]	0.97
		Flood (35°) [FL]	0.93
		Wide Flood (54°) [WFL]	1.00
		Very Wide Flood (69°) [VWFL]	0.93
	Tall Cone, 50° cut-off with Solite Lens [DNTS]	Narrow Flood (27°) [NFL]	1.00
	Super Short Cone, 80° cut-off [DSS]	Super Wide Flood (98°) [SWFL]	0.85

Optic & Distribution (2000L - 3000L)

Trim Type	Optic	Distribtuon	Multiplier
Round [RD]	Tall Cone, 50° cut-off [DNT]	Narrow Flood (26°) [NFL]	0.98
		Flood (41°) [FL]	0.92
		Wide Flood (56°) [WFL]	1.00
		Very Wide Flood (69°) [VWFL]	0.89
	Tall Cone, 50° cut-off with Solite Lens [DNTS]	Narrow Flood (26°) [NFL]	1.11
	Super Short Cone, 80° cut-off [DSS]	Super Wide Flood (98°) [SWFL]	0.83

Multiplier tables are provided to aid with estimation of lumen levels across options. Apply multipliers against ordered Lumen Output to estimate Delivered Lumens. Refer to IES files for most accurate photometric information.

How To Use Lumen Multipliers

Formula: (Lumen Output Value) x (Decorative Reveal) x (Color Temperature & CRI) x (Optic & Distribution)

Example: FLCY4-RD-WHR-1000L-935K-DNT-FL
(1000) x (0.94) x (0.83) x (0.93) ≈ 726 lm (estimated delivered lumens)

NON-SCALLOPING SUPER WIDE FLOOD DESIGN GUIDE - 1500 LUMEN EXAMPLE

Distance from bottom of fixture	Footcandles											
	Fixtures 3' from Wall						Fixtures 3.5' from Wall					
	3' OC			3.5' OC			3' OC			3.5' OC		
0' - 1'	3"	3	3	3	2	2	2	2	2	2	2	2
	6"	3	3	3	3	3	3	3	3	2	2	2
	9"	4	4	4	4	4	3	3	3	3	3	3
	12"	5	5	5	5	5	4	4	4	4	4	4
2'		13	13	13	11	11	11	9	9	9	8	8
3'		21	21	21	18	18	18	16	16	16	14	14
4'		24	24	24	20	20	20	20	20	20	17	17
5'		22	22	22	19	19	19	21	21	21	18	18
6'		19	19	19	16	16	16	19	19	19	16	16
7'		16	16	16	14	14	14	17	17	17	14	14
8'		14	14	14	12	12	12	14	14	14	12	12
9'		12	12	12	10	10	10	12	12	12	11	11
10'		10	10	10	8	8	8	10	10	10	9	9

