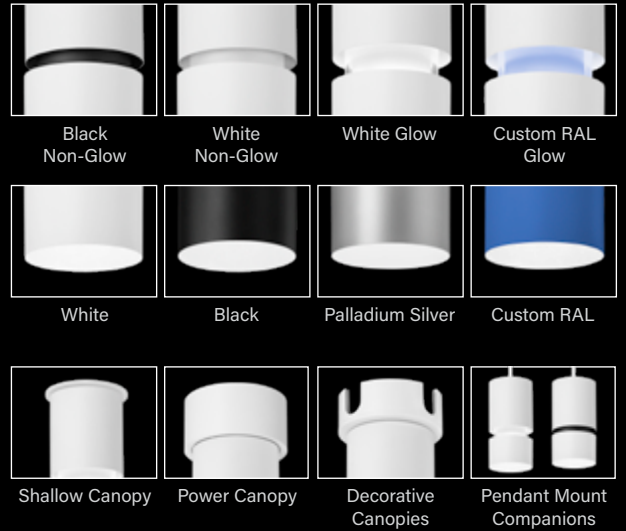


ID+ 4.5" Cylinder

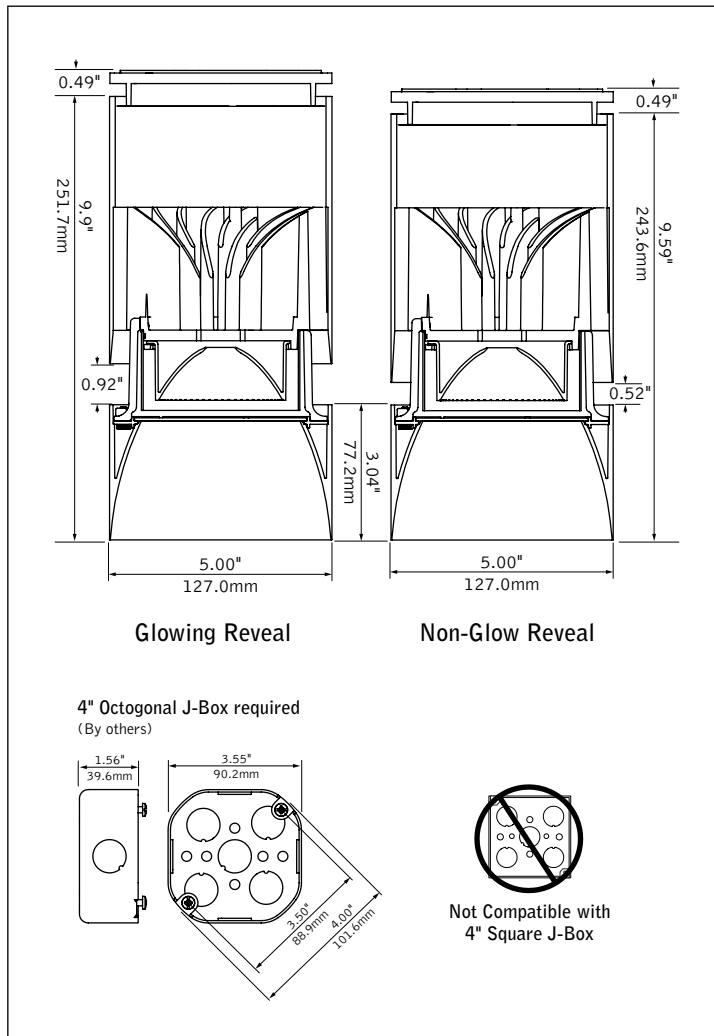
LED SURFACE MOUNT WITH DECORATIVE REVEAL



The Naturals collection - White/Chestnut shown



DIMENSIONAL DATA (continued on page 3 & 4)



FEATURES

4.5" cylinder pendant with decorative reveal; glow or non-glow options.

One-piece die-cast reflector with a knife edge for a modern aesthetic.

50° cut-off for brightness control and visual comfort.

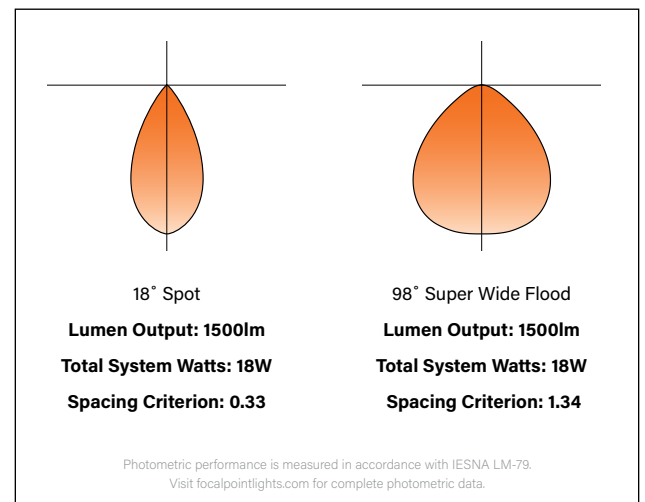
Multiple canopy options enable various driver offerings and conduit installations while maintaining premier aesthetics.

Available with The Naturals, a series of finishes that exude biophilic beauty.

Warm Dim: Lighting that enhances spaces with a warm glow, reminiscent of incandescent or halogen light sources.

PoE compatible: Integrates with Power over Ethernet lighting systems via standard, low-voltage wires.

PERFORMANCE



project:

SPECIFICATIONS

LED System

Proprietary LED module with single light emitting source. May be specified in 2700K, 3000K, 3500K or 4000K in CRI>80 or CRI>90. 3500K and 4000K with CRI>90 have a cyanosis observation index (COI) of 3.3 or less. Color accuracy within 2 SDCM. Aluminum heat sink provides appropriate thermal management.

Construction

Upper housing is extruded aluminum. Lower reflector is die-cast aluminum. Twist & lock construction leaves no visible fasteners within the knife edge trim. Fixture will not exceed 5 lb.

Optics

Beam spreads achieved with optics that may be easily changed in field.

Lumen Output	Cut-Off Degree	Distribution Beam Spread Spacing Criteria					
		SP	NFL	FL	WFL	VWFL	SWFL
1000 - 1500	50°	18° 0.33	27° 0.48	35° 0.59	54° 0.83	69° 1.02	—
	80°	—	—	—	—	—	98° 1.34
2000 - 3000	50°	—	26° 0.44	41° 0.67	56° 0.83	69° 1.08	—
	80°	—	—	—	—	—	98° 1.34

Electrical

Choice of constant current dimming drivers. Power factor > .9 typical. PoE compatible: Integrates with Power over Ethernet lighting systems via standard, low-voltage wires. Not Right Light as standard, consult factory.

Emergency

Emergency output — 7W for 90 minutes. Maximum mounting height: 16ft.
J-box cannot be recessed above the ceiling with Emergency Battery.

Labels

UL and cUL listed. Suitable for Dry, Damp, or Wet Locations, indoor use only.

Finish

Polyester powder coat applied over a multi-stage pre-treatment. The Naturals: 100% low VOC vinyl.

Lumen Maintenance

Reported: L70 > 60,000 hours
L80 > 60,000 hours
(Derived from EPA TM-21 calculator. Based on typical conditions, consult factory for additional data.)

Reliability

At Focal Point, our products are designed to stand the test of time. Each luminaire is engineered using superior components, manufactured with the utmost care and rigorously tested. Contact us for reliability data.

Warranty

LED system rated for operation in ambient environments up to 25°C. 5 year limited warranty.

PERFORMANCE TABLE

	Lumen Output	Delivered Lumens	System Watts	LPW
	1000L	1033	11	91
	1500L	1509	18	86
WD	1500L	1606	23	69
	2000L	2074	24	88
	2500L	2609	31	84
	3000L	2906	34	84

Glowing Reveal, 3500K, 80CRI, Clear Diffuse, Flood distribution. Warm Dim based on 3000 - 1800K, 90 CRI.
Lumen output may vary +/- 5%. Actual wattage may vary +/- 5%.

ORDERING

Luminaire Series		FLCY4	FLCY4
ID+ 4.5" Round Cylinder			
Trim Type			RD
Round		RD	
Decorative Reveal			
White Non-Glow Reveal		WHR	
Black Non-Glow Reveal		BKR	
White Glowing Reveal		WHG	
Custom Color Glowing Reveal ¹		RAL_ _ _ _	
Lumen Output			
1000 Lumens		1000L	
1500 Lumens		1500L	
2000 Lumens		2000L	
2500 Lumens		2500L	
3000 Lumens (PC & DPC Only)		3000L	
Color Temperature			
2700K, 80+ CRI or 90+ CRI		27K or 927K	
3000K, 80+ CRI or 90+ CRI		30K or 930K	
3500K, 80+ CRI or 90+ CRI		35K or 935K	
4000K, 80+ CRI or 90+ CRI		40K or 940K	
Warm Dim: 2700-1800K, 90+ CRI		92718W	
Warm Dim: 3000-1800K, 90+ CRI (Warm Dim: 1500L only, EMR not available)		93018W	
Single Circuit		1C	
Voltage			
120/277 UNV		UNV	
120 Volt		120	
277 Volt		277	
Low Voltage		LV	
Canopy Configuration			
(BK and WH finish by default, see finishes page for details. Optional Naturals finishes may be specified for Shallow Canopy (SC) and Power Canopy (PC) by adding the finish color to the canopy code. For example: Shallow Canopy in Light Oak = SCLQOK.)			
Shallow Canopy, Integral Driver*		SC	
Shallow Canopy with decorative* J-box cover, Integral Driver		DSC	
Power Canopy		PC	
Power Canopy with decorative J-box cover		DPC	
Control System & Dimming Level			
0-10V - 0% Dimming		LZ1	
0-10V - 1% Dimming		L11	
Low Voltage, PoE compatible (No driver. Not available with EMR. SC or DSC with LV Voltage only.)		LVN	
Phase Dimming (SC with 120V only. Consult factory for recommended dimmers.)		LFP	
Lutron Hi-Lume EcoSystem (LDE1) - 1% Dimming		LH1	
DALI - 0% Dimming		DZ1	
DALI - 1% Dimming		D11	
Mounting			SM
Surface Mount		SM	
Optic			
50° Cut-off Cone (Not available with SWFL)		DNT	
50° Cut-off Cone with Solite Lens (NFL only)		DNTS	
80° Cut-off Cone (SWFL only)		DSS	
Distribution			
Spot (1000L & 1500L only)		SP	
Narrow Flood		NFL	
Flood		FL	
Wide Flood		WFL	
Very Wide Flood		VWFL	
Super Wide Flood		SWFL	
Factory Options			
Emergency Battery		EMR	
(J-box cannot be recessed above the ceiling. Remote test switch.)			
Reflector Color			CD
Clear Diffuse		CD	
Luminaire Finish			
Upper Housing Finish			
Lower Housing Finish			
Specify an upper and lower housing finish. See finishes page for The Naturals options and standard color combinations for cylinder, cord/stem, and canopy.		Black White Palladium Silver Custom Color ¹	BK WH PS RAL

¹(Specify your RAL code. Extended lead time. Consult factory.)

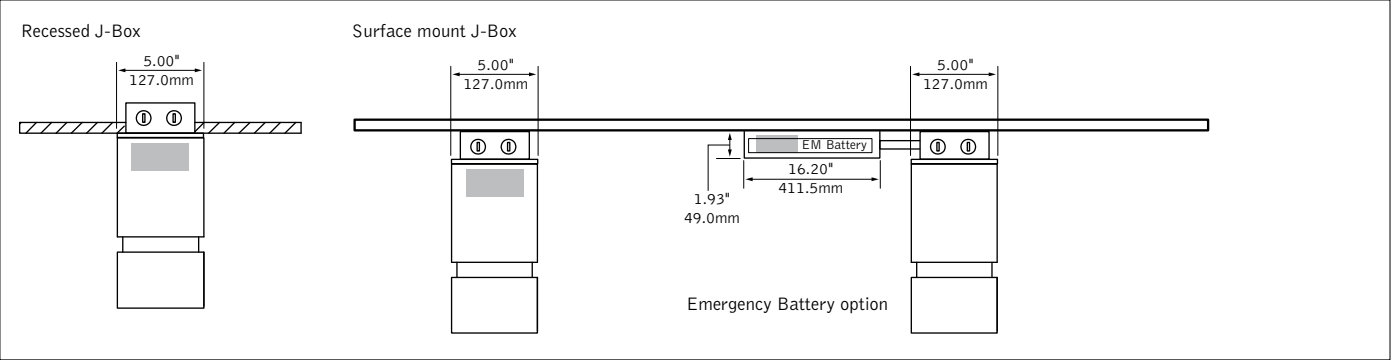


Options in orange qualify for the Quickship program. 10-day up to 50 pieces. Refer to Quickship Guide for complete details.

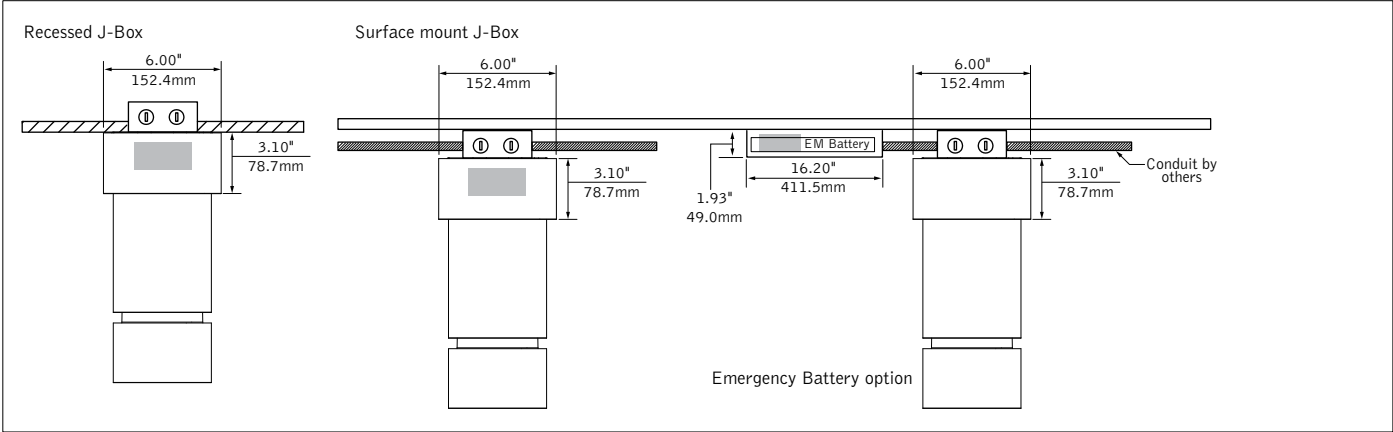
DIMENSIONAL DATA CONTINUED

SC - Shallow Canopy, Integral Driver

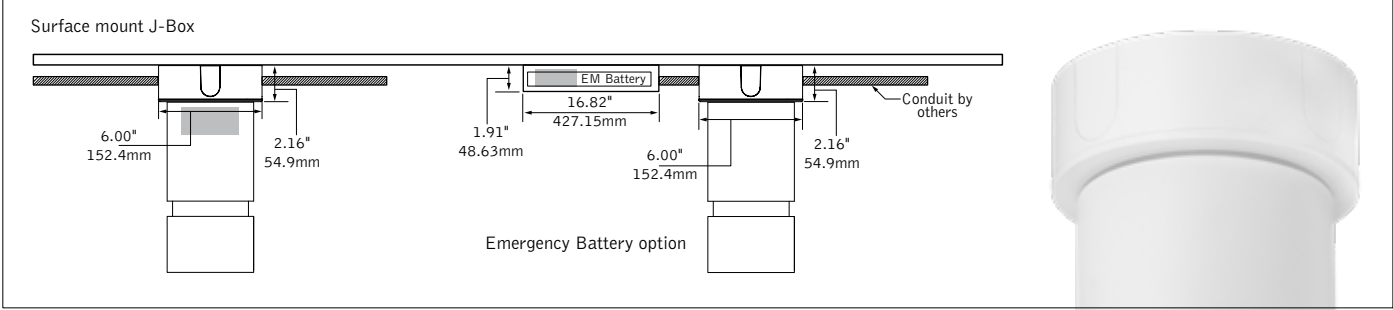
Indicates Driver Location



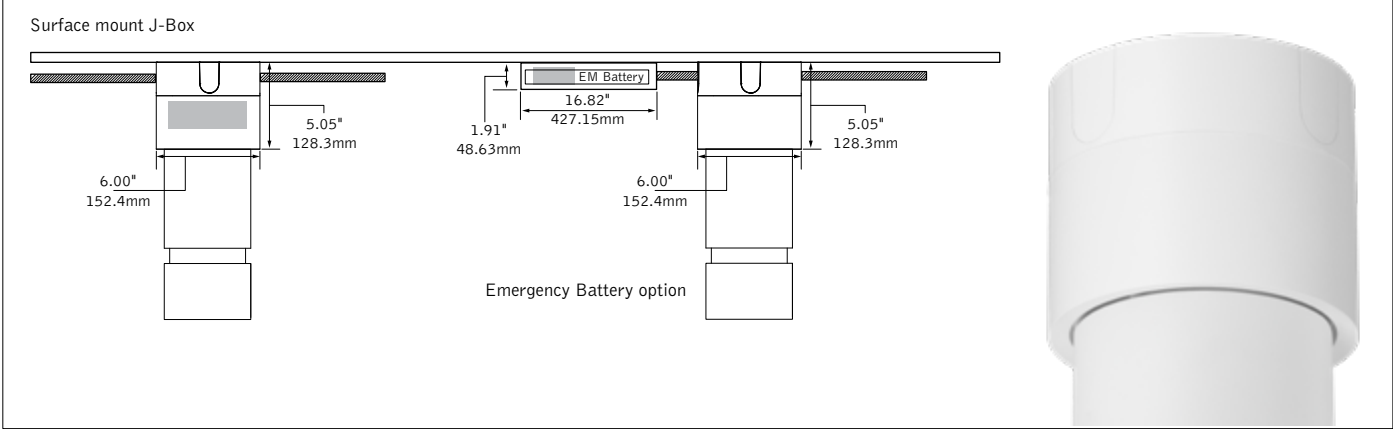
PC - Power Canopy



DSC - Shallow Canopy with decorative J-box cover, Integral Driver



DPC - Power Canopy with decorative J-box cover



4.5" CYLINDER LUMEN MULTIPLIER TABLE

Decorative Reveal

Trim Type	Optic	Decorative Reveal	Multiplier
Round [RD]	ALL	White Non-Glow Reveal [WHR]	0.94
		Black Non-Glow Reveal [BKR]	0.94
		White Glowing Reveal [WHG]	1.00

Color Temperature & CRI

Trim Type	Optic	Lumen Output	Color Temperature	Multiplier
Round [RD]	ALL	ALL	2700K, 80+ CRI [27K]	0.93
			2700K, 90+ CRI [927K]	0.78
			3000K, 80+ CRI [30K]	0.97
			3000K, 90+ CRI [930K]	0.81
			3500K, 80+ CRI [35K]	1.00
			3500K, 90+ CRI [935K]	0.83
			4000K, 80+ CRI [40K]	1.01
			4000K, 90+ CRI [940K]	0.86
		1500	2700-1800K, 90+ CRI [92718W]	0.76
		1500	3000-1800K, 90+ CRI [93018W]	1.07

Optic & Distribution (1000L - 1500L)

Trim Type	Optic	Distribution	Multiplier
Round [RD]	Tall Cone, 50° cut-off [DNT]	Spot (18") [SPL]	1.00
		Narrow Flood (27") [NFL]	0.97
		Flood (35") [FL]	0.93
		Wide Flood (54") [WFL]	1.00
		Very Wide Flood (69") [VWFL]	0.93
	Tall Cone, 50° cut-off with Solite Lens [DNTS]	Narrow Flood (27") [NFL]	1.00
	Super Short Cone, 80° cut-off [DSS]	Super Wide Flood (98") [SWFL]	0.85

Optic & Distribution (2000L - 3000L)

Trim Type	Optic	Distribtuon	Multiplier
Round [RD]	Tall Cone, 50° cut-off [DNT]	Narrow Flood (26") [NFL]	0.98
		Flood (41") [FL]	0.92
		Wide Flood (56") [WFL]	1.00
		Very Wide Flood (69") [VWFL]	0.89
	Tall Cone, 50° cut-off with Solite Lens [DNTS]	Narrow Flood (26") [NFL]	1.11
	Super Short Cone, 80° cut-off [DSS]	Super Wide Flood (98") [SWFL]	0.83

Multiplier tables are provided to aid with estimation of lumen levels across options. Apply multipliers against ordered Lumen Output to estimate Delivered Lumens. Refer to IES files for most accurate photometric information.

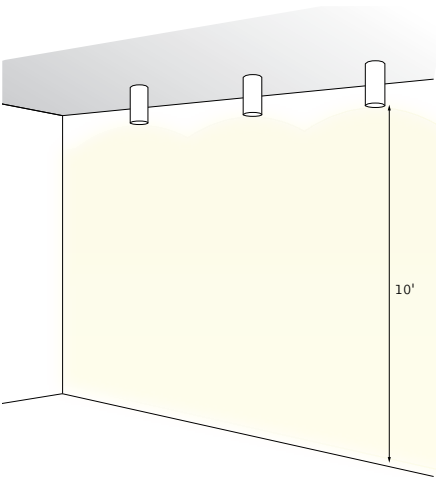
How To Use Lumen Multipliers

Formula: (Lumen Output Value) x (Decorative Reveal) x (Color Temperature & CRI) x (Optic & Distribution)

Example: FLCY4-RD-WHR-1000L-935K-DNT-FL
(1000) x (0.94) x (0.83) x (0.93) ≈ 726 lm (estimated delivered lumens)

NON-SCALLOPING SUPER WIDE FLOOD DESIGN GUIDE - 1500 LUMEN EXAMPLE

Distance from bottom of fixture	Footcandles											
	Fixtures 3' from Wall				Fixtures 3.5' from Wall				Fixtures 4' from Wall			
	3' OC		3.5' OC		3' OC		3.5' OC		3' OC		3.5' OC	
1.0'	3"	3	3	3	2	2	2	2	2	2	2	2
	6"	3	3	3	3	3	3	2	2	2	2	2
	9"	4	4	4	4	4	4	3	3	3	3	3
	12"	5	5	5	5	5	5	4	4	4	3	3
2'		13	13	13	11	11	11	9	9	9	8	8
3'		21	21	21	18	18	18	16	16	16	14	14
4'		24	24	24	20	20	20	20	20	20	17	17
5'		22	22	22	19	19	19	21	21	21	18	18
6'		19	19	19	16	16	16	19	19	19	16	16
7'		16	16	16	14	14	14	17	17	17	14	14
8'		14	14	14	12	12	12	14	14	14	12	12
9'		12	12	12	10	10	10	12	12	12	11	11
10'		10	10	10	8	8	8	10	10	10	9	9



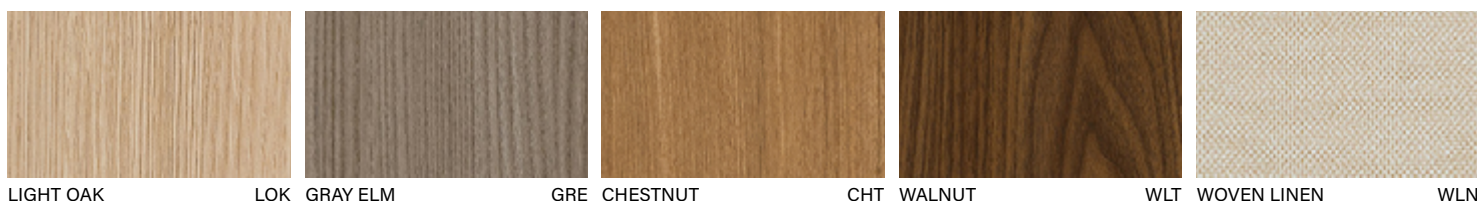
Finishes



STANDARD FINISHES



THE NATURALS (25% SCALE)



STANDARD COLOR COMBINATIONS*

Upper Housing Finish	Lower Housing Finish	Cord/Stem/Canopy Color
Black (BK)	Black (BK)	Black
	Light Oak (LOK)	
	Grey Elm (GRE)	
	Chestnut (CHT)	
	Walnut (WLT)	
	Woven Linen (WLN)	
White (WH)	White (WH)	White
	Light Oak (LOK)	
	Grey Elm (GRE)	
	Chestnut (CHT)	
	Walnut (WLT)	
	Woven Linen (WLN)	
Palladium Silver (PS)	Palladium Silver (PS)	Black
	Walnut (WLT)	
	Light Oak (LOK)	White
	Grey Elm (GRE)	
	Chestnut (CHT)	
	Woven Linen (WLN)	
Custom RAL color	Custom RAL color	White

Upper Housing Finish	Lower Housing Finish	Cord/Stem/Canopy Color
Walnut (WLT)	Walnut (WLT)	Black
	Black (BK)	
	Palladium Silver (PS)	
	White (WH)	White
Grey Elm (GRE)	Grey Elm (GRE)	White
	White (WH)	
	Palladium Silver (PS)	Black
Light Oak (LOK)	Light Oak (LOK)	White
	White (WH)	
	Palladium Silver (PS)	Black
Chestnut (CHT)	Black (BK)	Black
	Chestnut (CHT)	White
	White (WH)	
	Palladium Silver (PS)	
Woven Linen (WLN)	Black (BK)	Black
	Woven Linen (WLN)	White
	White (WH)	
	Palladium Silver (PS)	
	Black (BK)	Black

*The Naturals finishes may be specified for Shallow Canopy (SC) and Power Canopy (PC) by adding the finish color to the canopy code. For example: Shallow Canopy in Light Oak = SCLOK.)