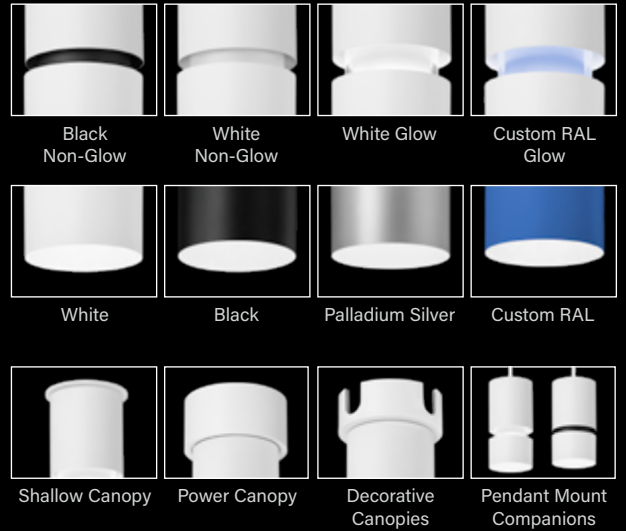
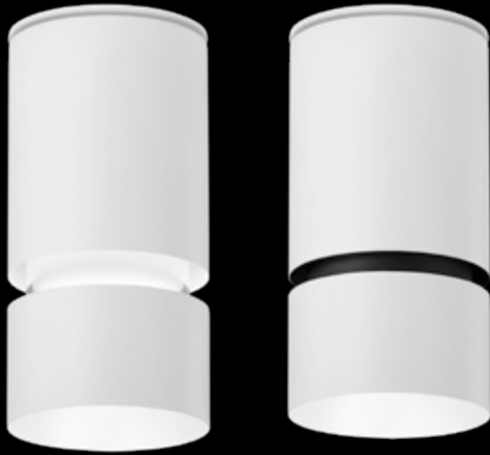
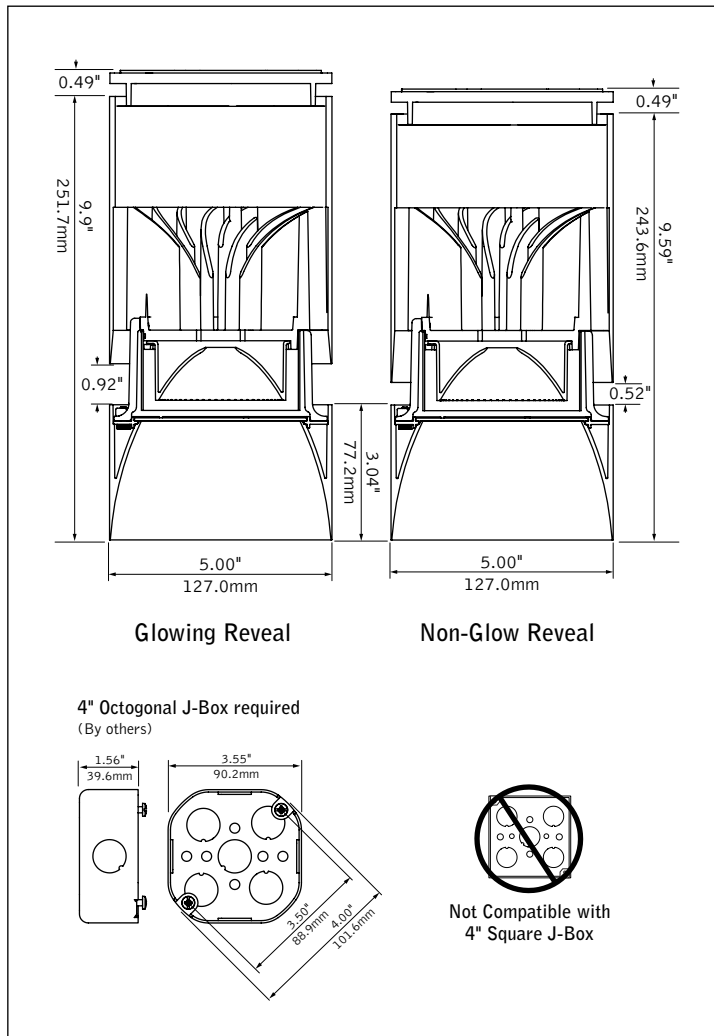


ID+ 4.5" Cylinder

LED SURFACE MOUNT WITH DECORATIVE REVEAL



DIMENSIONAL DATA (continued on page 3 & 4)



FEATURES

4.5" cylinder pendant with decorative reveal; glow or non-glow options.

Custom color options for finish and glowing reveal.

One-piece die-cast reflector with a knife edge for a modern aesthetic.

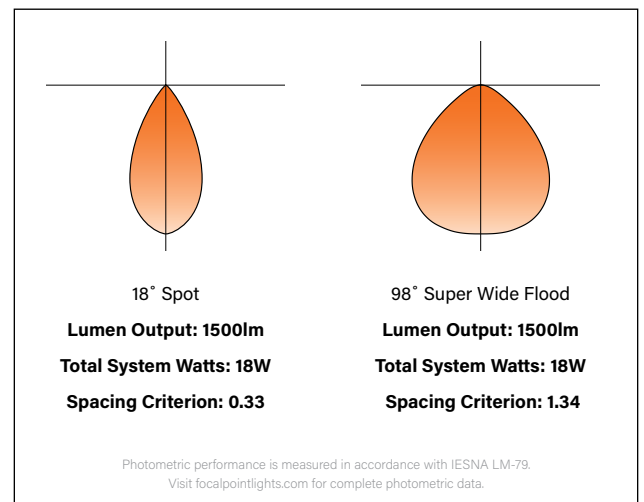
50° cut-off for brightness control and visual comfort.

Multiple canopy options enable various driver offerings and conduit installations while maintaining premier aesthetics.

Warm Dim: Lighting that enhances spaces with a warm glow, reminiscent of incandescent or halogen light sources.

PoE compatible: Integrates with Power over Ethernet lighting systems via standard, low-voltage wires.

PERFORMANCE



fixture:

project:

SPECIFICATIONS

LED System

Proprietary LED module with single light emitting source. May be specified in 2700K, 3000K, 3500K or 4000K in CRI>80 or CRI>90. 3500K and 4000K with CRI>90 have a cyanosis observation index (COI) of 3.3 or less. Color accuracy within 2 SDCM. Aluminum heat sink provides appropriate thermal management.

Construction

Upper housing is extruded aluminum. Lower reflector is die-cast aluminum. Twist & lock construction leaves no visible fasteners within the knife edge trim. Fixture will not exceed 5 lb.

Optics

Beam spreads achieved with optics that may be easily changed in field.

Lumen Output	Cut-Off Degree	Distribution Beam Spread Spacing Criteria					
		SP	NFL	FL	WFL	VWFL	SWFL
1000 - 1500	50°	18° 0.33	27° 0.48	35° 0.59	54° 0.83	69° 1.02	—
	80°	—	—	—	—	—	98° 1.34
2000 - 3000	50°	—	26° 0.44	41° 0.67	56° 0.83	69° 1.08	—
	80°	—	—	—	—	—	98° 1.34

Electrical

Choice of constant current dimming drivers. Power factor > .9 typical. PoE compatible; Integrates with Power over Ethernet lighting systems via standard, low-voltage wires. Not Right Light as standard, consult factory.

Emergency

Emergency output — 7W for 90 minutes. Maximum mounting height: 16ft. J-box cannot be recessed above the ceiling with Emergency Battery.

Labels

UL and cUL listed. Suitable for Dry, Damp, or Wet Locations, indoor use only.

Finish

Polyester powder coat applied over a multi-stage pre-treatment.

Lumen Maintenance

Reported: L70 > 60,000 hours

Calculated: L70 at > 204,000 hours

L80 > 60,000 hours

L80 at > 126,000 hours

(Derived from EPA TM-21 calculator. Based on typical conditions, consult factory for additional data.)


Reliability

At Focal Point, our products are designed to stand the test of time. Each luminaire is engineered using superior components, manufactured with the utmost care and rigorously tested. Contact us for reliability data.

Warranty

LED system rated for operation in ambient environments up to 25°C. 5 year limited warranty.

PERFORMANCE TABLE

Lumen Output	Delivered Lumens	System Watts	LPW
1000L	1033	11	91
1500L	1509	18	86
 1500L	1606	23	69
2000L	2074	24	88
2500L	2609	31	84
3000L	2906	34	84

Glowing Reveal, 3500K, 80CRI, Clear Diffuse, Flood distribution. Warm Dim based on 3000 - 1800K, 90 CRI. Lumen output may vary +/- 5%. Actual wattage may vary +/- 5%.



Options in orange qualify for the Quickship program. 10-day up to 50 pieces. Refer to Quickship Guide for complete details.


Focal Point LLC reserves the right to change specifications for product improvement without notification.

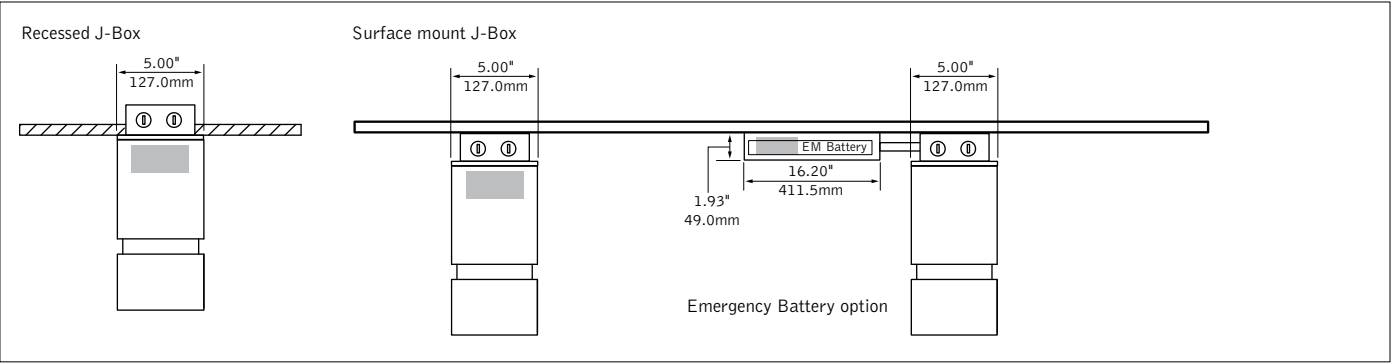
ORDERING

Luminaire Series ID+ 4.5" Round Cylinder	FLCY4	FLCY4
Trim Type Round	RD	RD
Decorative Reveal White Non-Glow Reveal Black Non-Glow Reveal White Glowing Reveal Custom Color Glowing Reveal (Specify your RAL color value. Extended lead time consult factory.)	WHR BKR WHG RAL_ _ _ _	
Lumen Output 1000 Lumens 1500 Lumens 2000 Lumens 2500 Lumens 3000 Lumens (PC & DPC Only)	1000L 1500L 2000L 2500L 3000L	
Color Temperature 2700K, 80+ CRI or 90+ CRI 3000K, 80+ CRI or 90+ CRI 3500K, 80+ CRI or 90+ CRI 4000K, 80+ CRI or 90+ CRI Warm Dim: 2700-1800K, 90+ CRI Warm Dim: 3000-1800K, 90+ CRI (Warm Dim: 1500L only. EMR not available.)	27K or 927K 30K or 930K 35K or 935K 40K or 940K 92718W 93018W	
Single Circuit	1C	
Voltage 120/277 UNV 120 Volt 277 Volt Low Voltage	UNV 120 277 LV	
Canopy Configuration Shallow Canopy, Integral Driver* Shallow Canopy with decorative* J-box cover, Integral Driver *(L11, LVN & LFP only. Warm Dim: 1500L only.)	SC DSC	
Power Canopy Power Canopy with decorative J-box cover	PC DPC	
Control System & Dimming Level 0-10V - 0% Dimming 0-10V - 1% Dimming Low Voltage, PoE compatible (No driver. Not available with EMR. SC or DSC with LV Voltage only.)	LZ1 L11 LVN	
Phase Dimming (SC with 120V only. Consult factory for recommended dimmers.)	LFP	
Lutron Hi-Lume EcoSystem (LDE1) - 1% Dimming	LH1	
Lutron Hi-Lume - Forward Phase - 1% Dimming (120V only. 1000L only.)	LTE	
DALI - 0% Dimming	DZ1	
DALI - 1% Dimming	D11	
Mounting Surface Mount	SM SM	
Optic 50° Cut-off Cone (Not available with SWFL distribution)	DNT	
50° Cut-off Cone with Solite Lens (NFL distribution only)	DNTS	
80° Cut-off Cone (SWFL distribution only)	DSS	
Distribution Spot (1000L & 1500L only) Narrow Flood Flood Wide Flood Very Wide Flood Super Wide Flood	SP NFL FL WFL VWFL SWFL	
Factory Options Emergency Battery (J-box cannot be recessed above the ceiling. Remote test switch.)	EMR	
Reflector Color Clear Diffuse	CD	CD
Luminaire Finish (Cylinder and canopy finish match)		
Black White Palladium Silver Custom Color (Specify your RAL color value. Extended lead time consult factory.)	BK WH PS RAL_ _ _ _	

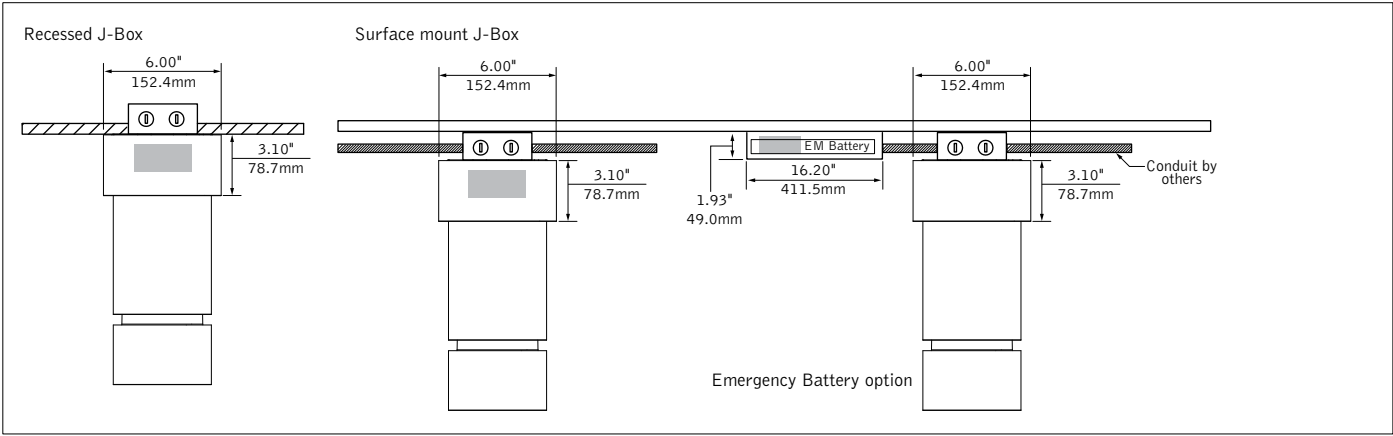
DIMENSIONAL DATA CONTINUED

SC - Shallow Canopy, Integral Driver

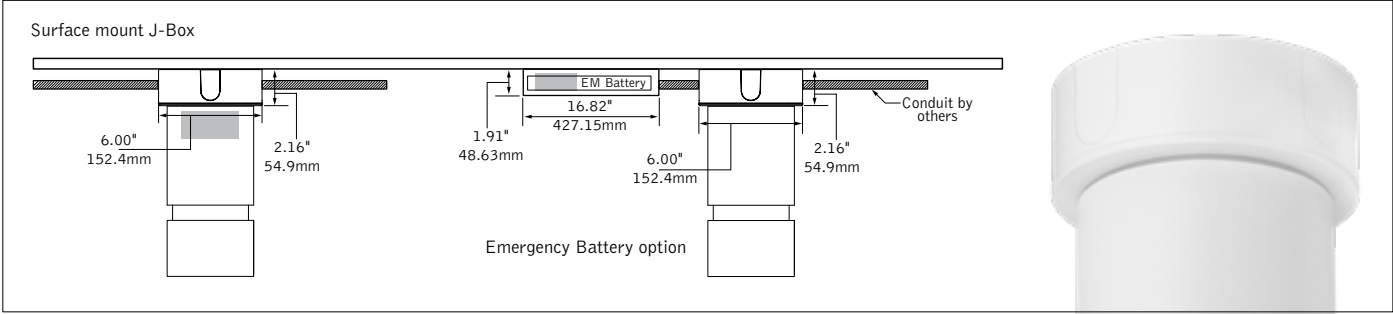
 Indicates Driver Location



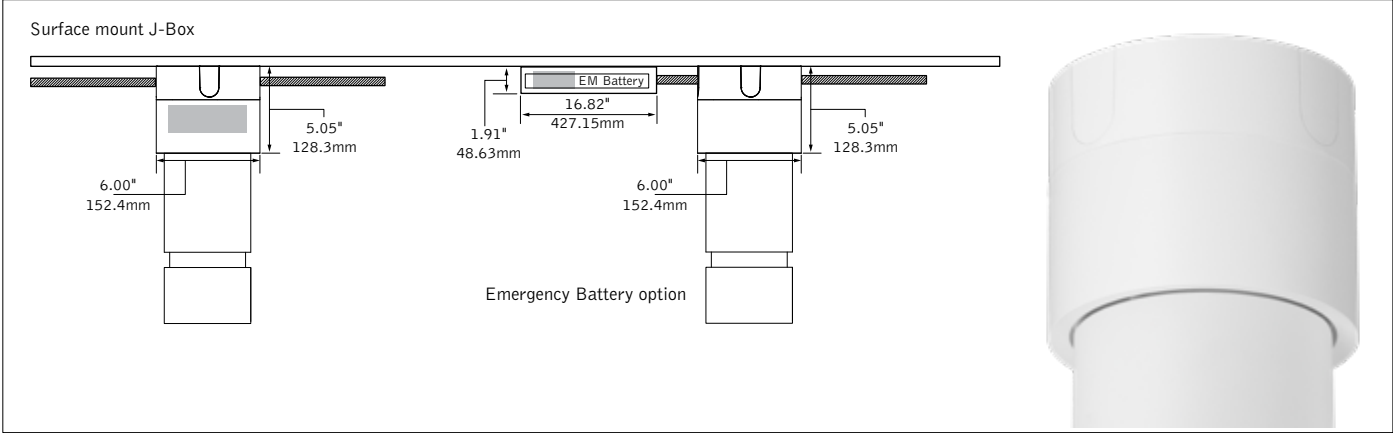
PC - Power Canopy



DSC - Shallow Canopy with decorative J-box cover, Integral Driver



DPC - Power Canopy with decorative J-box cover



4.5" CYLINDER LUMEN MULTIPLIER TABLE

Decorative Reveal

Trim Type	Optic	Decorative Reveal	Multiplier
Round [RD]	ALL	White Non-Glow Reveal [WHR]	0.94
		Black Non-Glow Reveal [BKR]	0.94
		White Glowing Reveal [WHG]	1.00

Color Temperature & CRI

Trim Type	Optic	Lumen Output	Color Temperature	Multiplier
Round [RD]	ALL	ALL	2700K, 80+ CRI [27K]	0.93
			2700K, 90+ CRI [927K]	0.78
			3000K, 80+ CRI [30K]	0.97
			3000K, 90+ CRI [930K]	0.81
			3500K, 80+ CRI [35K]	1.00
			3500K, 90+ CRI [935K]	0.83
			4000K, 80+ CRI [40K]	1.01
			4000K, 90+ CRI [940K]	0.86
		1500	2700-1800K, 90+ CRI [92718W]	0.76
		1500	3000-1800K, 90+ CRI [93018W]	1.07

Optic & Distribution (1000L - 1500L)

Trim Type	Optic	Distribution	Multiplier
Round [RD]	Tall Cone, 50° cut-off [DNT]	Spot (18") [SPL]	1.00
		Narrow Flood (27") [NFL]	0.97
		Flood (35") [FL]	0.93
		Wide Flood (54") [WFL]	1.00
		Very Wide Flood (69") [VWFL]	0.93
	Tall Cone, 50° cut-off with Solite Lens [DNTS]	Narrow Flood (27") [NFL]	1.00
	Super Short Cone, 80° cut-off [DSS]	Super Wide Flood (98") [SWFL]	0.85

Optic & Distribution (2000L - 3000L)

Trim Type	Optic	Distribtuon	Multiplier
Round [RD]	Tall Cone, 50° cut-off [DNT]	Narrow Flood (26") [NFL]	0.98
		Flood (41") [FL]	0.92
		Wide Flood (56") [WFL]	1.00
		Very Wide Flood (69") [VWFL]	0.89
	Tall Cone, 50° cut-off with Solite Lens [DNTS]	Narrow Flood (26") [NFL]	1.11
	Super Short Cone, 80° cut-off [DSS]	Super Wide Flood (98") [SWFL]	0.83

Multiplier tables are provided to aid with estimation of lumen levels across options. Apply multipliers against ordered Lumen Output to estimate Delivered Lumens. Refer to IES files for most accurate photometric information.

How To Use Lumen Multipliers

Formula: (Lumen Output Value) x (Decorative Reveal) x (Color Temperature & CRI) x (Optic & Distribution)

Example: FLCY4-RD-WHR-1000L-935K-DNT-FL
(1000) x (0.94) x (0.83) x (0.93) ≈ 726 lm (estimated delivered lumens)

NON-SCALLOPING SUPER WIDE FLOOD DESIGN GUIDE - 1500 LUMEN EXAMPLE

Distance from bottom of fixture	Footcandles											
	Fixtures 3' from Wall				Fixtures 3.5' from Wall				Fixtures 4' from Wall			
	3' OC		3.5' OC		3' OC		3.5' OC		3' OC		3.5' OC	
1.0'	3"	3	3	3	2	2	2	2	2	2	2	2
	6"	3	3	3	3	3	3	2	2	2	2	2
	9"	4	4	4	4	4	4	3	3	3	3	3
	12"	5	5	5	5	5	5	4	4	4	3	3
2'		13	13	13	11	11	11	9	9	9	8	8
3'		21	21	21	18	18	18	16	16	16	14	14
4'		24	24	24	20	20	20	20	20	20	17	17
5'		22	22	22	19	19	19	21	21	21	18	18
6'		19	19	19	16	16	16	19	19	19	16	16
7'		16	16	16	14	14	14	17	17	17	14	14
8'		14	14	14	12	12	12	14	14	14	12	12
9'		12	12	12	10	10	10	12	12	12	11	11
10'		10	10	10	8	8	8	10	10	10	9	9

