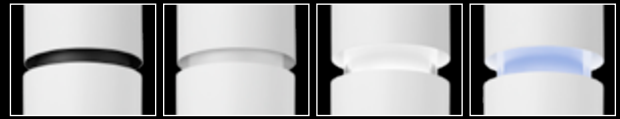


# ID+ 4.5" Cylinder

LED SURFACE MOUNT WITH DECORATIVE REVEAL



FOCAL POINT®

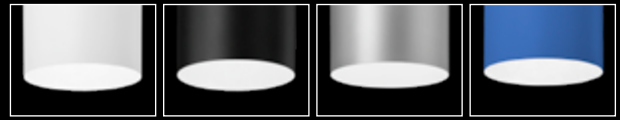


Black Non-Glow

White Non-Glow

White Glow

Custom RAL Glow



White

Black

Palladium Silver

Custom RAL



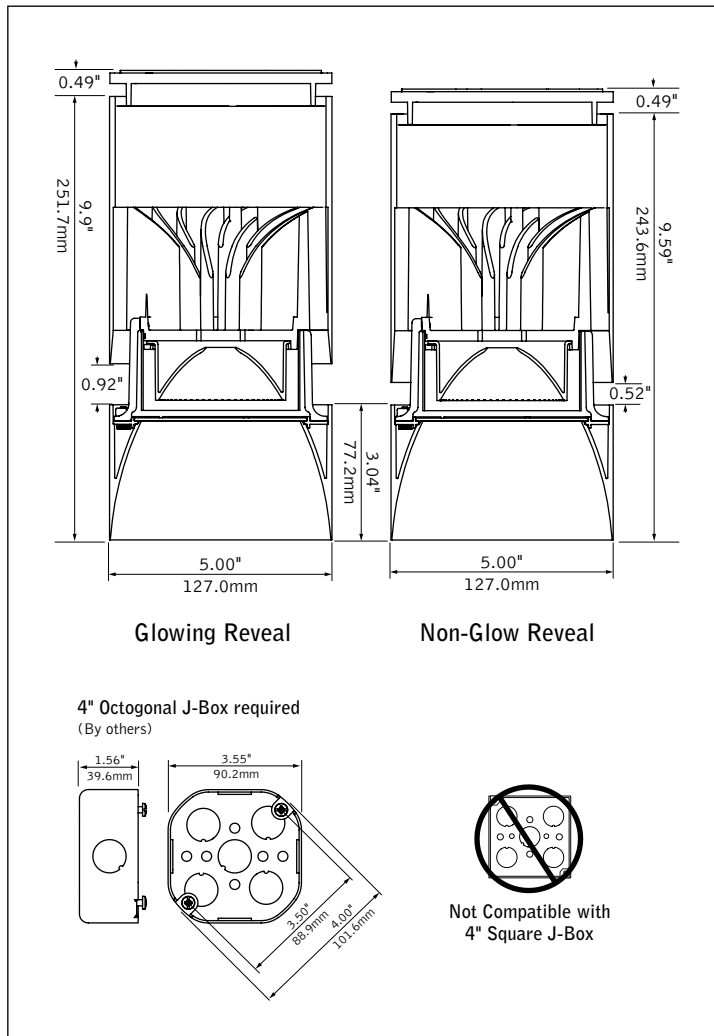
Shallow Canopy

Power Canopy

Decorative Canopies

Pendant Mount Companions

## DIMENSIONAL DATA (continued on page 3 & 4)



## FEATURES

4.5" cylinder pendant with decorative reveal; glow or non-glow options.

Custom color options for finish and glowing reveal. One-piece die-cast reflector with a knife edge for a modern aesthetic.

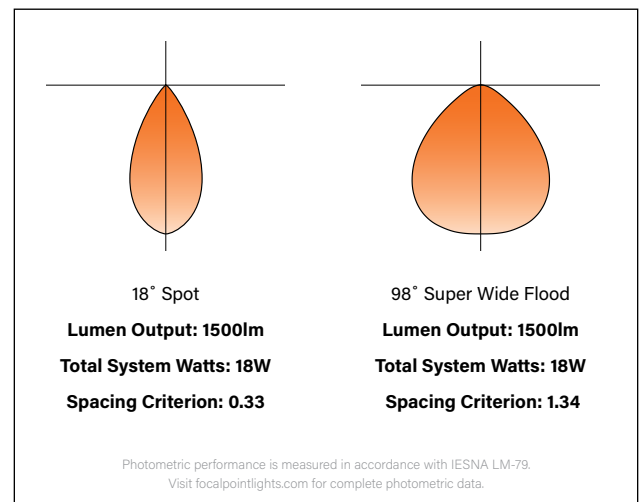
50° cut-off for brightness control and visual comfort.

Multiple canopy options enable various driver offerings and conduit installations while maintaining premier aesthetics.

Warm Dim: Lighting that enhances spaces with a warm glow, reminiscent of incandescent or halogen light sources.

PoE compatible: Integrates with Power over Ethernet lighting systems via standard, low-voltage wires.

## PERFORMANCE



fixture:

project:

### SPECIFICATIONS

#### LED System

Proprietary LED module with single light emitting source. May be specified in 2700K, 3000K, 3500K or 4000K in CRI>80 or CRI>90. 3500K and 4000K with CRI>90 have a cyanosis observation index (COI) of 3.3 or less. Color accuracy within 2 SDCM. Aluminum heat sink provides appropriate thermal management.

#### Construction

Upper housing is extruded aluminum. Lower reflector is die-cast aluminum. Twist & lock construction leaves no visible fasteners within the knife edge trim. Fixture will not exceed 5 lb.

#### Optics

Beam spreads achieved with optics that may be easily changed in field.

Lumen Output	Cut-Off Degree	Distribution Beam Spread   Spacing Criteria						SWFL
		SP	NFL	FL	WFL	VWFL		
1000 - 1500	50°	18°   0.33	27°   0.48	35°   0.59	54°   0.83	69°   1.02	—	
	80°	—	—	—	—	—	98°   1.34	
2000 - 3000	50°	—	26°   0.44	41°   0.67	56°   0.83	69°   1.08	—	
	80°	—	—	—	—	—	98°   1.34	

#### Electrical

Choice of constant current dimming drivers. Power factor > .9 typical. PoE compatible: Integrates with Power over Ethernet lighting systems via standard, low-voltage wires. Not Right Light as standard, consult factory.

#### Emergency

Emergency output — 7W for 90 minutes. Maximum mounting height: 16ft. J-box cannot be recessed above the ceiling with Emergency Battery.

#### Labels

UL and cUL listed. Suitable for Dry, Damp, or Wet Locations, indoor use only.

#### Finish

Polyester powder coat applied over a multi-stage pre-treatment.

#### Lumen Maintenance

Reported: L70 > 60,000 hours                      Calculated: L70 at > 204,000 hours  
L80 > 60,000 hours                                  L80 at > 126,000 hours  
(Derived from EPA TM-21 calculator. Based on typical conditions, consult factory for additional data.)


#### Reliability

At Focal Point, our products are designed to stand the test of time. Each luminaire is engineered using superior components, manufactured with the utmost care and rigorously tested. Contact us for reliability data.

#### Warranty

LED system rated for operation in ambient environments up to 25°C. 5 year limited warranty.

### PERFORMANCE TABLE

Lumen Output	Delivered Lumens	System Watts	LPW
1000L	1033	11	91
1500L	1509	18	86
 1500L	1606	23	69
2000L	2074	24	88
2500L	2609	31	84
3000L	2906	34	84

Glowing Reveal, 3500K, 80CRI, Clear Diffuse, Flood distribution. Warm Dim based on 3000 - 1800K, 90 CRI. Lumen output may vary +/- 5%. Actual wattage may vary +/- 5%.

 Options in orange qualify for the Quickship program. 10-day up to 50 pieces. Refer to Quickship Guide for complete details.

Focal Point LLC reserves the right to change specifications for product improvement without notification.

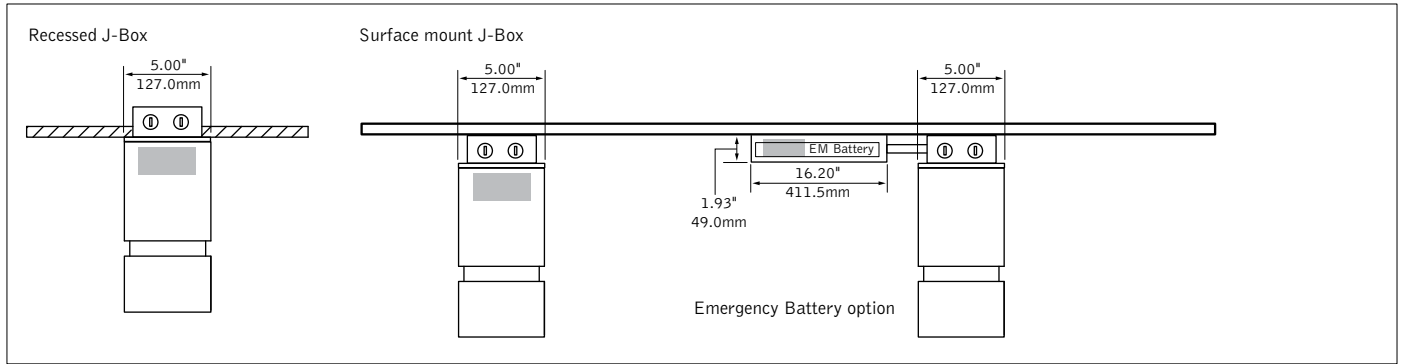
### ORDERING

<b>Luminaire Series</b>	<b>FLCY4</b>
ID+ 4.5" Round Cylinder	FLCY4
<b>Trim Type</b>	<b>RD</b>
Round	RD
<b>Decorative Reveal</b>	
White Non-Glow Reveal	WHR
Black Non-Glow Reveal	BKR
White Glowing Reveal	WHG
Custom Color Glowing Reveal	RAL_ _ _ _
<small>(Specify your RAL color value. Extended lead time consult factory.)</small>	
<b>Lumen Output</b>	
1000 Lumens	1000L
1500 Lumens	1500L
2000 Lumens	2000L
2500 Lumens	2500L
3000 Lumens (PC & DPC Only)	3000L
<b>Color Temperature</b>	
2700K, 80+ CRI or 90+ CRI	27K or 927K
3000K, 80+ CRI or 90+ CRI	30K or 930K
3500K, 80+ CRI or 90+ CRI	35K or 935K
4000K, 80+ CRI or 90+ CRI	40K or 940K
Warm Dim: 2700-1800K, 90+ CRI	92718W
Warm Dim: 3000-1800K, 90+ CRI	93018W
<small>(Warm Dim: 1500L only. EMR not available.)</small>	
Single Circuit	1C
<b>Voltage</b>	
120/277 UNV	UNV
120 Volt	120
277 Volt	277
Low Voltage	LV
<b>Canopy Configuration</b>	
Shallow Canopy, Integral Driver*	SC
Shallow Canopy with decorative J-box cover, Integral Driver	DSC
<small>*(L11, LVN &amp; LFP only. Warm Dim: 1500L only.)</small>	
Power Canopy	PC
Power Canopy with decorative J-box cover	DPC
<b>Control System &amp; Dimming Level</b>	
0-10V - 0% Dimming	LZ1
0-10V - 1% Dimming	L11
Low Voltage, PoE compatible	LVN
<small>(No driver. Not available with EMR. SC or DSC with LV Voltage only.)</small>	
Phase Dimming	LFP
<small>(SC with 120V only. Consult factory for recommended dimmers.)</small>	
Lutron Hi-Lume EcoSystem (LDE1) - 1% Dimming	LH1
Lutron Hi-Lume - Forward Phase - 1% Dimming (120V only, 1000L only)	LTE
DALI - 0% Dimming	DZ1
DALI - 1% Dimming	D11
<b>Mounting</b>	<b>SM</b>
Surface Mount	SM
<b>Optic</b>	
50° Cut-off Cone	DNT
<small>(Not available with SWFL distribution)</small>	
50° Cut-off Cone with Solite Lens	DNTS
<small>(NFL distribution only)</small>	
80° Cut-off Cone	DSS
<small>(SWFL distribution only)</small>	
<b>Distribution</b>	
Spot (1000L & 1500L only)	SP
Narrow Flood	NFL
Flood	FL
Wide Flood	WFL
Very Wide Flood	VWFL
Super Wide Flood	SWFL
<b>Factory Options</b>	
Emergency Battery	EMR
<small>(J-box cannot be recessed above the ceiling. Remote test switch.)</small>	
<b>Reflector Color</b>	<b>CD</b>
Clear Diffuse	CD
<b>Luminaire Finish</b>	
<small>(Cylinder and canopy finish match)</small>	
Black	BK
White	WH
Palladium Silver	PS
Custom Color	RAL_ _ _ _
<small>(Specify your RAL color value. Extended lead time consult factory.)</small>	

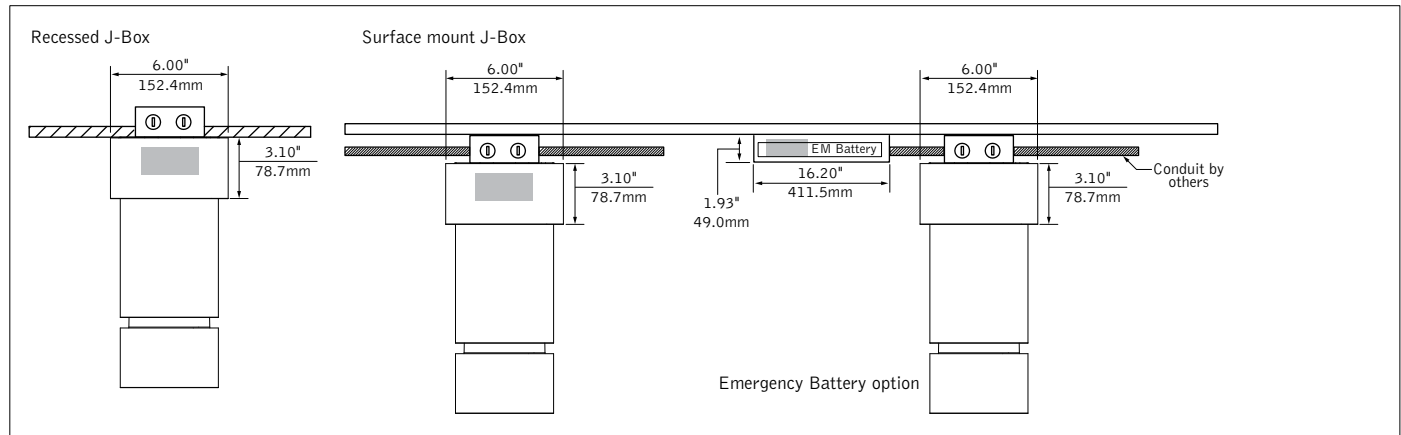
**DIMENSIONAL DATA CONTINUED**

**SC - Shallow Canopy, Integral Driver**

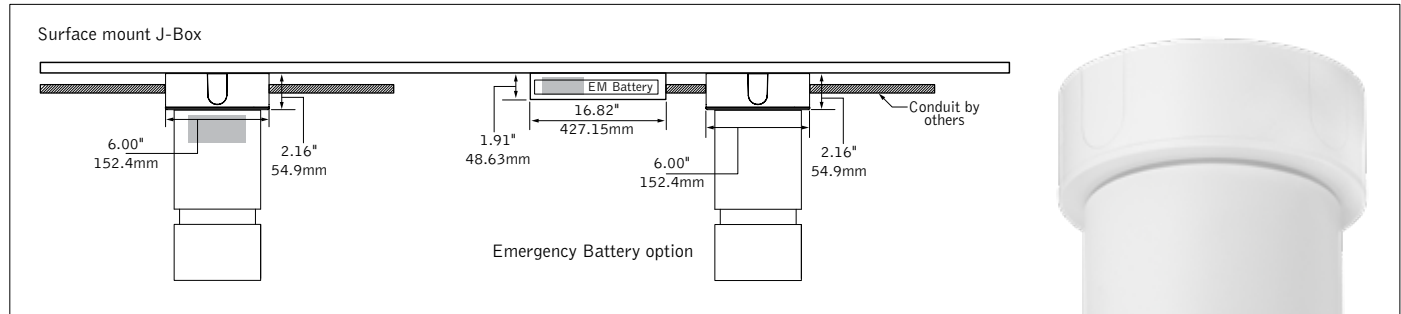
■ Indicates Driver Location



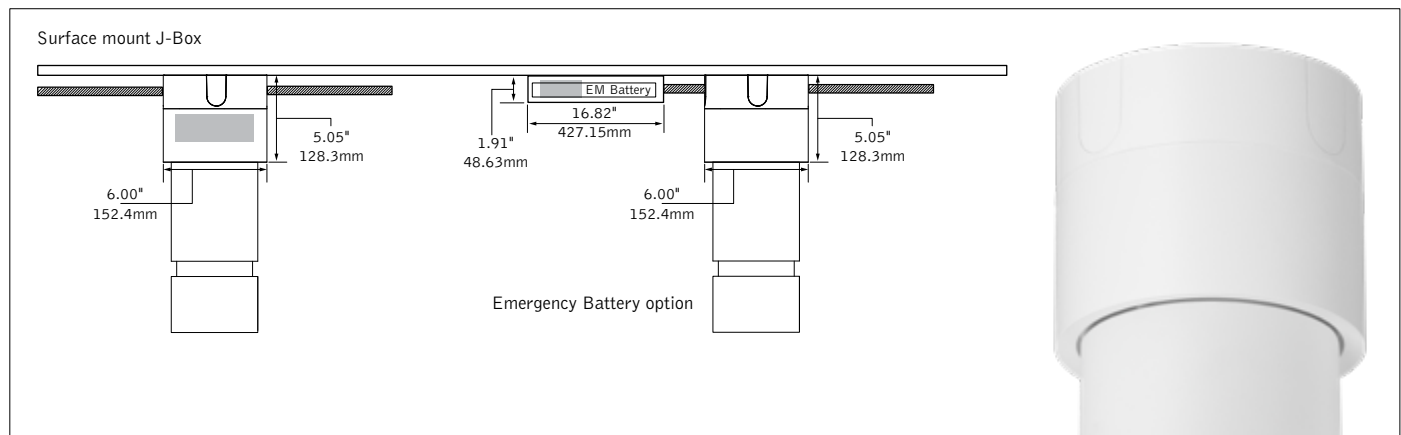
**PC - Power Canopy**



**DSC - Shallow Canopy with decorative J-box cover, Integral Driver**



**DPC - Power Canopy with decorative J-box cover**



## 4.5" CYLINDER LUMEN MULTIPLIER TABLE

### Decorative Reveal

Trim Type	Optic	Decorative Reveal	Multiplier
Round [RD]	ALL	White Non-Glow Reveal [WHR]	0.94
		Black Non-Glow Reveal [BKR]	0.94
		White Glowing Reveal [WHG]	1.00

### Color Temperature & CRI

Trim Type	Optic	Lumen Output	Color Temperature	Multiplier	
Round [RD]	ALL	ALL	2700K, 80+ CRI [27K]	0.93	
			2700K, 90+ CRI [927K]	0.78	
			3000K, 80+ CRI [30K]	0.97	
			3000K, 90+ CRI [930K]	0.81	
			3500K, 80+ CRI [35K]	1.00	
			3500K, 90+ CRI [935K]	0.83	
			4000K, 80+ CRI [40K]	1.01	
			4000K, 90+ CRI [940K]	0.86	
			1500	2700-1800K, 90+ CRI [92718W]	0.76
			1500	3000-1800K, 90+ CRI [93018W]	1.07

### Optic & Distribution (1000L - 1500L)

Trim Type	Optic	Distribution	Multiplier
Round [RD]	Tall Cone, 50° cut-off [DNT]	Spot (18°) [SPL]	1.00
		Narrow Flood (27°) [NFL]	0.97
		Flood (35°) [FL]	0.93
		Wide Flood (54°) [WFL]	1.00
		Very Wide Flood (69°) [VWFL]	0.93
	Tall Cone, 50° cut-off with Solite Lens [DNLS]	Narrow Flood (27°) [NFL]	1.00
	Super Short Cone, 80° cut-off [DSS]	Super Wide Flood (98°) [SWFL]	0.85

### Optic & Distribution (2000L - 3000L)

Trim Type	Optic	Distribution	Multiplier
Round [RD]	Tall Cone, 50° cut-off [DNT]	Narrow Flood (26°) [NFL]	0.98
		Flood (41°) [FL]	0.92
		Wide Flood (56°) [WFL]	1.00
		Very Wide Flood (69°) [VWFL]	0.89
	Tall Cone, 50° cut-off with Solite Lens [DNLS]	Narrow Flood (26°) [NFL]	1.11
	Super Short Cone, 80° cut-off [DSS]	Super Wide Flood (98°) [SWFL]	0.83

Multiplier tables are provided to aid with estimation of lumen levels across options. Apply multipliers against ordered Lumen Output to estimate Delivered Lumens. Refer to IES files for most accurate photometric information.

### How To Use Lumen Multipliers

**Formula:** (Lumen Output Value) x (Decorative Reveal) x (Color Temperature & CRI) x (Optic & Distribution)

**Example:** FLCY4-RD-WHR-1000L-935K-DNT-FL  
 $(1000) \times (0.94) \times (0.83) \times (0.93) \approx 726$  lm (estimated delivered lumens)

### NON-SCALLOPING SUPER WIDE FLOOD DESIGN GUIDE - 1500 LUMEN EXAMPLE

Distance from bottom of fixture	Footcandles																		
	Fixtures 3' from Wall			Fixtures 3.5' from Wall			Fixtures 4' from Wall												
	3' OC	3.5' OC	4' OC	3' OC	3.5' OC	4' OC	3' OC	3.5' OC	4' OC	3' OC	3.5' OC	4' OC							
1.0'	3"	3	3	3	2	2	2	2	2	2	2	2	2	2	2	2	2	2	2
	6"	3	3	3	3	3	3	3	3	3	2	2	2	2	2	2	2	2	2
	9"	4	4	4	4	4	4	3	3	3	3	3	3	3	3	3	3	3	3
	12"	5	5	5	5	5	5	4	4	4	4	4	4	4	4	4	3	3	3
2'	13	13	13	11	11	11	9	9	9	8	8	8	8	8	8	7	7	7	
3'	21	21	21	18	18	18	16	16	16	14	14	14	12	12	12	11	11	11	
4'	24	24	24	20	20	20	20	20	20	17	17	17	17	17	17	14	14	14	
5'	22	22	22	19	19	19	21	21	21	18	18	18	18	18	18	16	16	16	
6'	19	19	19	16	16	16	19	19	19	16	16	16	18	18	18	15	15	15	
7'	16	16	16	14	14	14	17	17	17	14	14	14	16	16	16	14	14	14	
8'	14	14	14	12	12	12	14	14	14	12	12	12	15	15	15	13	13	13	
9'	12	12	12	10	10	10	12	12	12	11	11	11	13	13	13	11	11	11	
10'	10	10	10	8	8	8	10	10	10	9	9	9	11	11	11	9	9	9	

