

ID⁺ 3.5" Pure Cylinder - Surface Mount

FLCY3N-RD-4H | FLCY3N-RD-7H - Power Canopy



FOCAL POINT®



BEFORE YOU BEGIN

- Luminaires must be installed by a qualified electrician (check with local and national codes for proper installation).
- To prevent electrical shock, disconnect electrical supply before installation or servicing.
- Contractor is responsible for adequately reinforcing walls and/or ceilings to support fixture weight.
- Focal Point, LLC accepts no responsibility for inadequately reinforced walls and/or ceilings.
- The information contained in this drawing is the sole property of Focal Point, LLC. Any reproduction in part or whole without the written permission of Focal Point, LLC is prohibited.

INSTRUCTION KEY



ATTENTION



SEE ADDITIONAL INSTRUCTIONS

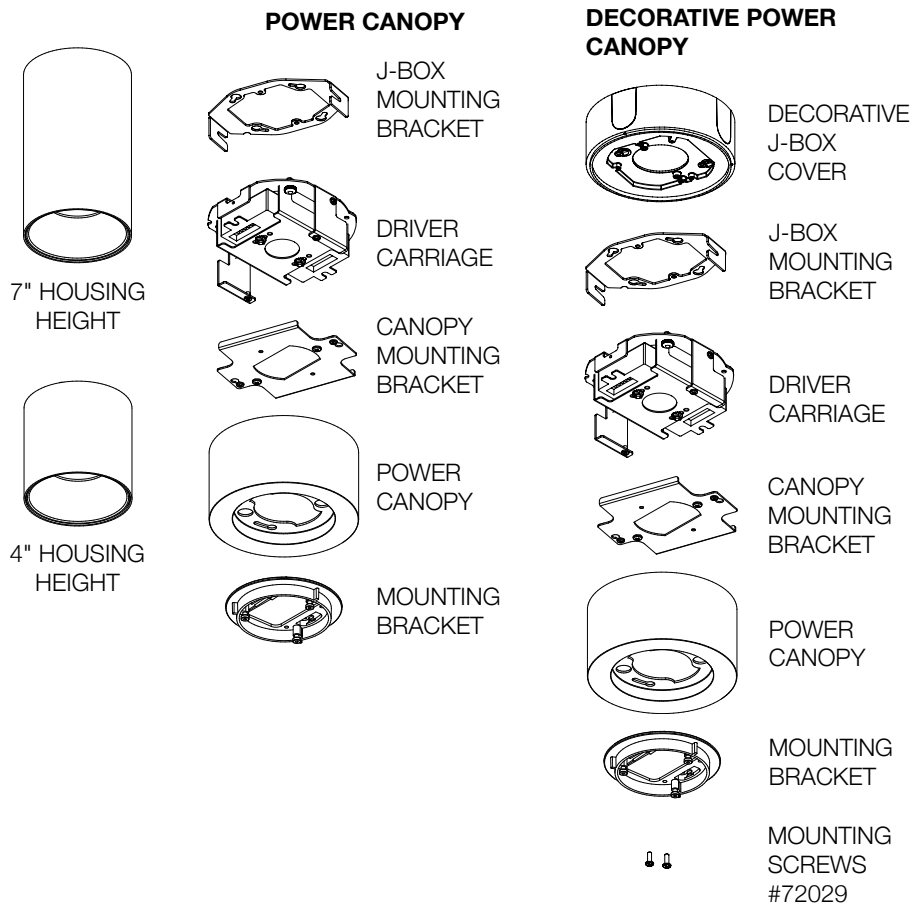


POWER OFF



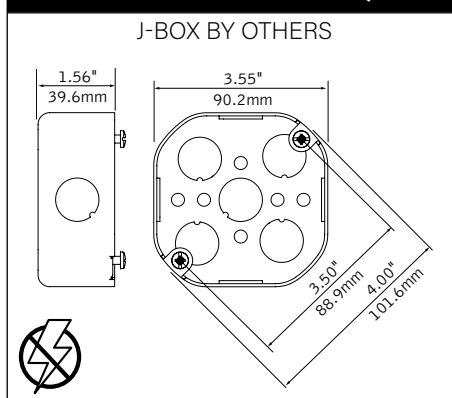
POWER ON

COMPONENT KEY



LUMINAIRE MUST BE INSTALLED PRIOR TO DRYWALL CEILING.
ALL GRID LUMINAIRE MUST BE SECURED TO STRUCTURE ABOVE.

4" OCTAGONAL J-BOX REQUIRED

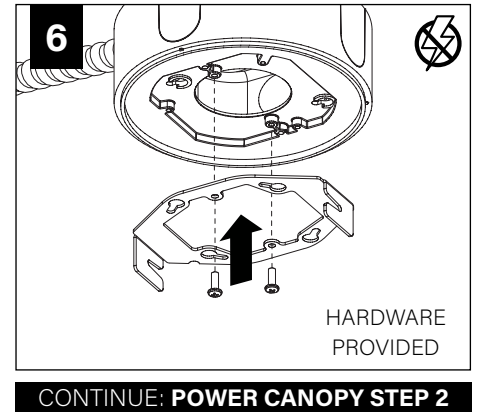
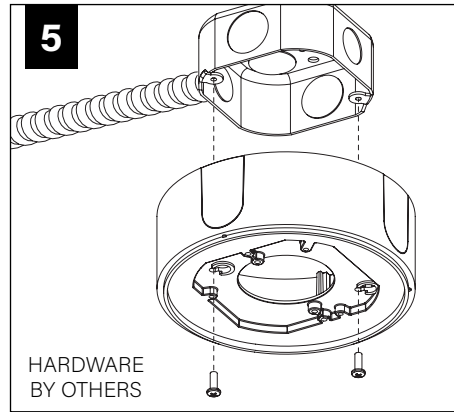
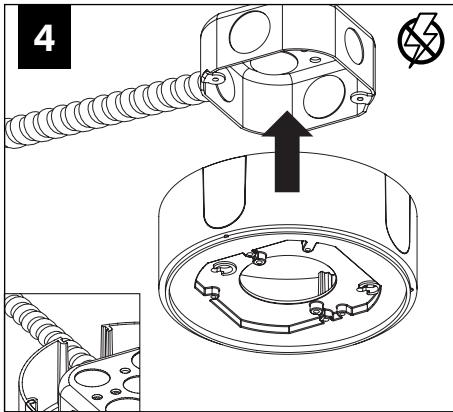
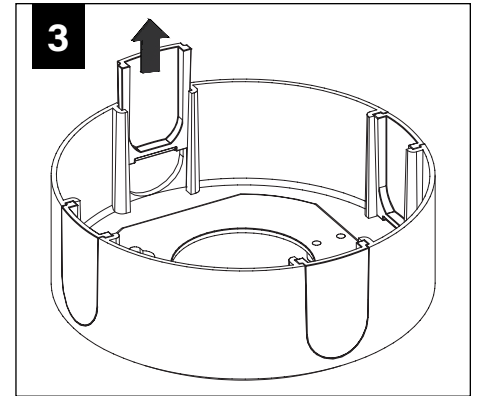
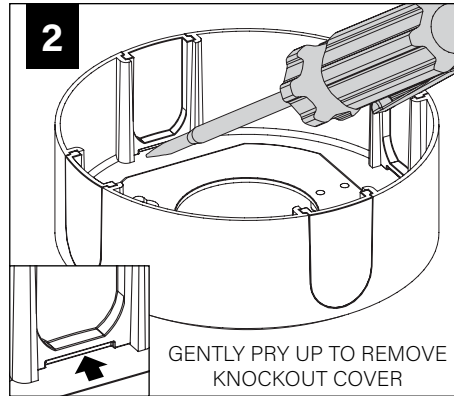
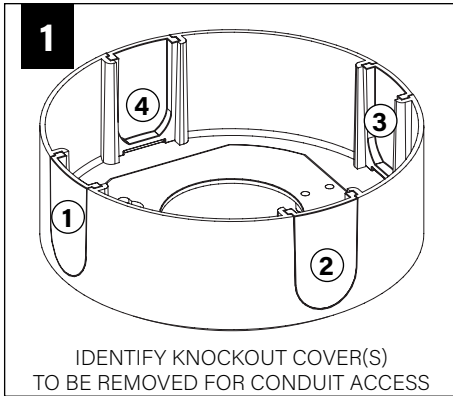


EMERGENCY

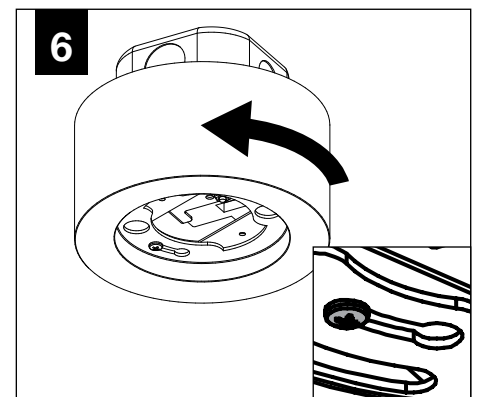
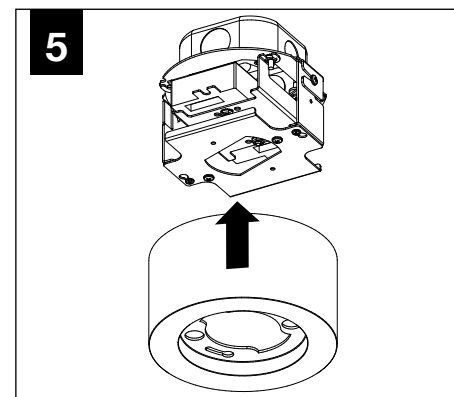
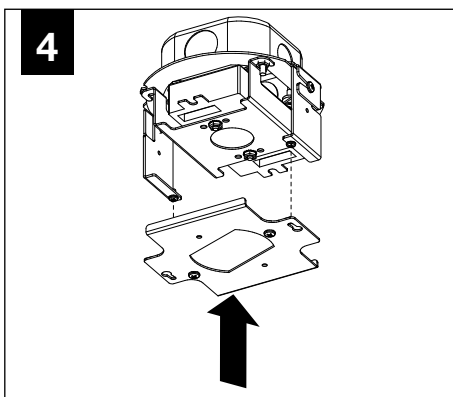
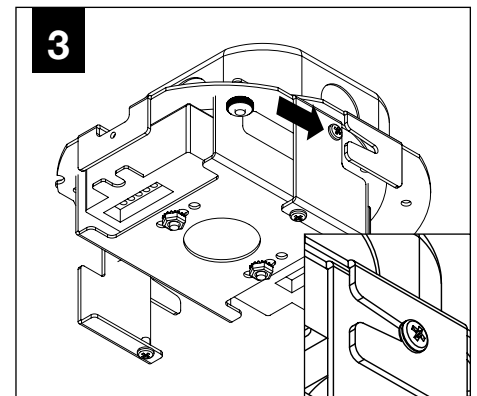
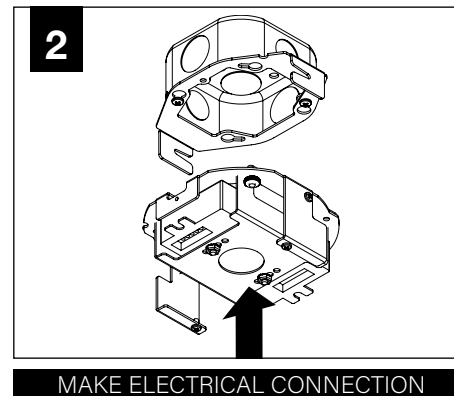
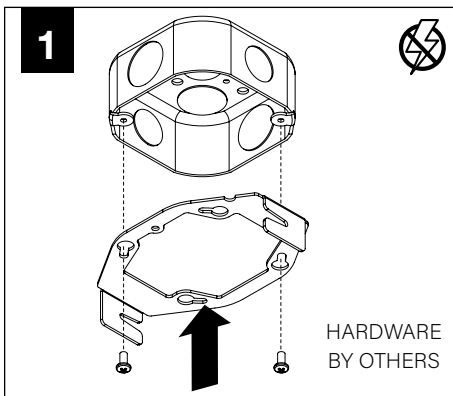


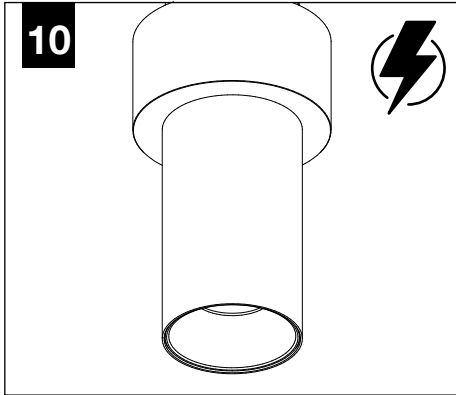
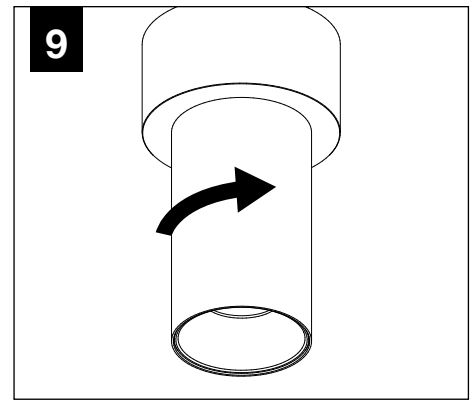
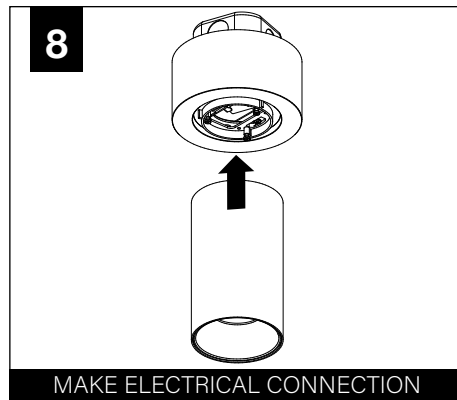
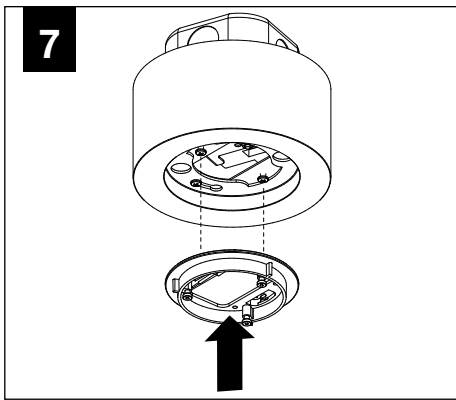
PRIOR TO LUMINAIRE INSTALLATION,
SEE **PAGE 5** FOR EMERGENCY
INSTALLATION INSTRUCTIONS.

DECORATIVE POWER CANOPY

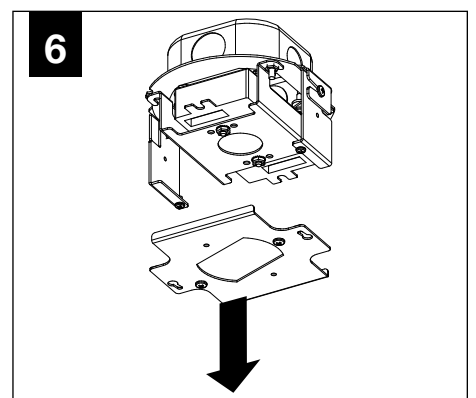
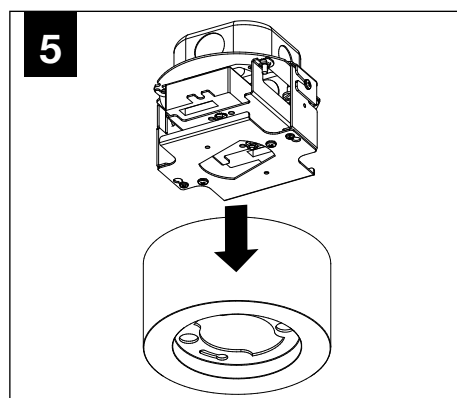
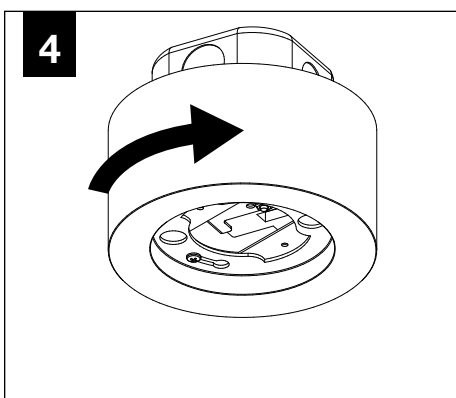
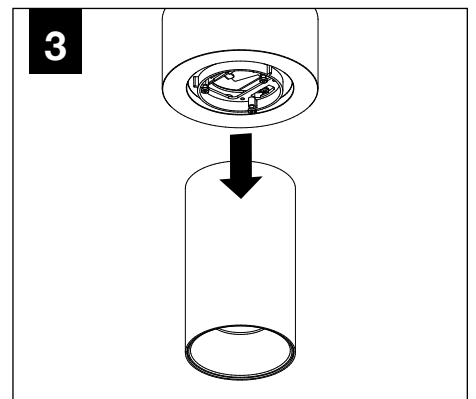
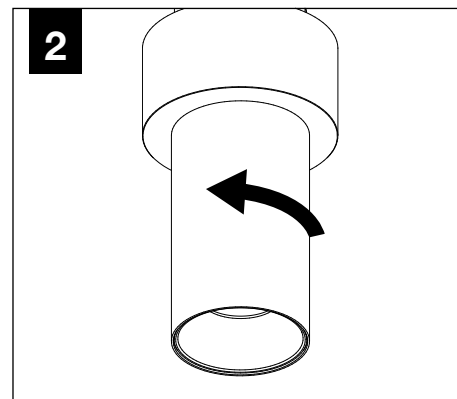
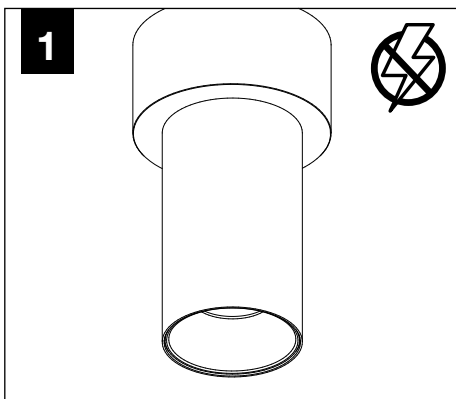


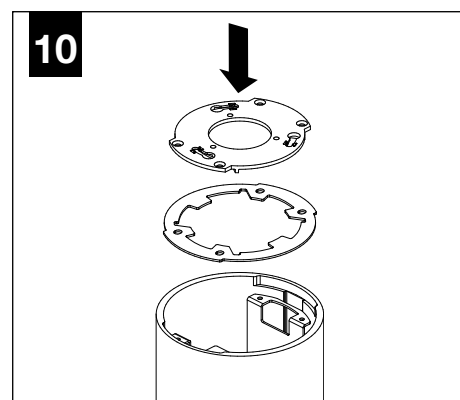
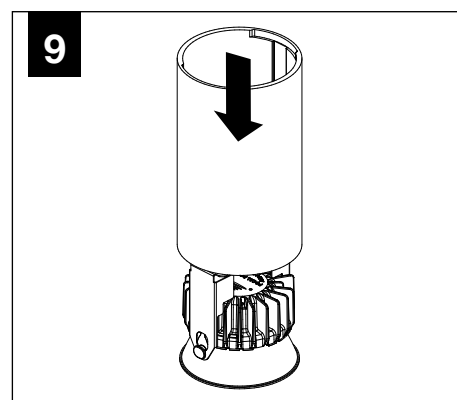
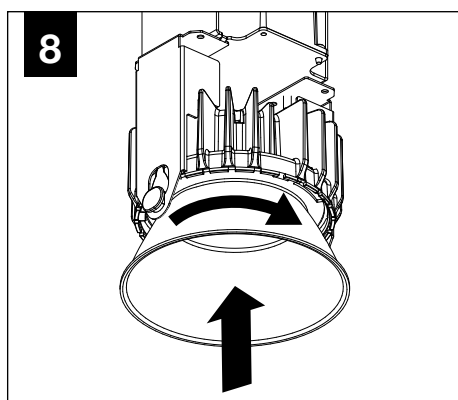
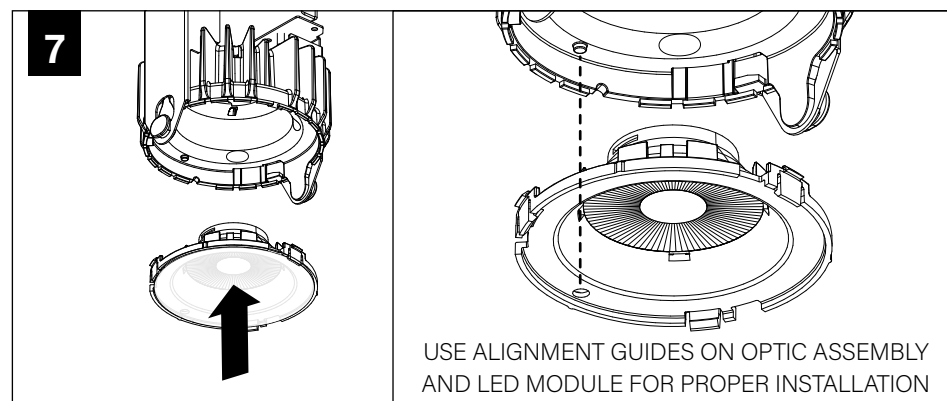
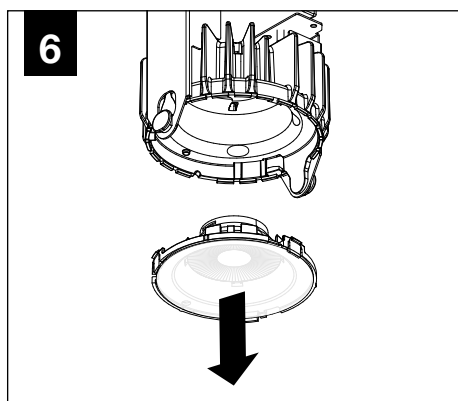
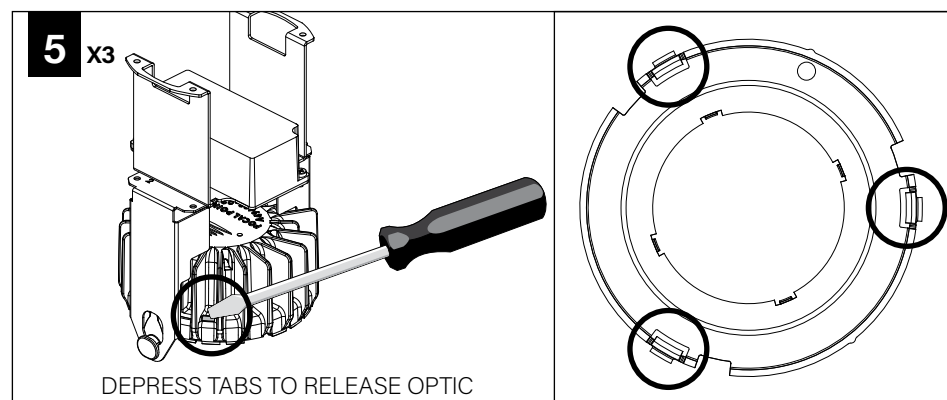
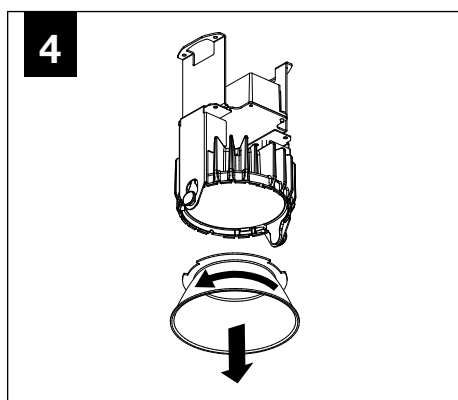
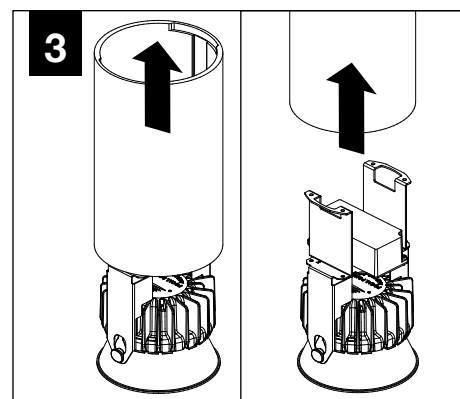
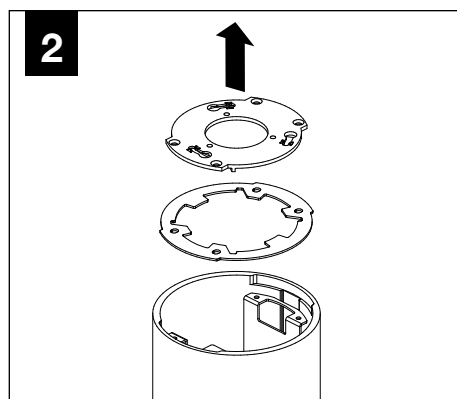
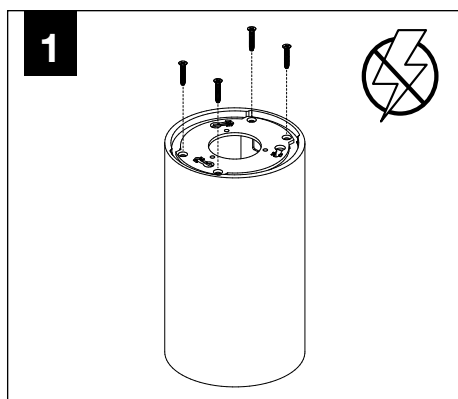
POWER CANOPY

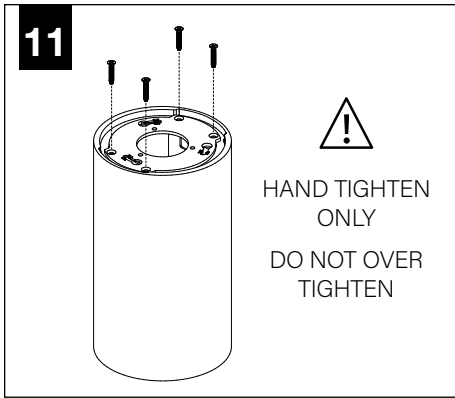




DRIVER SERVICE







EMERGENCY

