

ID+ 3.5"x3.5" Adjustable

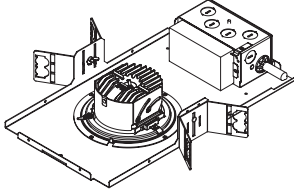
Square Overlap | FLCS33



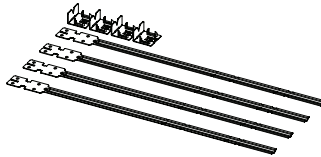
**LUMINAIRE MUST BE INSTALLED PRIOR TO DRYWALL CEILING.
ALL GRID LUMINAIRES MUST BE SECURED TO STRUCTURE ABOVE.**



NON-EMERGENCY - THERMALLY PROTECTED, NON-IC



OPTIONAL - BAR HANGERS SOLD SEPARATELY



KEY



POWER OFF



POWER ON



ATTENTION

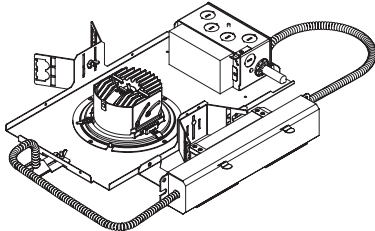


LEVEL

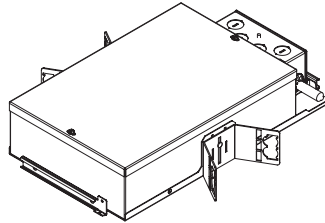


SEE ADDITIONAL
INSTRUCTIONS

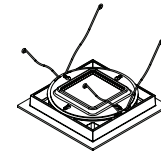
EMERGENCY - REMOTE TEST SWITCH, NON-IC



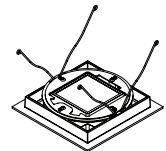
IC/CP



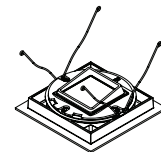
TRIM



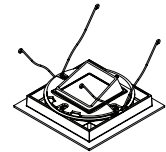
SOLITE LENS



SPOT OPTIC,
NO LENS
0°-10° TILT

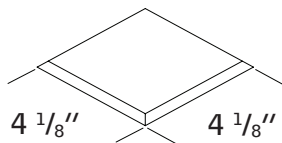


SPOT OPTIC,
NO LENS
10°-20° TILT



SPOT OPTIC,
NO LENS
20°-35° TILT

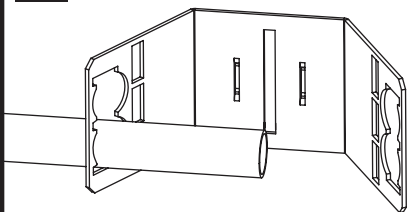
1



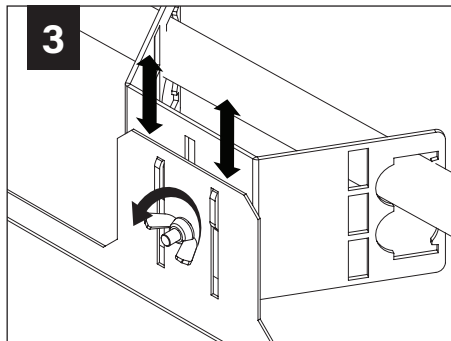
ceiling cutout

GRID - 1/2" CONDUIT & CLIP (BY OTHERS)

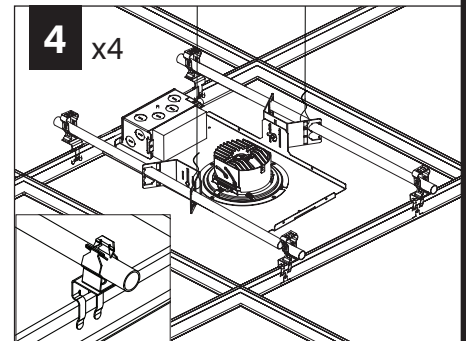
2 X2



3

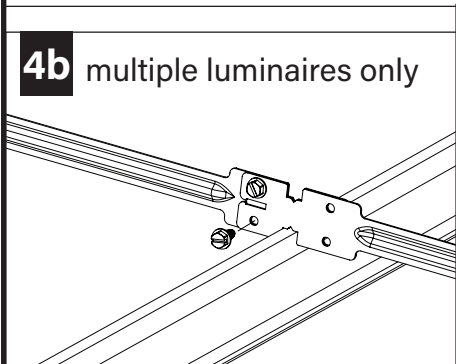
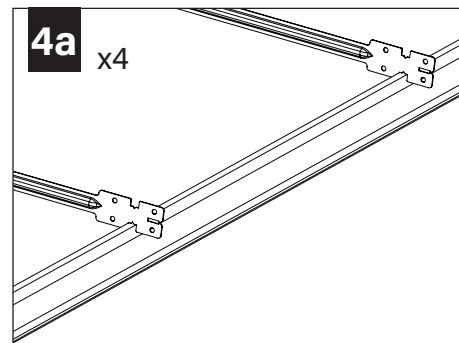
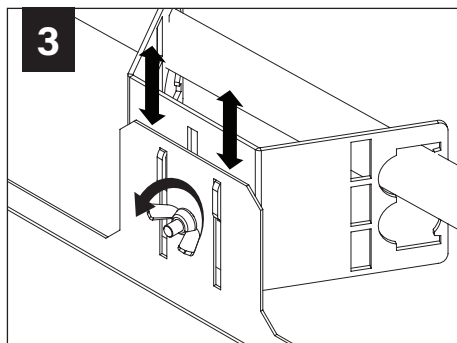
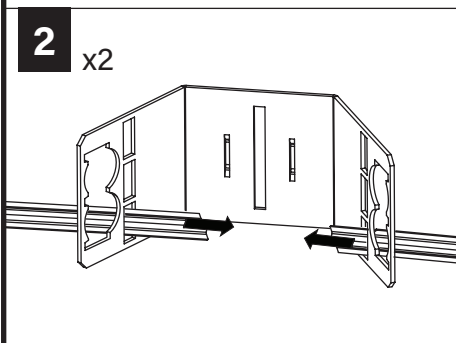


4 x4



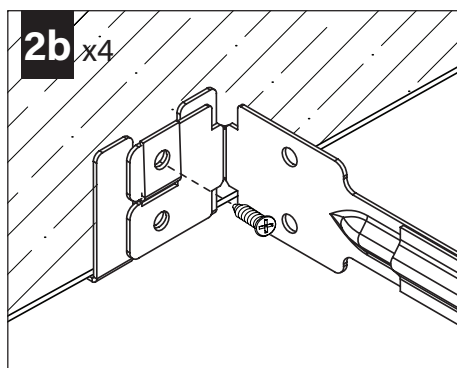
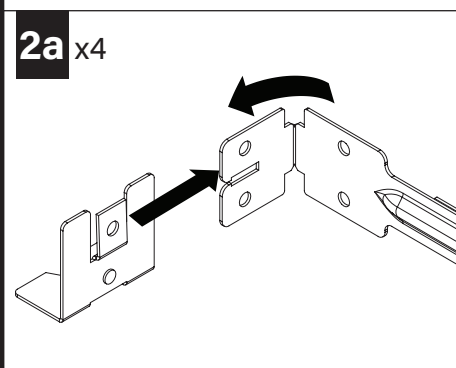
Luminaires must be installed by a qualified electrician (check with local and national codes for proper installation).
To prevent electrical shock, disconnect electrical supply before installation or servicing.

GRID - BAR HANGERS (SOLD SEPARATELY)

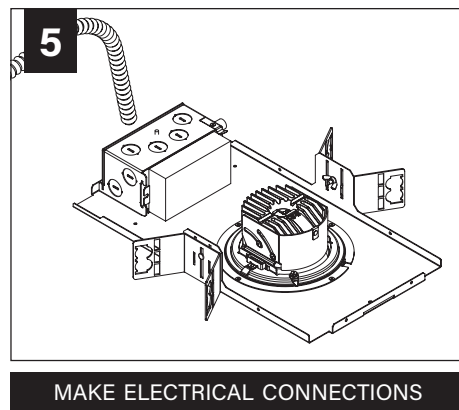
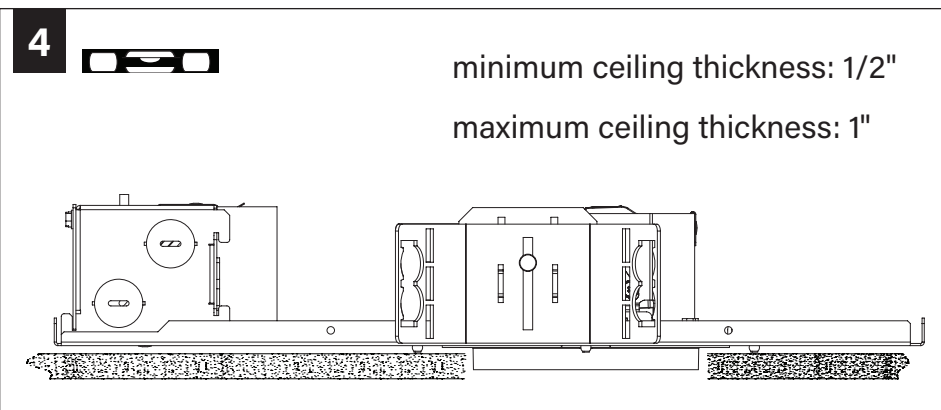
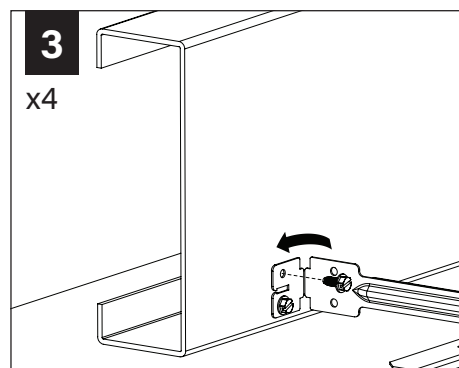


DRYWALL - BAR HANGERS

WOOD STUDS



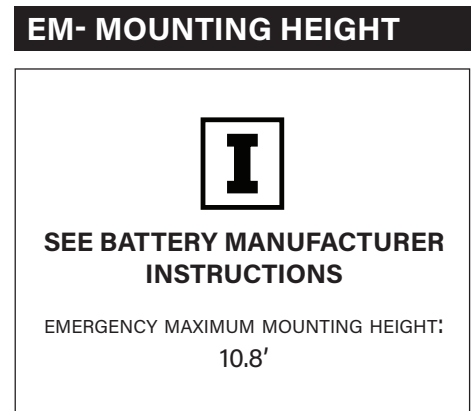
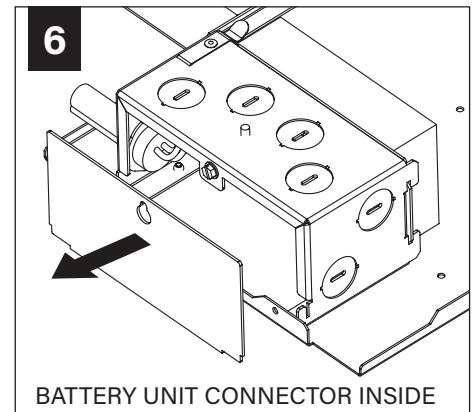
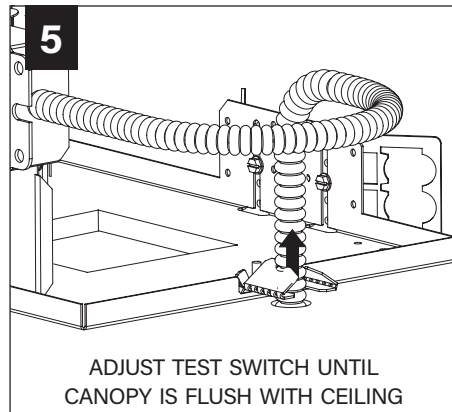
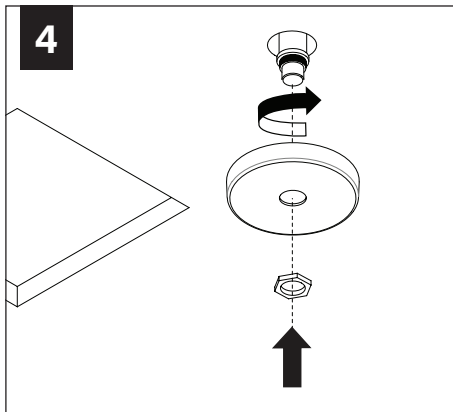
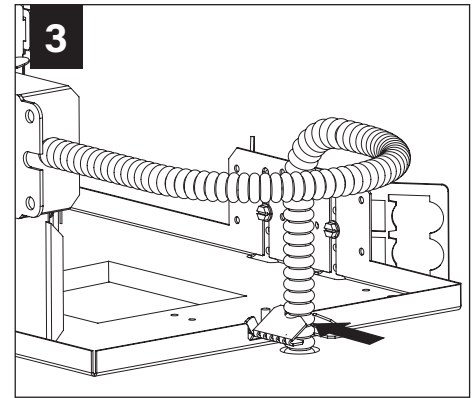
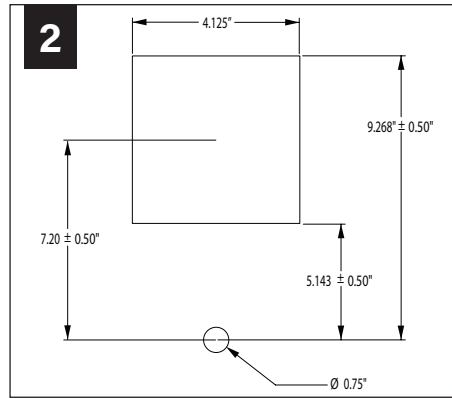
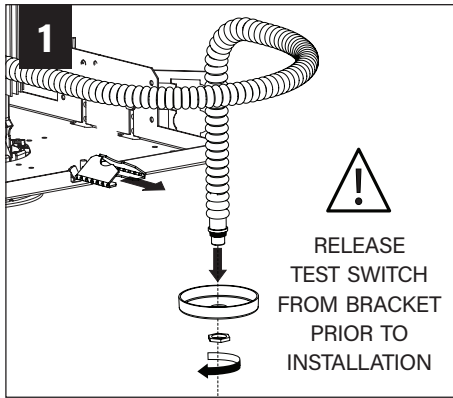
METAL STUDS



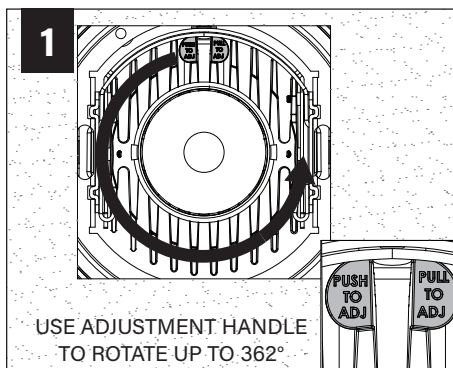
Fixtures must be installed by a qualified electrician (check with local and national codes for proper installation).
To prevent electrical shock, disconnect electrical supply before installation or servicing.

EMERGENCY - REMOTE TEST SWITCH

⚠ ABOVE CEILING ACCESS REQUIRED ⚠



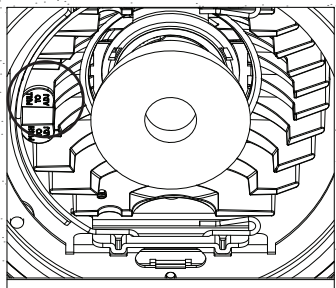
ROTATE



Fixtures must be installed by a qualified electrician (check with local and national codes for proper installation).
To prevent electrical shock, disconnect electrical supply before installation or servicing.

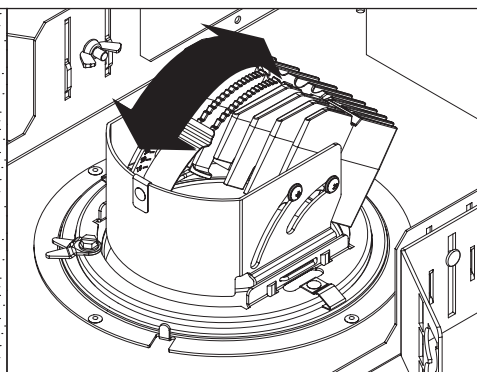
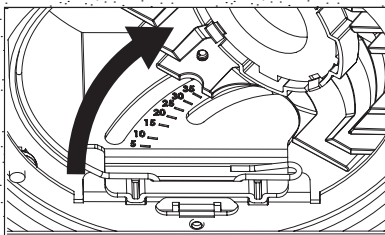
TILT

1a



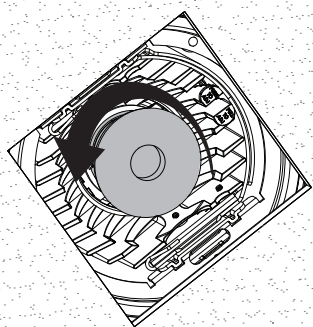
USE ADJUSTMENT HANDLE
TO TILT UP TO 35°

2a

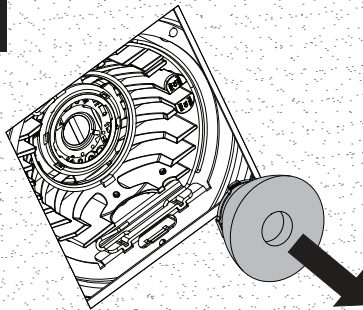


OPTIC SERVICE

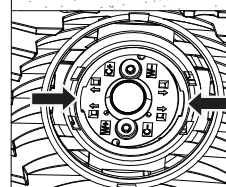
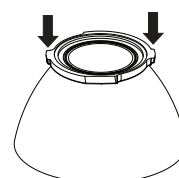
1



2

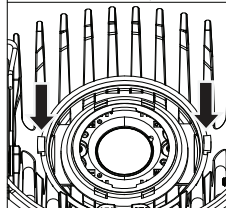
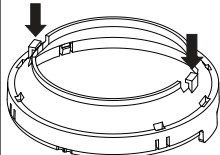


3a



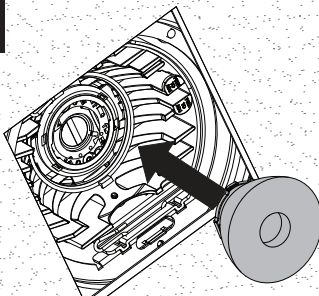
ALIGN TABS ON BACK OF OPTIC
WITH SLOTS ON FILTER MOUNT

3b

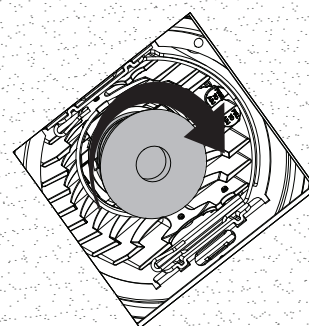


ALIGN TABS ON BACK OF OPTIC
WITH SLOTS ON FILTER MOUNT

4

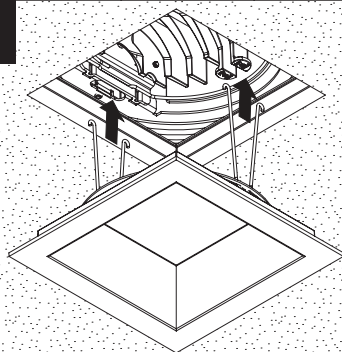


5

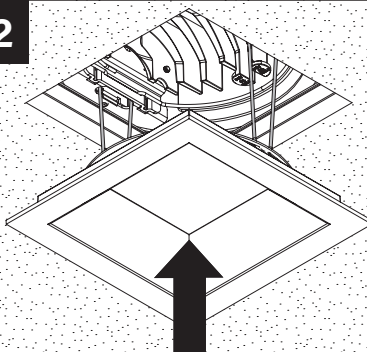


TRIM INSTALLATION

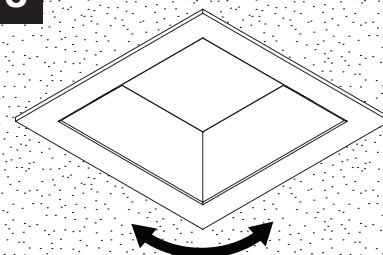
1



2



3



TRIM ROTATES FOR ALIGNMENT

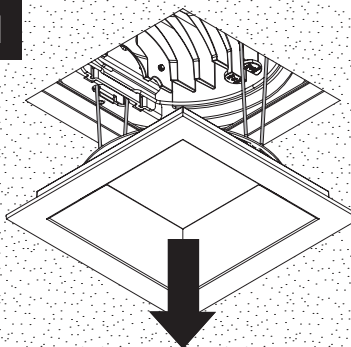
Fixtures must be installed by a qualified electrician (check with local and national codes for proper installation).
To prevent electrical shock, disconnect electrical supply before installation or servicing.

DRIVER SERVICE

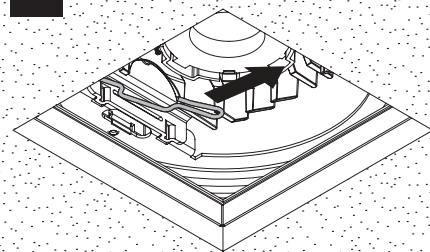


**TO PREVENT ELECTRICAL SHOCK,
DISCONNECT ELECTRICAL SUPPLY
BEFORE SERVICING**

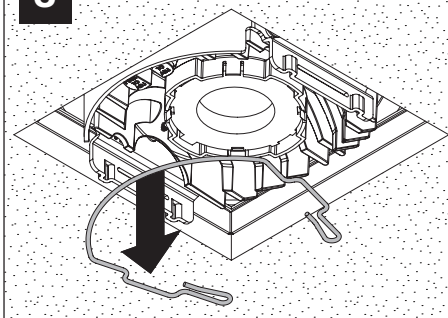
1



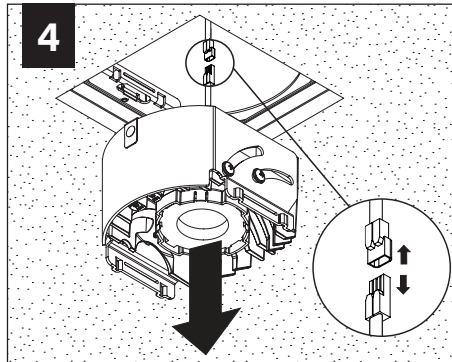
2



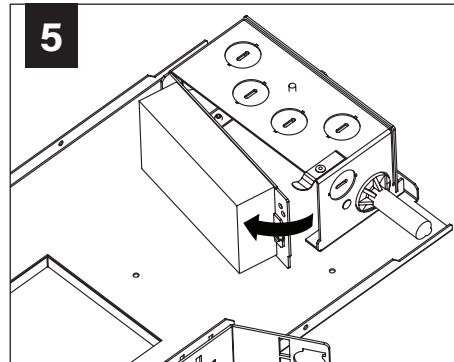
3



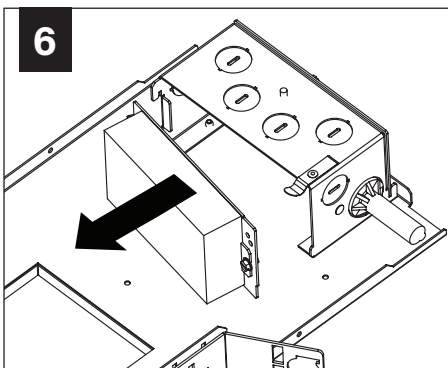
4



5



6



SPOT OPTIC TILT KIT (SOLD SEPARATELY)



SP10 & SP20 SHIP WITH SHROUDS INSTALLED.

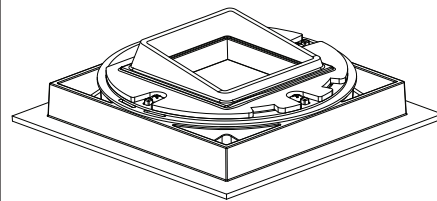
SPOT OPTICS KITS ARE AVAILABLE AS REPLACEMENTS OR IF TILT ANGLE CHANGES FROM WHAT WAS SPECIFIED.

Distribtuion: Spot (SP)

Optic	Description	Tilt Range
SL*	Solite Lens	0° – 35°
SP00*	Spot Optic, No Lens	0° – 10°
SP10	Spot Optic, No Lens	10° – 20°
SP20	Spot Optic, No Lens	20° – 35°

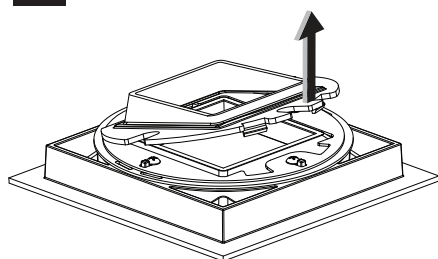
*Shroud not required

A

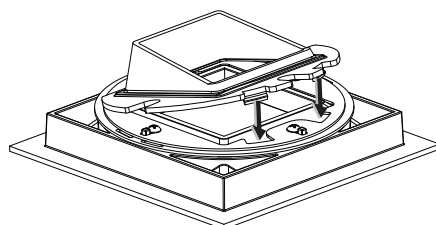


SP10: 10° – 20°

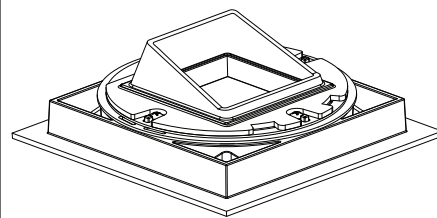
B



C



D



SP20: 20° – 35°