

id+ 3.5" round housing

FLC3D | FLC3W



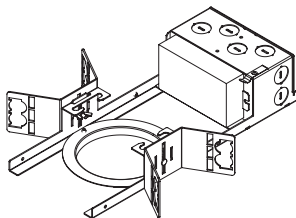
FOCAL POINT®



**LUMINAIRE MUST BE INSTALLED PRIOR TO DRYWALL CEILING.
ALL GRID LUMINAIRES MUST BE SECURED TO STRUCTURE ABOVE.**



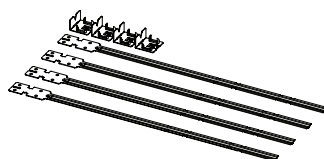
NON-EMERGENCY - THERMALLY PROTECTED, NON-IC



FLC3D | FLC3W



OPTIONAL
BAR HANGERS SOLD SEPARATELY



KEY



POWER OFF



POWER ON



ATTENTION

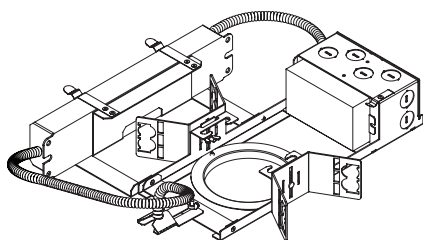


LEVEL



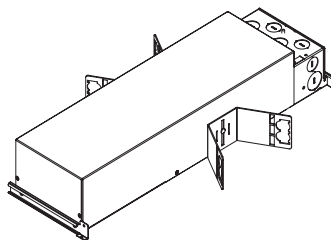
SEE ADDITIONAL
INSTRUCTIONS

EMERGENCY - REMOTE TEST SWITCH, NON-IC



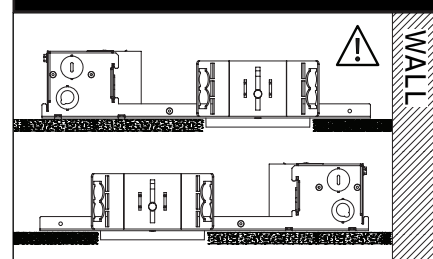
FLC3D | FLC3W

IC/CP

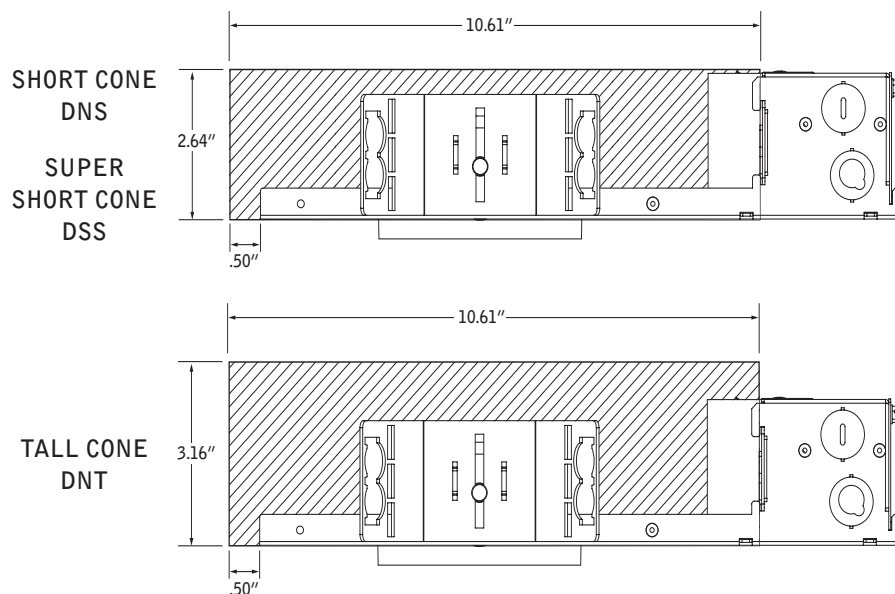


FLC3D | FLC3W

WALL WASH ORIENTATION

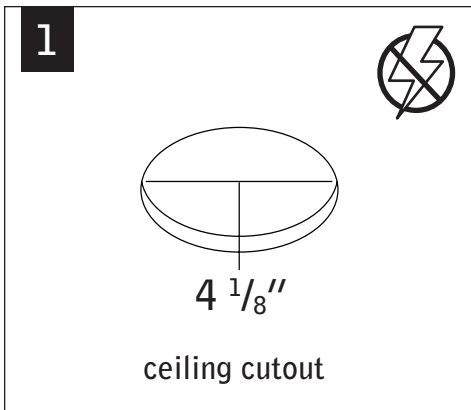


KEEP SHADED AREA FREE FROM OBSTRUCTION ABOVE CEILING

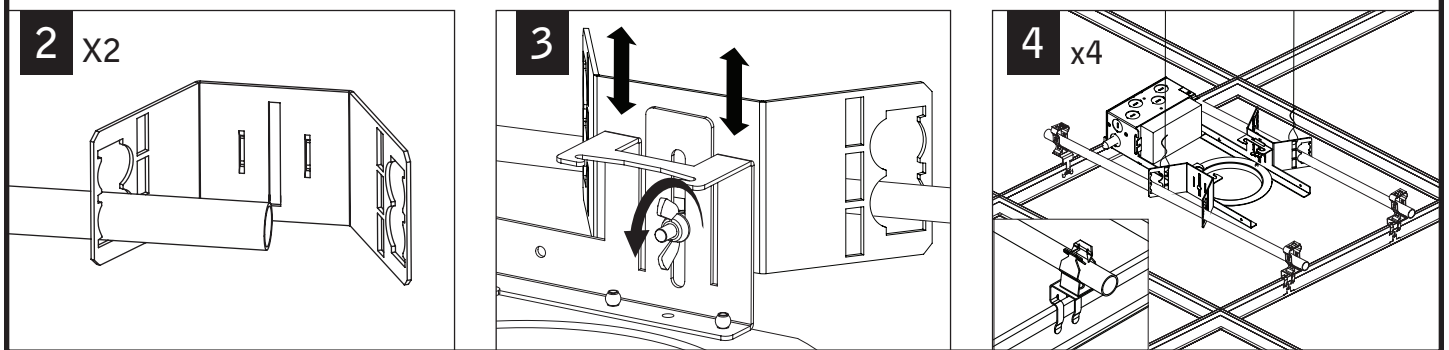


FOR ASTM E-283 AIR-TIGHT
COMPLIANCE, SEAL IC HOUSING/
RO TRIM WITH SILICONE CAULKING
BETWEEN THE EDGE OF THE COLLAR
AND CEILING MATERIAL. SEAL ALL
ADDITIONAL HOLES IN HOUSING
WITH ALUMINUM TAPE.

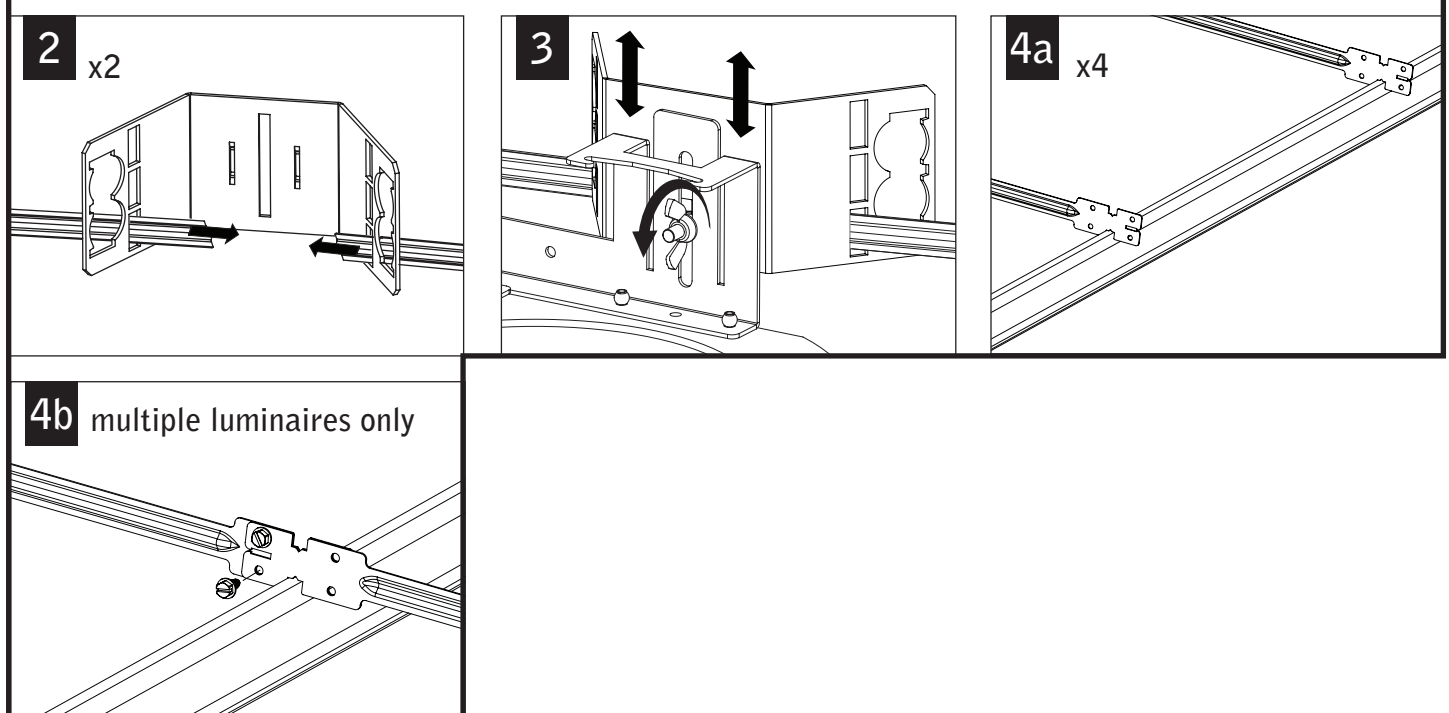
Luminaires must be installed by a qualified electrician (check with local and national codes for proper installation).
To prevent electrical shock, disconnect electrical supply before installation or servicing.



GRID - 1/2" CONDUIT & CLIP (BY OTHERS)



GRID - BAR HANGERS (SOLD SEPARATELY)

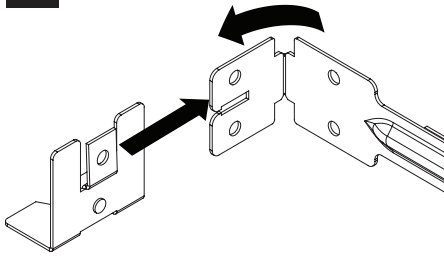


Fixtures must be installed by a qualified electrician (check with local and national codes for proper installation).
To prevent electrical shock, disconnect electrical supply before installation or servicing.

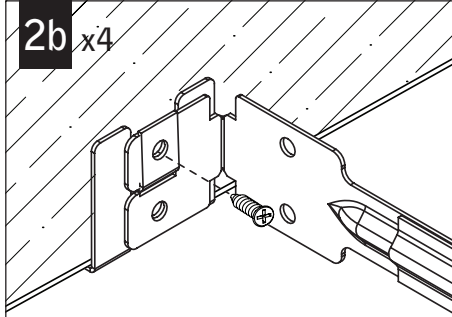
DRYWALL - BAR HANGERS

WOOD STUDS

2a x4

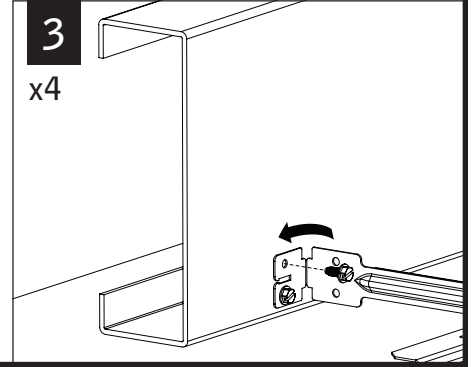


2b x4



METAL STUDS

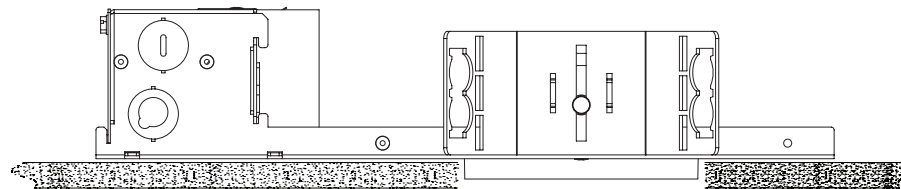
3
x4



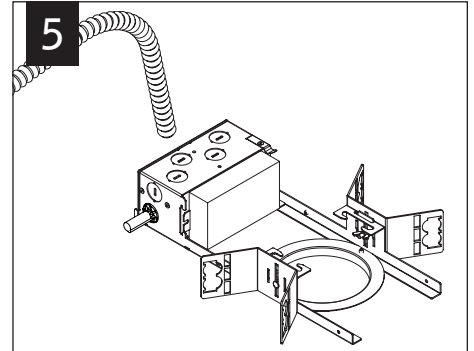
4



minimum ceiling thickness: 1/2"
maximum ceiling thickness: 1-1/2"



5

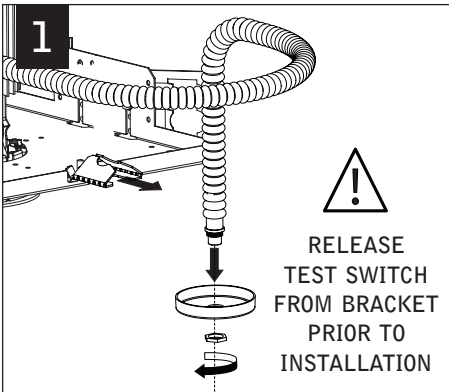


MAKE ELECTRICAL CONNECTIONS

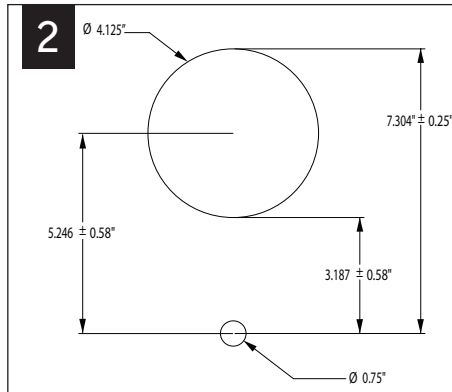
EMERGENCY - REMOTE TEST SWITCH

⚠ ABOVE CEILING ACCESS REQUIRED ⚠

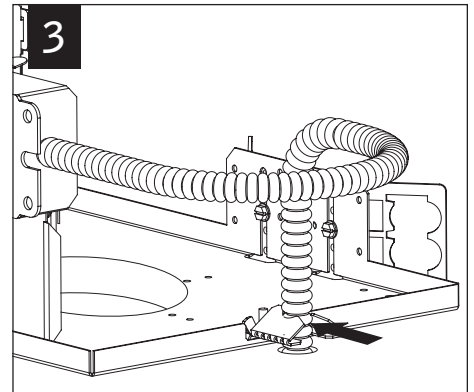
1



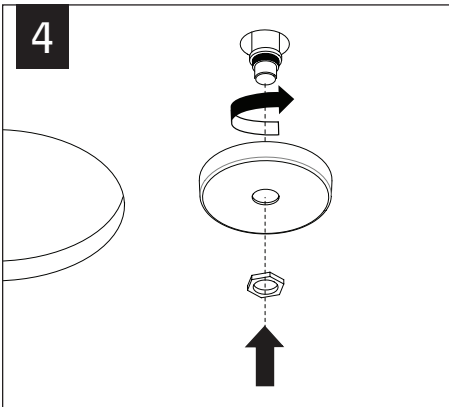
2



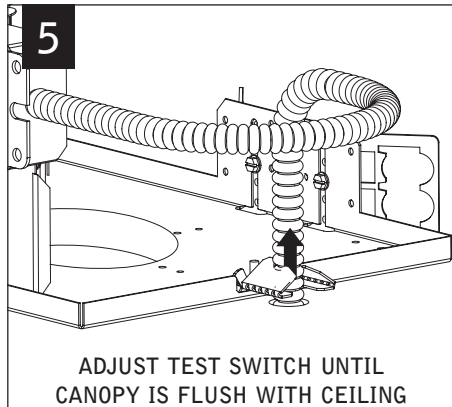
3



4

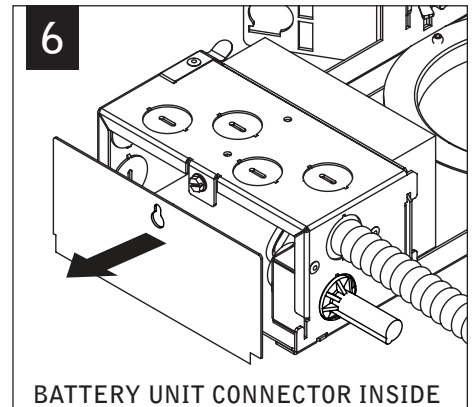


5



ADJUST TEST SWITCH UNTIL
CANOPY IS FLUSH WITH CEILING

6



BATTERY UNIT CONNECTOR INSIDE

Fixtures must be installed by a qualified electrician (check with local and national codes for proper installation).
To prevent electrical shock, disconnect electrical supply before installation or servicing.

7



SEE BATTERY
MANUFACTURER
INSTRUCTIONS



DO NOT MATE BATTERY
UNIT CONNECTOR
UNTIL INSTALLATION
IS COMPLETE AND A.C.
POWER IS SUPPLIED

EM- MOUNTING HEIGHT



SEE BATTERY MANUFACTURER
INSTRUCTIONS

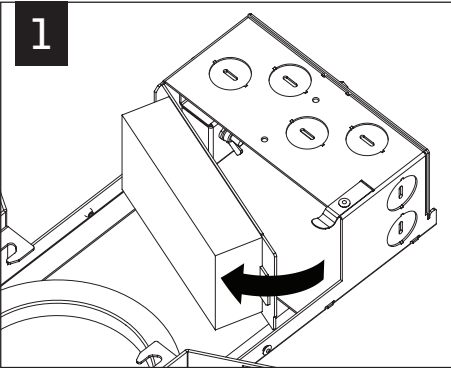
EMERGENCY MAXIMUM MOUNTING HEIGHT:

DOWNLIGHT: 21.4'

WALL WASH: 16.1'

DRIVER SERVICE

1



2

