

# id+ 3.5" square housing

FLC33D | FLC33W



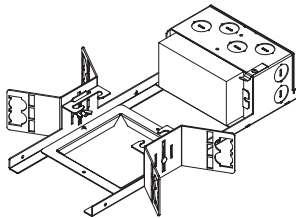
FOCAL POINT™



**LUMINAIRE MUST BE INSTALLED PRIOR TO DRYWALL CEILING.  
ALL GRID LUMINAIRES MUST BE SECURED TO STRUCTURE ABOVE.**



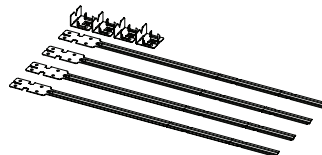
NON-EMERGENCY - THERMALLY PROTECTED, NON-IC



FLC33D | FLC33W



OPTIONAL  
BAR HANGERS SOLD SEPARATELY



KEY



POWER OFF



POWER ON



ATTENTION

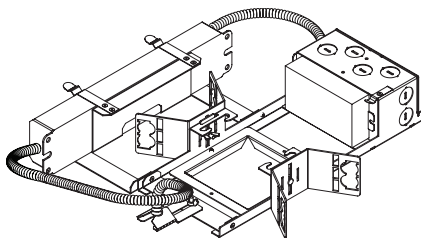


LEVEL



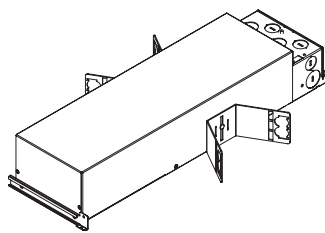
SEE ADDITIONAL  
INSTRUCTIONS

EMERGENCY - REMOTE TEST SWITCH, NON-IC



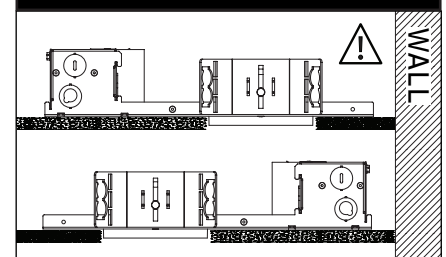
FLC33D | FLC33W

IC/CP

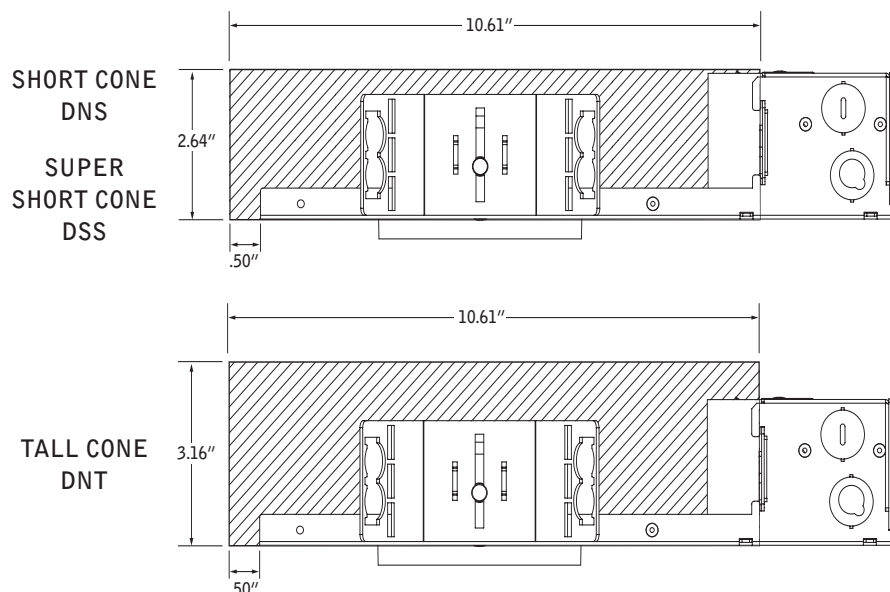


FLC33D | FLC33W

## WALL WASH ORIENTATION

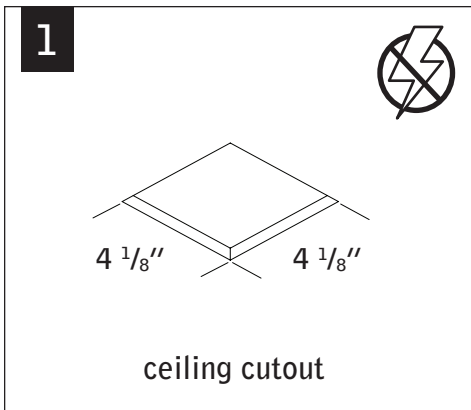


KEEP SHADED AREA FREE FROM OBSTRUCTION ABOVE CEILING

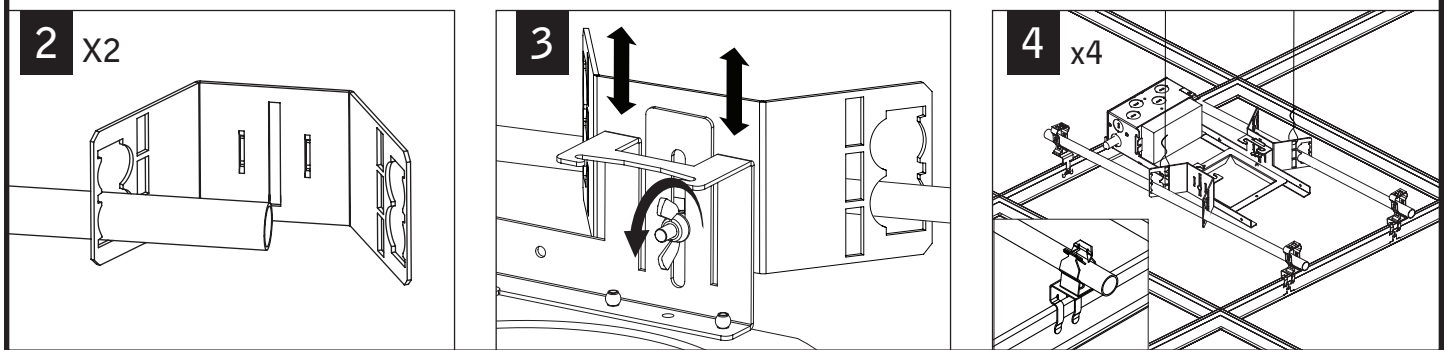


FOR ASTM E-283 AIR-TIGHT  
COMPLIANCE, SEAL IC HOUSING/  
RO TRIM WITH SILICONE CAULKING  
BETWEEN THE EDGE OF THE COLLAR  
AND CEILING MATERIAL. SEAL ALL  
ADDITIONAL HOLES IN HOUSING  
WITH ALUMINUM TAPE.

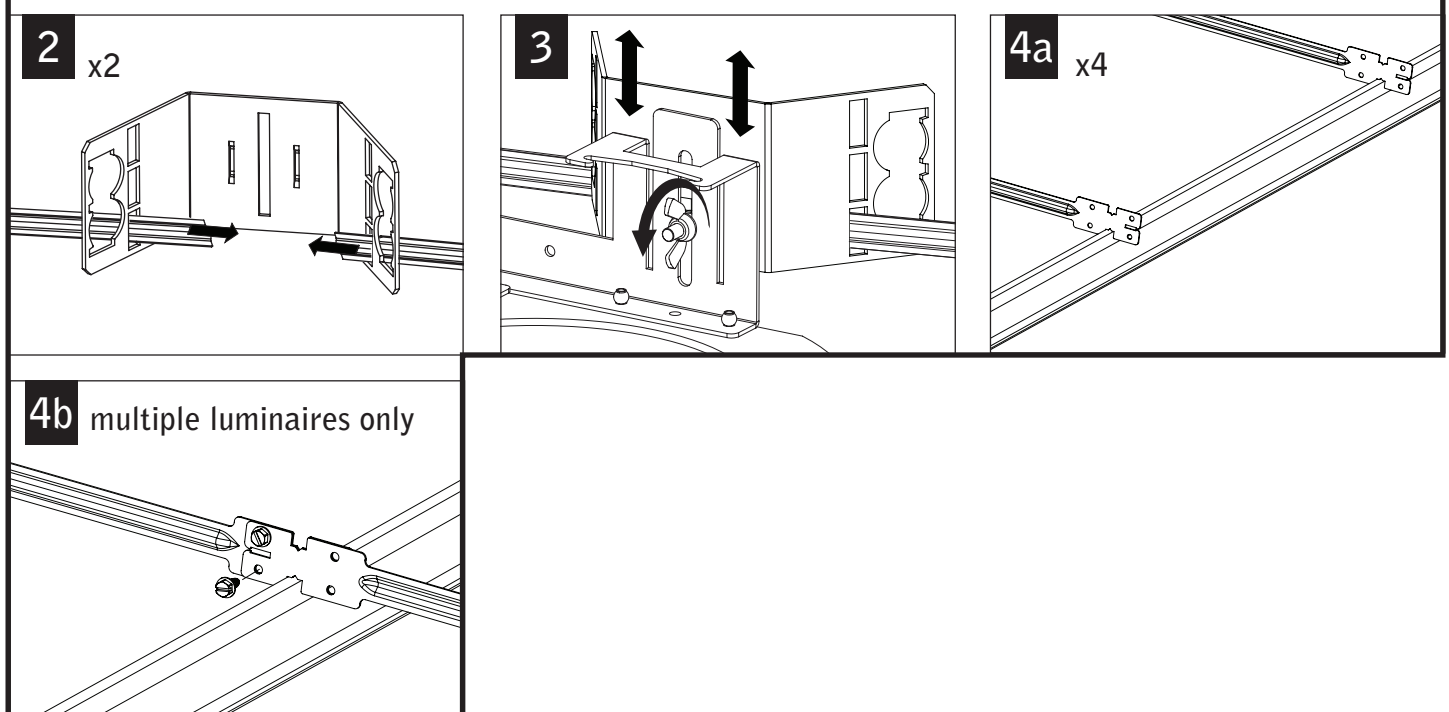
Luminaires must be installed by a qualified electrician (check with local and national codes for proper installation).  
To prevent electrical shock, disconnect electrical supply before installation or servicing.



## GRID - 1/2" CONDUIT & CLIP (BY OTHERS)



## GRID - BAR HANGERS (SOLD SEPARATELY)

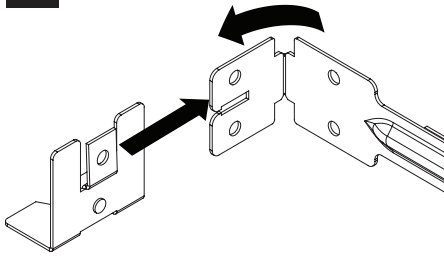


Fixtures must be installed by a qualified electrician (check with local and national codes for proper installation).  
To prevent electrical shock, disconnect electrical supply before installation or servicing.

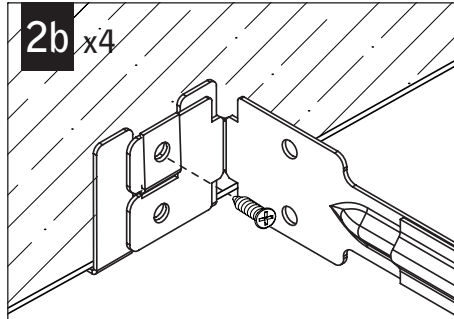
## DRYWALL - BAR HANGERS

### WOOD STUDS

2a x4

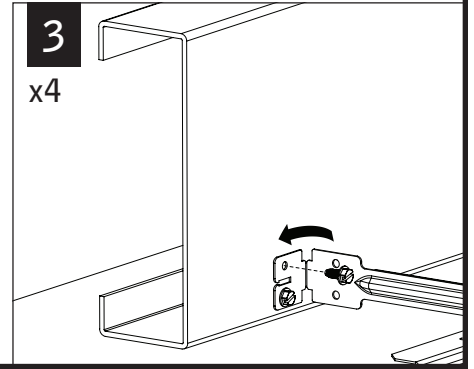


2b x4



### METAL STUDS

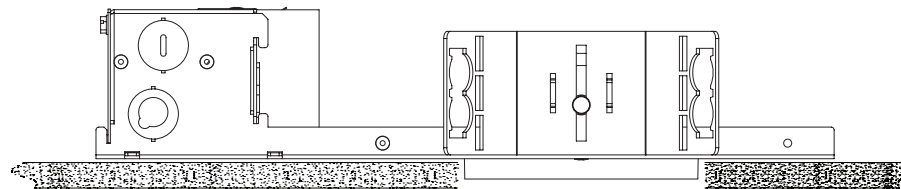
3  
x4



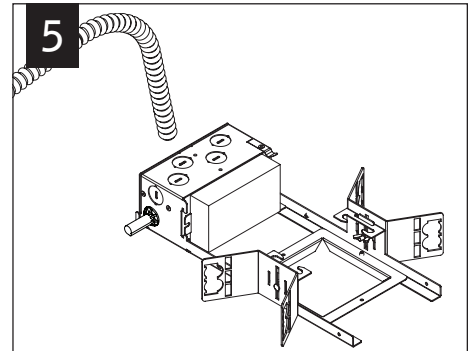
4



minimum ceiling thickness: 1/2"  
maximum ceiling thickness: 1-1/2"



5

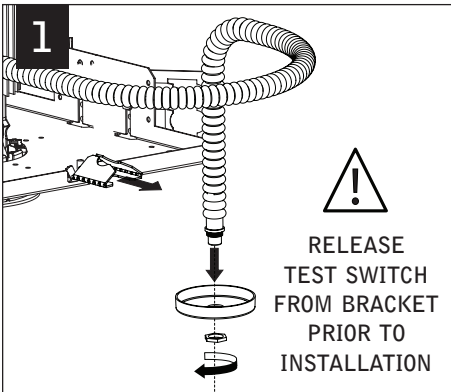


MAKE ELECTRICAL CONNECTIONS

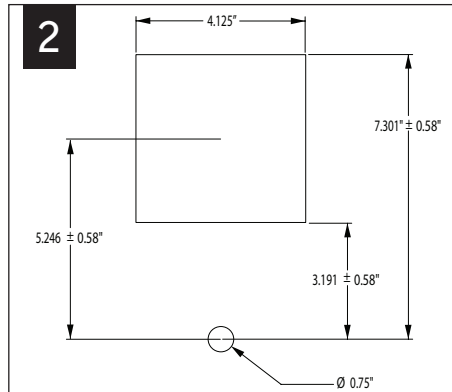
## EMERGENCY - REMOTE TEST SWITCH

⚠ ABOVE CEILING ACCESS REQUIRED ⚠

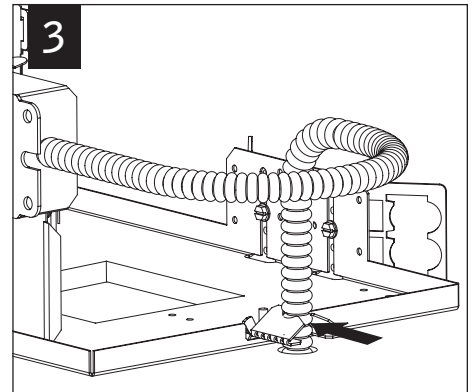
1



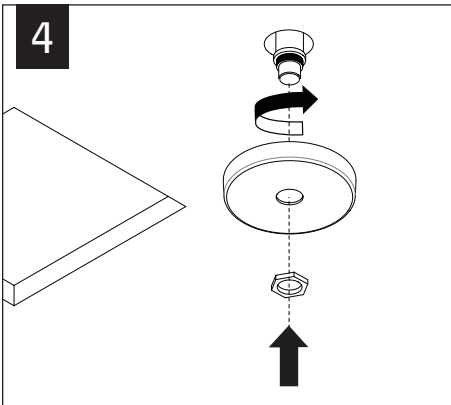
2



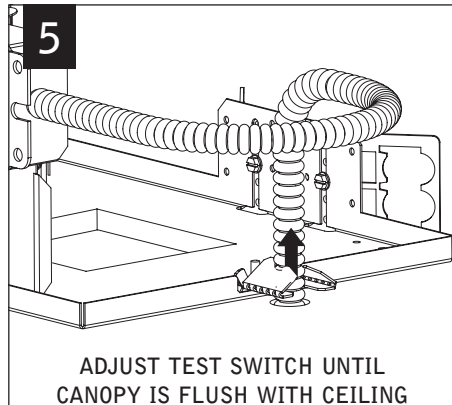
3



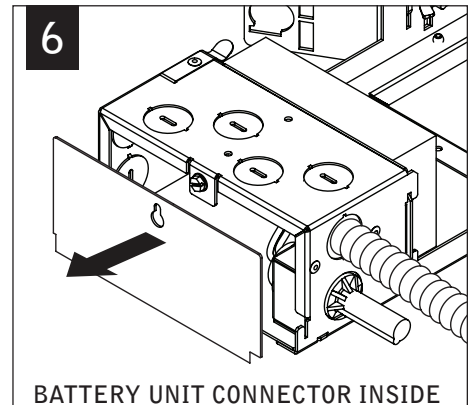
4



5



6



Fixtures must be installed by a qualified electrician (check with local and national codes for proper installation).  
To prevent electrical shock, disconnect electrical supply before installation or servicing.

7



SEE BATTERY  
MANUFACTURER  
INSTRUCTIONS



DO NOT MATE BATTERY  
UNIT CONNECTOR  
UNTIL INSTALLATION  
IS COMPLETE AND A.C.  
POWER IS SUPPLIED

## EM- MOUNTING HEIGHT

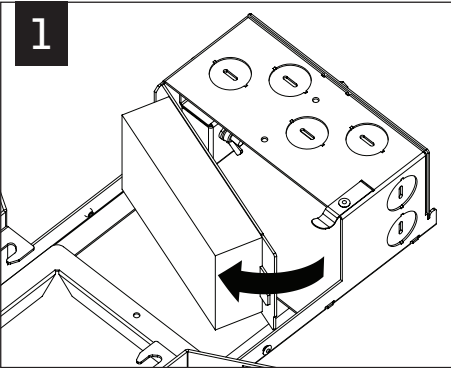


SEE BATTERY MANUFACTURER  
INSTRUCTIONS

EMERGENCY MAXIMUM MOUNTING HEIGHT:  
DOWNLIGHT: 20.7'  
WALLWASH: 15.6'

## DRIVER SERVICE

1



2

