

ID+ 2.5" Round Housing

FLC2D | FLC2W



FOCAL POINT®



BEFORE YOU BEGIN

- Luminaires must be installed by a qualified electrician (check with local and national codes for proper installation).
- To prevent electrical shock, disconnect electrical supply before installation or servicing.
- Contractor is responsible for adequately reinforcing walls and/or ceilings to support fixture weight.
- Focal Point, LLC accepts no responsibility for inadequately reinforced walls and/or ceilings.
- The information contained in this drawing is the sole property of Focal Point, LLC. Any reproduction in part or whole without the written permission of Focal Point, LLC is prohibited.

INSTRUCTION KEY



ATTENTION



SEE ADDITIONAL INSTRUCTIONS



POWER OFF



POWER ON



LEVEL

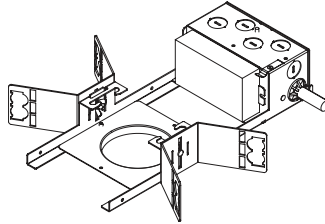


**LUMINAIRE MUST BE INSTALLED PRIOR TO DRYWALL CEILING.
ALL GRID LUMINAIRES MUST BE SECURED TO STRUCTURE ABOVE.**

COMPONENT KEY

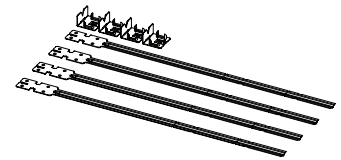
NON-EMERGENCY

THERMALLY PROTECTED, NON-IC



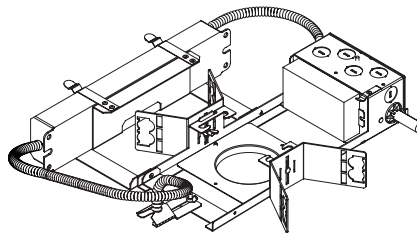
OPTIONAL

BAR HANGERS SOLD SEPARATELY

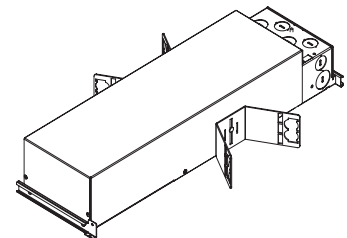


EMERGENCY

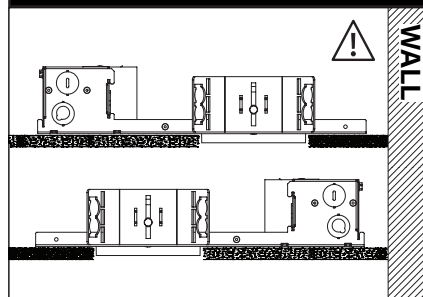
REMOTE TEST SWITCH, NON-IC



IC/CP



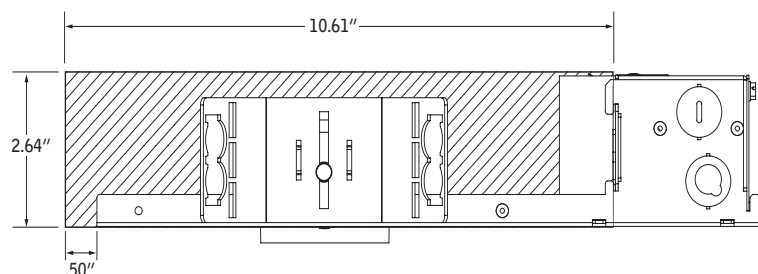
WALL WASH ORIENTATION



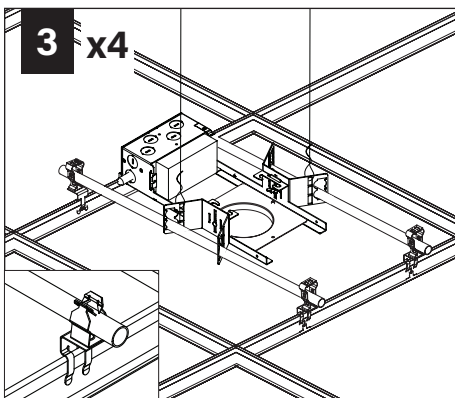
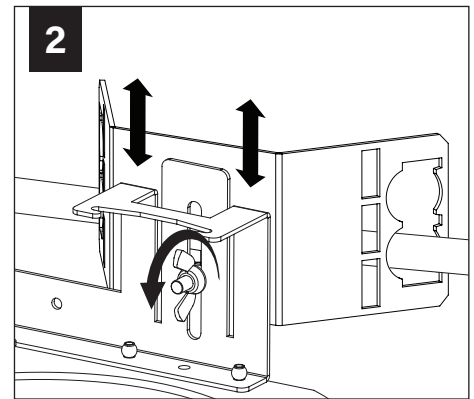
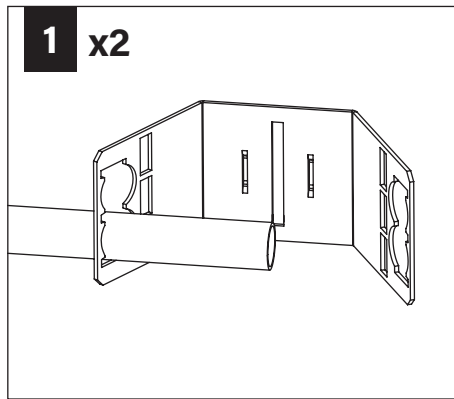
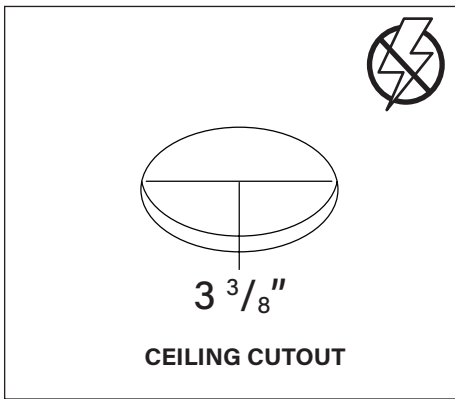
FOR ASTM E-283 AIR-TIGHT COMPLIANCE, SEAL IC HOUSING/RO TRIM WITH SILICONE CAULKING BETWEEN THE EDGE OF THE COLLAR AND CEILING MATERIAL. SEAL ALL ADDITIONAL HOLES IN HOUSING WITH ALUMINUM TAPE.

KEEP SHADED AREA FREE FROM OBSTRUCTION ABOVE CEILING

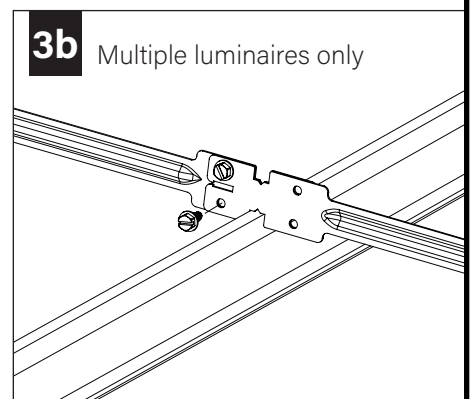
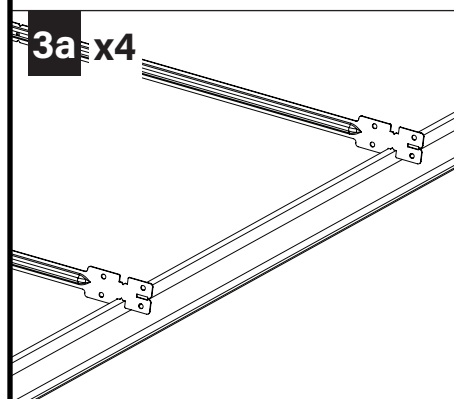
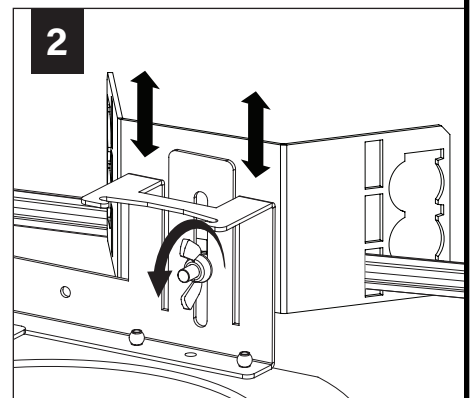
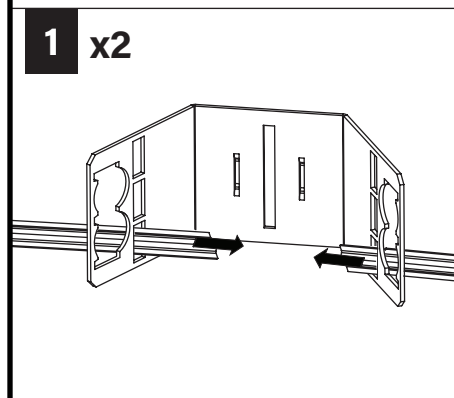
DNS - SHORT CONE
DSS - SUPER SHORT CONE



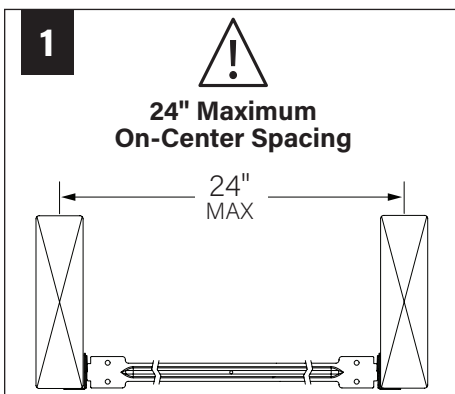
GRID - 1/2" CONDUIT & CLIP (BY OTHERS)



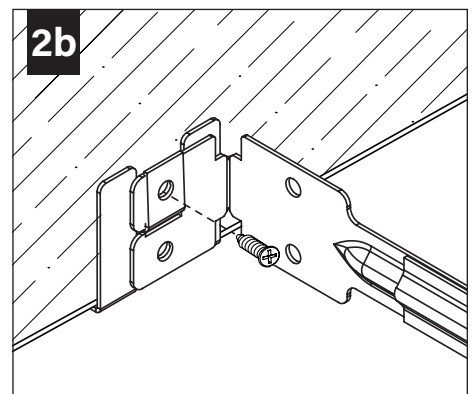
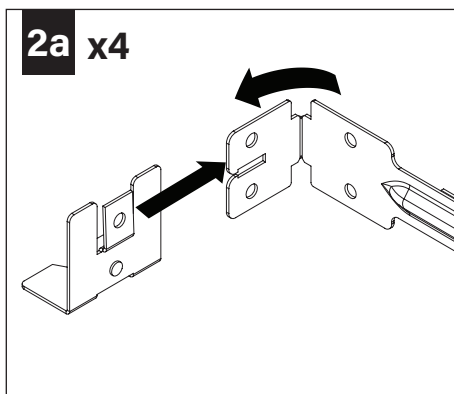
GRID - BAR HANGERS (SOLD SEPARATELY)



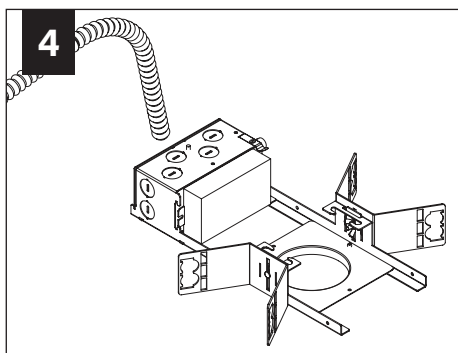
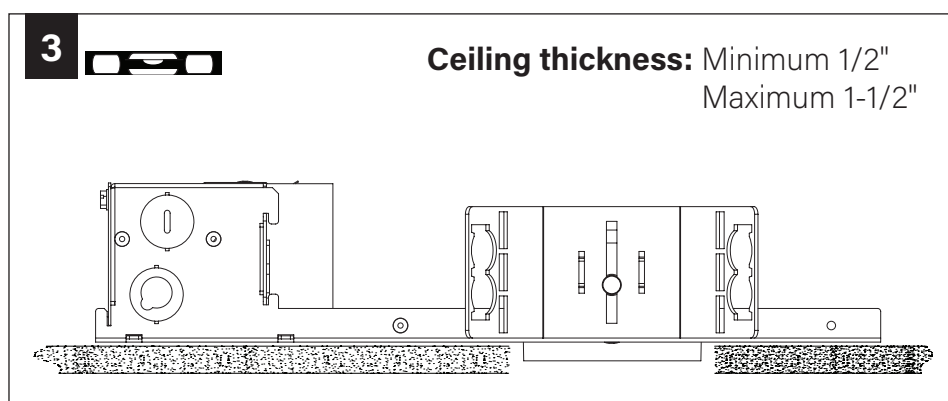
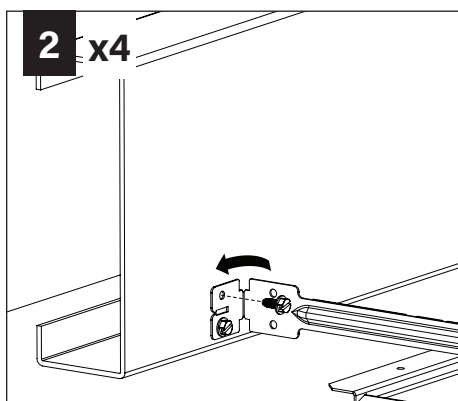
DRYWALL - BAR HANGERS (SOLD SEPARATELY)



WOOD STUDS



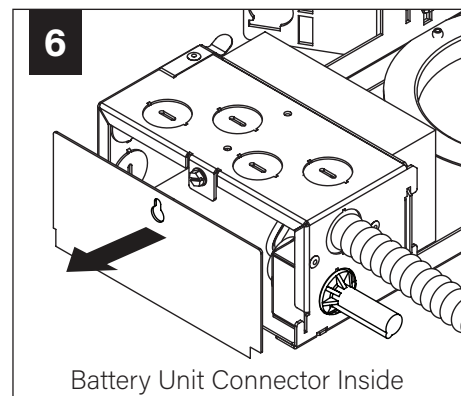
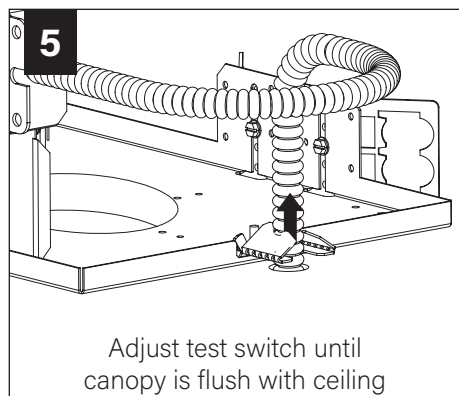
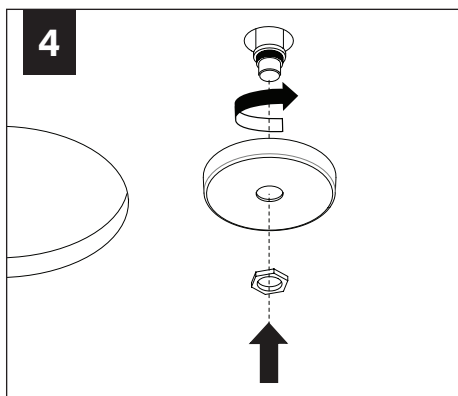
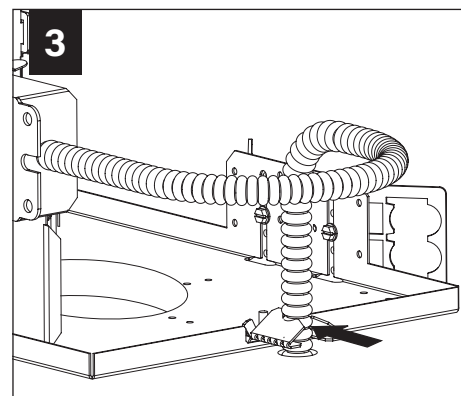
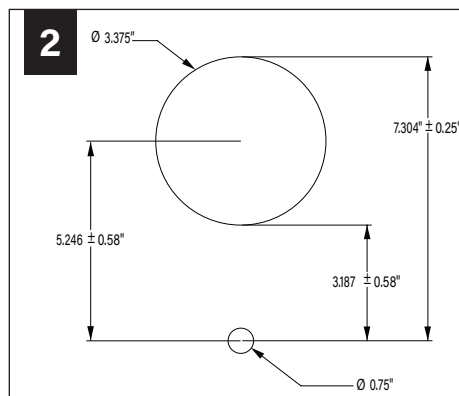
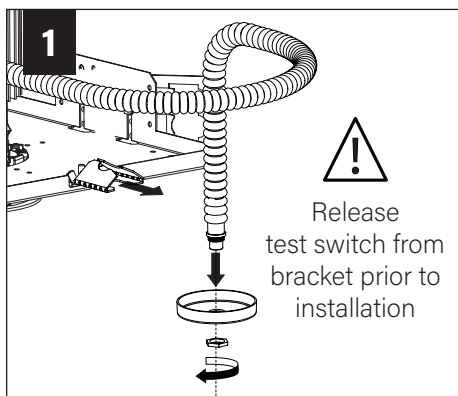
METAL STUDS



MAKE ELECTRICAL CONNECTION

EMERGENCY - REMOTE TEST SWITCH

⚠ ABOVE CEILING ACCESS REQUIRED



7



SEE
BATTERY MANUFACTURER
INSTRUCTIONS.



**DO NOT MATE BATTERY
UNIT CONNECTOR
UNTIL INSTALLATION
IS COMPLETE AND A.C.
POWER IS SUPPLIED**

EM - MOUNTING HEIGHT

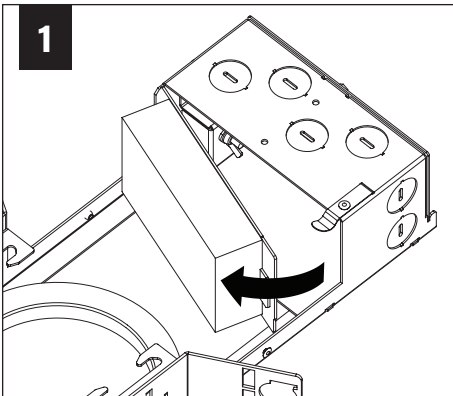


SEE
BATTERY MANUFACTURER
INSTRUCTIONS.

Emergency maximum mounting height:
Downlight: Clear Diffuse & White - 17.2'
Warm Diffuse & Black - 15.5'

DRIVER SERVICE

1



2

