

# Equation<sup>®</sup> 2 1x1

LED

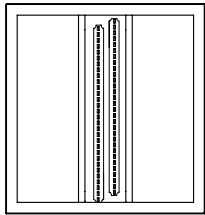
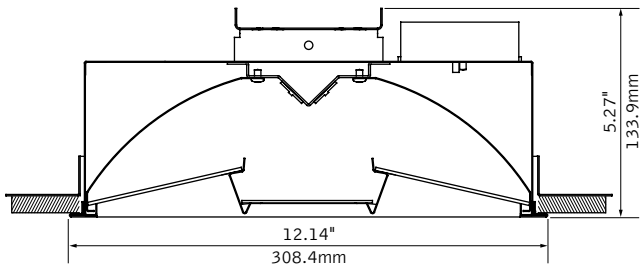


opal acrylic lens



MicroGlow lens

## DIMENSIONAL DATA



2 LED boards

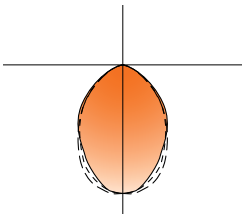
## FEATURES

Equation<sup>™</sup> 2 blends sleek aesthetics with uniform diffuse illumination.

Center diffuser features MicroGlow prismatic lens for brightness control and visual comfort. Opal acrylic center lens may also be specified.

Premium LEDs operate efficiently on a robust module platform to achieve excellent thermal management and reliable operation.

## PERFORMANCE



Opal Acrylic Lens

**Delivered Lumens: 1000lm**

**Total System Watts: 12W**

### PRODUCT OVERVIEW

Lumen Output:	1000-1500lm
Wattage:	12-19W
LPW:	79-83
SDCM:	3

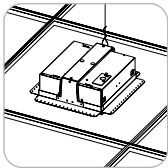
Photometric performance is measured in accordance with IESNA LM-79.  
Visit [focalpointlights.com](http://focalpointlights.com) for complete photometric data.

fixture:

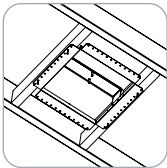
project:

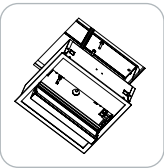
DETAILS

grid



drywall





Grid and drywall cut out dimensions: 12.25" x 11.57"

PERFORMANCE CHART

Delivered Lumens	Tested System Watts	LPW
1000	12	83
1500	19	79

Based on 3500K, 80 CRI. Lumen multipliers: Preferred Light = 0.65, 90+ CRI = 0.87.  
Lumen output may vary +/- 5%. Actual wattage may vary +/- 5%.

ORDERING

Luminaire Series	FEQ2
Equation 2	FEQ2
Nominal Size	11
1' x 1'	11
Shielding	
Opal Acrylic Lens	AC
MicroGlow Prismatic Lens	MG
Lumen Output	
1000 Lumens	1000L
1500 Lumens	1500L
Color Temperature	
2700K, 80+ CRI <b>or</b> 90+ CRI	27K <b>or</b> 927K
3000K, 80+ CRI <b>or</b> 90+ CRI	30K <b>or</b> 930K
3500K, 80+ CRI <b>or</b> 90+ CRI	35K <b>or</b> 935K
4000K, 80+ CRI <b>or</b> 90+ CRI	40K <b>or</b> 940K
Circuits	1C
Single Circuit	1C
Voltage	UNV
UNV 120/277 Volt	UNV
Control System & Dimming Level	
0-10V - 10% Dimming	LD1
0-10V - 1% Dimming	L11
DALI - 1% Dimming	D11
Mounting	U
Universal	U
Factory Options	
Chicago Plenum	CP
6' New York City Flex Whip (120V)	FNY1
6' New York City Flex Whip (277V)	FNY2
6' Flex Whip	FW
(Sensor options available—consult factory)	
Finish	WH
Matte White Housing	WH

## LED System

## Construction

## Optic

## Electrical

