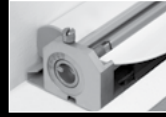
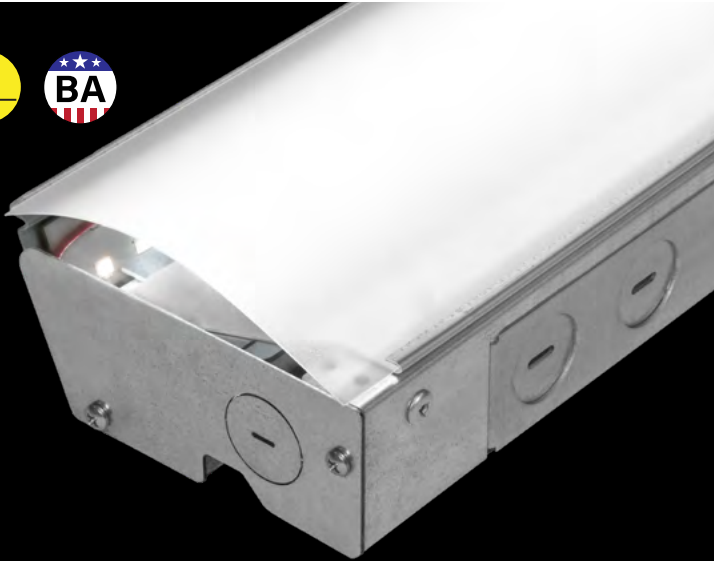


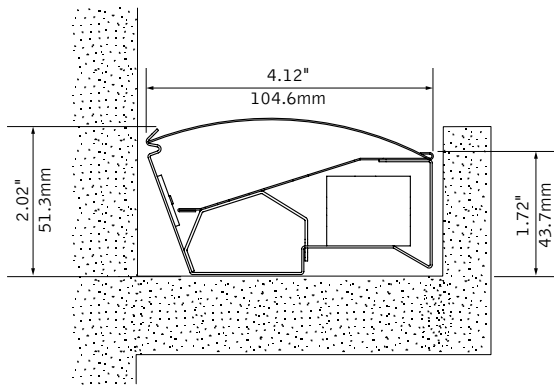
Covert Lite®

FIXED LED COVE LIGHT



companion Covert adjustable

DIMENSIONAL DATA



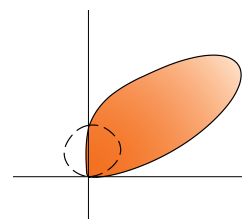
FEATURES

Low profile lens indirect LED luminaire designed for concealed cove applications.

Continuous run lengths available in 1' increments.

Covert Lite® provides pleasing and even illumination that highlights architectural details.

PERFORMANCE



4'

1000 Lumens per foot

Delivered Lumens: 4000lm

Total System Watts: 28.3W

PRODUCT OVERVIEW

Lumen Output:	2000-4800lm
Wattage:	13.8-34.3W
LPW:	145-140
SDCM:	3

Visit focalpointlights.com for complete photometric data.

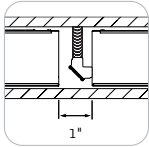
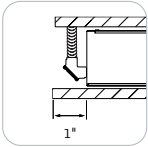
fixture:

project:

DETAILS

Feed locations require an additional 1" at all locations.

Examples: 20ft run 1 feed location = 20ft 1in, 80ft run 2 feed locations = 80ft 2in



Start of run

Mid-run between segments

100ft max. thru-wire per power feed for 500 - 1000 lumens per foot.
72ft max. thru-wire per power feed for 1200 lumens per foot.

SPECIFICATIONS

LED System

Proprietary linear LED module incorporates premium LEDs on a robust platform to achieve excellent thermal management. LEDs are placed to promote a uniform appearance. Available in 2700K, 3000K, 3500K or 4000K with CRI>80 or CRI>90, 3 SDCM.

Construction

One-piece 20 Ga. housing and galvanized end caps. 4' unit weight: 7 lbs.
8' unit weight: 14 lbs.

Optic

Reflector fabricated of low iridescent, semi specular premium grade aluminum.

Electrical

Luminaires are pre-wired with factory installed branch circuit wiring and over-molded quick connects. Standard 120-277V constant current driver includes 0-10V analog dimming. Power factor > .9. 100ft max. thru-wire per power feed for 500 - 1000 lumens per foot. 72ft max. thru-wire per power feed for 1200 lumens per foot.

Labels

UL and cUL listed. Suitable for Dry or Damp Locations, indoor use only.

Lumen Maintenance

Reported: L70 > 60,000 hours

L90 > 60,000 hours

Calculated: L70 at > 480,000 hours

L90 at > 128,000 hours (Derived from EPA TM-21 calculator. Based on typical conditions, consult factory for additional data.)

Reliability

At Focal Point, our products are designed to stand the test of time. Each luminaire is engineered using superior components, manufactured with the utmost care and rigorously tested. Contact us for reliability data.

Warranty

LED system rated for operation in ambient environments up to 25°C. 5-year limited warranty.

4' PERFORMANCE CHART

Lumens per Foot	Delivered Lumens	Tested System Watts	LPW
500LF	2000	13.8	145
750LF	3000	20.3	148
1000LF	4000	28.3	141
1200LF	4800	34.3	140

Based on 3500K, 80 CRI, 4' lengths. Lumen Multiplier: 90+ CRI = 0.87. Lumen output may vary +/- 5%. Actual wattage may vary +/- 5%.

ORDERING

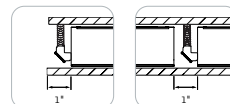
Luminaire Series		FCOLT
Covert Lite	FCOLT	
Profile		HF
Horizontal fixed	HF	
Lumen Output		
500 Lumens per foot	500LF	
750 Lumens per foot	750LF	
1000 Lumens per foot	1000LF	
1200 Lumens per foot	1200LF	
Color Temperature		
2700K, 80+ CRI or 90+ CRI	27K or 927K	
3000K, 80+ CRI or 90+ CRI	30K or 930K	
3500K, 80+ CRI or 90+ CRI	35K or 935K	
4000K, 80+ CRI or 90+ CRI	40K or 940K	
Circuits		1C
Single Circuit	1C	
Voltage		UNV
120/277 UNV Volt	UNV	
Control System & Dimming Level		
0-10V - 10% Dimming	LD1	
0-10V - 1% Dimming	L11	
Lutron Hi-Lume EcoSystem (LDE1) - 1% Dimming	LH1	
DALI - 1% Dimming	D11	
Mounting		CV
Cove	CV	
Factory Options		
Emergency Circuit <small>(See EC Guide for default locations and ordering details.)</small>	_EC	
Finish		NF
No Finish	NF	
Luminaire Length		
<small>(2' minimum length. Each feed location increases overall luminaire length by 1')</small>		
Specify luminaire/row length in ' increments	X'	

Covert Lite® EC Guide



DEFAULT LOCATIONS

- By default, EC are located at the end (last section) of a run when one EC location is specified, and at the start and end when two locations are specified.
- EC illuminate entire sections from 2' to 8' in length.
- Feed location is at start of run. All EC's are fed individually at the end of each fixture segment requiring a 1" space.



1 EC - END OF RUN



Ordering example: FCOLT... **1EC-WH-36ft** (Total run length = 36ft 2in)

2 EC - START & END OF RUN

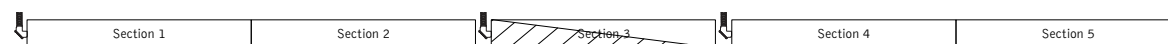


Ordering example: FCOLT... **2EC-WH-36ft** (Total run length = 36ft 3in)

ALTERNATE LOCATIONS AND QUANTITIES

- If more than two locations are required, or specific locations within run need to be specified, indicate in the ordering string.

ONE EC IN 3RD SECTION



Ordering example: FCOLT... **1EC-3-WH-40ft** (Total run length = 40ft 3in)

THREE EC IN 1ST, 3RD AND 6TH SECTIONS



Ordering example: FCOLT... **3EC-1-3-6-WH-48ft** (Total run length = 48ft 5in)

CUSTOM LENGTHS

- If partial illumination of emergency section is required, indicate quantity in ordering string and partial illumination in Order Notes. Drawing required.
- Longer lead times may apply.

Run length (ft)	Housing Configuration Section Lengths
9	5+4
10	6+4
11	7+4
12	8+4
13	8+5
14	8+6
15	8+7
16	8+8
17	8+5+4
18	8+6+4
19	8+7+4
20	8+8+4
21	8+8+5
22	8+8+6
23	8+8+7
24	8+8+8
25	8+8+5+4
26	8+8+6+4
27	8+8+7+4
28	8+8+8+4
29	8+8+8+5

Run length (ft)	Housing Configuration Section Lengths
30	8+8+8+6
31	8+8+8+7
32	8+8+8+8
33	8+8+8+5+4
34	8+8+8+6+4
35	8+8+8+7+4
36	8+8+8+8+4
37	8+8+8+8+5
38	8+8+8+8+6
39	8+8+8+8+7
40	8+8+8+8+8
41	8+8+8+8+5+4
42	8+8+8+8+6+4
43	8+8+8+8+7+4
44	8+8+8+8+8+4
45	8+8+8+8+8+5
46	8+8+8+8+8+6
47	8+8+8+8+8+7
48	8+8+8+8+8+8

Standard run configurations, consult factory for custom configurations.