

# CONNECTED<sup>®</sup> SOLUTIONS



## The future of lighting has arrived with Connected Solutions

Intelligent lighting systems that save energy, reduce operating costs, and increase tenant well-being are now a reality! The Connected Solutions program enables a vast selection of cutting-edge, energy-efficient luminaires to interface with advanced building lighting control systems, providing personalized control and a host of advantages for both tenants and building managers. These smart luminaires go beyond illumination, helping to achieve beautiful, harmonious spaces that connect people to their environment.



**FOCAL POINT™**

Bringing It All To Light™





## What is Connected Solutions?

Connected Solutions uses the Internet of Things (IoT) and leverages the electrical power and ubiquitous presence of lighting to collect valuable data, allowing for smart building management. Integration with building management systems through wired or wireless networks provides the ability to monitor and modulate light levels and temperature, thus reducing energy costs and increasing tenant well-being in new construction or retrofit applications.

## Benefits of Connected Solutions

- Allow for daylight harvesting, occupancy sensing and/or temperature control
- Integrate with new and existing whole building lighting control systems
- Data used to monitor and modulate for maximum efficiency
- Adapt to individual preferences with scene control functionality
- Increase occupants' comfort and well-being
- Reduce energy consumption and maintenance costs
- Increase safety and security
- Reduce carbon footprint
- Meet latest building and energy codes
- Individually, digitally addressable to allow for re-zoning without rewiring



## Our Partners

Our multi-partner program allows Connected Solutions enabled luminaires to integrate with several building lighting control systems to meet the needs of each project. A variety of sensors, drivers and other components can be specified that allow the luminaires to communicate with wired and wireless networks, enabling energy savings, reducing costs and maximizing occupants' comfort.



WATTSTOPPER®





## OCCUPANCY SENSING

Occupancy Sensing is an energy management technique used to turn lights on and off based on occupancy. The intuitive technology detects motion within a space, signaling if light should be on or off, to save energy and comply with building codes.

### BENEFITS:

- Cost savings
- Automatic on/off control of lights
- Help to meet building and energy codes/standards

## LUMINAIRE SELECTION

A broad range of Connected Solutions enabled luminaires are offered: recessed linear, architectural troffers and suspended luminaires for use in various applications.



Luna®



Amica® 2



Equation® 2



Facetta



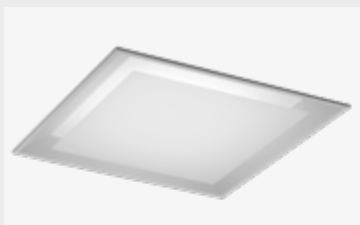


# DAYLIGHT HARVESTING

Daylight Harvesting is an energy management technique used to control the electric light levels based on the amount of natural daylight in the space. These systems offset the amount of electric lighting needed to properly illuminate a space, reducing energy consumption.

## BENEFITS:

- Cost savings
- Automatic control of light levels
- Increase in health and well-being due to exposure to proper amount of natural and electric light
- Enhance visual comfort in educational and learning environments
- Help to meet building and energy codes/standards



Zephyr



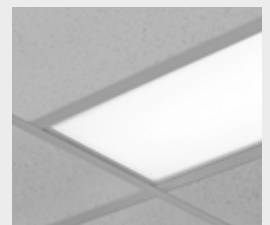
Avenue 6



Seem 2



Seem 4



Seem 6



# TEMPERATURE REPORTING

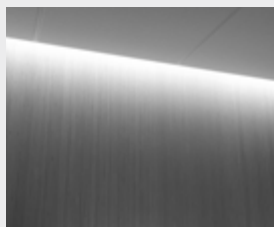
Temperature Reporting is an advanced energy management technique that senses environmental changes and automatically reports the temperature. The data is used to monitor and adjust to the optimal temperature for the occupants' comfort and to reduce energy consumption.

## BENEFITS:

- Cost savings
- Automatic control of lighting and temperature
- Reduces environmental impact



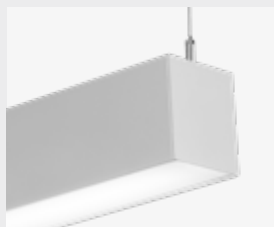
Seem 2



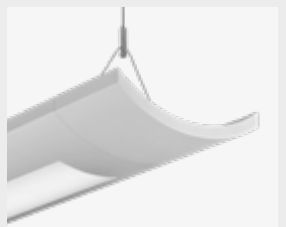
Seem 4



Seem 2



Seem 4



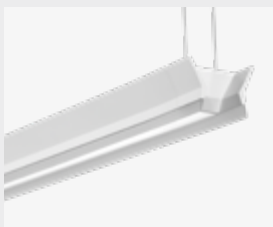
Verve IV



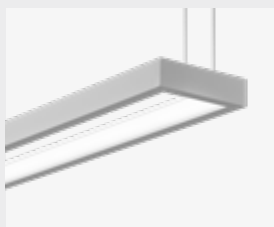
Connected Solutions from Focal Point is a vast selection of luminaires that integrate with popular intelligent building lighting management systems, bringing together luminaires and smart controls to create smarter building solutions.†

Connected Solution	Ordering Code	Protocol	Compatible Networks*	Occupancy & Daylight	Temperature Reporting	Communication to Luminaire
 <b>legrand®</b> <b>WATTSTOPPER®</b>	DLM1	DLM	DLM	Enabled¹	No	Wired
	LMFS1	DLM Wireless	DLM	Integrated²	No	Wireless
	LMFSD					
 <b>COOPER</b> Lighting Solutions	WLXP	WaveLinx Wireless	WaveLinx Pro Trellix	Integrated²	No	Wireless (WaveLinx Pro Wireless Area Controller)
 <b>CRESTRON</b>	L11	0-10V	Crestron Züm Wireless & SpaceBuilder	Enabled¹	No	Wired
 <b>ENCELIUM</b>	CLM1	ZigBee	Encelium X Light Management System	Enabled¹	No	Wireless
 <b>LUTRON®</b>	LAW1	DALI, 0-10V	Athena Wireless	Enabled¹	No	Wireless
	LAWS	DALI, 0-10V	Athena Wireless	Integrated²	No	Wireless
	LH1	EcoSystem	Quantum, Energi Savr Node, Energi TriPak	Enabled¹	No	Wired
 <b>nLIGHT</b>	NLT1	nLight	nLight	Enabled¹	No	Wired
 <b>NX LIGHTING CONTROLS™</b>	NXE1	NX	NX Distributed Intelligence	Enabled¹	No	Wired

\*Not all compatible networks may be listed. †All Connected Solutions luminaires require a compatible building control system. Controls systems supplied by others. ¹Enabled: Fixture supplied with a Node/ Controller. Sensor to be provided by others. ²Integrated: Fixture supplied with an installed Sensor for all products except Facetta, Zephyr, Seem 2 Perimeter, Seem 4 Perimeter, Nera and Obscura which are supplied with a sensor to be installed in a remote location by others.



Obscura®



Nera®



Nera Pendant




Twelve



Dart





For more information about Connected  
Solutions visit [www.focalpointlights.com/ConnectedSolutions](http://www.focalpointlights.com/ConnectedSolutions)



©2026 Focal Point, LLC. 4141 S Pulaski Road, Chicago, IL 60632 | T 773.247.9494 | [www.focalpointlights.com](http://www.focalpointlights.com) All rights reserved. "Focal Point", "Bringing It All To Light", "Amica", "Avenue", "Equation", "Luna", "Nera", "Obscura", "Seem", "Verve", "Zephyr", the Connected Solutions graphics and the light-ray graphic are trademarks or registered trademarks of Focal Point, LLC. Visit [www.focalpointlights.com](http://www.focalpointlights.com) for specification and other details on our entire catalog.