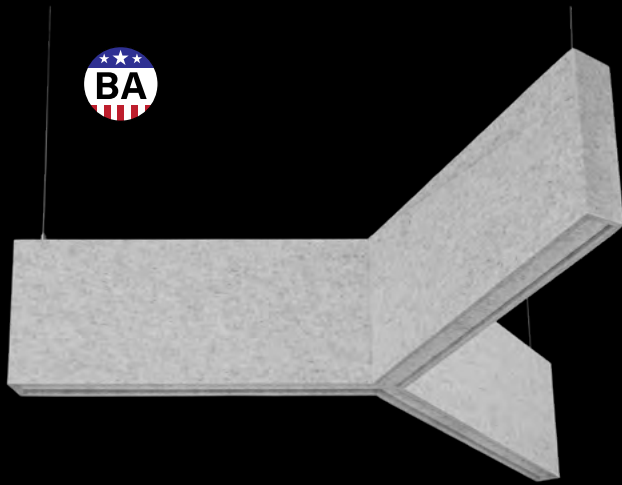
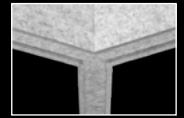


Seem® 1 Acoustic Trio

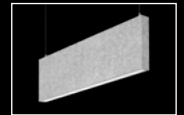
UNLIT



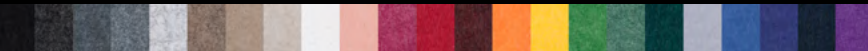
The Naturals collection - Gray Elm direct shown
Cosmic Collection - Green Quasar shown



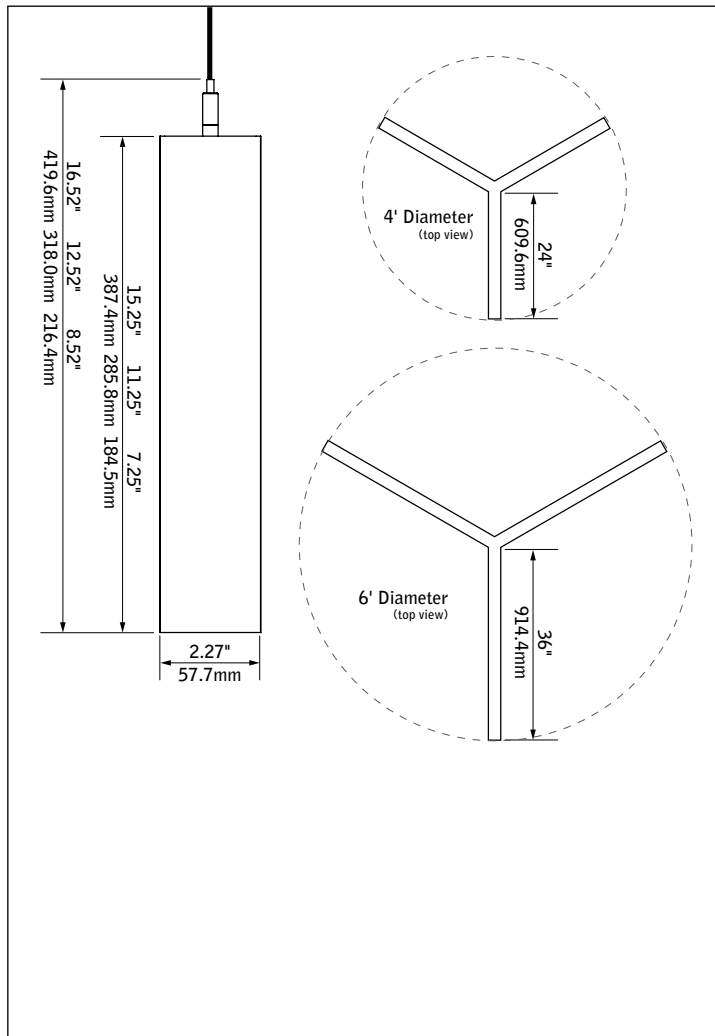
Center detail



Seem 1 Acoustic
companion



DIMENSIONAL DATA



FEATURES

Narrow, sound absorbing 1.5" aperture 'Y' shaped acoustic pendant. Available in 4' and 6' diameters with 8", 12", and 16" nominal housing heights.

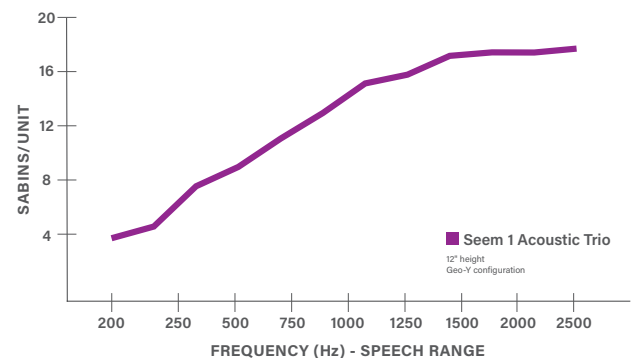
Engineered to maximize sound absorption and to create a statement as a stand-alone pendant, in a cluster or as part of a system when paired with Seem 1 Acoustic.

AirCore™, patent pending, eco-friendly technology that maximizes sound absorption and reduces ecological impact.

Wide range of color options provides design flexibility and personalization for any project.

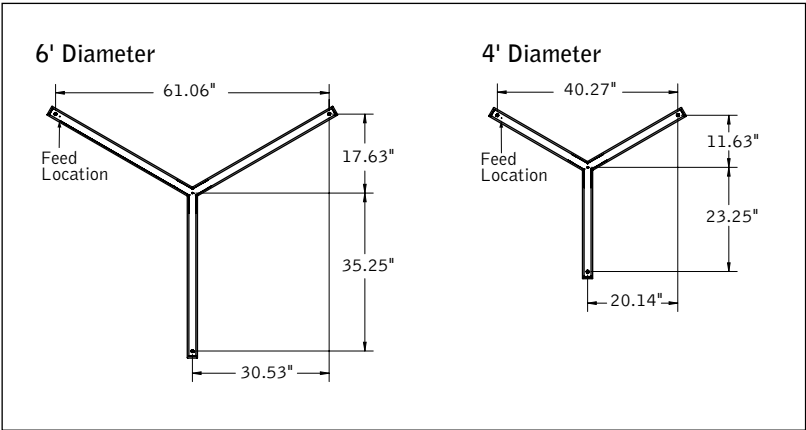
Available in a range of curated printed finish options, including The Naturals and Cosmic.

ACOUSTIC PERFORMANCE



All products were tested in multiple configured arrays. Total absorption will vary based on configuration. Please refer to ASTM C423 reports for more information.

MOUNTING DETAILS



SPECIFICATIONS
Acoustic Material

Content	Housing material is 100% polyester containing up to 50% of recycled plastic bottles (PET felt) and is moisture resistant. See page 3 for color offering. Acoustic material colors are subject to change without notice. For the most current color options, please visit focalpointlights.com/acousticsolutions. Printed finishes such as The Naturals and Cosmic may leave the base material color visible on edges, depending on the product. Consult factory for more information. Lead times may vary depending on color.
Cleaning and Care	Remove dust and debris with a clean, soft, lint-free cloth or vacuum
PET Thickness	9mm
Surface Burning Characteristics	ASTM E84 Class A / CAN ULC S102 Flame Spread: 0 Smoke Development Index: 300
Colorfastness	AATCC 16A Option 3 Class 4 minimum at 40 hours

Acoustic Performance

Acoustic testing is performed on all Focal Point acoustic products and varies based on installation and configuration. ASTM C423 test reports can be downloaded from focalpointlights.com. Contact acoustic.solutions@focalpointlights.com for technical questions.

Sabins	Sabins is a unit of sound absorption. It measures how well one square foot of material absorbs sound. Focal Point has averaged the Sabins per unit at four specific frequency bands representing the human speech range (250, 500, 1000, 2000 Hz) to determine the Sabins per product. Sabins/unit varies based on configuration: Geo Y Configuration = 12.24 Sabins Staggered Hex Configuration = 12.07 Sabins
--------	--

Labels

Suitable for Dry Locations, indoor use only.

Weight

12" height, 4' diameter = 16.2lbs. 12" height, 6' diameter = 24.3lbs.

Canopy

Polyester powder coat applied over a multi-stage pre-treatment. Canopy white as standard.

Reliability

At Focal Point, our products are designed to stand the test of time. Each product is engineered using superior components, manufactured with the utmost care and rigorously tested.

Warranty

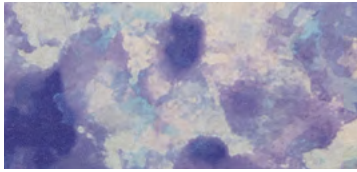
5-year limited warranty.

ORDERING		AUSM1TP
Luminaire Series		
Seem 1 Acoustic Trio Unlit	AUSM1TP	
Nominal Size		
4' Diameter	4	
6' Diameter	6	
Shielding		SD
Solid PET	SD	
Height		
(heights are nominal)		
8" nominal	8	
12" nominal	12	
16" nominal	16	
Mounting		
(Mounting hang kits ship with order)		
24" Cable Suspension	J24	
48" Cable Suspension	J48	
96" Cable Suspension	J96	
120" Cable Suspension	J120	
(Specify canopy color White (WH), Black (BK) or Titanium Silver (TS). Example: J24WH.)		
(Consult factory for sloped ceiling applications)		
Acoustic Panel Color		
See page 3 for color offering		
(Consult factory for multi-colored units)		

Acoustic Materials



COSMIC (25% SCALE)



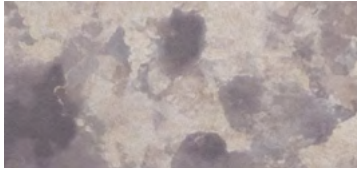
BLUE STAR

BSR



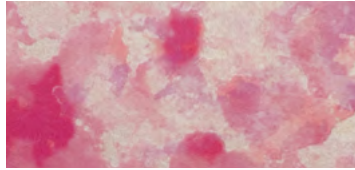
GREEN QUASAR

GQR



MOON ROCK

MRK



PINK NEBULA

PPN



SOLAR FLARE

SRF

THE NATURALS (25% SCALE)



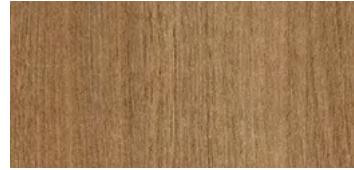
LIGHT OAK

LOK



GRAY ELM

GRE



CHESTNUT

CHT



WALNUT

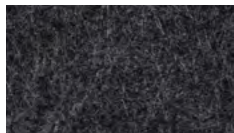
WLT

STANDARD PET



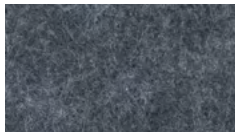
PURE BLACK

PBK



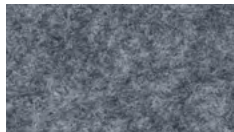
CHARCOAL GRAY

CHG



SLATE

SLT



SHADOW GRAY

SDG



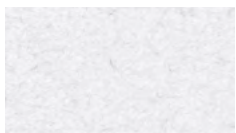
SILVER GRAY

SLG



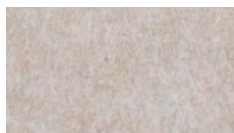
PEARL ICE

PIC



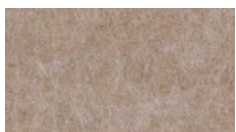
CLASSIC WHITE

CWH



NATURAL LINEN

NTL



HAZELWOOD

HZW

PREMIUM PET



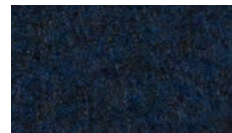
CORNFLOWER BLUE

CFB



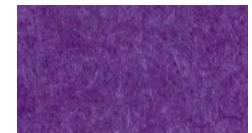
DENIM BLUE

DNB



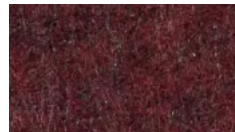
MIDNIGHT BLUE

MNB



DEEP PURPLE

DPP



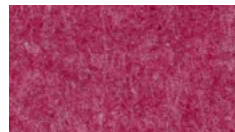
BRICK RED

BRD



CHERRY RED

CHR



BERRY

BRY



BLUSH

BLS



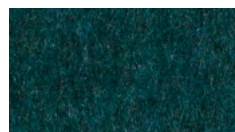
CARROT

CRT



PINEAPPLE

PNA



DEEP WATER

DWT



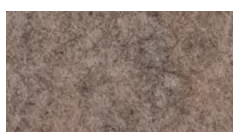
SEAFOAM

SFM



EMERALD GREEN

EMG



LIMESTONE

LMS

Slight color variations are inherent to the PET felt manufacturing process. Color renditions on screens vary due to display settings and lighting conditions.

Order samples at focalpointlights.com/Samples

Declare.

PET
Focal Point, LLC

Final Assembly: Chicago, Illinois, USA

Life Expectancy: 30 Year(s)

End of Life Options: Salvageable/Reusable in its Entirety, Recyclable (100%)

Ingredients:

Polyethylene terephthalate: PET; N, N'-Ethylene bisstearamide: Octadecanamide, N,N'-1,2-ethanediylbis-; Stearic Acid: Stearic Acid; Antioxidant 1076: Benzenepropanoic acid, 3,5-bis(1,1-dimethylethyl)-4-hydroxy-, octadecyl ester; Antioxidant KY-405: Benzenamine, 4-(1-methyl-1-phenylethyl)-N-[4-(1-methyl-1-phenylethyl)phenyl]; Titanium Dioxide: Titanium dioxide

Living Building Challenge Criteria:

I-13 Red List:

■ LBC Red List Free % Disclosed: 100% at 100ppm
□ LBC Red List Approved VOC Content: Not Applicable
□ Declared

I-10 Interior Performance: Not Compliant
I-14 Responsible Sourcing: Not Applicable

FPL-0001

EXP: 01 JUN 2026

Original Issue Date: 2020

INTERNATIONAL LIVING FUTURE INSTITUTE™ living-futures.org/declare/