

Seem® 1 Acoustic Unlit

AUSM1S-NH (No Hardware)



BEFORE YOU BEGIN

- Products must be installed by a qualified professional (check with local and national codes for proper installation).
- Contractor is responsible for adequately reinforcing walls and/or ceilings to support fixture weight.
- Focal Point, LLC accepts no responsibility for inadequately reinforced walls and/or ceilings.
- The information contained in this drawing is the sole property of Focal Point, LLC. Any reproduction in part or whole without the written permission of Focal Point, LLC is prohibited.



MOUNTING HARDWARE PROVIDED BY OTHERS

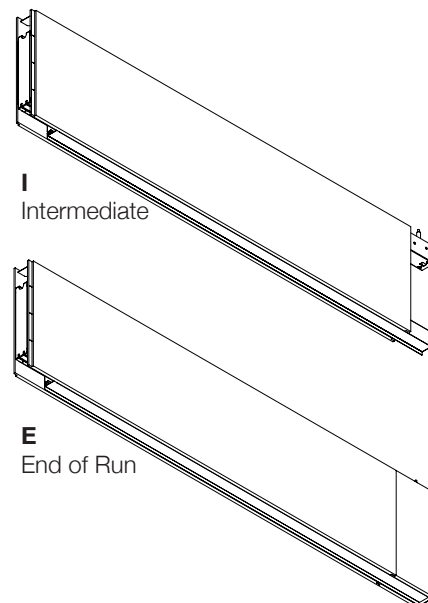
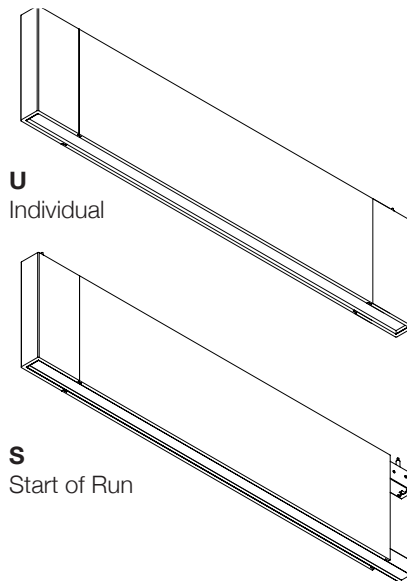
#1 PHILLIPS DRIVER BIT
REQUIRED FOR INSTALLATION
OF JOINED RUNS

INDIVIDUAL UNITS **CANNOT BE JOINED** IN THE FIELD

SEEM 1 ACOUSTIC UNITS
CANNOT BE CUT TO LENGTH
IN THE FIELD

COMPONENT KEY

FOCAL POINT



MOUNTING HARDWARE BY OTHERS

1/4"-20 PEM NUT INSTALLED IN BLADE
THREAD ENGAGEMENT REQUIREMENTS
MINIMUM DEPTH: 0.375"
MAXIMUM DEPTH: 1.86"

SHIPPED INSTALLED



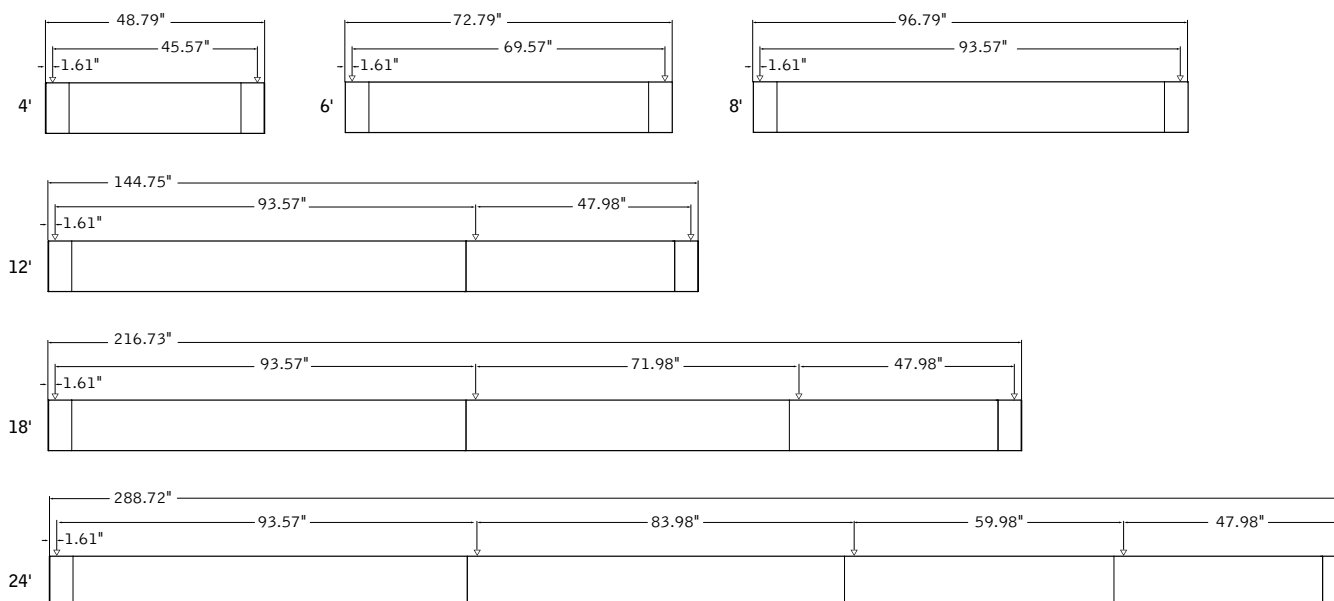
Access
Cover Screw
(72026)

SHIPPED IN HARDWARE BAG



Joiner
Screw
(700295)

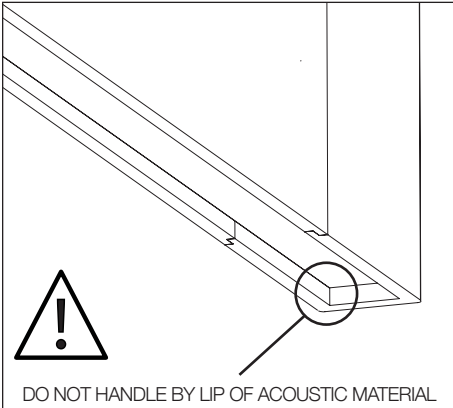
MOUNTING LOCATIONS



↓ MOUNTING LOCATION

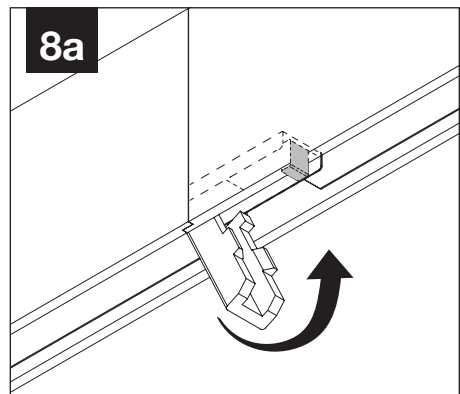
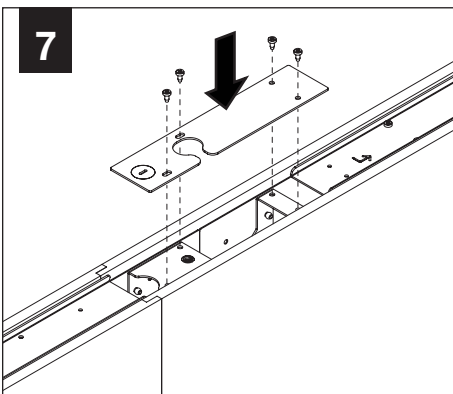
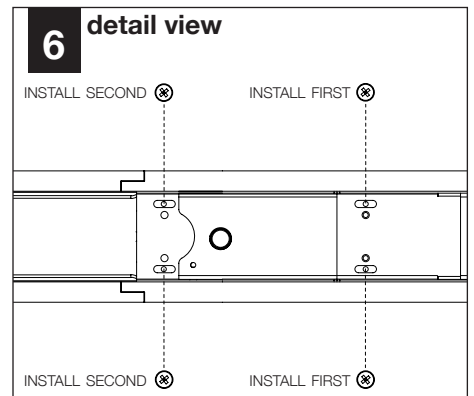
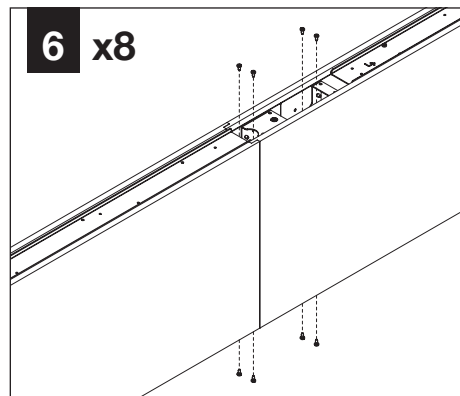
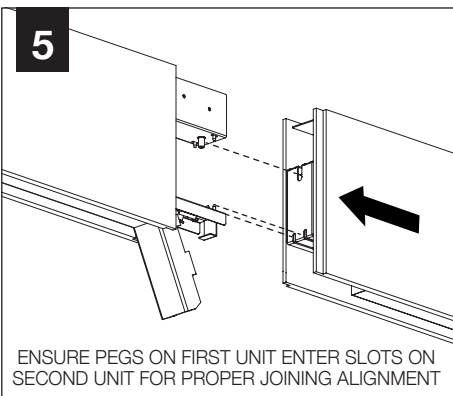
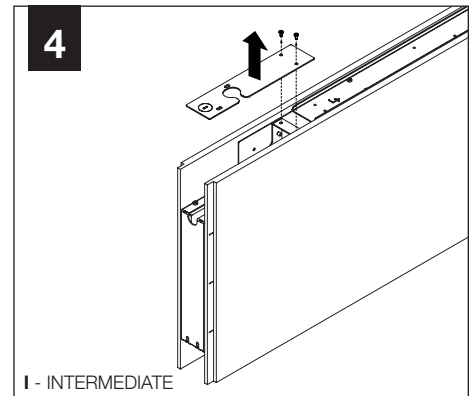
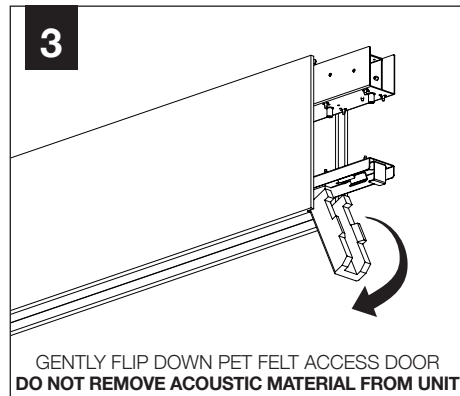
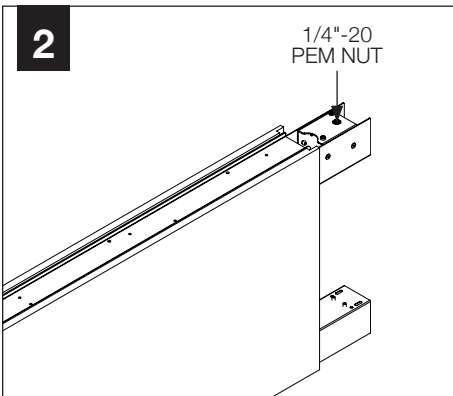
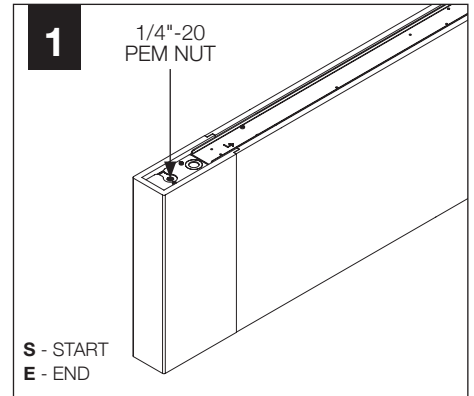


CONFIGURATIONS ARE RUN SPECIFIC, PLEASE CONSULT FACTORY DRAWINGS BEFORE BEGINNING INSTALLATION.



I

FOR INDIVIDUAL UNITS
SEE STEP 1



GENTLY FLIP UP PET FELT ACCESS DOOR UNTIL IT
MEETS THE INTERNAL STOPPING MECHANISM

