

# AirCore Blade®

AUABS

AirCore Technology™



FOCAL POINT®



## BEFORE YOU BEGIN

- Products must be installed by a qualified professional (check with local and national codes for proper installation).
- Contractor is responsible for adequately reinforcing walls and/or ceilings to support fixture weight.
- Focal Point, LLC accepts no responsibility for inadequately reinforced walls and/or ceilings.
- The information contained in this drawing is the sole property of Focal Point, LLC. Any reproduction in part or whole without the written permission of Focal Point, LLC is prohibited.

## INSTRUCTION KEY



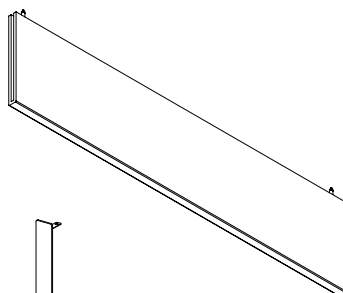
ATTENTION



SEE ADDITIONAL INSTRUCTIONS

## COMPONENT KEY

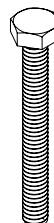
### FOCAL POINT



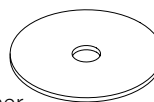
Endcap

### DIRECT TO STRUT BAGGED HARDWARE

Bolt  
1/4-20 x 2.25"  
(700387)

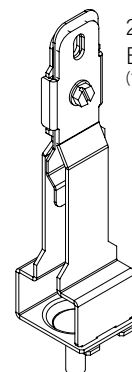


Flat  
Washer  
1.5" x .281" x .062"  
(75221)

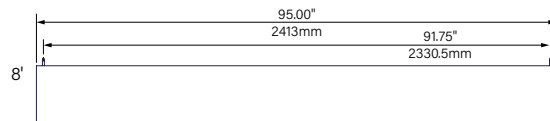
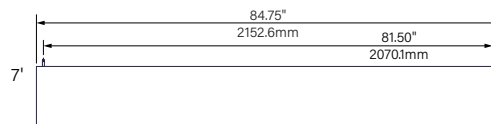
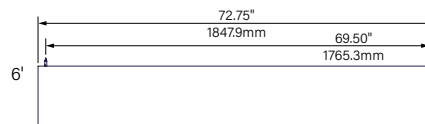
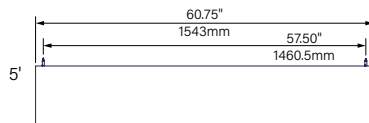
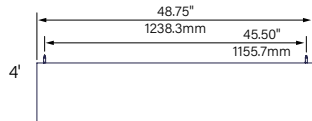
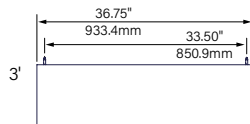
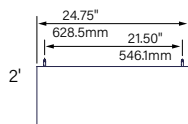


### DIRECT TO GRID BAGGED HARDWARE

2" Grid  
Bracket  
(14469)



### MOUNTING LOCATIONS



**CANNOT BE JOINED  
IN THE FIELD**

**CANNOT BE CUT TO LENGTH  
IN THE FIELD**



### SUSPENDED INSTALLATION:

DRYWALL/HARD SURFACE - PG. 3  
CEILING STRUT - PG. 3  
GRID CEILING - PG. 4

### DIRECT INSTALLATIONS:

DIRECT TO STRUT - PG. 4  
DIRECT TO GRID - PG. 5

## SUSPENSION CABLE INSTALLATION

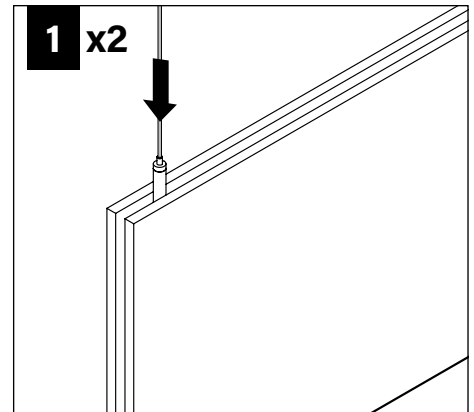
**I**

FOLLOW FOCAL POINT  
INSTRUCTIONS FOR  
**UNIVERSAL SUSPENSION**  
SYSTEM ASSEMBLY  
**SEE IS0166**

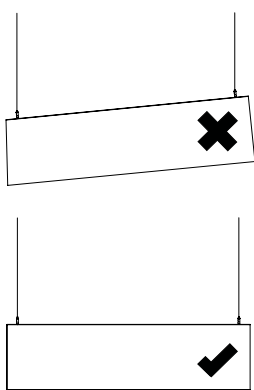
DO NOT HANDLE BY LIP OF  
ACOUSTIC MATERIAL



**1** x2

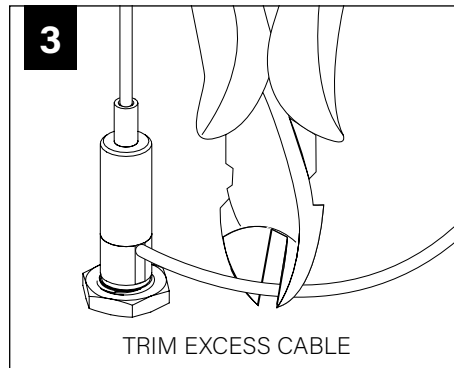


**2**



**OPTIONAL**

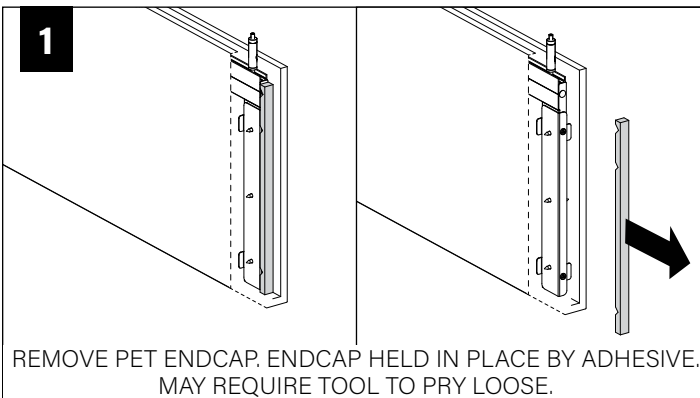
**3**



TRIM EXCESS CABLE

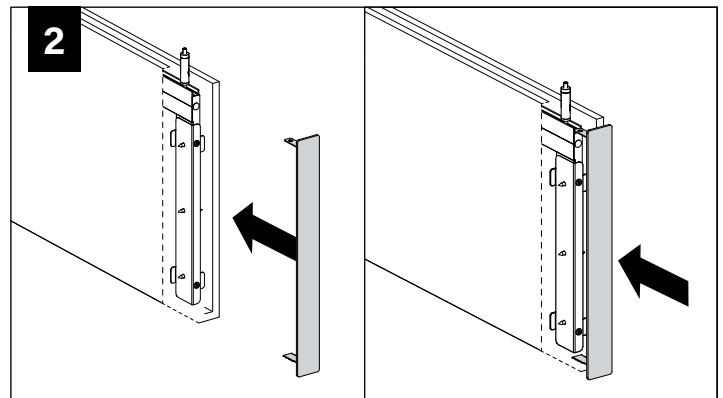
## ENDCAP INSTALLATION

**1**

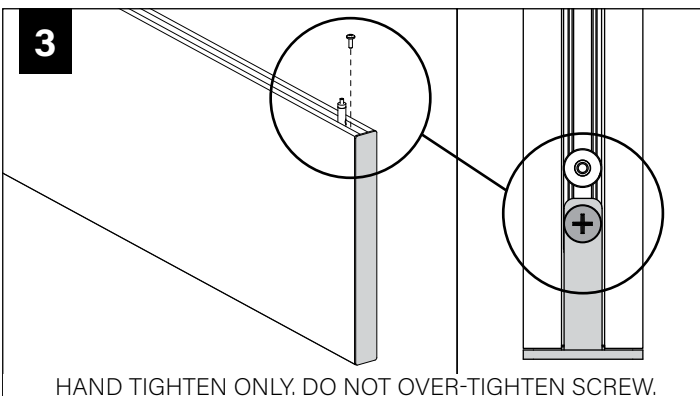


REMOVE PET ENDCAP. ENDCAP HELD IN PLACE BY ADHESIVE.  
MAY REQUIRE TOOL TO PRY LOOSE.

**2**

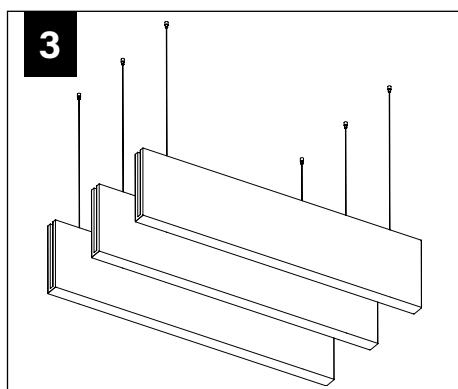
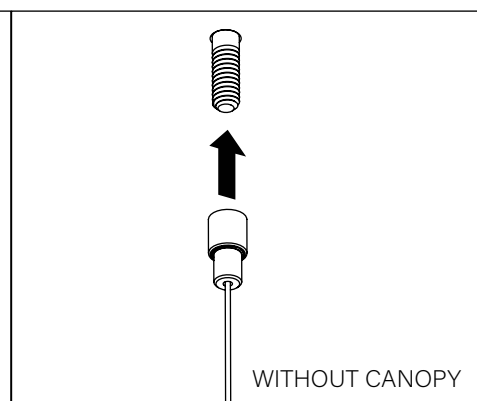
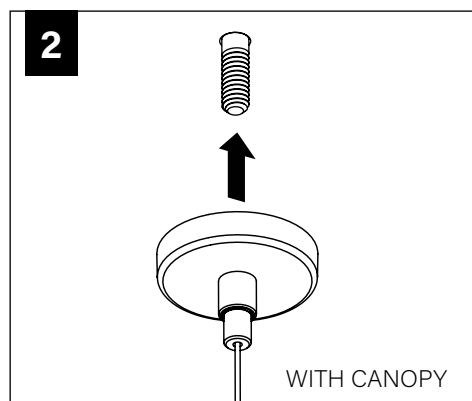
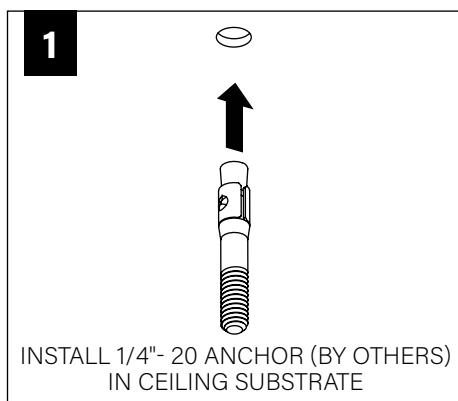


**3**

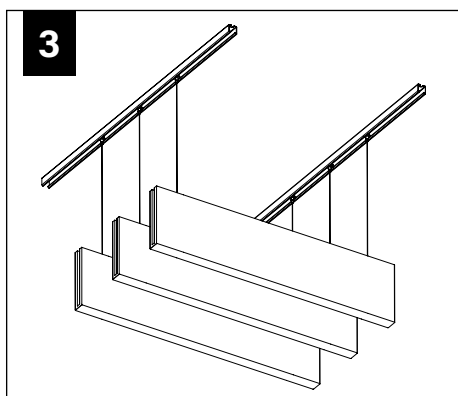
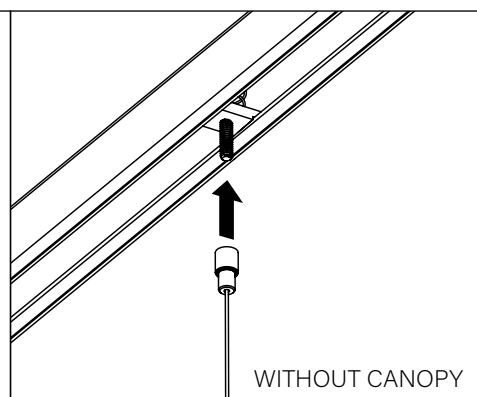
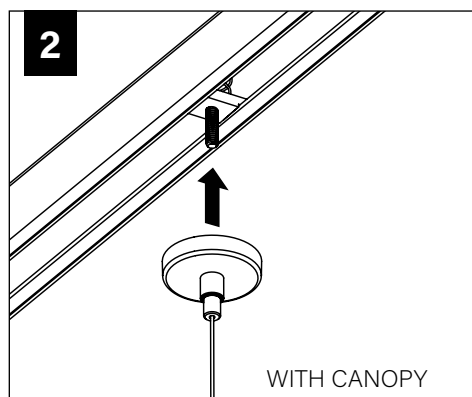
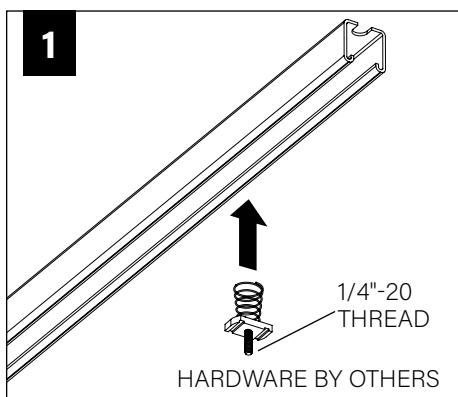


HAND TIGHTEN ONLY. DO NOT OVER-TIGHTEN SCREW.

## DRYWALL/HARD SURFACE CEILING INSTALLATION (SUSPENDED)



## CEILING STRUT INSTALLATION (SUSPENDED)



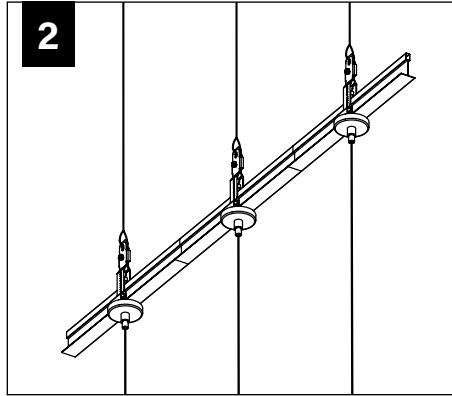
## GRID CEILING INSTALLATION (SUSPENDED)

1

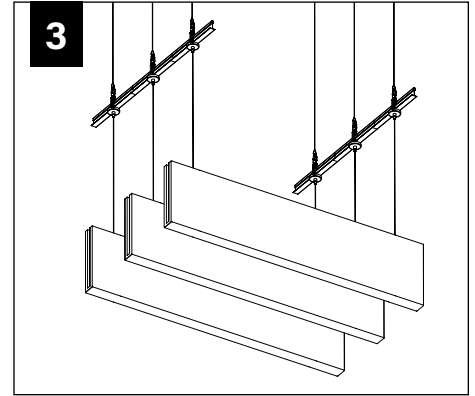


FOLLOW FOCAL POINT  
INSTRUCTIONS FOR  
**UNIVERSAL SUSPENSION**  
SYSTEM ASSEMBLY  
SEE IS0166

2

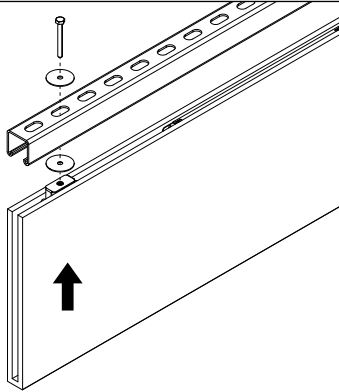


3



## DIRECT TO STRUT INSTALLATION

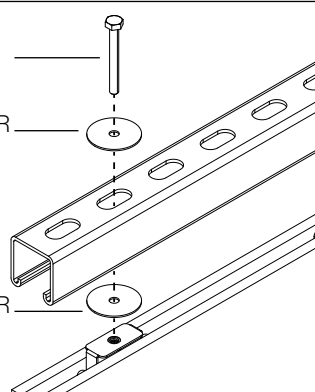
1a



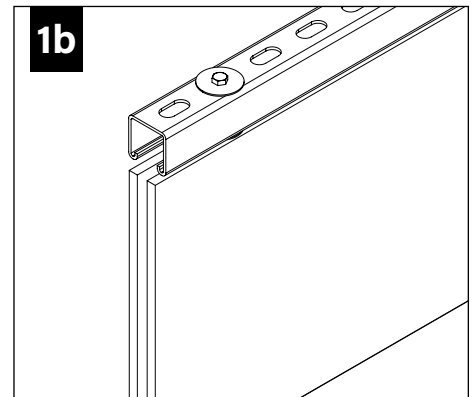
1/4"-20 BOLT

FLAT WASHER

FLAT WASHER



1b



**HARDWARE PROVIDED FOR  
1-5/8" STRUT HEIGHT.**

CONTACT FOCAL POINT IF  
DIFFERENT HARDWARE IS  
REQUIRED FOR INSTALLATION.

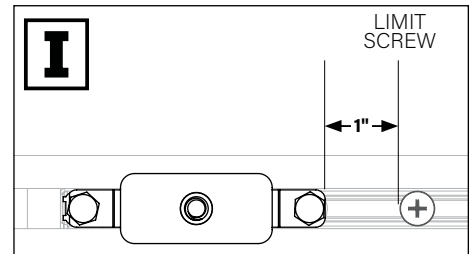
**Strut Height Bolt: 1/4-20 x**

13/16"	1.5"
7/8"	1.5"
1"	1.75"
1-3/8"	2"
<b>1-5/8"</b>	<b>2.25"</b>
2-7/16"	3"
3-1/4"	4"



LIMIT  
SCREW

←1"→



**SLIDE BRACKET UP TO 1"**  
TO ALIGN BRACKET & STRUT

## DIRECT TO GRID INSTALLATION

