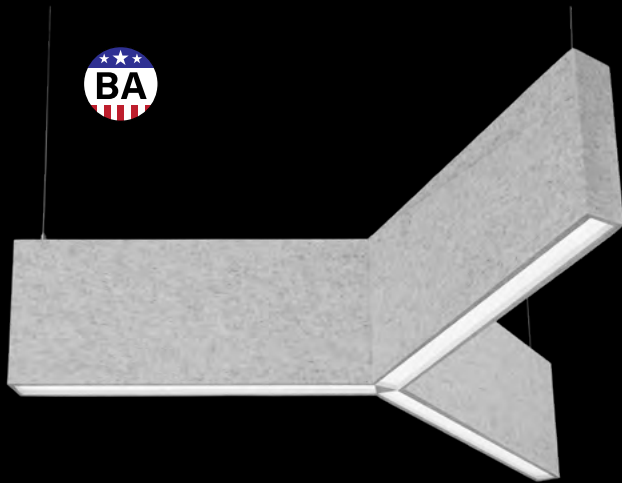
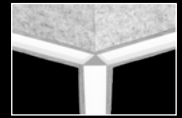


Seem® 1 Acoustic Trio

LED DIRECT



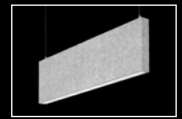
The Naturals collection - Gray Elm shown
Cosmic Collection - Solar Flare shown



Center detail

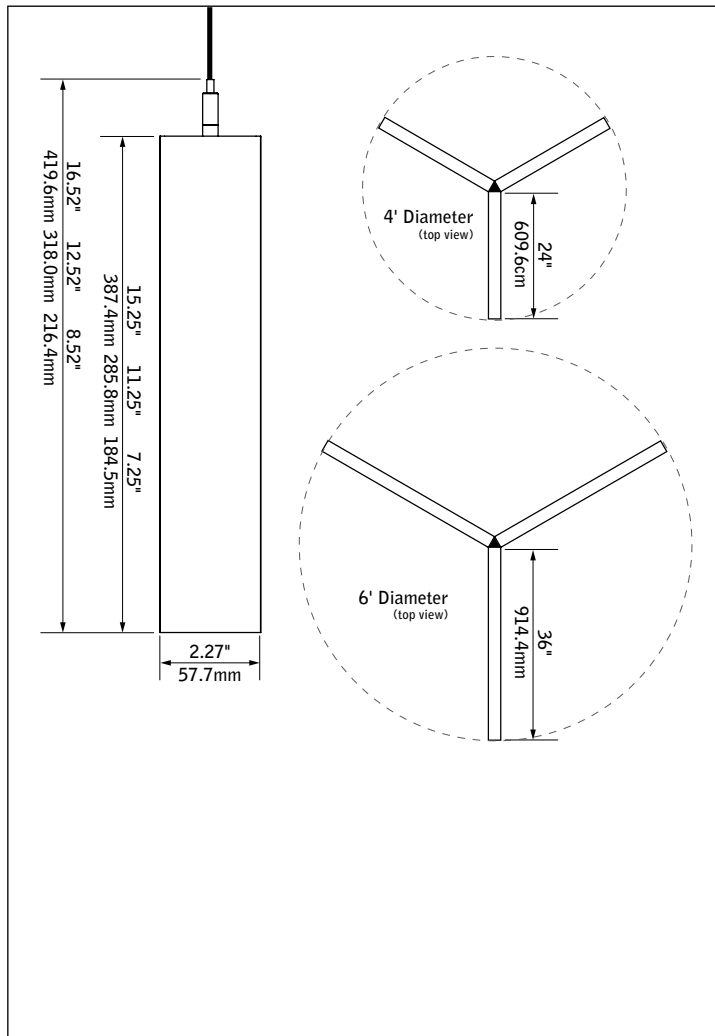


Unlit companion



Seem 1 Acoustic companion

DIMENSIONAL DATA



FEATURES

Narrow, sound absorbing 1.5" aperture 'Y' shaped acoustic pendant with direct distribution.

Available in 4' and 6' diameters with 8", 12", and 16" nominal housing heights.

LED position and lens material optimized to provide the perfect blend of high performance and visual comfort.

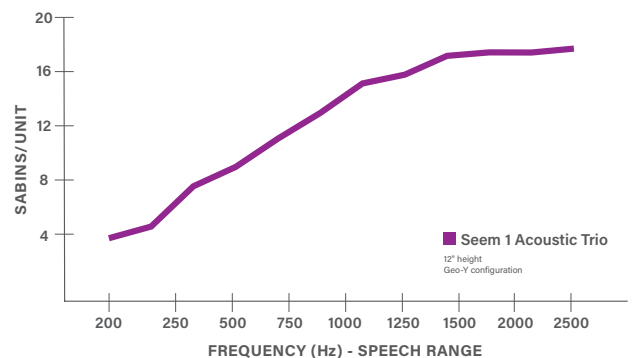
Engineered to maximize sound absorption and to create a statement as a stand-alone pendant, in a cluster or as part of a system when paired with Seem 1 Acoustic.

AirCore™, patent pending, eco-friendly technology that maximizes sound absorption and reduces ecological impact.

Wide range of color options provides design flexibility and personalization for any project.

Available in a range of curated printed finish options, including The Naturals and Cosmic.

ACOUSTIC PERFORMANCE

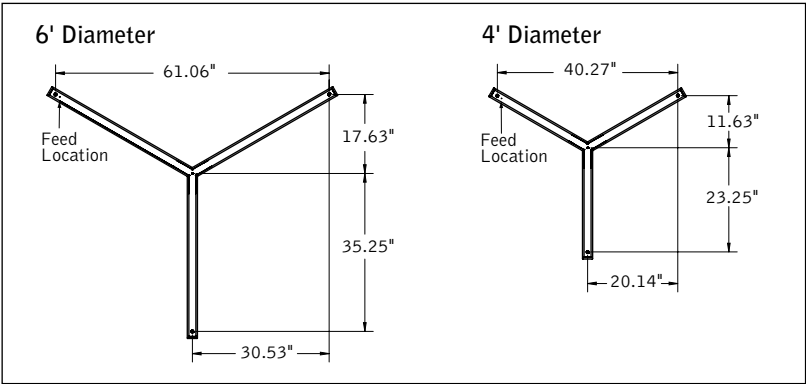


All products were tested in multiple configured arrays. Total absorption will vary based on configuration. Please refer to ASTM C423 reports for more information.

fixture:

project:

MOUNTING DETAILS



SPECIFICATIONS

Acoustic Material

| | |
|---------------------------------|--|
| Content | Housing material is 100% polyester containing up to 50% of recycled plastic bottles (PET felt) and is moisture resistant. See page 3 for color offering. Acoustic material colors are subject to change without notice. For the most current color options, please visit focalpointlights.com/acousticsolutions. Printed finishes such as The Naturals and Cosmic may leave the base material color visible on edges, depending on the product. Consult factory for more information. Lead times may vary depending on color. |
| Cleaning and Care | Remove dust and debris with a clean, soft, lint-free cloth or vacuum |
| PET Thickness | 9mm |
| Surface Burning Characteristics | ASTM E84 Class A / CAN ULC S102 Flame Spread: 0 Smoke Development Index: 300 |
| Colorfastness | AATCC 16A Option 3 Class 4 minimum at 40 hours |

Acoustic Performance

Acoustic testing is performed on all Focal Point acoustic products and varies based on installation and configuration. ASTM C423 test reports can be downloaded from focalpointlights.com. Contact acoustic.solutions@focalpointlights.com for technical questions.

| | |
|--------|--|
| Sabins | Sabins is a unit of sound absorption. It measures how well one square foot of material absorbs sound. Focal Point has averaged the Sabins per unit at four specific frequency bands representing the human speech range (250, 500, 1000, 2000 Hz) to determine the Sabins per product. Sabins/unit varies based on configuration: Geo Y Configuration = 12.24 Sabins Staggered Hex Configuration = 12.07 Sabins |
|--------|--|

LED System

Proprietary linear LED module incorporates premium LEDs on a robust platform to achieve excellent thermal management. LEDs are placed to promote a uniform appearance. Available in 3000K, 3500K or 4000K with both 80 and 90 CRI options. LED drivers are replaceable from above. Color accuracy <3 SDCM.

Weight

12" height, 4' diameter = 17.5lbs. 12" height, 6' diameter = 26.3lbs.

Optic

Reflectors fabricated of 22 Ga. steel finished in Matte White powder coat. Extruded acrylic lens .05" thick with frosted finish, up to 8' continuous. 0.02" thick clear acrylic dust cover.

Electrical

Luminaires are pre-wired with factory installed branch circuit wiring and over-molded quick connects. Standard 120-277V constant current driver includes 0-10V analog dimming. Power factor > .9. Power cord white as standard.

Canopy

Polyester powder coat applied over a multi-stage pre-treatment. Canopy white as standard.

Labels

UL and cUL listed. Suitable for Dry Locations, indoor use only.

Lumen Maintenance

Reported: L70 at >61,000 hours Calculated: L70 at 470,000 hours
 L90 at >61,000 hours L90 at 115,000 hours

Derived from EPA TM-21 calculator. Based on typical conditions, consult factory for additional data.

Reliability

At Focal Point, our products are designed to stand the test of time. Each luminaire is engineered using superior components, manufactured with the utmost care and rigorously tested. Contact us for reliability data.

Warranty

LED system rated for operation in ambient environments up to 25°C. 5-year limited warranty.

4' PERFORMANCE CHART

See page 4

Focal Point LLC reserves the right to change specifications for product improvement without notification.

ORDERING

| Luminaire Series | ASM1TP |
|---|-------------|
| Seem 1 Acoustic Trio Direct | ASM1TP |
| Nominal Size | |
| 4' Diameter | 4 |
| 6' Diameter | 6 |
| Shielding | RL |
| Regress lens | RL |
| Luminaire Height <small>(heights are nominal)</small> | |
| 8" nominal | 8 |
| 12" nominal | 12 |
| 16" nominal | 16 |
| Direct Lumen Output | |
| 4' Diameter | |
| 600 Lumens | 600L |
| 1200 Lumens | 1200L |
| 1800 Lumens | 1800L |
| 2400 Lumens | 2400L |
| 3000 Lumens | 3000L |
| 6' Diameter | |
| 900 Lumens | 900L |
| 1800 Lumens | 1800L |
| 2700 Lumens | 2700L |
| 3600 Lumens | 3600L |
| 4500 Lumens | 4500L |
| Color Temperature | |
| 3000K, 80CRI or 90CRI | 30K or 930K |
| 3500K, 80CRI or 90CRI | 35K or 935K |
| 4000K, 80CRI or 90CRI | 40K or 940K |
| Circuit | 1C |
| Single Circuit | 1C |
| Voltage | UNV |
| 120/277 UNV Volt | UNV |
| Control System & Dimming Level | |
| 0-10V - 10% Dimming | LD1 |
| 0-10V - 1% Dimming | L11 |
| Lutron Hi-Lume EcoSystem (LDE1) - 1% Dimming | LH1 |
| DALI 1% Dimming | D11 |
| Mounting <small>(Mounting hang kits ship with order. Power cable is 18" longer than suspension length.)</small> | |
| 24" Cable Suspension | J24__ |
| 48" Cable Suspension | J48__ |
| 96" Cable Suspension | J96__ |
| 120" Cable Suspension | J120__ |
| <small>(Specify canopy color White (WH), Black (BK) or Titanium Silver (TS). Example: J24WH.) (Consult factory for sloped ceiling applications)</small> | |
| Factory Options | |
| Black Cord | BKCD |
| Acoustic Panel Color | |
| See page 3 for color offering <small>(Consult factory for multi-colored units)</small> | |

Acoustic Materials



COSMIC (25% SCALE)



BLUE STAR

BSR



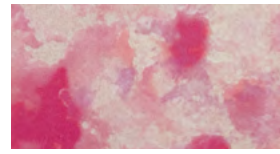
GREEN QUASAR

GQR



MOON ROCK

MRK



PINK NEBULA

PPN



SOLAR FLARE

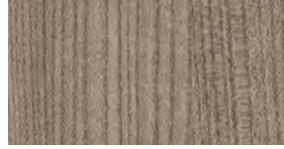
SRF

THE NATURALS (25% SCALE)



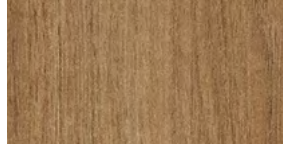
LIGHT OAK

LOK



GRAY ELM

GRE



CHESTNUT

CHT



WALNUT

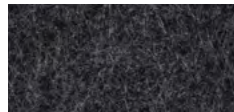
WLT

STANDARD PET



PURE BLACK

PBK



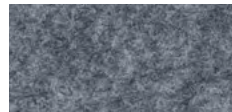
CHARCOAL GRAY

CHG



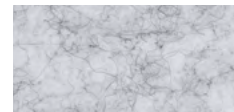
SLATE

SLT



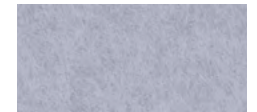
SHADOW GRAY

SDG



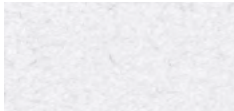
SILVER GRAY

SLG



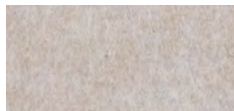
PEARL ICE

PIC



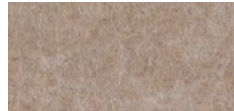
CLASSIC WHITE

CWH



NATURAL LINEN

NTL



HAZELWOOD

HWZ

PREMIUM PET



CORNFLOWER BLUE

CFB



DENIM BLUE

DNB



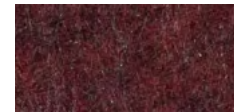
MIDNIGHT BLUE

MNB



DEEP PURPLE

DPP



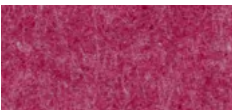
BRICK RED

BRD



CHERRY RED

CHR



BERRY

BRY



BLUSH

BLS



CARROT

CRT



PINEAPPLE

PNA



DEEP WATER

DWT



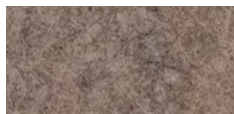
SEAFOAM

SFM



EMERALD GREEN

EMG



LIMESTONE

LMS

Declare.

PET
Focal Point, LLC

Final Assembly: Chicago, Illinois, USA
Life Expectancy: 30 Year(s)
End of Life Options: Salvageable/Reusable in its Entirety, Recyclable (100%)

Ingredients:

Polyethylene terephthalate; PET; N, N'-Ethylene bisstearamide; Octadecanamide; N,N'-1,2-ethanedithiolbis-
Stearic Acid; Antioxidant 1076;
Benzeneisopropanoic acid, 3,5-bis(1,1-dimethylethyl)-4-hydroxy-
octadecyl ester; Antioxidant KY-405; Benzenamine, 4-(1-
methyl-1-phenylethyl)-N-[4-(1-methyl-1-phenylethyl)phenyl];
Titanium Dioxide: Titanium dioxide

Living Building Challenge Criteria:

I-13 Red List:

■ LBC Red List Free % Disclosed: 100% at 100ppm
□ LBC Red List Approved VOC Content: Not Applicable
■ Declared

I-10 Interior Performance: Not Compliant
I-14 Responsible Sourcing: Not Applicable

FPL-0001
EXP. 01 JUN 2026
Original Issue Date: 2020

INTERNATIONAL LIVING FUTURE INSTITUTE™ living-future.org/declare

Declare.

Seem Acoustic Baffles
Focal Point, LLC

Final Assembly: Chicago, Illinois, USA
Life Expectancy: 10 Year(s)
End of Life Options: Recyclable (55%), Landfill (45%)

Ingredients:

Polyethylene terephthalate; UNS G10080 Steel Alloy; Copper;
Polymethyl methacrylate; Small Electrical Components - RoHS
Compliant; Poly[imino(1,6-dioxo-1,6-hexanedyl)imino-1,6-
hexanedyl]; Polyvinyl chloride; Steel; carbon; Zinc; Aluminum;
Steel manufacture, chemicals; Methyl methacrylate;
Polyethylene

†LBC Temp Exception RL-002 - Small Electrical Components

Living Building Challenge Criteria:

I-13 Red List:

□ LBC Red List Free % Disclosed: 100% at 100ppm
□ LBC Red List Approved VOC Content: Not Applicable
■ Declared

I-10 Interior Performance: Not Compliant
I-14 Responsible Sourcing: Not Applicable

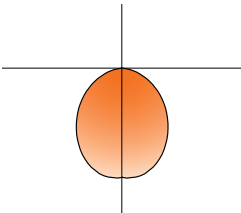
FPL-0005
EXP. 01 FEB 2027
Original Issue Date: 2024

INTERNATIONAL LIVING FUTURE INSTITUTE™ living-future.org/declare

Slight color variations are inherent to the PET felt manufacturing process. Color renditions on screens vary due to display settings and lighting conditions.

Order samples at focalpointlights.com/Samples

4' DIAMETER PERFORMANCE CHART

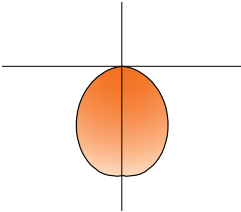


Photometric performance is measured in accordance with IESNA LM-79. Visit focalpointlights.com for complete photometric data.

| Delivered Lumens | Tested System Watts | LPW |
|------------------|---------------------|-----|
| 600 | 7.2 | 85 |
| 1200 | 12.5 | 98 |
| 1800 | 17.9 | 101 |
| 2400 | 24.2 | 102 |
| 3000 | 30.2 | 100 |

*Based on 3500k, 80CRI, 4' lengths. Lumen multipliers: 90 CRI = 0.87. Lumen output may vary +/- 5%. Actual wattage may vary +/- 5%.

6' DIAMETER PERFORMANCE CHART



Photometric performance is measured in accordance with IESNA LM-79. Visit focalpointlights.com for complete photometric data.

| Delivered Lumens | Tested System Watts | LPW |
|------------------|---------------------|-----|
| 900 | 9.0 | 103 |
| 1800 | 15.9 | 114 |
| 2700 | 23.4 | 116 |
| 3600 | 31.7 | 114 |
| 4500 | 40.0 | 113 |

*Based on 3500k, 80CRI, 4' lengths. Lumen multipliers: 90 CRI = 0.87. Lumen output may vary +/- 5%. Actual wattage may vary +/- 5%.