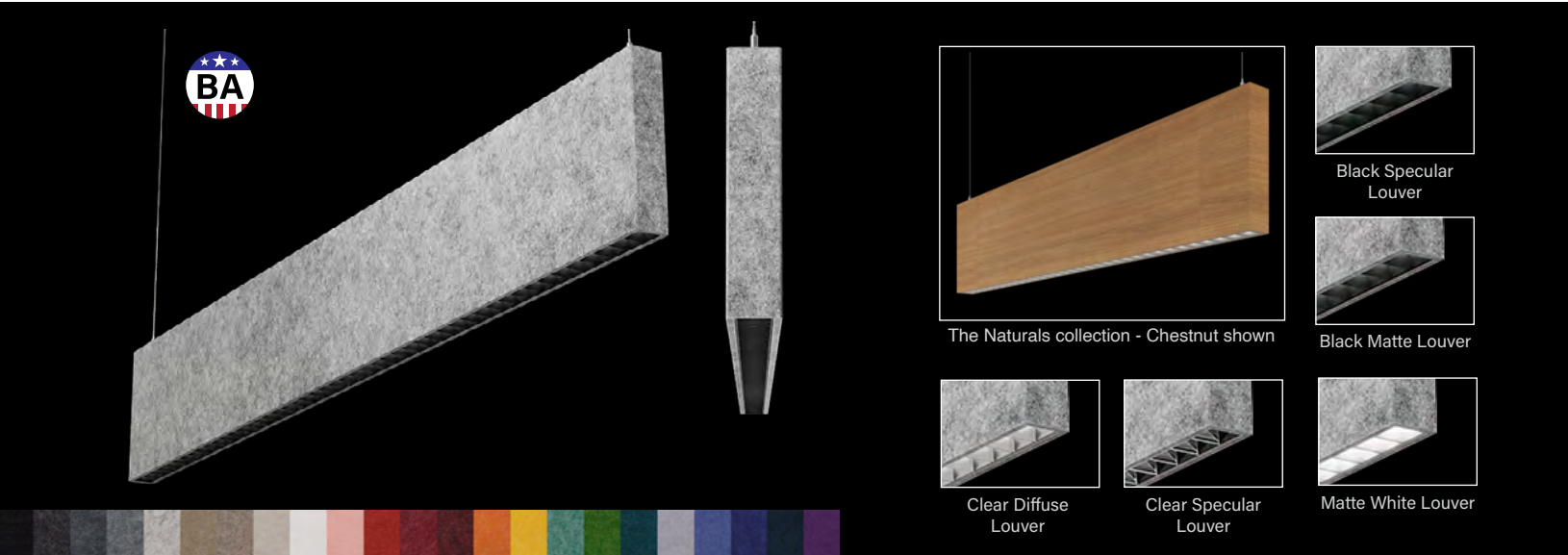
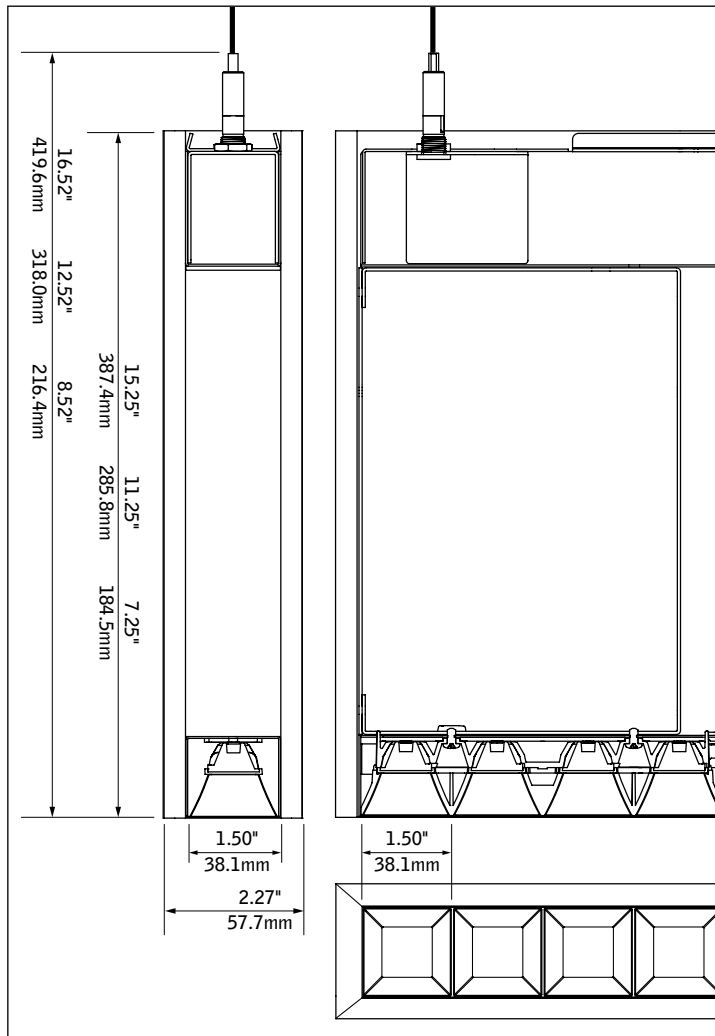


# Seem® 1 Acoustic Louver

LED DIRECT/INDIRECT



## DIMENSIONAL DATA



## FEATURES

Narrow, sound absorbing 1.5" aperture linear direct/indirect acoustic LED luminaire with louver and high-performance optics.

Available in 4' to 208' lengths in 6" increments with 8", 12" or 16" nominal housing heights in straight lengths.

Deeply regressed louver cells provide 60° cut-off from light source to promote visual comfort.

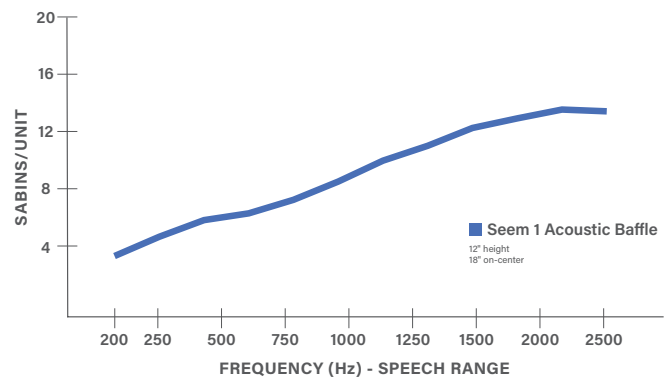
Diversity of louver finishes to tailor how the light is perceived and experienced, from nearly invisible light sources with a striking transition to warmly illuminated louver cells with a smooth transition.

AirCore® Technology: patented, eco-friendly technology that maximizes sound absorption and reduces ecological impact.

Pair with Seem 1 Acoustic unlit baffle, Seem 1 Acoustic Trio, AirCore Blade®, or TruBlade® to create a coordinated look in interior spaces.

Available with The Naturals, a series of finishes that exude biophilic beauty

## ACOUSTIC PERFORMANCE



All products were tested in multiple configured arrays. Total absorption will vary based on configuration. Please refer to ASTM C423 reports for more information.

fixture:

project:

SPECIFICATIONS

Acoustic Material

Content	Housing material is 100% polyester containing up to 50% of recycled plastic bottles (PET felt) and is moisture resistant. See page 3 for color offering. Acoustic material colors are subject to change without notice. For the most current color options, please visit focalpointlights.com/acousticsolutions. Lead times may vary depending on color.
Cleaning and Care	Remove dust and debris with a clean, soft, lint-free cloth or vacuum
PET Thickness	9mm
Surface Burning Characteristics	ASTM E84 Class A / CAN ULC S102 Flame Spread: 0, Smoke Development Index: 300

Acoustic Performance

Acoustic testing is performed on all Focal Point acoustic products and varies based on installation and configuration. ASTM C423 test reports can be downloaded from focalpointlights.com. Contact acoustic.solutions@focalpointlights.com for technical questions.

Sabins	Sabins is a unit of sound absorption. It measures how well one square foot of material absorbs sound. Focal Point has averaged the Sabins per unit at four specific frequency bands representing the human speech range (250, 500, 1000, 2000 Hz) to determine the Sabins per product.  8' length, 12" height: 12" OC = 5.08 Sabins, 18" OC = 9.05 Sabins, 24" OC = 9.46 Sabins
--------	---

LED System

Proprietary linear LED module incorporates premium LEDs on a robust platform to achieve excellent thermal management. LEDs are placed to promote a uniform appearance. Available in 2700K, 3000K, 3500K or 4000K with both 80 and 90 CRI options. LED drivers are replaceable from above. Color accuracy <3 SDCM.

Weight - 12" height, 4' length = 13.38lbs. 12" height, 6' length = 19.51lbs. 12" height, 8' length = 25.64lbs.

Optic

60-degree cut-off to louvered light source and its image.

Mounting

Minimum mounting height 7.5" from the ceiling.

Electrical

Luminaires are pre-wired with factory installed branch circuit wiring and over-molded quick connects. Standard 120-277V constant current driver includes 0-10V analog dimming. Power factor > .9. Power cord white as standard.

Canopy

Polyester powder coat applied over a multi-stage pre-treatment. Canopy white as standard.

Emergency Battery

Emergency output - 10 watts for 90 minutes. Maximum mounting height: 16.83ft.

Labels

UL and cUL listed. Suitable for Dry Locations, indoor use only.

Lumen Maintenance

Linear Source

Reported:	L70 at >61,000 hours	Calculated:	L70 at 470,000 hours
	L90 at >61,000 hours		L90 at 115,000 hours

Louvered Sources

Reported:	L70 at >54,000 hours	Calculated:	L70 at 138,000 hours
	L90 at 43,000 hours		L90 at 43,000 hours

Derived from EPA TM-21 calculator. Based on typical conditions, consult factory for additional data.

Reliability

At Focal Point, our products are designed to stand the test of time. Each luminaire is engineered using superior components, manufactured with the utmost care and rigorously tested. Contact us for reliability data.

Warranty

LED system rated for operation in ambient environments up to 25°C and when mounted no less than 7.5" from the ceiling. 5-year limited warranty.

DISTRIBUTIONS

	NFL	FL1	FL2	WFL	LMC
Beam Spread	20°	29°	43°	67°	68°
Spacing Criteria	0.36	0.50	0.70	0.98	1.18

4' PERFORMANCE CHART

See page 4

ORDERING		ASM1CBS
Luminaire Series		
Seem 1 Acoustic Louver Direct/Indirect	ASM1CBS	
Shielding		
Batwing Optic Top/Louver Bottom	BWLC	
Dust Cover Top/Louver Bottom	DCLC	
Louver Configuration		LF
Fully Louvered		
Luminaire Height		
(heights are nominal)		
8"		8
12"		12
16"		16
Indirect Distribution		
250 Lumens per foot	250UP	
375 Lumens per foot	375UP	
500 Lumens per foot	500UP	
625 Lumens per foot	625UP	
800 Lumens per foot	800UP	
(Not available with D11)		
Direct Louvered Distribution		
250 Lumens per foot	250DL	
(Consult factory for available options)		
375 Lumens per foot	375DL	
500 Lumens per foot	500DL	
625 Lumens per foot	625DL	
750 Lumens per foot	750DL	
875 Lumens per foot	875DL	
1000 Lumens per foot	1000DL	
Color Temperature		
2700K, 80CRI or 90CRI	27K or 927K	
3000K, 80CRI or 90CRI	30K or 930K	
3500K, 80CRI or 90CRI	35K or 935K	
4000K, 80CRI or 90CRI	40K or 940K	
Circuit		
Single Circuit	1C	
Dual Circuit	2C	
(Circuit 1 = Indirect, Circuit 2 = All Direct sources.)		
Voltage		UNV
120/277 UNV Volt	UNV	
Control System & Dimming Level		
0-10V - 10% Dimming	LD1	
0-10V - 1% Dimming	L11	
Lutron Hi-Lume EcoSystem (LDE1) -	LH1	
1% Dimming		
DALI 1% Dimming	D11	
Mounting		
(Mounting hang kits ship with order. Power cable is 18" longer than suspension length. Consult factory for longer power cable lengths.)		
24" Cable Suspension	J24__	
48" Cable Suspension	J48__	
96" Cable Suspension	J96__	
120" Cable Suspension	J120__	
(Specify canopy color White (WH), Black (BK) or Titanium Silver (TS). Example: J24WH.)		
(Consult factory for sloped ceiling applications)		
Distribution		
Narrow Flood	NFL	
Flood 1	FL1	
Flood 2	FL2	
Wide Flood	WFL	
Louvered Mixing Chamber	LMC	
Factory Options		
Black Cord	BKCD	
Emergency Circuit	_EC	
Emergency Battery Pack†	_EM	
†(6' minimum length. Consult factory for available options.)		
Louver Finish		
Matte Black	BK	
Black Specular	BS	
Clear Diffuse	CD	
Clear Specular	CS	
Matte White	WH	
Acoustic Panel Color		
See page 3 for color offering		
Luminaire Length		ft _in
(Luminaires are 3/4" longer than specified and cannot be cut to length or joined in the field.)		
Specify length in 6" increments from 4' to 208'		_ft _in

# Acoustic Materials



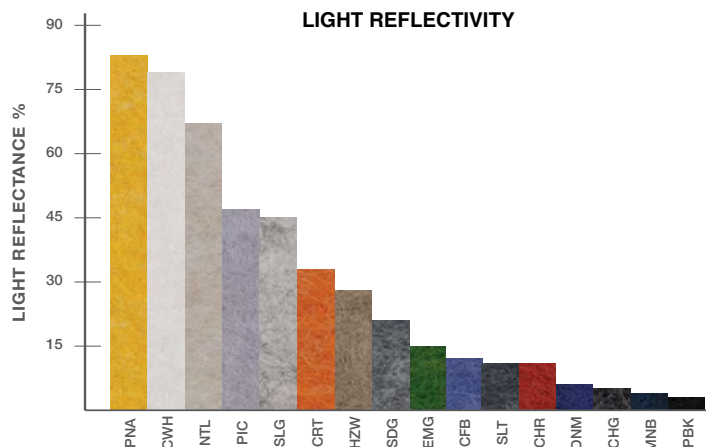
## THE NATURALS (25% SCALE)



## STANDARD PET



## PREMIUM PET

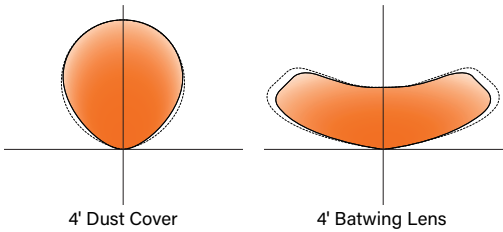


4' PERFORMANCE CHART INDIRECT DISTRIBUTION

Indirect Lumen Output	Delivered Lumens	Tested System Watts	Lumens per Watt (LPW)	
			BW	DC
250LF	1000	8	118	123
375LF	1500	12	130	130
500LF	2000	15	134	134
625LF	2500	18	136	136
800LF	3200	24	133	133

Based on 3500k, 80CRI, 4' lengths. 90 CRI Lumen multiplier = 0.87. Lumen output may vary +/- 5%. Actual wattage may vary +/- 5%

PERFORMANCE CURVES

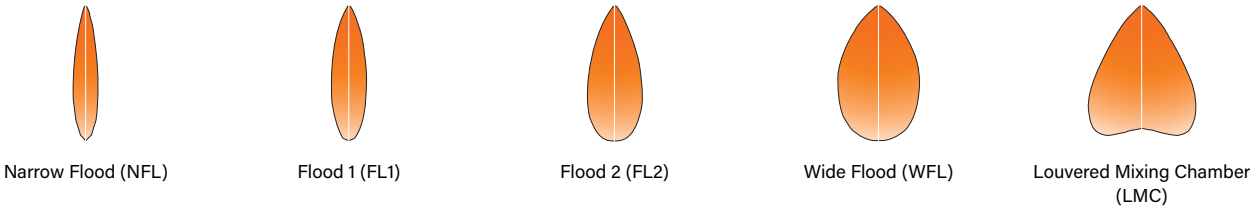


4' PERFORMANCE CHART LOUVER DISTRIBUTION

Distribution	Lumens per Foot	Tested System Watts	LPW
WFL	250	11.0	92
	375	14.7	101
	500	19.3	106
	625	24.3	105
	750	28.3	107
	875	32.6	107
	1000	37.0	108

Based on 4' luminaire, 3500K, 80 CRI, Matte Black baffle. Lumen output may vary +/- 5%. Actual wattage may vary +/- 5%

PERFORMANCE CURVES



SEEM 1 ACOUSTIC LOUVER LUMEN MULTIPLIER TABLE

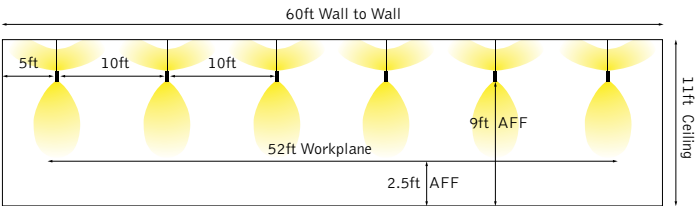
Louver Color Temperature & CRI		Louver Distribution		Louver Finish	
Color Temperature	Multiplier	Distribution	Multiplier	Color	Multiplier
2700K, 80+ CRI [27K]	0.95	Narrow Flood [NFL]	1.34	Matte Black [BK]	1.00
2700K, 90+ CRI [927K]	0.80	Flood 1 [FL1]	1.14	Black Specular [BS]	1.00
3000K, 80+ CRI [30K]	0.97	Flood 2 [FL2]	1.21	Clear Diffuse [CD]	1.07
3000K, 90+ CRI [930K]	0.83	Wide Flood [WFL]	1.00	Clear Specular [CS]	1.10
3500K, 80+ CRI [35K]	1.00	Louvered Mixing Chamber [LMC]	0.97	Matte White [WH]	1.11
3500K, 90+ CRI [935K]	0.85				
4000K, 80+ CRI [40K]	1.03				
4000K, 90+ CRI [940K]	0.87				

**How To Use Lumen Multipliers**

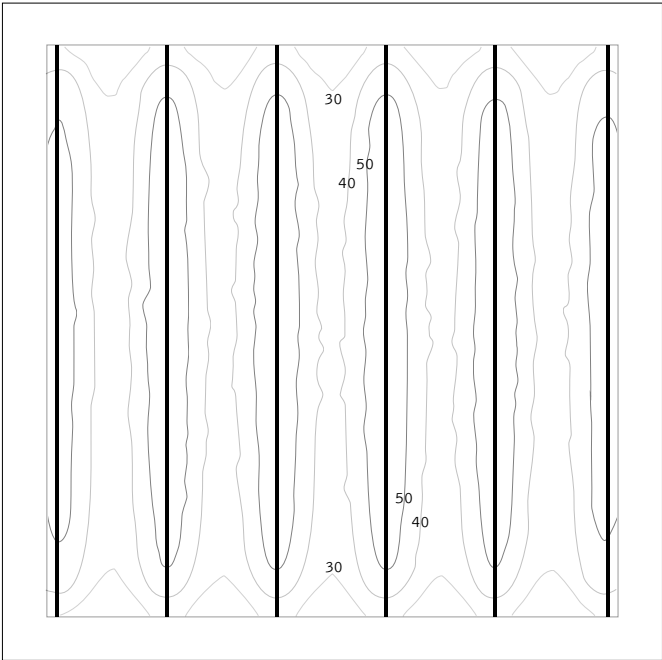
**Formula:** (Lumen Output Value) x (Color Temperature & CRI) x (Distribution) x (Finish)

**Louwer Example:** FSM1CBS-1000DL-930K-NFL-BS  
(1000) x (0.83) x (1.34) x (1.00) ≈ 1112.2 lm (estimated delivered lumens)

SEEM 1 ACOUSTIC LOUVER APPLICATION EXAMPLE - BATWING INDIRECT / FULLY LOUVERED



Workplane Illuminance



Average Illuminance = 41 fc

Lighting Power Density (LPD) = 0.49

Seem 1 Acoustic Louver with batwing indirect and fully louvered direct illumination is a powerful and efficacious solution for open working environments. Workplanes benefit from 41 footcandles or more and superior uniformity with a lighting power density of less than 0.5 while maintaining luminaire on-center spacing of 10 feet or greater.

Calcluation Details

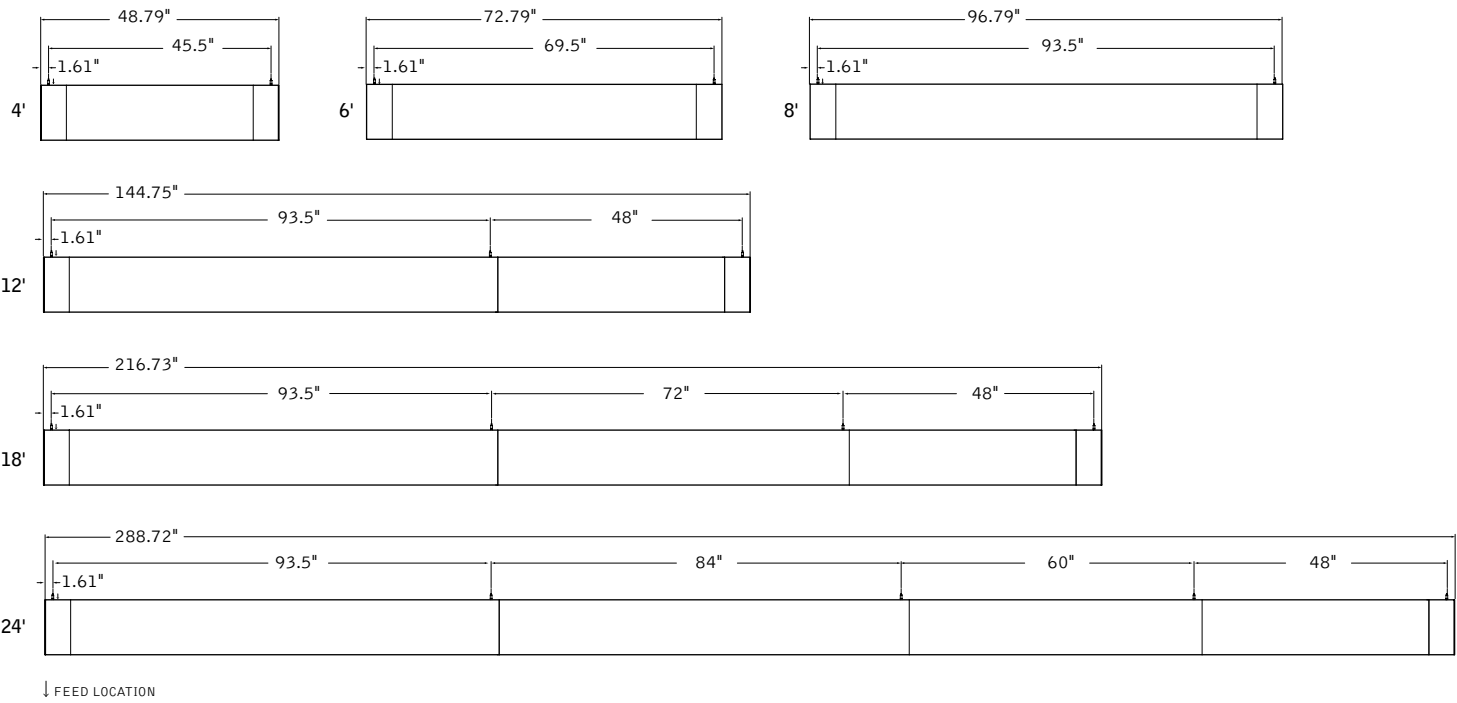
- Room Area: 60ft x 60ft
- Calculation Area: 52ft x 52ft
- Ceiling Height: 11ft
- Luminaire Height: 9ft AFF
- Luminiare Spacing: 10ft OCS
- Workplane Height: 2.5ft AFF
- Reflectances: 80/50/20
- Light Loss Factor: 0.9

Luminaire Details

- Shielding: Batwing Indirect  
Fully Louvered, Wide Flood, Direct
- Lumens per foot: 250 Indirect  
250 Direct
- Louver finish: Matte Black

Installation		Lumens/ft (UP/DN)	Louver Distribution	LPD (Watts/ft²)	Workplane		Ceiling	
Ceiling Height	On-center Spacing				Average Footcandles	Uniformity (avg. to min.)	Average Footcandles	Uniformity (avg. to min.)
11ft	10ft	250/250	WFL	0.49	43.1	1.99	29.1	2.69
			LMC		42.1	2.11	28.9	2.69
12.5ft			WFL		41.9	1.79	29.0	2.64
			LMC		41.0	1.77	28.8	2.65
12.5ft	12ft	375/250	WFL	0.48	41.9	1.88	35.5	3.27
			LMC		41.0	1.96	35.3	3.29

MOUNTING DETAILS



RUN CHART

Run length (ft)	Housing Configuration Section Lengths	# of hang points per run
9	5 + 4	3
10	6 + 4	3
11	7 + 4	3
12	8 + 4	3
13	8 + 5	3
14	8 + 6	3
15	8 + 7	3
16	8 + 8	3
17	8 + 5 + 4	4
18	8 + 6 + 4	4
19	8 + 7 + 4	4
20	8 + 7 + 5	4
21	8 + 7 + 6	4
22	8 + 7 + 7	4
23	8 + 7 + 8	4
24	8 + 7 + 5 + 4	5
25	8 + 7 + 6 + 4	5
26	8 + 7 + 7 + 4	5
27	8 + 7 + 7 + 5	5
28	8 + 7 + 7 + 6	5

Run length (ft)	Housing Configuration Section Lengths	# of hang points per run
29	8 + 7 + 7 + 7	5
30	8 + 7 + 7 + 8	5
31	8 + 7 + 7 + 5 + 4	6
32	8 + 7 + 7 + 6 + 4	6
33	8 + 7 + 7 + 7 + 4	6
34	8 + 7 + 7 + 7 + 5	6
35	8 + 7 + 7 + 7 + 6	6
36	8 + 7 + 7 + 7 + 7	6
37	8 + 7 + 7 + 7 + 8	6
38	8 + 7 + 7 + 7 + 5 + 4	7
39	8 + 7 + 7 + 7 + 6 + 4	7
40	8 + 7 + 7 + 7 + 7 + 4	7
41	8 + 7 + 7 + 7 + 7 + 5	7
42	8 + 7 + 7 + 7 + 7 + 6	7
43	8 + 7 + 7 + 7 + 7 + 7	7
44	8 + 7 + 7 + 7 + 7 + 8	7
45	8 + 7 + 7 + 7 + 7 + 5 + 4	8
46	8 + 7 + 7 + 7 + 7 + 6 + 4	8
47	8 + 7 + 7 + 7 + 7 + 7 + 4	8
48	8 + 7 + 7 + 7 + 7 + 7 + 5	8