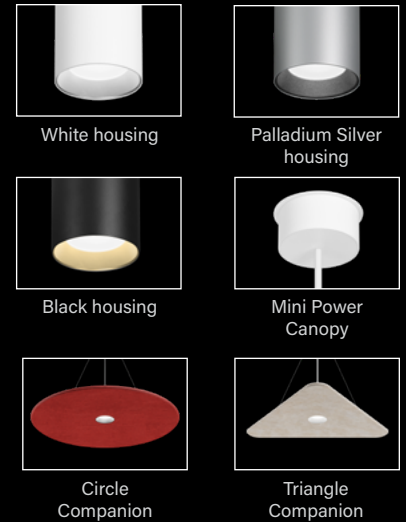
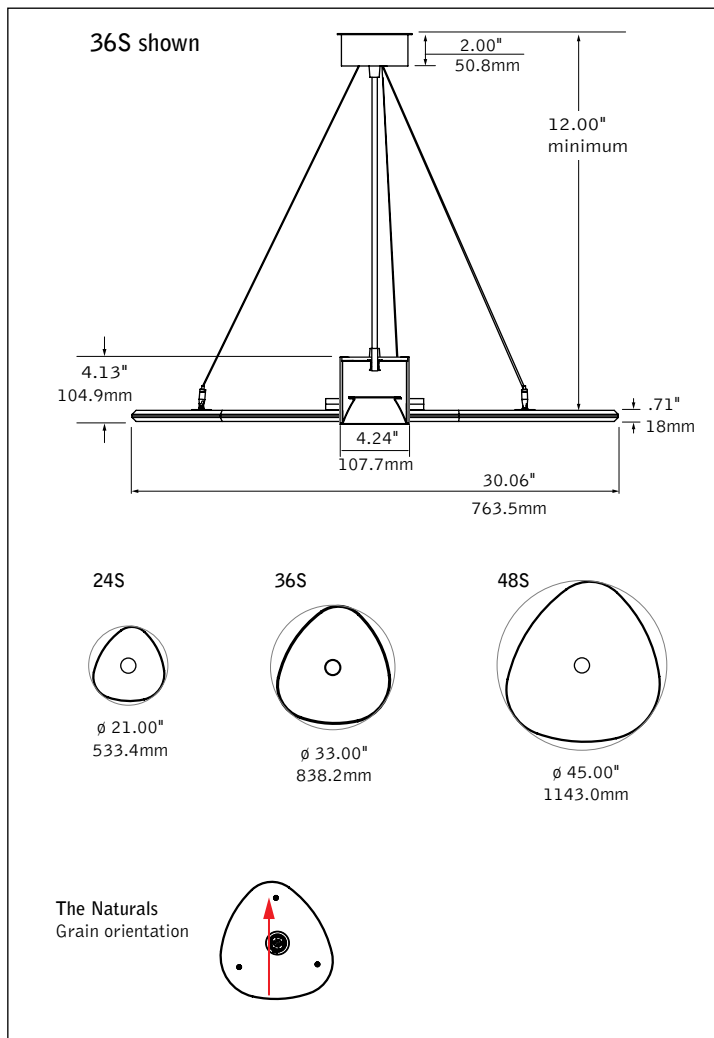


Plyta™ Ovo

ACOUSTIC PENDANT



DIMENSIONAL DATA



FEATURES

Ovoid acoustic pendant with integrated ID+ 3.5" Pure Cylinder light engine.

Nominal 24", 36" or 48" sizes.

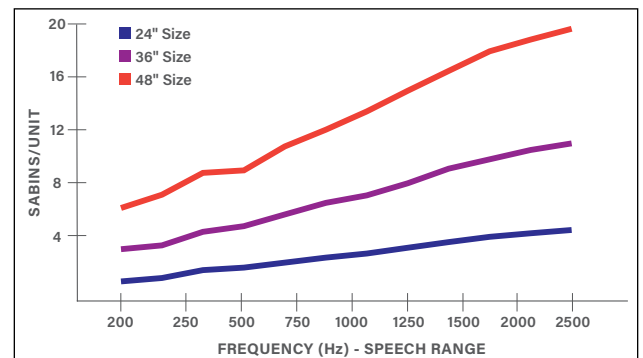
Wide range of PET felt color options and two-tone ability provide design flexibility.

60° and 75° cut-off reflector options available.

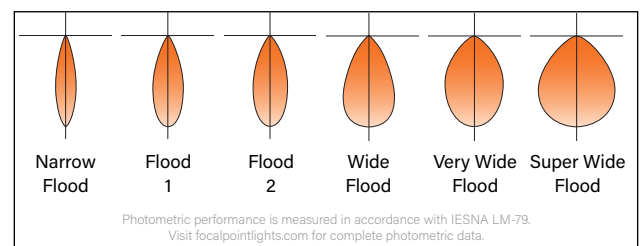
25° to 90° beam spreads support accent lighting, task lighting and general illumination.

Unlit companion available.

ACOUSTIC PERFORMANCE



DISTRIBUTIONS



fixture:

project:

SPECIFICATIONS

Acoustic Material

Content	Housing material is 100% polyester containing up to 50% of recycled plastic bottles (PET felt) with an ASTM E-84 Class A / CAN ULC S102 fire rating and is moisture resistant. See page 3 for color offering. Acoustic material colors are subject to change without notice. For the most current color options, please visit focalpointlights.com/acousticsolutions . Lead times may vary depending on color.
Cleaning and Care	Remove dust and debris with a clean, soft, lint-free cloth or vacuum
PET Thickness	18mm (Two 9mm pieces)
NRC	24" - 0.70, 36" - 0.80, 48" - 0.85


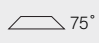
LED System

Proprietary LED module with single light emitting source. May be specified in 2700K, 3000K, 3500K or 4000K in CRI>80, CRI>90, or CRI 97+. 3500K and 4000K with CRI>90 have a cyanosis observation index (COI) of 3.3 or less. Color accuracy within 2 SDCM. Aluminum heat sink provides appropriate thermal management.

Construction

PET Shade. Light engine housing is extruded aluminum. Internal reflector (DNS) is spun aluminum. DSS reflector is die-cast aluminum. 12" minimum suspension. Unlit weights will not exceed: 24" - 4lbs, 36" - 7lbs. 48" - 11lbs. Lit weights will not exceed: 24" - 6lbs, 36" - 9lbs. 48" - 13lbs.

Optics

Optic	Cut-off degree	Distribution Beam Spread Spacing Criteria					
		NFL	FL1	FL2	WFL	VWFL	SWFL
DNS	 60°	25° 0.42	37° 0.63	45° 0.75	56° 0.92	—	—
DSS	 75°	26° 0.44	37° 0.60	45° 0.72	56° 0.84	74° 1.07	91° 1.24

Electrical

Choice of constant current dimming drivers. Power factor > .9 typical. Not Right Light as standard, consult factory.

Emergency

Emergency output —171ft for CD/ WH reflectors, and 151ft for WD/ BK reflectors. J-box cannot be recessed above the ceiling with Emergency Battery.

Labels

UL and cUL listed. Suitable for Dry or Damp Locations, indoor use only.

Finish

Polyester powder coat applied over a multi-stage pre-treatment.

Lumen Maintenance

Calculated: L70 at 200,000 hours Reported: L70 at >55,000 hours
(Derived from EPA TM-21 calculator per 10,000 hours of LED test data)

Reliability

At Focal Point, our products are designed to stand the test of time. Each luminaire is engineered using superior components, manufactured with the utmost care and rigorously tested. Contact us for reliability data.

Warranty

LED system rated for operation in ambient environments up to 25°C. 5-year limited warranty. Acoustic shade 1-year limited warranty.

PERFORMANCE CHART

Lumen Output	Delivered Lumens	Tested System Watts	LPW
700DN	663	8	79
900DN	852	10	90
1100DN	1041	12	88
1300DN	1231	15	81
1500DN	1420	17	82
1700DN	1609	20	82
1900DN	1799	22	82
2100DN	1988	24	82
2300DN	2177	27	82

Based on Short Cone (DNS), 3500K, 80CRI, Wide Flood, Clear Diffuse. Lumen output may vary +/- 5%. Actual wattage may vary +/- 5%.

Focal Point LLC reserves the right to change specifications for product improvement without notification.

ACOUSTIC SHADE ORDERING

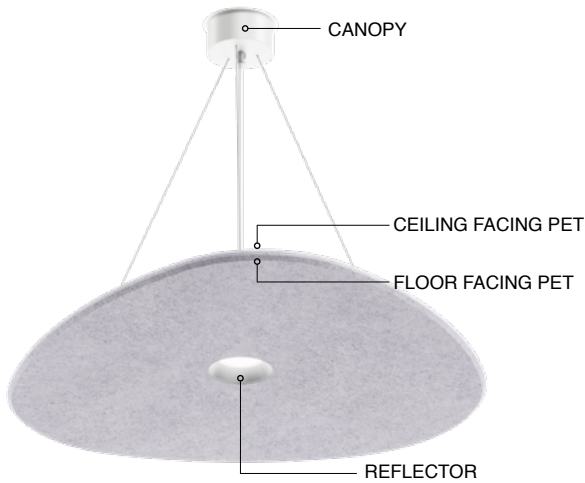
Series	
Plyta lit	APY
Plyta unlit	AUPY
Nominal Size	
24" Shade	24S
36" Shade	36S
48" Shade	48S
Profile	OVO
Ovo	OVO
Acoustic Shade Color	
See page 3 for PET color offering	
Ceiling Facing Color	---
Floor Facing Color	---
Cable Suspension	
24"	C24
48"	C48
96"	C96
120"	C120
Canopy Color (leave blank for lit)	
Matte Black	BK
Matte White	WH
Palladium Silver	PS

LIGHT ENGINE ORDERING

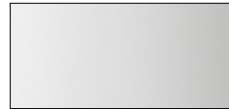
Luminaire Series	FLCY3N	FLCY3N
ID+ 3.5" Pure Cylinder		
Trim Type	RD	RD
Round		
Housing Height		4H
4"	4H	
Direct Lumen Output		
700 Lumens	700DN	
900 Lumens	900DN	
1100 Lumens	1100DN	
1300 Lumens	1300DN	
1500 Lumens	1500DN	
1700 Lumens	1700DN	
1900 Lumens	1900DN	
2100 Lumens	2100DN	
2300 Lumens (DSS not available.)	2300DN	
Color Temperature		
(Add 9 for 90 CRI or H for 97 CRI. Leave blank for 80 CRI.)		
2700K, 80/90/97+ CRI	27K	
3000K, 80/90/97+ CRI	30K	
3500K, 80/90/97+ CRI	35K	
4000K, 80/90/97+ CRI	40K	
Circuits		1C
Single Circuit	1C	
Voltage		
UNV 120/277 Volt	UNV	
120 Volt	120	
277 Volt	277	
Canopy Configuration		MPCA
Mini Power Canopy	MPCA	
Canopy Color		
Matte Black	BK	
Matte White	WH	
Palladium Silver	PS	

Control System & Dimming Level	
0-10V - 1% Dimming	L11
Phase Dimming (120V only)	LFP
Mounting	
72" Cable, Straight Feed (Cut in field)	C72
144" Cable, Straight Feed (Cut in field)	C144
Suspension Color	
Black	BK
White	WH
Direct Optic	
60° cut-off cone	DNS
75° cut-off cone with Solite Lens	DSS
Direct Distribution	
Narrow Flood	NFL
Flood 1	FL1
Flood 2	FL2
Wide Flood	WFL
Very Wide Flood (DSS only)	VWFL
Super Wide Flood (DSS only)	SWFL
Factory Options	
Emergency Battery Remote	EMR
(J-box cannot be recessed above the ceiling. Remote test switch)	
Reflector Color	
Clear Diffuse	CD
Warm Diffuse	WD
White	WH
Black	BK
Luminaire Finish	
Black	BK
White	WH
Palladium Silver	PS
Custom Color options available	RAL_ _ _ _

Finishes



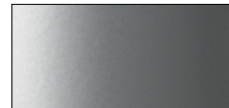
HOUSING/CANOPY FINISHES



WHITE WH



BLACK BK



PALLADIUM SILVER PS

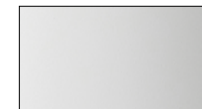
REFLECTOR FINISHES



CLEAR DIFFUSE CD



WARM DIFFUSE WD



WHITE WH



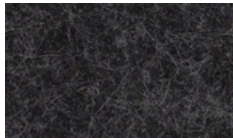
BLACK BK

PET MATERIAL

STANDARD COLORS



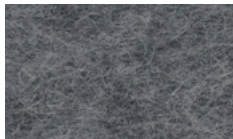
PURE BLACK PBK



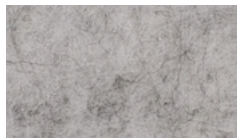
CHARCOAL GRAY CHG



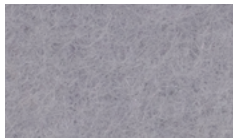
SLATE SLT



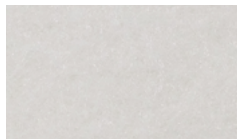
SHADOW GRAY SDG



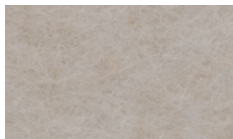
SILVER GRAY SLG



PEARL ICE PIC



CLASSIC WHITE CWH

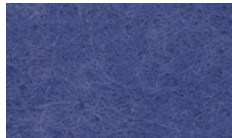


NATURAL LINEN NTL



HAZELWOOD HZW

PREMIUM COLORS*



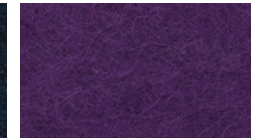
CORNFLOWER BLUE CFB



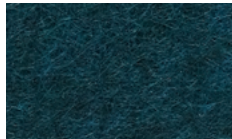
DENIM BLUE DNB



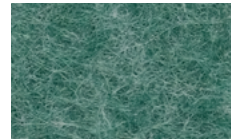
MIDNIGHT BLUE MNB



DEEP PURPLE DPP



DEEP WATER DWT



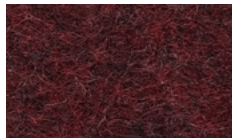
SEAFOAM SFM



EMERALD GREEN EMG



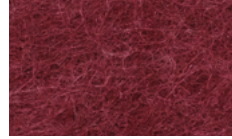
LIMESTONE LMS



BRICK RED BRD



CHERRY RED CHR



BERRY BRY



BLUSH BLS

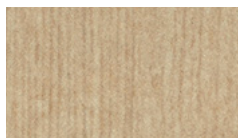


CARROT CRT

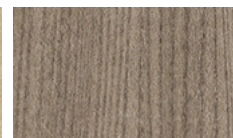


PINEAPPLE PNA

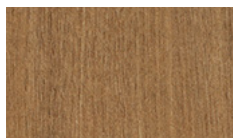
THE NATURALS (25% SCALE)



LIGHT OAK LOK



GRAY ELM GRE



CHESTNUT CHT



WALNUT WLT

Declare.

PET
Focal Point, LLC

Final Assembly: Chicago, Illinois, USA
Life Expectancy: 30 Year(s)
End of Life Options: Salvageable/Reusable in its Entirety, Recyclable (100%)

Ingredients:

Polyethylene terephthalate: PET; **N, N'-Ethylene bisstearamide:** Octadecanamide, N,N'-1,2-ethanediylbis-; **Stearic Acid:** Stearic Acid; **Antioxidant 1076:** Benzenepropanoic acid, 3,5-bis(1,1-dimethylethyl)-4-hydroxy-, octadecyl ester; **Antioxidant KY-405:** Benzenamine, 4-(1-methyl-1-phenylethyl)-N-[4-(1-methyl-1-phenylethyl)phenyl]; **Titanium Dioxide:** Titanium dioxide

Living Building Challenge Criteria:

I-13 Red List:

☒ LBC Red List Free % Disclosed: 100% at 100ppm
☒ LBC Red List Approved VOC Content: Not Applicable
☒ Declared

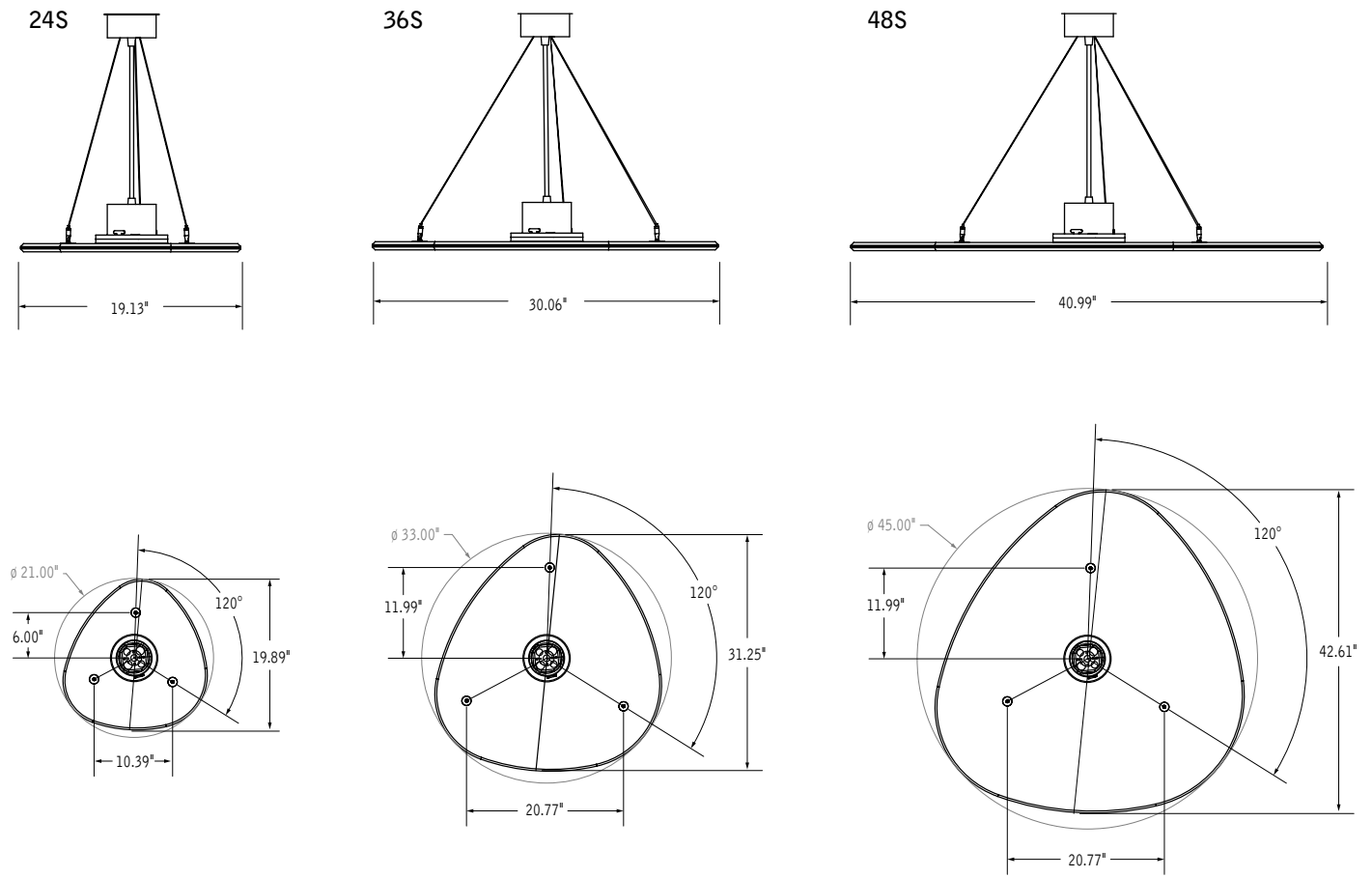
I-10 Interior Performance: Not Compliant
I-14 Responsible Sourcing: Not Applicable

FPL-0001
EXP. 01 JUN 2026
Original Issue Date: 2020

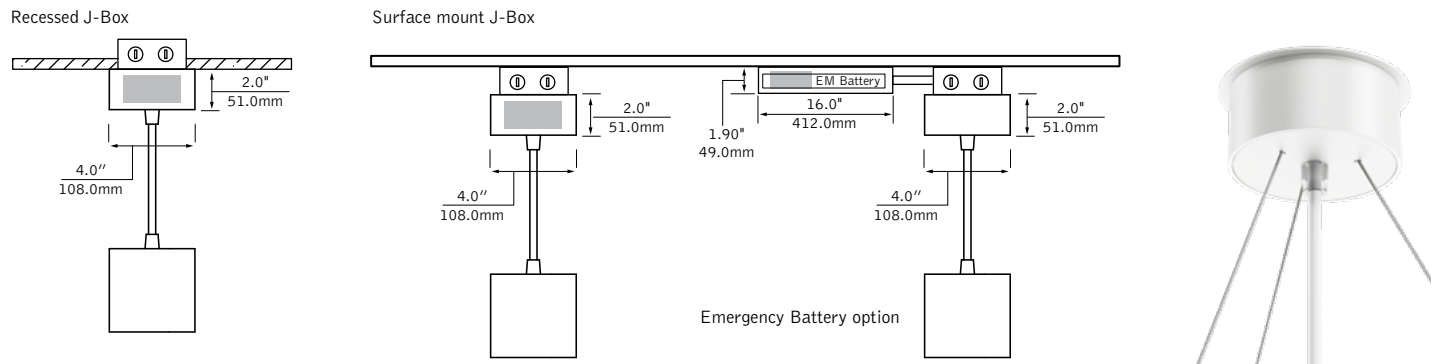
MAX FACTORY RESPONSIBLE FOR LABEL ACCURACY
INTERNATIONAL LIVING FUTURE INSTITUTE™ living-future.org/declare

*Contact factory for lead time and pricing.

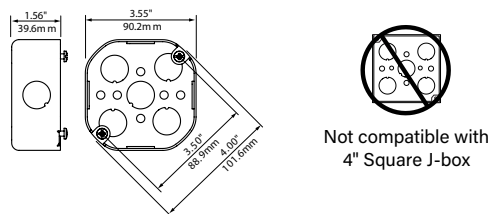
DIMENSIONAL DATA CONTINUED



Mini-Power Canopy (shown with cylinder only)



4" Octagonal J-Box required (by others)



LUMEN MULTIPLIER TABLE

Optic & Distribution

Trim Type	Optic	Distribution	Multiplier
	Short Cone with 60° cut-off [DNS]	Narrow Flood [NFL]	0.99
		Flood 1 [FL1]	0.96
		Flood 2 [FL2]	0.92
		Wide Flood [WFL]	0.95
	Super Short Cone with Solite Lens with 75° cut-off [DSS]	Narrow Flood [NFL]	0.95
		Flood 1 [FL1]	0.89
		Flood 2 [FL2]	0.94
		Wide Flood [WFL]	0.93
		Very Wide Flood [VWFL]	1.00
		Super Wide Flood [SWFL]	0.95

Reflector Color

Trim Type	Optic	Distribution	Multiplier
	Short Cone with 60° cut-off [DNS]	Clear Diffuse [CD]	1.00
		Warm Diffuse [WD]	0.96
		White [WH]	1.12
		Black [BK]	0.62
	Super Short Cone with Solite Lens with 75° cut-off [DSS]	Clear Diffuse [CD]	1.00
		Warm Diffuse [WD]	0.97
		White [WH]	1.16
		Black [BK]	0.86

Color Lumen Multipliers

CRI	STANDARD WHITE CCT			
	2700	3000	3500	4000
80+	0.92	0.98	1.00	1.01
90+	0.76	0.79	0.82	0.84
97+	0.67	0.72	0.76	0.76

How To Use Lumen Multipliers

Formula: (Lumen Output Value) x (Color Temperature & CRI) x (Optic & Distribution)

Example: FLCY3N-RD-1000DN-35K-DNS-FL1-CD
(1000) x (1.00) x (0.96) ≈ 960 lm (estimated delivered lumens)