

Polina™ Acoustic

PENDANT | APOLP-SHX-27-MPC | APOLP-SHX-42-MPC



FOCAL POINT®



BEFORE YOU BEGIN

- Luminaires must be installed by a qualified electrician (check with local and national codes for proper installation).
- To prevent electrical shock, disconnect electrical supply before installation or servicing.
- Contractor is responsible for adequately reinforcing walls and/or ceilings to support fixture weight.
- Focal Point, LLC accepts no responsibility for inadequately reinforced walls and/or ceilings.
- The information contained in this drawing is the sole property of Focal Point, LLC. Any reproduction in part or whole without the written permission of Focal Point, LLC is prohibited.

INSTRUCTION KEY



ATTENTION



SEE ADDITIONAL INSTRUCTIONS



POWER OFF



POWER ON

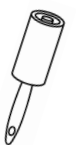
HANDLING & CLEANING



Always handle with clean white gloves (provided).



Use can of compressed air to remove dust and debris from shade and dust cover.



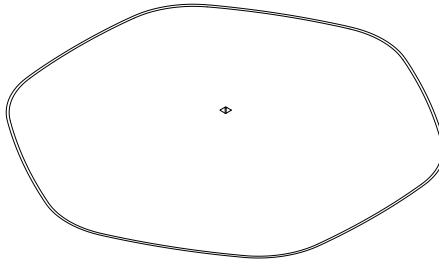
Use lint roller to gently lift any remaining debris from shade.



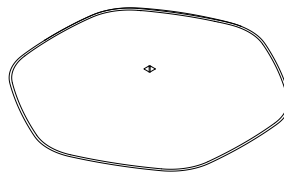
Lightly wipe dust cover with damp cloth. Do not leave excess moisture on surface.

COMPONENT KEY

ACOUSTIC SHADES



42" Shade



27" Shade

LIGHT ENGINE



STEM SPACER



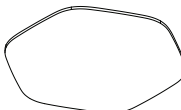
NUT



LED MODULE

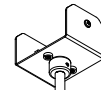


LOCKNUT



FACE PLATE

STEM MOUNT



STEM MOUNTING BRACKET

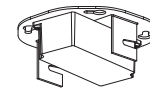


FACE PLATE



STEM

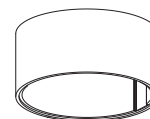
MINI POWER CANOPY



J-BOX MOUNTING BRACKET / DRIVER CARRIAGE



FINISHING RING



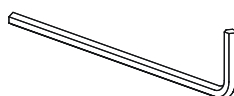
MINI POWER CANOPY

SHIPPED INSTALLED



#273 SET SCREWS

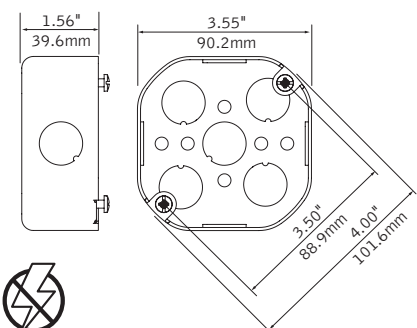
SHIPPED IN PARTS BAG

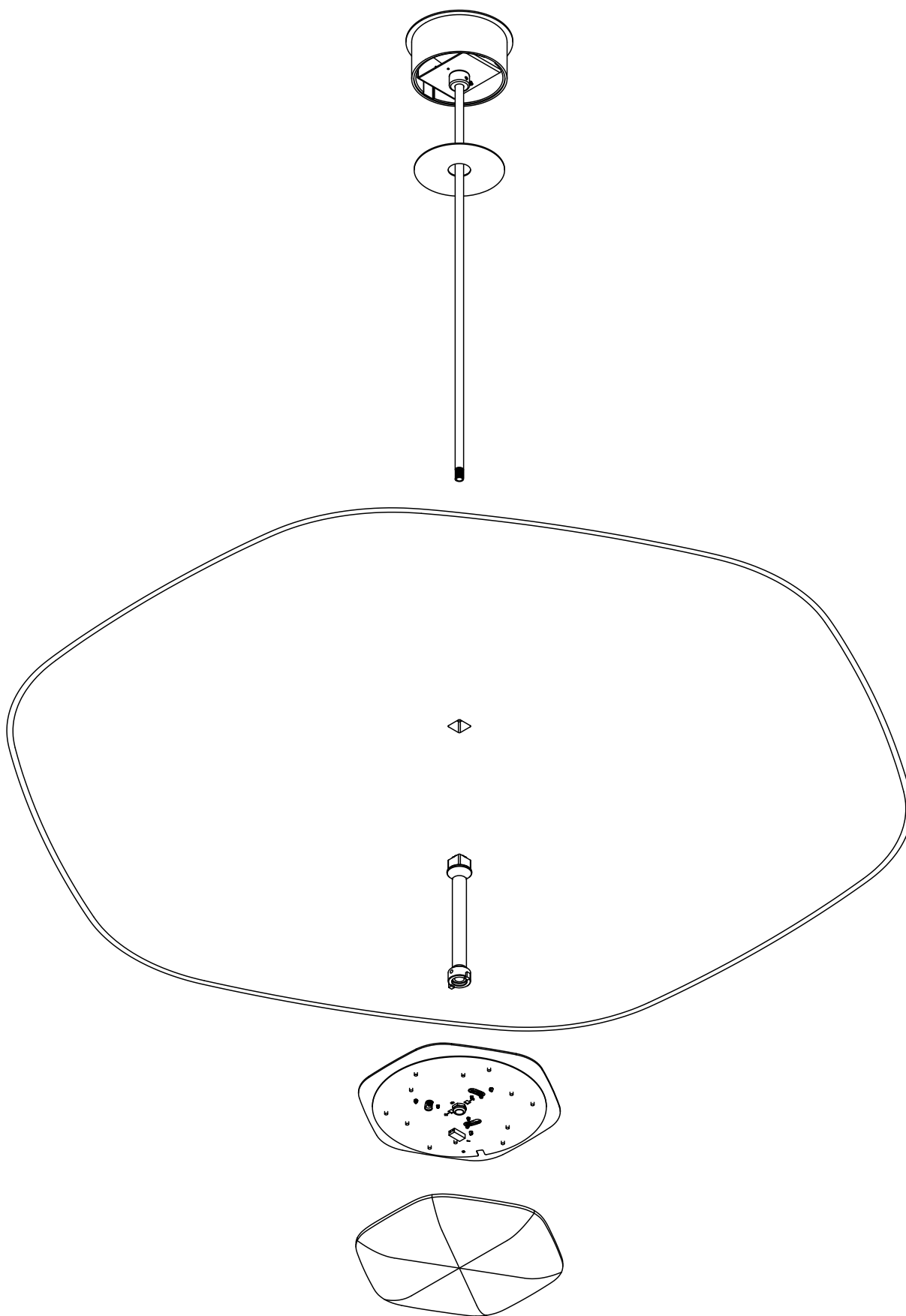


ALLEN WRENCH

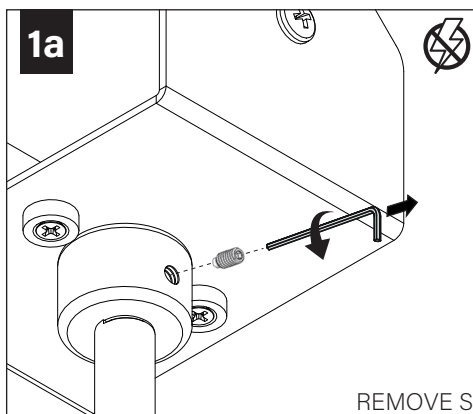
4" OCTAGONAL J-BOX REQUIRED

J-BOX BY OTHERS

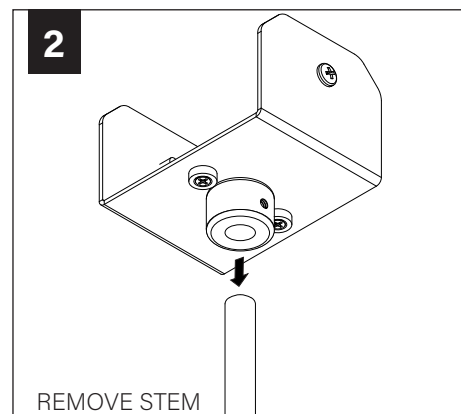
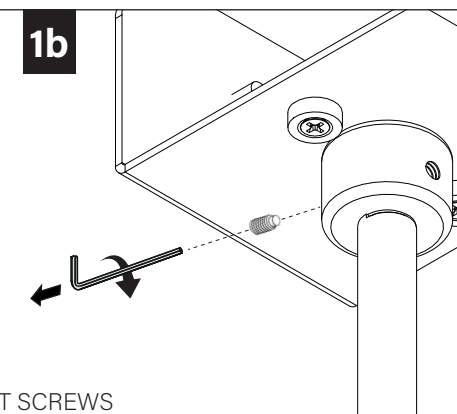




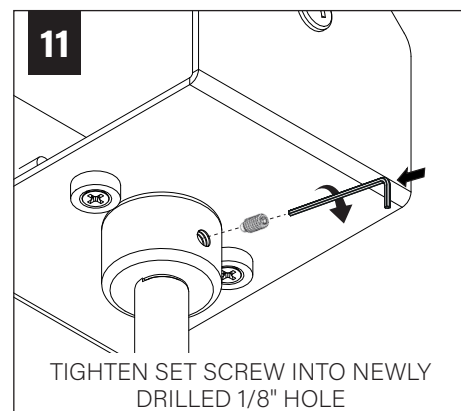
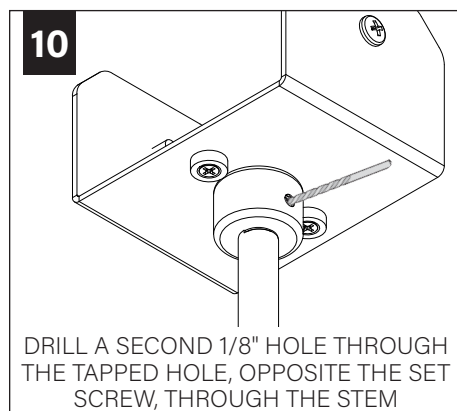
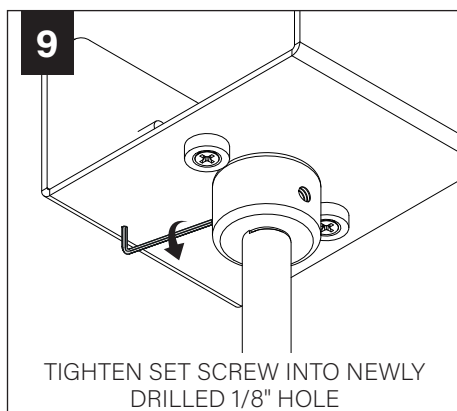
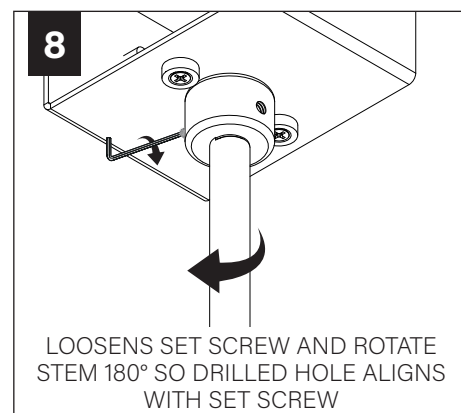
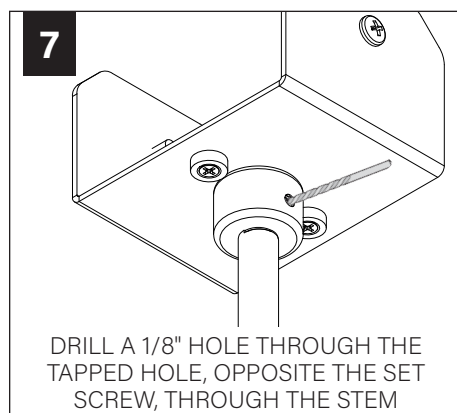
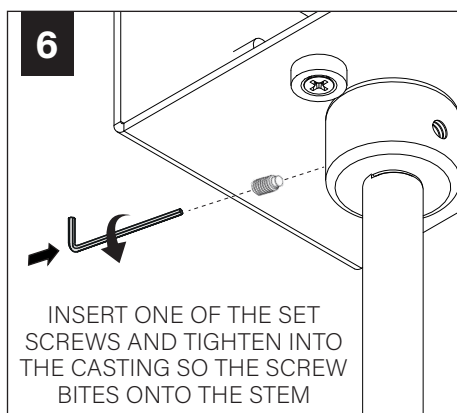
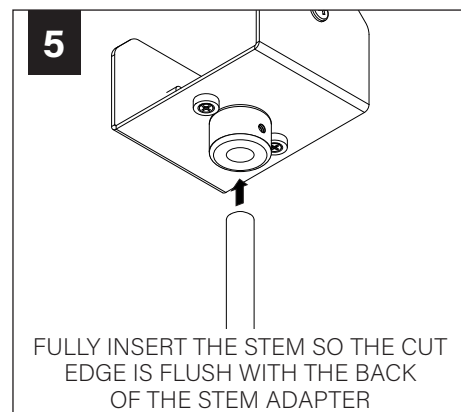
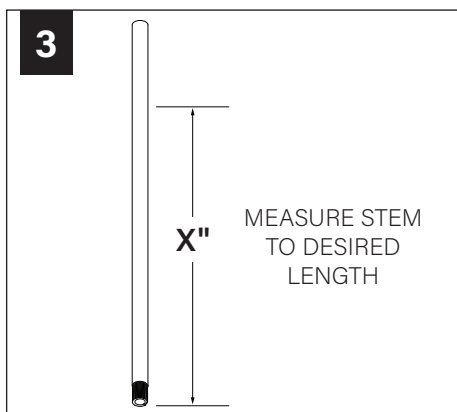
FIELD CUTTABLE STEM (OPTIONAL)



REMOVE SET SCREWS

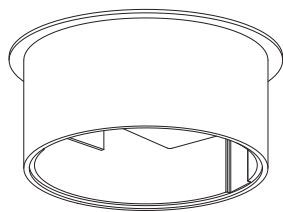


REMOVE STEM



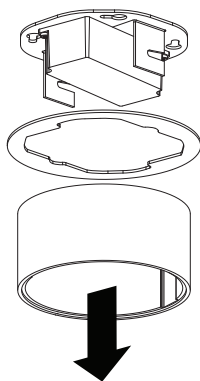
MINI POWER CANOPY INSTALLATION

1

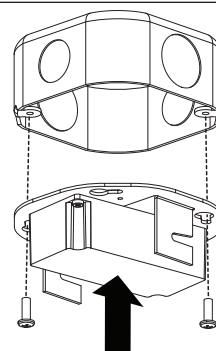


CANOPY ASSEMBLY SHIPS ASSEMBLED

2



3

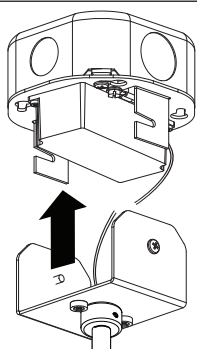


HARDWARE
BY OTHERS



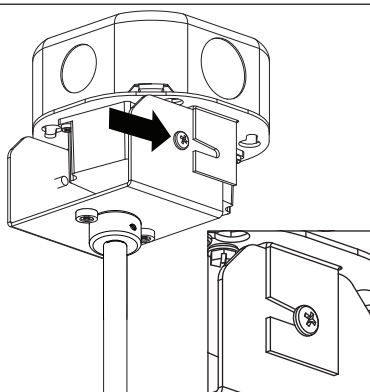
MAKE ELECTRICAL CONNECTION

4

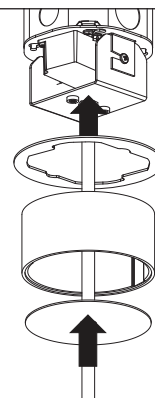


MAKE ELECTRICAL CONNECTION

5

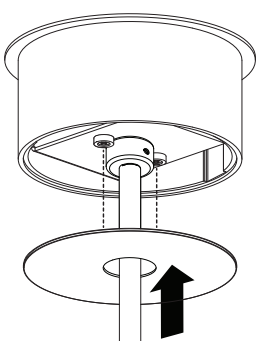


6



INSTALL CANOPY
ASSEMBLY PARTS
SIMULTANEOUSLY

7



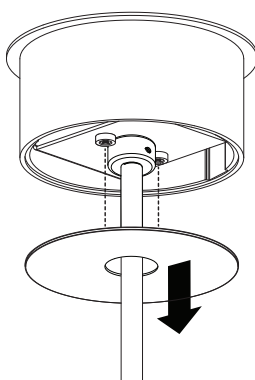
FACE PLATE HELD IN PLACE MAGNETICALLY

DRIVER SERVICE

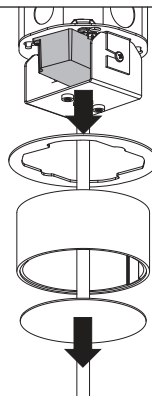


TURN OFF POWER SOURCE
PRIOR TO DRIVER SERVICE

1

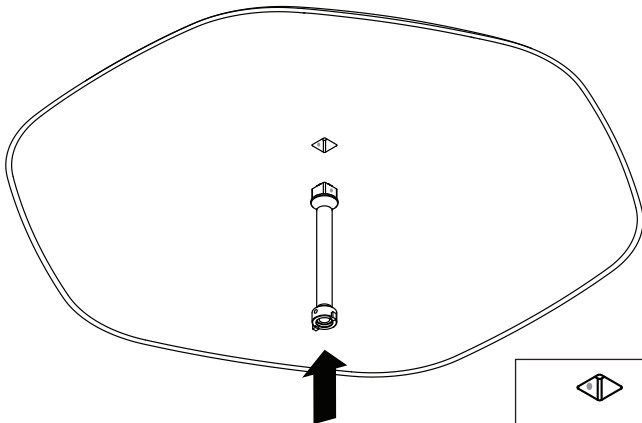


2

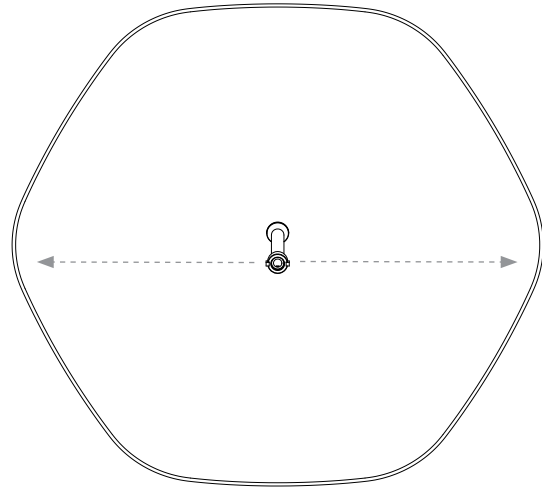


ACOUSTIC SHADE AND LED MODULE

1

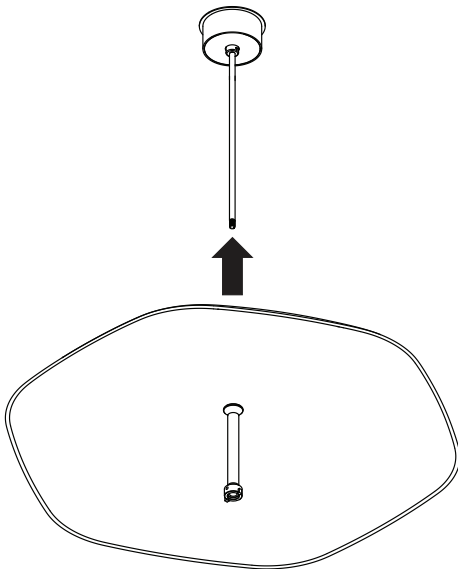


ALIGN GREEN DOTS ON SPACER WITH
GREEN DOTS ON SHADE

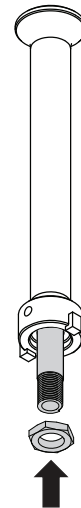


SPACER PEGS MUST BE ORIENTED TOWARD
POINTED SIDES OF SHADE, NOT FLAT SIDES

2a

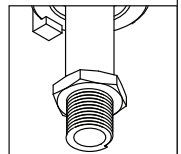


2b

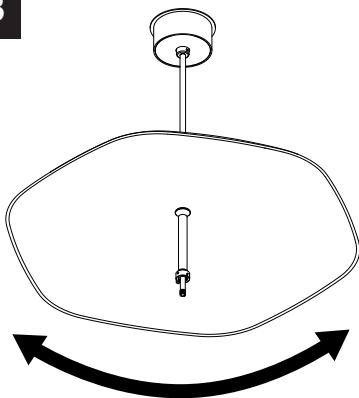


TIGHTEN BY HAND.
DO NOT OVERTIGHTEN.

FEED STEM THROUGH BACK OF SHADE INTO
SPACER AND TIGHTEN NUT TO STEM

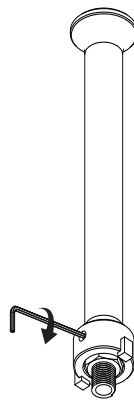


3



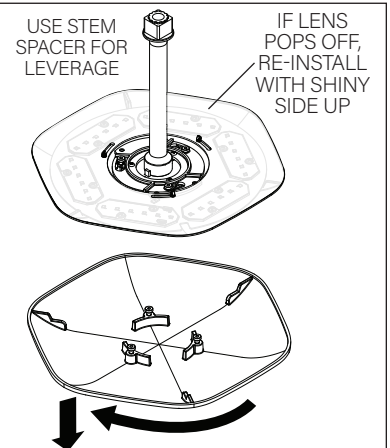
ROTATE SHADE TO DESIRED ORIENTATION

4



TIGHTEN SET SCREW IN STEM SPACER TO
LOCK SHADE INTO PLACE

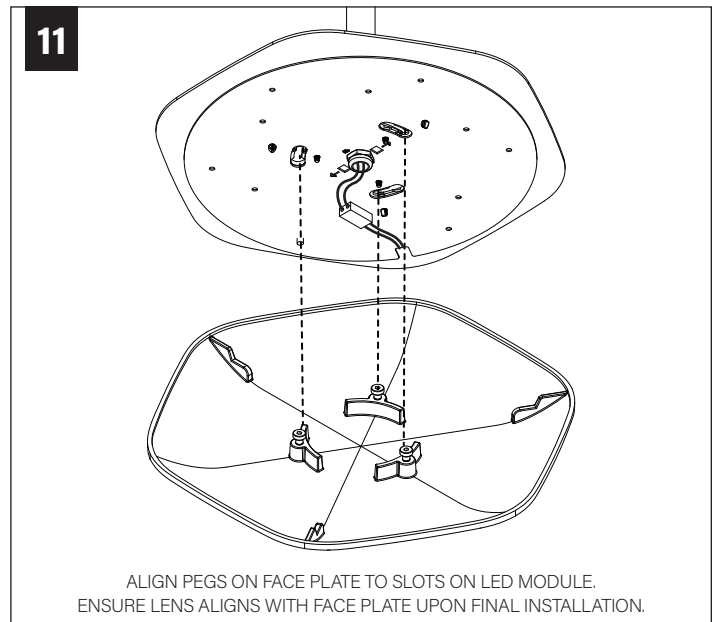
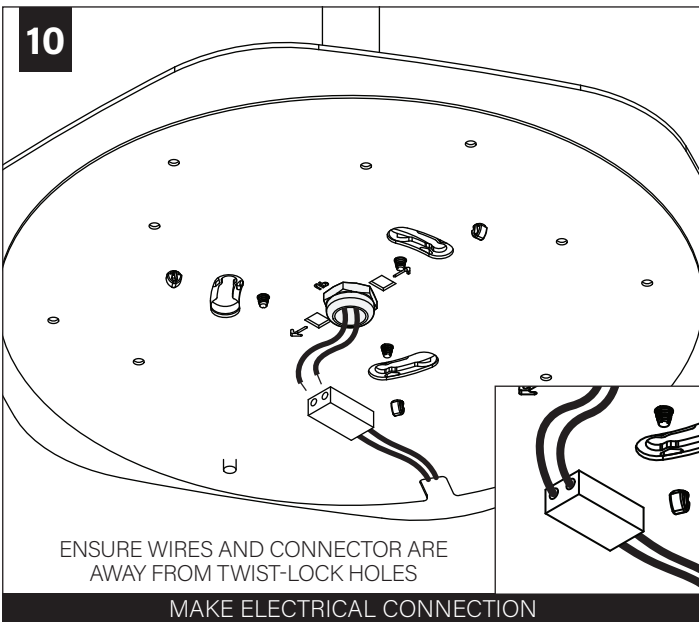
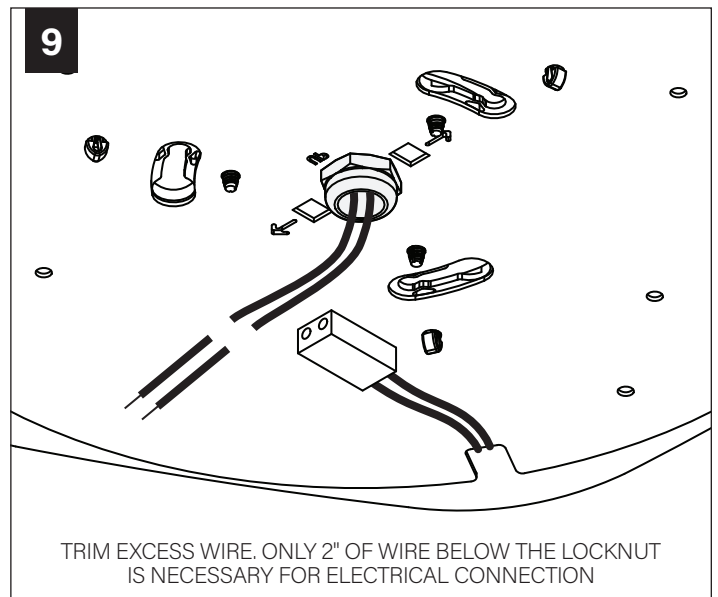
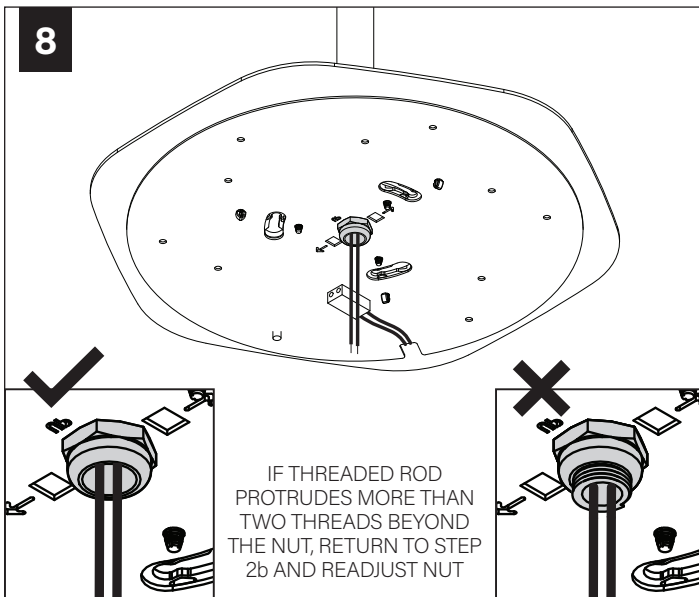
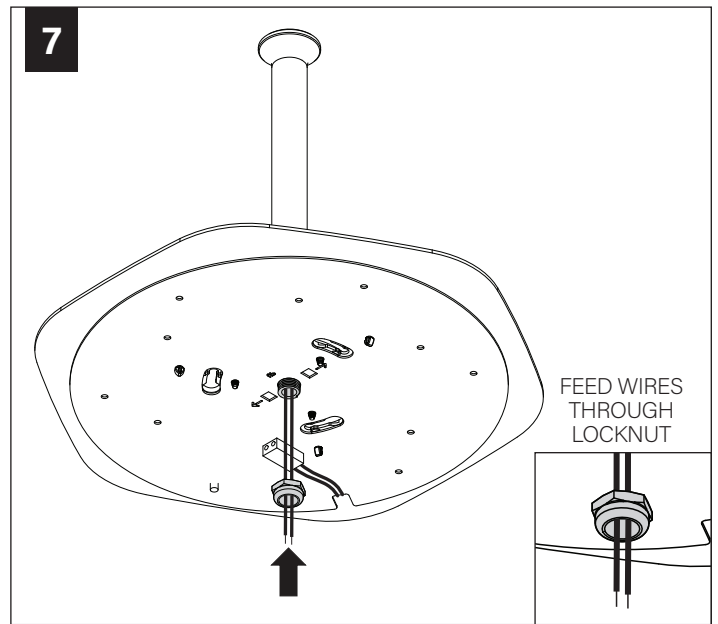
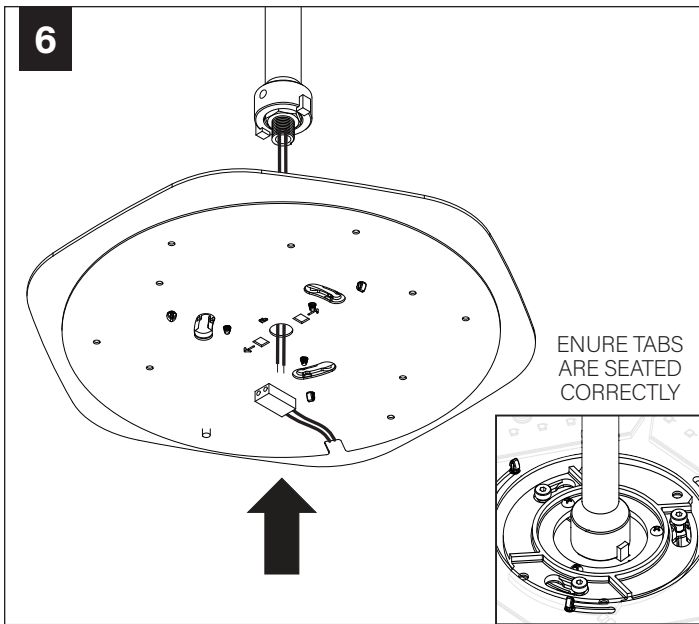
5



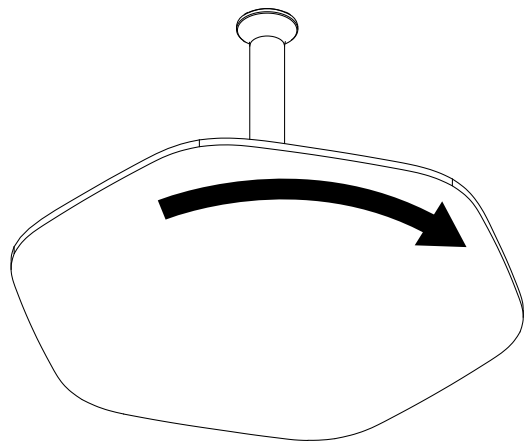
USE STEM
SPACER FOR
LEVERAGE

IF LENS
POPS OFF,
RE-INSTALL
WITH SHINY
SIDE UP

TWIST TO UNLOCK AND REMOVE
FACEPLATE FROM LED MODULE



12



TWIST AND LOCK FACEPLATE INTO PLACE

13

