

id+ 3.5" square housing

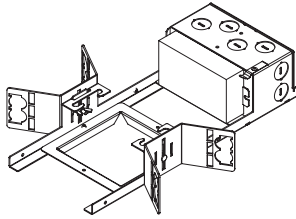
FLC33D | FLC33W



FOCAL POINT®

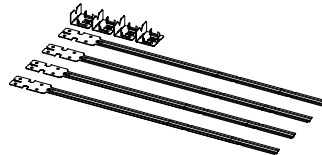
! LUMINAIRE MUST BE INSTALLED PRIOR TO DRYWALL CEILING. ALL GRID LUMINAIRES MUST BE SECURED TO STRUCTURE ABOVE. !

NON-EMERGENCY - THERMALLY PROTECTED, NON-IC



FLC33D | FLC33W

! OPTIONAL BAR HANGERS SOLD SEPARATELY



KEY



POWER OFF



POWER ON



ATTENTION

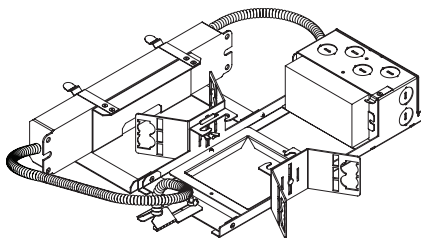


LEVEL



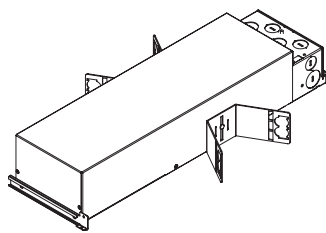
SEE ADDITIONAL INSTRUCTIONS

EMERGENCY - REMOTE TEST SWITCH, NON-IC



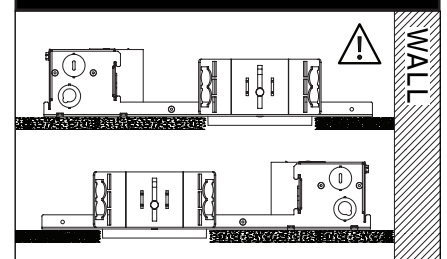
FLC33D | FLC33W

IC/CP

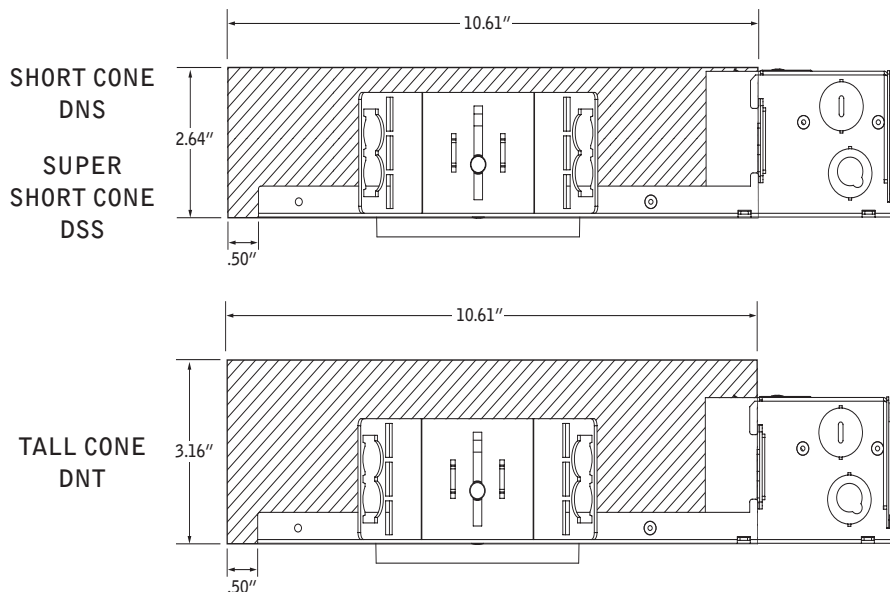


FLC33D | FLC33W

WALL WASH ORIENTATION

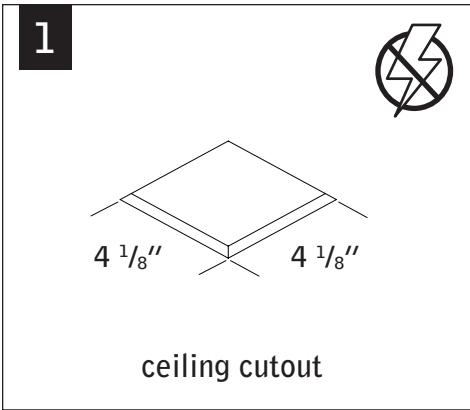


KEEP SHADED AREA FREE FROM OBSTRUCTION ABOVE CEILING

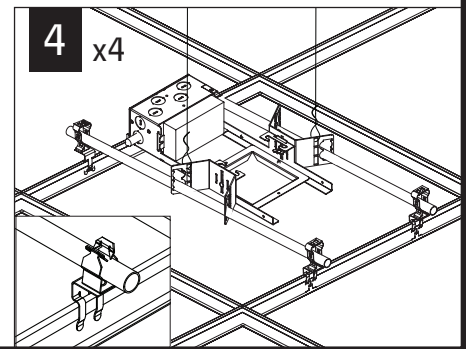
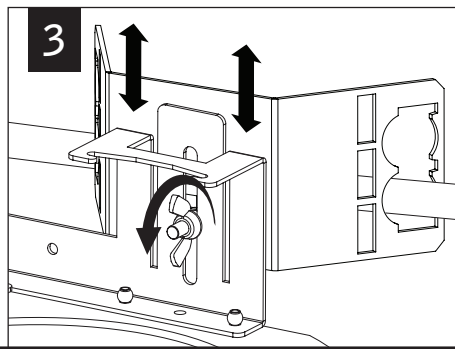
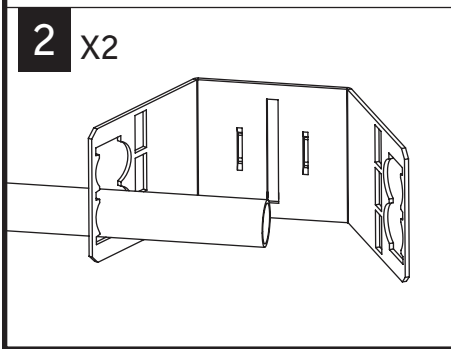


FOR ASTM E-283 AIR-TIGHT COMPLIANCE, SEAL IC HOUSING/RO TRIM WITH SILICONE CAULKING BETWEEN THE EDGE OF THE COLLAR AND CEILING MATERIAL. SEAL ALL ADDITIONAL HOLES IN HOUSING WITH ALUMINUM TAPE.

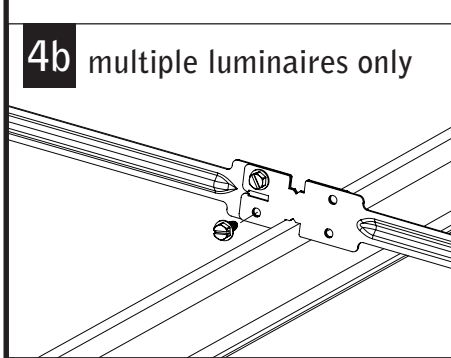
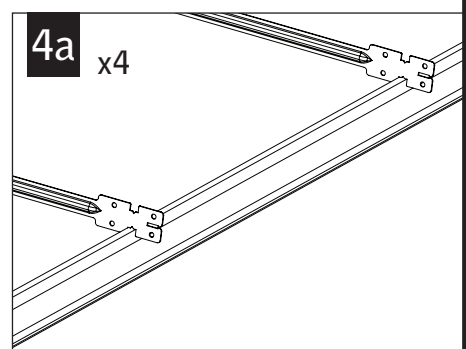
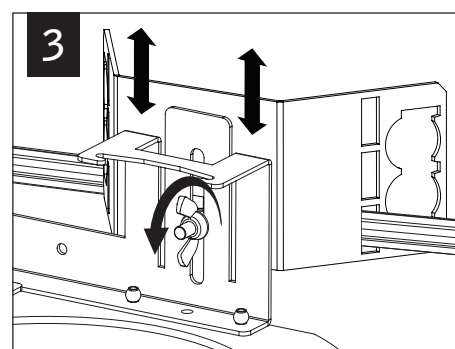
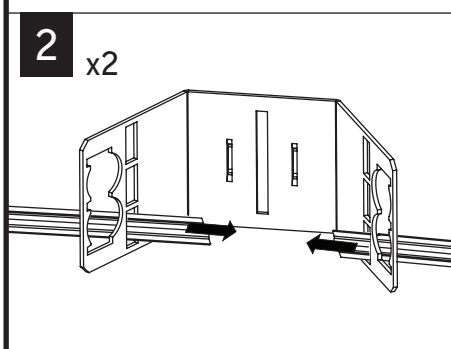
Luminaires must be installed by a qualified electrician (check with local and national codes for proper installation). To prevent electrical shock, disconnect electrical supply before installation or servicing.



GRID - 1/2" CONDUIT & CLIP (BY OTHERS)



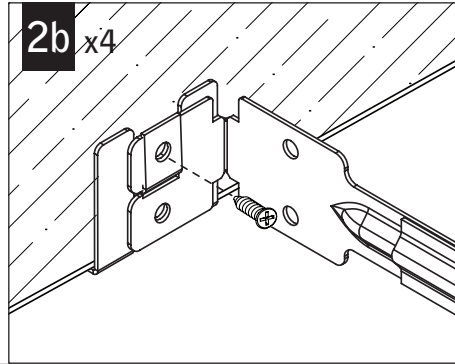
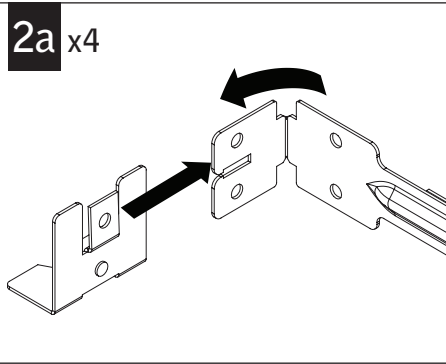
GRID - BAR HANGERS (SOLD SEPARATELY)



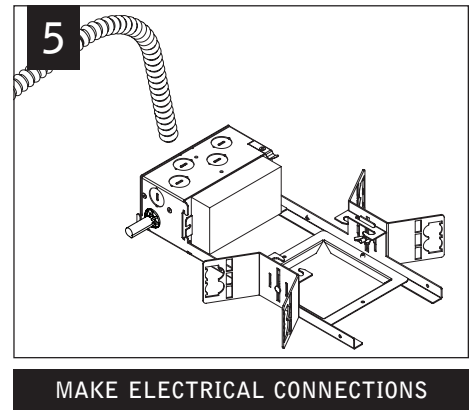
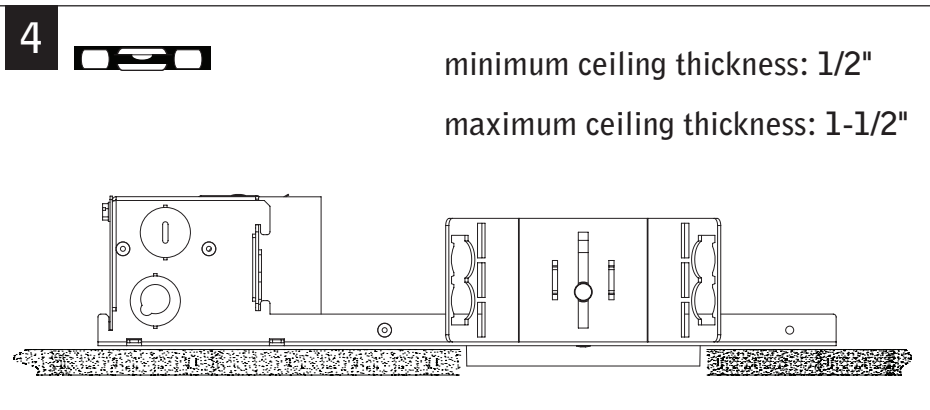
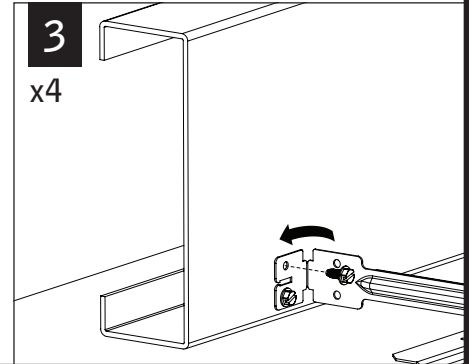
Fixtures must be installed by a qualified electrician (check with local and national codes for proper installation).
To prevent electrical shock, disconnect electrical supply before installation or servicing.

DRYWALL - BAR HANGERS

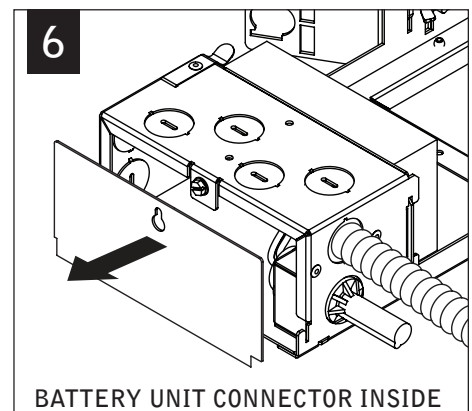
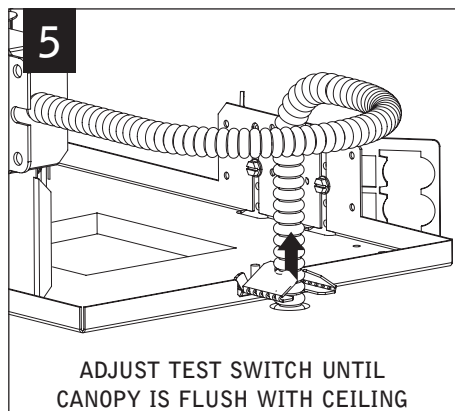
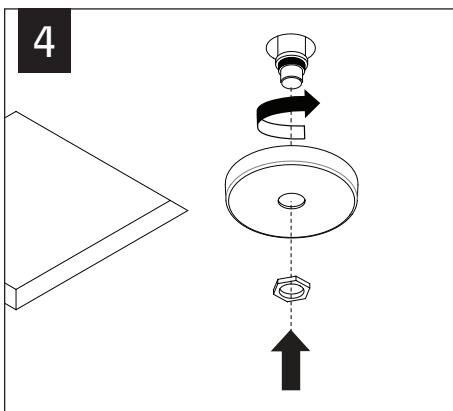
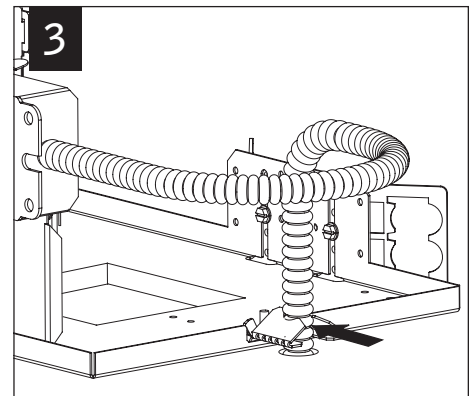
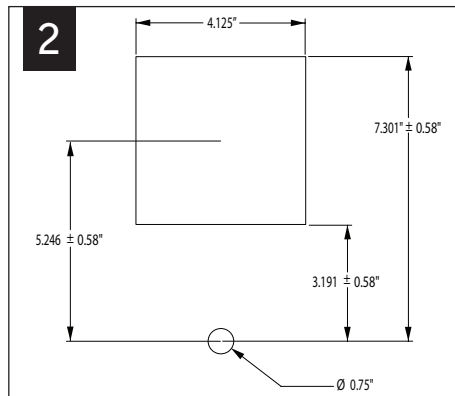
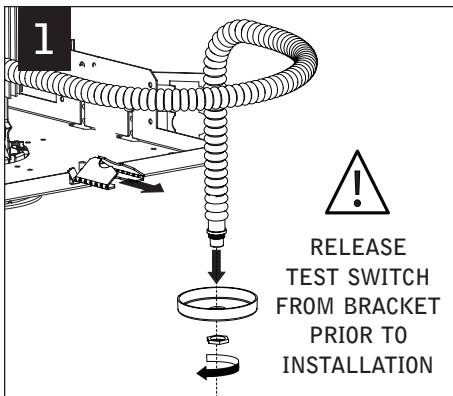
WOOD STUDS



METAL STUDS



EMERGENCY - REMOTE TEST SWITCH ABOVE CEILING ACCESS REQUIRED



Fixtures must be installed by a qualified electrician (check with local and national codes for proper installation).
To prevent electrical shock, disconnect electrical supply before installation or servicing.

7



SEE BATTERY
MANUFACTURER
INSTRUCTIONS



DO NOT MATE BATTERY
UNIT CONNECTOR
UNTIL INSTALLATION
IS COMPLETE AND A.C.
POWER IS SUPPLIED

EM- MOUNTING HEIGHT



SEE BATTERY MANUFACTURER
INSTRUCTIONS

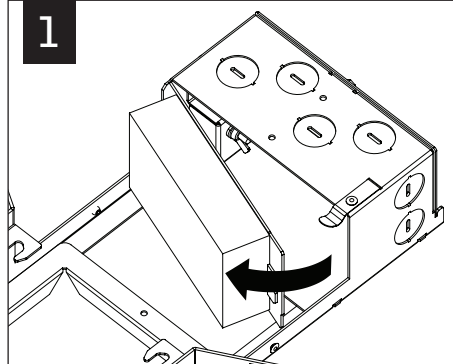
EMERGENCY MAXIMUM MOUNTING HEIGHT:
DOWNLIGHT: 20.7'
WALLWASH: 15.6'

DRIVER SERVICE

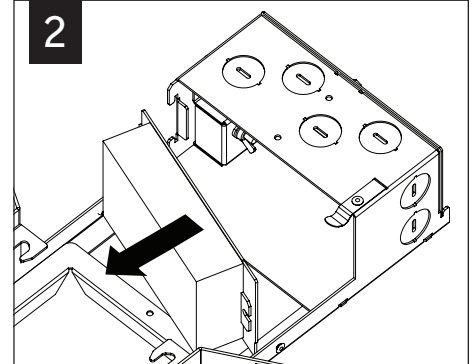


TO PREVENT ELECTRICAL SHOCK,
DISCONNECT ELECTRICAL SUPPLY
BEFORE SERVICING

1



2



Contractor is responsible for adequately reinforcing walls and/or ceilings to support fixture weight. Focal Point, LLC accepts no responsibility for inadequately reinforced walls and/or ceilings. The information contained in this drawing is the sole property of Focal Point, LLC. Any reproduction in part or whole without the written permission of Focal Point, LLC is prohibited.