

s k y



FOCAL POINT®

s k y

from Focal Point.

Get ready for something BIG. Focal Point is pleased to add the 4'x4' version of Sky™ to the already popular 2' x 2' variety. With its symmetrical lines and quadrapartite-inspired architectural sensibility, Sky adds uncompromising style and art to virtually any environment. Bold, beautiful, affordable and extremely easy to maintain.

[Now available.](#)



FLORIO
S.O.M.

Sky delivers a refreshing, crisp and finished look. High-angle, soft & uniform distribution highlights interior architecture. Two-foot varieties are a great choice for small or open offices, corridors, or other stylized environments. Four-foot versions illuminate boardrooms, corridors, lobbies, concourses or any high ceiling condition on a grand scale. Combine both 2' and 4' luminaires in the same application to furnish a unique and cohesive aesthetic.



ABOVE MIDDLE AND OPPOSITE PAGE: Kurtz Associates Architects, Des Plaines, IL
Photo: Hedrich Blessing (Bob Harr).

ABOVE LEFT: Private Conference Area, Chicago, IL
Designer: AFKED Designs Photo: Hotshots Imaging (Mike McKenzie).





ABOVE: Landor Associates, Cincinnati, OH
Photo: OMS Photo, Cincinnati, OH.

BELOW: Kurtz Associates Architects, Des Plaines, IL
Photo: Hedrich Blessing (Bob Harr).

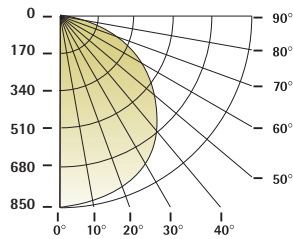


Sky 2'x2' and 4'x4' allow for easy installation in drywall or grid ceiling conditions. Perforated lamp shields remove easily for relamping, and conceal lamps on all four sides. Bix and T5HO configurations are available with dimming options.

FSK-22



4 lamp T5

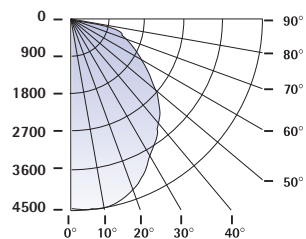


4 Lamp 55w Bix = 19,200 Total Available Lumens
4 Lamp T5 = 5400 Total Available Lumens
4 Lamp T5HO = 8000 Total Available Lumens

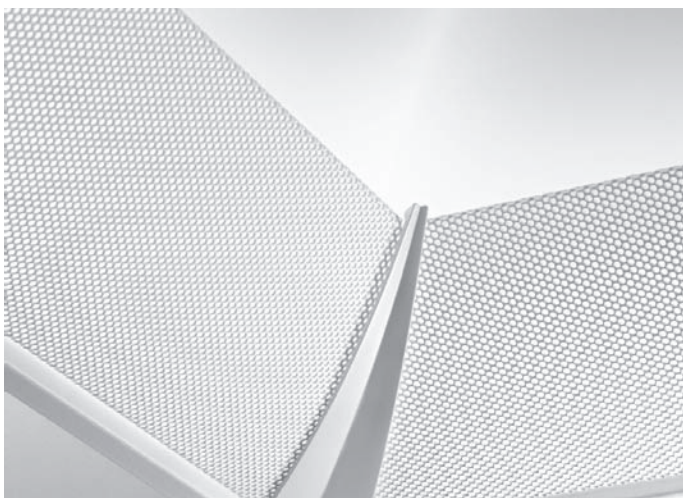
FSK-44



8 lamp T5



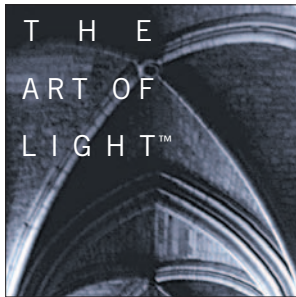
4 Lamp T5 = 11,600 Total Available Lumens
4 Lamp T5HO = 20,000 Total Available Lumens
8 Lamp T5 = 23,200 Total Available Lumens



DETAILS

Corner castings elegantly join side shields, and initiate Sky's quadripartite vault form.

Focal Point's four-foot unit features a unique Cam-Actuated Shielding Extension Mechanism that allows for complete simplicity when accessing or replacing lamps. Maintenance may be performed by one person.



FOCAL POINT LLC
4201 South Pulaski Road
Chicago, Illinois 60632
t 773.247.9494
f 773.247.8484

www.focalpointlights.com