

# Mora®

INTEGRATED ACOUSTIC CEILING  
AND LIGHTING SYSTEM

## WORLD TIME ZONES



PEKIN  
+11



TOKYO  
+10



NEW YORK



LONDON  
+5



MOSCOW  
+8



**FOCAL POINT®**

Bringing It All To Light™

A brand of **legrand**





BLUSH

## Create a signature piece and increase occupants' comfort with Mora®

Mora is an integrated acoustic ceiling and lighting system that adds movement and texture to the ceiling plane while optimizing the light levels and acoustics of interior environments. Specification is made easy with Mora Build, Mora Create and Mora Inspire, and the support of our dedicated team.





## Mora Build

Square modules that are the building blocks of a ceiling system



## Mora Create

Standard designs scaled to the dimensions of the room



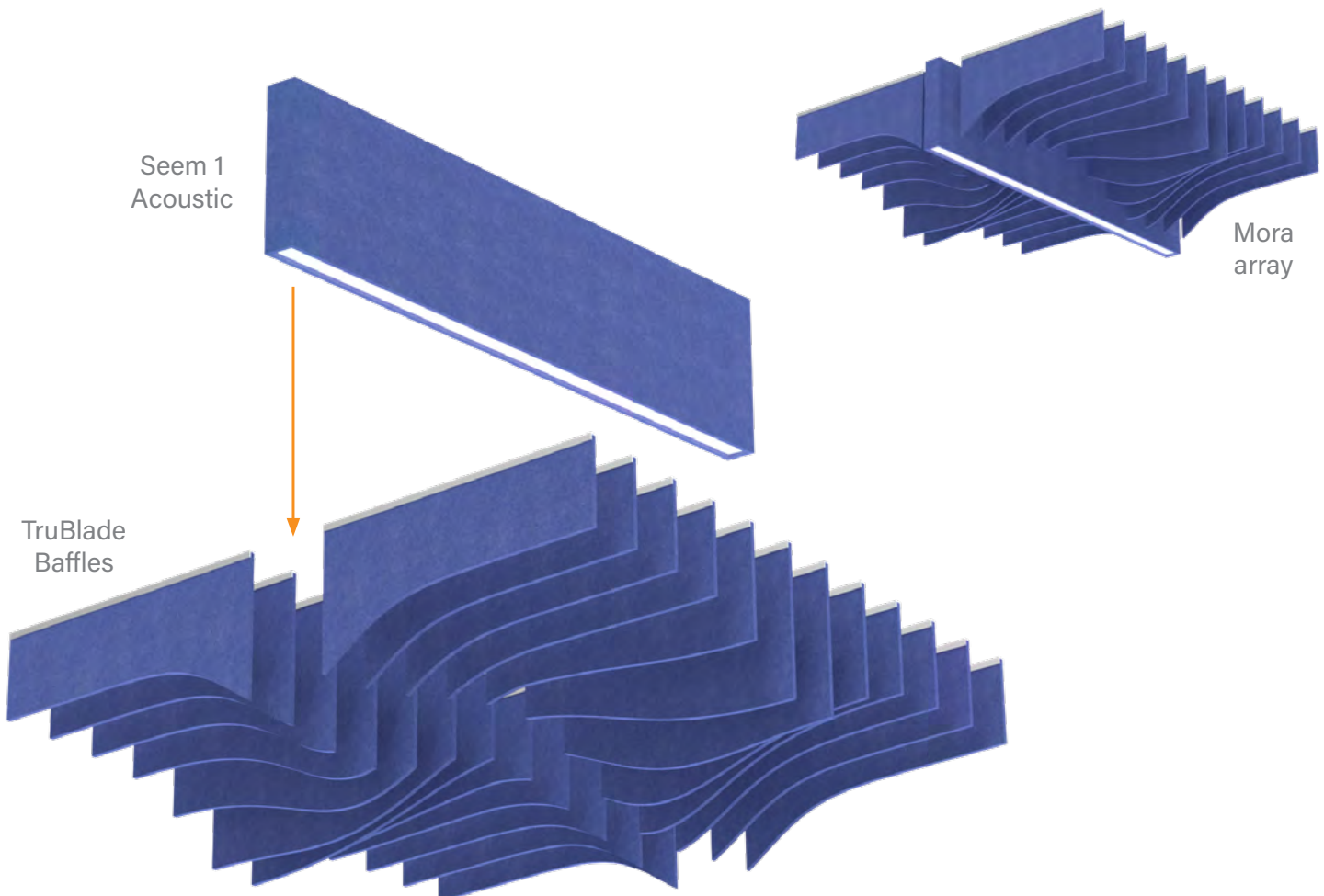
## Mora Inspire

A custom design realized with the help of our team

# Advantages of the Mora system

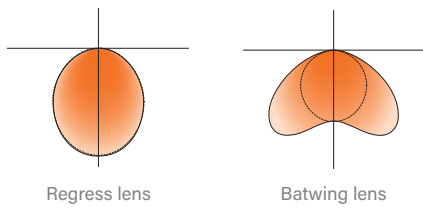
Mora leverages the light engine and acoustic performance of Seem® 1 Acoustic and the flexibility of the TruBlade™ unlit baffle to create exceptional ceiling arrays that not only enhance interior architecture, but also contribute to human comfort and well-being.

- **Integrated lighting and acoustic ceiling system**
  - Eases specification, ordering, delivery, and installation
  - Ensures perfect coordination of the lit and unlit components
- **Design support**
  - Lighting and acoustic calculations
  - Customization
- **Extensive lighting and design options**
  - Multiple shielding, lumen outputs, CCT, CRI, and driver/control options
  - Broad palette of eco-friendly PET felt colors



## SEEM 1 ACOUSTIC

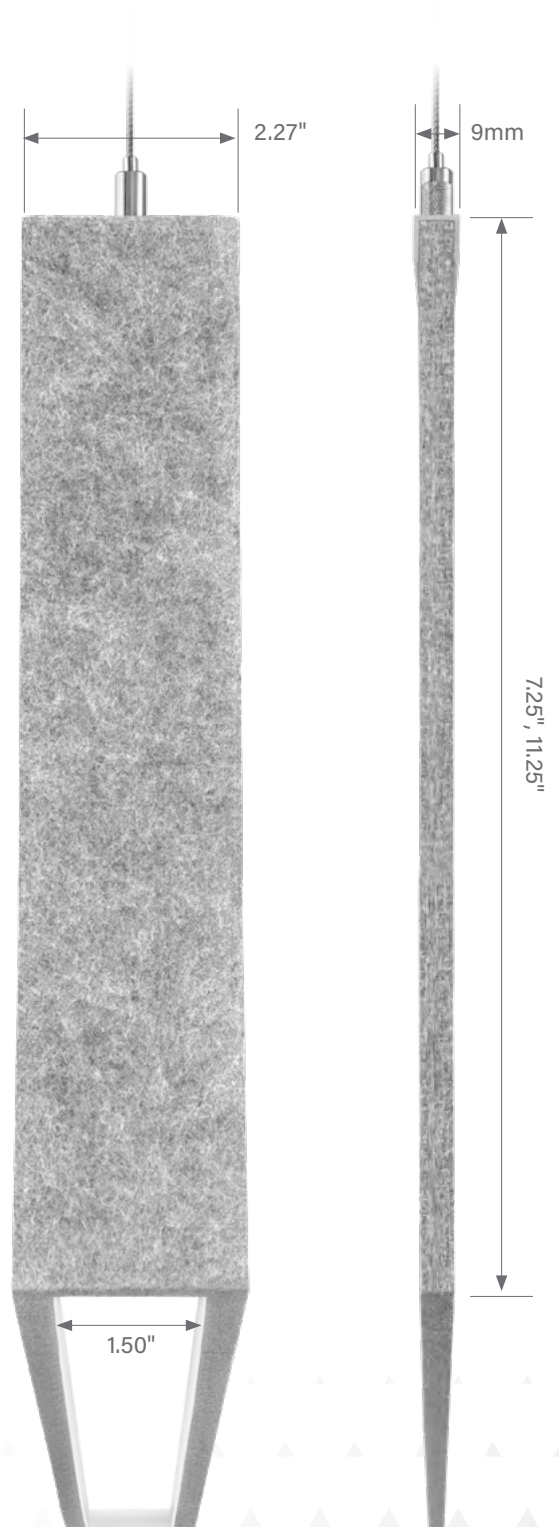
- Narrow luminaire: 1.5" lens aperture / 2.27" housing width
- Direct only light distribution
- Regress or batwing lens



- 100, 200, 300, 400 or 500 lumens per foot
- 3000K, 3500K or 4000K
- 80 or 90 CRI
- 0-10V, DALI or Lutron EcoSystem® dimming
- Uses AirCore™ Technology to maximize sound absorption and minimize ecological impact
- Some designs require a fixed luminaire length, others can be continuous runs

## TRUBLADE

- 9mm baffle width
- Designed to optimize affordability, stability and straightness

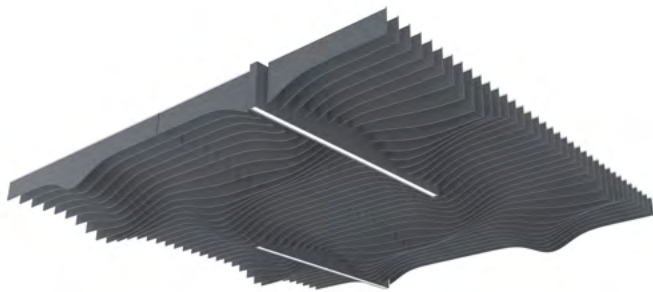




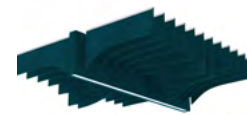
# Select your level of customization with Mora Build, Mora Create, and Mora Inspire

## MORA BUILD

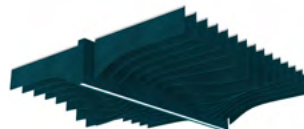
Mora Build literally offers the building blocks to your next acoustic ceiling. The two standard designs of Arch and Wave are available in nominal square modules from 4 to 8 feet, lit or unlit. Several modules can be combined over large surface areas, resulting in rhythmic and playful ceilings.



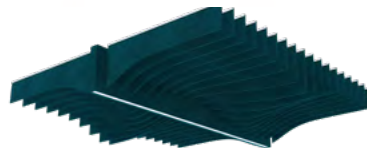
Wave array  
2 lit and 2 unlit modules



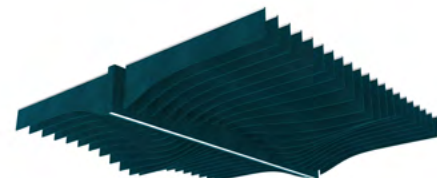
4x4



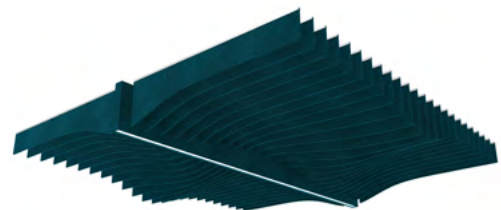
5x5



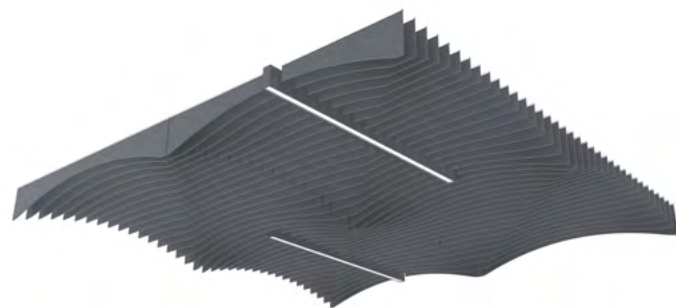
6x6



7x7



8x8

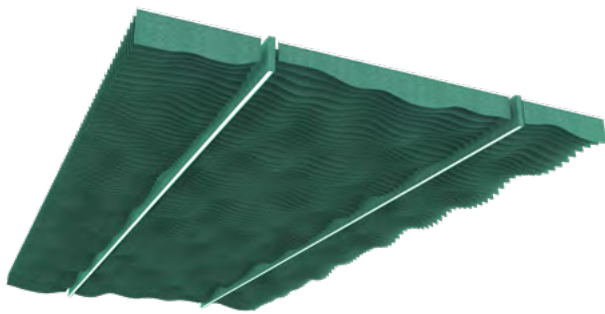


Arch array  
2 lit and 2 unlit modules



## MORA CREATE

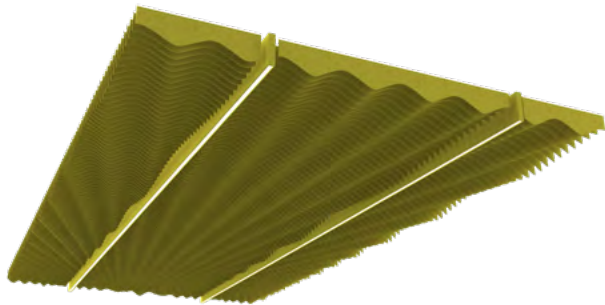
Mora Create gives you the freedom to design custom-sized arrays to fit the exact dimensions of your room using three designs: Ripple, Radiate, or Alpine. Each offers a unique visual aesthetic and allows for placement of continuous luminaires to fulfill the lighting requirements of the space.



Ripple



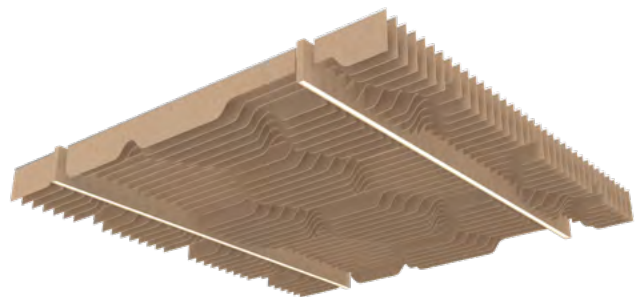
Alpine



Radiate

## MORA INSPIRE

Let your imagination run wild with the support of our design and engineering team. We will turn your inspiration into a showpiece ceiling. Contact us at [acoustic.solutions@focalpointlights.com](mailto:acoustic.solutions@focalpointlights.com) to discuss your project.



# How to specify Mora Build

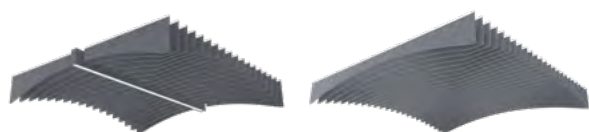
1. Determine the overall ceiling dimensions for the system.



2. Select your preferred design: Arch or Wave.

3. Select A or B style modules, or a combination of both.

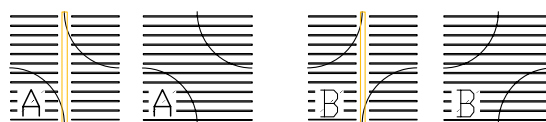
The sequence of the baffles is reversed for A and B styles, yielding a totally different visual effect.



ARCH



WAVE



4. Determine the lighting requirements to select the module sizes.

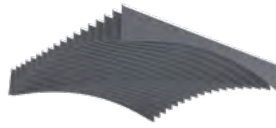
Use the chart to view available options for luminaire on-center spacing.

Example: For 12ft on-center spacing, 4x4 or 6x6 modules can be selected.

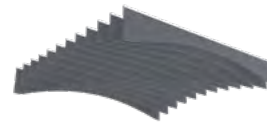
LIT AND UNLIT MODULE CONFIGURATIONS	MODULE SIZE				
	4x4	5x5	6x6	7x7	8x8
	On-center luminaire spacing				
	4ft	5ft	6ft	7ft	8ft
	8ft	10ft	12ft	14ft	16ft
	12ft	15ft	18ft		
	16ft				



5. Select the on-center spacing of the baffles based on acoustic and aesthetic needs.



4" on center

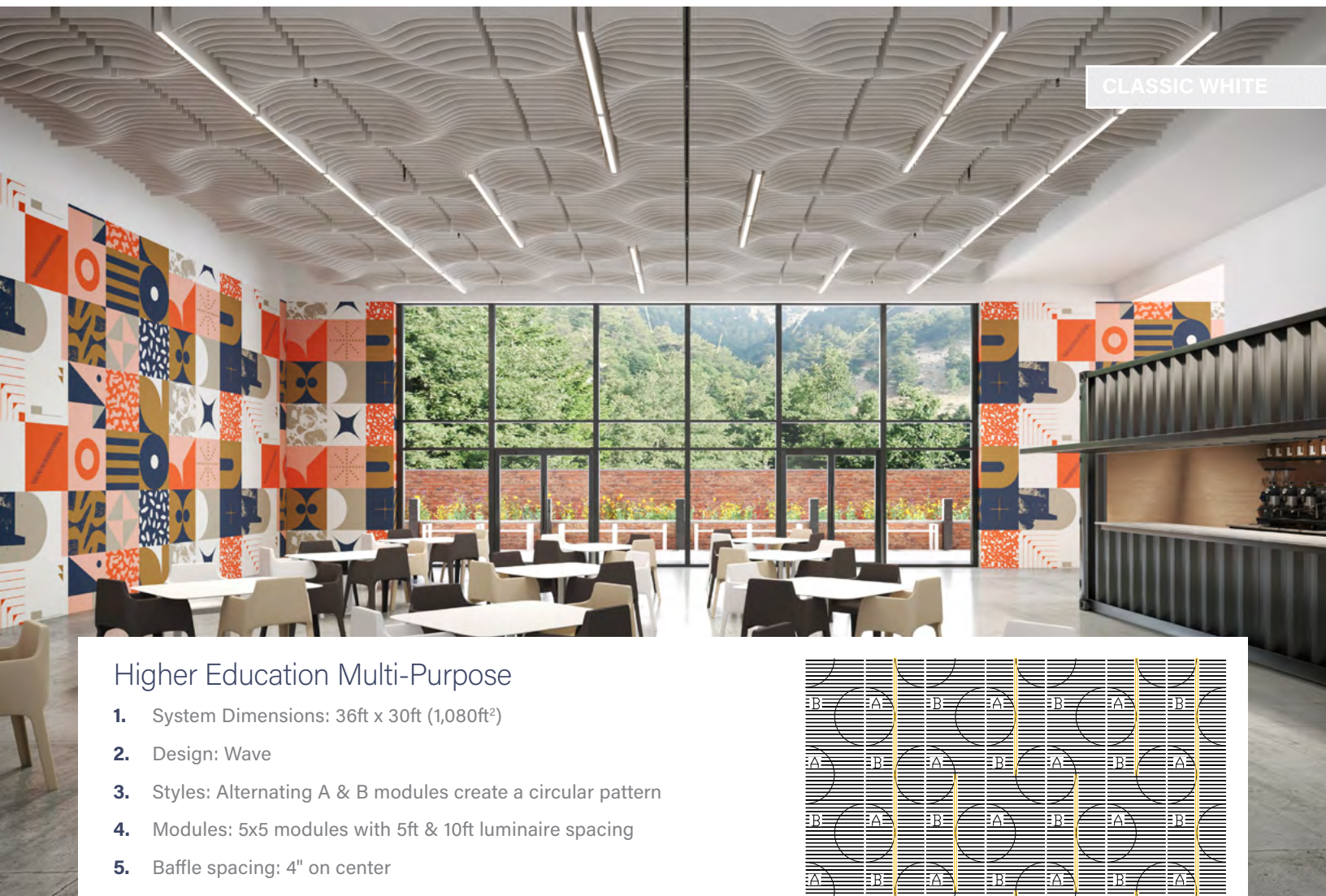


6" on center



12" on center

That's it, you've just built a ceiling array that will optimize lighting and sound levels!

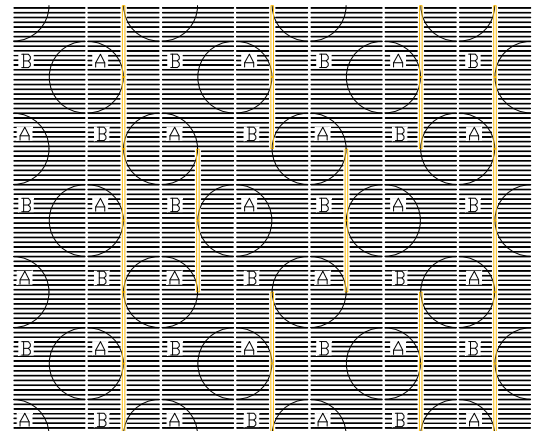


## Higher Education Multi-Purpose

1. System Dimensions: 36ft x 30ft (1,080ft<sup>2</sup>)
2. Design: Wave
3. Styles: Alternating A & B modules create a circular pattern
4. Modules: 5x5 modules with 5ft & 10ft luminaire spacing
5. Baffle spacing: 4" on center

### SYSTEM CONFIGURATION

42 total modules  
12 AMR-WVA-5x5-4OC, 9 AUMR-WVA-5x5-4OC  
12 AMR-WVB- 5x5-4OC, 9 AUMR-WVB-5x5-4OC







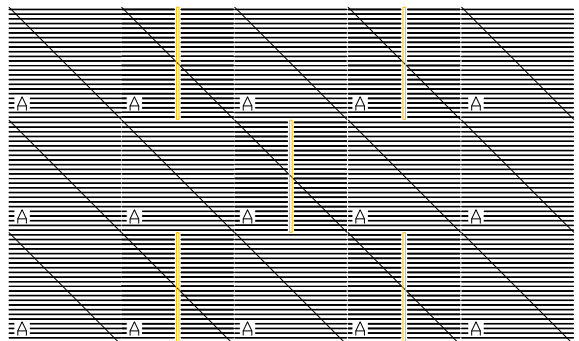
## Cafe

1. System Dimensions: 24ft x 40ft (960ft<sup>2</sup>)
2. Design: Arch
3. Style: All A
4. Modules: 8x8 modules with 8ft & 16ft luminaire spacing
5. Baffle spacing: 4" on center

### SYSTEM CONFIGURATION

15 total modules

5 AMR-AHA-8x8-4OC, 10 AUMR-AHA-8x8-4OC





LIMESTONE



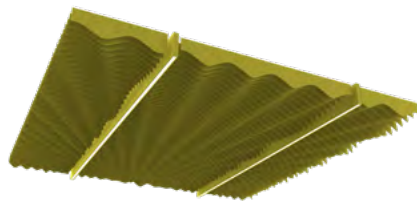


# How to specify Mora Create

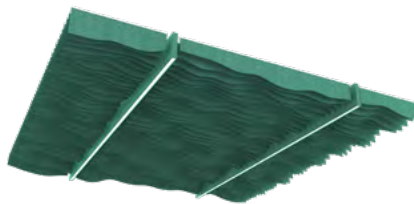
1. Determine the overall ceiling dimensions for the system.



2. Select your preferred design:



RADIATE

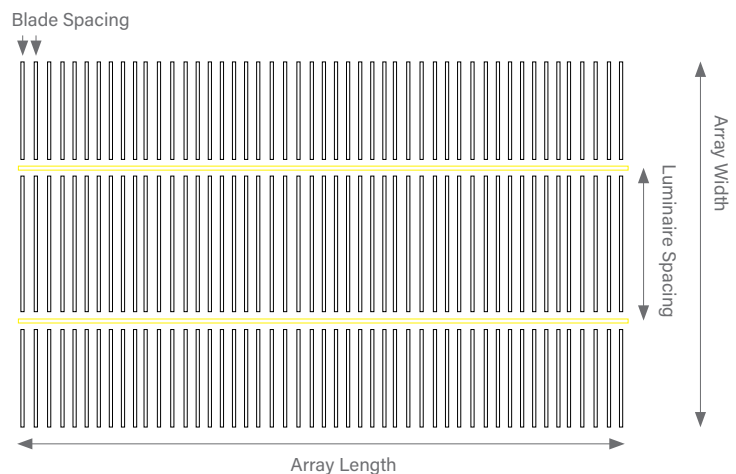


RIPPLE



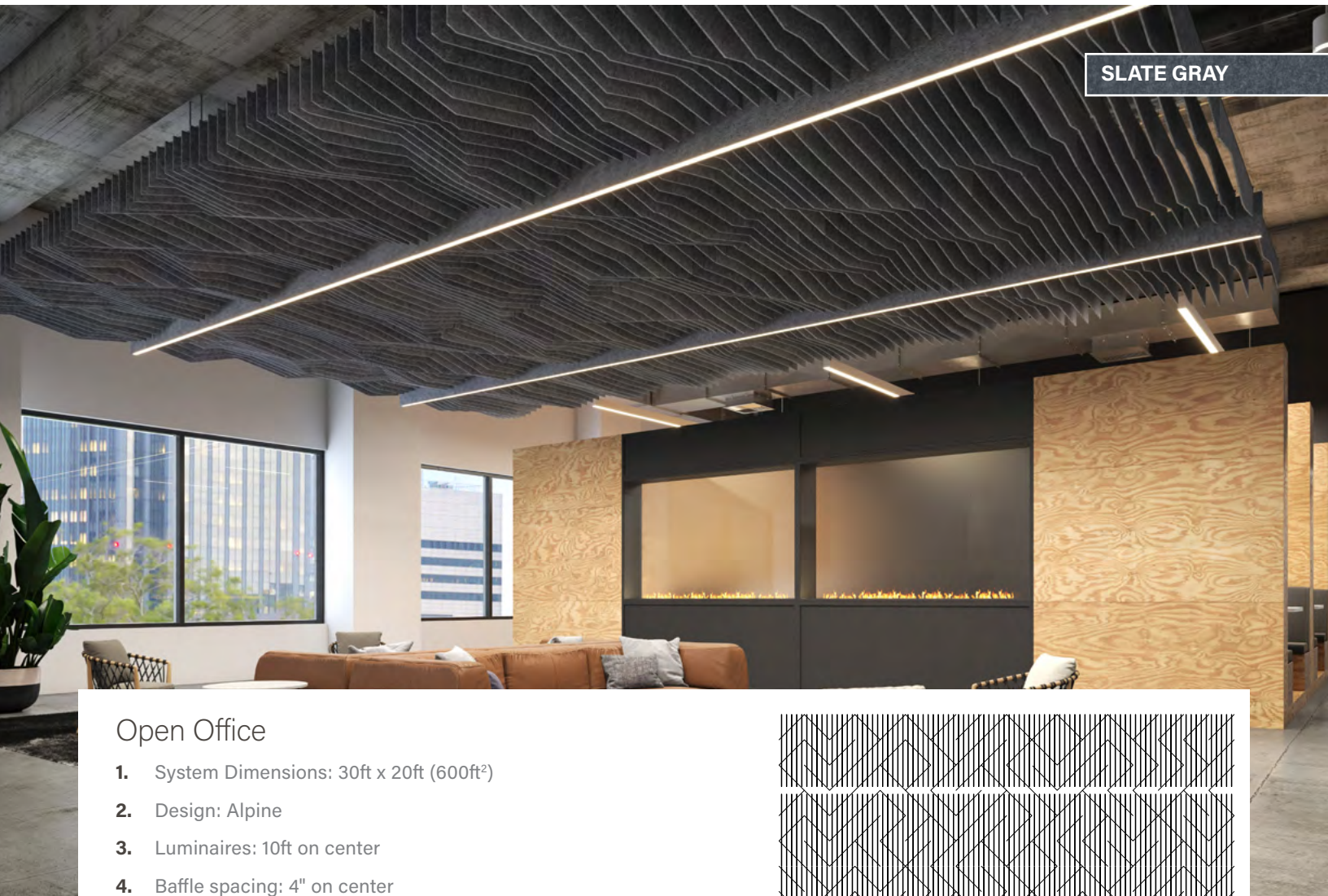
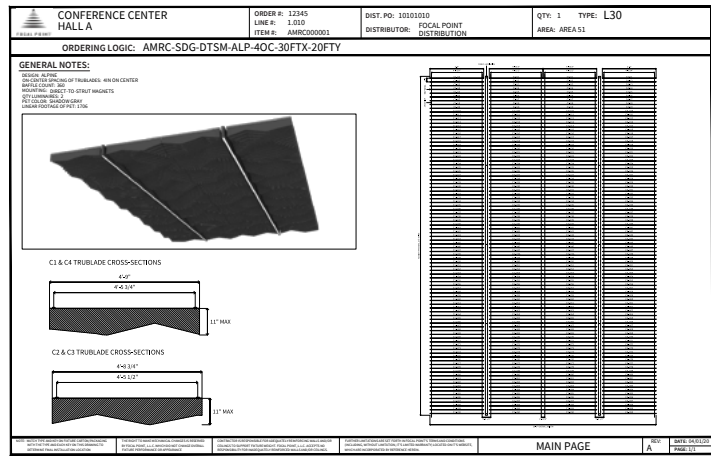
ALPINE

3. Determine the lighting requirements to specify the placement of the luminaires.
4. Select the on-center spacing of the baffles based on acoustic and aesthetic needs.
5. Send us the filled out form attached to the Mora Create cut sheet. That's where the dialog will start with our team.





We will provide plan and 3D views of each Mora Create system as we work through the details with you. Our consultative approach will ensure perfect control of the process from the initial discussion, through to design and engineering, to the delivery of an easy-to-install integrated ceiling system.

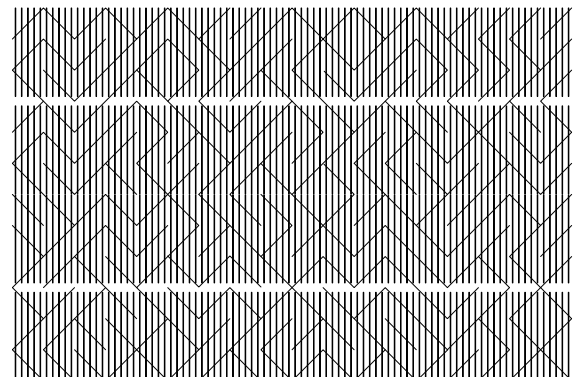


## Open Office

1. System Dimensions: 30ft x 20ft (600ft<sup>2</sup>)
2. Design: Alpine
3. Luminaires: 10ft on center
4. Baffle spacing: 4" on center

## SYSTEM CONFIGURATION

AMRC-ALP-30FTX-20FTY-4OC-PPD-10FTOC





SEAFOAM





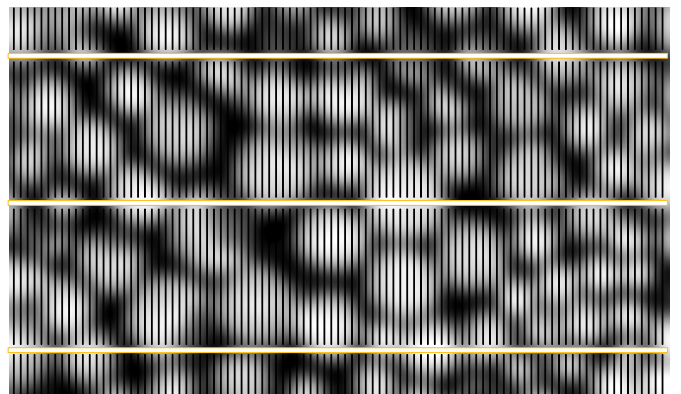


## Library

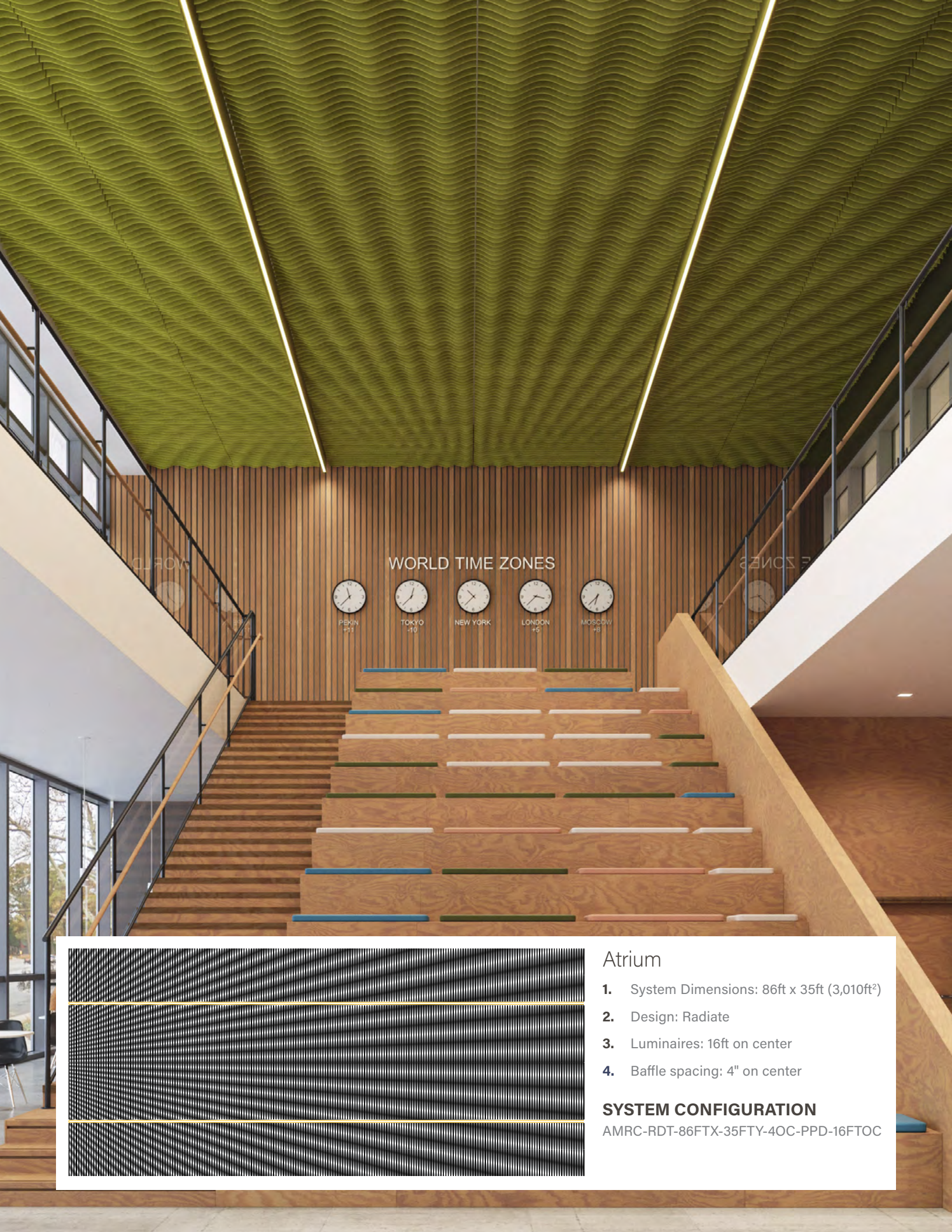
1. System Dimensions: 50ft x 22ft (1,100ft<sup>2</sup>)
2. Design: Ripple
3. Luminaires: 8ft on center
4. Baffle spacing: 6" on center

### SYSTEM CONFIGURATION

AMRC-RPL-50FTX-22FTY-6OC-PPD-8FTOC







## WORLD TIME ZONES



PEKIN  
+8



TOKYO  
+9



NEW YORK  
-5



LONDON  
+0



MOSCOW  
+3

## Atrium

1. System Dimensions: 86ft x 35ft (3,010ft<sup>2</sup>)
2. Design: Radiate
3. Luminaires: 16ft on center
4. Baffle spacing: 4" on center

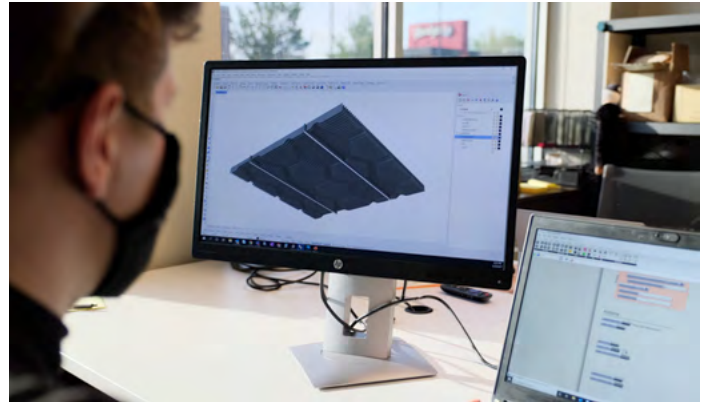
### SYSTEM CONFIGURATION

AMRC-RDT-86FTX-35FTY-4OC-PPD-16FTOC



# How to specify Mora Inspire

Looking for a real unique ceiling array?  
Contact our team at  
[acoustic.solutions@focalpointlights.com](mailto:acoustic.solutions@focalpointlights.com)  
to discuss your idea.



SILVER GRAY

## Airport Lounge

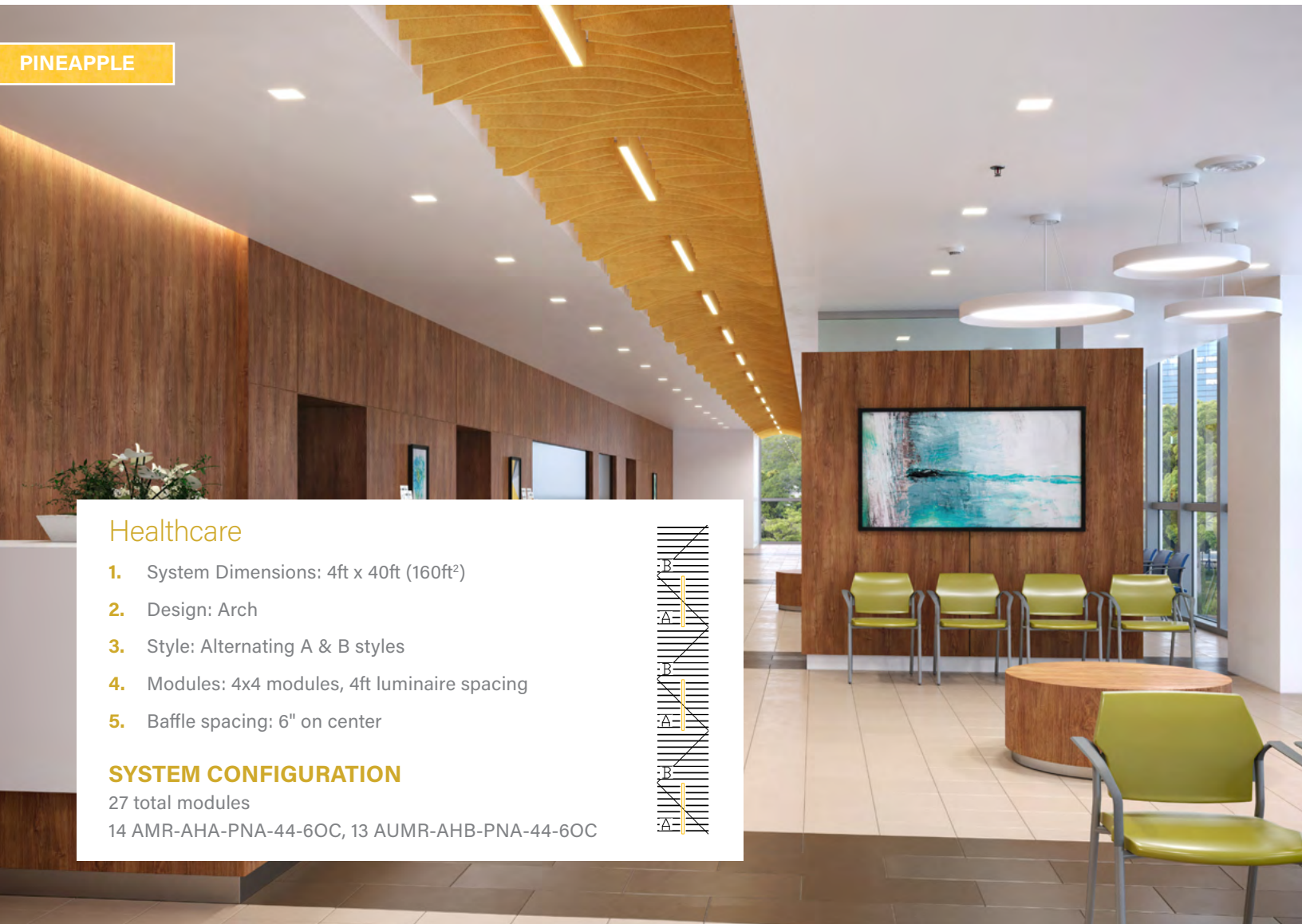
1. System Dimensions: 36ft x 30ft (1080ft<sup>2</sup>)
2. Design: Customer supplied, inspired by honeycomb
3. Luminaires: 10ft on center
5. Baffle spacing: 6ft on center

### SYSTEM CONFIGURATION

Custom



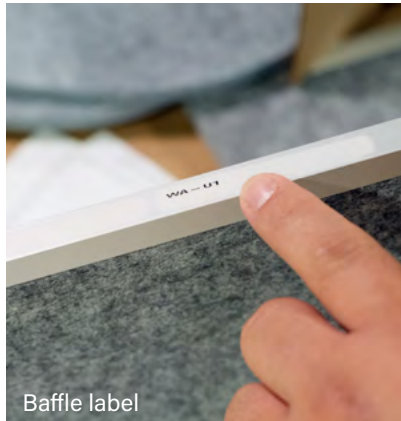




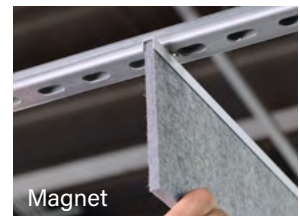


# Speed up installation

Each Mora array ships with clear installation instructions, a spacer tool, labeling of each baffle, and packaging according to the installation sequence. This is to help facilitate the work of the installer, reduce the risk for errors, and minimize labor costs. Clips or magnets make installation a breeze; cable suspension is also available.



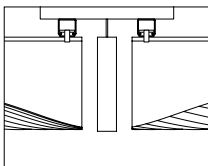
Baffle label



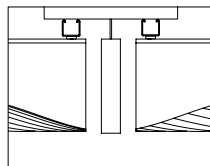
Magnet

## MOUNTING OPTIONS

- Direct-to-strut luminaire with StrutKlip or magnet blade mounting

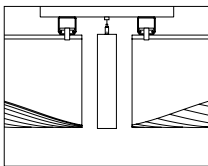


StrutKlip

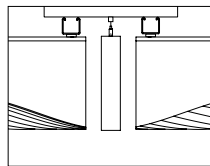


Magnet

- Suspended luminaire with StrutKlip or magnet blade mounting

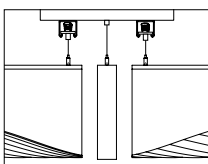


StrutKlip



Magnet

- Suspended luminaire and baffles



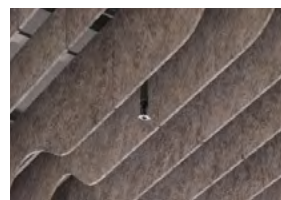
Cable

## SPACER TOOL



One spacer tool allows for 4", 6" or 12" spacing.

## SPRINKLER INTEGRATION

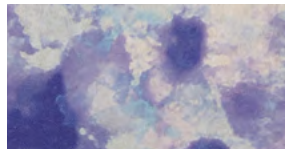


All installations must comply with International Building Code (IBC) sections 903.2.1 through 903.2.12 and your local fire codes.



# PET Colors

## COSMIC (25% SCALE)



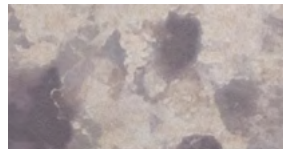
BLUE STAR

BSR



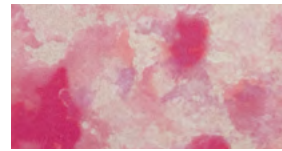
GREEN QUASAR

GQR



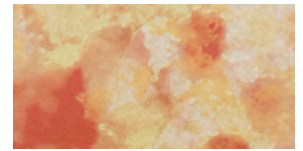
MOON ROCK

MRK



PINK NEBULA

PPN



SOLAR FLARE

SRF

## THE NATURALS (25% SCALE)



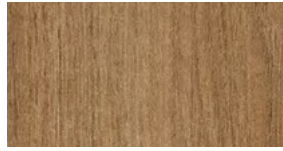
LIGHT OAK

LOK



GRAY ELM

GRE



CHESTNUT

CHT



WALNUT

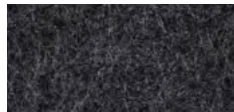
WLT

## STANDARD PET



PURE BLACK

PBK



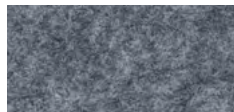
CHARCOAL GRAY

CHG



SLATE

SLT



SHADOW GRAY

SDG



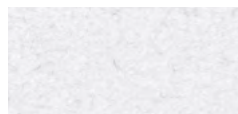
SILVER GRAY

SLG



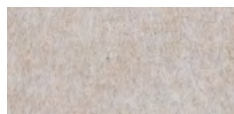
PEARL ICE

PIC



CLASSIC WHITE

CWH



NATURAL LINEN

NTL



HAZELWOOD

HZW

Slight color variations are inherent to the PET felt manufacturing process. Color renditions on screens vary due to display settings and lighting conditions.

Order samples at [focalpointlights.com/Samples](https://focalpointlights.com/Samples)

## PREMIUM PET



CORNFLOWER BLUE

CFB



DENIM BLUE

DNB



MIDNIGHT BLUE

MNB



DEEP PURPLE

DPP



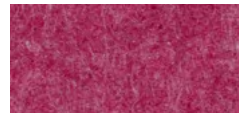
BRICK RED

BRD



CHERRY RED

CHR



BERRY

BRY



BLUSH

BLS



CARROT

CRT



PINEAPPLE

PNA



DEEP WATER

DWT



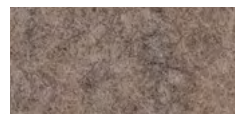
SEAFOAM

SFM



EMERALD GREEN

EMG



LIMESTONE

LMS



For more information on how to specify acoustic systems, or for general inquiries regarding the Focal Point Acoustic Solutions offering, please email **acoustic.solutions@focalpointlights.com** or contact your Focal Point representative.



**FOCAL POINT®**

Bringing It All To Light®



## Front cover:

Mora Create Radiate, 86ft x 35ft (3010ft²),  
4" on-center blade spacing,  
16ft on-center luminaire spacing,  
Lime Green (Discontinued)

## Page 1:

Mora Build Wave, 18ft x 18ft (324ft²),  
B style, 6x6 modules,  
6" on-center blade spacing,  
Blush