

id+ 2.5" round housing

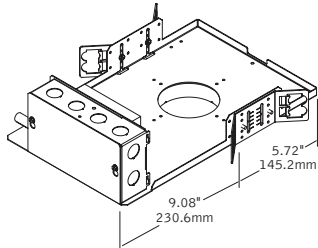
FLS2



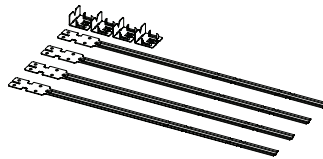
FOCAL POINT®

! LUMINAIRE MUST BE INSTALLED PRIOR TO DRYWALL CEILING. ALL GRID LUMINAIRES MUST BE SECURED TO STRUCTURE ABOVE. !

NON-EMERGENCY - THERMALLY PROTECTED, NON-IC



! BAR HANGERS
NON-IC - SOLD SEPARATELY
IC - INCLUDED



KEY



POWER OFF



POWER ON



LEVEL

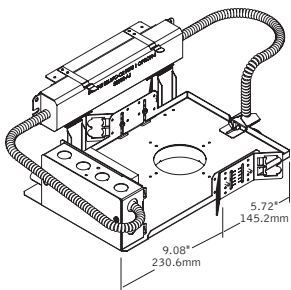


ATTENTION

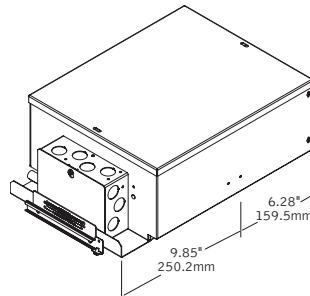


SEE ADDITIONAL INSTRUCTIONS

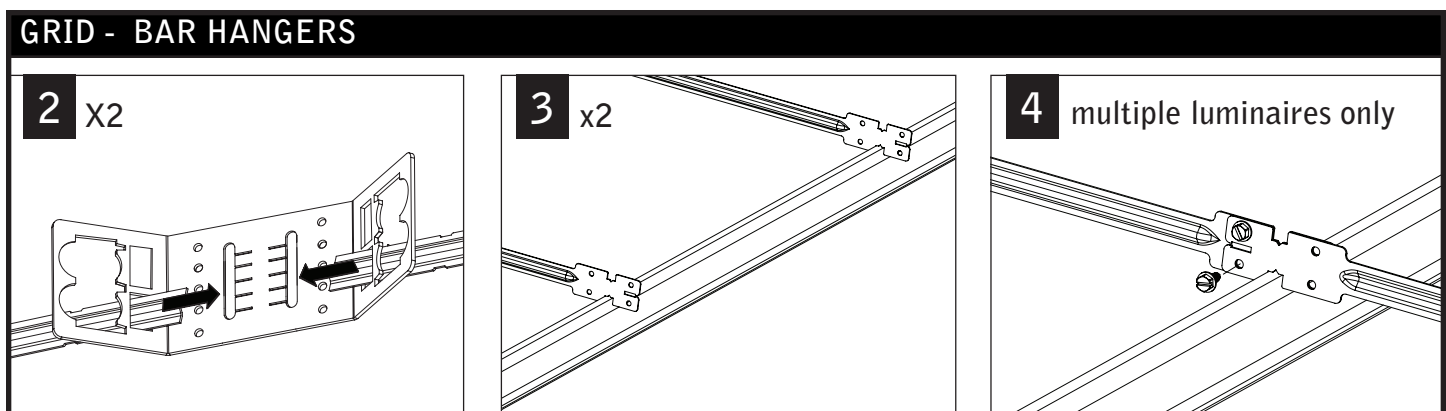
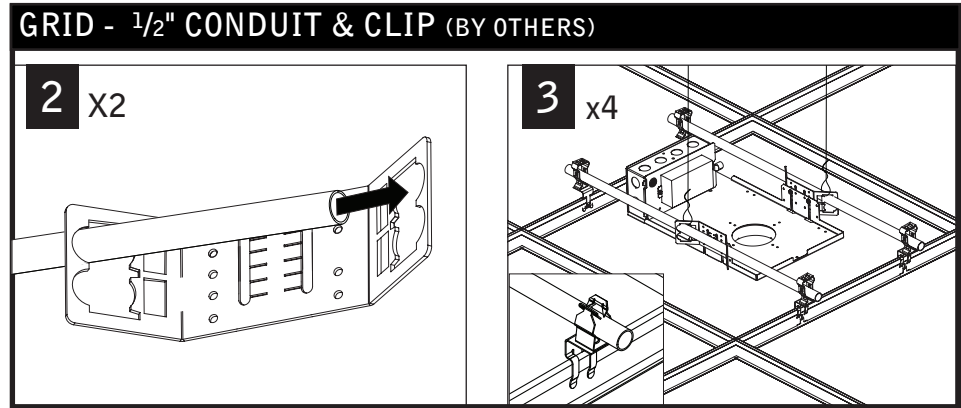
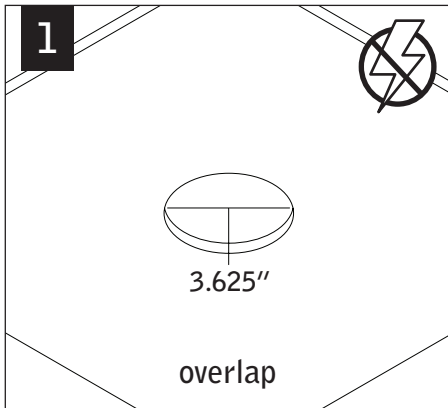
EMERGENCY - REMOTE TEST SWITCH, NON-IC



NON-EMERGENCY - IC RATED

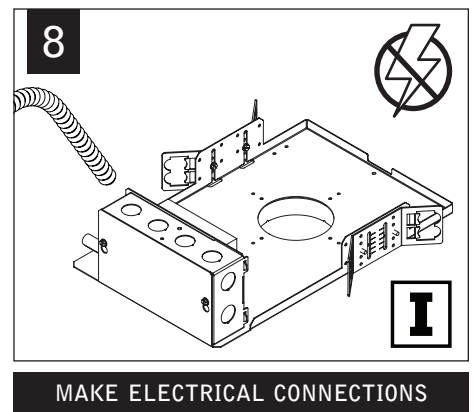
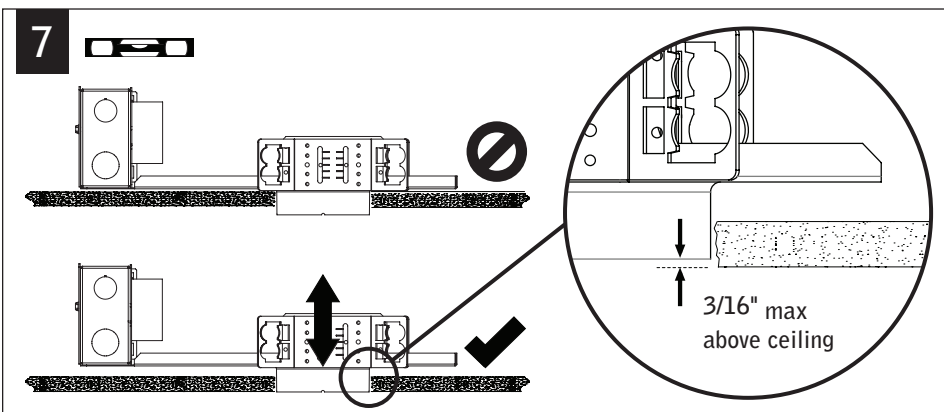
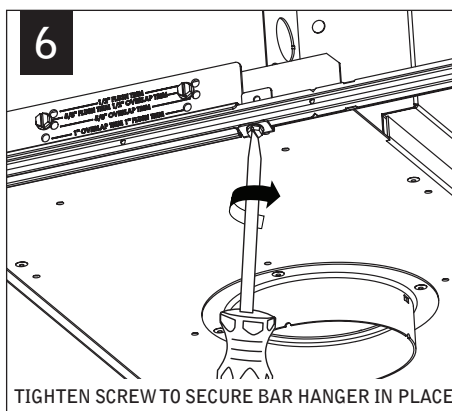
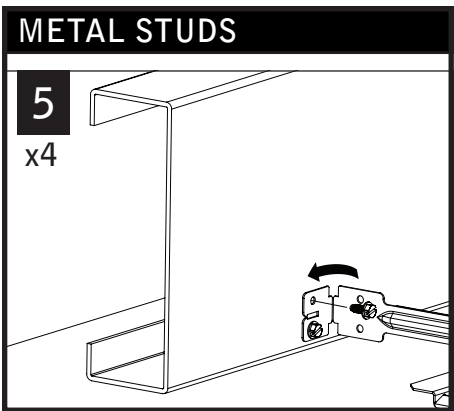
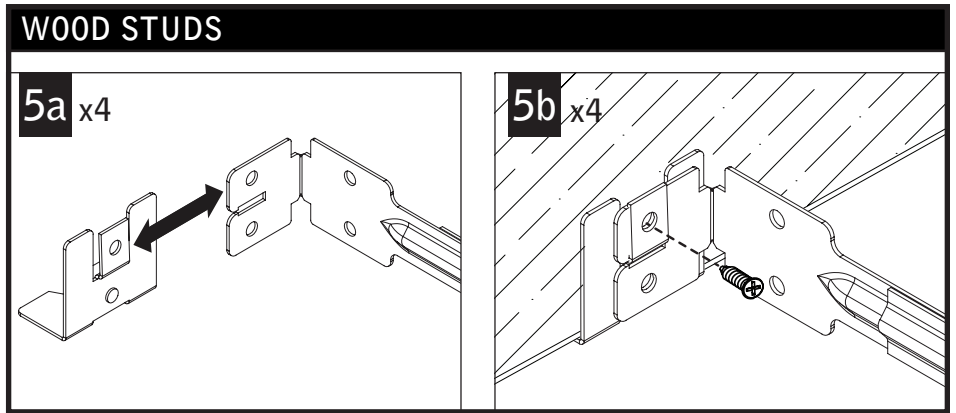
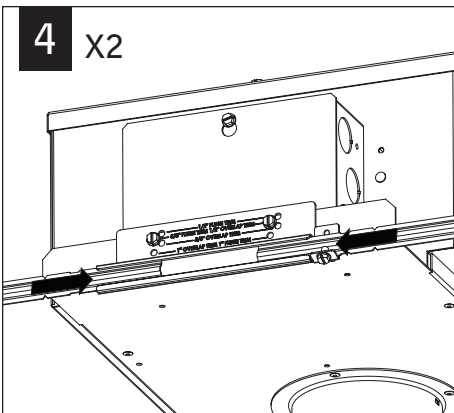
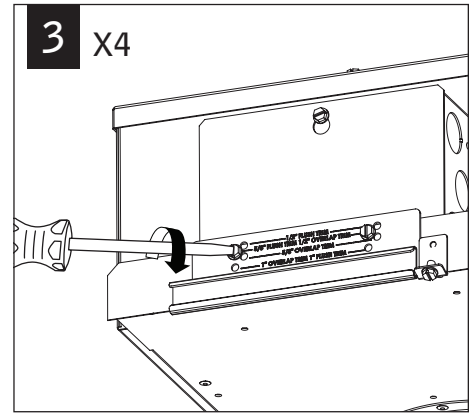
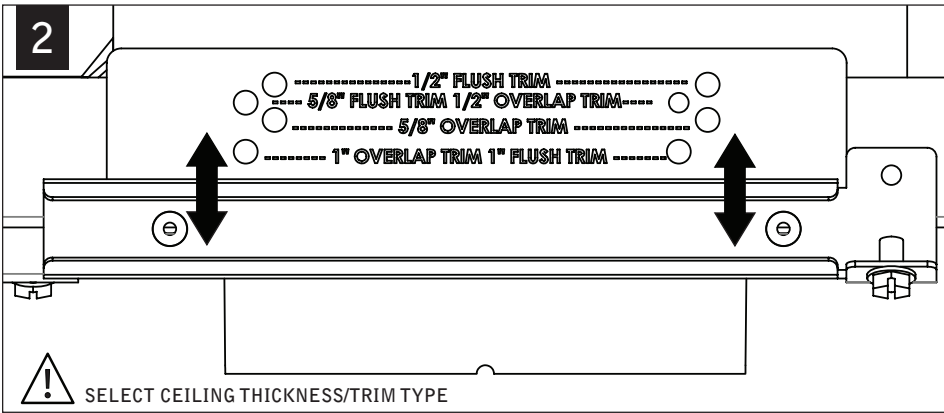


FOR ASTM E-283 AIR-TIGHT COMPLIANCE, SEAL IC HOUSING/RO TRIM WITH SILICONE CAULKING BETWEEN THE EDGE OF THE COLLAR AND CEILING MATERIAL. SEAL ALL ADDITIONAL HOLES IN HOUSING WITH ALUMINUM TAPE.



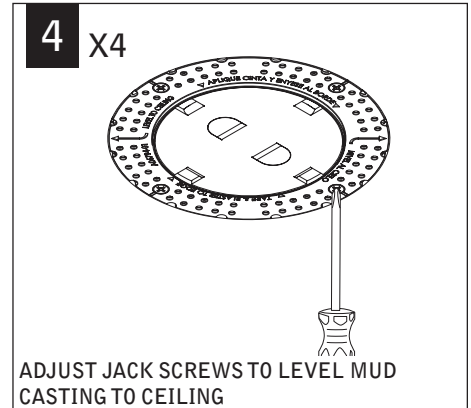
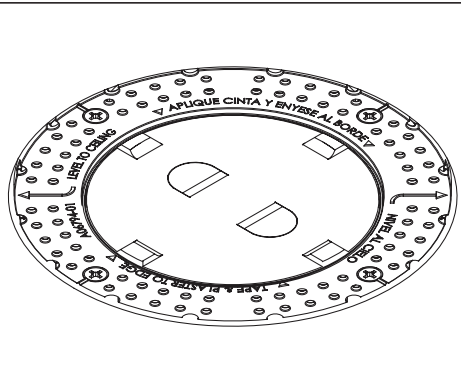
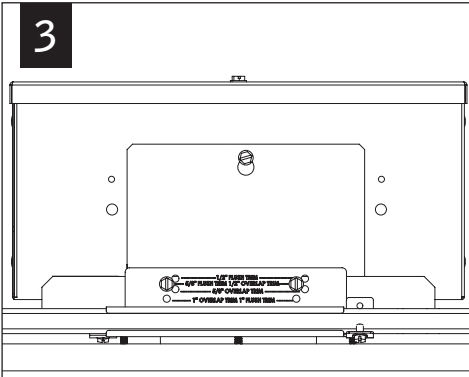
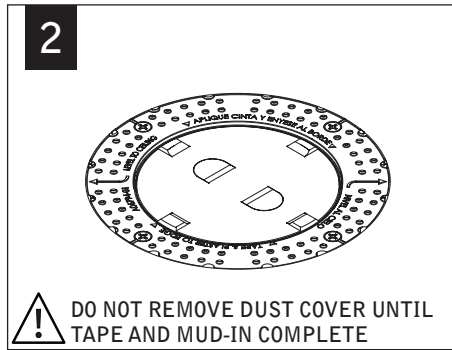
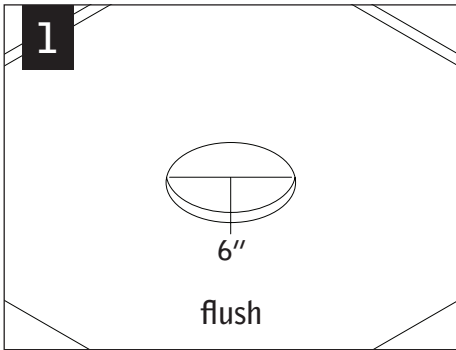
Luminaires must be installed by a qualified electrician (check with local and national codes for proper installation). To prevent electrical shock, disconnect electrical supply before installation or servicing.

DRYWALL - BAR HANGERS



Fixtures must be installed by a qualified electrician (check with local and national codes for proper installation).
 To prevent electrical shock, disconnect electrical supply before installation or servicing.

FLUSH TRIM MUD-IN



MUD CASTING WILL BE SLIGHTLY RECESSED WHEN BAR HANGERS ARE PROPERLY POSITIONED.

EMERGENCY - MOUNTING HEIGHT



SEE BATTERY MANUFACTURER INSTRUCTIONS

EMERGENCY MAXIMUM MOUNTING HEIGHT:

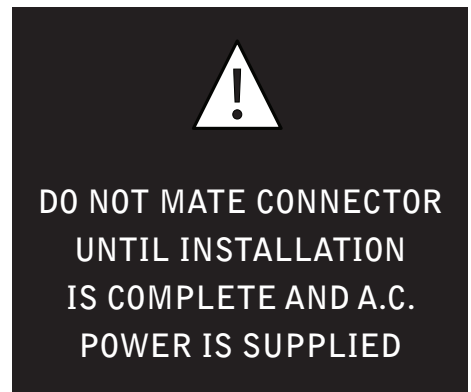
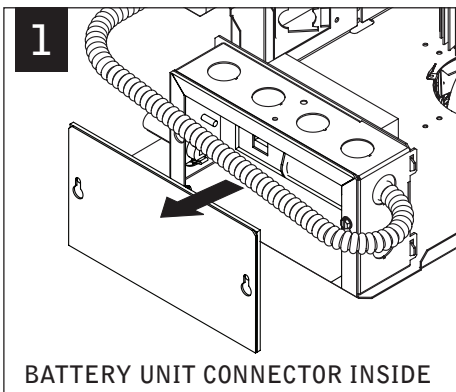
AA-WFL-BK-BK: 45.00'

DN-WFL-BK-BK: 19.00'

WW-WFL-BK-BK: 10.00'

EMERGENCY - INTEGRAL TEST SWITCH

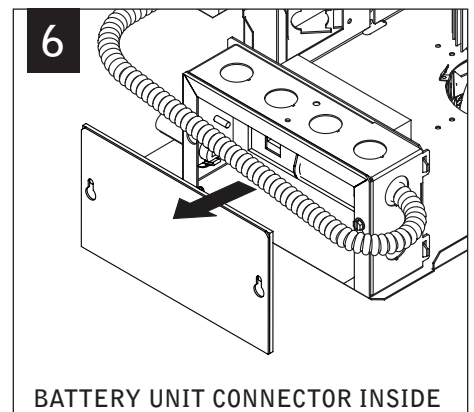
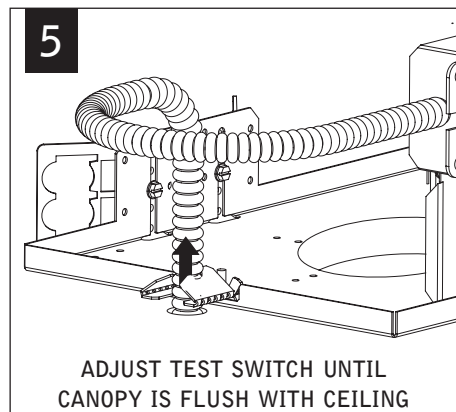
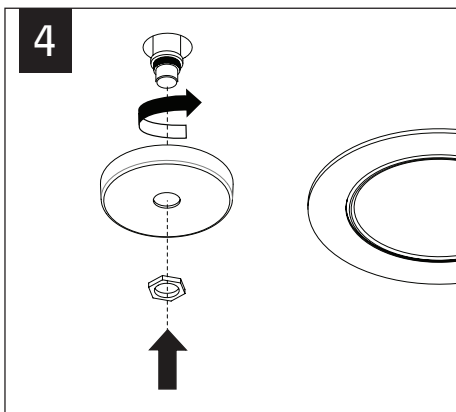
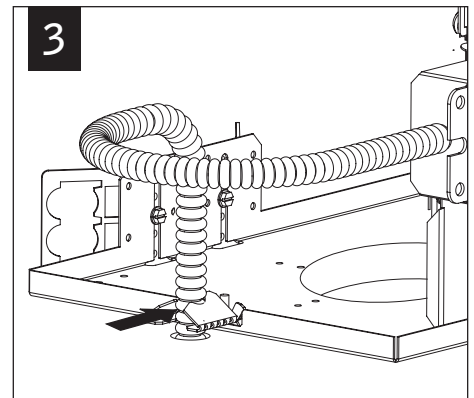
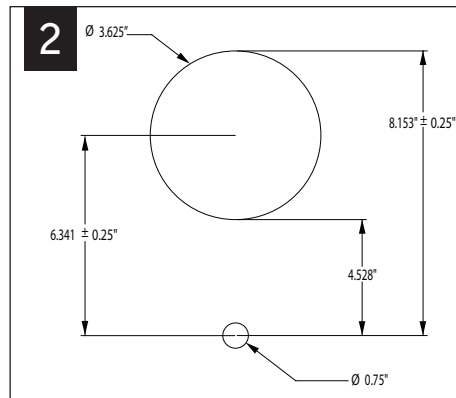
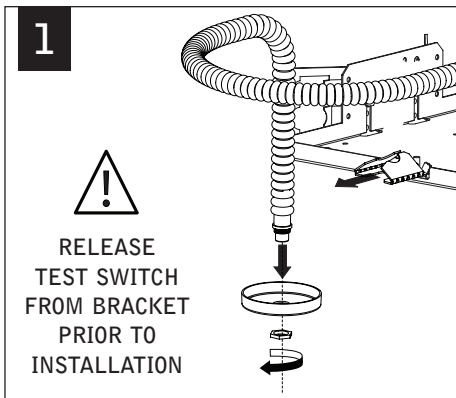
! ABOVE CEILING ACCESS REQUIRED !



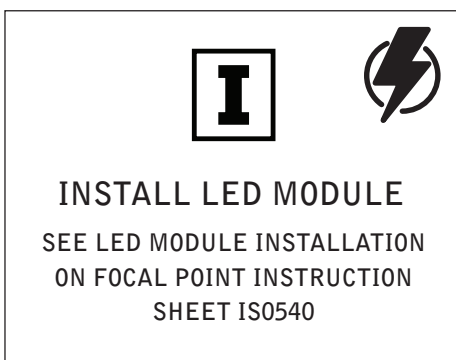
Fixtures must be installed by a qualified electrician (check with local and national codes for proper installation).
To prevent electrical shock, disconnect electrical supply before installation or servicing.

EMERGENCY - REMOTE TEST SWITCH

⚠ ABOVE CEILING ACCESS REQUIRED ⚠



LED MODULE AND TRIM INSTALLATION



Fixtures must be installed by a qualified electrician (check with local and national codes for proper installation).
To prevent electrical shock, disconnect electrical supply before installation or servicing.

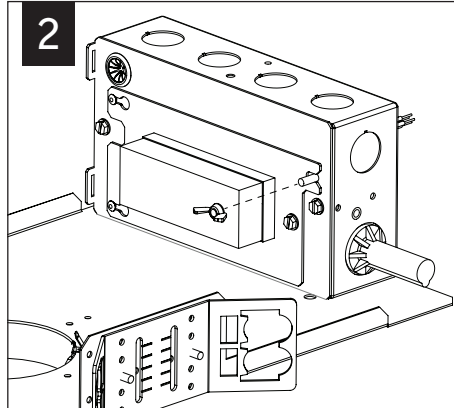
DRIVER SERVICE

1

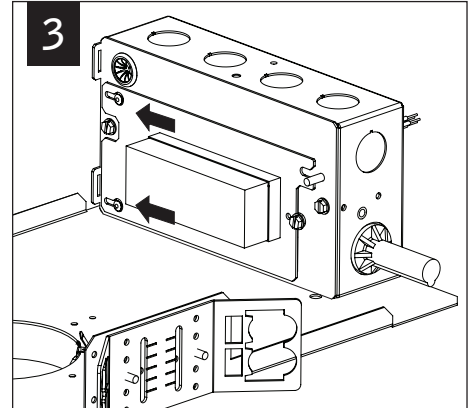


REMOVE LED MODULE
SEE LED MODULE REMOVAL ON
FOCAL POINT INSTRUCTION
SHEET IS0540

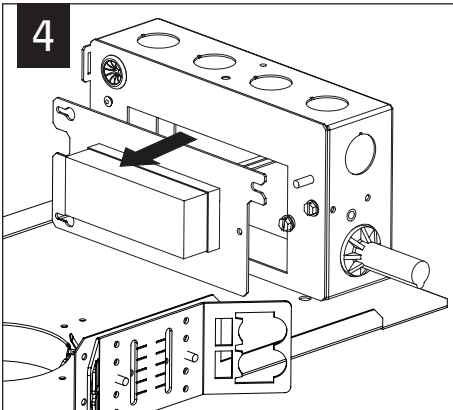
2



3



4



Contractor is responsible for adequately reinforcing walls and/or ceilings to support fixture weight. Focal Point, LLC accepts no responsibility for inadequately reinforced walls and/or ceilings. The information contained in this drawing is the sole property of Focal Point, LLC. Any reproduction in part or whole without the written permission of Focal Point, LLC is prohibited.