

Seem® 4

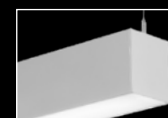
LED WALL TO CEILING CORNER



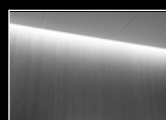
recessed
companion



wall mount
companion



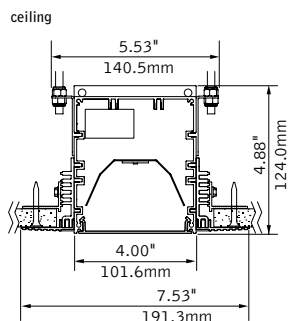
suspended
companion



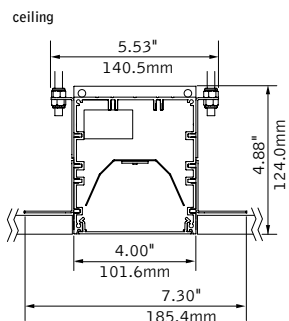
perimeter
companion

DIMENSIONAL DATA

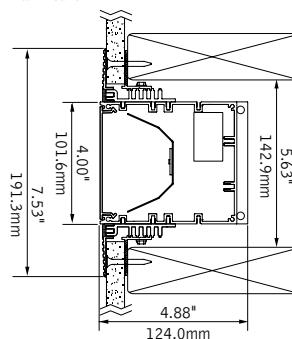
trimless mud-in



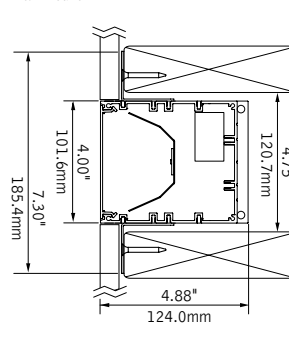
hard surface



wall mount



wall mount



notes: designed for 2"x6" construction
0.375"min - 2.125"max material thickness

FEATURES

Narrow extruded aluminum 4" aperture recessed slot LED that transitions from wall to ceiling.

Clean and minimal trimless drywall mounting.

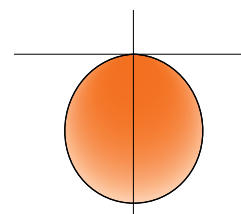
Frosted acrylic lens provides uninterrupted illumination, without pixels or shadows.

LED position and lens material optimized to provide the perfect blend of high performance and visual comfort.

Choice of output levels to meet a wide variety of application needs.

Tunable White: Supports human activity, well-being, and preferences with a light quality that evolves throughout the day.

PERFORMANCE

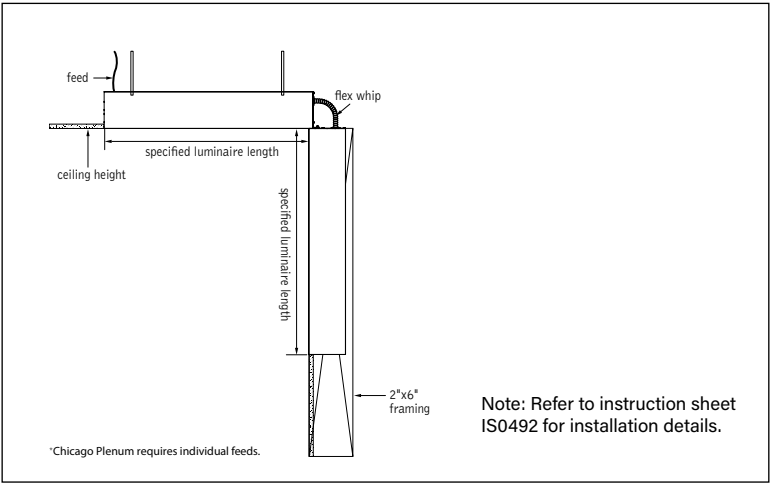


Flush Lens

Photometric performance is measured in accordance with IESNA LM-79.
Visit focalpointlights.com for complete photometric data.

fixture: project:

DETAILS



SPECIFICATIONS

LED System

Proprietary linear LED module incorporates premium LEDs on a robust platform to achieve excellent thermal management. LEDs are placed to promote a uniform appearance. Available in 2700K, 3000K, 3500K or 4000K with CRI>80 or CRI>90, 3 SDCM or Tunable White (2700K-6500K), CRI>80, >90. LED modules and drivers are replaceable from below.

Construction

One piece extruded aluminum housing, 20 Ga. steel end caps. Housing for new construction applications. XFW acceptable for use with wood, consult factory for Type IC availability. 2' unit weight: 18 lbs., 3' unit weight: 24 lbs., 4' unit weight: 30 lbs., 5' unit weight: 36 lbs.

Optic

Reflectors fabricated of 22 Ga. steel finished in High Reflectance White powder coat. Extruded acrylic lens .085" thick with satin finish, up to 8' continuous.

Electrical

Luminaires are pre-wired with factory installed branch circuit wiring and over-molded quick connects. Standard 120-277V constant current driver includes 0-10V analog dimming. Dimming range 100% to 10%.Power factor > .9.

Emergency

Output - 10 watts for 90 minutes. Maximum mounting height: 19.2ft. See EM/EC Guide for default locations and ordering details.

Labels

UL and cUL listed. Suitable for Dry or Damp Locations, indoor use only.

Finish

Polyester powder coat applied over a multi-stage pre-treatment.

Lumen Maintenance

Reported: L70 > 61,000 hours Calculated: L70 at > 480,000 hours
L90 > 61,000 hours L90 at > 128,000 hours
(Derived from EPA TM-21 calculator. Based on typical conditions, consult factory for additional data.)

Reliability

At Focal Point, our products are designed to stand the test of time. Each luminaire is engineered using superior components, manufactured with the utmost care and rigorously tested. Contact us for reliability data.

Warranty

LED system rated for operation in ambient environments up to 25°C. 5-year limited warranty.

4' PERFORMANCE CHART

| Shielding | Lumen Output | Nominal Lumens | Tested System Watts | LPW |
|------------|--------------|----------------|---------------------|-----|
| Flush Lens | 275LF | 1100 | 9.1 | 121 |
| | 375LF | 1500 | 11.7 | 129 |
| | 625LF | 2500 | 19.9 | 126 |
| | 875LF | 3500 | 27.9 | 125 |
| | 1000LF | 4000 | 32.2 | 124 |
| | 1125LF | 4500 | 36.6 | 123 |
| | 1250LF | 5000 | 41.2 | 121 |

Based on 3500K, 80 CRI, 4' lengths. Lumen multiplier: 90+ CRI = 0.87. Lumen output may vary +/- 5%. Actual wattage may vary +/- 5%

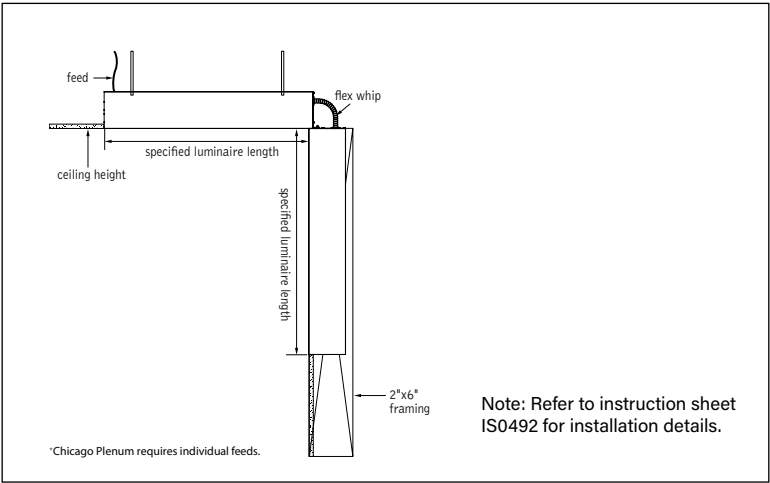
Focal Point LLC reserves the right to change specifications for product improvement without notification.

| STANDARD WHITE | | |
|---|--------------------|-------|
| Luminaire Series | | FSM4L |
| Seem 4 LED | FSM4L | |
| Shielding | | FL |
| Flush Satin Lens | FL | |
| Lumen Output | | |
| 275 Lumens per foot <small>(Not available with Lutron Drivers)</small> | 275LF | |
| 375 Lumens per foot <small>(Not available with LH1.)</small> | 375LF | |
| 625 Lumens per foot <small>(3' minimum with LH1.)</small> | 625LF | |
| 875 Lumens per foot | 875LF | |
| 1000 Lumens per foot | 1000LF | |
| 1125 Lumens per foot | 1125LF | |
| 1250 Lumens per foot | 1250LF | |
| Color Temperature | | |
| 2700K, 80+ CRI or 90+ CRI | 27K or 927K | |
| 3000K, 80+ CRI or 90+ CRI | 30K or 930K | |
| 3500K, 80+ CRI or 90+ CRI | 35K or 935K | |
| 4000K, 80+ CRI or 90+ CRI | 40K or 940K | |
| Circuit | | 1C |
| Single Circuit | 1C | |
| Voltage | | UNV |
| UNV 120/277 Volt | UNV | |
| Control System & Dimming Level | | |
| 0-10V - 10% Dimming | LD1 | |
| 0-10V - 1% Dimming | L11 | |
| Lutron Hi-Lume EcoSystem (LDE1) | | |
| - 1% Dimming | LH1 | |
| DALI - 1% Dimming <small>(1000LF max.)</small> | D11 | |
| Mounting | | |
| Wall to Ceiling Corner, pre-set for 1/2" Drywall | CXF1 | |
| Wall to Ceiling Corner, pre-set for 5/8" Drywall | CXF2 | |
| Wall to Ceiling Corner, set drywall thickness in field <small>(Mounting equipment assembled in field)</small> | CXFF | |
| Wall to Ceiling Corner, non-drywall hard surface | CXFN | |
| Wall to Ceiling Corner, wood | CXFW | |
| Factory Options | | |
| Chicago Plenum | CP | |
| Emergency Circuit | _EC | |
| Emergency Battery Pack | _EM | |
| <small>(4' minimum. See EM/EC Guide for default locations and ordering details.)</small> | | |
| 6' New York City Flex Whip (120V) | FNY1 | |
| 6' New York City Flex Whip (277V) | FNY2 | |
| 6' Flex Whip | FW | |
| Finish | | WH |
| Matte White Housing | WH | |
| Luminaire Length | | |
| <small>(Lengths are nominal)</small> | | |
| Specify luminaire/row length in 1' increments | X'CX'W | |
| <small>Example: 12C6W= 12' in ceiling, 6' in wall</small> | | |

fixture:

project:

DETAILS



TW 4' PERFORMANCE CHART

| Shielding | Lumen Output | Nominal Lumens | Tested System Watts | LPW |
|------------|--------------|----------------|---------------------|-----|
| Flush Lens | 275LF | 1100 | 10.8 | 102 |
| | 375LF | 1500 | 14.5 | 104 |
| | 625LF | 2500 | 24.9 | 100 |
| | 875LF | 3500 | 35.9 | 97 |
| | 1000LF | 4000 | 41.2 | 97 |
| | 1125LF | 4500 | 46.9 | 96 |

Based on 2700K, 90CRI, 4' lengths. Lumen output may vary +/- 5%. Actual wattage may vary +/- 5%.

Lumen Multipliers

| CRI | Multiplier |
|-----|------------|
| 80+ | 1.16 |
| 90+ | 1.00 |

Wattage Multipliers

| CCT | Multiplier |
|-------|------------|
| 2700K | 1.00 |
| 3000K | 0.96 |
| 3500K | 0.92 |
| 4000K | 0.89 |
| 5000K | 0.88 |
| 5700K | 0.87 |



TUNABLE WHITE

| | |
|--|--------------|
| Luminaire Series | FSM4L |
| Seem 4 LED | |
| Shielding | FL |
| Flush Satin Lens | |
| Lumen Output | |
| 275 Lumens per foot (3' min. with D1TW) | 275LF |
| 375 Lumens per foot | 375LF |
| 625 Lumens per foot | 625LF |
| 875 Lumens per foot | 875LF |
| 1000 Lumens per foot | 1000LF |
| 1125 Lumens per foot | 1125LF |
| Color Temperature | |
| Tunable White: 2700-6500K, 80+ CRI | 2765T |
| Tunable White: 2700-6500K, 90+ CRI | 92765T |
| Circuit | 1C |
| Single Circuit | 1C |
| Voltage | UNV |
| UNV 120/277 Volt | UNV |
| Control System & Dimming Level | D1TW |
| DALI - 1% Dimming | D1TW |
| (Default driver offers DT6 control. It requires two addresses, one for intensity & one for CCT tuning. Consult factory for DT8. Extended lead time applies.) | |
| Mounting | |
| Wall to Ceiling Corner, pre-set for 1/2" Drywall | CXF1 |
| Wall to Ceiling Corner, pre-set for 5/8" Drywall | CXF2 |
| Wall to Ceiling Corner, set drywall thickness in field | CXFF |
| (Mounting equipment assembled in field) | |
| Wall to Ceiling Corner, non-drywall hard surface | CXFN |
| Wall to Ceiling Corner, wood | CXFW |
| Factory Options | |
| Chicago Plenum | CP |
| Emergency Circuit | _EC |
| Emergency Battery Pack | _EM |
| (Consult factory) | |
| 6' New York City Flex Whip (120V) | FN1Y |
| 6' New York City Flex Whip (277V) | FN2Y |
| 6' Flex Whip | FW |
| Finish | WH |
| Matte White Housing | WH |
| Luminaire Length | |
| (Lengths are nominal) | |
| Specify luminaire/row length in 1' increments | X'CX'W |
| Example: 12C6W= 12' in ceiling, 6' in wall | |