

seem 4™ asymmetric led trim flange

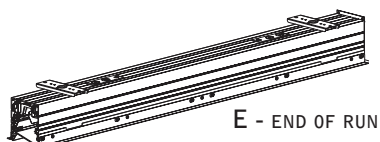
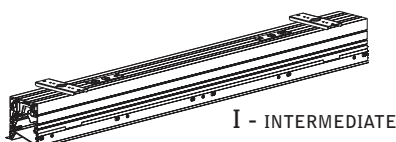
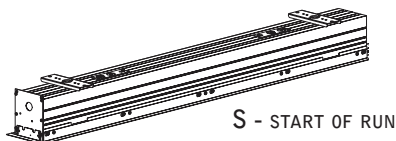
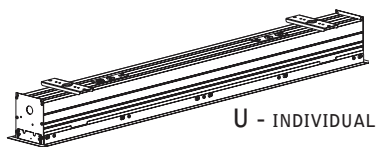
FSM4AL-TF



NEW CONSTRUCTION ONLY

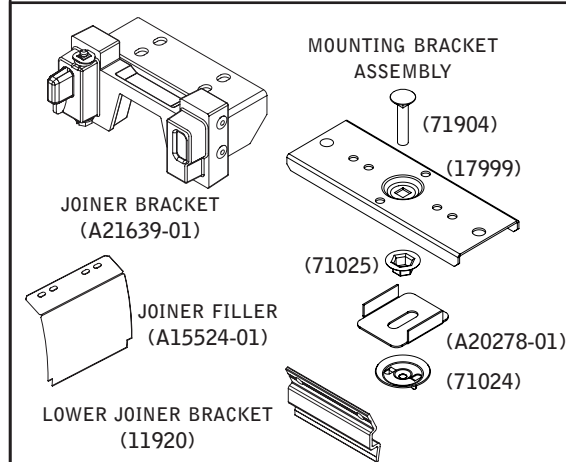
⚠ CONFIGURATIONS ARE RUN SPECIFIC, PLEASE CONSULT FACTORY DRAWINGS BEFORE BEGINNING INSTALLATION. ⚠

FOCAL POINT



PARTS LISTS

PARTS SHIPPED INSTALLED



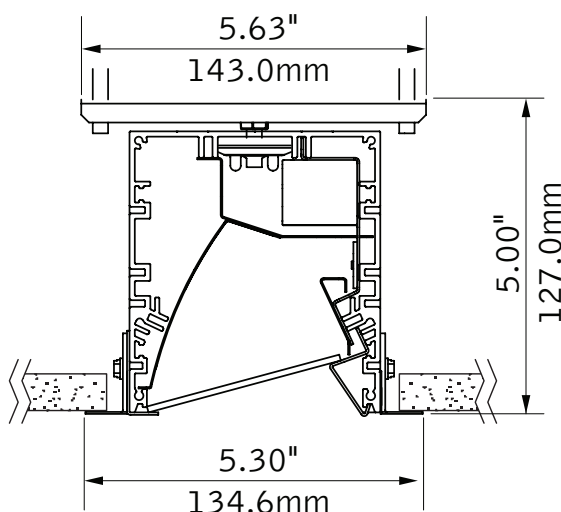
SHIELDING SHIPPED LOOSE

FROSTED LENS

KEY

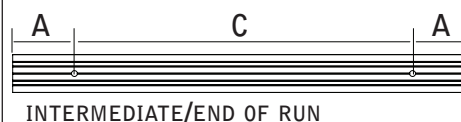
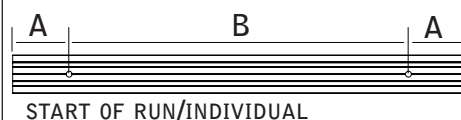


MOUNTING BRACKET MUST BE INSTALLED PRIOR TO DRYWALL



MOUNTING BRACKET MUST BE SECURED TO STRUCTURE ABOVE.
1/4" - 20 CARRIAGE BOLT MAY BE SUPPLIED BY OTHERS FOR GREATER ADJUSTABILITY.

MOUNTING LOCATIONS

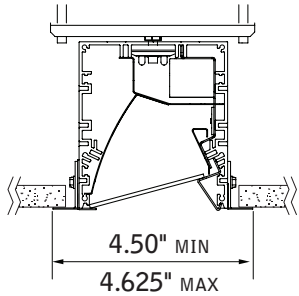


| housing length | A | B | C |
|----------------|------|-----|-----|
| 2' | 1" | 21" | 22" |
| 3' | 1" | 33" | 34" |
| 4' | 5.5" | 36" | 37" |
| 5' | 5.5" | 48" | 49" |
| 6' | 5.5" | 60" | 61" |
| 7' | 5.5" | 72" | 73" |
| 8' | 5.5" | 84" | 85" |

MOUNTING LOCATION CHART IS AN APPROXIMATE GUIDE ONLY.

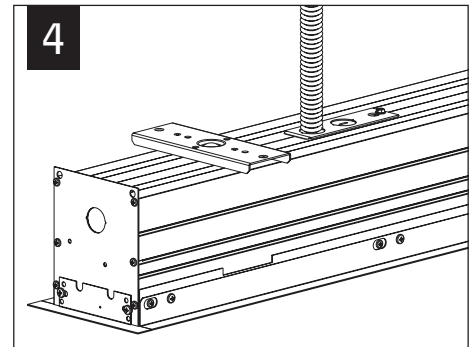
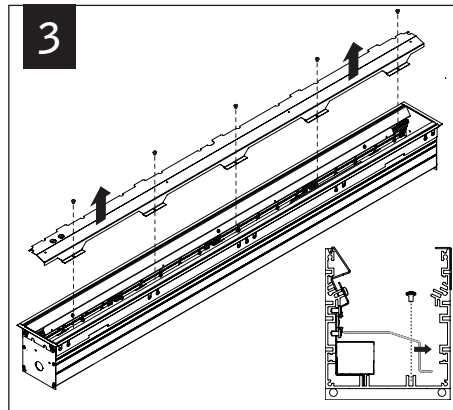
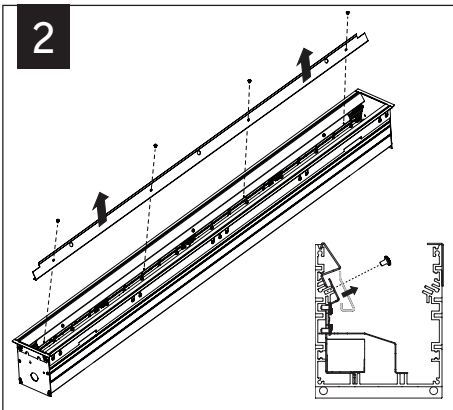
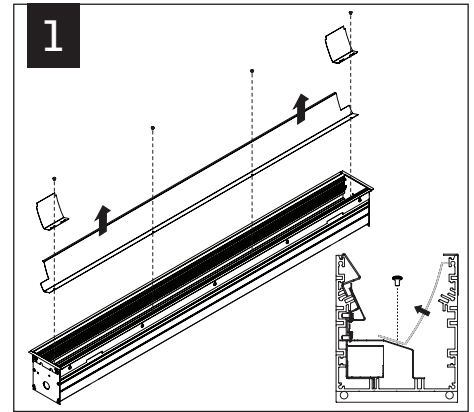
Luminaires must be installed by a qualified electrician (check with local and national codes for proper installation).
To prevent electrical shock, disconnect electrical supply before installation or servicing.

CEILING CUTOUT

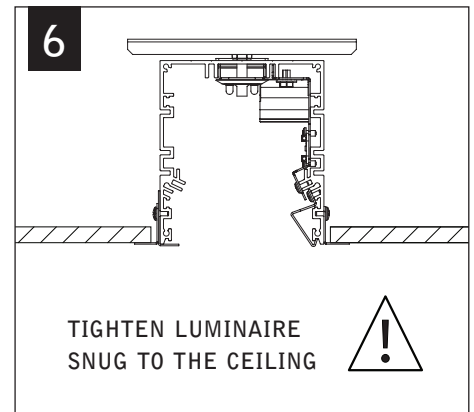
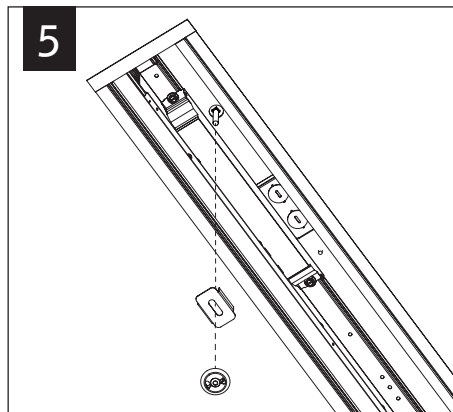
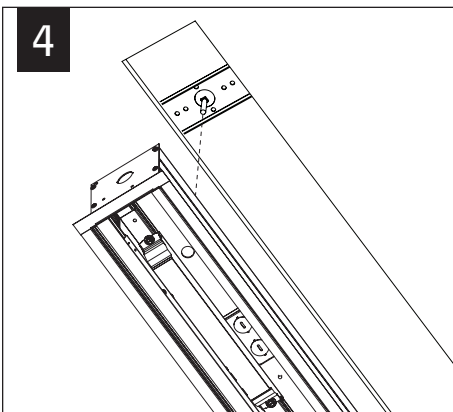


CEILING CUTOUT LENGTH =
NOMINAL RUN LENGTH MINUS 5/16" (+/- 1/16")

EXAMPLE:
12' RUN LENGTH = 11' 11-3/4" CUTOUT LENGTH



MAKE ELECTRICAL CONNECTIONS

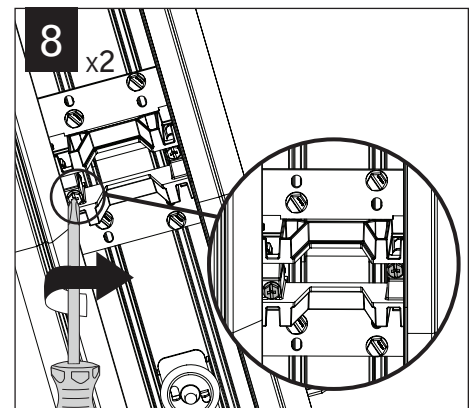
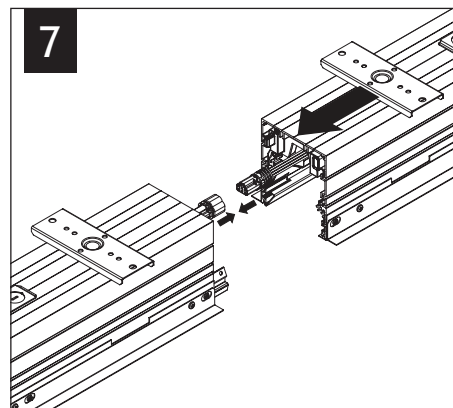


TIGHTEN LUMINAIRE
SNUG TO THE CEILING

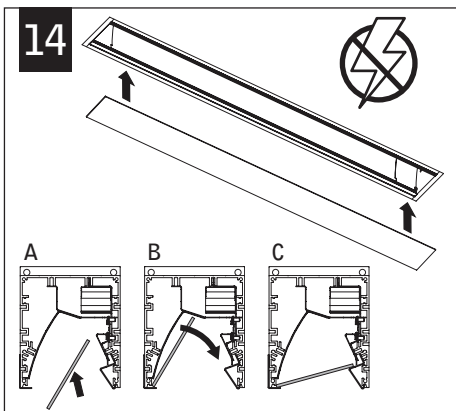
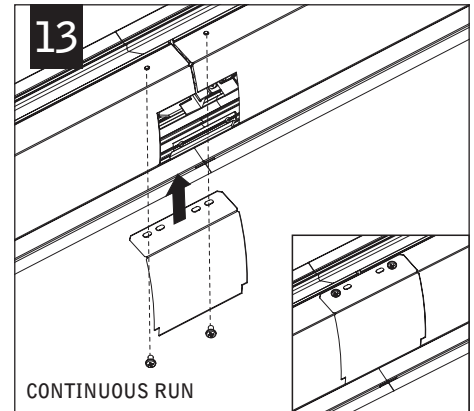
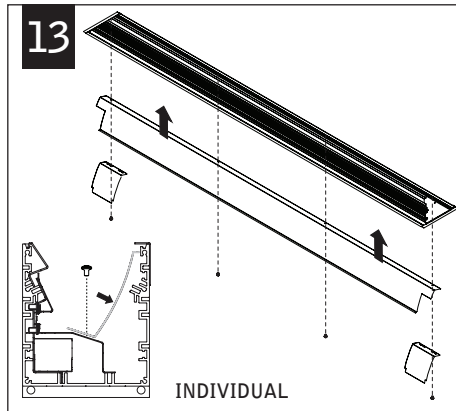
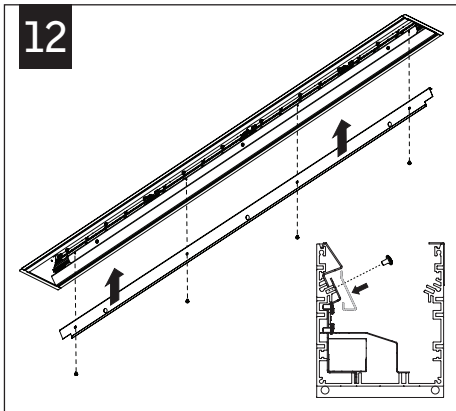
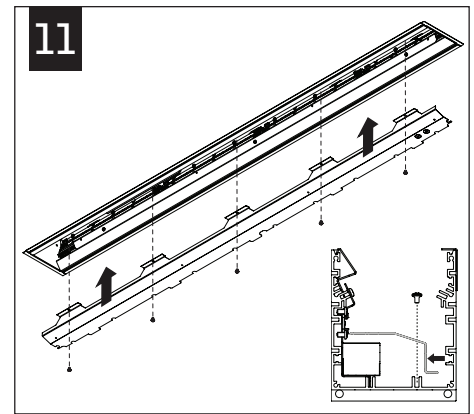
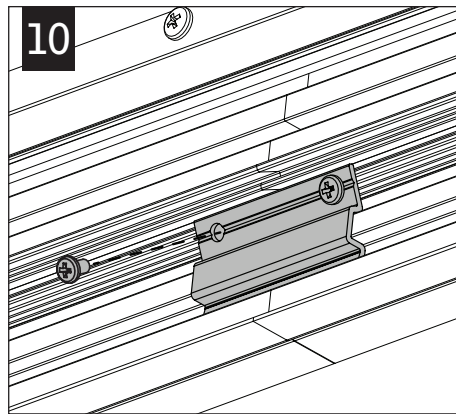
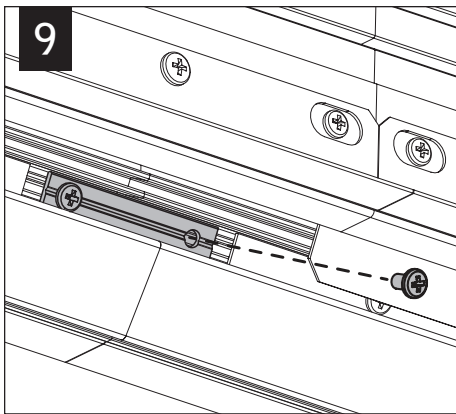


REPEAT STEPS 4-6
UNTIL ALL UNITS ARE
IN THE CEILING

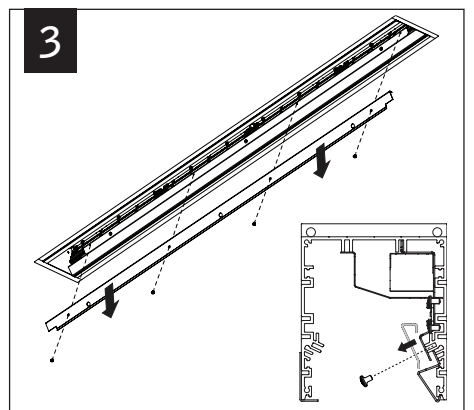
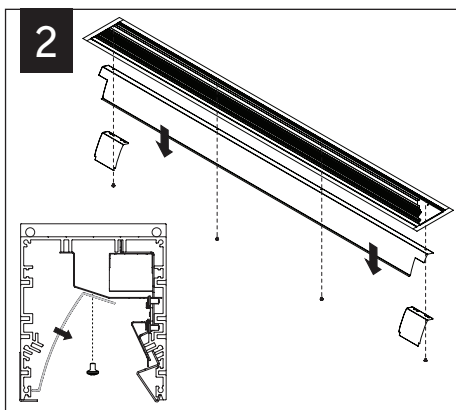
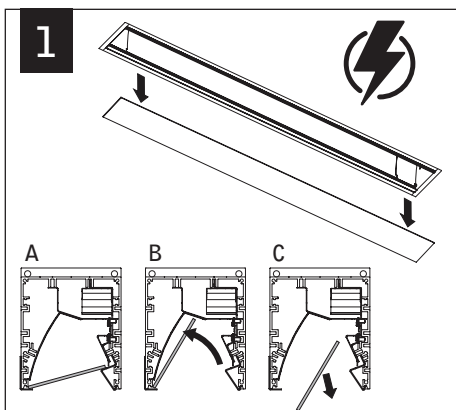
INDIVIDUAL INSTALLATIONS
SKIP TO STEP 11



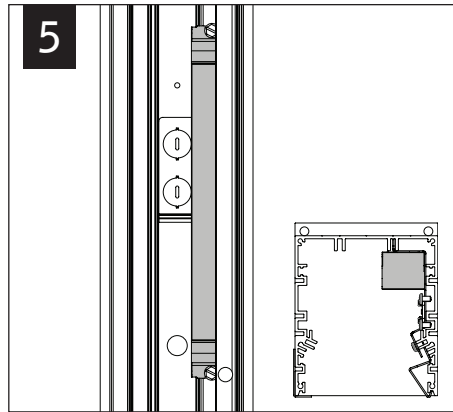
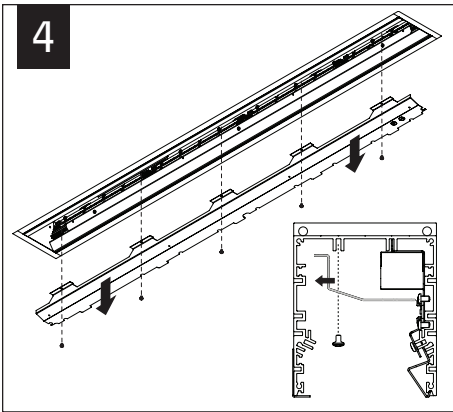
Luminaires must be installed by a qualified electrician (check with local and national codes for proper installation).
To prevent electrical shock, disconnect electrical supply before installation or servicing.



DRIVER SERVICE



Luminaires must be installed by a qualified electrician (check with local and national codes for proper installation).
To prevent electrical shock, disconnect electrical supply before installation or servicing.



Contractor is responsible for adequately reinforcing walls and/or ceilings to support luminaire weight. Focal Point, LLC accepts no responsibility for inadequately reinforced walls and/or ceilings. The information contained in this drawing is the sole property of Focal Point, LLC. Any reproduction in part or whole without the written permission of Focal Point, LLC is prohibited.