

# Seem® 2 Wet Location

Surface Mount | FSM2LWLS



## BEFORE YOU BEGIN

- Luminaires must be installed by a qualified electrician (check with local and national codes for proper installation).
- To prevent electrical shock, disconnect electrical supply before installation or servicing.
- Contractor is responsible for adequately reinforcing walls and/or ceilings to support fixture weight.
- Focal Point, LLC accepts no responsibility for inadequately reinforced walls and/or ceilings.
- The information contained in this drawing is the sole property of Focal Point, LLC. Any reproduction in part or whole without the written permission of Focal Point, LLC is prohibited.

## INSTRUCTION KEY



**ATTENTION**



**SEE ADDITIONAL INSTRUCTIONS**



**POWER OFF**



**POWER ON**

## COMPONENT KEY

### FOCAL POINT



U - Individual



S - Start of Run



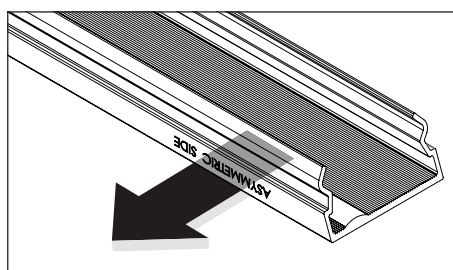
I - Intermediate



E - End of Run



Asymmetric, Batwing,  
and Flush Lens

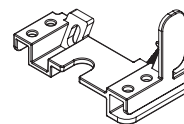


Asymmetric Lens Distribution Direction

### SHIPPED INSTALLED



Reflector Screw (72026)  
(6-32 x 1/4 SELF TAPPING SCREW)



Joiner Bracket  
Assembly  
(A48094-01)

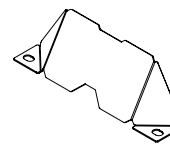
### SHIPPED IN HARDWARE BAG



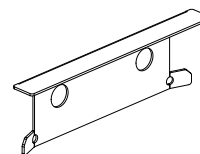
Extra Joiner Bracket Assembly Screw  
(700309)



Gripper Bracket & Joiner  
Blocker Screw (700348)  
(6-32 x 5/16 SELF TAPPING SCREW)



Joiner Blocker  
(A48495-01-WH)



Lens End Piece  
(A69966-01-WH)

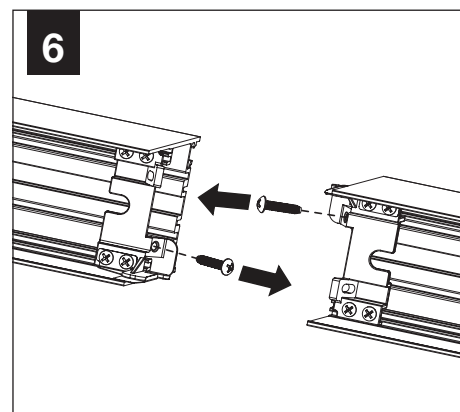
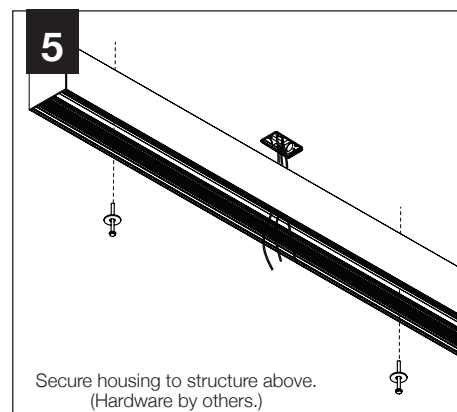
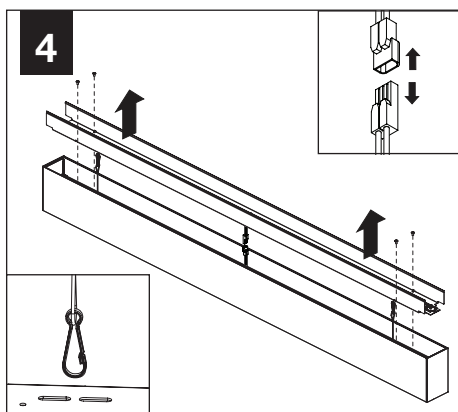
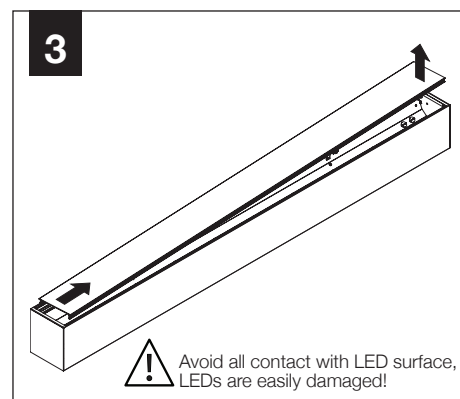
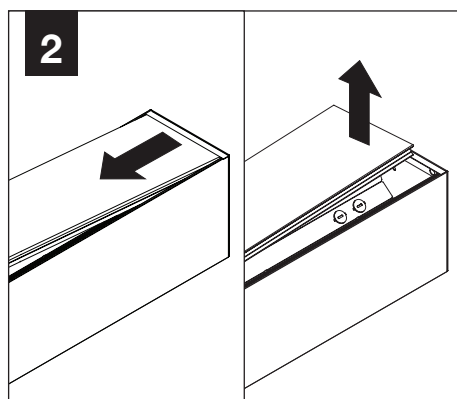
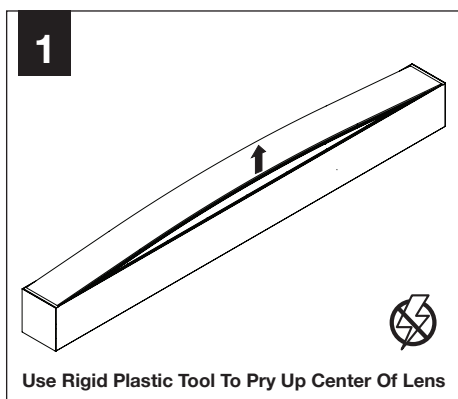
## MOUNTING

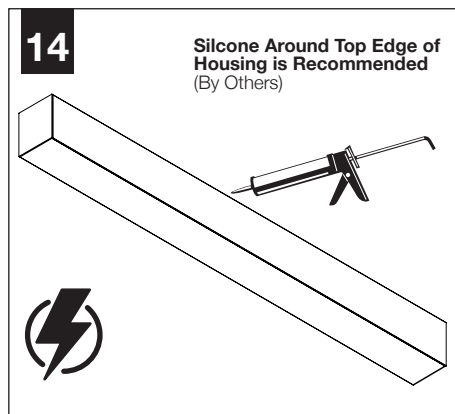
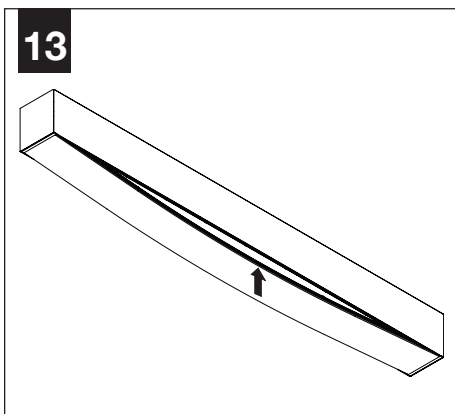
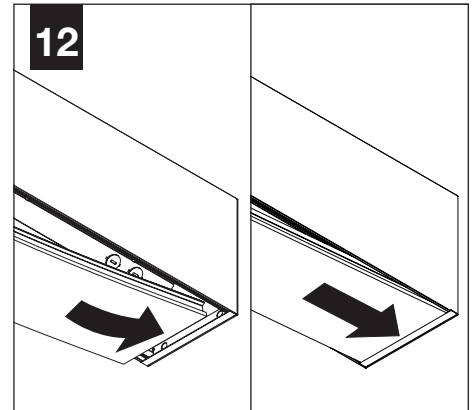
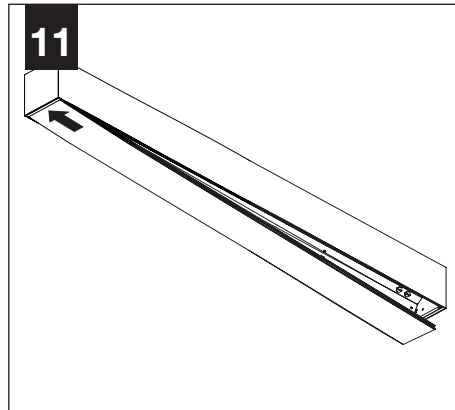
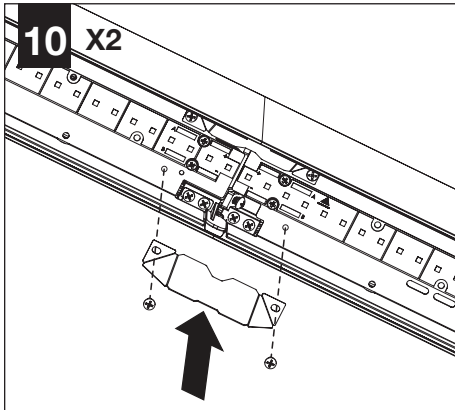
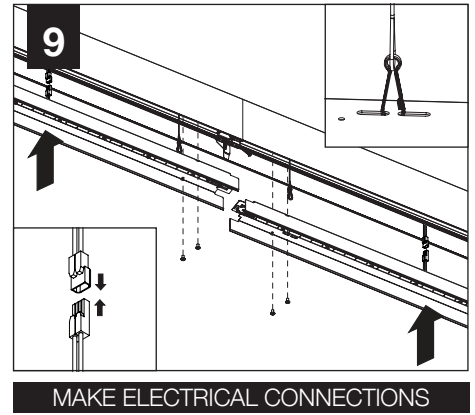
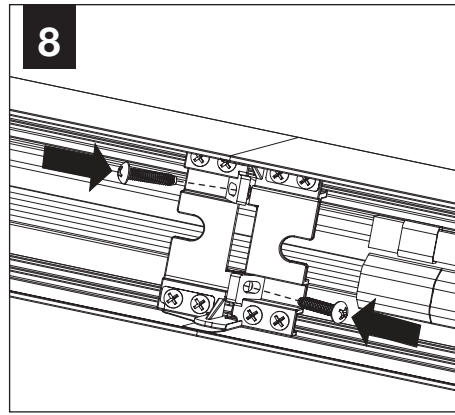
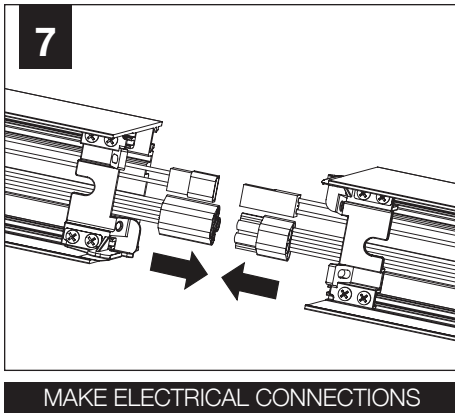


Feed location is always centered in housing, with the exception of the 2' housing.

Use single device cover or single gang handy box and mounting hardware (by others).

## ⚠️ INDIVIDUAL UNIT INSTALLATION FOLLOW STEPS 1-5, 9, 11-14





## DRIVER SERVICE

