

FSD 66 - SKYDOME 6x6

SAFETY AND INSTALLATION INSTRUCTIONS

FIXTURES MUST BE INSTALLED BY A QUALIFIED ELECTRICIAN (CHECK WITH LOCAL AND NATIONAL CODES FOR PROPER INSTALLATION). TO PREVENT ELECTRICAL SHOCK, DISCONNECT ELECTRICAL SUPPLY BEFORE INSTALLATION OR SERVICING.

1. READ ALL INSTRUCTIONS PRIOR TO INSTALLATION.
2. DISCONNECT ELECTRICAL POWER BEFORE SERVICING LUMINAIRE.
3. LEVELING BRACKETS ARE NOT INTENDED TO SUPPORT THE WEIGHT OF THE FIXTURE.
4. FIXTURE MUST BE PROPERLY SUPPORTED INDEPENDENTLY OF CEILING SYSTEM.

DRYWALL MOUNT:

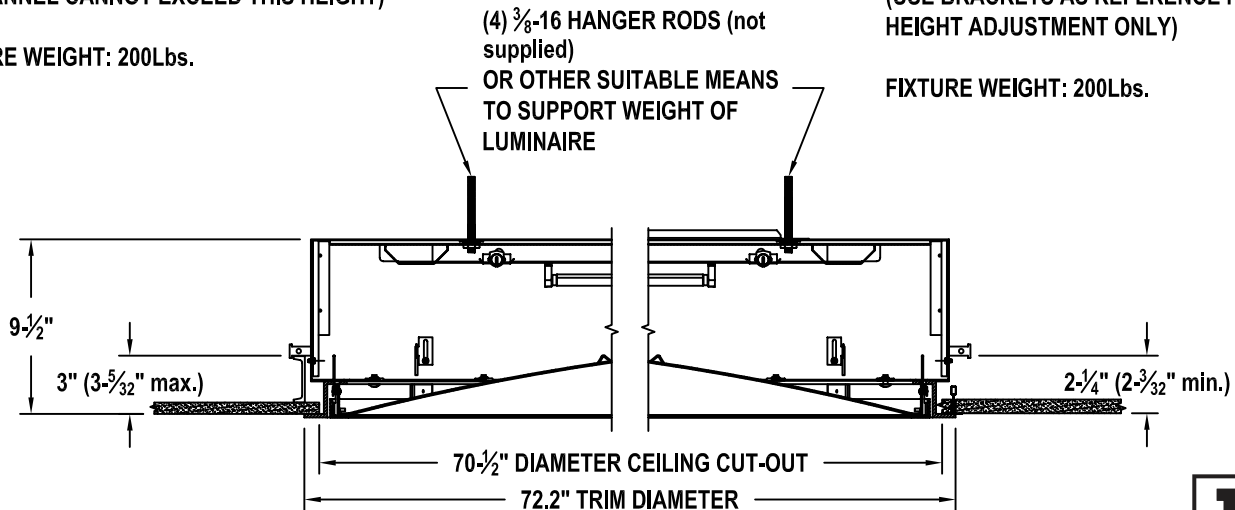
MAX. BRACKET HEIGHT = $3 \frac{5}{32}$ "
(C-CHANNEL CANNOT EXCEED THIS HEIGHT)

FIXTURE WEIGHT: 200Lbs.

T-GRID MOUNT:

MIN. BRACKET HEIGHT = $2 \frac{3}{32}$ "
(USE BRACKETS AS REFERENCE FOR HEIGHT ADJUSTMENT ONLY)

FIXTURE WEIGHT: 200Lbs.



EMERGENCY:

SEE BATTERY
MANUFACTURER
INSTRUCTIONS

EMERGENCY MAXIMUM
MOUNTING HEIGHT: 8.00'

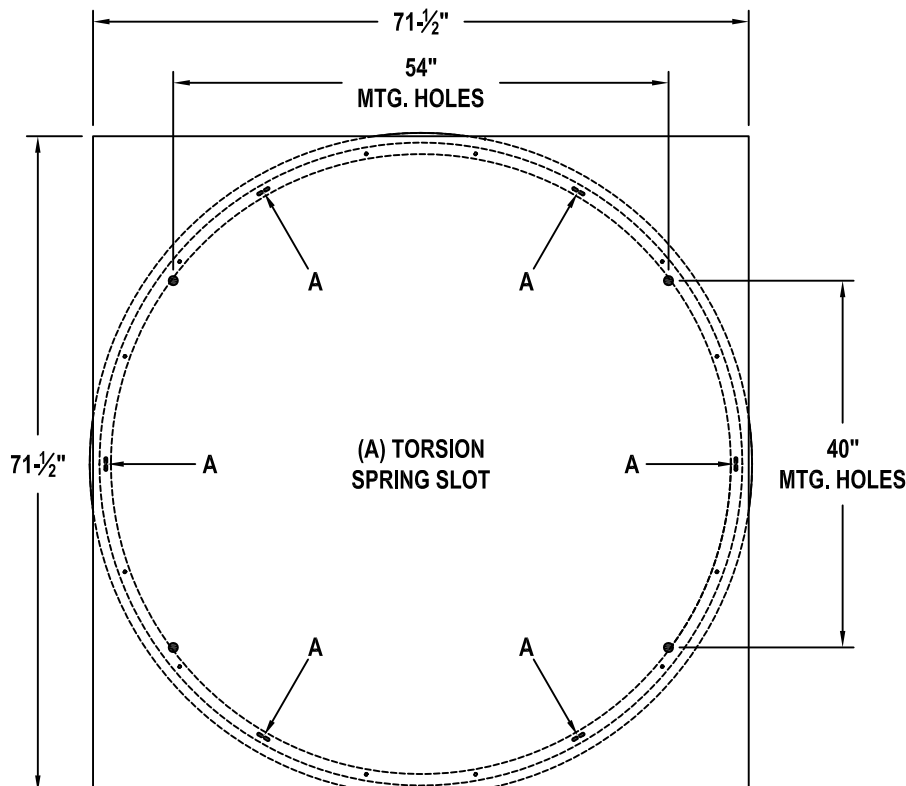
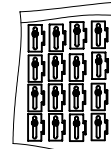


FIGURE 2 - PLAN VIEW

PARTS SUPPLIED WITH LUMINAIRE (16) LEVELING BRACKETS



PARTS NOT SUPPLIED WITH LUMINAIRE

- (4) $\frac{3}{8}$ -16 HANGER RODS
- (4) C-CHANNELS (DRYWALL ONLY)

CONTRACTOR IS RESPONSIBLE FOR ADEQUATELY REINFORCING WALLS AND/OR CEILINGS TO SUPPORT FIXTURE WEIGHT. FOCAL POINT, L.L.C. ACCEPTS NO RESPONSIBILITY FOR INADEQUATELY REINFORCED WALLS AND/OR CEILINGS.

THE INFORMATION CONTAINED IN THIS DRAWING IS THE SOLE PROPERTY OF FOCAL POINT LLC. ANY REPRODUCTION IN PART OR WHOLE WITHOUT THE WRITTEN PERMISSION OF FOCAL POINT LLC IS PROHIBITED. 2016 © FOCAL POINT LLC



INSTALLATION GUIDE NO.

ISO232

DWG. NO.

REV. C

****NOTE: LUMINAIRE MUST BE INSTALLED BEFORE CEILING!****

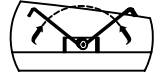
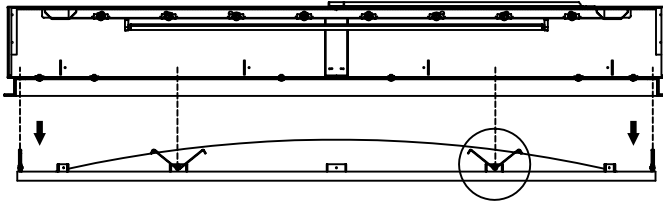
1.- REMOVE DOOR AND LENS ASSEMBLY BY:

**PULLING ON DOOR FRAME TO EXPOSE
RETAINING SPRINGS.**

**SQUEEZE RETAINING SPRINGS TO CLEAR
SLOT OPENING AND RELEASE DOOR X6.**

**PLACE DOOR IN A SAFE PLACE TO PROTECT
LENS.**

**DO NOT FLIP DOOR ASSEMBLY UPSIDE
DOWN, DO NOT PLACE HEAVY OBJECTS
OVER LENS.**



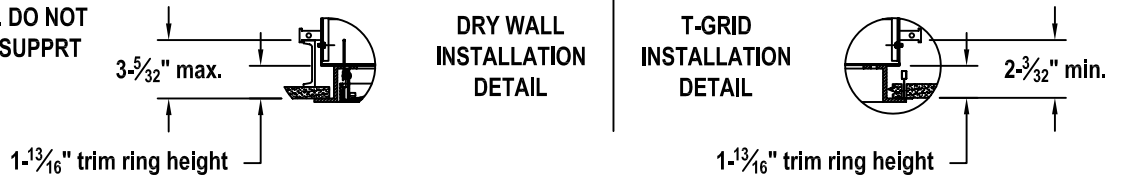
2.- REMOVE TRIM RING BY:

REMOVING 12 SCREWS.

**3.- MAIN HOUSING ASSEMBLY MUST BE
INSTALLED BEFORE CEILING:**

**SECURE MAIN HOUSING TO STRUCTURE
ABOVE CEILING WITH 3/8"-16 THREADED
ROD OR OTHER SUITABLE MEANS.**

**4.- ADJUST HEIGHT, LEVELING BRACKETS
CAN BE USED AS REFERENCE. DO NOT
USE LEVELING BRACKETS TO SUPPRT
WEIGHT OF LUMINAIRE.**



5.- REINSTALL TRIM RING, DOOR AND LENS ASSEMBLY:

DRYWALL OR CEILING PANELS MUST BE CUT TO FIT AROUND TRIM RING.

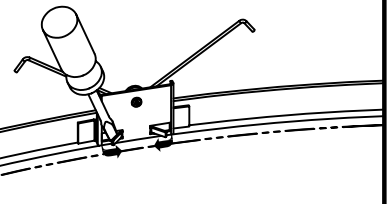
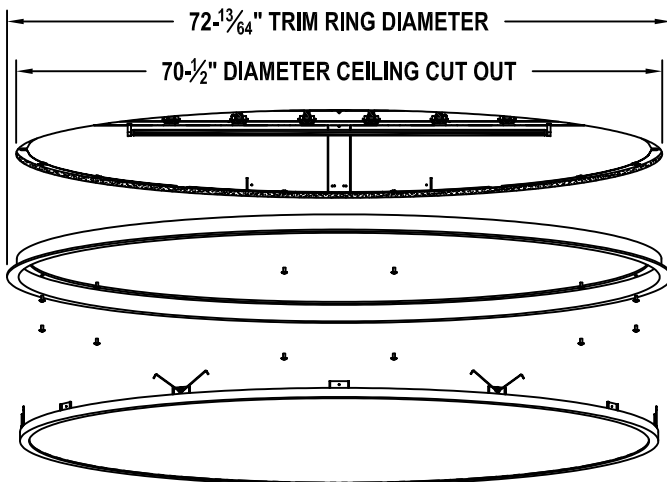
**FOR DRYWALL APPLICATION TRIM RING CAN BE USED AS A MUD
FLANGE.**

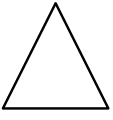
**FOR SUSPENDED CEILING "T-GRID" MUST BE CUT TO FIT AROUND TRIM
RING.**

*******LENS IS SHIPPED SEPARATELY AND MUST BE SECURED*****
BEFORE INSTALLATION , PRY TABS INWARD WITH A FLAT SCREW
DRIVER AROUND THE PERIMETER OF THE LENS.**

NOTE:

LENS MUST ALWAYS BE INSTALLED WITH THE DOME FACING IN.





BEFORE DOOR FRAME INSTALLATION, ENSURE TABS ON TORSION SPRING BRACKETS ARE BENT OVER THE LENS, SECURING IT IN PLACE.

FAILURE TO DO SO CAN RESULT IN A BROKEN LENS OR INJURY

