

flat endcap

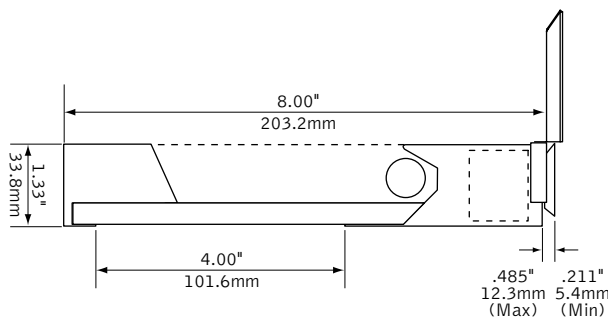


linear companion

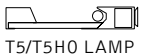


pendant companion

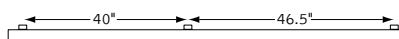
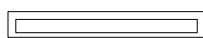
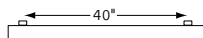
DIMENSIONAL DATA



lamping options



fixture information



FEATURES

Low profile wall mount indirect with luminous acrylic diffuser.

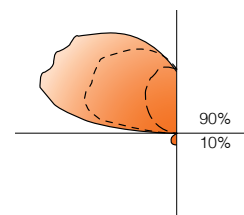
Sleek rectilinear housing only 1.3" high

Soft glowing acrylic panel creates contemporary look in any space.

Hidden mounting bracket creates the appearance of a floating luminaire.

Metro™ makes an exceptional aesthetic statement in conference rooms, private or open offices, reception areas or other high-end applications.

PERFORMANCE



1-Lamp T5HO
57% Efficient
1168 cd @ 115°

PRODUCT OVERVIEW

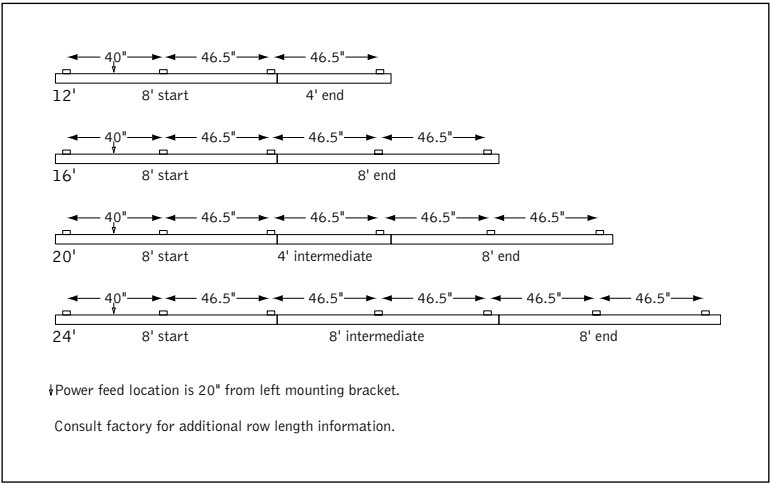
Lumen Output: 1641-2831lm
Wattage: 33-63W
Lamping: T5, T5HO

Visit focalpointlights.com for complete photometric data.

fixture:

project:

MOUNTING INFORMATION



SPECIFICATIONS

Construction

One-piece 20 Ga. steel housing. 14 Ga. steel end caps mechanically attach flush to housing with concealed fasteners. For row installation, internal brackets form hairline joint. Standard lengths are available in 46.5" and 93". All luminaires are provided with mounting brackets. 4' unit weight: 16 lbs., 8' unit weight: 30 lbs.

Optic

Reflector fabricated of low iridescent, semi specular premium grade aluminum. Luminous diffuser constructed of optical grade acrylic with linear diffusing pattern.

Electrical

Luminaires are pre-wired with factory installed branch circuit wiring with over-molded quick connects. Electronic ballasts are thermally protected and have a Class "P" rating. Optional dimming ballasts available.

Labels

UL and cUL listed.

Finish

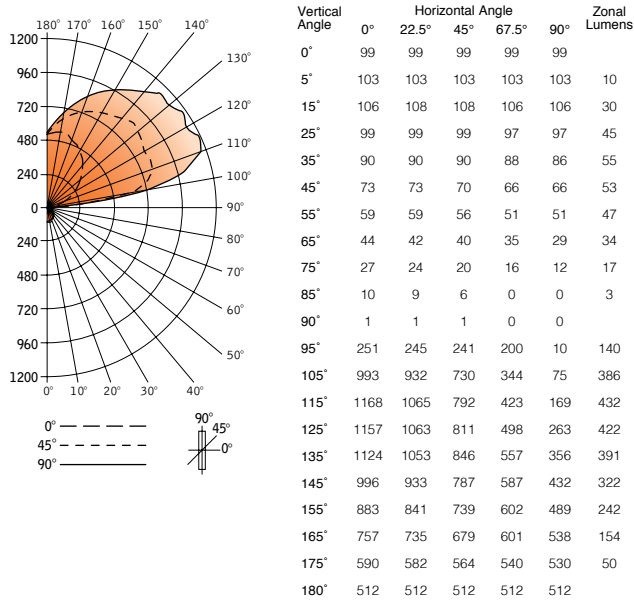
Polyester powder coat applied over a 5-stage pre-treatment. Mounting brackets, rail and J-box plate finished in Matte Satin White.

ORDERING

Luminaire Series		FMEW
Metro	FMEW	
Shielding		PA
Linear Patterned Acrylic Diffuser	PA	
Lamping		
1 Lamp T5	1T5	
1 Lamp T5HO	1T5HO	
Circuit		1C
Single Circuit	1C	
Voltage		
120 Volt	120	
277 Volt	277	
347 Volt	347	
(Consult factory for availability and dimming options)		
Ballast		
Electronic Program Start <10% THD	S	
0-10V	D7	
Lutron 1% 3-wire	DH	
Lutron 1% H-Series	DK	
Mounting		WM
Wall Mount	WM	
Factory Options		
Emergency Circuit*	EC	
Emergency Battery Pack*	EM	
HLR/GLR Fuse	FU	
Include 3000K Lamp*	L830	
Include 3500K Lamp*	L835	
Include 4100K Lamp*	L841	
Finish		
Titanium Silver	TS	
Matte Satin Housing	WH	
Luminaire Run Length		
4'	4'	
8'	8'	
12' (8'+4')	12'	
16' (8'+8')	16'	
20' (8'+4'+8')	20'	
24' (8'+8'+8')	24'	

(Above are nominal lengths. See continuous run configurations for exact dimensions.)

CANDLEPOWER DISTRIBUTION



LUMEN SUMMARY

	Zone	Lumens	% Lamp	% Fixture
Total Luminaire	0°-30°	85	1.7	3.0
	0°-90°	293	5.9	10.4
	90°-130°	1380	27.6	48.7
	90°-180°	2538	50.8	89.6
	0°-180°	2831	56.6	100.0

LUMINANCE DATA (cd/m²)

Vertical Angle	0°	45°	90°
45°	911	2492	2336
55°	118	441	137
65°	34	67	101
75°	0	55	55
85°	0	41	41

Go to www.focalpointlights.com for additional photometric data.