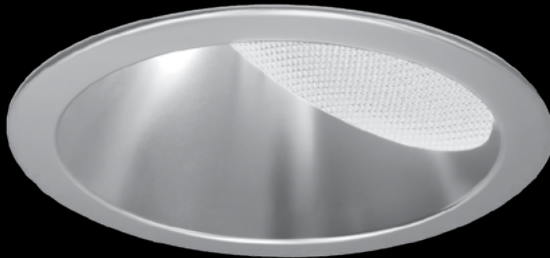


# id<sup>®</sup> 4.5"

LED - REMOTE PHOSPHOR EMERGENCY WALL WASH



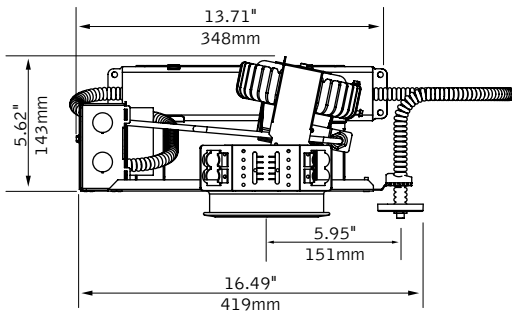
clear diffuse



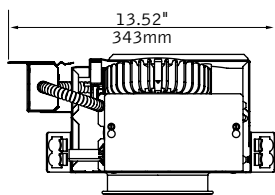
warm diffuse

## DIMENSIONAL DATA

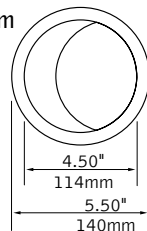
wall wash remote test switch (EMR) – above ceiling access



note: FL4WFT housing height is 5.97".



trim



## FEATURES

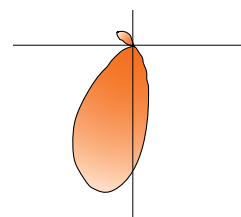
LED module features remote phosphor technology enabling a high system efficacy and minimum 80 CRI.

Battery pack delivers emergency light levels and is compatible with all available LED modules. Remote test switch available.

Flicker-free 0-10V analog dimming capability standard.

LED module tilted to deliver excellent wall wash performance.

## PERFORMANCE



Clear Diffuse Reflector  
3000k, 1500 Lumen LED  
Module

**Delivered Lumens: 1053lm**  
**Total System Watts: 21W**

### PRODUCT OVERVIEW

Lumen Output:	809-1419lm
Wattage:	16-29W
LPW:	49-50
SDCM:	3
Lumen Maintenance:	L70 @ 50,000hrs

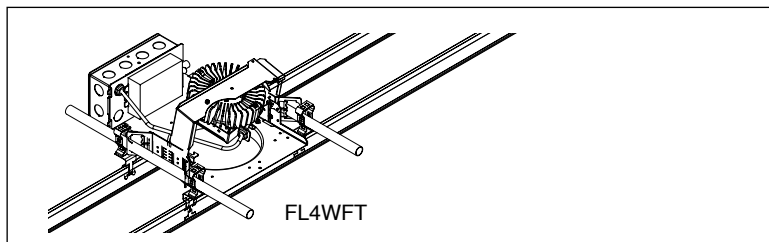


Photometric performance is measured in accordance with IESNA LM-79.  
Visit [focalpointlights.com](http://focalpointlights.com) for complete photometric data.

fixture:

project:

**HOUSING TYPES** (Note: Wall wash must be positioned perpendicular to length of technical zone.)



**HOUSING SPECIFICATIONS**

**LED System**

Powered by Philips' Fortimo™ LED DLM, Advance Xitanium LED driver and communication cable. Aluminum heat sink provides appropriate thermal management.

**LED Module**

Philips' Fortimo™ LED DLM features patented remote phosphor technology for superior efficacy and color consistency. Module may be specified in 3000K or 3500K, CRI>80.

**Construction**

Thermally protected housing for new construction applications. Insulation to be kept 3" away from housing. Butterfly brackets allow mounting to ½ emt. Order bar hangers as an accessory. Die-cast aluminum heat sink designed for maximum thermal dissipation. Die-formed housing and integral junction box with (7) 1/2" pry outs. Accommodates ceiling thicknesses up to 1" (FL4W) or 2" (FL4WFT). FL4WFT housing includes mounting clips to integrate between 6" on center tees. Fixture will not exceed 5 lb. 18" O.C. fixture to wall and 36" O.C. fixture to fixture spacing required.

**Electrical**

Advance Xitanium multi-volt 120V-277V constant current driver includes standard 0-10V analog dimming. Power factor >.9 typical, 50/60Hz., 200-700mA. "Thermal Guard" offers protection from overheating in abnormal conditions; driver will dim DLM if necessary. Voltage specific thermal protectors included standard.

**Emergency Battery**

Bodine BSL17C-C2.Emergency output—660 module lumens for all available models.

**Dimming**

0-10V DC low voltage dimming capability is included with the standard Advance Xitanium driver. Dimming range is to 10% light output, some dimmers may require high and/or low end trim adjustment for proper function.

**Labels**

UL and cUL listed. Suitable for Dry or Damp Locations, indoor use only. Lensed trims suitable for Wet Location.

**Lumen Maintenance**

L70 at 50,000 hours

**Warranty**

LED System rated for operation in ambient environments up to 25°C. 5 year limited warranty.

**TRIM SPECIFICATIONS**

**Aesthetics**

Parabolic reflector cone ensures glare free optics. Reflector is .050 spun aluminum. Torsion springs pull trim tight to the ceiling with no visible fasteners within the trim. Trims are self-flanged, non-painted to match reflector finish. White painted flange may also be specified.

**Optics**

Wall wash features high reflectance white kicker reflector and Prismatic tempered glass diffuser to provide smooth illumination down the wall.

**PERFORMANCE CHART**

Nominal Output	Color Temp	System Watts	Delivered Lumens	LPW
11LED	3000K	16	809	49.4
15LED	3000K	21	1053	50.1
20LED	3000K	29	1419	49.5

\*Based on Clear Diffuse reflector cone. Rated Output is the same for all color temps. Wattage reduction with other color temps. Lumen output may vary +/- 5%. Actual wattage may vary +/- 5%.

**HOUSING ORDERING**

<b>Housing Series</b>	_____
ID LED Round	FL4W
ID LED Round for mounting between 6" on center tees <small>(Not recommended with single-tile spacing between fixtures due to ceiling tile interference)</small>	FL4WFT

<b>Trim Type</b>	_____
Round Flush	RF
Round Overlap	RO

<b>Nominal Output</b>	_____
1100 Lumen LED Module	11LED
1500 Lumen LED Module	15LED
2000 Lumen LED Module	20LED

<b>Color Temperature</b>	_____
3000K	30K
3500K	35K

<b>Voltage</b>	_____
120V	120
277V	277

<b>Driver</b>	_____
0-10V Dimming	LD1
Lutron A-Series - 1% EcoSystem Digital <small>(consult factory for 3-wire control)</small>	L3D

<b>Housing Type</b>	<b>T</b>	_____
Thermally Protected, Non-IC	T	

<b>Factory Options</b>	_____
Bar Hangers <small>(FL4W only)</small>	BH
Emergency Battery Pack with Remote Test Switch <small>(Above ceiling access)</small>	EMR

**TRIM ORDERING**

<b>Aperture</b>	_____
4.5" Round Reflector	L4

<b>Trim Type</b>	_____
Round	RD

<b>Optic</b>	_____
Lensed Wall Wash <small>(Wet location)</small>	WW

<b>Color</b>	_____
Clear Diffuse	CD
Warm Diffuse	WD

<b>Flange Finish</b>	_____
Non-Painted	NP
White Painted	WP

A complete unit consists of two line items, housing and trim  
Example: FL4W-RO-15LED-30K-120-LD1-T-EMR | L4-RD-WW-CD-NP



# id<sup>®</sup> 4.5"

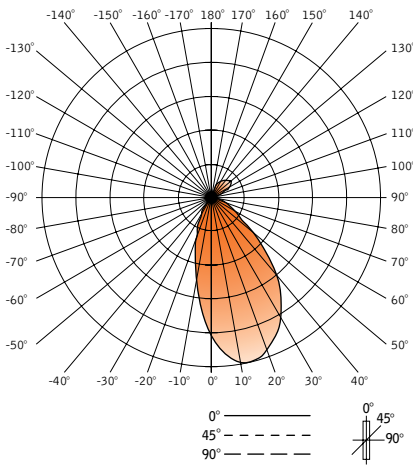
LED WALL WASH

## FL4W-RO-11LED-L30-120-LD1-T / L4-RD-WW-CD

Filename: FL4WWCD11LEDL30.IES  
 Test #: 101418870CHI-009

Lumens: 809lm  
 System Watts: 16W  
 LPW: 49

### CANDLEPOWER DISTRIBUTION



Vertical Angle	Horizontal Angle				
	0°	22.5°	45°	67.5°	90°
0°	543	543	543	543	543
5°	604	596	580	556	528
15°	629	612	569	505	430
25°	563	540	481	391	284
35°	441	416	346	241	150
45°	262	238	181	118	72
55°	125	113	88	58	31
65°	62	56	43	37	12
75°	24	22	22	12	4
85°	2	11	33	10	2
90°	1	20	43	13	2
95°	2	20	33	18	4
105°	4	28	48	48	19
115°	56	57	64	59	28
125°	72	68	67	61	38
135°	76	68	58	57	44
145°	67	62	54	53	46
155°	54	49	36	44	41
165°	6	7	7	13	15
175°	1	1	1	1	1
180°	1	1	1	1	1

### LUMEN SUMMARY

Zone	Lumens	% Fixture
0-30°	316.7	39.2
0-40°	446.2	55.2
0-60°	576.2	71.2
0-90°	623.6	77.1
<b>Total Luminaire 0-180°</b>	<b>808.8</b>	<b>100.0</b>

Go to [www.focalpointlights.com](http://www.focalpointlights.com) for additional photometric data.

# id<sup>®</sup> 4.5"

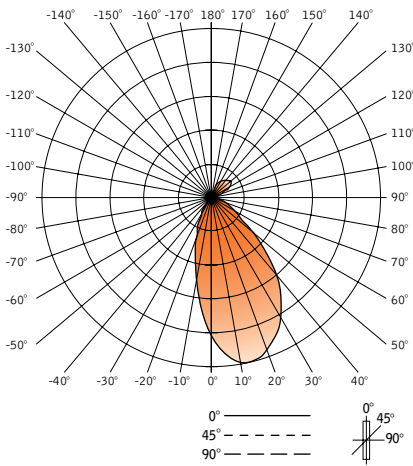
LED WALL WASH

## FL4W-RO-15LED-L30-120-LD1-T / L4-RD-WW-CD

Filename: FL4WWCD15LEDL30.IES  
 Test #: 101418870CHI-010

Lumens: 1053lm  
 System Watts: 21W  
 LPW: 50

### CANDLEPOWER DISTRIBUTION



Vertical Angle	Horizontal Angle				
	0°	22.5°	45°	67.5°	90°
0°	693	693	693	693	693
5°	774	764	742	711	674
15°	806	786	730	646	548
25°	718	692	614	498	360
35°	563	531	439	308	192
45°	334	306	234	152	92
55°	159	146	114	74	39
65°	79	72	55	46	17
75°	31	28	28	15	6
85°	2	13	45	14	2
90°	2	24	53	15	2
95°	3	23	41	21	5
105°	5	34	66	61	24
115°	92	94	84	74	38
125°	115	108	89	81	52
135°	116	102	84	82	61
145°	102	94	79	79	64
155°	88	83	64	64	57
165°	17	13	11	16	20
175°	1	1	1	2	1
180°	1	1	1	1	1

### LUMEN SUMMARY

Zone	Lumens	% Fixture
0-30°	403.6	38.3
0-40°	568.6	54.0
0-60°	735.8	69.9
0-90°	795.7	75.6
<b>Total Luminaire 0-180°</b>	<b>1053</b>	<b>100.0</b>

Go to [www.focalpointlights.com](http://www.focalpointlights.com) for additional photometric data.

# id<sup>®</sup> 4.5"

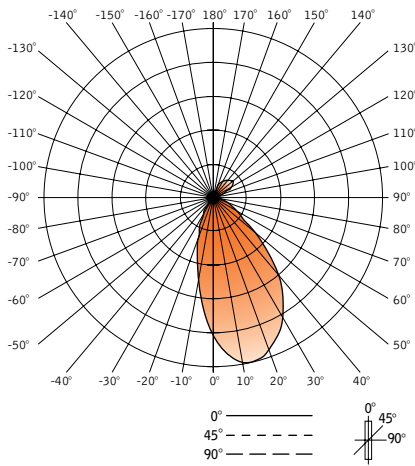
LED WALL WASH

## FL4W-RO-20LED-L30-120-LD1-T / L4-RD-WW-CD

Filename: FL4WWCD20LEDL30.IES  
 Test #: 101418870CHI-011

Lumens: 1419lm  
 System Watts: 29W  
 LPW: 49

### CANDLEPOWER DISTRIBUTION



Vertical Angle	Horizontal Angle				
	0°	22.5°	45°	67.5°	90°
0°	901	901	901	901	901
5°	1027	1010	975	927	873
15°	1090	1063	975	850	706
25°	985	947	830	660	461
35°	791	740	603	409	248
45°	484	439	323	203	120
55°	231	212	160	100	52
65°	114	104	78	63	22
75°	46	42	37	21	8
85°	6	19	61	16	3
90°	2	34	77	23	3
95°	3	36	58	28	6
105°	6	47	88	81	30
115°	117	122	114	101	51
125°	154	147	133	108	75
135°	158	143	120	109	85
145°	142	127	111	105	90
155°	123	117	99	86	79
165°	45	36	15	24	28
175°	2	3	3	3	2
180°					

### LUMEN SUMMARY

Zone	Lumens	% Fixture
0-30°	529.7	37.3
0-40°	751.9	53.0
0-60°	981.6	69.2
0-90°	1065	75.1
<b>Total Luminaire 0-180°</b>	<b>1419</b>	<b>100.0</b>

Go to [www.focalpointlights.com](http://www.focalpointlights.com) for additional photometric data.

# id<sup>®</sup> 4.5"

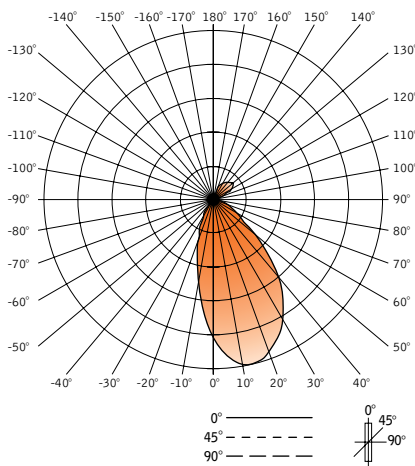
LED WALL WASH

## FL4W-RO-30LED-L30-120-LD1-T / L4-RD-WW-CD

Filename: FL4WWCD30LEDL30.IES  
 Test #: 101418870CHI-012

Lumens: 2026lm  
 System Watts: 41W  
 LPW: 50

### CANDLEPOWER DISTRIBUTION



Vertical Angle	Horizontal Angle				
	0°	22.5°	45°	67.5°	90°
0°	1305	1305	1305	1305	1305
5°	1480	1459	1410	1342	1264
15°	1576	1537	1412	1231	1026
25°	1426	1371	1203	955	668
35°	1141	1071	876	592	359
45°	700	637	470	295	172
55°	337	308	233	146	75
65°	165	152	114	89	33
75°	67	62	55	32	11
85°	8	30	82	21	4
90°	2	53	109	29	4
95°	5	54	77	39	8
105°	10	63	91	99	45
115°	135	160	157	147	79
125°	220	211	174	160	105
135°	212	203	160	154	118
145°	188	178	147	144	125
155°	155	147	126	112	111
165°	46	40	21	34	40
175°	3	4	4	4	3
180°	2	2	2	2	2

### LUMEN SUMMARY

Zone	Lumens	% Fixture
0-30°	766.5	37.8
0-40°	1088	53.7
0-60°	1421	70.1
0-90°	1543	76.2
<b>Total Luminaire 0-180°</b>	<b>2026</b>	<b>100.0</b>

Go to [www.focalpointlights.com](http://www.focalpointlights.com) for additional photometric data.