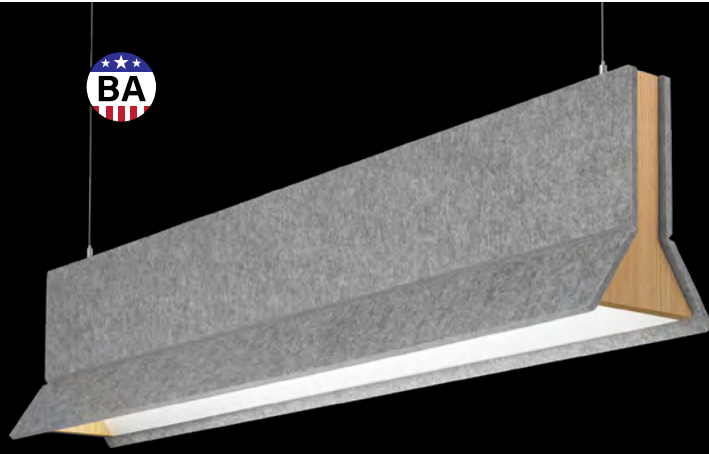


Eave®

ACOUSTIC PENDANT



FOCAL POINT®



White Oak Canopy



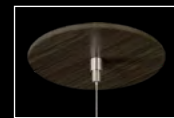
White Oak End Cap



Amber Oak Canopy



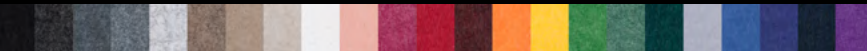
Amber Oak End Cap



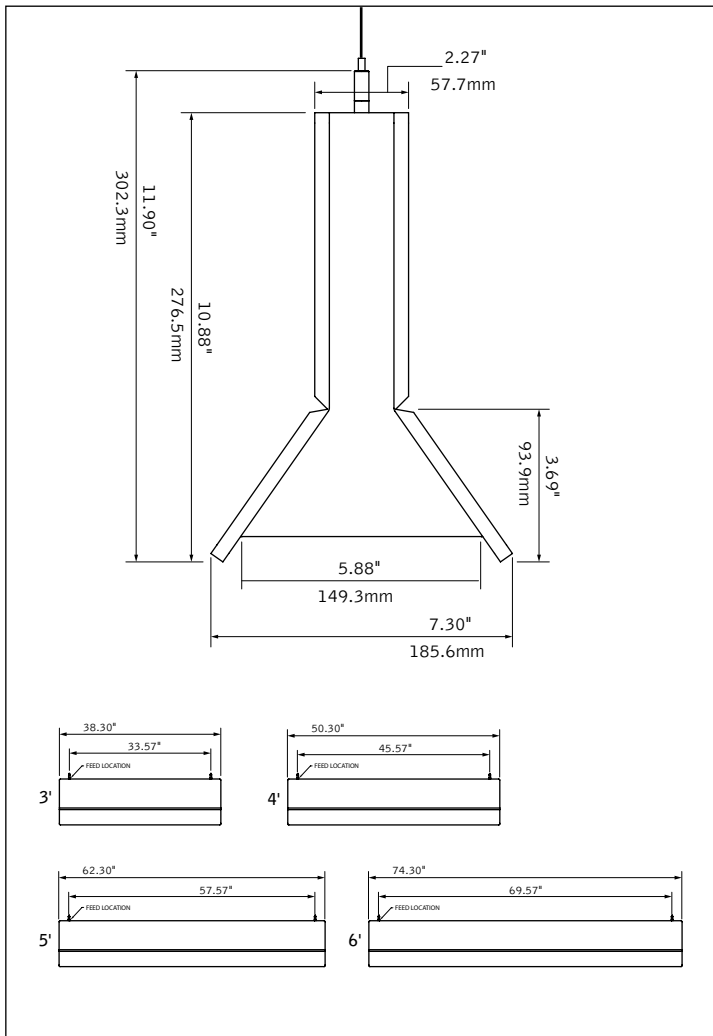
Espresso Oak Canopy



Espresso Oak End Cap



DIMENSIONAL DATA



FEATURES

Nominal 11" height decorative PET felt pendant with wood end caps.

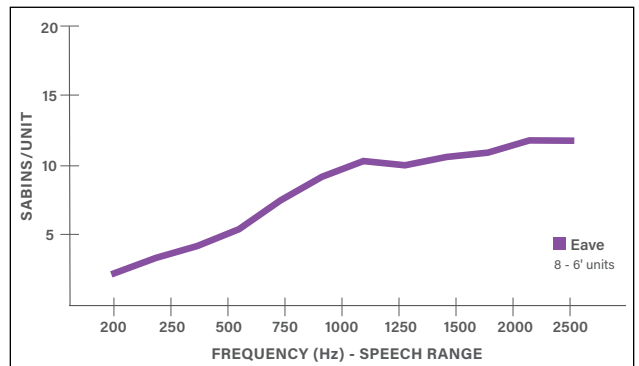
Available in 3', 4', 5' and 6' lengths.

Direct only or independently controlled Indirect/Direct distributions (3' direct only).

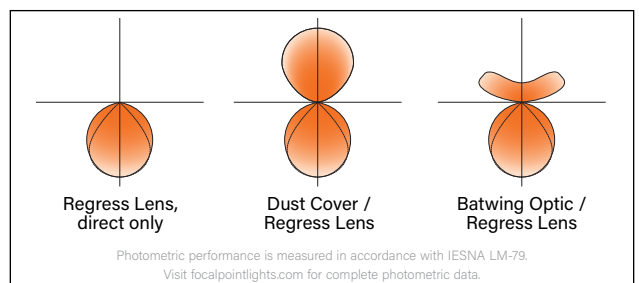
AirCore™ Technology: patent pending, eco-friendly technology that maximizes sound absorption and reduces ecological impact.

Excellent companion to Seem 1 Acoustic and Seem 1 Acoustic Trio with matching baffle width.

ACOUSTIC PERFORMANCE



DISTRIBUTIONS



fixture:

project:

SPECIFICATIONS

Acoustic Material

Content	Housing material is 100% polyester containing up to 50% of recycled plastic bottles (PET felt) with an ASTM E-84 Class A / CAN ULC S102 fire rating and is moisture resistant. See page 3 for color offering. Acoustic material colors are subject to change without notice. For the most current color options, please visit focalpointlights.com/acousticsolutions. Lead times may vary depending on color.
Cleaning and Care	Remove dust and debris with a clean, soft, lint-free cloth or vacuum
PET Thickness	9mm
Surface Burning Characteristics	ASTM E84 Class A / CAN ULC S102 Flame Spread: 0, Smoke Development Index: 300
Colorfastness	AATCC 16A Option 3 Class 4 minimum at 40 hours
NRC	0.9

Acoustic Performance

Acoustic testing is performed on all Focal Point acoustic products and varies based on installation and configuration. ASTM C423 test reports can be downloaded from focalpointlights.com. Contact acoustic.solutions@focalpointlights.com for technical questions.

LED System

Proprietary linear LED module incorporates premium LEDs on a robust platform to achieve excellent thermal management. LEDs are placed to promote a uniform appearance. 80 and 90 CRI available in 3000K, 3500K or 4000K color temperatures. LED drivers are replaceable from above. Color accuracy <3 SDCM.

Weight

3' length = 13lbs. 4' length = 19lbs. 5' length = 25lbs. 6' length = 27lbs.

Optic

Reflectors fabricated of 22 Ga. steel finished in Matte White powder coat. Extruded acrylic lens .05" thick with frosted finish. .002" thick clear acrylic dust cover.

End Cap

0.75" thickness White Oak. Available in Amber Oak, Espresso Oak or White Oak finishes. Consult factory for custom finishes. Slight variations in color and grain are inherent to the nature of real wood products and should be expected.

Installation

Individual units only. Not intended for use in straight rows. Cannot be joined in the field.

Electrical

Luminaires are pre-wired with factory installed branch circuit wiring and over-molded quick connects. Standard 120-277V constant current driver includes 0-10V analog dimming. Power factor > .9.

Labels

UL and cUL listed. Suitable for Dry Locations, indoor use only.

Lumen Maintenance

Reported: L70 at >61,000 hours Calculated: L70 at 470,000 hours
 L90 at >61,000 hours L90 at 115,000 hours

Derived from EPA TM-21 calculator. Based on typical conditions, consult factory for additional data.

Reliability

At Focal Point, our products are designed to stand the test of time. Each luminaire is engineered using superior components, manufactured with the utmost care and rigorously tested. Contact us for reliability data.

Warranty

LED system rated for operation in ambient environments up to 25°C and when mounted no less than 75" from the ceiling. 5-year limited warranty.

Shielding	Lumens per Foot	Delivered Lumens	Tested System Watts	LPW
Regress Lens	200	800	9.65	83
	300	1200	13.14	91
	400	1607	17.20	93
	500	2064	22.15	90
	600	2400	26.68	90
	700	2800	31.33	89

Based on 3500K, 4' lengths. Lumen Multipliers: Preferred Light = 0.65, 90 CRI = 0.87. Lumen output may vary +/- 5%. Actual wattage may vary +/- 5%.

ORDERING

Luminaire Series

Eave Acoustic Pendant DVGP

Luminaire Length

(Lengths are nominal. Individual units only. Not intended for use in straight rows. Cannot be joined in the field.)

3'	3
(3ft unit direct distribution only)	
4'	4
5'	5
6'	6

Acoustic Panel Color

See page 3 for color offering

End Cap Finish

Amber Oak	AOK
Espresso Oak	EOK
White Oak	WOK

Suspension

24" Aircraft Cable Suspension	C24
48" Aircraft Cable Suspension	C48
96" Aircraft Cable Suspension	C96
120" Aircraft Cable Suspension	C120

Canopy Finish

(All canopies are 5" round)

Amber Oak	AOK
Espresso Oak	EOK
White Oak	WOK
Black painted	BK
White painted	WH
Titanium Silver painted	TS

Cable Color

Black	BK
White	WH
Gray	GRY

(Gray cord 1C only)

Shielding

Regress lens, direct only RL

(Required with 3ft.)

Dust Cover top/Regress lens bottom	DCRL
Batwing Optic top/Regress lens bottom	BWRL

Direct Distribution

200 Lumens per foot	200DN
300 Lumens per foot	300DN
400 Lumens per foot	400DN
500 Lumens per foot	500DN
600 Lumens per foot	600DN
700 Lumens per foot	700DN

Indirect Distribution

No indirect 0UP
(Required with RL Shielding. Required with 3ft.)

125 Lumens per foot (LD1 driver only with 4ft length)	125UP
250 Lumens per foot	250UP
375 Lumens per foot	375UP
500 Lumens per foot	500UP
625 Lumens per foot	625UP
800 Lumens per foot	800UP

Color Temperature

3000K, 80CRI or 90 CRI	30K or 930K
3500K, 80CRI or 90 CRI	35K or 935K
4000K, 80CRI or 90 CRI	40K or 940K

Circuit

Single Circuit	1C
Dual Circuit	2C

(Direct/Indirect luminaires only)

Voltage

120/277 UNV Volt	UNV
------------------	-----

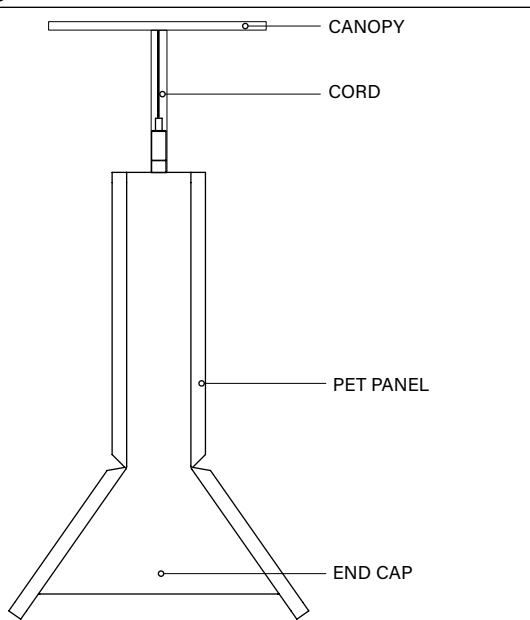
Control System & Dimming Level

0-10V - 10% Dimming	LD1
0-10V - 1% Dimming	L11
Lutron Hi-Lume EcoSystem (LDE1) - 1% Dimming	LH1
DALI 1% Dimming	D11

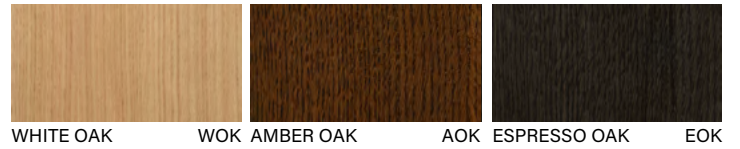
Decorative Finishes



Finish Diagram



End Cap & Canopy Finishes[†]



Canopy only Finishes

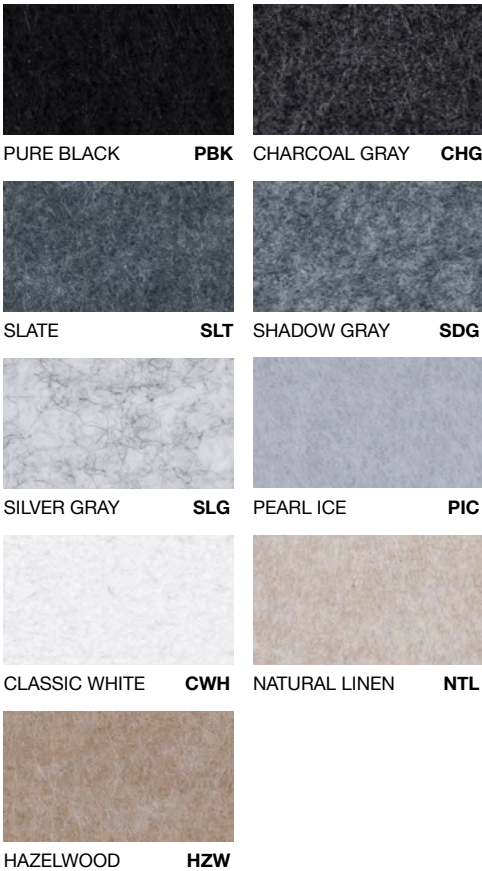


Cord Material



PET Material*

STANDARD PET



PREMIUM PET



Slight color variations are inherent to the PET felt manufacturing process. Color renditions on screens vary due to display settings and lighting conditions.

Order samples at focalpointlights.com/Samples

Declare.

PET
Focal Point, LLC

Final Assembly: Chicago, Illinois, USA
Life Expectancy: 30 Year(s)
End of Life Options: Salvageable/Reusable in its Entirety, Recyclable (100%)

Ingredients:

Polyethylene terephthalate: PET; N, N'-Ethylene bisstearamide: Octadecanamide, N,N'-1,2-ethanediybis-; Stearic Acid; Antioxidant 1076: Benzenepropanoic acid, 3,5-bis(1,1-dimethylethyl)-4-hydroxy-, octadecyl ester; Antioxidant KY-405: Benzenamine, 4-(1-methyl-1-phenylethyl)-N-(4-(1-methyl-1-phenylethyl)phenyl)-; Titanium Dioxide: Titanium dioxide

Living Building Challenge Criteria:

I-13 Red List:

- LBC Red List Free
- LBC Red List Approved
- Declared

% Disclosed: 100% at 100ppm
VOC Content: Not Applicable

I-10 Interior Performance: Not Compliant
I-14 Responsible Sourcing: Not Applicable

FPL-0001
EXP. 01 JUN 2026
Original Issue Date: 2020

INTERNATIONAL LIVING FUTURE INSTITUTE™ living-futures.org/declare

4' DIRECT/INDIRECT PERFORMANCE CHART



Dust Cover
Regress Lens



Batwing Optic
Regress Lens

Direct Distribution	Indirect Distribution	Distribution % (Direct/Indirect)	Total Delivered Lumens	Tested System Watts	LPW	Total Delivered Lumens	Tested System Watts	LPW
200DN	125UP	62/38	2800	23.1	121	1300	15.2	86
	250UP	44/56	3300	26.3	125	1800	17.4	103
	375UP	35/65	4000	30.9	130	2300	20.2	114
	500UP	29/71	1700	18.7	91	2800	23.4	120
	625UP	24/76	2200	20.8	106	3300	26.6	124
	800UP	20/80	2700	23.6	115	4000	31.3	128
300DN	125UP	71/29	3200	26.6	120	1700	18.7	91
	250UP	55/45	3700	29.8	124	2200	20.9	105
	375UP	44/56	4400	34.4	128	2700	23.7	114
	500UP	38/62	2100	22.7	92	3200	26.9	119
	625UP	32/68	2600	24.9	105	3700	30.1	123
	800UP	27/73	3100	27.6	112	4400	34.8	126
400DN	125UP	76/24	3600	30.7	117	2100	22.7	92
	250UP	62/38	4100	33.9	121	2600	25.0	104
	375UP	52/48	4800	38.4	125	3100	27.8	112
	500UP	44/56	2500	27.7	90	3600	30.9	116
	625UP	39/61	3000	29.8	101	4100	34.2	120
	800UP	33/67	3500	32.6	107	4800	38.9	124
500DN	125UP	80/20	4000	35.6	112	2500	27.7	90
	250UP	67/33	4500	38.8	116	3000	29.9	100
	375UP	57/43	5200	43.4	120	3500	32.7	107
	500UP	50/50	2900	32.2	90	4000	35.9	112
	625UP	44/56	3400	34.3	99	4500	39.1	115
	800UP	38/62	3900	37.1	105	5200	43.8	119
600DN	125UP	80/20	4400	40.2	110	2900	32.2	90
	250UP	67/33	4900	43.3	113	3400	34.4	99
	375UP	57/43	5600	47.9	117	3900	37.3	105
	500UP	50/50	3300	36.8	90	4400	40.4	109
	625UP	44/56	3800	39.0	97	4900	43.7	112
	800UP	38/62	4300	41.8	103	5600	48.3	116
700DN	125UP	80/20	4800	44.8	107	3300	36.8	90
	250UP	67/33	5300	48.0	110	3800	39.1	97
	375UP	57/43	6000	52.6	114	4300	41.9	103
	500UP	50/50	4800	45.1	107	4800	45.1	107
	625UP	44/56	5300	48.3	110	5300	48.3	110
	800UP	38/62	6000	53.0	113	6000	53.0	113

*Based on 3500k, 80CRI, 4' lengths. Lumen multipliers: Dust Cover Top = 1.23, 90 CRI = 0.87. Lumen output may vary +/- 5%. Actual wattage may vary +/- 5%.