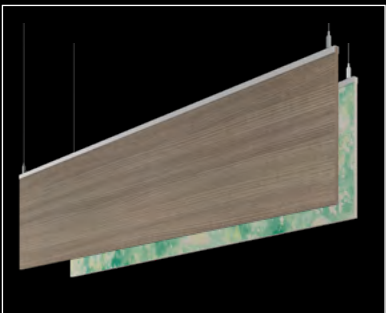
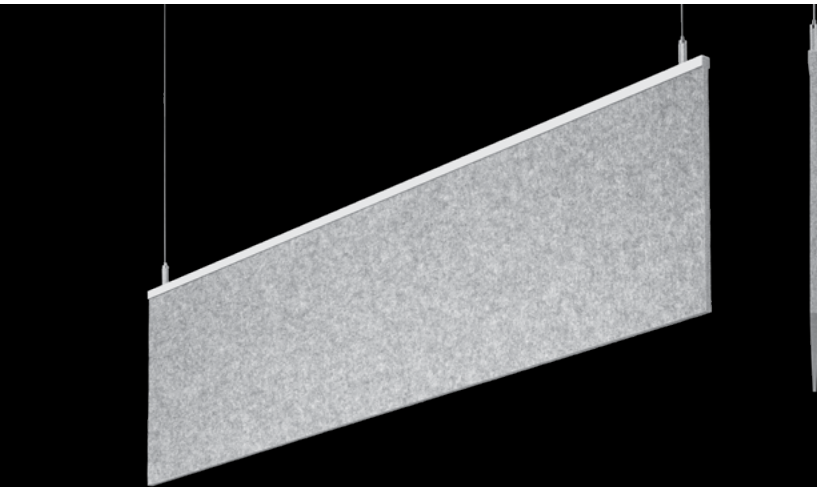
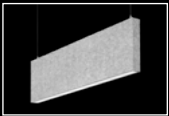


# TruBlade®

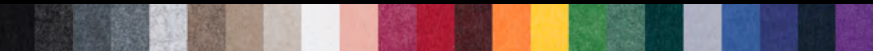
UNLIT ACOUSTIC



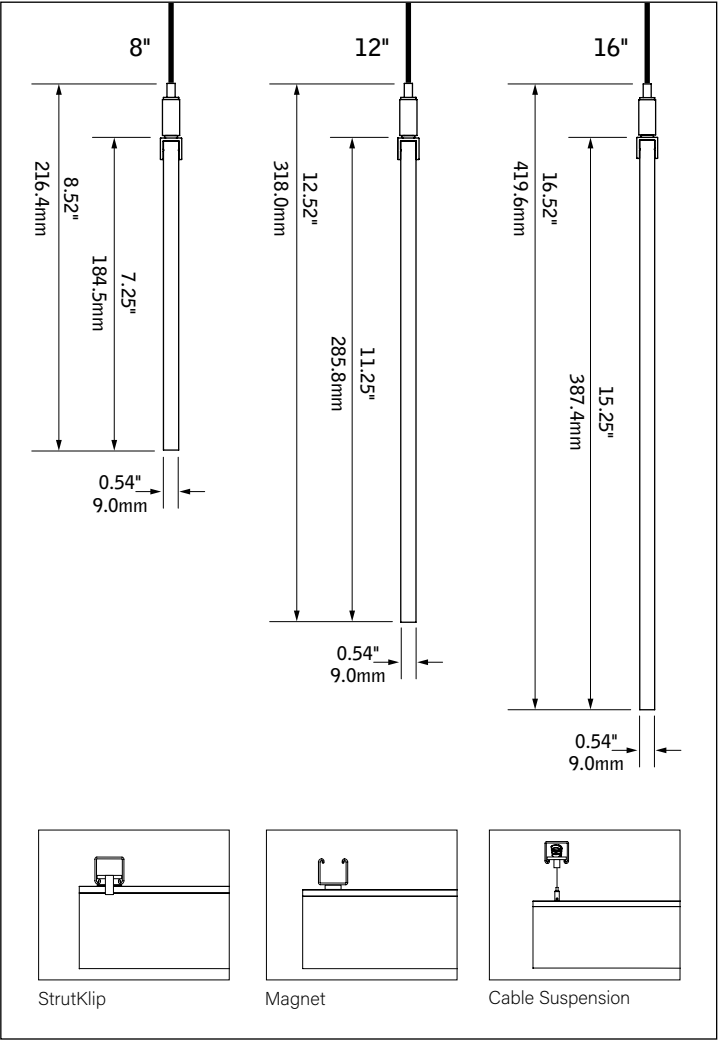
The Naturals collection - Gray Elm shown  
Cosmic collection - Green Quasae shown



Seem 1 Acoustic  
luminaires



## DIMENSIONAL DATA



## FEATURES

Slim, 9mm thick, sound absorbing unlit acoustic blade.

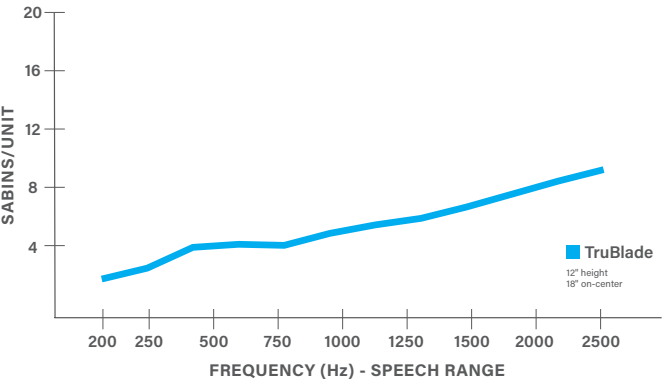
Available in 2' to 8' lengths in 1" increments with 8", 12" or 16" nominal housing heights.

Wide range of color options provides design flexibility and personalization for any project.

Pair with Seem 1 Acoustic luminaires to create a coordinated look within interior spaces.

Available in a range of curated printed finish options, including The Naturals and Cosmic.

## ACOUSTIC PERFORMANCE

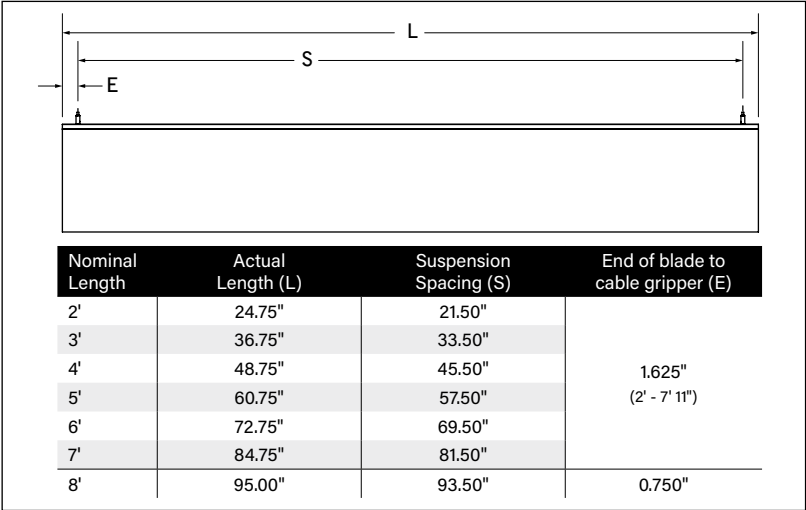


All products were tested in multiple configured arrays. Total absorption will vary based on configuration. Please refer to ASTM C423 reports for more information.

fixture:

project:

MOUNTING DETAILS



SPECIFICATIONS

Acoustic Material

Content	Housing material is 100% polyester containing up to 50% of recycled plastic bottles (PET felt) and is moisture resistant.  See page 3 for color offering. Acoustic material colors are subject to change without notice. For the most current color options, please visit focalpointlights.com/acousticsolutions. Lead times may vary depending on color.
Cleaning and Care	Remove dust and debris with a clean, soft, lint-free cloth or vacuum
PET Thickness	9mm
Surface Burning Characteristics	ASTM E84 Class A / CAN ULC S102 Flame Spread: 0 Smoke Development Index: 300
Colorfastness	AATCC 16A Option 3 Class 4 minimum at 40 hours

Acoustic Performance

Acoustic testing is performed on all Focal Point acoustic products and varies based on installation and configuration. ASTM C423 test reports can be downloaded from focalpointlights.com. Contact acoustic.solutions@focalpointlights.com for technical questions.

Sabins	Sabins is a unit of sound absorption. It measures how well one square foot of material absorbs sound. Focal Point has averaged the Sabins per unit at four specific frequency bands representing the human speech range (250, 500, 1000, 2000 Hz) to determine the Sabins per product.  8' length, 12" height: 12" OC = 5.08 Sabins 18" OC = 5.36 Sabins 24" OC = 5.71 Sabins
NRC	Noise Reduction Coefficient (NRC) is the average of how absorptive a material is at various frequencies within the human speech frequency range. Two materials with the same rating may not perform the same in application. Typically, an NRC of 0 indicates perfect reflection, and an NRC of 1 is designated as perfect absorption. However, based on the testing methodology and depending upon the material's shape or surface area products can test at an NRC greater than 1.  NRC = 0.70

Weight

12" height, 4' length = 1.93lbs. 12" height, 6' length = 2.87lbs. 12" height, 8' length = 3.75lbs.

Rail

Extruded aluminum with anodized finish.

Canopy (optional)

Polyester powder coat applied over a multi-stage pre-treatment. Canopy white as standard.

Reliability

At Focal Point, our products are designed to stand the test of time. Each product is engineered using superior components, manufactured with the utmost care and rigorously tested.

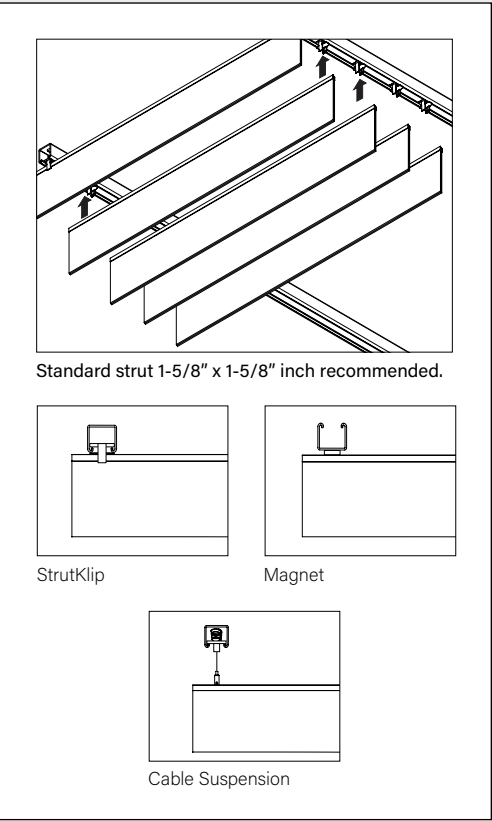
Warranty

1-year limited warranty.

ORDERING

Series	AUTBS
TruBlade	AUTBS
Blade Height	
(Heights are nominal. Custom heights available, consult factory)	
8"	8"
12"	12"
16"	16"
Mounting	
(Mounting hardware ships with order)	
Direct to Strut: StrutKlip	DTSK
Direct to Strut: Magnet	DTSM
24" Cable Suspension	J24__
48" Cable Suspension	J48__
96" Cable Suspension	J96__
120" Cable Suspension	J120__
(Cable Suspension only: specify canopy color White (WH), Black (BK) or Titanium Silver (TS). Example: J24WH.) (Consult factory for sloped ceiling applications)	
Acoustic Panel Color	
See page 3 for color offering	
Rail Finish	AL
Anodized Aluminum	AL
Blade Length	
(Baffles are nominal in length. Baffles cannot be cut to length or joined together in field.)	
Specify length in 1" increments	_ft _in
from 2' to 8'	

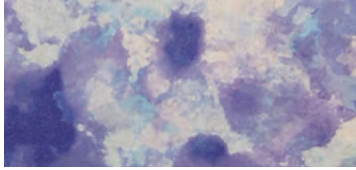
Mounting Options



# Acoustic Materials



## COSMIC (25% SCALE)



BLUE STAR

BSR



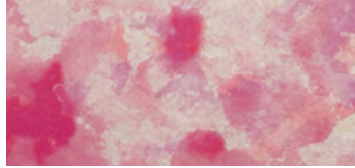
GREEN QUASAR

GQR



MOON ROCK

MRK



PINK NEBULA

PPN



SOLAR FLARE

SRF

## THE NATURALS (25% SCALE)



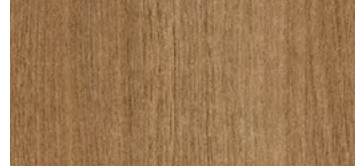
LIGHT OAK

LOK



GRAY ELM

GRE



CHESTNUT

CHT



WALNUT

WLT

## STANDARD PET



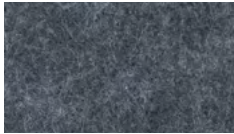
PURE BLACK

PBK



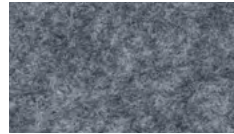
CHARCOAL GRAY

CHG



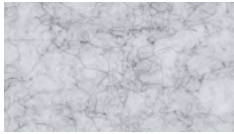
SLATE

SLT



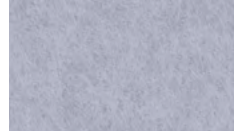
SHADOW GRAY

SDG



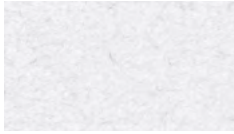
SILVER GRAY

SLG



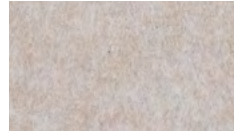
PEARL ICE

PIC



CLASSIC WHITE

CWH



NATURAL LINEN

NTL



HAZELWOOD

HZW

## PREMIUM PET



CORNFLOWER BLUE

CFB



DENIM BLUE

DNB



MIDNIGHT BLUE

MNB



DEEP PURPLE

DPP



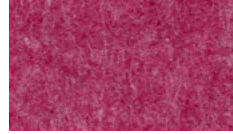
BRICK RED

BRD



CHERRY RED

CHR



BERRY

BRY



BLUSH

BLS



CARROT

CRT



PINEAPPLE

PNA



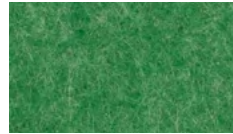
DEEP WATER

DWT



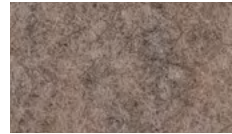
SEAFOAM

SFM



EMERALD GREEN

EMG



LIMESTONE

LMS

Slight color variations are inherent to the PET felt manufacturing process. Color renditions on screens vary due to display settings and lighting conditions.

Order samples at [focalpointlights.com/Samples](https://focalpointlights.com/Samples)

