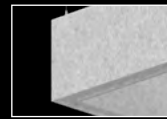
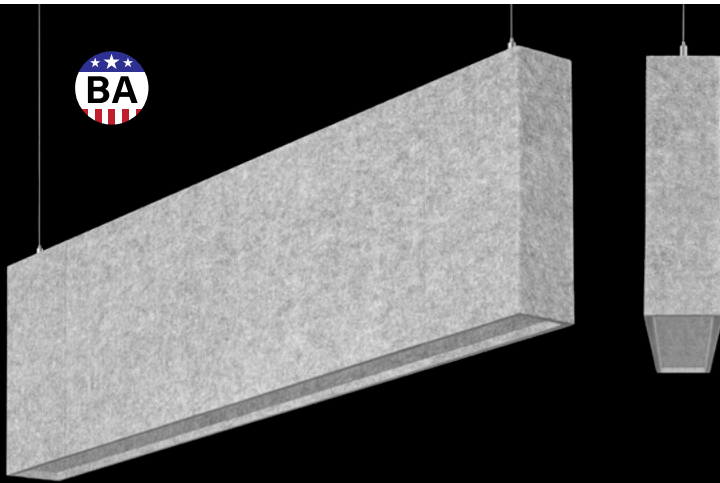


Seem® 2 Acoustic

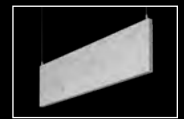
UNLIT



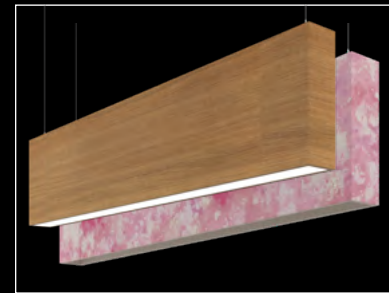
90° corner detail



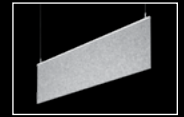
'L' pattern



AirCore Blade companion

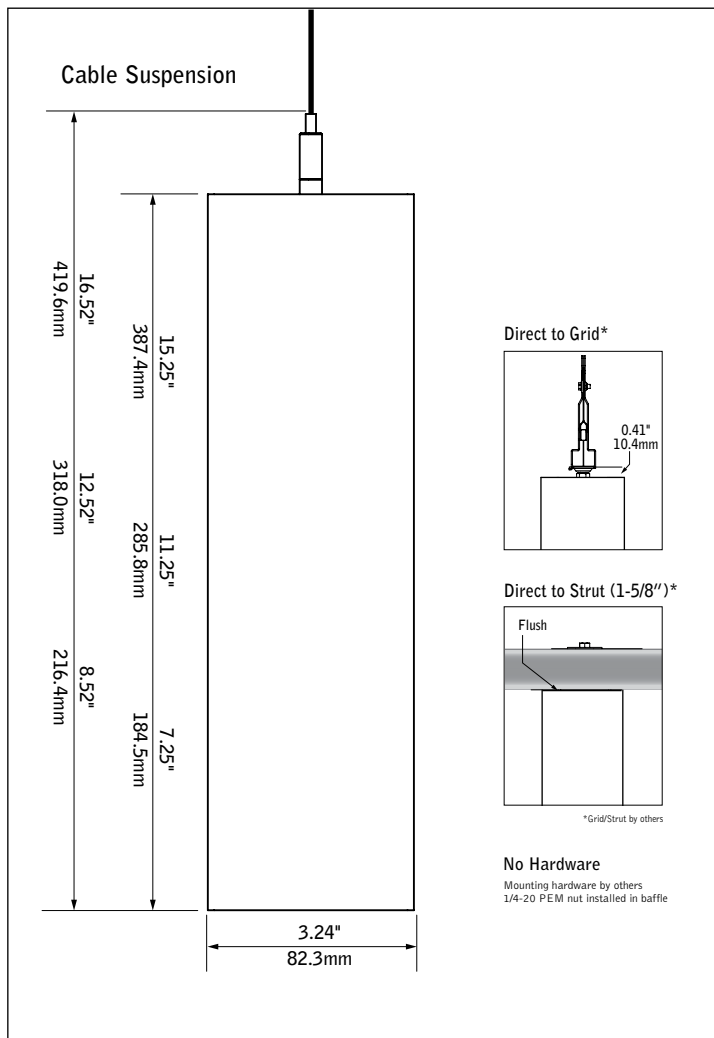


The Naturals collection - Chestnut direct shown
Cosmic Collection - Pink Nebula shown



TruBlade companion

DIMENSIONAL DATA



FEATURES

Sound absorbing unlit acoustic baffle.

Available in 2' to 208' lengths in 1" increments with 8", 12", or 16" nominal housing heights in straight lengths or patterns with 90° corners.

AirCore® Technology: patented, eco-friendly technology that maximizes sound absorption and reduces ecological impact.

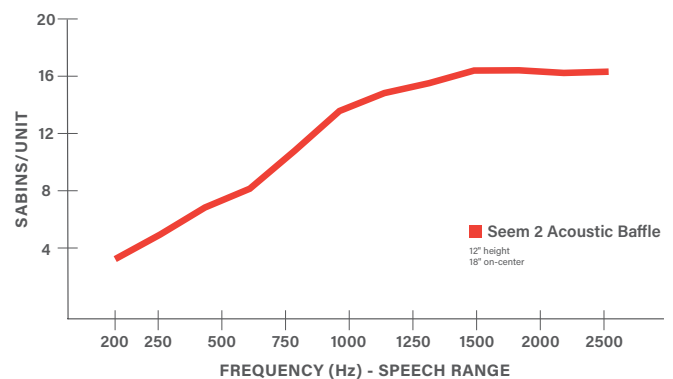
Eco-friendly acoustic material available in a variety of colors.

Wide range of color options provides design flexibility and personalization for any project.

Pair with Seem 2 Acoustic luminaires or Seem 2 Acoustic Trio to create a coordinated look in interior spaces.

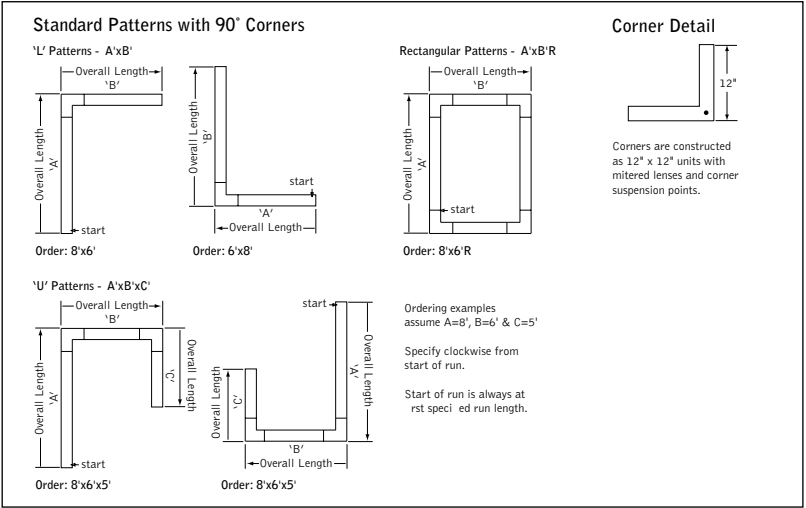
Available in a range of curated printed finish options, including The Naturals and Cosmic.

ACOUSTIC PERFORMANCE



All products were tested in multiple configured arrays. Total absorption will vary based on configuration. Please refer to ASTM C423 reports for more information.

PATTERN DETAILS



SPECIFICATIONS
Acoustic Material

Content	Housing material is 100% polyester containing up to 50% of recycled plastic bottles (PET felt) and is moisture resistant. See page 3 for color offering. Acoustic material colors are subject to change without notice. For the most current color options, please visit focalpointlights.com/acousticsolutions . Lead times may vary depending on color.
Cleaning and Care	Remove dust and debris with a clean, soft, lint-free cloth or vacuum
PET Thickness	9mm
Surface Burning Characteristics	ASTM E84 Class A / CAN ULC S102 Flame Spread: 0 Smoke Development Index: 300
Colorfastness	AATCC 16A Option 3 Class 4 minimum at 40 hours

Acoustic Performance

Acoustic testing is performed on all Focal Point acoustic products and varies based on installation and configuration. ASTM C423 test reports can be downloaded from focalpointlights.com.
Contact acoustic.solutions@focalpointlights.com for technical questions.

Sabins	Sabins is a unit of sound absorption. It measures how well one square foot of material absorbs sound. Focal Point has averaged the Sabins per unit at four specific frequency bands representing the human speech range (250, 500, 1000, 2000 Hz) to determine the Sabins per product. 8' length, 12" height: 12" OC = 10.26 Sabins 18" OC = 11.67 Sabins 24" OC = 12.43 Sabins
--------	---

Labels

Suitable for Dry Locations, indoor use only.

Weight

12" height, 4' length = 14.1lbs

Canopy (suspended mounting only)

Polyester powder coat applied over a multi-stage pre-treatment. Canopy white as standard.

Reliability

At Focal Point, our products are designed to stand the test of time. Each product is engineered using superior components, manufactured with the utmost care and rigorously tested.

Warranty

1-year limited warranty.

ORDERING

Baffle Series	AUSM2S
Seem 2 Acoustic Unlit	AUSM2S
Shielding	SD
Solid Bottom	SD
Baffle Height (heights are nominal)	
8"	8
12"	12
16"	16

Mounting

Suspended

(Mounting hang kits ship with order)

24" Cable Suspension	J24
48" Cable Suspension	J48
96" Cable Suspension	J96
120" Cable Suspension	J120

(Specify canopy color White (WH), Black (BK) or Titanium Silver (TS). Example: J24WH)
(Consult factory for sloped ceiling applications)

Surface Mounted

Direct/Flush to Grid	DTG
Direct/Flush to Strut	DTS

Hardware by others

(Mounting hardware provided by others)

No Hardware	NH
-------------	----

Acoustic Panel Color

See page 3 for color offering

Baffle Length

(Leave blank for patterns. Baffles are 3/4" longer than specified and cannot be cut to length or joined in the field.)

Specify length in 1" increments
from 2' to 208'

(16' maximum for DTG, consult factory for alternate lengths.)

Pattern Options

(5' minimum leg length for L patterns.
6' minimum leg length for U and Rectangle patterns)

'L' pattern A' x B'

'U' pattern A' x B' x C'

Rectangular pattern A' x B' R

(Consult factory for other pattern options)

Acoustic Materials



COSMIC (25% SCALE)



BLUE STAR

BSR



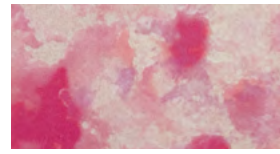
GREEN QUASAR

GQR



MOON ROCK

MRK



PINK NEBULA

PPN



SOLAR FLARE

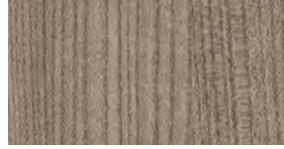
SRF

THE NATURALS (25% SCALE)



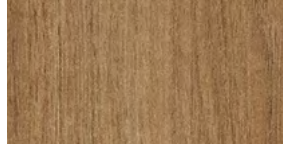
LIGHT OAK

LOK



GRAY ELM

GRE



CHESTNUT

CHT



WALNUT

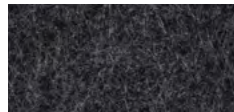
WLT

STANDARD PET



PURE BLACK

PBK



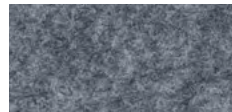
CHARCOAL GRAY

CHG



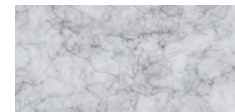
SLATE

SLT



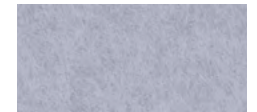
SHADOW GRAY

SDG



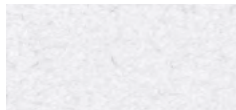
SILVER GRAY

SLG



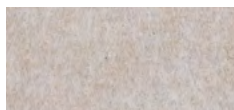
PEARL ICE

PIC



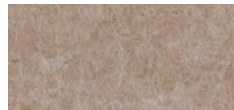
CLASSIC WHITE

CWH



NATURAL LINEN

NTL



HAZELWOOD

HZW

PREMIUM PET



CORNFLOWER BLUE

CFB



DENIM BLUE

DNB



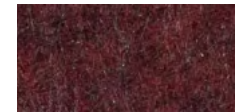
MIDNIGHT BLUE

MNB



DEEP PURPLE

DPP



BRICK RED

BRD



CHERRY RED

CHR



BERRY

BRY



BLUSH

BLS



CARROT

CRT



PINEAPPLE

PNA



DEEP WATER

DWT



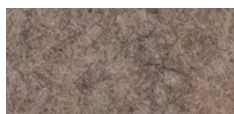
SEAFOAM

SFM



EMERALD GREEN

EMG



LIMESTONE

LMS

Declare.

PET
Focal Point, LLC

Final Assembly: Chicago, Illinois, USA
Life Expectancy: 30 Year(s)
End of Life Options: Salvageable/Reusable in its Entirety, Recyclable (100%)

Ingredients:

Polyethylene terephthalate; PET; N, N'-Ethylene bisstearamide; Octadecanamide; N,N'-1,2-ethanedithiolbis-Stearic Acid; Stearic Acid; Antioxidant 1076; Benzenesulfonyl acid, 3,5-bis(1,1-dimethylethyl)-4-hydroxy-octadecyl ester; Antioxidant KY-405; Benzenamine, 4-(1-methyl-1-phenylethyl)-N-[4-(1-methyl-1-phenylethyl)phenyl]; Titanium Dioxide; Titanium dioxide

Living Building Challenge Criteria:

I-13 Red List:

■ LBC Red List Free % Disclosed: 100% at 100ppm
□ LBC Red List Approved VOC Content: Not Applicable
■ Declared

I-10 Interior Performance: Not Compliant
I-14 Responsible Sourcing: Not Applicable

FPL-0001
EXP: 01 JUN 2026
Original Issue Date: 2020

INTERNATIONAL LIVING FUTURE INSTITUTE™ living-future.org/declare

Declare.

Seem® 2 Acoustic
Focal Point, LLC

Final Assembly: Chicago, Illinois, USA
Life Expectancy: 10 Year(s)
End of Life Options: Recyclable (55%), Landfill (45%)

Ingredients:

Polyethylene Terephthalate; Steel; UNS G1008; Copper; Polymethyl methacrylate; Small Electrical Components - RoHS Compliant; Poly(Imino(1,6-dioxo-1,6-hexanediyl)imino-1,6-hexanediyl); Polyvinyl chloride; Steel, carbon; Zinc; Aluminum; Steel manufacture, chemicals; Methyl methacrylate; Polyethylene

†LBC Temp Exception RL-002 - Small Electrical Components

Living Building Challenge Criteria:

I-13 Red List:

□ LBC Red List Free % Disclosed: 100% at 100ppm
□ LBC Red List Approved VOC Content: Not Applicable
■ Declared

I-10 Interior Performance: Not Applicable
I-14 Responsible Sourcing: Not Applicable

FPL-0005
EXP: 01 JAN 2026
Original Issue Date: 2024

INTERNATIONAL LIVING FUTURE INSTITUTE™ living-future.org/declare

Slight color variations are inherent to the PET felt manufacturing process. Color renditions on screens vary due to display settings and lighting conditions.

Order samples at focalpointlights.com/Samples

MOUNTING DETAILS

