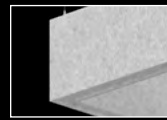
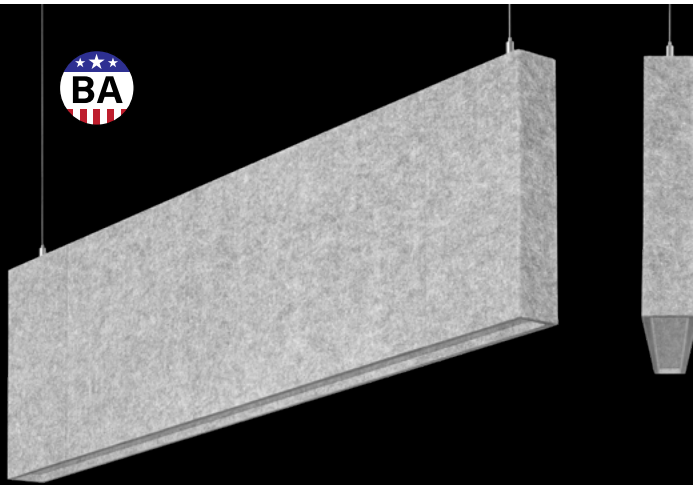


# Seem® 1 Acoustic

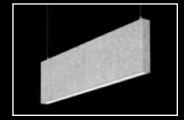
UNLIT



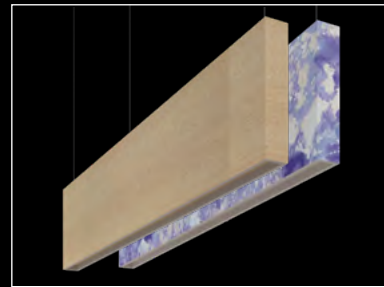
90° corner detail



'L' pattern



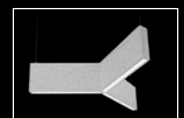
Seem 1 Acoustic Luminaire



The Naturals collection - Light Oak shown  
Cosmic Collection - Blue Sky shown

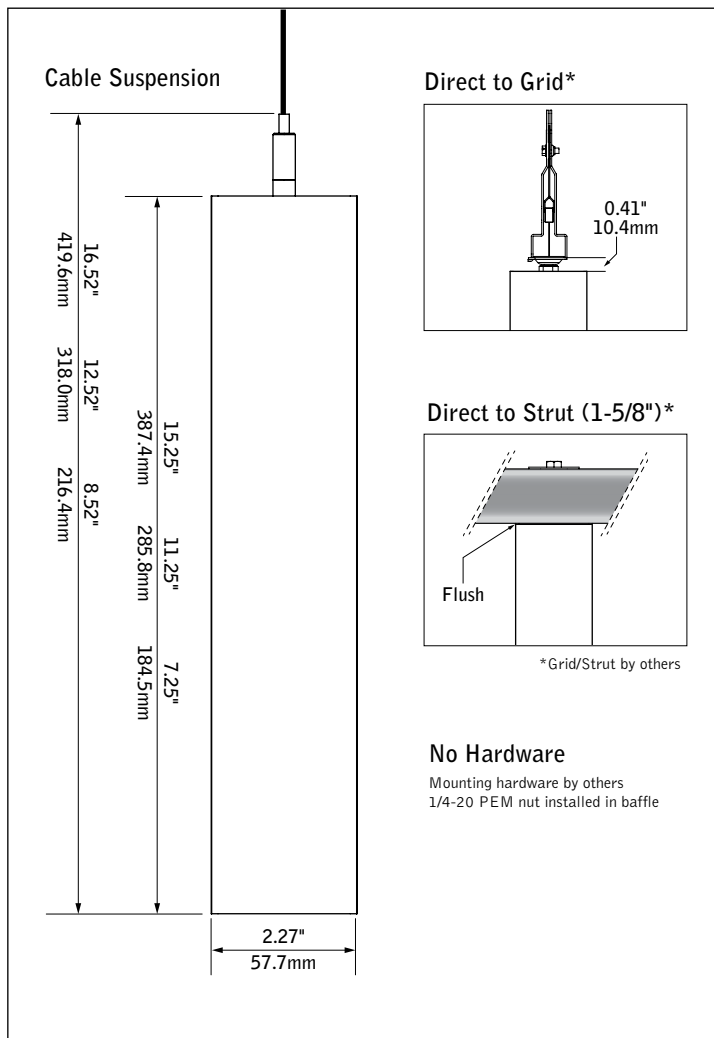


AirCore Blade companion



Seem 1 Acoustic Trio companion

## DIMENSIONAL DATA



## FEATURES

Narrow, sound absorbing unlit acoustic baffle.

Available in 2' to 208' lengths in 1" increments with 8", 12" or 16" nominal housing heights in straight lengths or patterns with 90° corners.

AirCore® Technology: patented, eco-friendly technology that maximizes sound absorption and reduces ecological impact.

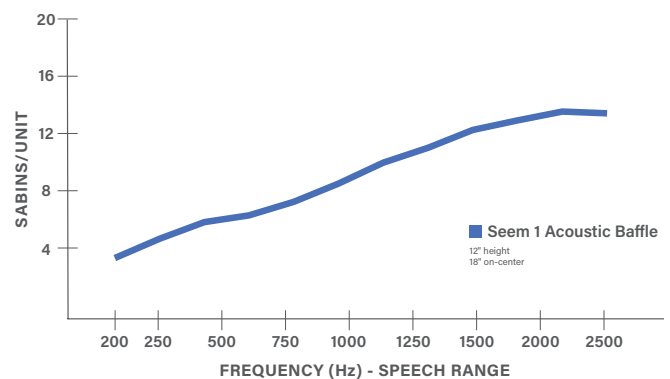
Eco-friendly acoustic material available in a variety of colors.

Wide range of color options provides design flexibility and personalization for any project.

Pair with Seem 1 Acoustic luminaires or Seem 1 Acoustic Trio to create a coordinated look in interior spaces.

Available in a range of curated printed finish options, including The Naturals and Cosmic.

## ACOUSTIC PERFORMANCE



All products were tested in multiple configured arrays. Total absorption will vary based on configuration. Please refer to ASTM C423 reports for more information.

PATTERN DETAILS

Standard Patterns with 90° Corners

**'L' Patterns - A'xB'**

Order: 8'x6'

Order: 6'x8'

**'U' Patterns - A'xB'xC'**

Order: 8'x6'x5'

Order: 8'x6'x5'

**Rectangular Patterns - A'xB'R**

Order: 8'x6'R

**Corner Detail**

Corners are constructed as 12" x 12" units with mitered lenses and corner suspension points.

Ordering examples assume A=8', B=6' & C=5'

Specify clockwise from start of run.

Start of run is always at first specified run length.

SPECIFICATIONS  
Acoustic Material

Content	Housing material is 100% polyester containing up to 50% of recycled plastic bottles (PET felt) and is moisture resistant.  See page 3 for color offering. Acoustic material colors are subject to change without notice. For the most current color options, please visit <a href="https://focalpointlights.com/acousticsolutions">focalpointlights.com/acousticsolutions</a> . Lead times may vary depending on color.
Cleaning and Care	Remove dust and debris with a clean, soft, lint-free cloth or vacuum
PET Thickness	9mm
Surface Burning Characteristics	ASTM E84 Class A / CAN ULC S102 Flame Spread: 0 Smoke Development Index: 300
Colorfastness	AATCC 16A Option 3 Class 4 minimum at 40 hours

Acoustic Performance

Acoustic testing is performed on all Focal Point acoustic products and varies based on installation and configuration. ASTM C423 test reports can be downloaded from [focalpointlights.com](https://focalpointlights.com).  
Contact [acoustic.solutions@focalpointlights.com](mailto:acoustic.solutions@focalpointlights.com) for technical questions.

Sabins	Sabins is a unit of sound absorption. It measures how well one square foot of material absorbs sound. Focal Point has averaged the Sabins per unit at four specific frequency bands representing the human speech range (250, 500, 1000, 2000 Hz) to determine the Sabins per product.  8' length, 12" height: 12" OC = 5.08 Sabins 18" OC = 9.05 Sabins 24" OC = 9.46 Sabins
--------	--

Labels

Suitable for Dry Locations, indoor use only.

Weight

12" height, 4' length = 9.25lbs. 12" height, 6' length = 13.88lbs. 12" height, 8' length = 18.5lbs.

Canopy (suspended mounting only)

Polyester powder coat applied over a multi-stage pre-treatment. Canopy white as standard.

Reliability

At Focal Point, our products are designed to stand the test of time. Each product is engineered using superior components, manufactured with the utmost care and rigorously tested.

Warranty

1-year limited warranty.

ORDERING

Baffle Series

Seem 1 Acoustic Unit AUSM1S

Shielding

Solid Bottom SD

Baffle Height

(heights are nominal)

8" 8  
12" 12  
16" 16

Mounting

Suspended

(Mounting hang kits ship with order)

24" Cable Suspension J24\_\_

48" Cable Suspension J48\_\_

96" Cable Suspension J96\_\_

120" Cable Suspension J120\_\_

(Specify canopy color White (WH), Black (BK) or Titanium Silver (TS). Example: J24WH.)  
(Consult factory for sloped ceiling applications)

Surface Mounted

Direct/Flush to Grid DTG

Direct/Flush to Strut DTS

Hardware by others

(Mounting hardware provided by others)

No Hardware NH

Acoustic Panel Color

See page 3 for color offering

Baffle Length

(Leave blank for patterns. Baffles are 3/4" longer than specified and cannot be cut to length or joined in the field.)

Specify length in 1" increments from 2' to 208' \_ft \_in  
(16' maximum for DTG, consult factory for alternate lengths.)

Pattern Options

(5' minimum leg length for L patterns.  
6' minimum leg length for U and Rectangle patterns)

'L' pattern A' x B'

'U' pattern A' x B' x C'

Rectangular pattern A' x B' R

(Consult factory for other pattern options)

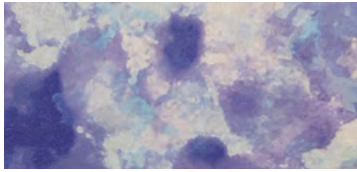


Options in orange qualify for the Quickship program. Five color options. Available in 4', 6', 8', 10', 12', 14', 16', lengths. Maximum linear feet is 200' of acoustic products per order. Refer to Quickship Guide for complete details.

# Acoustic Materials



## COSMIC (25% SCALE)



BLUE STAR

BSR



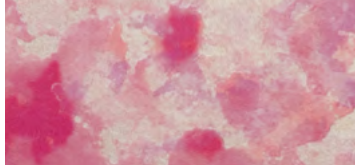
GREEN QUASAR

GQR



MOON ROCK

MRK



PINK NEBULA

PPN



SOLAR FLARE

SRF

## THE NATURALS (25% SCALE)



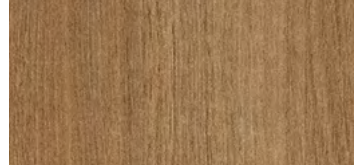
LIGHT OAK

LOK



GRAY ELM

GRE



CHESTNUT

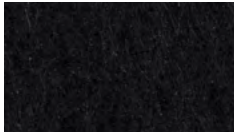
CHT



WALNUT

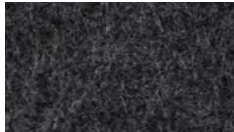
WLT

## STANDARD PET



PURE BLACK

PBK



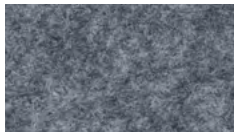
CHARCOAL GRAY

CHG



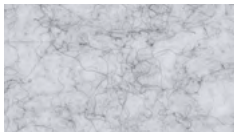
SLATE

SLT



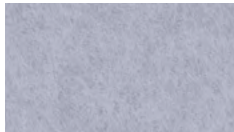
SHADOW GRAY

SDG



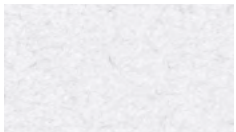
SILVER GRAY

SLG



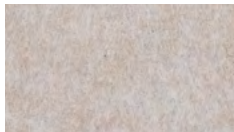
PEARL ICE

PIC



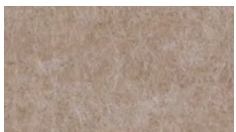
CLASSIC WHITE

CWH



NATURAL LINEN

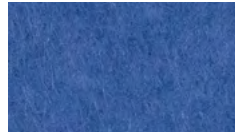
NTL



HAZELWOOD

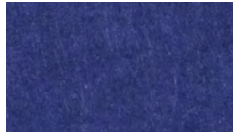
HZW

## PREMIUM PET



CORNFLOWER BLUE

CFB



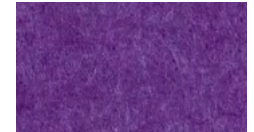
DENIM BLUE

DNB



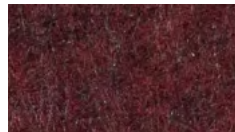
MIDNIGHT BLUE

MNB



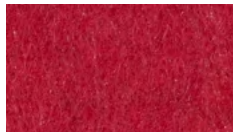
DEEP PURPLE

DPP



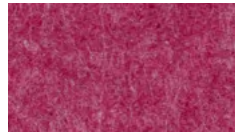
BRICK RED

BRD



CHERRY RED

CHR



BERRY

BRY



BLUSH

BLS



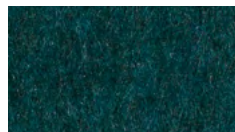
CARROT

CRT



PINEAPPLE

PNA



DEEP WATER

DWT



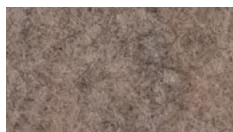
SEAFOAM

SFM



EMERALD GREEN

EMG



LIMESTONE

LMS

Slight color variations are inherent to the PET felt manufacturing process. Color renditions on screens vary due to display settings and lighting conditions.

Order samples at [focalpointlights.com/Samples](https://focalpointlights.com/Samples)

# Declare.

**PET**  
**Focal Point, LLC**

Final Assembly: Chicago, Illinois, USA

Life Expectancy: 30 Year(s)

End of Life Options: Salvageable/Reusable in its Entirety, Recyclable (100%)

### Ingredients:

Polyethylene terephthalate: PET; N, N'-Ethylene bisstearamide: Octadecanamide, N,N'-1,2-ethanediylbis-; Stearic Acid: Stearic Acid; Antioxidant 1076: Benzenepropanoic acid, 3,5-bis(1,1-dimethylethyl)-4-hydroxy-, octadecyl ester; Antioxidant KY-405: Benzenamine, 4-(1-methyl-1-phenylethyl)-N-[4-(1-methyl-1-phenylethyl)phenyl]; Titanium Dioxide: Titanium dioxide

### Living Building Challenge Criteria:

#### I-13 Red List:

■ LBC Red List Free % Disclosed: 100% at 100ppm  
□ LBC Red List Approved VOC Content: Not Applicable  
□ Declared

I-10 Interior Performance: Not Compliant

I-14 Responsible Sourcing: Not Applicable

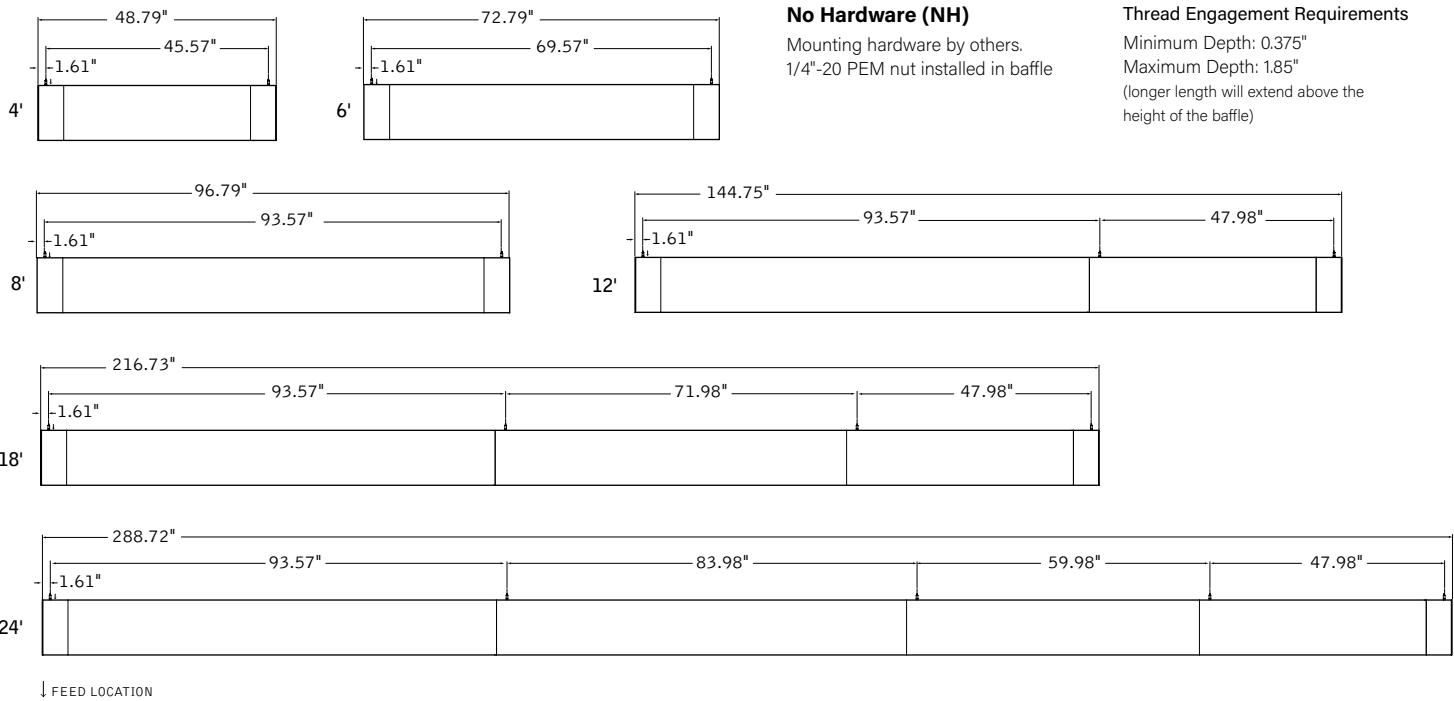
FPL-0001

EXP. 01 JUN 2026

Original Issue Date: 2020

FOCAL POINT LIGHTS IS A MEMBER OF THE INTERNATIONAL LIVING FUTURE INSTITUTE™ [living-future.org/declare/](https://living-future.org/declare/)

MOUNTING DETAILS



RUN CHART

Run length (ft)	Housing Configuration Section Lengths	# of hang points per run	Run length (ft)	Housing Configuration Section Lengths	# of hang points per run
9	5 + 4	3	29	8 + 7 + 7 + 7	5
10	6 + 4	3	30	8 + 7 + 7 + 8	5
11	7 + 4	3	31	8 + 7 + 7 + 5 + 4	6
12	8 + 4	3	32	8 + 7 + 7 + 6 + 4	6
13	8 + 5	3	33	8 + 7 + 7 + 7 + 4	6
14	8 + 6	3	34	8 + 7 + 7 + 7 + 5	6
15	8 + 7	3	35	8 + 7 + 7 + 7 + 6	6
16	8 + 8	3	36	8 + 7 + 7 + 7 + 7	6
17	8 + 5 + 4	4	37	8 + 7 + 7 + 7 + 8	6
18	8 + 6 + 4	4	38	8 + 7 + 7 + 7 + 5 + 4	7
19	8 + 7 + 4	4	39	8 + 7 + 7 + 7 + 6 + 4	7
20	8 + 7 + 5	4	40	8 + 7 + 7 + 7 + 7 + 4	7
21	8 + 7 + 6	4	41	8 + 7 + 7 + 7 + 7 + 5	7
22	8 + 7 + 7	4	42	8 + 7 + 7 + 7 + 7 + 6	7
23	8 + 7 + 8	4	43	8 + 7 + 7 + 7 + 7 + 7	7
24	8 + 7 + 5 + 4	5	44	8 + 7 + 7 + 7 + 7 + 8	7
25	8 + 7 + 6 + 4	5	45	8 + 7 + 7 + 7 + 7 + 5 + 4	8
26	8 + 7 + 7 + 4	5	46	8 + 7 + 7 + 7 + 7 + 6 + 4	8
27	8 + 7 + 7 + 5	5	47	8 + 7 + 7 + 7 + 7 + 7 + 4	8
28	8 + 7 + 7 + 6	5	48	8 + 7 + 7 + 7 + 7 + 7 + 5	8

Standard run configurations, consult factory for custom configurations and longer run lengths.