

# Polina™ Acoustic

TriCore™ Acoustic Construction

UNLIT PENDANT | AUPOLP-SHX-27-SC | AUPOLP-SHX-42-SC



FOCAL POINT®



## BEFORE YOU BEGIN

- Luminaires must be installed by a qualified electrician (check with local and national codes for proper installation).
- To prevent electrical shock, disconnect electrical supply before installation or servicing.
- Contractor is responsible for adequately reinforcing walls and/or ceilings to support fixture weight.
- Focal Point, LLC accepts no responsibility for inadequately reinforced walls and/or ceilings.
- The information contained in this drawing is the sole property of Focal Point, LLC. Any reproduction in part or whole without the written permission of Focal Point, LLC is prohibited.

## INSTRUCTION KEY



ATTENTION



SEE ADDITIONAL INSTRUCTIONS

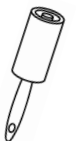
## HANDLING & CLEANING



Always handle with clean white gloves (provided).



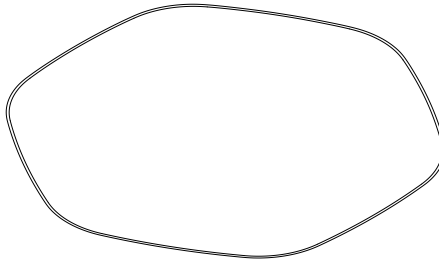
Use can of compressed air to remove dust and debris from shade.



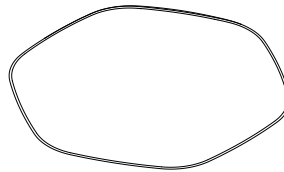
Use lint roller to gently lift any remaining debris from shade.

## COMPONENT KEY

### ACOUSTIC SHADES



42" Shade

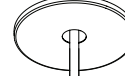


27" Shade

### STEM MOUNT



STEM MOUNTING BRACKET



FACE PLATE

STEM



UNLIT SHADE ALIGNMENT MOUNTING BRACKET

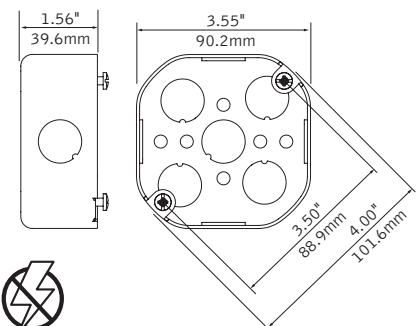
### SHIPPED INSTALLED



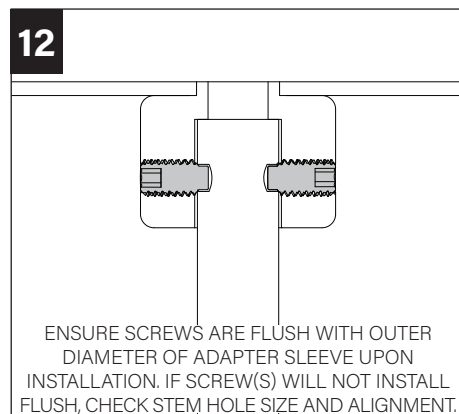
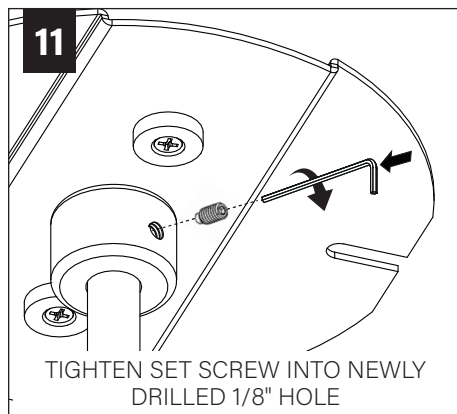
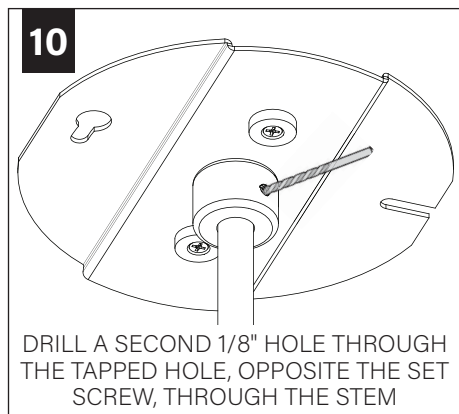
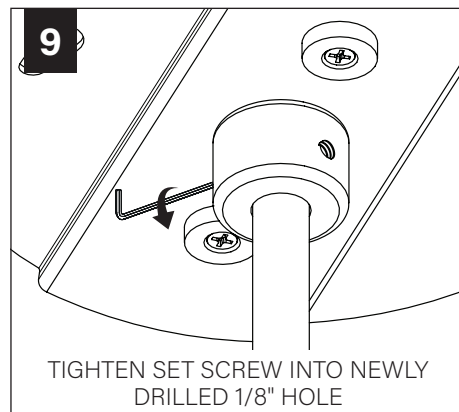
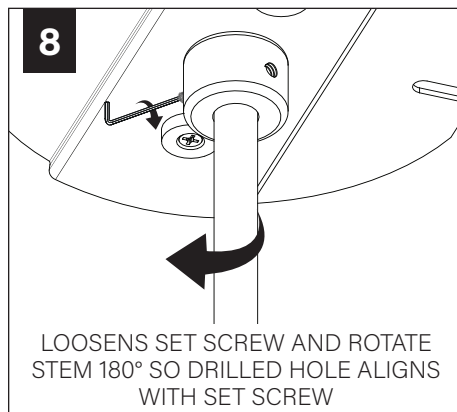
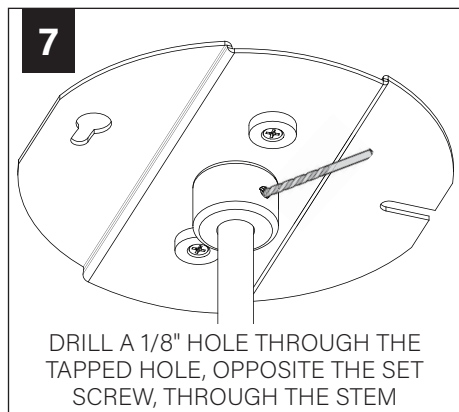
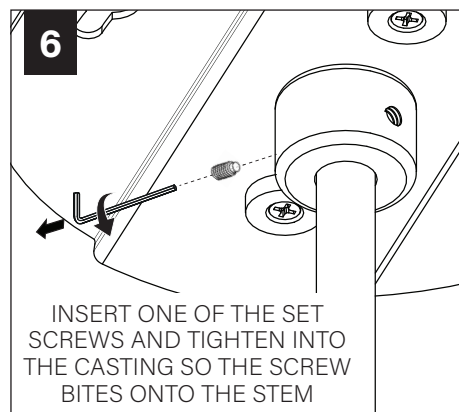
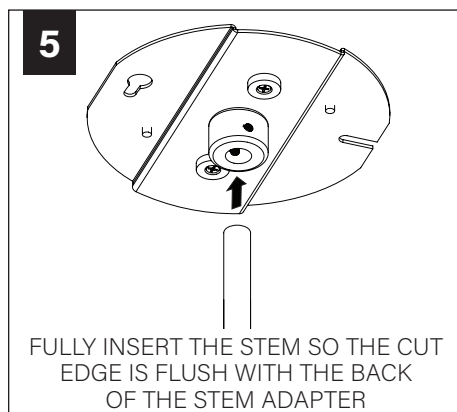
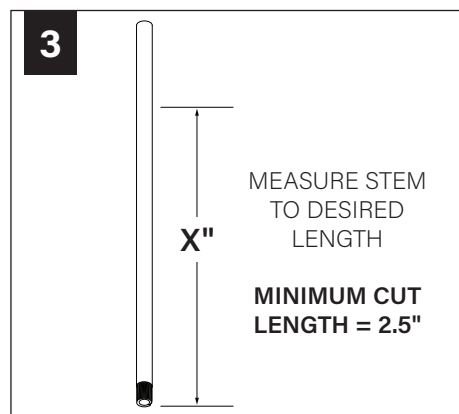
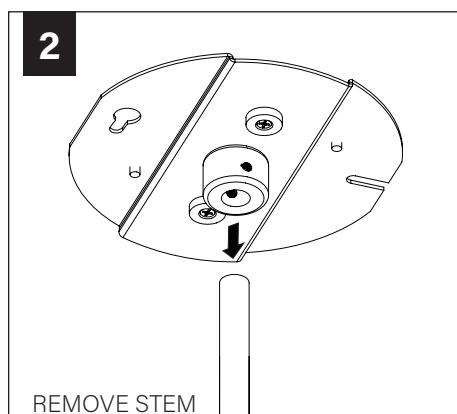
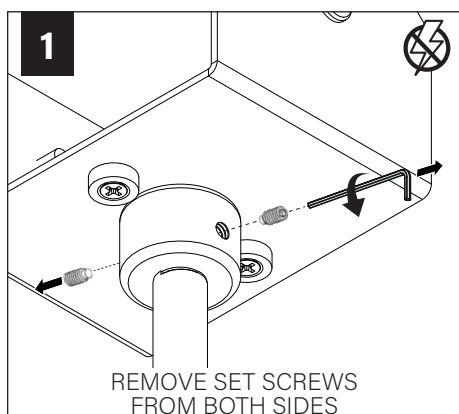
#8-32X5/16" HALF DOG NOSE SET SCREWS

## 4" OCTAGONAL J-BOX REQUIRED

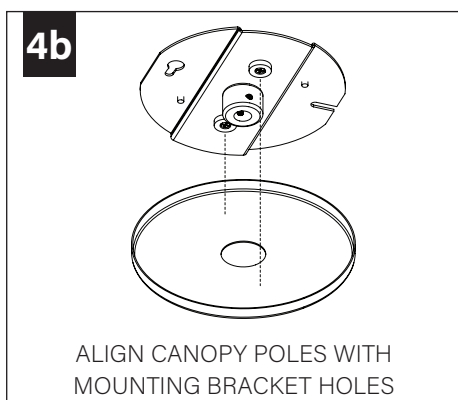
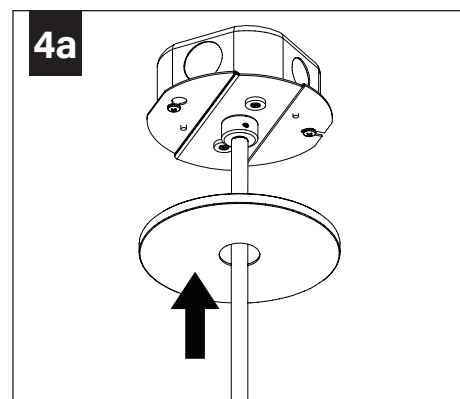
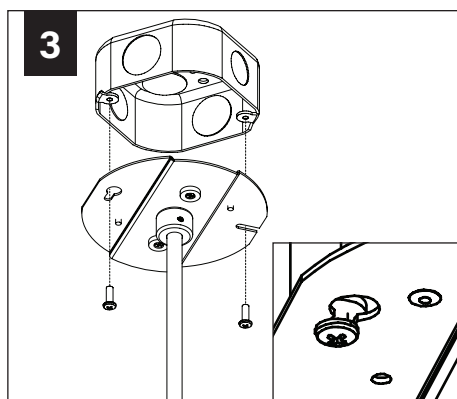
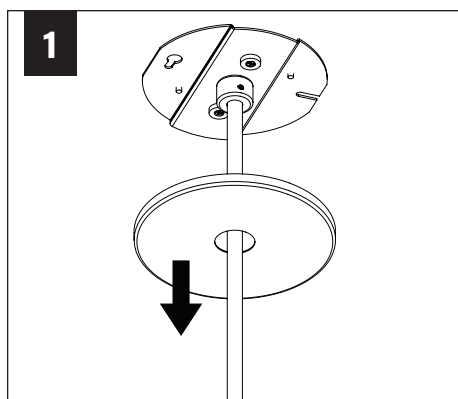
### J-BOX BY OTHERS



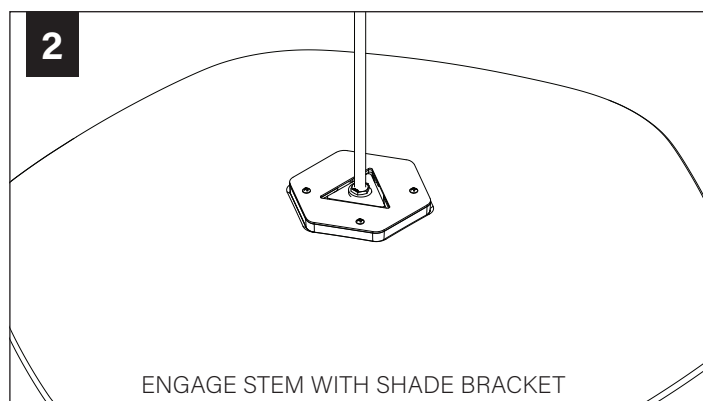
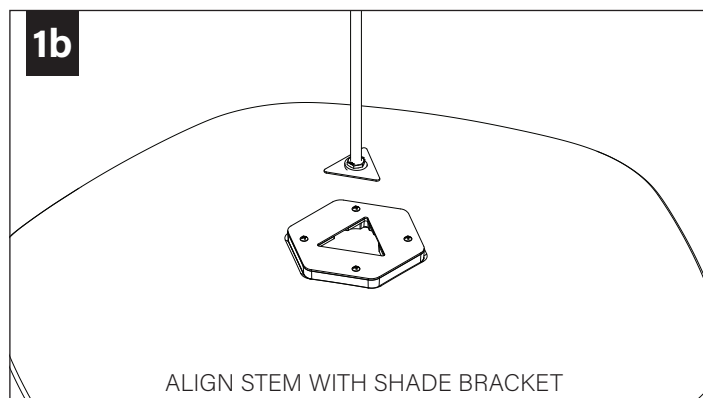
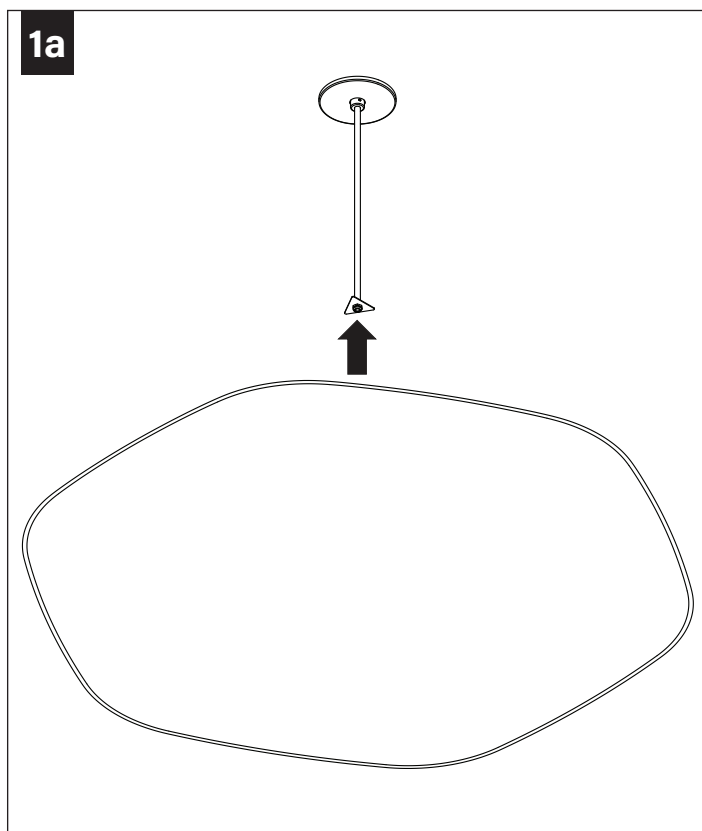
## FIELD CUTTABLE STEM (OPTIONAL)

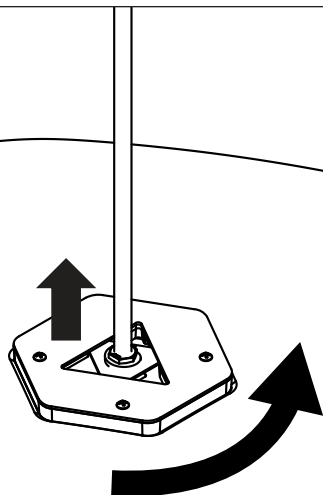


## SHALLOW CANOPY INSTALLATION

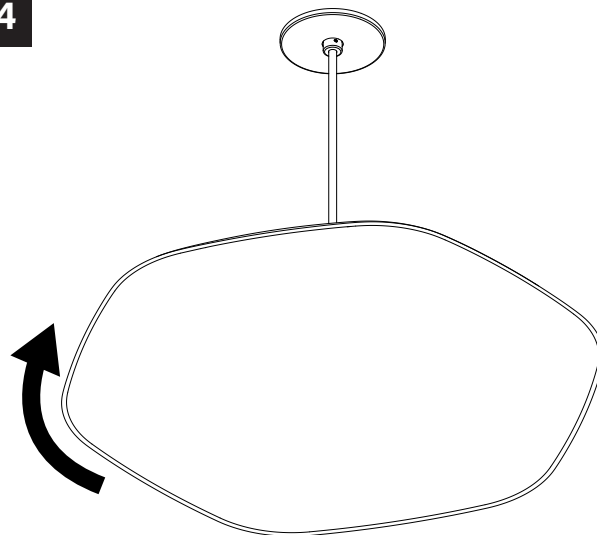


## ACOUSTIC SHADE



**3**

LIFT SHADE SLIGHTLY AND ROTATE 60° CLOCKWISE UNTIL STOPPING POINT. THE SHADE WILL DROP INTO PLACE. ROTATE ANOTHER 20° TO THE RIGHT TO LOCK."

**4**

ONCE SHADE IS LOCKED INTO PLACE, THE SHADE CAN BE ROTATED CLOCKWISE FOR DESIRED ORIENTATION.